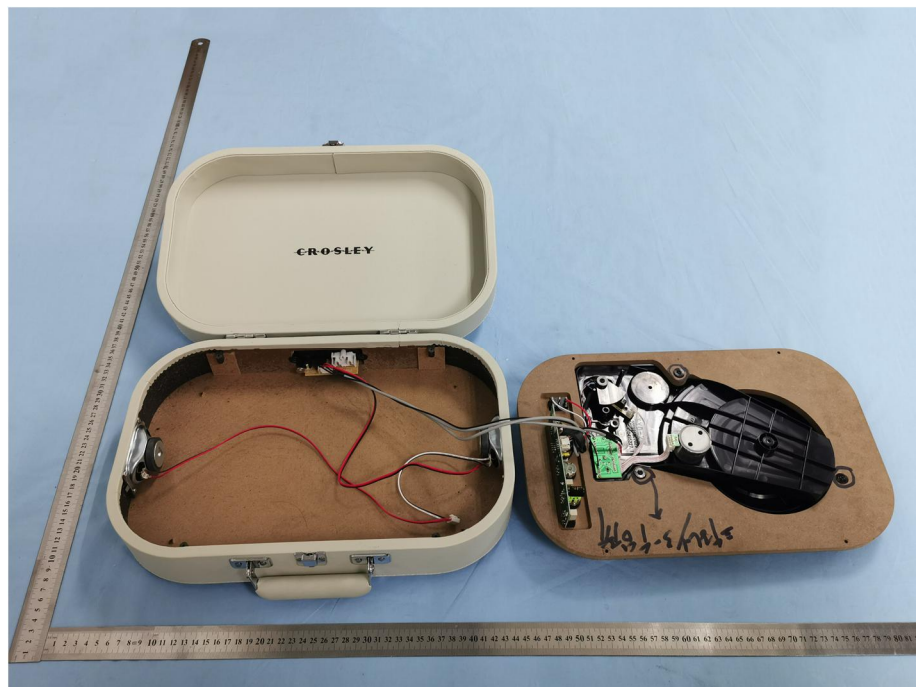


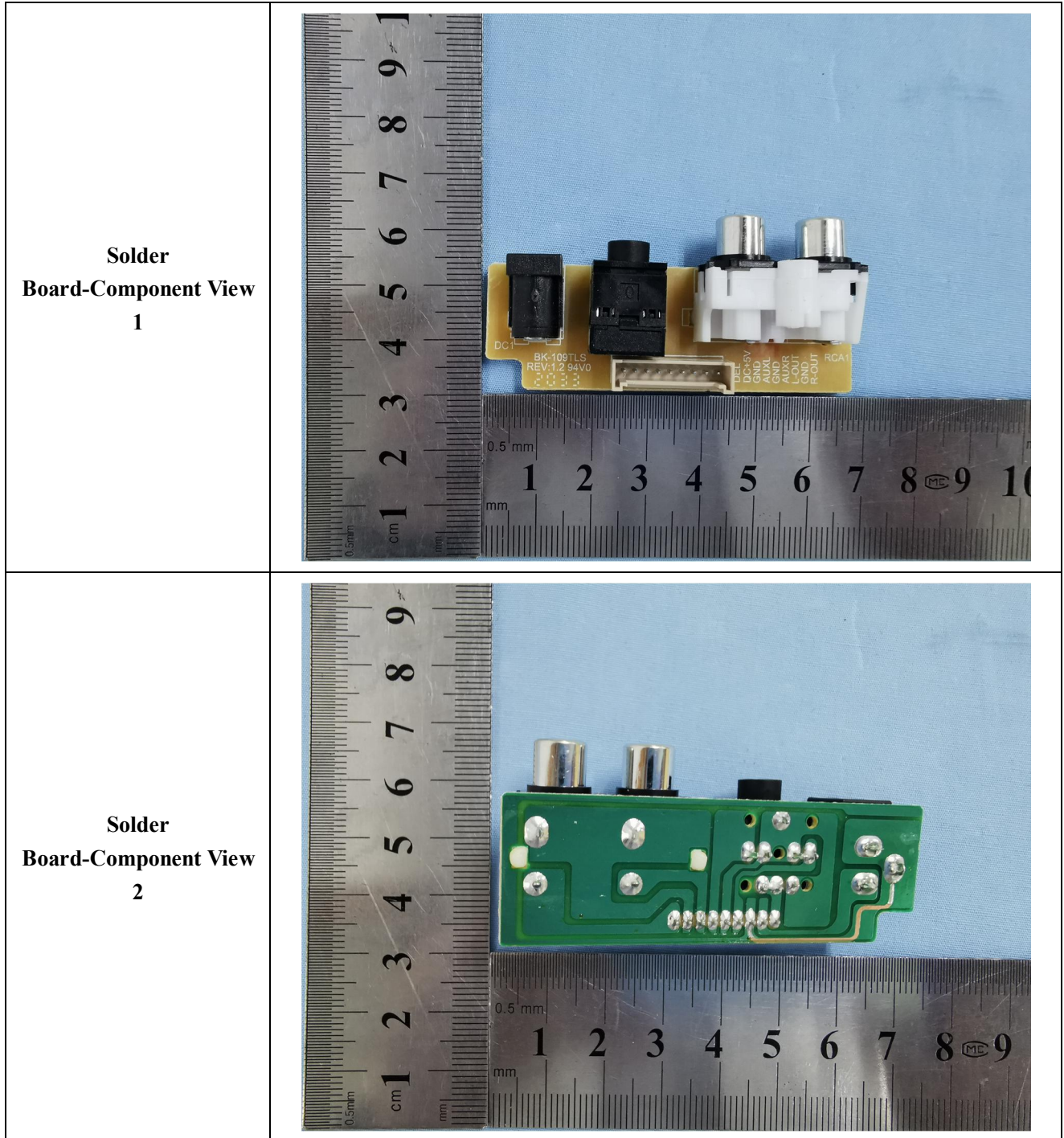
### EXHIBIT 3 - EUT INTERNAL PHOTOGRAPHS

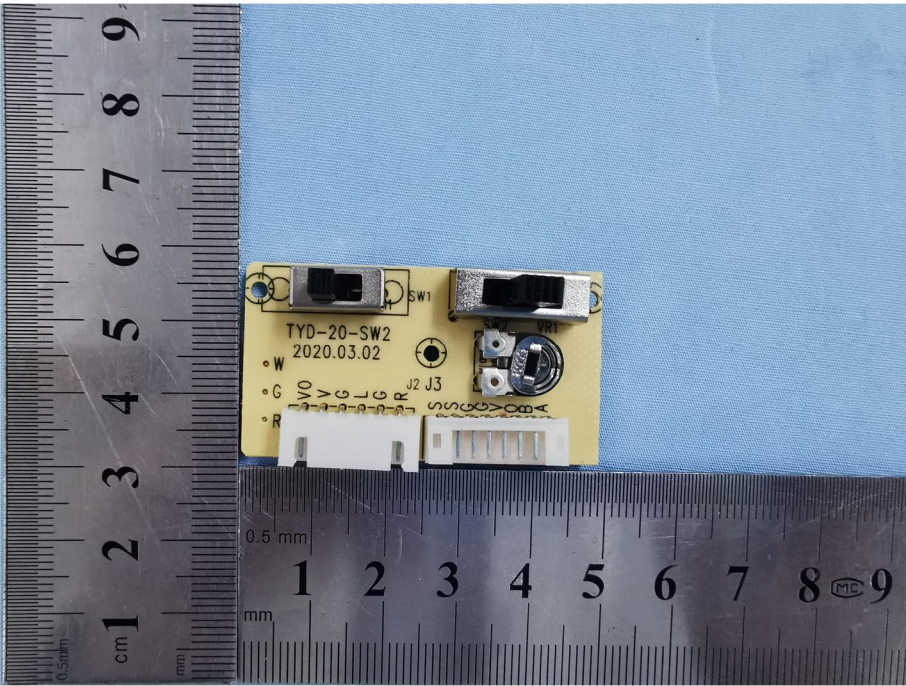
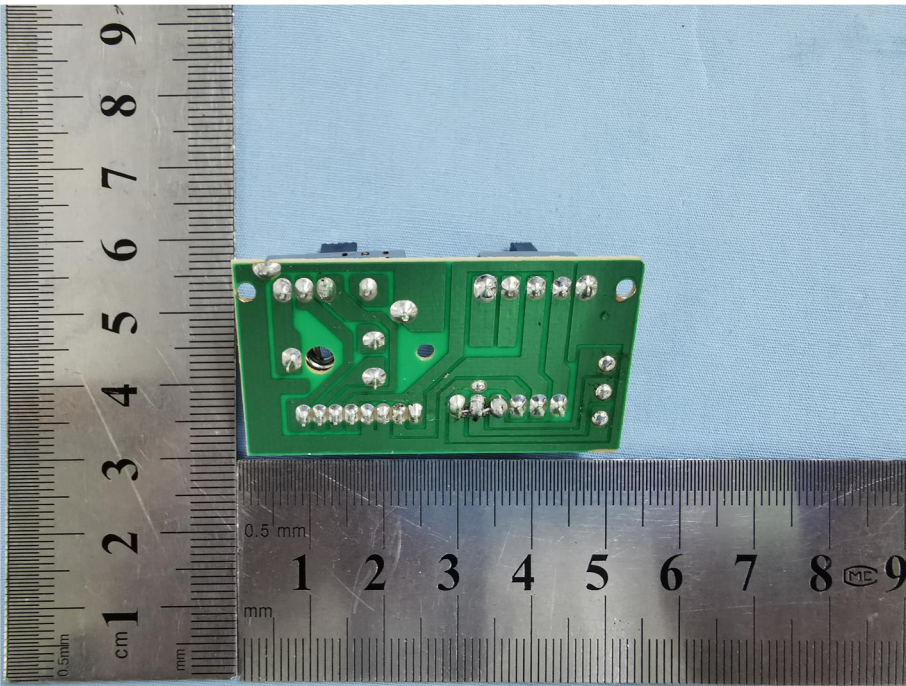
**EUT Housing and Board  
View 1**

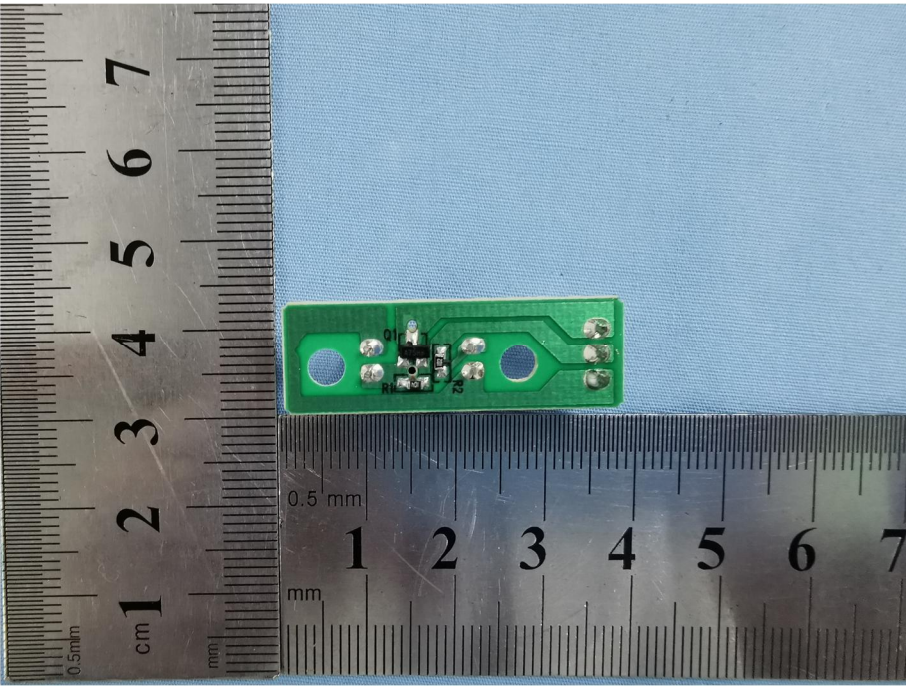
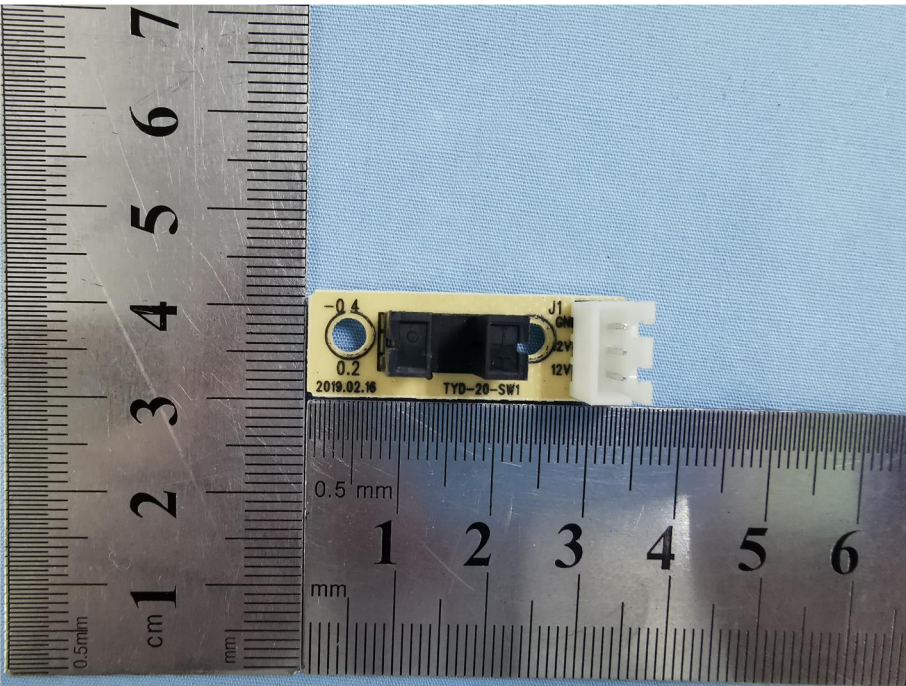


**EUT Housing and Board  
View 2**

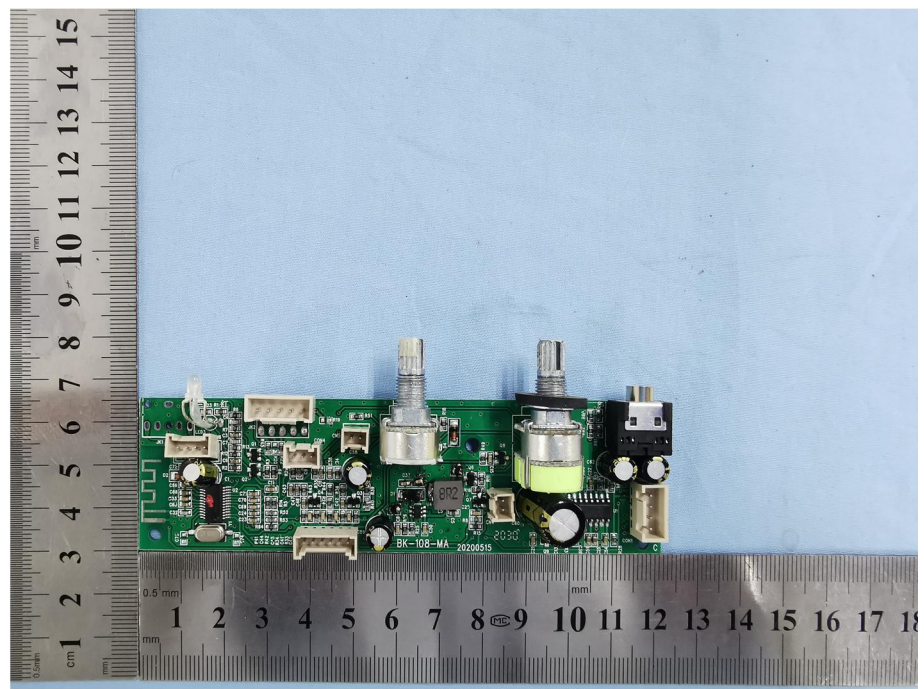




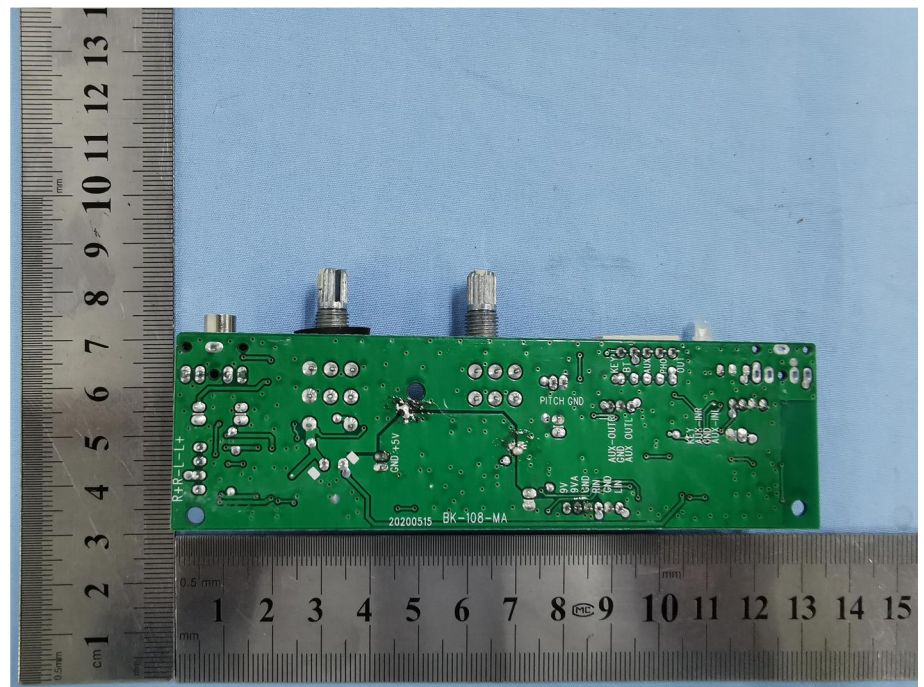
<p style="text-align: center;"><b>Solder Board-Component View 3</b></p>	 <p>A photograph of a yellow PCB component, model TYD-20-SW2, revision 2020.03.02. The component is shown from a top-down perspective, highlighting its soldered connections. It features a white connector on the left, a black component labeled SW1, and a circular component labeled J2 J3. The board is placed on a blue background with a metal ruler for scale, showing dimensions in centimeters and millimeters.</p>
<p style="text-align: center;"><b>Solder Board-Component View 4</b></p>	 <p>A photograph of the same yellow PCB component from a bottom-up perspective, showing the solder joints on the green PCB. The component is placed on a blue background with a metal ruler for scale, showing dimensions in centimeters and millimeters.</p>

<p style="text-align: center;"><b>Solder Board-Component View 5</b></p>	 <p>A photograph of a small green printed circuit board (PCB) component. The board is rectangular and features several silver-colored solder joints and two circular blue pads. It is positioned next to a metal ruler for scale. The ruler shows centimeter and millimeter markings, with a 0.5 mm scale also visible. The component is approximately 4 cm long and 1 cm wide.</p>
<p style="text-align: center;"><b>Solder Board-Component View 6</b></p>	 <p>A photograph of a yellow PCB component with a white connector. The component has a central black rectangular feature and two circular blue pads. It is labeled with "TYD-20-SW1" and "2019.02.16". The connector is labeled "J1" and "12V". It is positioned next to a metal ruler for scale. The ruler shows centimeter and millimeter markings, with a 0.5 mm scale also visible. The component is approximately 4 cm long and 1 cm wide.</p>

**Solder  
Board-Component View  
7**



**Solder  
Board-Component View  
8**



**Antenna View**

