
FCC Test Report

Report No.: AGC03444170605FE01

APPLICATION PURPOSE : Original Equipment
PRODUCT DESIGNATION : Executive Deluxe USB Turntable
BRAND NAME : CROSLEY
MODEL NAME : See page 4
CLIENT : Modern Marketing Concepts, Inc.
DATE OF ISSUE : Jul.12, 2017
STANDARD(S) : FCC Part 15 Subpart B
REPORT VERSION : V1.0

Attestation of Global Compliance (Shenzhen) Co., Ltd



CAUTION:

This report shall not be reproduced except in full without the written permission of the test laboratory and shall not be quoted out of context.



Report Revise Record

Report Version	Revise Time	Issued Date	Valid Version	Notes
V1.0	/	Jul.12, 2017	Valid	Original Report

TABLE OF CONTENTS


1. VERIFICATION OF CONFORMITY	4
2. SYSTEM DESCRIPTION	5
3. MEASUREMENT UNCERTAINTY	5
4. PRODUCT INFORMATION	6
5. SUPPORT EQUIPMENT	7
6. TEST FACILITY	8
7. TEST EQUIPMENT LIST	8
8. FCCLINE CONDUCTED EMISSION TEST	9
8.1. LIMITS OF LINE CONDUCTED EMISSION TEST	9
8.2. BLOCK DIAGRAM OF TEST SETUP	9
8.3. PROCEDURE OF LINE CONDUCTED EMISSION TEST	10
8.4. TEST RESULT OF LINE CONDUCTED EMISSION TEST	11
9. FCC RADIATED EMISSION TEST	13
9.1. LIMITS OF RADIATED EMISSION TEST	13
9.2. BLOCK DIAGRAM OF TEST SETUP	14
9.3. PROCEDURE OF RADIATED EMISSION TEST	15
9.4. TEST RESULT OF RADIATED EMISSION TEST	16
APPENDIX A: PHOTOGRAPHS OF TEST SETUP	20
APPENDIX B: PHOTOGRAPHS OF EUT	22


1. VERIFICATION OF CONFORMITY

Applicant	Modern Marketing Concepts, Inc.
Address	1220 E Oak, St. Louisville, Kentucky, United States 40204
Manufacturer	TIMSEN INTERNATIONAL LIMITED
Address	5F, No. 447, Tianhebei Road, Tianhe District, Guangzhou, Guangdong Province, 510610, China
Product Designation	Executive Deluxe USB Turntable
Brand Name	CROSLEY
Test Model	CR6019D-BR
Series Model	CR6019X-XX
Difference description	All the same except for the appearance color(xx represents the color, they can be replaced by letter from A to Z or blank)
Date of test	Jul.08, 2017 to Jul.09, 2017
Deviation	None
Condition of Test Sample	Normal
Report Template	AGCRT-US-IT/AC

The above equipment was tested by Dongguan Precise Testing Service Co., Ltd. for compliance with the requirements set forth in the FCC Rules and Regulations Part 15, the measurement procedure according to ANSI C63.4:2014. This said equipment in the configuration described in this report shows the maximum emission levels emanating from equipment are within the compliance requirements.

The test results of this report relate only to the tested sample identified in this report.

Tested By 
Time Huang(Huang Nanhui) Jul.09, 2017

Reviewed By 
Forrest Lei(Lei Yonggang) Jul.12, 2017

Approved By 
Solger Zhang(Zhang Hongyi) Jul.12, 2017
Authorized Officer

2. SYSTEM DESCRIPTION

EUT set up procedure:

- 1. Connect the EUT to PC.
- 2. Make sure the EUT operates normally during the test.

Test Mode

TEST MODE DESCRIPTION		
NO.	TEST MODE DESCRIPTION	WORST
1	Data Transmission	V
Note: V means EMI worst mode		

3. MEASUREMENT UNCERTAINTY

The uncertainty is calculated using the methods suggested in the “Guide to the Expression of Uncertainty in Measurement” (GUM) published by ISO.

Conducted measurement: +/- 2.75dB

Radiated measurement: +/- 3.2dB

Summary Of Test Results

FCC Rules	Description Of Test	Result
§15.107	Conduction Emission	Compliant
§15.109	Radiated Emission	Compliant

4. PRODUCT INFORMATION

Housing Type	Plastic and metal
Voltage(by adapter 1)	INPUT: AC100-240V 50/60Hz 1.5A OUTPUT: DC 12V 500mA
Voltage(by adapter 2)	INPUT: AC100-240V~50/60Hz Max 200mA OUTPUT: DC 12V 500 500mA

I/O Port Information (☒Applicable ☐Not Applicable)

I/O Port of EUT			
I/O Port Type	Q'TY	Cable	Tested with
AUX IN Port	1	0	1
Line OUT Port	2	2.0m Unshielded	2
DC INPUT Port	1	1.8m Unshielded	1
Earphone Port	1	0	1
PC Connect Port	1	0	1

5. SUPPORT EQUIPMENT

Device Type	Manufacturer	Model Name	Serial No.	Power Cable
PC	SONY	E1412AYCW	A.E	N/A
PC Adapter	SONY	VGP-AC19V36	A.E	3m unshielded
Earphone	My music	E11	A.E	0.8m unshielded

Note: All the above equipment/cables were placed in worse case positions to maximize emission signals during emission test.

6. TEST FACILITY

Site	Dongguan Precise Testing Service Co., Ltd.
Location	Building D, Baoding Technology Park, Guangming Road2,Dongcheng District, Dongguan, Guangdong, China,
FCC Registration No.	371540
Description	The test site is constructed and calibrated to meet the FCC requirements in documents ANSI C63.4:2014.

7. TEST EQUIPMENT LIST

TEST EQUIPMENT LIST					
Name of Equipment	Manufacturer	Model Number	Serial Number	Last Calibration	Due Calibration
EMI Test Receiver	ROHDE & SCHWARZBECK	ESCI	101417	July 4, 2017	July 3, 2018
Trilog Broadband Antenna (25M-1GHz)	SCHWARZBECK	VULB9160	9160-3355	July 4, 2017	July 3, 2018
Horn Antenna (1G-18GHz)	SCHWARZBECK	BBHA9120D	9120D-1246	July 11, 2016	July 10, 2017
Signal Amplifier	SCHWARZBECK	BBV 9475	9745-0013	July 4, 2017	July 3, 2018
RF Cable	SCHWARZBECK	AK9515E	96221	July 4, 2017	July 3, 2018
3m Anechoic Chamber	CHENGYU	966	PTS-001	June 6, 2017	June 5, 2018
MULTI-DEVICE Positioning Controller	MAX-FULL	MF-7802	MF780208339	N/A	N/A
Active loop antenna (9K-30MHz)	SCHWARZBECK	FMZB1519	1519-038	June 6, 2017	June 5, 2018
Spectrum analyzer	AGILENT	E4407B	MY46185649	June 6, 2017	June 5, 2018
Spectrum Analyzer	AGILENT	E4411B	MY4511453	July 4, 2017	July 3, 2018
Signal Amplifier	SCHWARZBECK	BBV 9718	9718-269	July 4, 2017	July 3, 2018
RF Cable	SCHWARZBECK	AK9515H	96220	July 4, 2017	July 3, 2018
Artificial Mains Network	NARDA	L2-16B	000WX31025	July 8, 2017	July 7, 2018
Artificial Mains Network (AUX)	NARDA	L2-16B	000WX31026	July 8, 2017	July 7, 2018
RF Cable	SCHWARZBECK	AK9515E	96222	July 4, 2017	July 3, 2018
Shielded Room	CHENGYU	843	PTS-002	June 6, 2017	June 5, 2018
Conduction Cable	MXT	SE1	S003	June 6, 2017	June 5, 2018

8. FCCLINE CONDUCTED EMISSION TEST

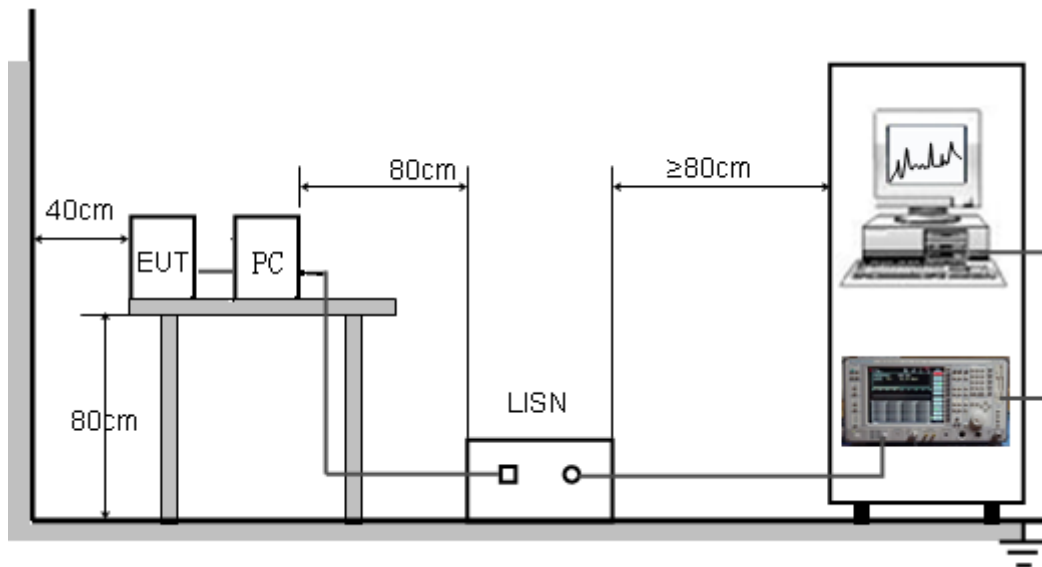
8.1. LIMITS OF LINE CONDUCTED EMISSION TEST

Frequency	Maximum RF Line Voltage	
	Q.P.(dBuV)	Average(dBuV)
150kHz-500kHz	66-56	56-46
500kHz-5MHz	56	46
5MHz-30MHz	60	50

Note:

1. The lower limit shall apply at the transition frequency.
2. The limit decreases linearly with the logarithm of the frequency in the range 0.15 MHz to 0.50MHz.

8.2. BLOCK DIAGRAM OF TEST SETUP



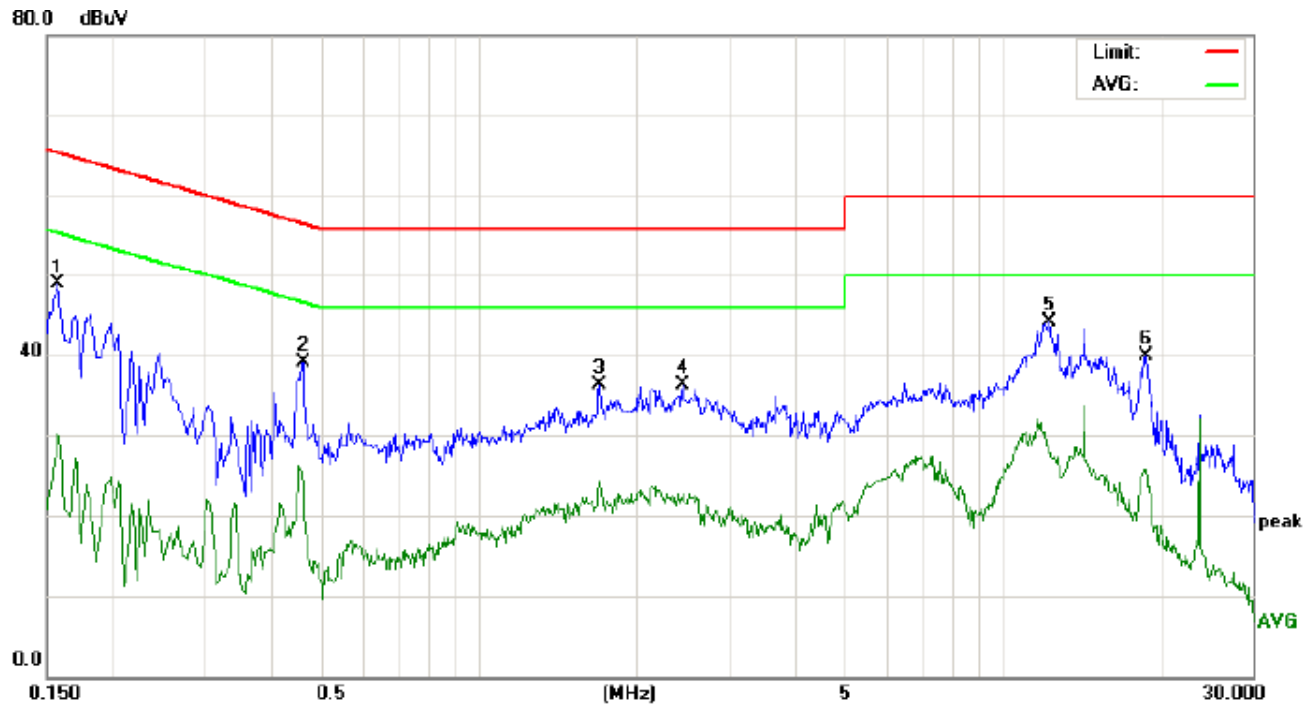
8.3. PROCEDURE OF LINE CONDUCTED EMISSION TEST

- (1) The equipment was set up as per the test configuration to simulate typical actual usage per the user's manual. When the EUT is a tabletop system, a wooden table with a height of 0.8 meters is used and is placed on the ground plane as per ANSI C63.4 (see Test Facility for the dimensions of the ground plane used). When the EUT is a floor-standing equipment, it is placed on the ground plane which has a 3-12 mm non-conductive covering to insulate the EUT from the ground plane.
- (2) Support equipment, if needed, was placed as per ANSI C63.4.
- (3) All I/O cables were positioned to simulate typical actual usage as per ANSI C63.4.
- (4) The EUT received voltage by adapter which receive AC120V/60Hz power from a LISN.
- (5) The EUT test program was started. Emissions were measured on each current carrying line of the EUT using a spectrum Analyzer / Receiver connected to the LISN powering the EUT. The LISN has two monitoring points: Line 1 (Hot Side) and Line 2 (Neutral Side). Two scans were taken: one with Line 1 connected to Analyzer / Receiver and Line 2 connected to a 50 ohm load; the second scan had Line 1 connected to a 50 ohm load and Line 2 connected to the Analyzer / Receiver.
- (6) Analyzer / Receiver scanned from 150 kHz to 30MHz for emissions in each of the test modes.
- (7) During the above scans, the emissions were maximized by cable manipulation.
- (8) A scan was taken on both power lines, Line 1 and Line 2, recording at least the six highest emissions.
- (9) Emission frequency and amplitude were recorded into a computer in which correction factors were used to calculate the emission level and compare reading to the applicable limit. If EUT emission level was less -2dB to the A.V. limit in Peak mode, then the emission signal was re-checked using Q.P and Average detector.

The test data of the worst case condition (mode 1) was reported on the Summary Data page.

8.4. TEST RESULT OF LINE CONDUCTED EMISSION TEST

LINE CONDUCTED EMISSION TEST-L



Site: Conduction

Phase: **L1**

Temperature: 26

Limit: FCC Class B Conduction(QP)

Power:

Humidity: 60 %

EUT: Executive Deluxe USB Turntable

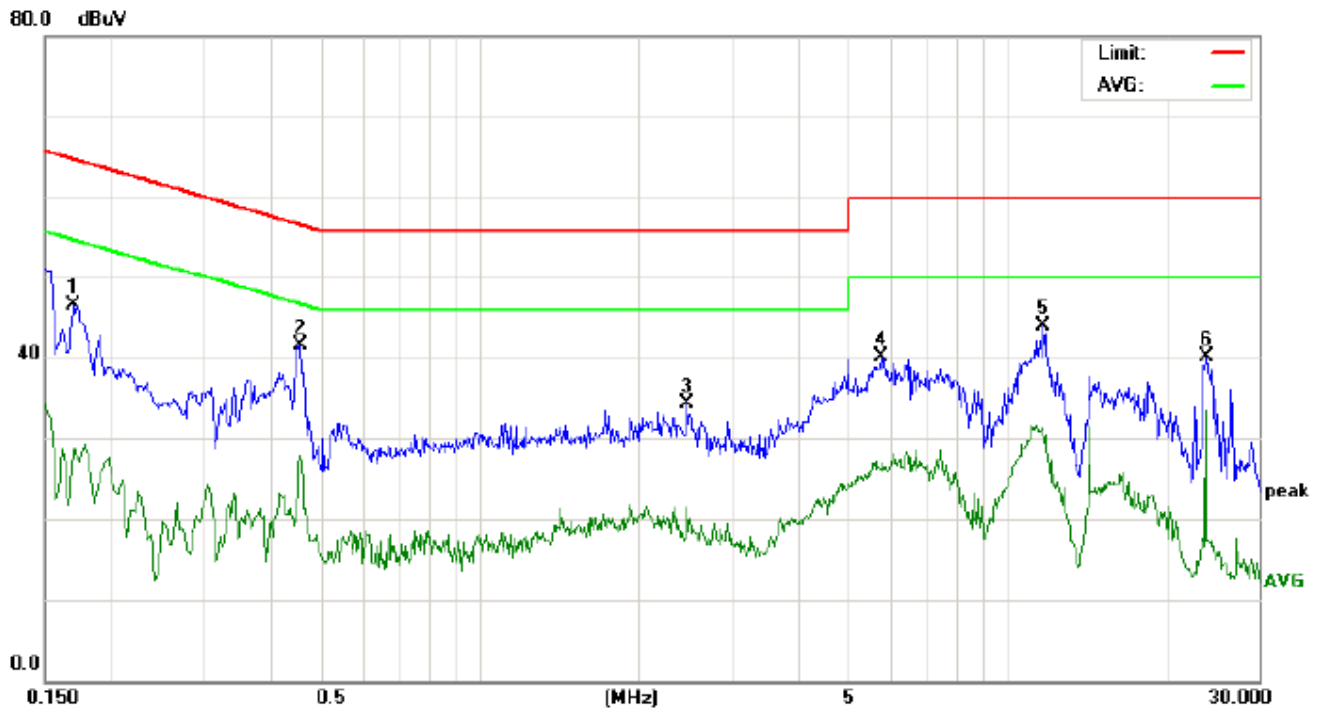
M/N: CR6019D-BR

Mode: Data transmission

Note:

No.	Freq. (MHz)	Reading Level (dBuV)			Correct Factor dB	Measurement (dBuV)			Limit (dBuV)		Margin (dB)		P/F	Comment
		Peak	QP	AVG		Peak	QP	AVG	QP	AVG	QP	AVG		
1	0.1580	32.47		10.80	10.17	42.64		20.97	65.56	55.56	-22.92	-34.59	P	
2	0.4620	28.82		13.49	10.37	39.19		23.86	56.66	46.66	-17.47	-22.80	P	
3	1.7019	25.90		13.94	10.32	36.22		24.26	56.00	46.00	-19.78	-21.74	P	
4	2.4539	25.95		12.37	10.41	36.36		22.78	56.00	46.00	-19.64	-23.22	P	
5	12.2577	34.04		17.70	10.14	44.18		27.84	60.00	50.00	-15.82	-22.16	P	
6	18.7419	29.86		15.67	10.12	39.98		25.79	60.00	50.00	-20.02	-24.21	P	

LINE CONDUCTED EMISSION TEST-N



Site: Conduction

Phase: **N**

Temperature: 26

Limit: FCC Class B Conduction(QP)

Power:

Humidity: 60 %

EUT: Executive Deluxe USB Turntable

M/N: CR6019D-BR

Mode: Data transmission

Note:

No.	Freq. (MHz)	Reading_Level (dBuV)			Correct Factor dB	Measurement (dBuV)			Limit (dBuV)		Margin (dB)		P/F	Comment
		Peak	QP	AVG		Peak	QP	AVG	QP	AVG	QP	AVG		
1	0.1700	36.37		18.56	10.18	46.55		28.74	64.96	54.96	-18.41	-26.22	P	
2	0.4580	31.10		17.54	10.37	41.47		27.91	56.73	46.73	-15.26	-18.82	P	
3	2.4780	23.93		11.03	10.42	34.35		21.45	56.00	46.00	-21.65	-24.55	P	
4	5.7499	29.74		16.06	10.26	40.00		26.32	60.00	50.00	-20.00	-23.68	P	
5	11.7018	33.73		21.19	10.13	43.86		31.32	60.00	50.00	-16.14	-18.68	P	
6	23.9379	29.92		7.27	10.11	40.03		17.38	60.00	50.00	-19.97	-32.62	P	

RESULT: PASS

9. FCC RADIATED EMISSION TEST

9.1. LIMITS OF RADIATED EMISSION TEST

Frequency (MHz)	Distance (m)	Maximum Field Strength Limit (dBuV/m/ Q.P.)
30~88	3	40.0
88~216	3	43.5
216~960	3	46.0
960~1000	3	54.0

Note: The lower limit shall apply at the transition frequency.

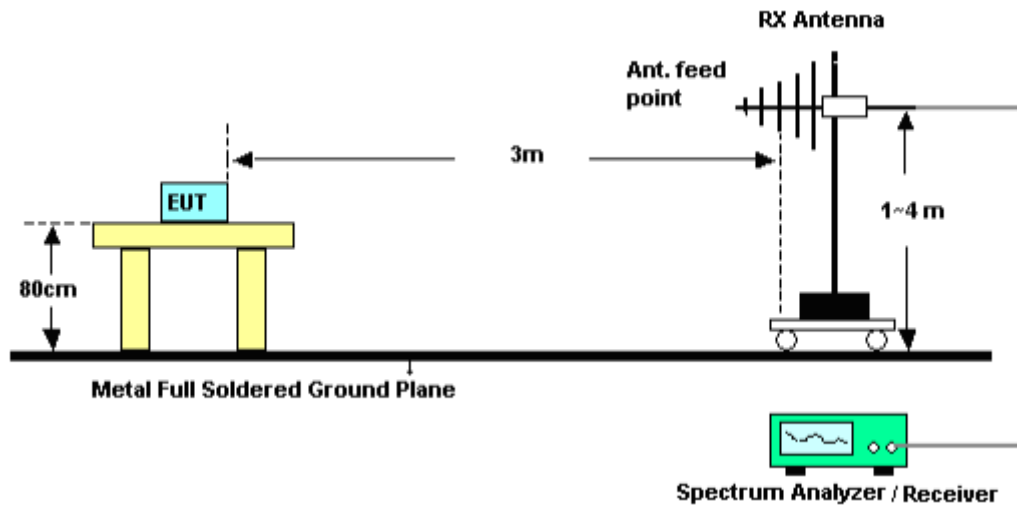
9.1.1 The following table is the setting of spectrum analyzer and receiver:

Spectrum Parameter	Setting
Start ~Stop Frequency	9KHz~150KHz/RB 200Hz for QP
Start ~Stop Frequency	150KHz~30MHz/RB 9KHz for QP
Start ~Stop Frequency	30MHz~1000MHz/RB 120KHz for QP
Start ~Stop Frequency	1GHz~13GHz RBW 1MHz/ VBW 3MHz for Peak, RBW 1MHz/VBW 10Hz for Average

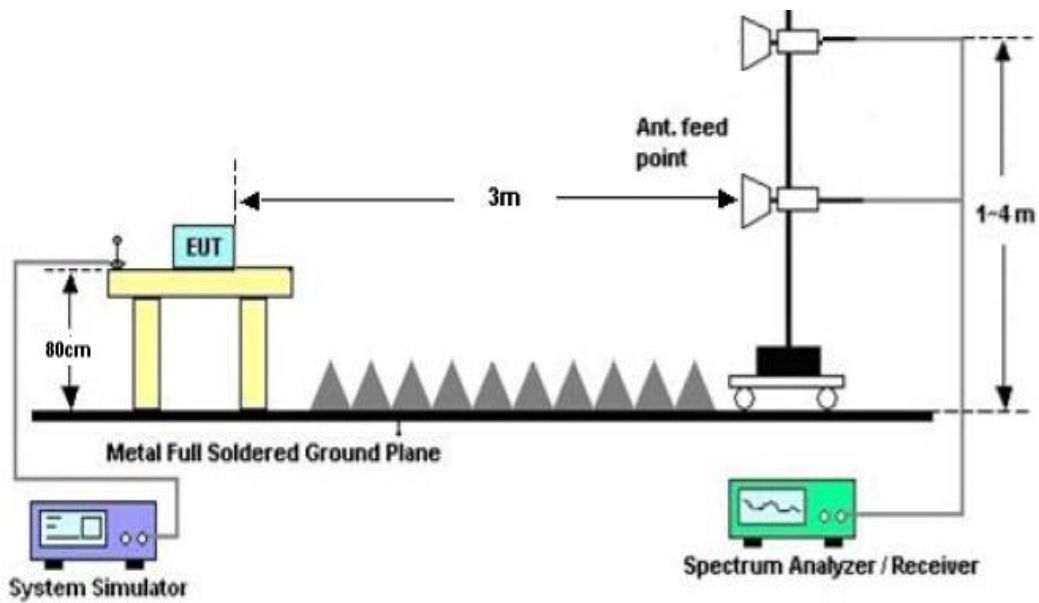
Receiver Parameter	Setting
Start ~Stop Frequency	9KHz~150KHz/RB 200Hz for QP
Start ~Stop Frequency	150KHz~30MHz/RB 9KHz for QP
Start ~Stop Frequency	30MHz~1000MHz/RB 120KHz for QP

9.2. BLOCK DIAGRAM OF TEST SETUP

RADIATED EMISSION TEST SETUP 30MHz-1000MHz



RADIATED EMISSION TEST SETUP ABOVE 1000MHz

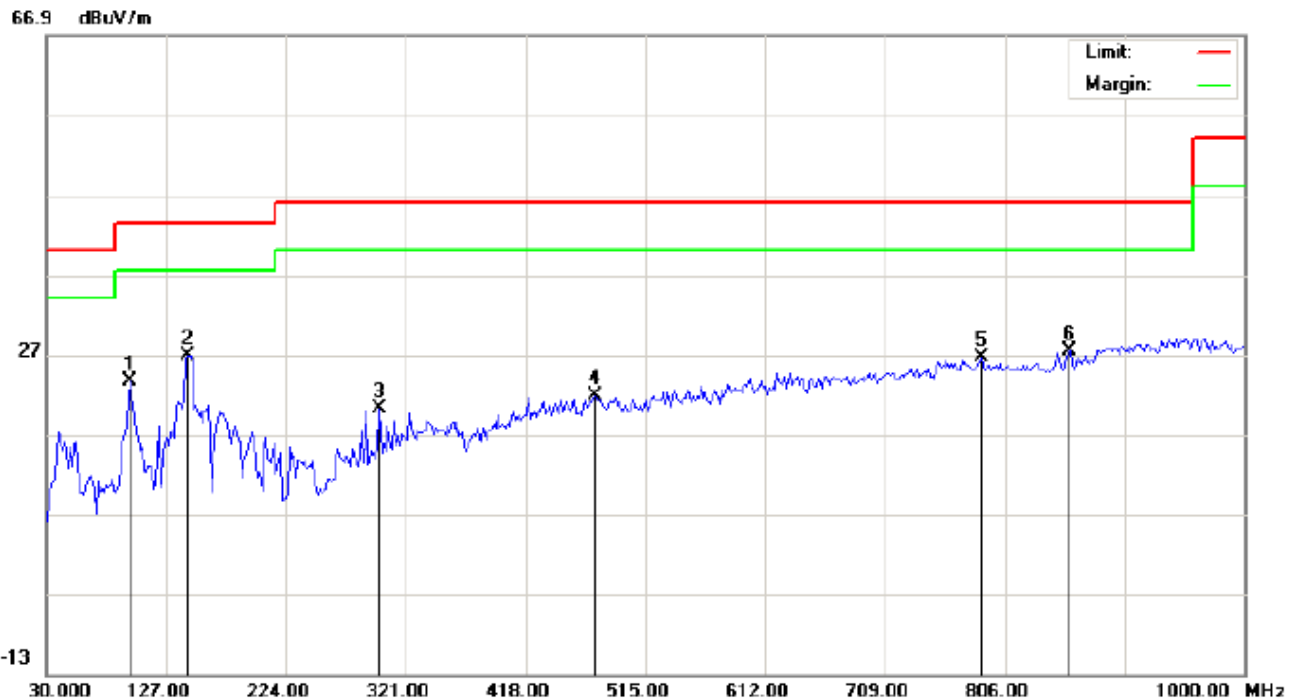


9.3. PROCEDURE OF RADIATED EMISSION TEST

1. Configure the EUT according to ANSI C63.4. The EUT was placed on the top of the turntable 0.8 meter above ground. The phase center of the receiving antenna mounted on the top of a height-variable antenna tower was placed 3 meters far away from the turntable.
2. Power on the EUT and all the supporting units. The turntable was rotated by 360 degrees to determine the position of the highest radiation.
3. The height of the broadband receiving antenna was varied between one meter and four meters above ground to find the maximum emissions field strength of both horizontal and vertical polarization.
4. For each suspected emissions, the antenna tower was scan (from 1 M to 4 M) and then the turntable was rotated (from 0 degree to 360 degrees) to find the maximum reading.
5. Set the test-receiver system to Peak or CISPR quasi-peak Detect Function with specified bandwidth under Maximum Hold Mode.
6. For emissions above 1GHz, use 1MHz RBW and 3MHz VBW for peak reading. Then 1MHz RBW and 10Hz VBW for average reading in spectrum analyzer.
7. When the radiated emissions limits are expressed in terms of the average value of the emissions, and pulsed operation is employed, the measurement field strength shall be determined by averaging over one complete pulse train, including blanking intervals, as long as the pulse train does not exceed 0.1 seconds. As an alternative (provided the transmitter operates for longer than 0.1 seconds) or in cases where the pulse train exceeds 0.1 seconds, the measured field strength shall be determined from the average absolute voltage during a 0.1 second interval during which the field strength is at its maximum values.

9.4. TEST RESULT OF RADIATED EMISSION TEST

Radiated Emission Test at 3m Distance(Below 1G)-Horizontal



Site: site #1

Polarization: *Horizontal*

Temperature: 22.4

Limit: FCC Class B 3M Radiation

Power:

Humidity: 52.5 %

EUT: Executive Deluxe USB Turntable

Distance:

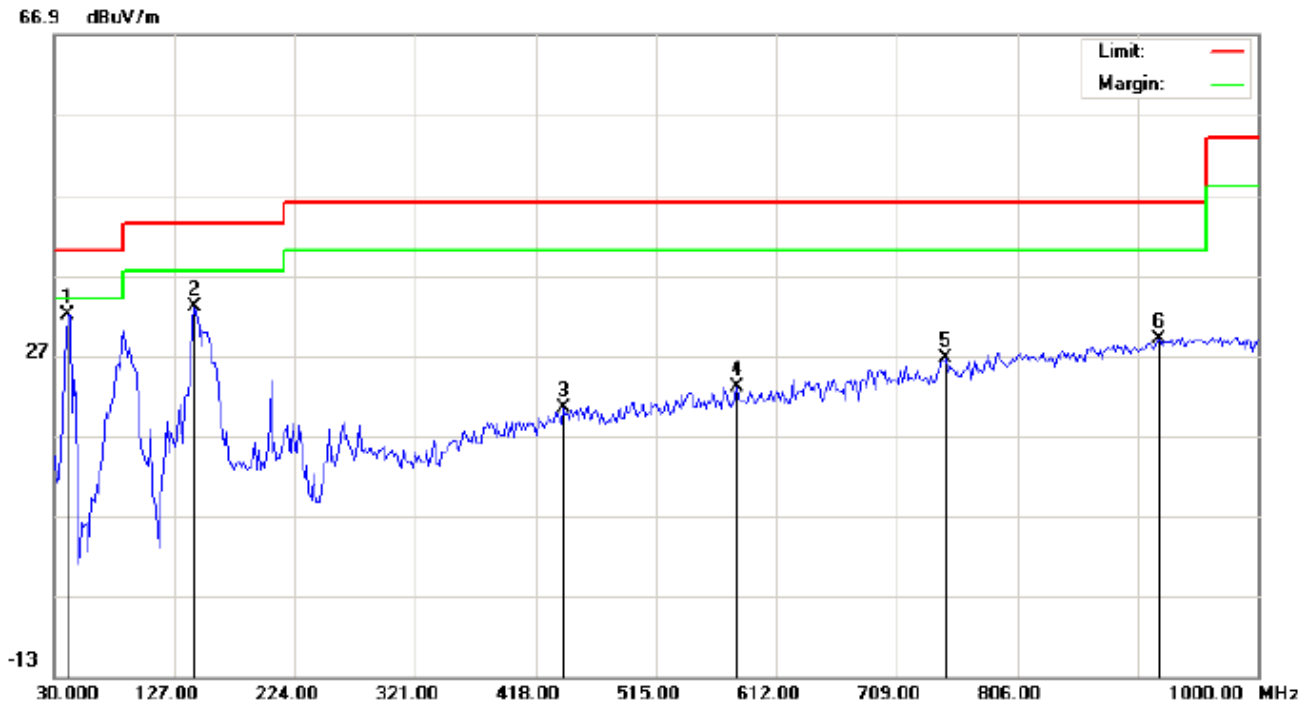
M/N: CR6019D-BR

Mode: Data transmission

Note:

No.	Mk	Freq.	Reading	Factor	Measurement	Limit	Over	Detector	Antenna Height	Table Degree	Comment
		MHz	dBuV	dB/m	dBuV/m	dBuV/m	dB		cm	degree	
1		97.9000	15.22	8.38	23.60	43.50	-19.90	peak			
2	*	144.7833	12.77	14.04	26.81	43.50	-16.69	peak			
3		299.9833	4.75	15.41	20.16	46.00	-25.84	peak			
4		474.5833	1.03	20.86	21.89	46.00	-24.11	peak			
5		786.6000	-0.46	27.14	26.68	46.00	-19.32	peak			
6		857.7333	-0.17	27.51	27.34	46.00	-18.66	peak			

Radiated Emission Test at 3m Distance(Below 1G)-Vertical



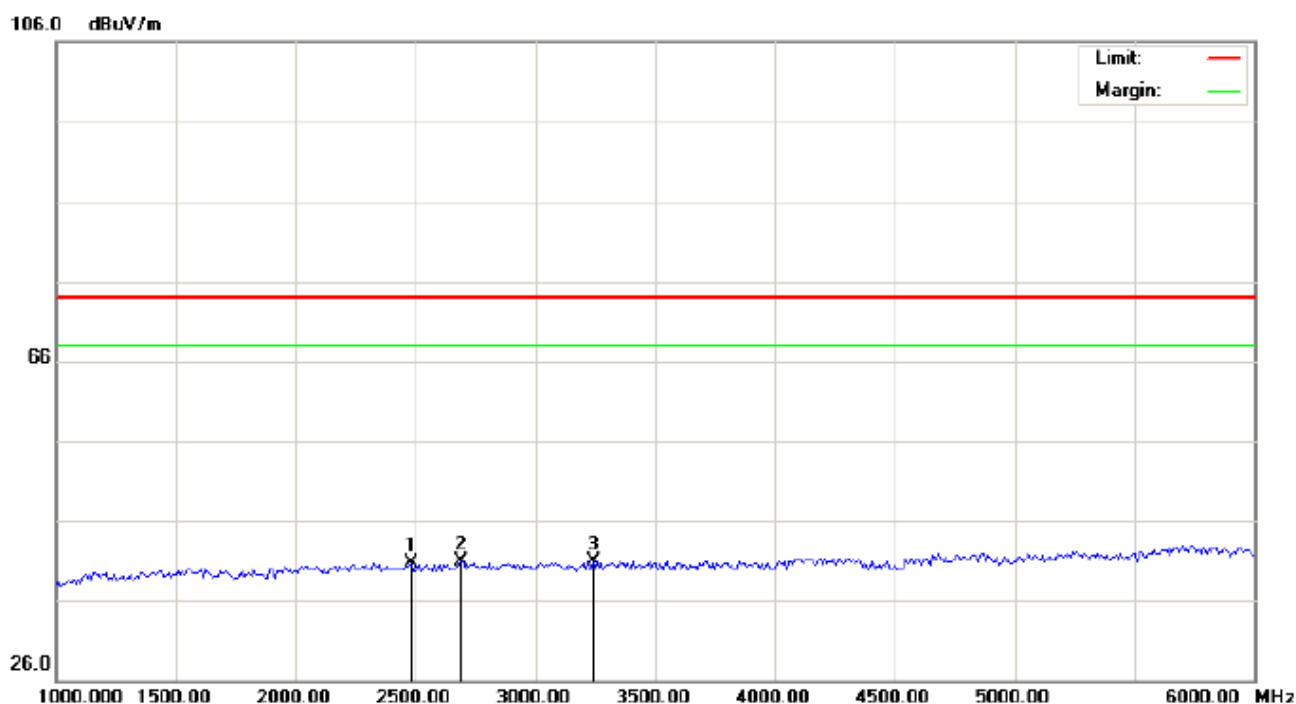
Site: site #1
Limit: FCC Class B 3M Radiation
EUT: Executive Deluxe USB Turntable
M/N: CR6019D-BR
Mode: Data Transmission
Note:

Polarization: **Vertical**
Power:
Distance:

Temperature: 22.4
Humidity: 52.5 %

No.	Mk	Freq.	Reading	Factor	Measurement	Limit	Over	Detector	Antenna Height	Table Degree	Comment
		MHz	dBuV	dB/m	dBuV/m	dBuV/m	dB		cm	degree	
1	*	41.3167	23.27	8.81	32.08	40.00	-7.92	peak			
2		143.1667	17.78	15.22	33.00	43.50	-10.50	peak			
3		440.6333	0.00	20.31	20.31	46.00	-25.69	peak			
4		579.6667	0.41	22.63	23.04	46.00	-22.96	peak			
5		747.8000	0.09	26.57	26.66	46.00	-19.34	peak			
6		920.7833	-0.23	29.19	28.96	46.00	-17.04	peak			

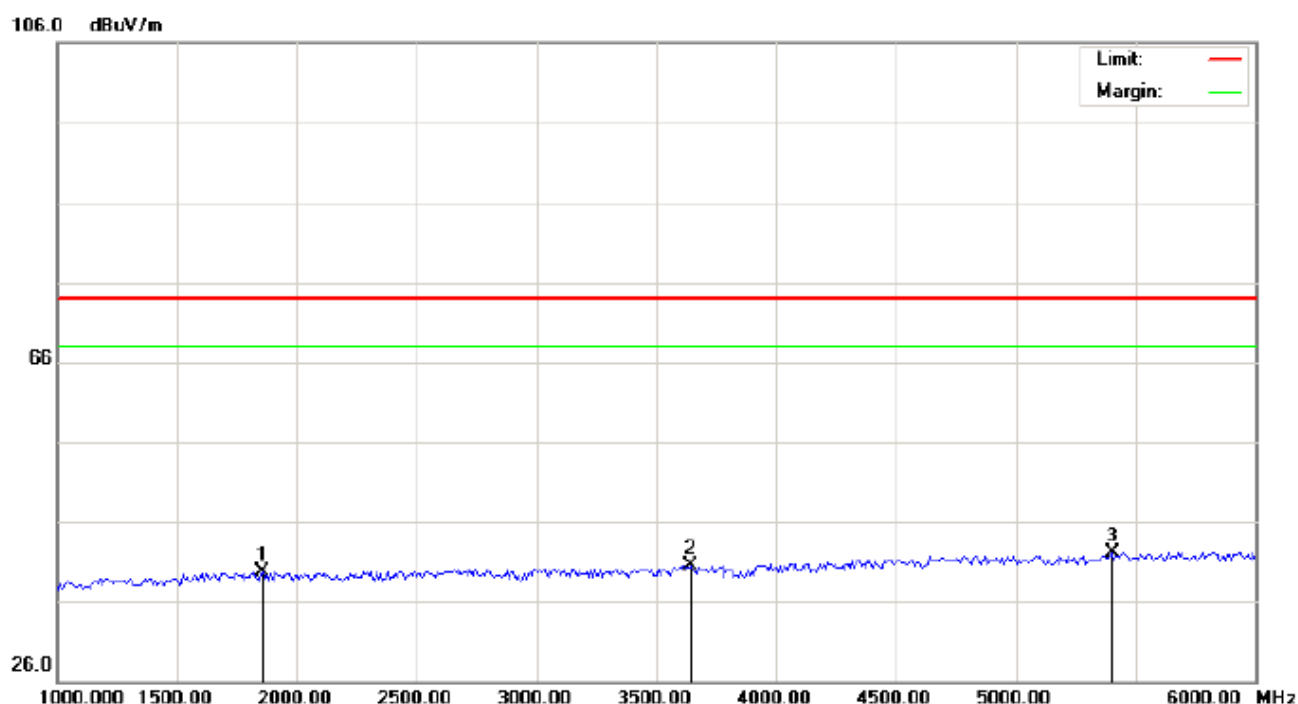
Radiated Emission Test at 3m Distance(Above 1G)-Horizontal



Site: site #1 Polarization: Horizontal Temperature: 26
Limit: FCC Class B 3M Radiation above 1GHz(PK) Power: Humidity: 60 %
EUT: Executive Deluxe USB Turntable Distance:
M/N: CR6019D-BR
Mode: Data transmission
Note:

No.	Mk	Freq.	Reading	Factor	Measurement	Limit	Over	Detector	Antenna Height	Table Degree	Comment
		MHz	dBuV	dB/m	dBuV/m	dBuV/m	dB		cm	degree	
1		2483.333	30.26	10.41	40.67	74.00	-33.33	peak			
2	*	2691.667	30.01	10.89	40.90	74.00	-33.10	peak			
3		3241.667	29.02	11.87	40.89	74.00	-33.11	peak			

Radiated Emission Test at 3m Distance(Above 1G)-Vertical



Site: site #1 Polarization: **Vertical** Temperature: 26
Limit: FCC Class B 3M Radiation above 1GHz(PK) Power: Humidity: 60 %
EUT: Executive Deluxe USB Turntable Distance:
M/N: CR6019D-BR
Mode: Data transmission
Note:

No.	Mk	Freq.	Reading	Factor	Measurement	Limit	Over	Detector	Antenna Height	Table Degree	Comment
		MHz	dBuV	dB/m	dBuV/m	dBuV/m	dB		cm	degree	
1		1858.333	31.31	8.39	39.70	74.00	-34.30	peak			
2		3641.667	27.50	12.98	40.48	74.00	-33.52	peak			
3	*	5400.000	41.88	0.19	42.07	74.00	-31.93	peak			

RESULT: PASS

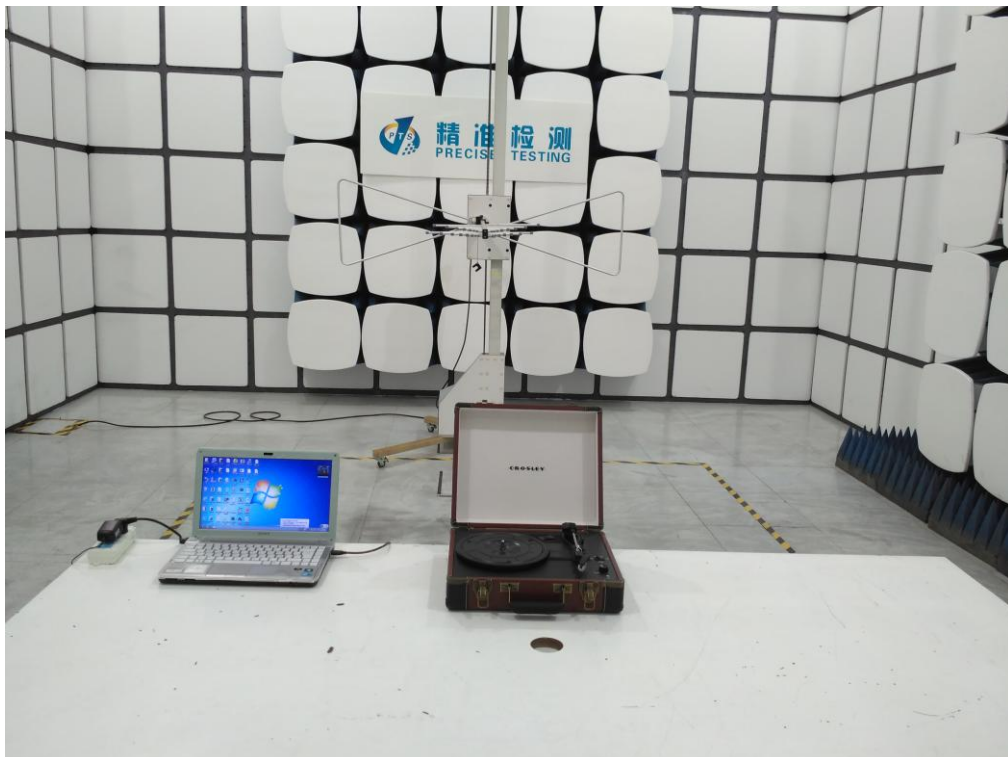
Note: Measurement = Reading + Factor, Over = Measurement – Limit.
6~13GHz at least have 20dB margin. No recording in the test report.

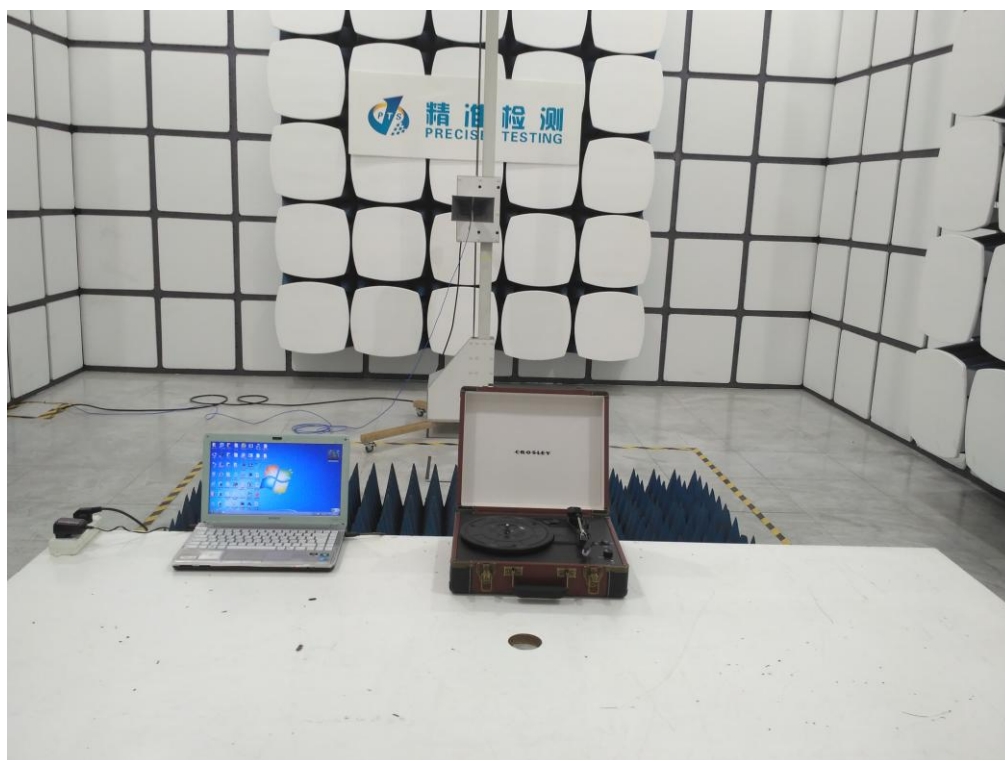
APPENDIX A: PHOTOGRAPHS OF TEST SETUP

FCC LINE CONDUCTED EMISSION TEST SETUP



FCC RADIATED EMISSION TEST SETUP



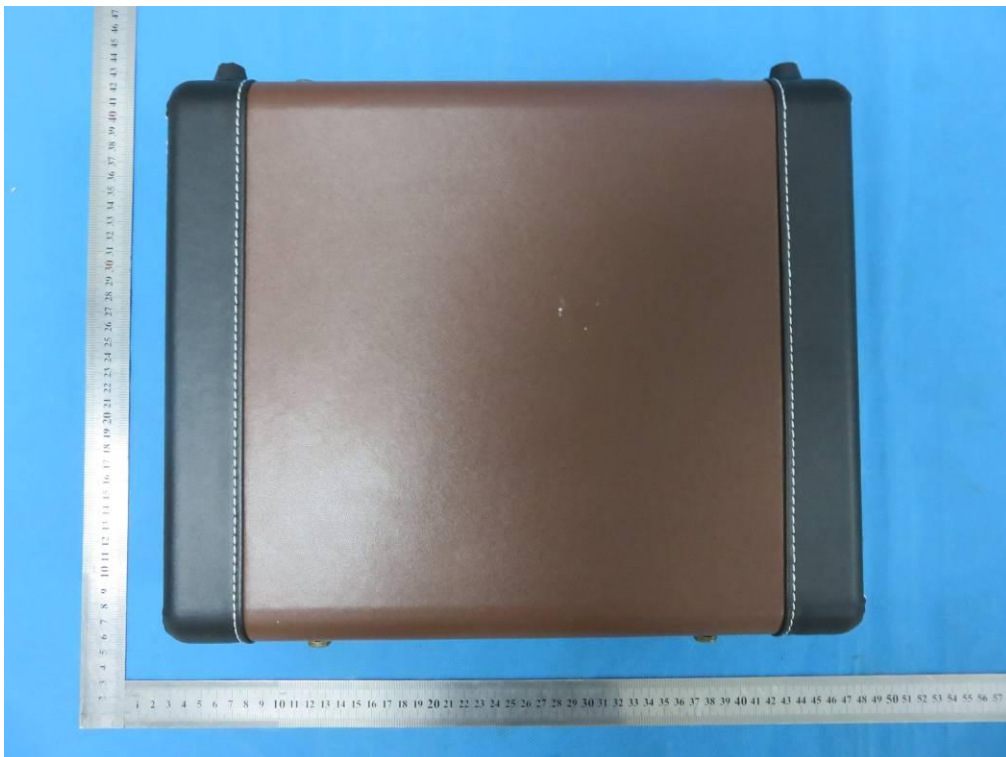


APPENDIX B: PHOTOGRAPHS OF EUT

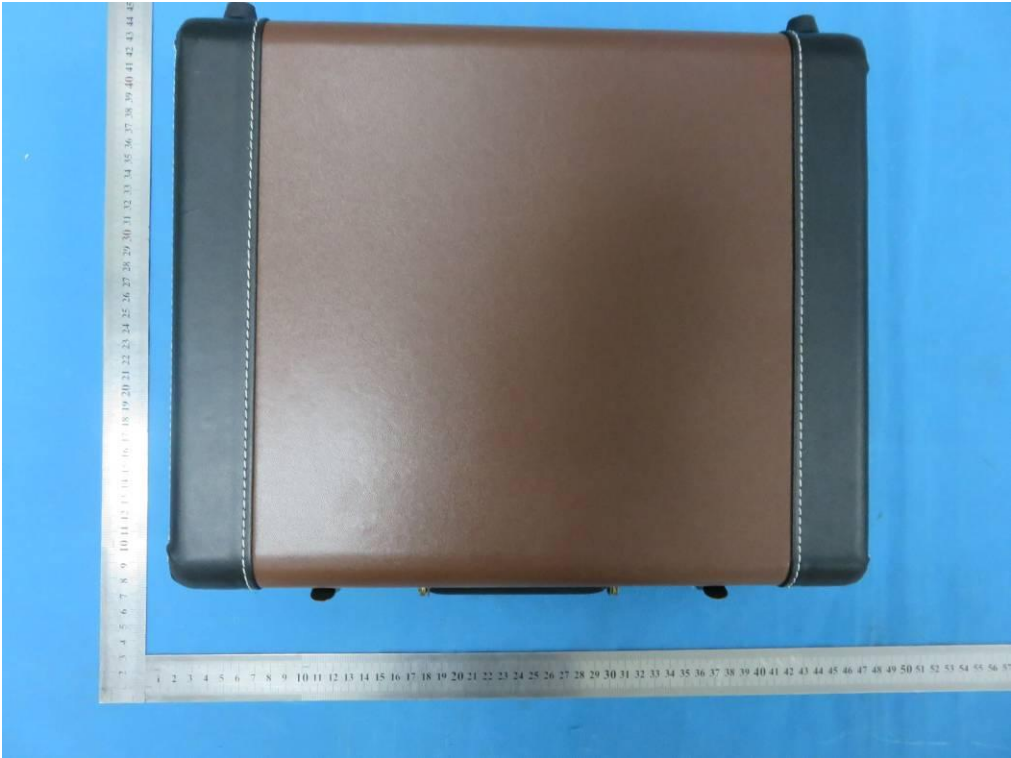
ALL VIEW OF EUT



TOP VIEW OF EUT



BOTTOM VIEW OF EUT



FRONT VIEW OF EUT



BACK VIEW OF EUT



LEFT VIEW OF EUT



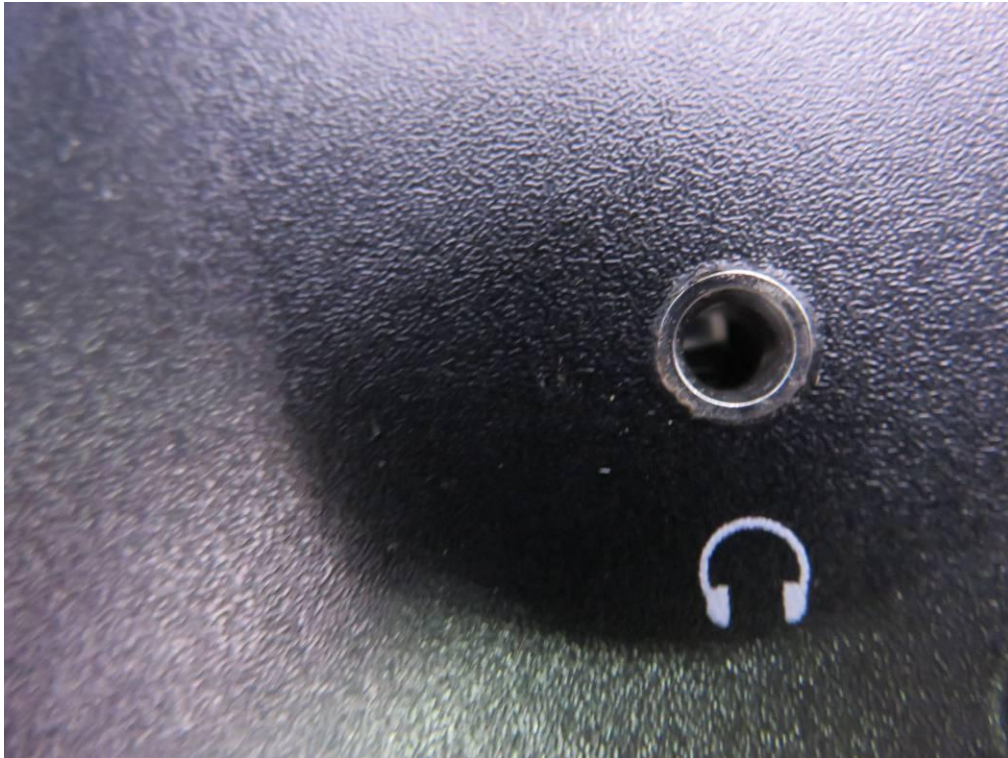
RIGHT VIEW OF EUT



VIEW OF EUT (PORT)-1



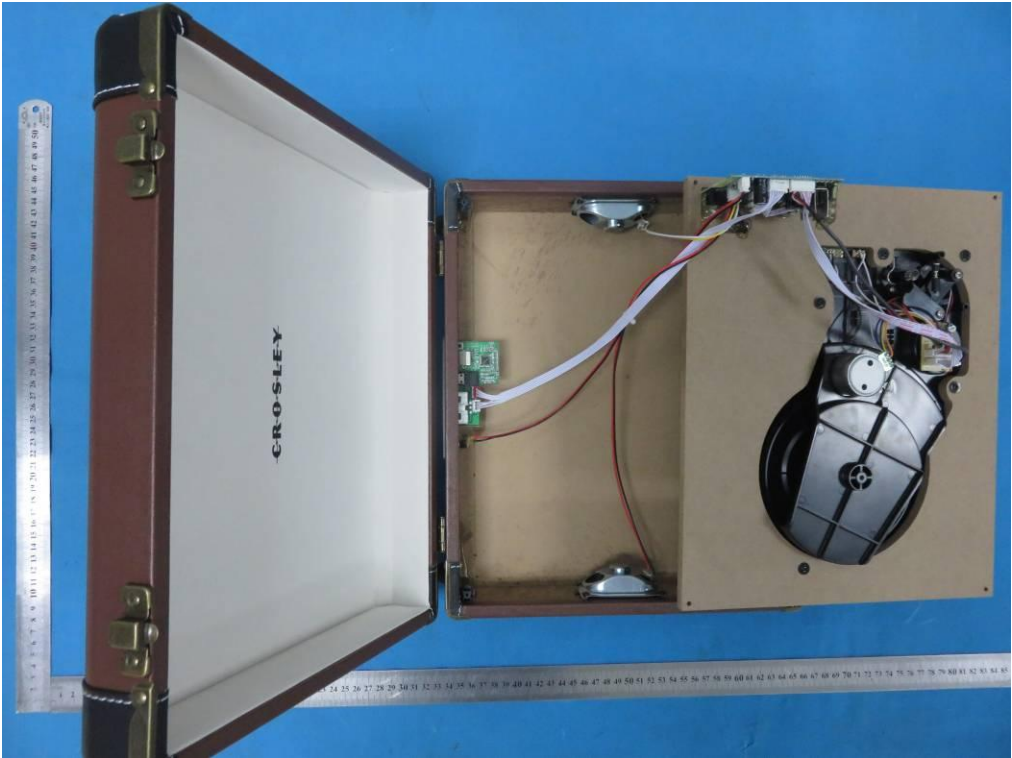
VIEW OF EUT (PORT)-2



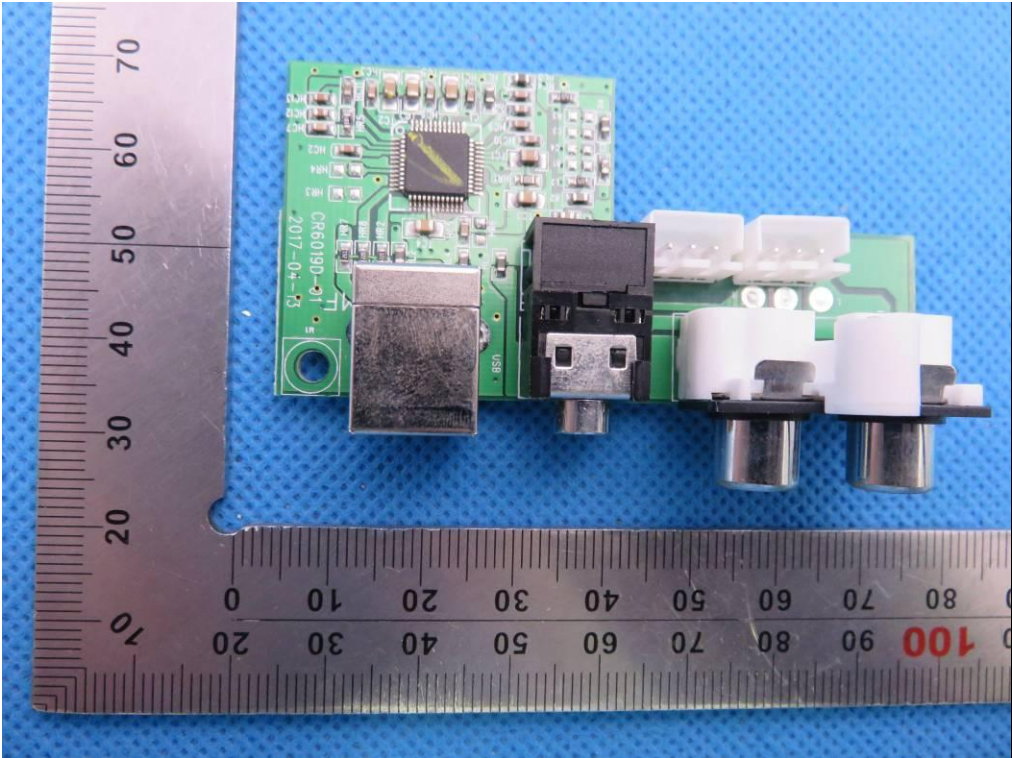
OPEN VIEW OF EUT-1



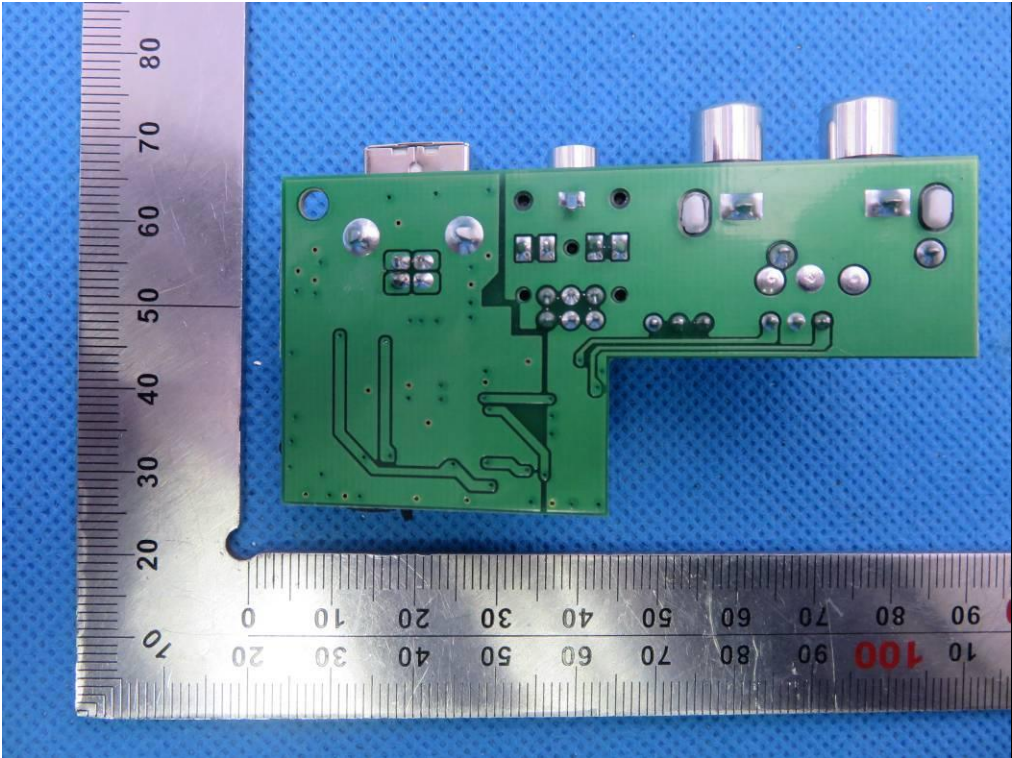
OPEN VIEW OF EUT-2



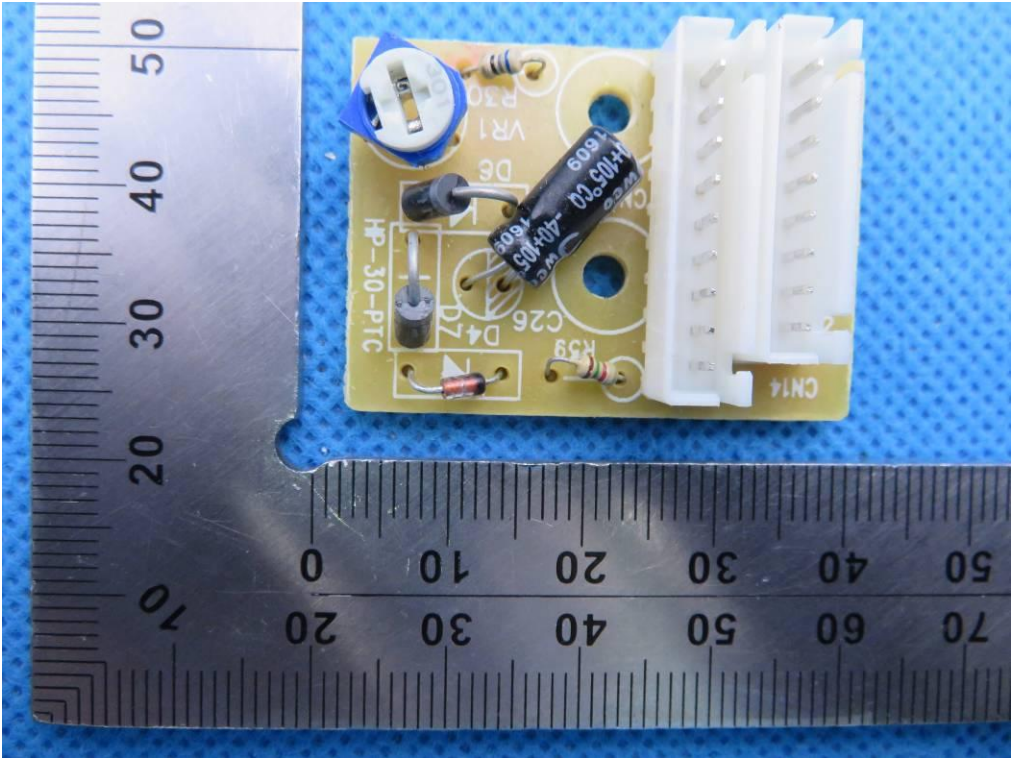
INTERNAL VIEW OF EUT-1



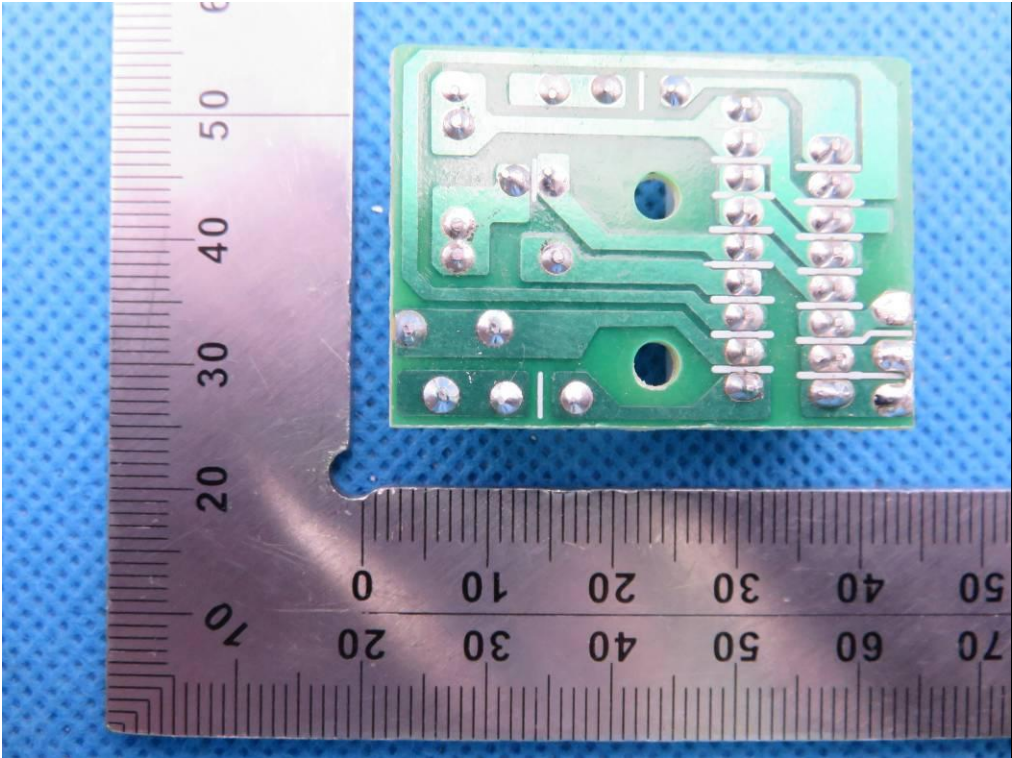
INTERNAL VIEW OF EUT-2



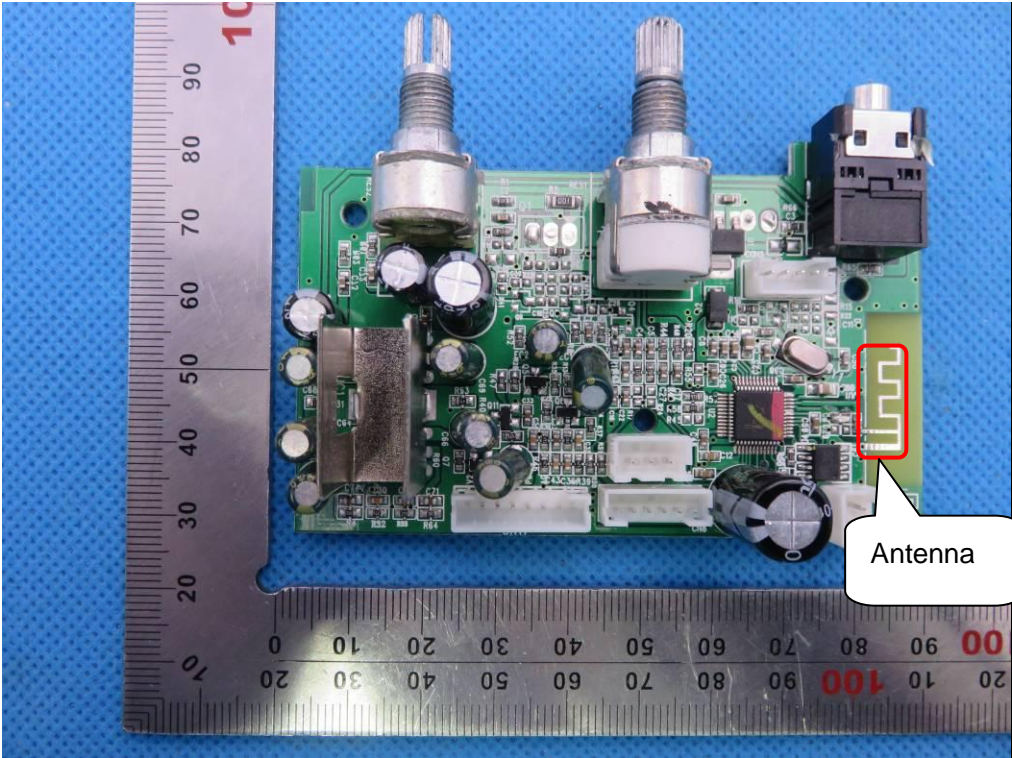
INTERNAL VIEW OF EUT-3



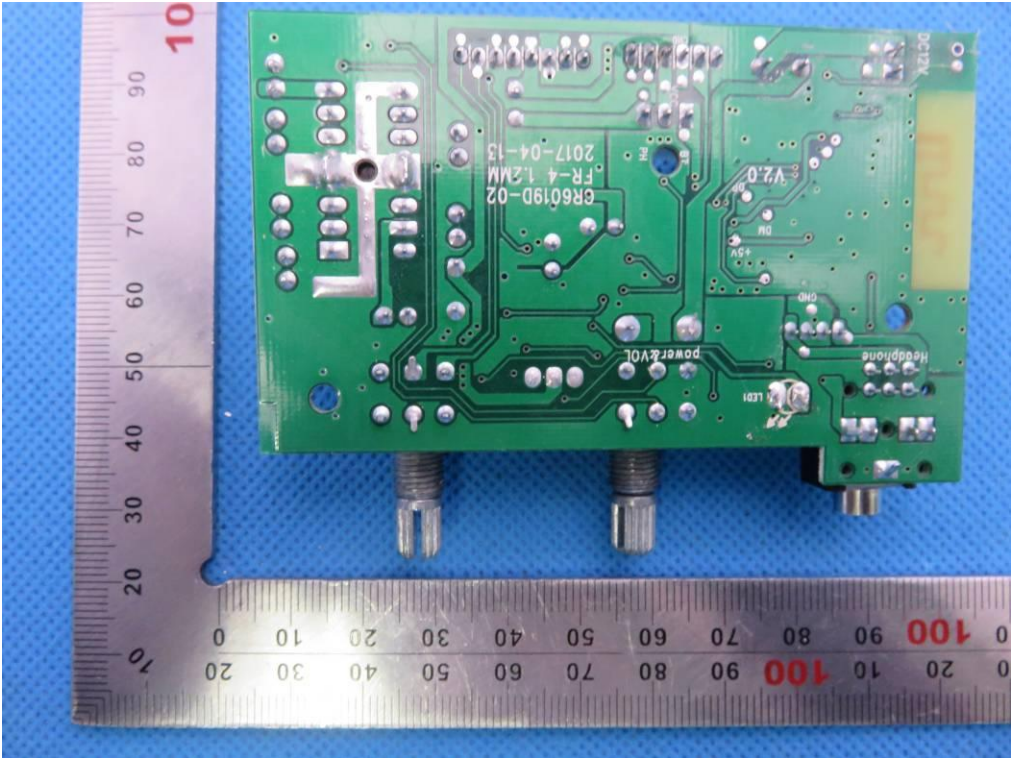
INTERNAL VIEW OF EUT-4



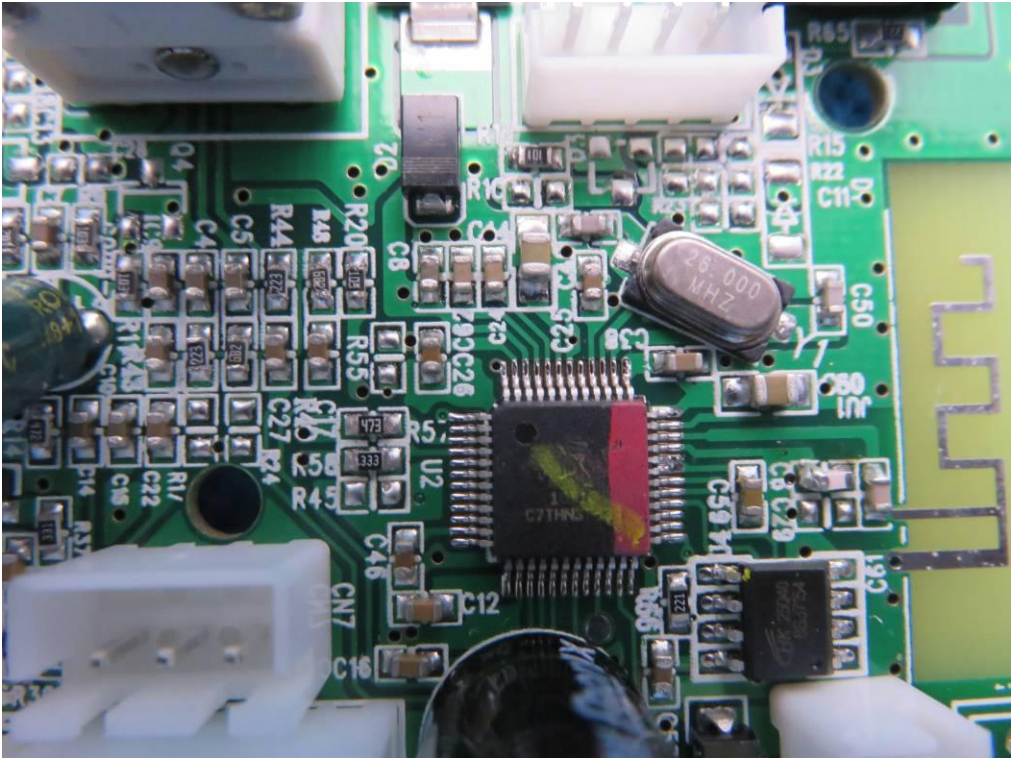
INTERNAL VIEW OF EUT-5



INTERNAL VIEW OF EUT-6



INTERNAL VIEW OF EUT-7



VIEW OF ADAPTER-1



VIEW OF ADAPTER-2



----END OF REPORT----