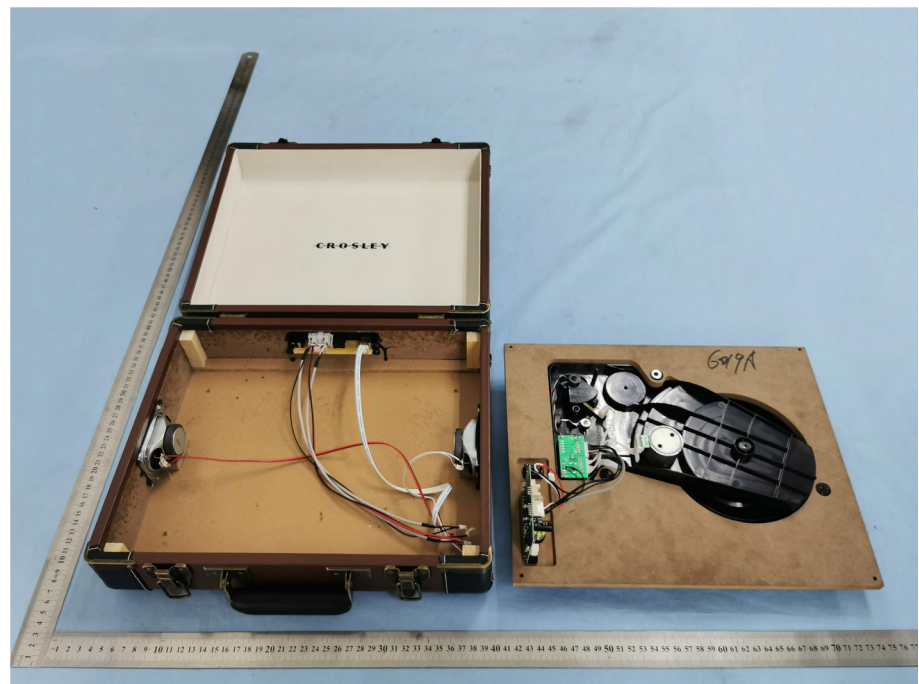


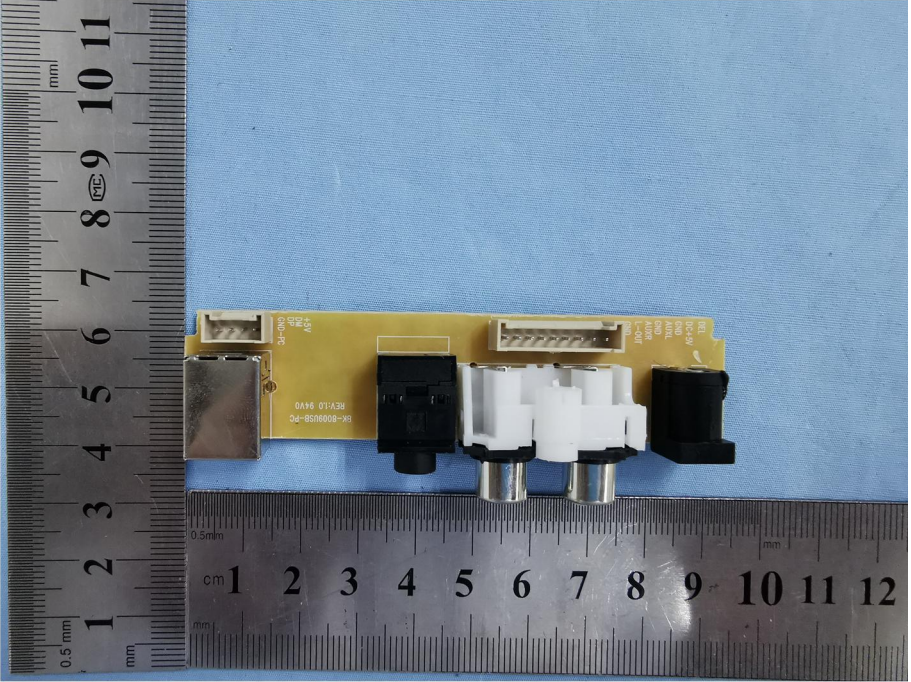
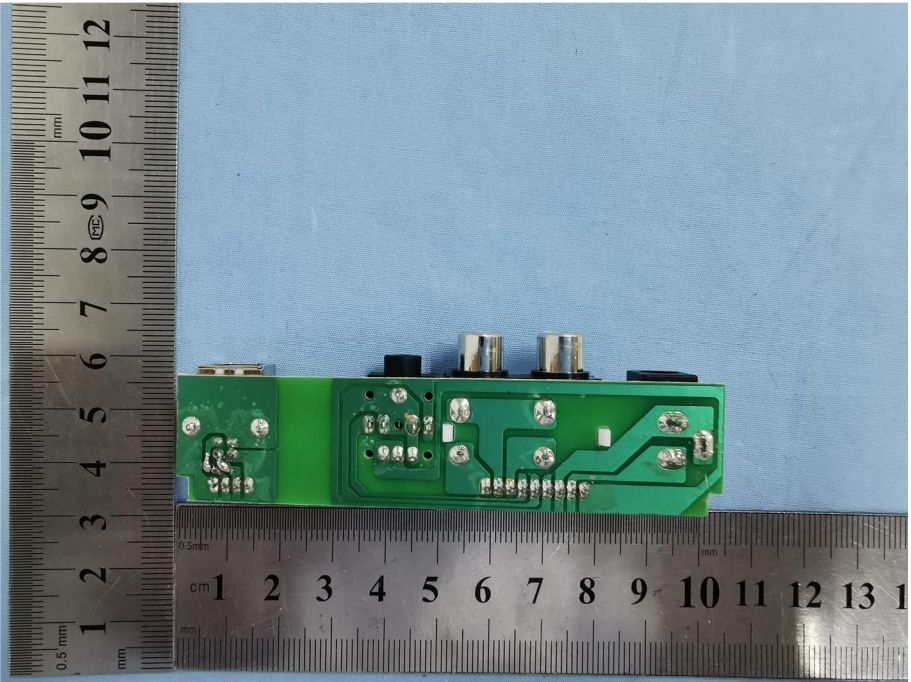
EXHIBIT 3 - EUT INTERNAL PHOTOGRAPHS

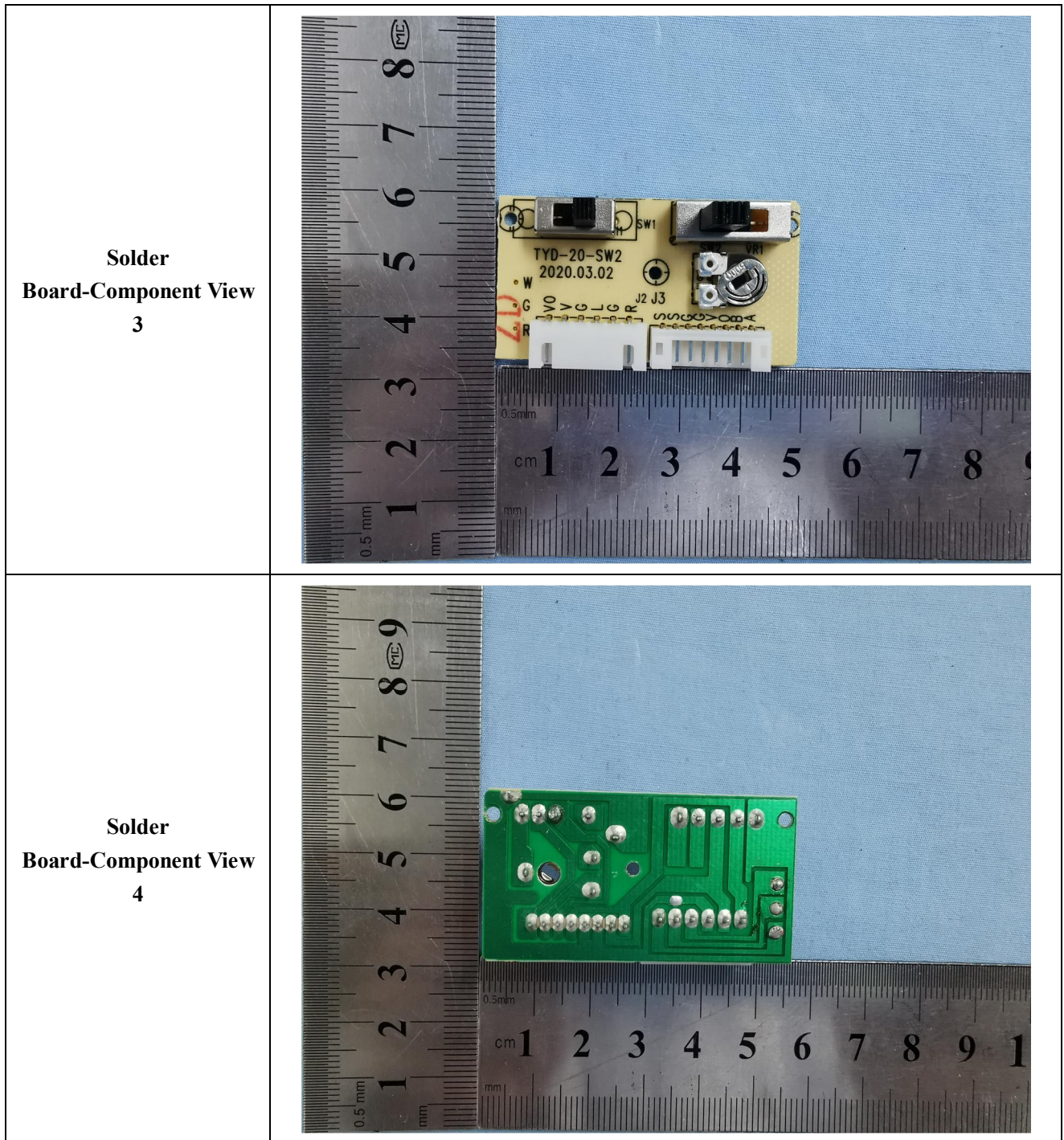
**EUT Housing and Board
View 1**

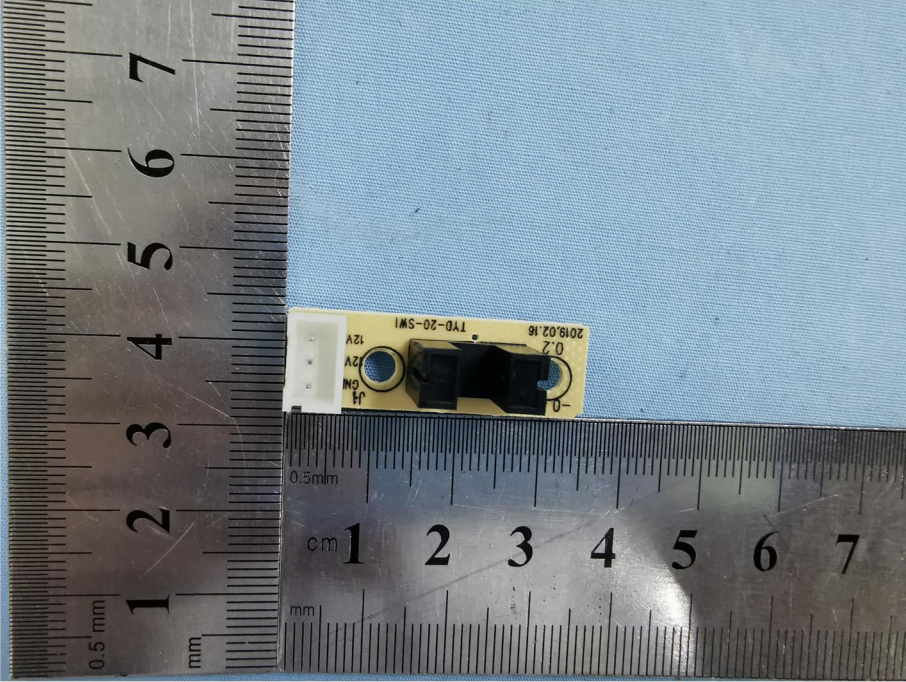
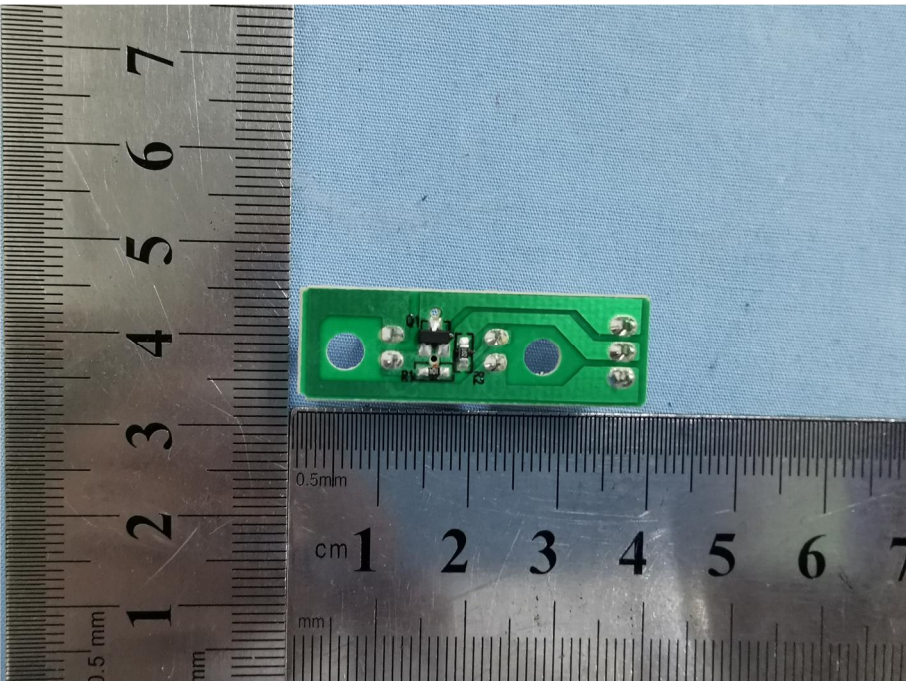


**EUT Housing and Board
View 2**

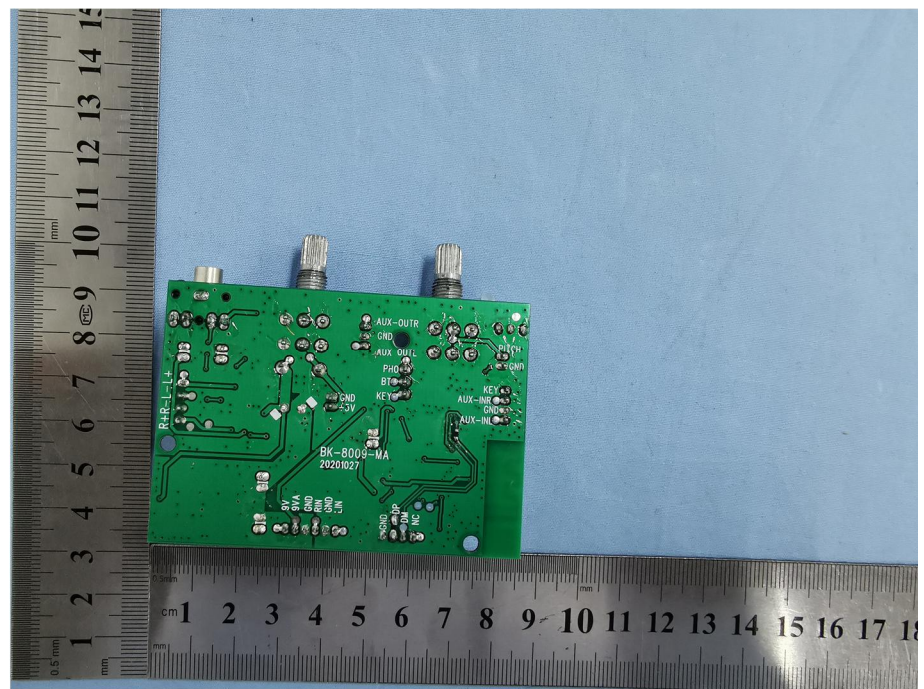


<p style="text-align: center;">Solder Board-Component View 1</p>	 <p>A photograph showing a yellow PCB component with various connectors and components. It is placed on a blue background with two rulers for scale. The top ruler shows centimeters from 1 to 11, and the bottom ruler shows centimeters from 1 to 12. The component has a metal connector on the left, a black component, a white component with two pins, and another black component on the right. Text on the PCB includes 'REV:1.0 9A10' and '3P-010 01A33'.</p>
<p style="text-align: center;">Solder Board-Component View 2</p>	 <p>A photograph showing the reverse side of a green PCB component. It is placed on a blue background with two rulers for scale. The top ruler shows centimeters from 1 to 12, and the bottom ruler shows centimeters from 1 to 13. The component has various solder joints, components, and connectors. Text on the PCB includes 'REV:1.0 9A10' and '3P-010 01A33'.</p>



<p style="text-align: center;">Solder Board-Component View 5</p>	 A photograph of a yellow solder board component, labeled 'TYD-20-SW1' and '2019.02.16', with two circular solder joints. The component is placed on a metal ruler for scale, showing it is approximately 2.5 cm long. The ruler has markings in millimeters and centimeters.
<p style="text-align: center;">Solder Board-Component View 6</p>	 A photograph of a green solder board component with several solder joints and a central component. The component is placed on a metal ruler for scale, showing it is approximately 2.5 cm long. The ruler has markings in millimeters and centimeters.

**Solder
Board-Component View
7**



**Solder
Board-Component View
8**

