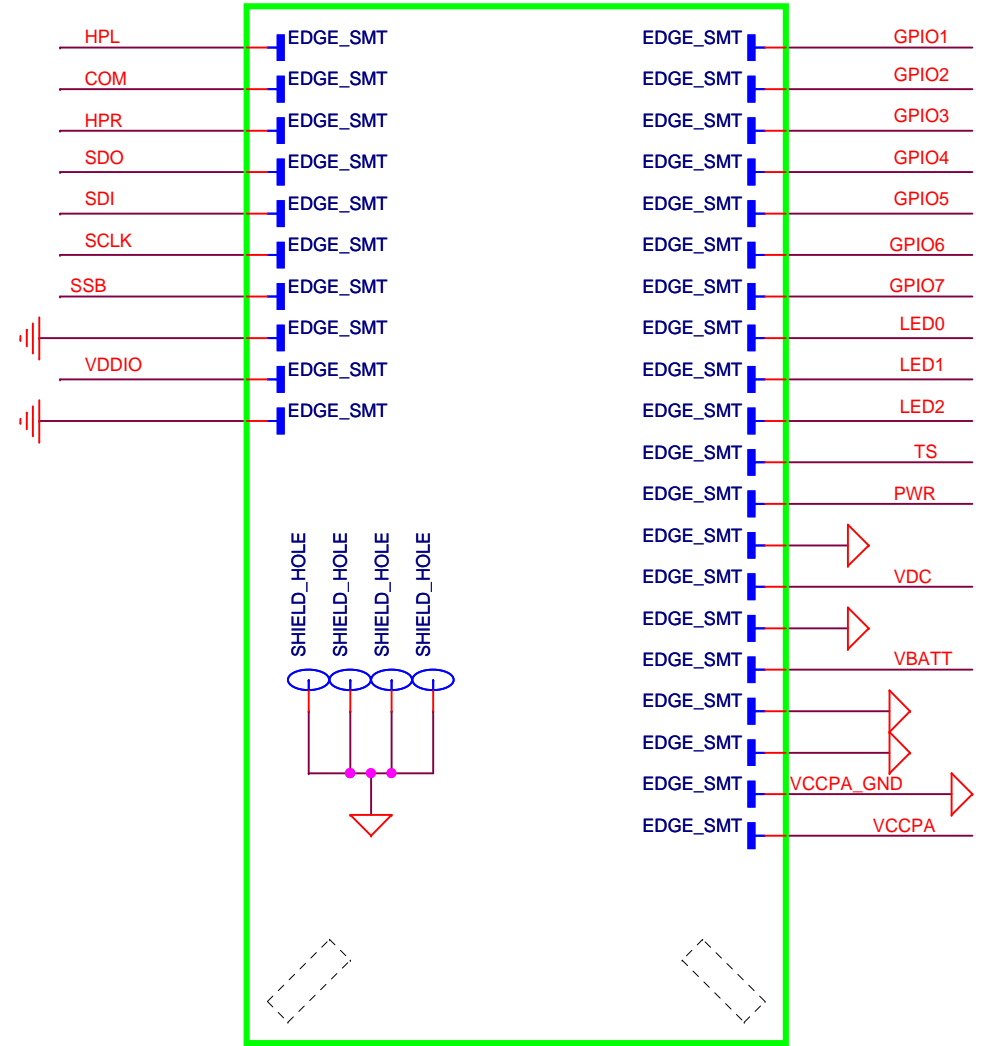
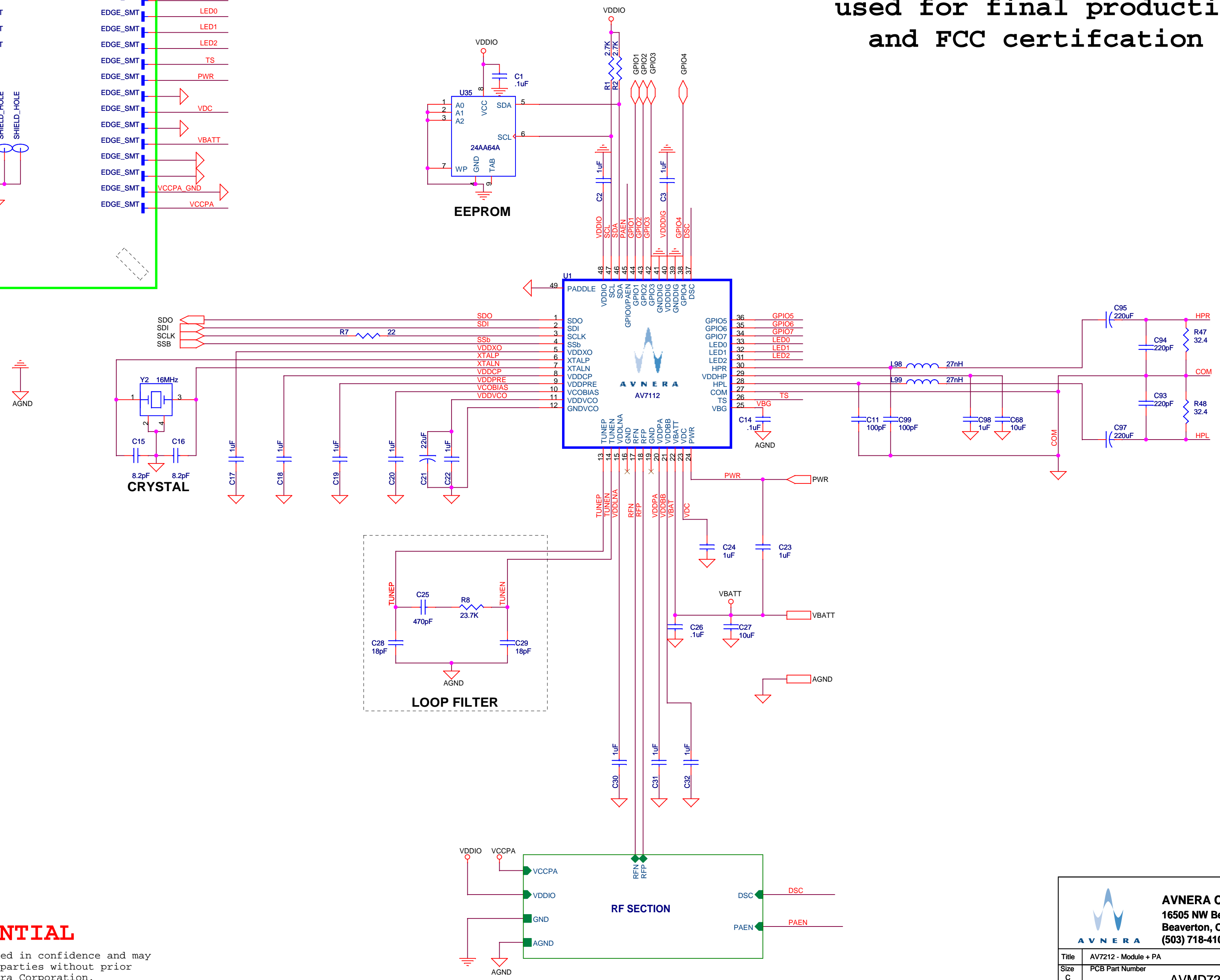


Module Pin Order Diagram



TOP LEVEL

Values shown are those used for final production and FCC certification



CONFIDENTIAL

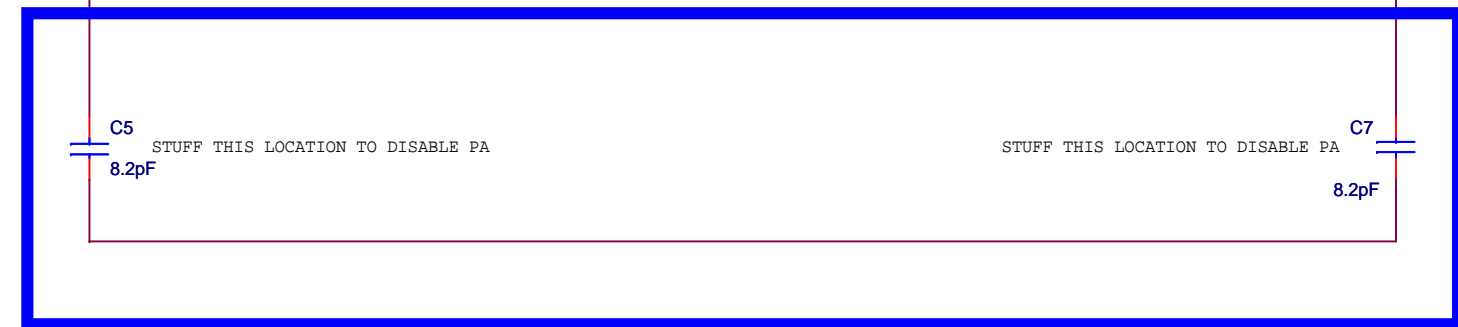
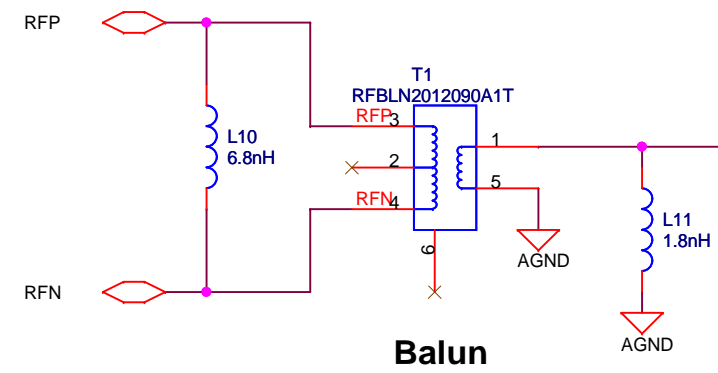
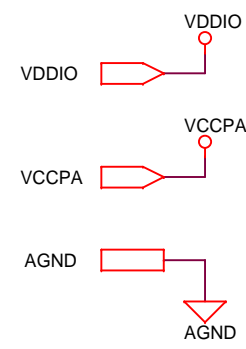
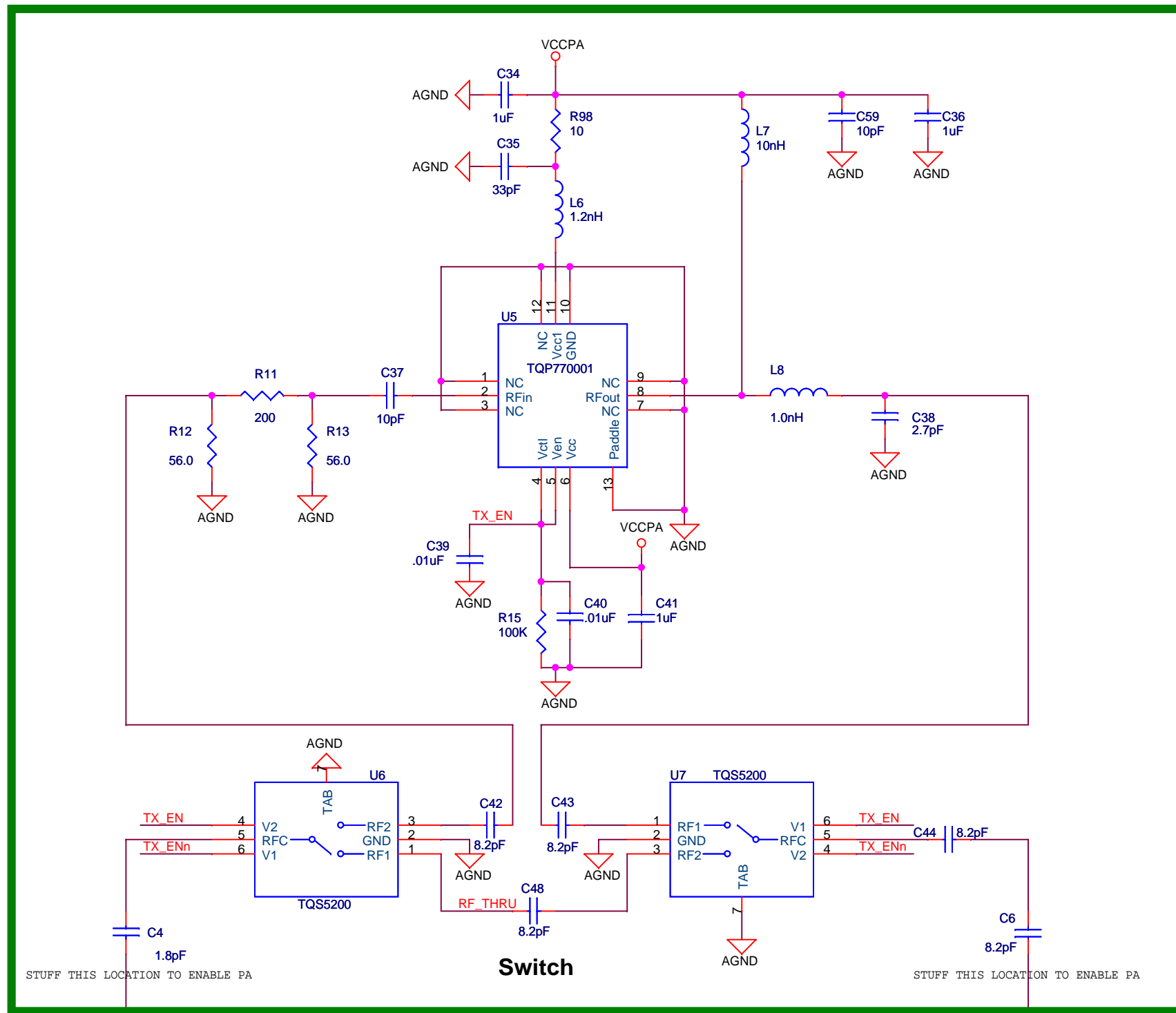
This document is distributed in confidence and may not be disclosed to third parties without prior written permission of Avnera Corporation.

		AVNERA CORPORATION 16505 NW Bethany Ct., Suite 100 Beaverton, OR 97006 (503) 718-4100
Title	AV7212 - Module + PA	
Size	C	
PCB Part Number	AVMD7212-02	
Date:	Monday, March 10, 2008	Sheet 2 of 3
Rev	C	

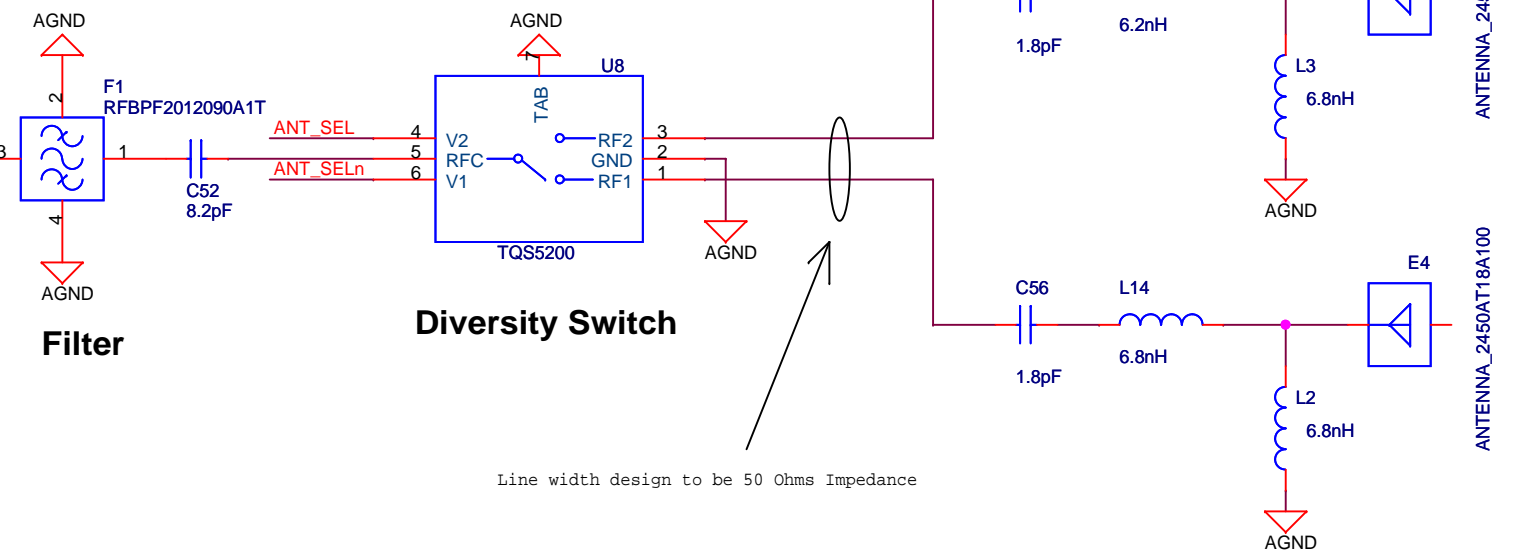
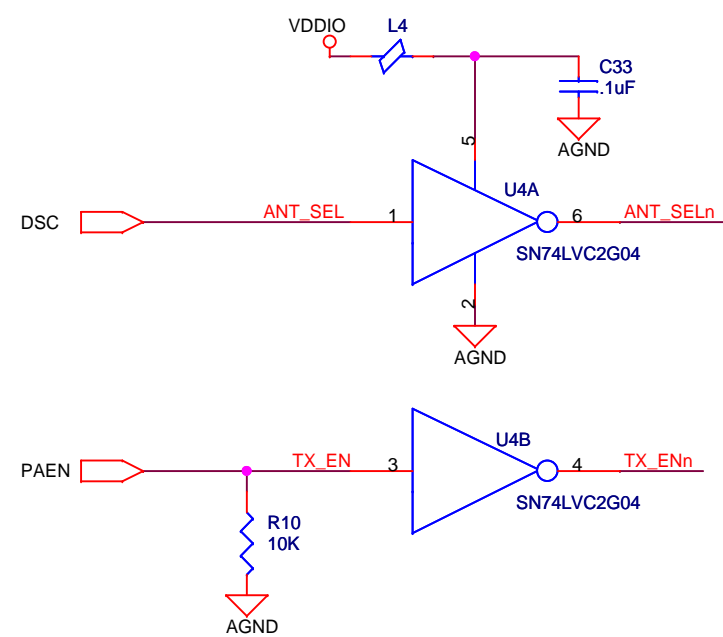
RF SECTION


Values shown are those used for final production and FCC certification

The "With-PA" version of the module is assembled using these components



The "No-PA" version of the module is assembled using these components



 AVNERA CORPORATION 16505 NW Bethany Ct., Suite 100 Beaverton, OR 97006 (503) 718-4100	
Title	AV7212 - Module + PA
Size	PCB Part Number
C	AVMD7212-02
Date:	Monday, March 10, 2008
Sheet	3 of 3
Rev	C