

1/2

REF 95.0 dB $\mu$ V

AT 10 dB

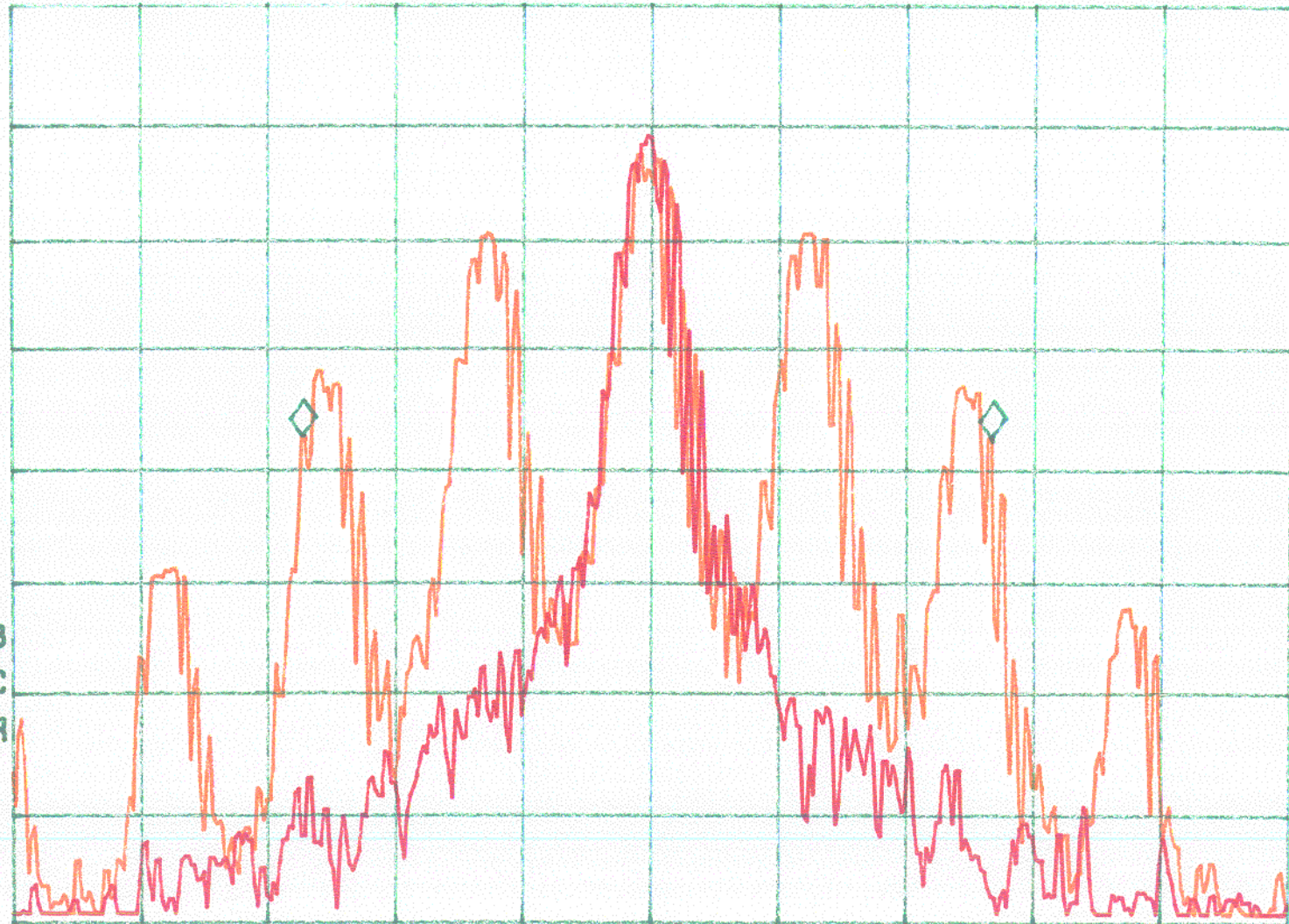
MKR 10.00 KHz

.00 dB

PEAK  
LOG  
10  
dB/

Orange: With modulation  
Red: Without modulation

VA VB  
SC FC  
CORR



CENTER 462.63750 MHz

#RES BW 300 Hz

VBW 300 Hz

SPAN 20.00 kHz

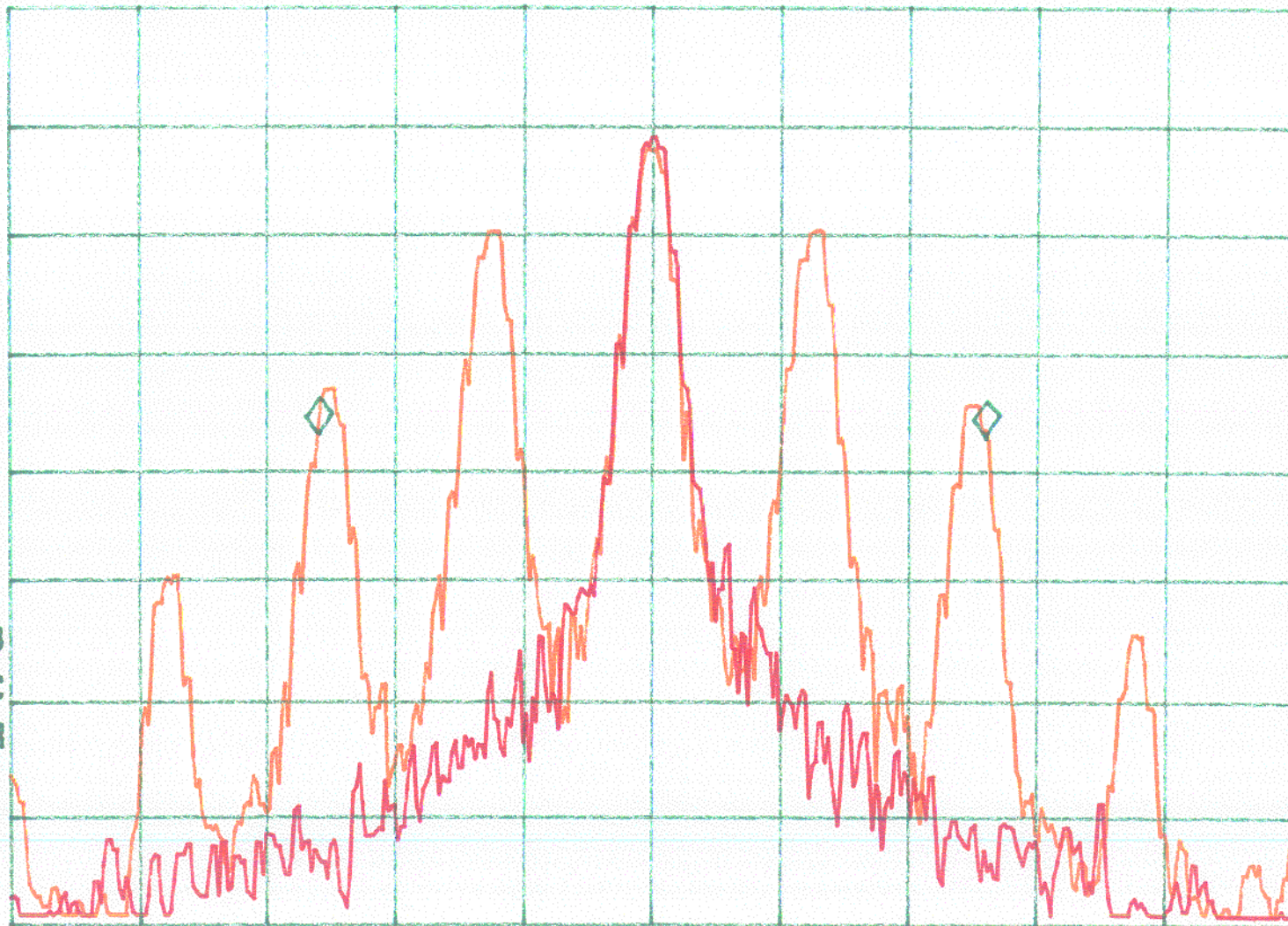
SWP 1.00 sec

hp  
REF 82.0 dB $\mu$ V AT 10 dB MKR 10.40 kHz  
-.01 dB

PEAK  
LOG  
10  
dB/

Orange: With modulation  
Red: Without modulation

VA VB  
SC FC  
CORR



CENTER 467.63750 MHz SPAN 20.00 kHz  
#RES BW 300 Hz VBW 300 Hz SWP 1.00 sec