

h/

MKR 10.50 KHz

REF 117.0 dB μ V

AT 20 dB

.01 dB

PEAK

LOG

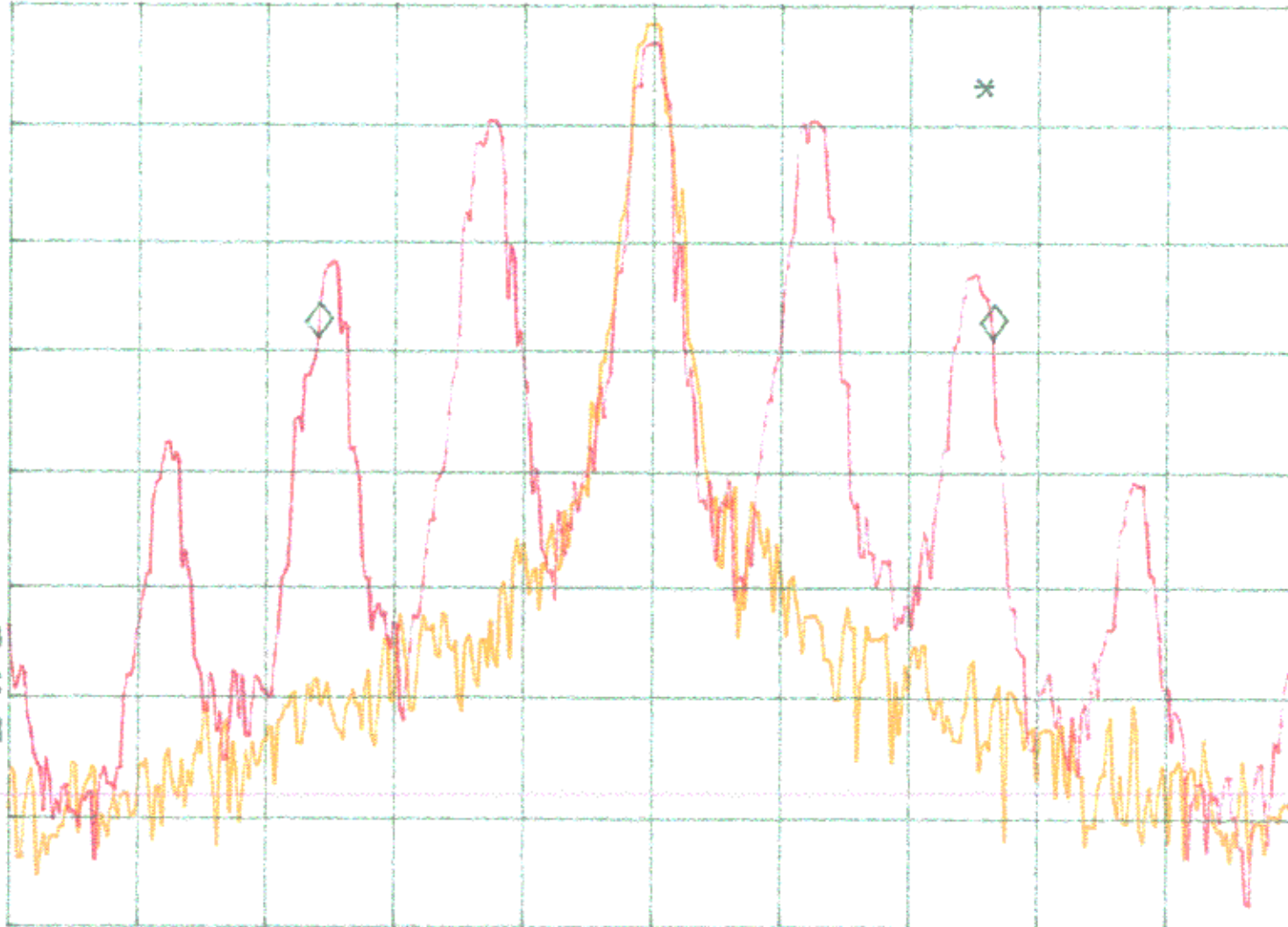
10

dB/

VA VB

SC FC

CORR



CENTER 462.63750 MHz

#RES BW 300 Hz

VBW 300 Hz

SPAN 20.00 KHz

SWP 1.00 sec

hp

REF 117.0 dBμV

AT 20 dB

MKR 10.50 kHz

.02 dB

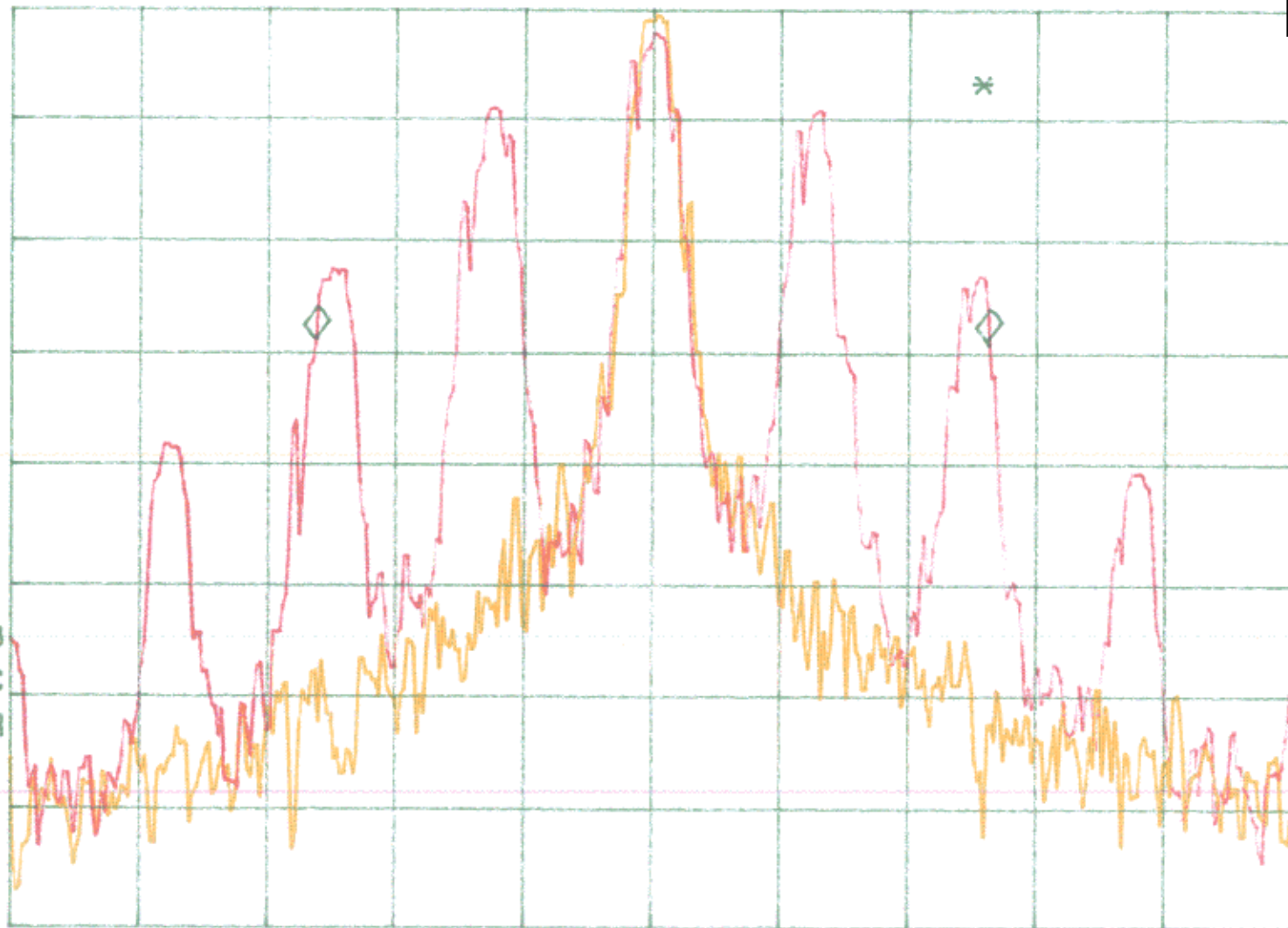
PEAK

LOG

10

dB/

VA VB
SC FC
CORR



CENTER 467.63750 MHz

#RES BW 300 Hz

VBW 300 Hz

SPAN 20.00 kHz

SWP 1.00 sec