

FRONT

FOLD

onn.™

200W CD Stereo

Model: 100008724

PRODUCT GUIDE

June 3, 2020_V2

We'd love to hear from you.
Scan with your Walmart app and
let us know what you think!

June 3, 2020_V2



FOLD

FOLD

CAUTION

**RISK OF ELECTRIC SHOCK
DO NOT OPEN**

CAUTION: TO REDUCE THE RISK OF ELECTRIC SHOCK, DO NOT REMOVE COVER (OR BACK). NO USER-SERVICEABLE PARTS INSIDE. REFER SERVICING TO QUALIFIED SERVICE PERSONNEL.



DANGEROUS VOLTAGE: The lightning flash with arrowhead symbol, within an equilateral triangle is intended to alert the user to the presence of uninsulated dangerous voltage within the product's enclosure that may be of sufficient magnitude to constitute a risk of electric shock to persons.



ATTENTION: The exclamation point within an equilateral triangle is intended to alert the user to the presence of important operating and maintenance (servicing) instructions in the literature accompanying the appliance.



DANGER: This product utilizes a Class 1 laser to read Compact Discs. This laser Compact Disc Player is equipped with safety switches to avoid exposure when the CD door is open and the safety interlocks are defeated. Invisible laser radiation is present when the CD Player's lid is open and the system's interlock has failed or been defeated. It is very important that you avoid direct exposure to the laser beam at all times. Please do not attempt to defeat or bypass the safety switches.

NOTICE: This device complies with Part 15 of the FCC Rules. Operation is subject to the following two conditions: (1) This device may not cause harmful interference, and (2) This device must accept any interference received, including interference that may cause undesired operation.

INFORMATION: This equipment has been tested and found to comply with the limits for a Class B digital device, pursuant to Part 15 of the FCC Rules. These limits are designed to provide reasonable protection against harmful interference in a residential installation. This equipment generates, uses and can radiate radio frequency energy and, if not installed and used in accordance with the instructions, may cause harmful interference to radio communications. However, there is no guarantee that interference will not occur in a particular installation. If this equipment does cause harmful interference to radio or television reception, which can be determined by turning the equipment off and on, the user is encouraged to try to correct the interference by one or more of the following measures:

- Reorient or relocate the receiving antenna.
- Increase the separation between the equipment and receiver.
- Connect the equipment into an outlet on a circuit different from that to which the receiver is connected.
- Consult the dealer or an experienced radio/TV technician for help.

IMPORTANT SAFETY INSTRUCTIONS

1. Read these Instructions.
2. Keep these Instructions.
3. Heed all Warnings.
4. Follow all instructions.
5. Do not use this apparatus near water.
6. Clean only with a dry cloth.
7. Do not block any ventilation openings. Install in accordance with the manufacturer's instructions.
8. Do not install near any heat sources such as radiators, heat registers, stoves, or other apparatus (including amplifiers) that produce heat.
9. Do not defeat the safety purpose of the polarized or grounding - type plug. A polarized plug has two blades with one wider than the other. A grounding type plug has two blades and a third grounding prong. The wide blade or the third prong are provided for your safety. When the provided plug does not fit into your outlet, consult an electrician for replacement of the obsolete outlet.
10. Protect the power cord from being walked on or pinched particularly at plugs, convenience receptacles, and the point where they exit from the apparatus.
11. Only use attachments/accessories specified by the manufacturer.
12. Use only with a cart, stand, tripod, bracket, or table specified by the manufacturer, or sold with the apparatus. When a cart is used, use caution when moving the cart/apparatus combination to avoid injury from tip-over.
13. Unplug this apparatus during lightning storms or when unused for long periods of time.
14. Refer all servicing to qualified service personnel. Servicing is required when the apparatus has been damaged in any way, such as power-supply cord or plug is damaged, liquid has been spilled or objects have fallen into the apparatus, the apparatus has been exposed to rain or moisture, does not operate normally, or has been dropped.



ATTENTION

**RISQUE D'ÉLECTROCUTION
NE PAS OUVRIR**

IMPORTANT SAFETY INSTRUCTIONS (con't.)

15. Power Sources - This product should be connected to a power supply only of the type described in these operating instructions, or as marked on the unit.
16. Water and Moisture - This product should be kept away from direct contact with liquids. The apparatus shall not be exposed to dripping or splashing and objects filled with liquids, such as vases, shall not be placed on the apparatus.
17. CAUTION - Danger of explosion if battery is incorrectly replaced. Replace only with the same or equivalent type. Batteries (a battery pack or an installed battery) shall not be exposed to excessive heat such as sunshine, fire, etc.
18. Where the mains plug or an appliance coupler is used as the disconnect device, the disconnect device shall remain readily operable.
19. Do not install this equipment in a confined or "boxed-in" space such as a bookcase or similar unit, and maintain good ventilation conditions. The ventilation should not be impeded by covering the ventilation openings with items such as newspaper, tablecloths, curtains, etc.
20. This apparatus is for professional use only.
21. When moving or not using the appliance, secure the power cord (e.g., wrap it with a cable tie). Be careful not to damage the power cord. Before using it again, make sure the power cord has not been damaged. If the power cord has been damaged at all, bring the unit and cord to a qualified service technician for repair or replacement as specified by the manufacturer.
22. WARNING: Please refer to any important information (e.g., electrical, safety, etc.) printed on the exterior bottom enclosure or rear panel before installing or operating the product.

WARNING - Do not ingest the battery, Chemical Burn Hazard

The remote control supplied with this product contains a coin/button cell battery. If the coin/button cell battery is swallowed, it can cause severe internal burns in just 2 hours and can lead to death. Keep new and used batteries away from children. If the battery compartment does not close securely, stop using the product and keep it away from children. If you think batteries might have been swallowed or placed inside any part of the body, seek immediate medical attention.

WARNINGS AND PRECAUTIONS

- **CAUTION:** To prevent electric shock, match wide blade of plug to wide slot, fully insert.
- **WARNING:** To reduce the risk of fire or electric shock, do not expose this apparatus to rain or moisture.
- **CAUTION:** Use of any controls or adjustments or performance of procedures other than those herein specified may result in hazardous radiation exposure.
- **WARNING:** Changes or modifications to this unit not expressly approved by the party responsible for compliance could void the users authority to operate the equipment.
- **WARNING:** Do not place the unit on top of any soft, porous, or sensitive surfaces to avoid damaging the surface. Use a protective barrier between the unit and surface to protect the surface.
- **WARNING:** Use of this unit near fluorescent lighting may cause interference regarding use of the remote. If the unit is displaying erratic behavior move away from any fluorescent lighting, as it may be the cause.
- **CAUTION:** Danger of explosion if battery is incorrectly replaced. Replace only with same or equivalent type.
- **WARNING:** The remote control button cell battery contains mercury. Do not put in trash, instead recycle or dispose of as hazardous waste.
- **WARNING:** Lithium batteries, like all rechargeable batteries are recyclable and should be recycled or disposed of in normal household waste. Contact your local government for disposal or recycling practices in your area. They should never be incinerated since they might explode.
- Do not expose the apparatus to dripping or splashing. Do not place objects filled with liquids (e.g., vases) on top of the apparatus.
- The AC power plug is used as disconnect device and it should remain readily operable during intended use. In order to disconnect the apparatus from the mains completely, the AC power plug should be disconnected from the mains socket outlet completely.
- Battery should not be exposed to excessive heat such as sunshine, fire or the like.
- Caution marking is located on the back of the apparatus.
- **NOTE:** Do not unplug the speaker cable during playing or you may need to reset the unit. If you need to unplug the speaker cable, please make sure the unit is in standby mode.

This equipment complies with FCC radiation exposure limits set forth for an uncontrolled environment. This equipment should be installed and operated with minimum distance 20cm between the radiator and your body.

FOLD

FOLD

SYSTEM CONNECTIONS

Connect the speakers to the R terminal and the L terminal at the rear of main unit.

NOTE: Connecting the speakers other than the speakers supplied with the unit may damage the unit.

CAUTIONS:

- Ensure that the power supply in your house complies with that indicated on the identification sticker located on the back of your unit (AC120V-60Hz).
- If you are not going to use the unit for a long time, disconnect the AC power plug from the wall outlet.
- This unit is designed for continuous use. Switching off the unit to standby mode does not disconnect it from the power supply. To completely isolate the equipment, remove the plug from the wall outlet as some components remain connected to the electrical supply.
- To prevent electrical shock, match wide blade of plug to wide slot of wall outlet, then fully insert.

CLOCK SETTINGS

During standby mode, press and hold PROG/MEM on the remote control until the hour digits blink on the display. Press TUNE - or TUNE + button to adjust the desired hour and press PROG/MEM to confirm, then the minute digits blink. Press TUNE - or TUNE + button to adjust the desired minutes and press the PROG/MEM button once to confirm.

FM RADIO OPERATION

- Step 1** Press the POWER button to turn on the unit.
- Step 2** Press the SOURCE button to switch to TUNER mode.
- Step 3** Press the TUNE - or TUNE + button to adjust the radio frequency.
- Step 4** To search for a station automatically, press and hold TUNE - or TUNE + button until the tuner starts searching, then release. After tuning in a station, the search stops.

Saving Preset Stations

- Step 1** Tune the radio to the station you want to save.
- Step 2** Press the PROG/MEM button on the remote control, P01 will blink on the display, then press the TUNE - or TUNE + button to select a preset number.
- Step 3** Press the PROG/MEM button again to save the current station to the selected memory slot.
- Step 4** Repeat steps 1, 2 and 3 to program additional stations.
- Step 5** To tune in to a preset station, press the MEM.UP button on the remote control to select preset number.

Notes: You can program up to 20 FM presets.

Fully unwind the wire antenna. Then extend the wire antenna and place it in the position that sounds best. When reception is good, the (📶) icon will appear on the display.

BLUETOOTH WIRELESS

You can stream audio to this product from up to 33' away using your iPod, iPhone, iPad, Android or other Bluetooth enabled device.

- Step 1** Turn on the unit by pressing the POWER button.
- Step 2** Press the SOURCE button to set the unit to BT mode, (📶) icon is shown and flashes on the display.
- Step 3** Turn on your Bluetooth enabled device and enable Bluetooth, select "onn. 100 Stereo" from the available list and your Bluetooth audio device will connect to the CD Stereo.
- Step 4** If you want to pair the CD Stereo with another Bluetooth audio device, press and hold the PAIR/CLOCK button to disconnect the current paired Bluetooth audio device or make sure the current device has been moved out of range.
- Step 5** During playback, press the PLAY/PAUSE button to pause playback and again to resume playback.

Notes: If the last paired bluetooth audio device is powered on and within available range with Bluetooth enabled, the device will automatically reconnect to the CD Stereo.

If the unit fails to pair or cannot connect to your Bluetooth device, try to refresh the Bluetooth memory by pressing and holding the "PAIR/CLOCK" button on the unit for about 3 seconds, then connect your Bluetooth device to the unit again.

CD OPERATION

Playing a CD

- Step 1** Press the POWER button to turn on the unit.
 - Step 2** Press the OPEN/CLOSE button to open the CD DOOR.
 - Step 3** Place a disc in the center with the label side up and then press the OPEN/CLOSE button to close the CD door.
 - Step 4** Press the SOURCE button to select CD mode, the loaded CD will begin to play automatically.
- **To repeat playback**, press the MEM.UP button on the remote control until (REP) blinks on the display. The current track will be played repeatedly. Press the MEM.UP button until (REP) stops blinking and remains on, all tracks will be played repeatedly.
 - **To cancel repeat playback mode**, press the MEM.UP button until (REP) disappears on the display.

Programming a CD

- Step 1** Follow the steps for "Playing a CD", then press the STOP button.
- Step 2** Press the PROG/MEM button on the remote control, "MEM" and "P01" will blink on the display, indicating that the unit is in program mode, and it is ready for the first track to be selected.
- Step 3** Press the TUNE - or TUNE + button to select the track you desire.
- Step 4** Press the PROG/MEM button to store the track in memory, "P02" will blink on the display.
- Step 5** Repeat steps 3 and 4 until the desired CD tracks are programmed. You can program up to 20 tracks.
- Step 6** Press the PLAY/PAUSE button to begin playback of the programmed tracks.

TIMER SETTING

The timer function will turn on the unit at a preset time.

- Step 1** In standby mode, press and hold the TIMER button on the remote control until the display blinks.
 - Step 2** Press the PROG/MEM button until the hour digits blink.
 - Step 3** Press the TUNE - or TUNE + button to adjust the desired hours, then press the PROG/MEM button once to confirm. The minute digits will begin to blink.
 - Step 4** Press the TUNE - or TUNE + button to adjust the desired minutes, then press the PROG/MEM button once to confirm.
 - Step 5** Press the SOURCE button to select the timer mode (RADIO or CD), then press the PROG/MEM button once to confirm. The (TUNER) or (CD) icon will be shown on the display. For RADIO timer, tune in to a desired station. For CD timer, insert a CD into the unit.
 - Step 6** Press the VOL +/- buttons to adjust the volume levels.
 - Step 7** Press the PROG/MEM button to confirm.
 - Step 8** The unit will wake up to "RADIO" or "CD" when the timer reaches the preset time.
- **To Cancel timer**, press and hold the TIMER button on the remote control until the (TUNER) or (CD) icon goes out.

PRESET EQ

This system has four different equalizer settings. During playback, press EQ button on the unit or PRESET EQ button on the remote control repeatedly to select a desired setting as shown below:

OFF -> r oc (ROCK) -> P OP -> C L R (CLASSIC)

SLEEP TIMER SETTING

The sleep timer automatically turns the units off at a certain time.

- Step 1** While the unit is on, press the SLEEP button on the remote control, "90" appears on the display.
- Step 2** Press the SLEEP button repeatedly to select the desired sleep time as follows:
90 -> 80 -> 70 -> 60 -> 50 -> 40 -> 30 -> 20 -> 10 -> OFF
- Step 3** After setting a desired sleep time, "SLEEP" appears on the display.
- Step 4** The unit will automatically turn off once it reaches the sleep time.

Note: To clear the preset sleep time, press the SLEEP button on the remote control to select "OFF" and the "SLEEP" disappears on the display.

USB DEVICE CHARGING

Your unit includes a USB charging port (DC 5V, 1A) for charging most devices, including iPhone, iPod, Android devices and other compatible USB devices.

LINE IN CONNECTION

- Step 1** Connect an audio device such as smartphones, tablets or MP3 player to the Line-In jack using a Line-In cable (not included).
- Step 2** Press the SOURCE button to switch to AUX mode.
- Step 3** The audio device will play through the speakers.

AMBIENT LIGHTING EFFECTS

You can adjust the multi-color lighting effect of the speakers. Press the (🌟) button on the unit or press and hold (🌟) button on the remote control repeatedly to select the desired mode as follows:

L01 (Multi-color) -> L02 (Red) -> L03 (Green) -> L04 (Blue) -> OFF

The unit will remember the last multi-color lighting effect setting when powered off and return to it the next time the unit is powered on.

SPECIFICATIONS

GENERAL

AC Input 120V/60Hz
Power Source (Remote Control) DC 3V, CR2025, Lithium Battery
Speaker (Tweeter) 6 ohm x 2
Speaker (Full Range) 6 ohm x 2
Output Power (Peak) 100W+100W (per channel at 6 ohm, 1kHz)
Dimensions (Main Unit) 6.7in x 8.4in x 10.6in (17cm x 21.3cm x 27cm)
Dimensions (Speaker) 8.7in x 7.7in x 10.6in (22cm x 19.5cm x 27cm) x 2

RADIO SECTION

Frequency Range ... FM: 87.5 - 108MHz

BLUETOOTH SECTION

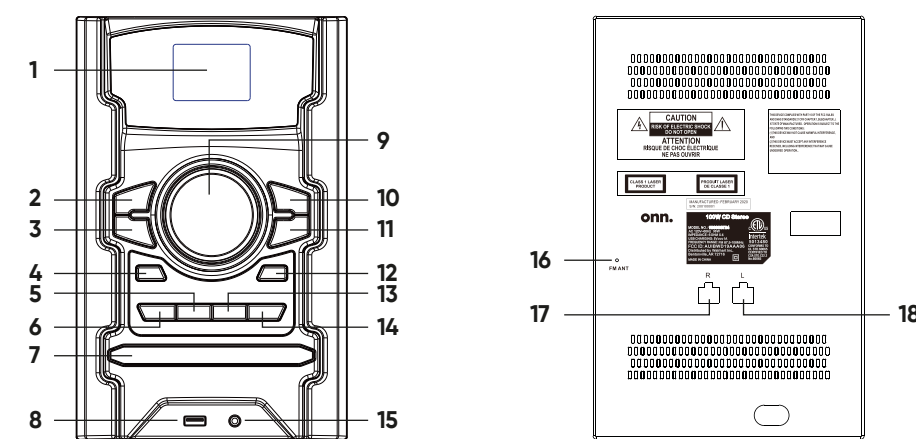
Bluetooth specification 5.0
Supported Protocol A2DPV1.3
Range 33 feet (10m) line of sight

Specifications are subject to change and improvement without notice.
Actual product may vary from the images found in this document.

FOLD

FOLD

MAIN UNIT

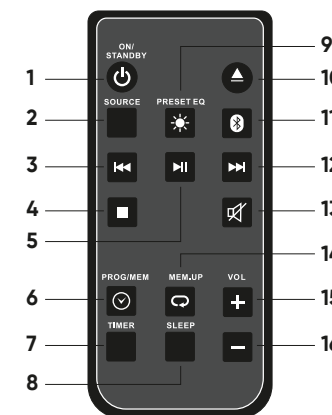


Speaker Cable (each 1 piece on Left and Right Speaker Box): 70cm length, 6-PIN connector type

- | | | |
|---------------------------|----------------------------|---------------------|
| 1. LED Display | 8. USB CHARGING Port | 15. LINE-IN Jack |
| 2. PLAY/PAUSE Button | 9. VOLUME + / - | 16. FM Antenna |
| 3. TUNE - / SKIP - Button | 10. STOP Button | 17. SPEAKER OUT (R) |
| 4. POWER Button | 11. TUNE + / SKIP + Button | 18. SPEAKER OUT (L) |
| 5. EQ Button | 12. SOURCE Button | |
| 6. PAIR/CLOCK Button | 13. LIGHT Button | |
| 7. CD Door | 14. OPEN/CLOSE Button | |

REMOTE CONTROL

- | | |
|---------------------------|----------------------------|
| 1. ON/STANDBY Button | 9. LIGHT/PRESET EQ Button |
| 2. SOURCE Button | 10. OPEN/CLOSE Button |
| 3. TUNE - / SKIP - Button | 11. BLUETOOTH PAIR Button |
| 4. STOP Button | 12. TUNE + / SKIP + Button |
| 5. PLAY/PAUSE Button | 13. MUTE Button |
| 6. PROG/MEM Button | 14. MEM.UP Button |
| 7. TIMER Button | 15. VOLUME + Button |
| 8. SLEEP Button | 16. VOLUME - Button |



BATTERY REPLACEMENT

When the battery becomes weak, the operating distance of the remote control is greatly reduced and you will need to replace the battery.

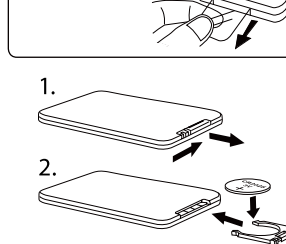
Note: If the remote control is not going to be used for a long time, remove the battery to avoid damage caused by battery leakage corrosion.

Warning: Do not dispose of the battery in fire; battery may explode or leak. Batteries should not be exposed to excessive heat such as sunshine, fire or the like.

Caution: Danger of explosion if battery is incorrectly replaced. Replace only with the same or equivalent type.

Walmart Inc. 702 SW 8th Street Bentonville, AR 72716
For customer service, please call: 844-250-5846

Remove the plastic tab before operating your remote control.



FOLD