



Internal Photos

FCC Part 22,24 / RSS 132,133

FOR:

MULTIMODEM®EDGE

MODEL #: MTCBA-E & MTCBA-E-U

**MULTI-TECH SYSTEMS, INC.
2205 WOODALE DRIVE
MOUNDS VIEW, MN 55112
U.S.A**

**FCC ID: AU792U05E06800
IC ID: 125A-0011**

**REFERENCE REPORT #: EMC_918_2005_FCC22/24_CBA
DATE: JULY 20, 2005**



TTI-P-G 081/94-A0
Accredited according to **ISO/IEC 17025**



**Bluetooth Qualification
Test Facility
(BQTF)**



Authorized Testing Laboratory

FCC listed # 101450
IC recognized # 3925

CETECOM Inc.

411 Dixon Landing Road • Milpitas, CA 95035 • U.S.A.

Phone: + 1 (408) 586 6200 • Fax: + 1 (408) 586 6299 • E-mail: info@cetecomusa.com • <http://www.cetecom.com>

CETECOM Inc. is a Delaware Corporation with Corporation number: 2113686

Board of Directors: Dr. Harald Ansorge, Dr. Klaus Matkey, Hans Peter May

© Copyright by CETECOM

Table of Contents

1	ASSESSMENT	3
2	INTERNAL PHOTOS	4
2.1	MTCBA-E.....	4
2.2	MTCBA-E-U.....	6

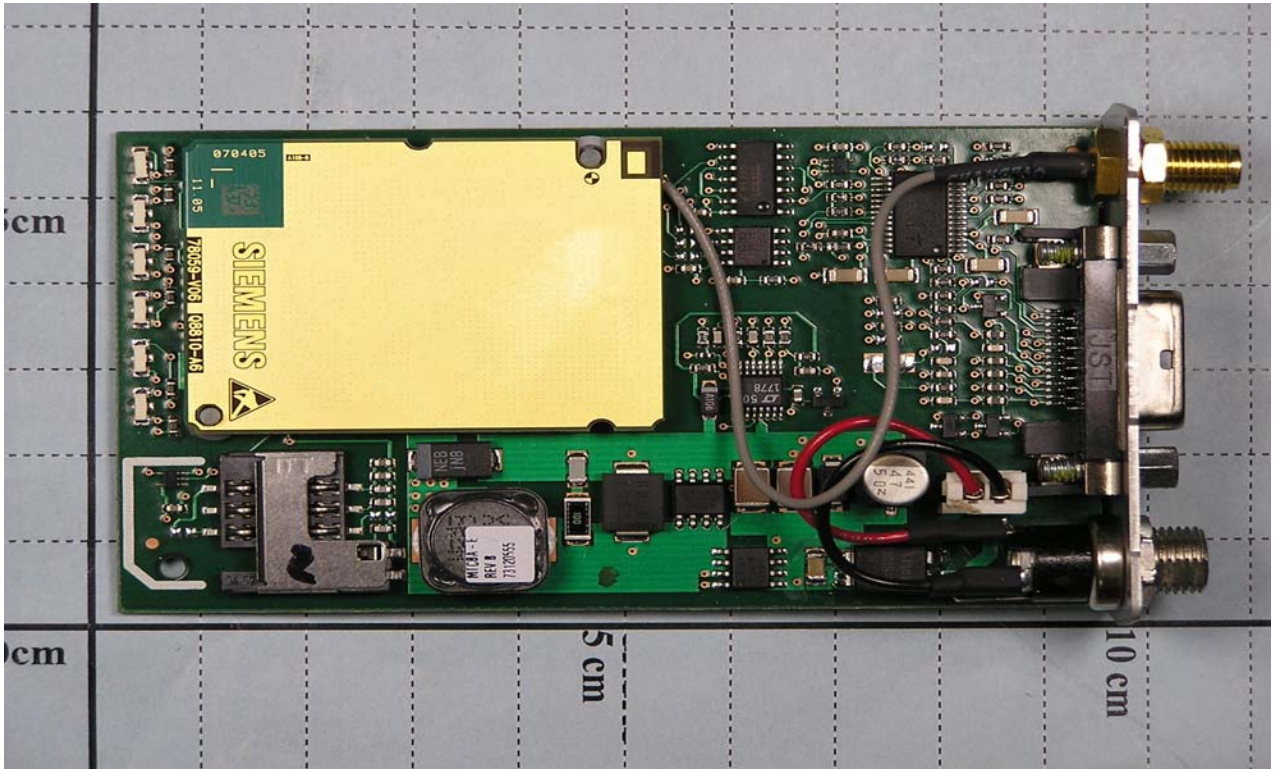
1 Assessment

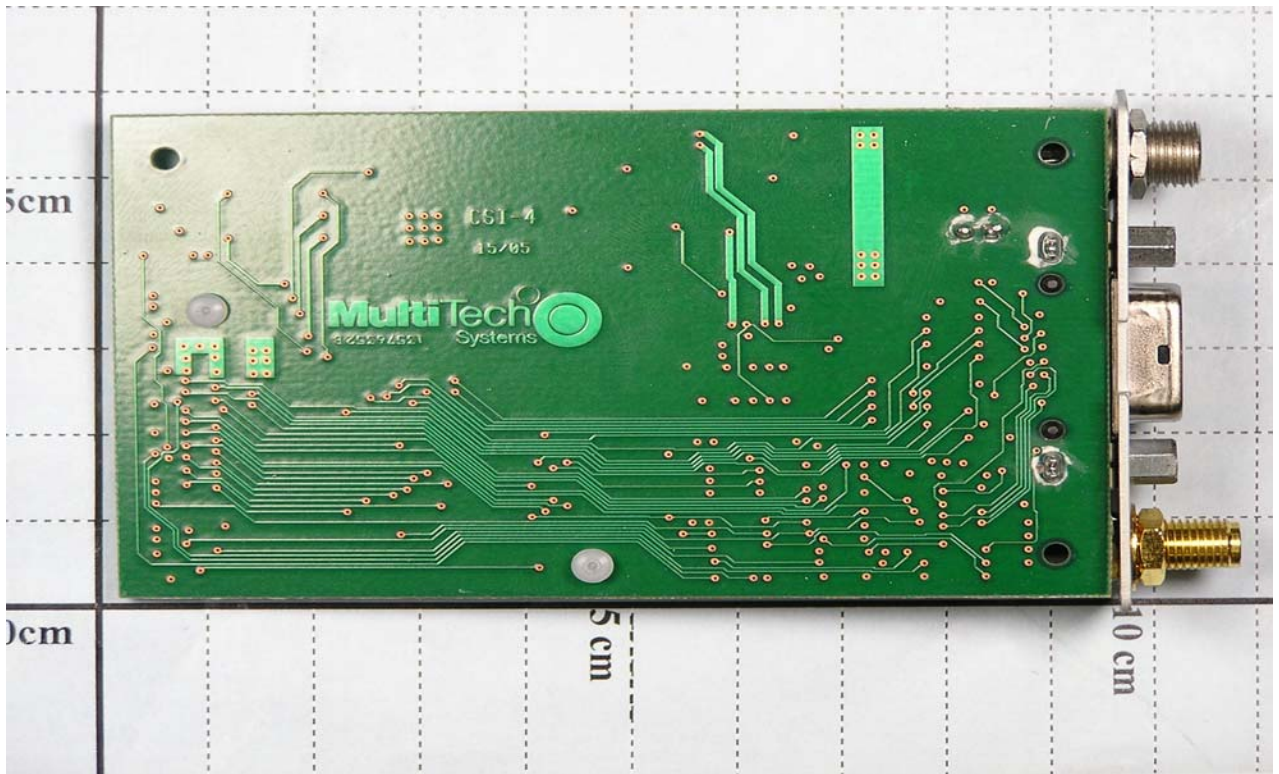
The following is in compliance with the applicable criteria specified in FCC rules Parts 2, 22 and 24 of Title 47 of the Code of Federal Regulations and in compliance with the applicable criteria specified in Industry Canada rules RSS132 and RSS133.

Company	Description	Model #
Multi-tech Systems, Inc.	MultiModem®Edge	MTCBA-E
Multi-tech Systems, Inc.	MultiModem®Edge	MTCBA-E-U

2 INTERNAL PHOTOS

2.1 MTCBA-E





2.2 MTCBA-E-U

