

APPENDIX 1 : Photographs of test setup

UL Apex Co., Ltd.

Head Office EMC Lab.

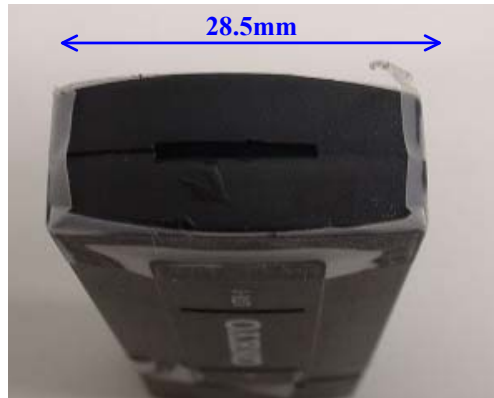
4383-326 Asama-cho, Ise-shi, Mie-ken 516-0021 JAPAN

Telephone: +81 596 24 8116

Facsimile: +81 596 24 8124

1. Photograph of EUT

Top



Right side



Front



Left side



Back



2. Antenna Location

Front



UL Apex Co., Ltd.

Head Office EMC Lab.

4383-326 Asama-cho, Ise-shi, Mie-ken 516-0021 JAPAN

Telephone: +81 596 24 8116

Facsimile: +81 596 24 8124

3. Host device (PC type #1)

The detail of laptop PC that we used for SAR testing is showing in the following.
The distance from the bottom of this laptop PC to EUT is 3mm.

Type of Equipment	Laptop PC
Manufacture	SOTEC
Model No.	WinBook WL2120
Serial No.	SY2450003510
Size	(W×D×H):269×248×35mm
System	Microsoft Windows XP Home Edition Version 2002 Service pack 1
Computer	Mobile Intel(R)Celeron(TM) CPU 1.2GHz, 256MB RAM
USB Port	Horizontal
Test surface of EUT	Back
Distance from the bottom of this laptop PC to EUT	3mm



UL Apex Co., Ltd.

Head Office EMC Lab.

4383-326 Asama-cho, Ise-shi, Mie-ken 516-0021 JAPAN

Telephone: +81 596 24 8116

Facsimile: +81 596 24 8124

4. Host device (PC type #2)

The detail of laptop PC that we used for SAR testing is showing in the following.
The distance from the bottom of this laptop PC to EUT is 9mm.

Type of Equipment	Laptop PC
Manufacture	Sharp
Model No.	PC-CB1-CB
Serial No.	2N03147X
Size	(W×D×H): 281×246×47
System	Microsoft Windows 2000 5.00.2195 Service pack 3
Computer	Intel(R)Perntium (R)III Mobile CPU 1000MHz 523,248 KB RAM
USB Port	Horizontal
Test surface of EUT	Front
Distance from the bottom of this laptop PC to bottom of USB port	9mm



UL Apex Co., Ltd.

Head Office EMC Lab.

4383-326 Asama-cho, Ise-shi, Mie-ken 516-0021 JAPAN

Telephone: +81 596 24 8116

Facsimile: +81 596 24 8124

5. Host device (PC type #3)

The detail of laptop PC that we used for SAR testing is showing in the following.
The distance from the bottom of this laptop PC to EUT is 0mm.

Type of Equipment	Laptop PC
Manufacture	Dell
Model No.	INSPIRON 4000
Serial No.	16007069728
Display	(W×D×H): 319×253×45mm
System	Microsoft Windows XP Professional Version2002 Service pack 2
Computer	Intel(R)Celeron(TM) processor 600MHz 256MB RAM
USB Port	Vertical
Test surface of EUT	Left Side
Distance from the bottom of this laptop PC to bottom of card slot	0mm



UL Apex Co., Ltd.

Head Office EMC Lab.

4383-326 Asama-cho, Ise-shi, Mie-ken 516-0021 JAPAN

Telephone: +81 596 24 8116

Facsimile: +81 596 24 8124

6. Host device (PC type #4)

The detail of laptop PC that we used for SAR testing is showing in the following.
The distance from the bottom of this laptop PC to EUT is 0mm.

Type of Equipment	Laptop PC
Manufacture	IBM Corporation
Model No.	T23
Serial No.	97ALT8N
Size	(W×D×H): 281×246×47
System	Microsoft Windows 2000 5.00.2195 Service pack 3
Computer	Intel(R)Perntium (R)III Mobile CPU 1000MHz 523,248 KB RAM
USB Port	Vertical
Test surface of EUT	Right side
Distance from the bottom of this laptop PC to bottom of USB port	0mm



UL Apex Co., Ltd.

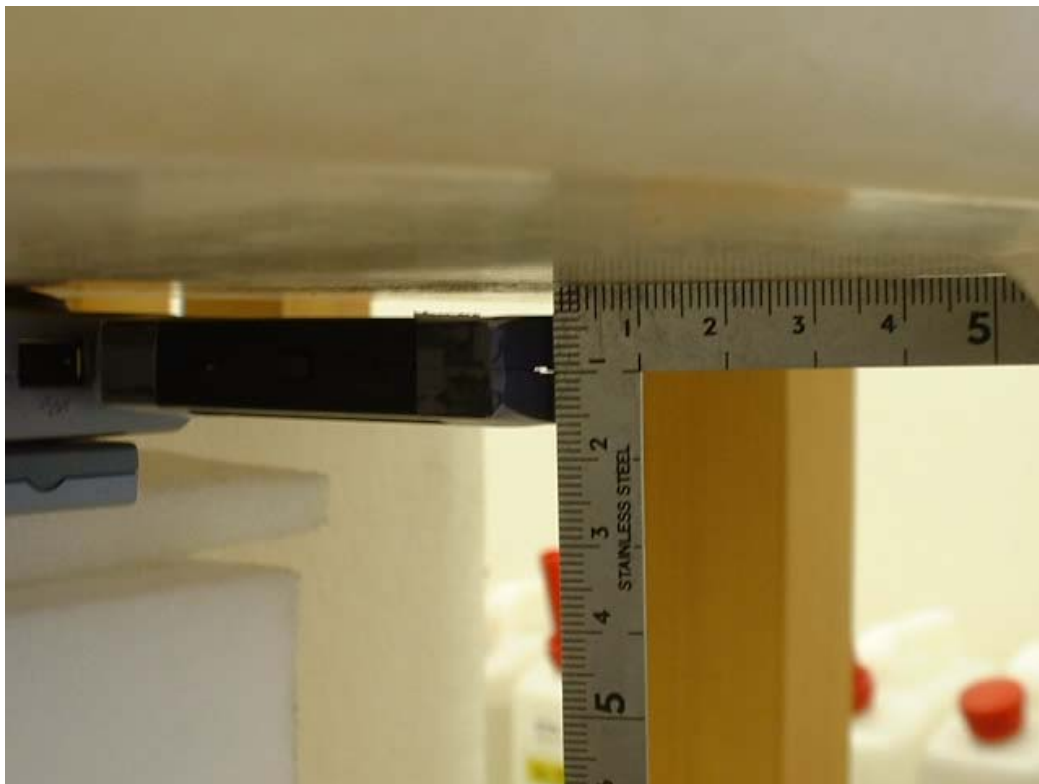
Head Office EMC Lab.

4383-326 Asama-cho, Ise-shi, Mie-ken 516-0021 JAPAN

Telephone: +81 596 24 8116

Facsimile: +81 596 24 8124

(1) PC type #1 (EUT Back/ 3mm)



UL Apex Co., Ltd.

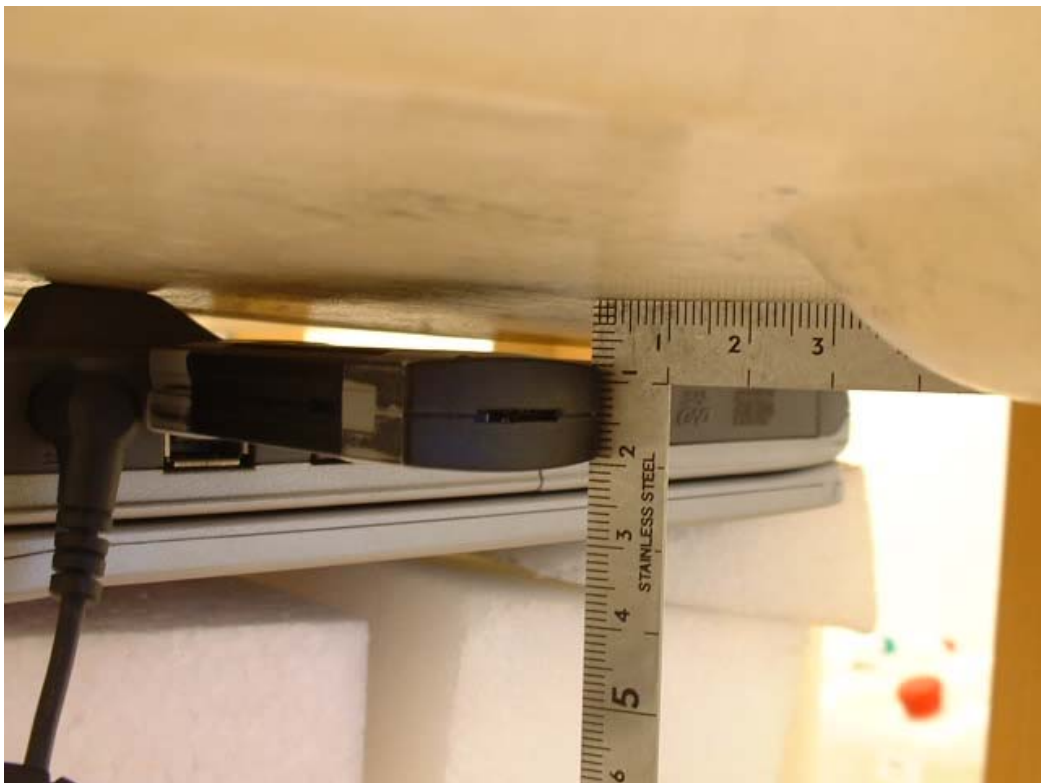
Head Office EMC Lab.

4383-326 Asama-cho, Ise-shi, Mie-ken 516-0021 JAPAN

Telephone: +81 596 24 8116

Facsimile: +81 596 24 8124

(2) PC type #2 (EUT Front/ 9mm)



(3) PC type #3 (EUT Left Side/ 0mm)



(4) PC type #4 (EUT Right Side/ 0mm)



(5) #1 Side(Top 15mm)

