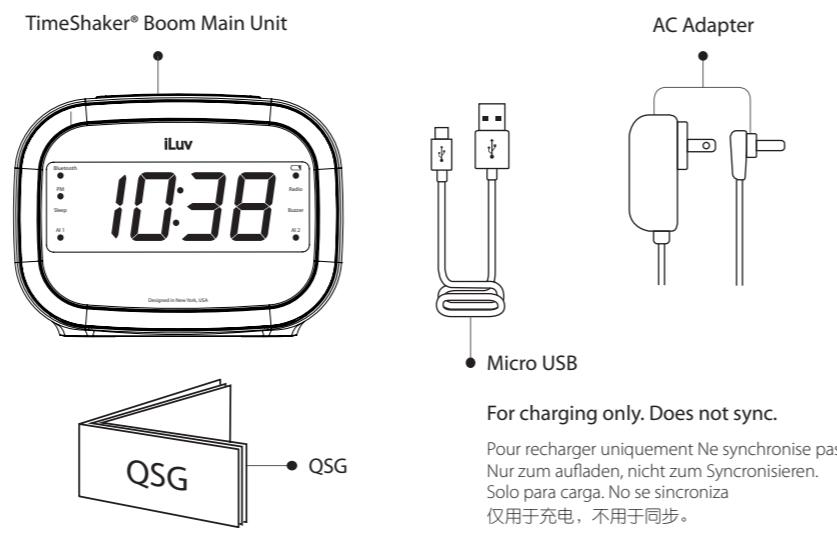


Jumbo Display Alarm Clock Speaker
WO289BT

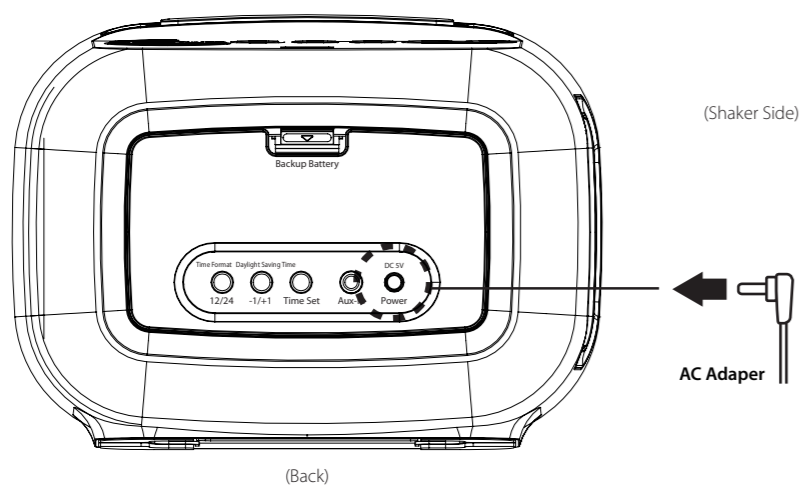
Quick Start Guide
Guide de démarrage rapide

WHAT'S INCLUDED

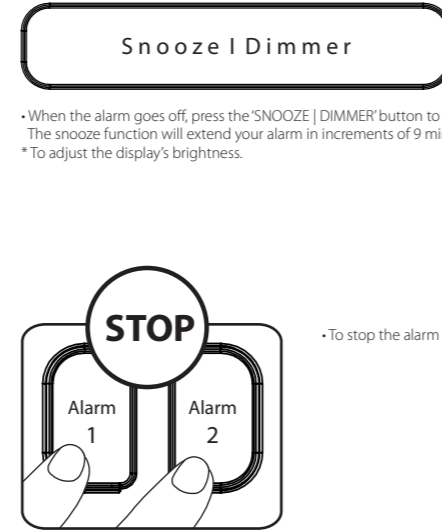


For charging only. Does not sync.
Pour recharger uniquement. Ne synchronise pas.
Nur zum Aufladen, nicht zum Synchronisieren.
Solo para carga. No se sincroniza.
仅用于充电，不用于同步。

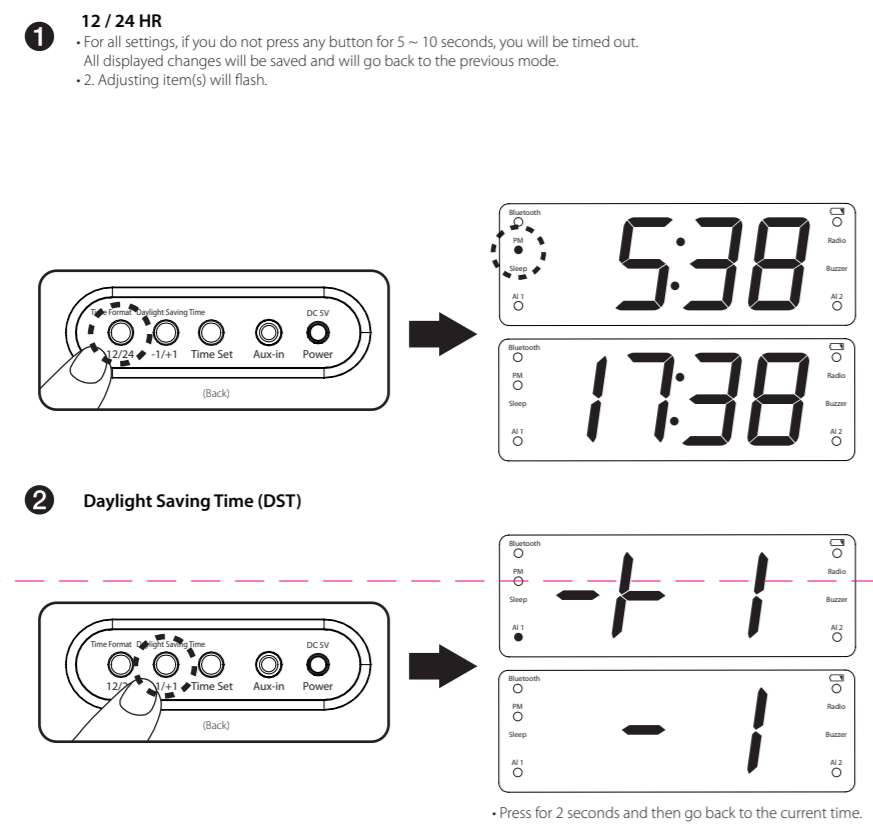
1. TO POWER ON / R/BLAGES / UM HIN EINZUSTELLEN / PARA ENCENDER



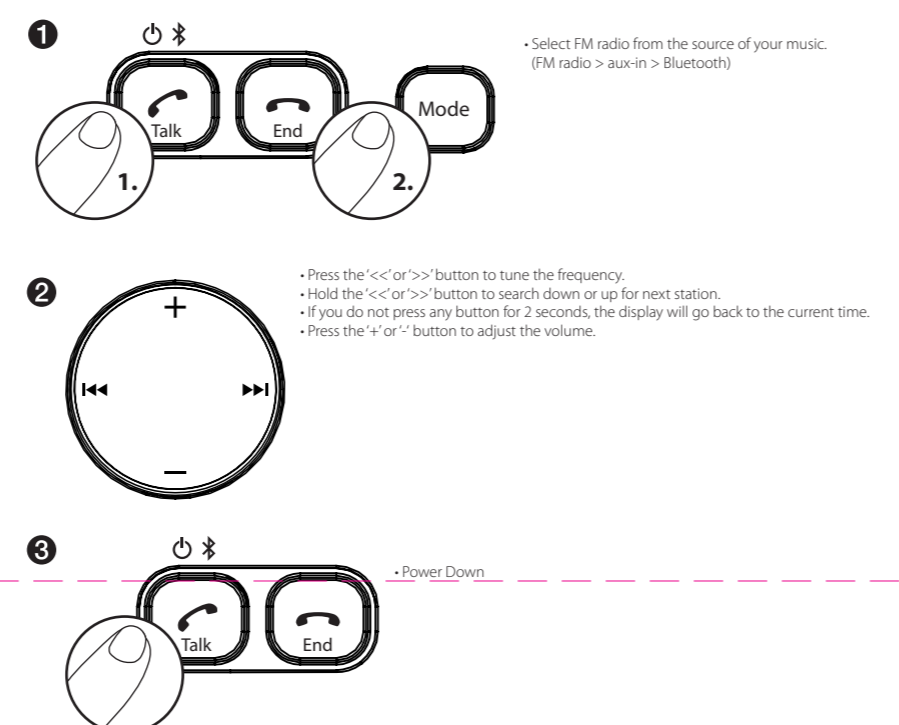
4. SETTING THE ALARM / RÉGLAGE DE L'HEURE



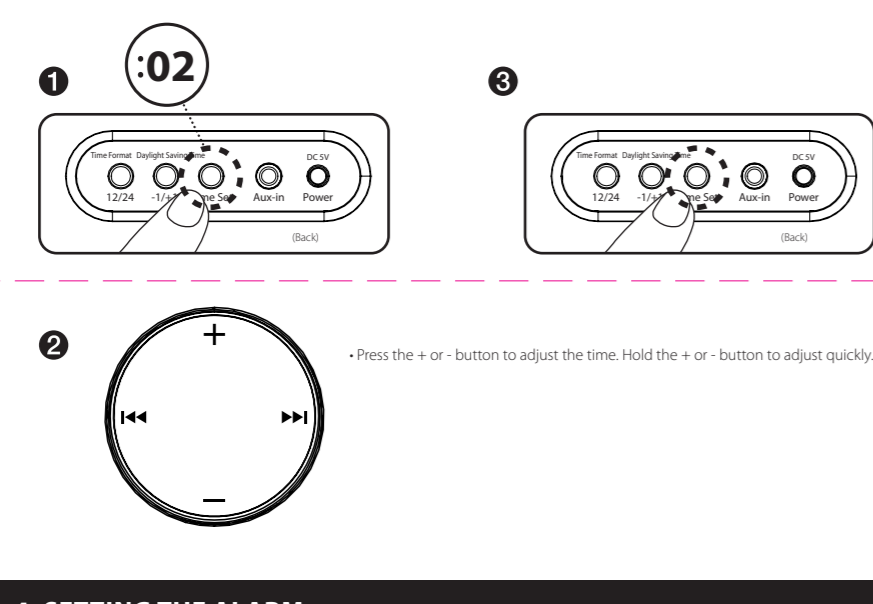
2. SETTING THE CLOCK / RÉGLAGE DE L'HEURE / UHRZEIT EINSTELLEN / AJUSTE DE LA HORA



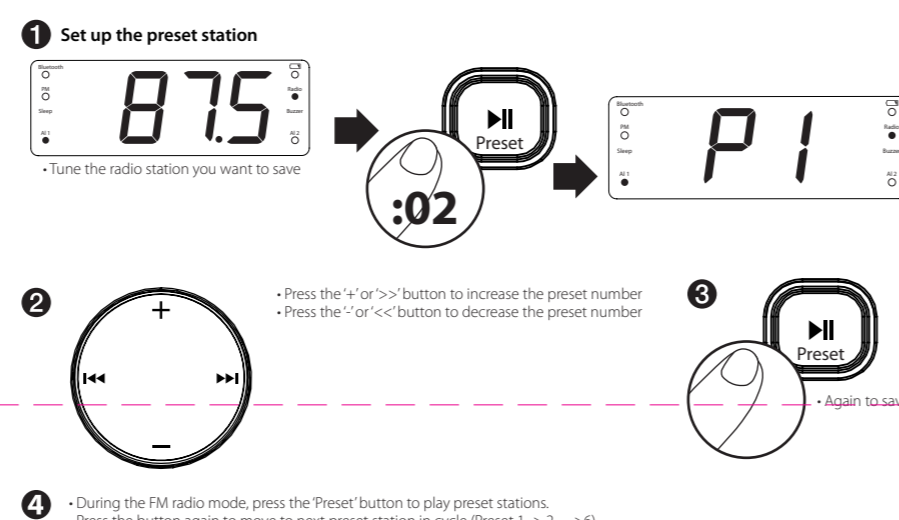
5. FM RADIO / CHARGEMENT / AUFLADEN / CARGA / 充電



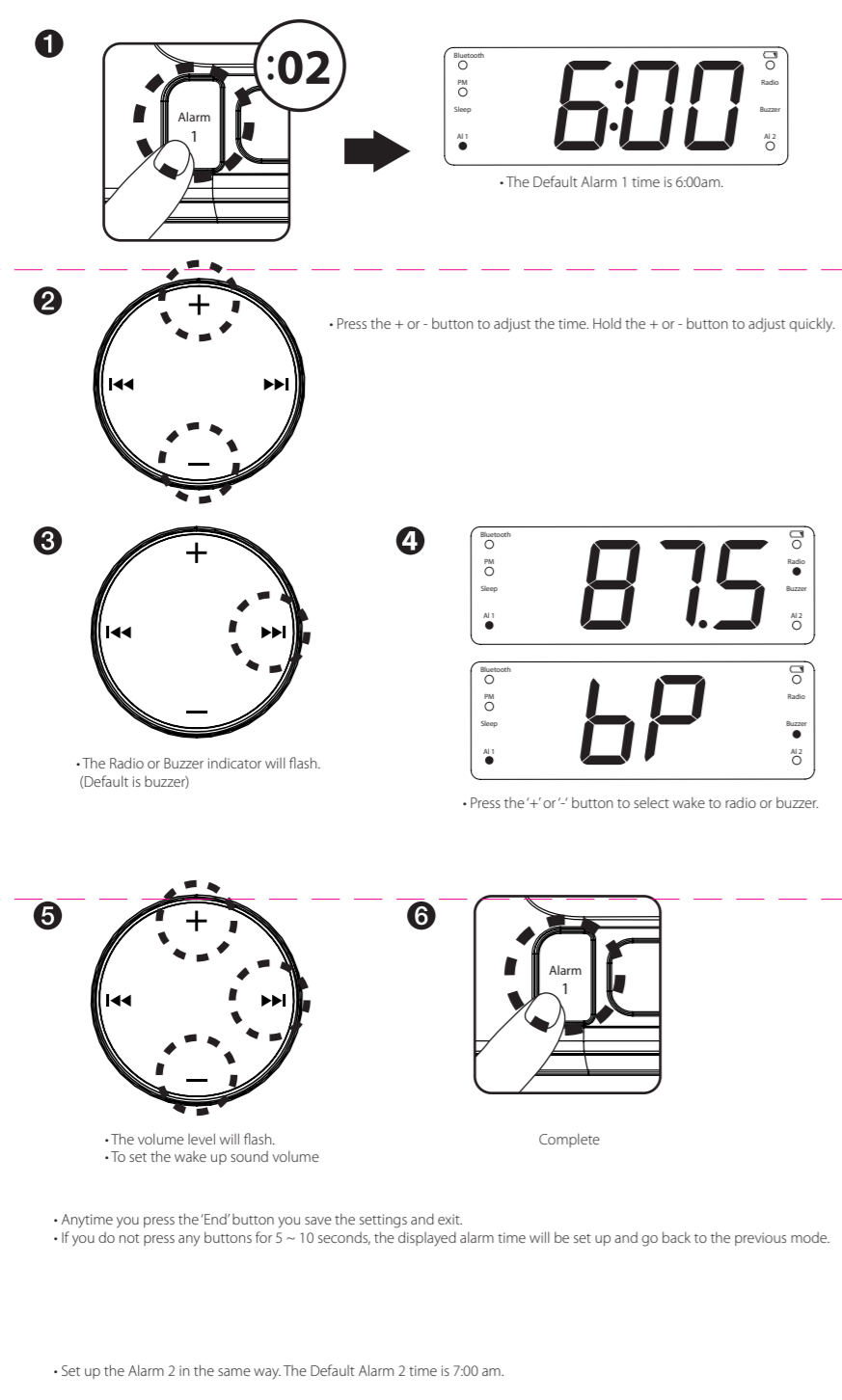
3. SETTING TIME / RÉGLAGE DE L'HEURE / UHRZEIT EINSTELLEN / AJUSTE DE LA HORA



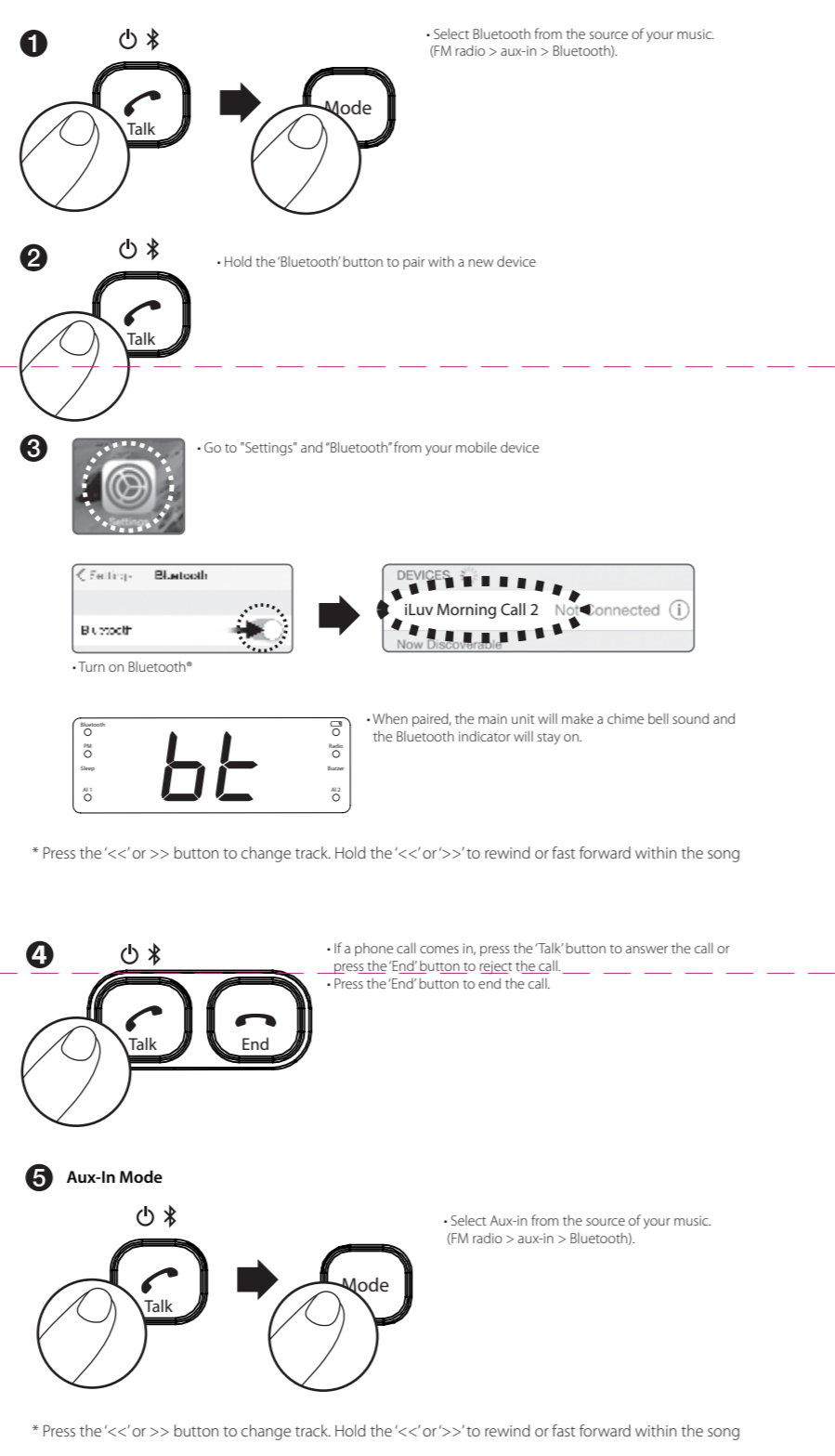
6. RADIO PRESET



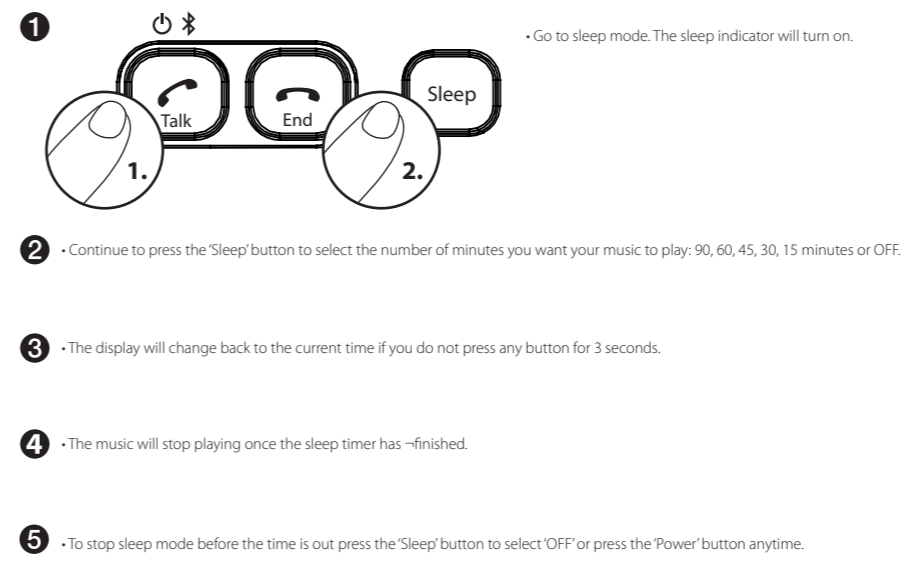
4. SETTING THE ALARM / RÉGLAGE DE L'HEURE



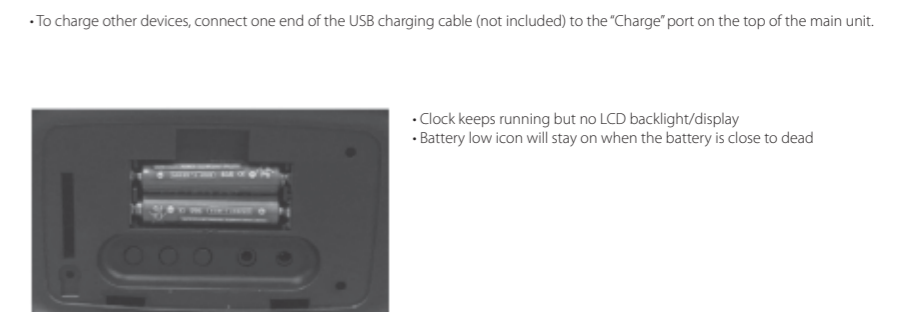
7. BLUETOOTH / AUX-IN



8. SLEEP FUNCTION



9. CHARGING / BATTERY BACKUP



Warning: Changes or modifications to this unit not expressly approved by the party responsible for compliance could void the user's authority to operate the equipment.
NOTE: This equipment has been tested and found to comply with the limits for a Class B digital device, pursuant to Part 15 of the FCC Rules.
However, there is no guarantee that interference will not occur in a particular installation.
This device complies with Part 15 of the FCC Rules. Operation is subject to the following two conditions:
(1) This device may not cause harmful interference, and
(2) This device must accept any interference received, including interference that may cause undesired operation.

GARANTEE LIMITED
INGESCHRÄNKTE GARANTIE
REPERTE GARANTIE
ΥΠΟΛΟΓΙΣΤΕ ΕΓΓΥΗΤΗ
WARRANTY LIMITED
INGESCHRÄNKTE GARANTIE
REPERTE GARANTIE
ΥΠΟΛΟΓΙΣΤΕ ΕΓΓΥΗΤΗ
WARRANTY LIMITED
INGESCHRÄNKTE GARANTIE
REPERTE GARANTIE
ΥΠΟΛΟΓΙΣΤΕ ΕΓΓΥΗΤΗ

Thank you for your purchase.
Visit our website at www.iluv.com or support.iluv.com for more information.
Please register your product at www.iluv.com/reg

iluv®, TimeShaker™, and Greenology™ trademarks are the exclusive properties of JWIN Electronics Corp.
© 2016 iluv Creative Technology. Printed in China.

iluv Creative Technology
2 Harbor Park Drive,
Port Washington, NY 11050

FCC Caution:

This device complies with part 15 of the FCC Rules. Operation is subject to the following two conditions: (1) This device may not cause harmful interference, and (2) this device must accept any interference received, including interference that may cause undesired operation.

Any Changes or modifications not expressly approved by the party responsible for compliance could void the user's authority to operate the equipment.

Note: This equipment has been tested and found to comply with the limits for a Class B digital device, pursuant to part 15 of the FCC Rules. These limits are designed to provide reasonable protection against harmful interference in a residential installation. This equipment generates uses and can radiate radio frequency energy and, if not installed and used in accordance with the instructions, may cause harmful interference to radio communications. However, there is no guarantee that interference will not occur in a particular installation. If this equipment does cause harmful interference to radio or television reception, which can be determined by turning the equipment off and on, the user is encouraged to try to correct the interference by one or more of the following measures:

- Reorient or relocate the receiving antenna.
- Increase the separation between the equipment and receiver.
- Connect the equipment into an outlet on a circuit different from that to which the receiver is connected.
- Consult the dealer or an experienced radio/TV technician for help.