

<b>TEST ITEM</b>	POWER PECTRAL DENSITY
<b>TEST MODE</b>	802.11n 20 with data rate 6.5

Channel No.	PSD (dBm/3kHz)	Limit (dBm/3kHz)	Result
Low Channel	-13.775	8	Pass
Middle Channel	-12.353	8	Pass
High Channel	-14.175	8	Pass

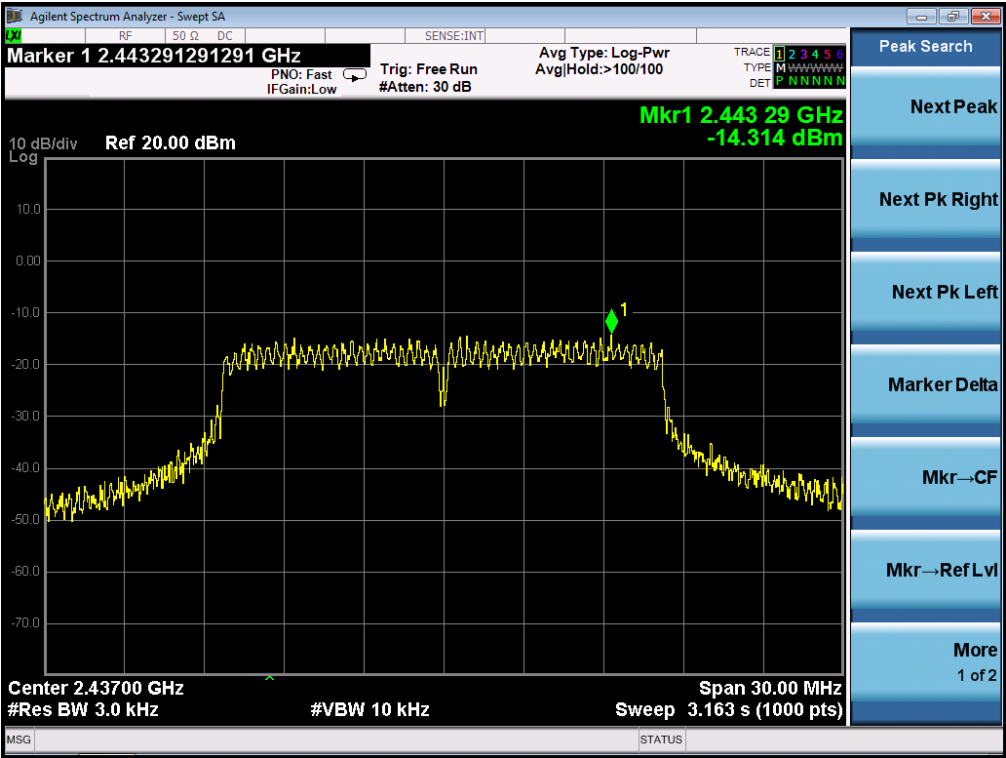
<b>TEST ITEM</b>	POWER PECTRAL DENSITY
<b>TEST MODE</b>	802.11n 40 with data rate 6.5

Channel No.	PSD (dBm/3kHz)	Limit (dBm/3kHz)	Result
Low Channel	-18.933	8	Pass
Middle Channel	-19.252	8	Pass
High Channel	-18.371	8	Pass

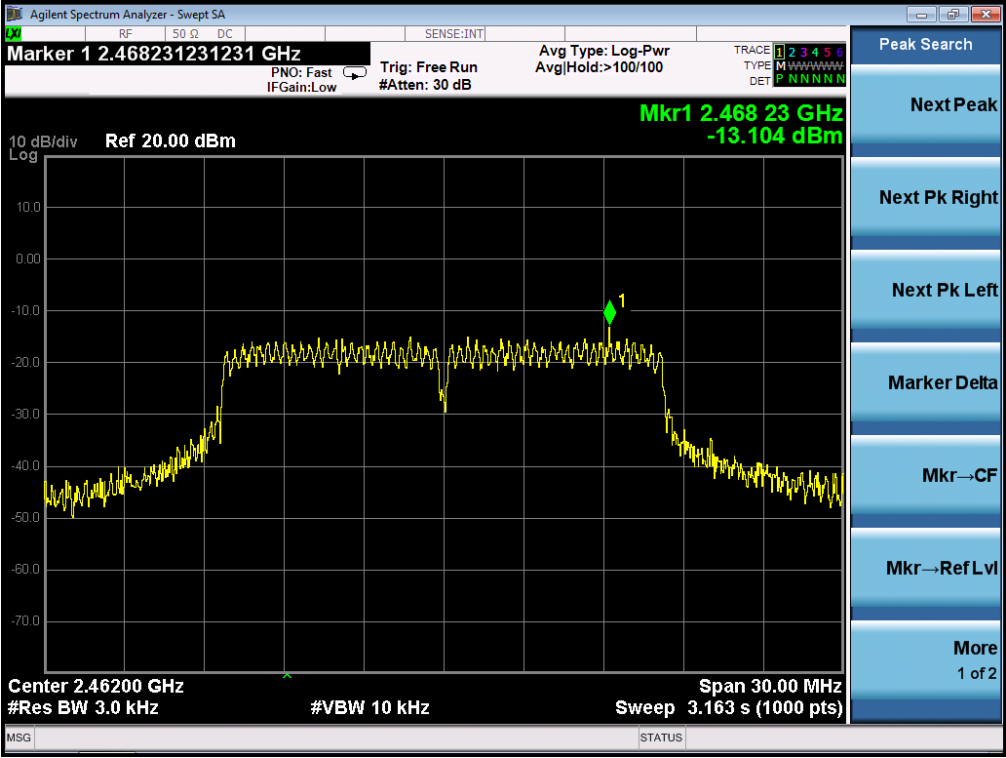




TEST PLOT OF SPECTRAL DENSITY FOR MIDDLE CHANNEL

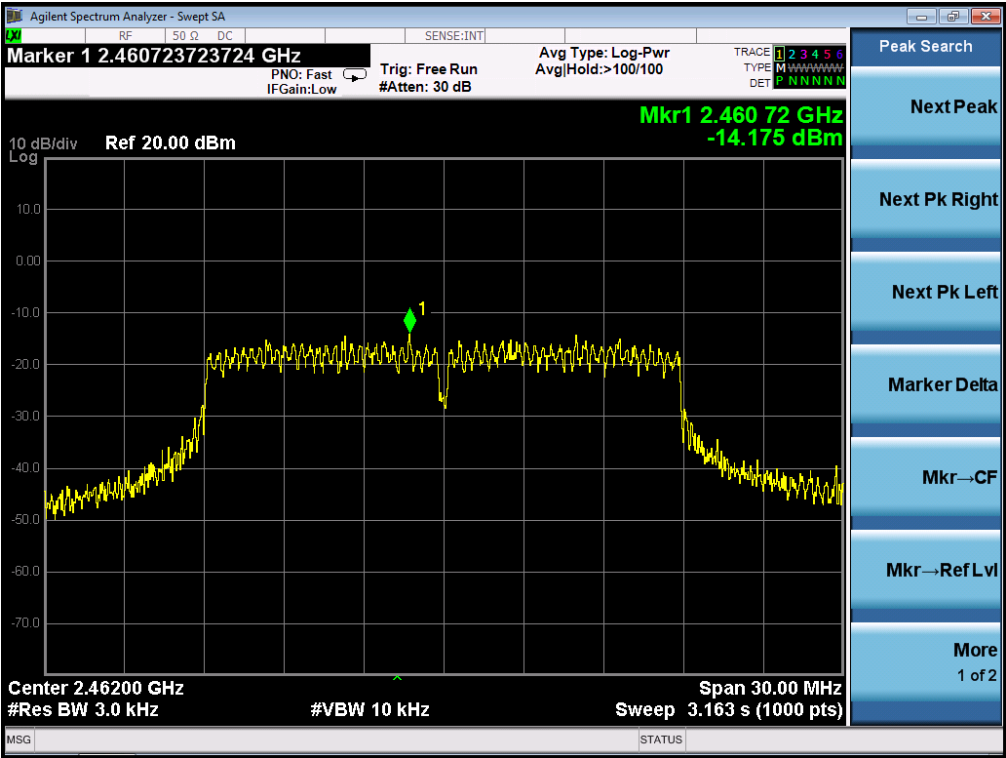


TEST PLOT OF SPECTRAL DENSITY FOR HIGH CHANNEL



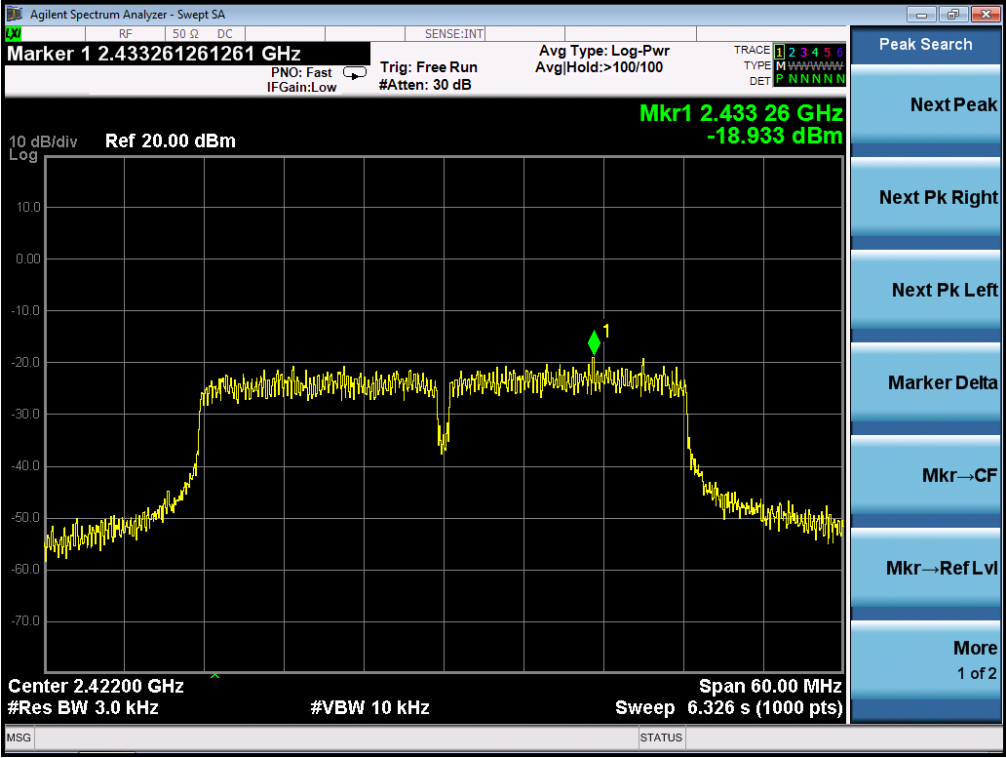


TEST PLOT OF SPECTRAL DENSITY FOR HIGH CHANNEL



802.11n 40 TEST RESULT

TEST PLOT OF SPECTRAL DENSITY FOR LOW CHANNEL





## 11. RADIATED EMISSION

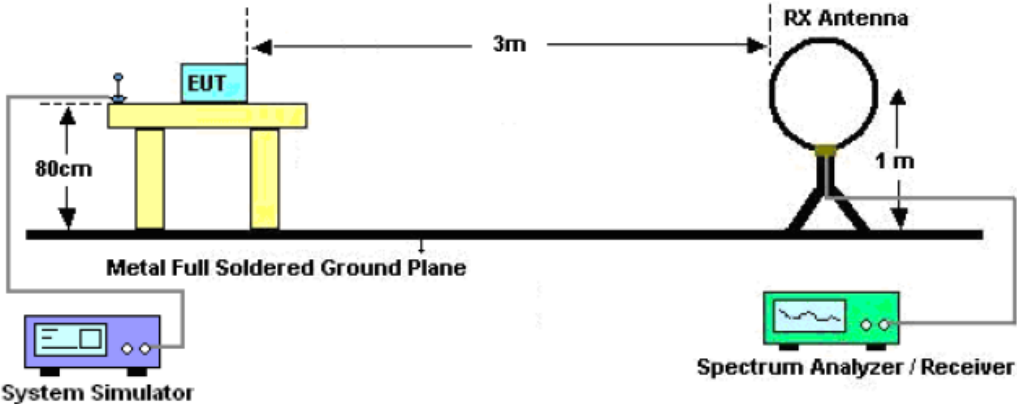
### 11.1. MEASUREMENT PROCEDURE

1. The EUT was placed on the top of the turntable 0.8 or 1.5 meter above ground. The phase center of the receiving antenna mounted on the top of a height-variable antenna tower was placed 3 meters far away from the turntable.
2. Power on the EUT and all the supporting units. The turntable was rotated by 360 degrees to determine the position of the highest radiation.
3. The height of the broadband receiving antenna was varied between one meter and four meters above ground to find the maximum emissions field strength of both horizontal and vertical polarization.
4. For each suspected emissions, the antenna tower was scan (from 1 M to 4 M) and then the turntable was rotated (from 0 degree to 360 degrees) to find the maximum reading.
5. Set the test-receiver system to Peak or CISPR quasi-peak Detect Function with specified bandwidth under Maximum Hold Mode.
6. For emissions above 1GHz, use 1MHz VBW and RBW for peak reading. Then 1MHz RBW and 10Hz VBW for average reading in spectrum analyzer. Place the measurement antenna away from each area of the EUT determined to be a source of emissions at the specified measurement distance, while keeping the measurement antenna aimed at the source of emissions at each frequency of significant emissions, with polarization oriented for maximum response. The measurement antenna may have to be higher or lower than the EUT, depending on the radiation pattern of the emission and staying aimed at the emission source for receiving the maximum signal. The final measurement antenna elevation shall be that which maximizes the emissions. The measurement antenna elevation for maximum emissions shall be restricted to a range of heights of from 1 m to 4 m above the ground or reference ground plane.
7. When the radiated emissions limits are expressed in terms of the average value of the emissions, and pulsed operation is employed, the measurement field strength shall be determined by averaging over one complete pulse train, including blanking intervals, as long as the pulse train does not exceed 0.1 seconds. As an alternative (provided the transmitter operates for longer than 0.1 seconds) or in cases where the pulse train exceeds 0.1 seconds, the measured field strength shall be determined from the average absolute voltage during a 0.1 second interval during which the field strength is at its maximum values.
8. If the emissions level of the EUT in peak mode was 3 dB lower than the average limit specified, then testing will be stopped and peak values of EUT will be reported, otherwise, the emissions which do not have 3 dB margin will be repeated one by one using the quasi-peak method for below 1GHz.
9. For testing above 1GHz, the emissions level of the EUT in peak mode was lower than average limit (that means the emissions level in peak mode also complies with the limit in average mode), then testing will be stopped and peak values of EUT will be reported, otherwise, the emissions will be measured in average mode again and reported.
10. In case the emission is lower than 30MHz, loop antenna has to be used for measurement and the recorded data should be QP measured by receiver. High - Low scan is not required in this case.

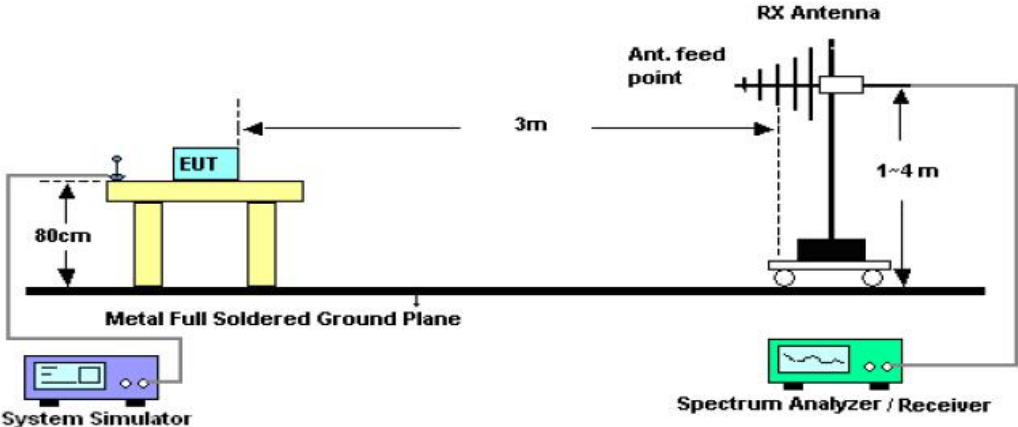


11.2. TEST SETUP

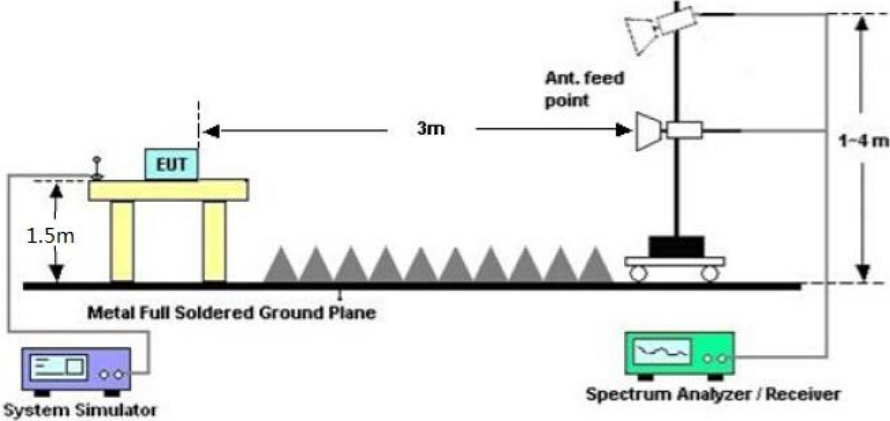
Radiated Emission Test-Setup Frequency Below 30MHz



RADIATED EMISSION TEST SETUP 30MHz-1000MHz



RADIATED EMISSION TEST SETUP ABOVE 1000MHz



### 11.3. LIMITS AND MEASUREMENT RESULT

15.209(a) Limit in the below table has to be followed

<b>Frequencies (MHz)</b>	<b>Field Strength (micorvolts/meter)</b>	<b>Measurement Distance (meters)</b>
0.009~0.490	2400/F(KHz)	300
0.490~1.705	24000/F(KHz)	30
1.705~30.0	30	30
30~88	100	3
88~216	150	3
216~960	200	3
Above 960	500	3

Note: All modes were tested For restricted band radiated emission,  
the test records reported below are the worst result compared to other modes.

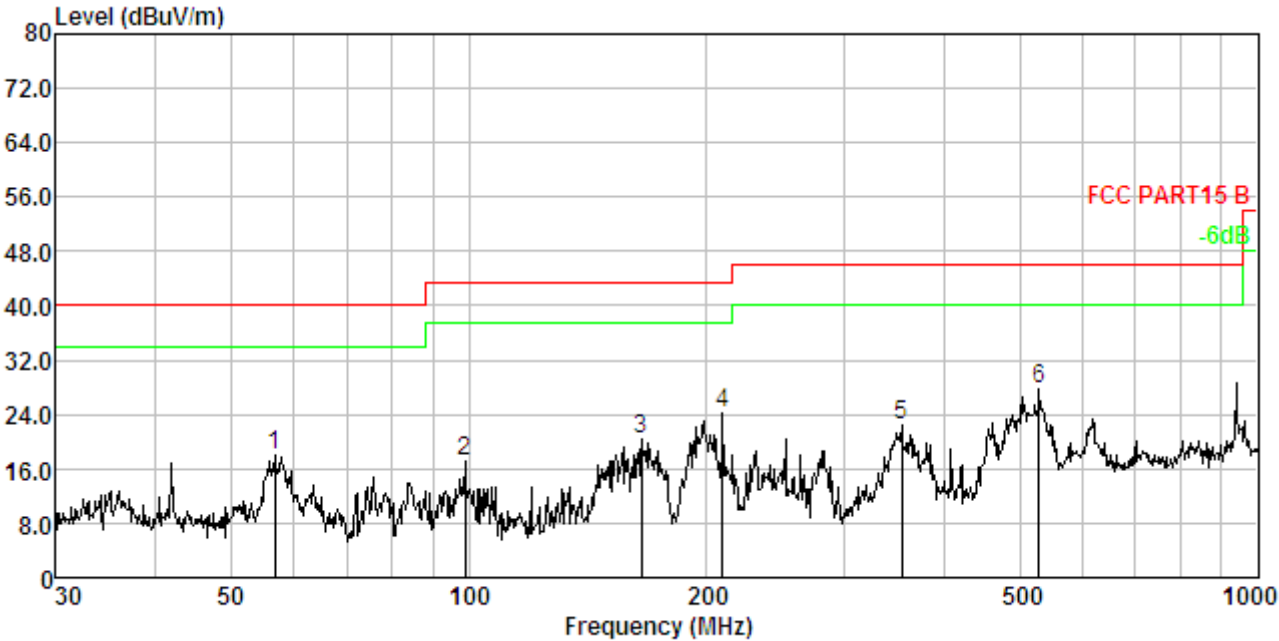
### 11.4. TEST RESULT

#### **RADIATED EMISSION BELOW 30MHZ**

No emission found between lowest internal used/generated frequencies to 30MHz.

**RADIATED EMISSION BELOW 1GHZ**

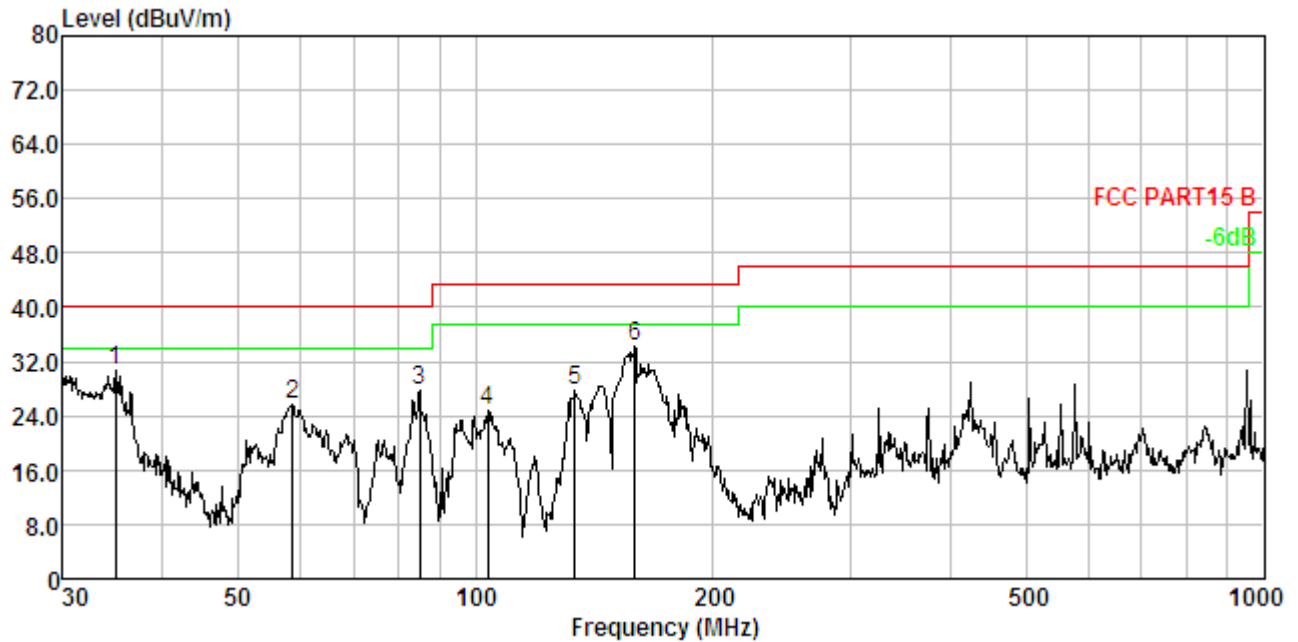
<b>EUT</b>	Wi-Fi Cloud-Based 2K HD Video Camera	<b>Model Name</b>	MYSIGHT2K
<b>Temperature</b>	25°C	<b>Relative Humidity</b>	55.4%
<b>Pressure</b>	960hPa	<b>Test Voltage</b>	Normal Voltage
<b>Test Mode</b>	802.11b with date rate 1 2412MHZ	<b>Antenna</b>	Horizontal



No.	Freq MHz	Cable Loss dB	ANT Factor dB/m	Receiver Reading dBuV	Preamp Factor dB	Emission Level dBuV/m	Limit dBuV/m	Over Limit dB	Remark
1.	56.792	1.63	12.00	34.50	30.19	17.94	40.00	-22.06	Peak
2.	98.833	2.13	10.13	35.27	30.38	17.15	43.50	-26.35	Peak
3.	165.487	2.60	13.57	34.86	30.56	20.47	43.50	-23.03	Peak
4.	210.048	2.82	10.58	41.45	30.65	24.20	43.50	-19.30	Peak
5.	354.183	3.29	14.30	35.53	30.83	22.29	46.00	-23.71	Peak
6.	528.246	3.65	17.48	37.62	30.97	27.78	46.00	-18.22	Peak

**RESULT: PASS**

<b>EUT</b>	Wi-Fi Cloud-Based 2K HD Video Camera	<b>Model Name</b>	MYSIGHT2K
<b>Temperature</b>	25°C	<b>Relative Humidity</b>	55.4%
<b>Pressure</b>	960hPa	<b>Test Voltage</b>	Normal Voltage
<b>Test Mode</b>	802.11b with data rate 1 2412MHZ	<b>Antenna</b>	Vertical



No.	Freq MHz	Cable Loss dB	ANT Factor dB/m	Receiver Reading dBuV	Preamp Factor dB	Emission Level dBuV/m	Limit dBuV/m	Over Limit dB	Remark
1.	35.005	1.19	13.40	46.18	30.02	30.75	40.00	-9.25	Peak
2.	58.613	1.66	12.10	42.22	30.20	25.78	40.00	-14.22	Peak
3.	84.999	2.00	8.68	47.28	30.33	27.63	40.00	-12.37	Peak
4.	103.806	2.18	10.57	42.54	30.40	24.89	43.50	-18.61	Peak
5.	133.619	2.41	12.90	42.83	30.49	27.65	43.50	-15.85	Peak
6.	159.225	2.57	13.88	48.37	30.55	34.27	43.50	-9.23	Peak

**RESULT: PASS**

**Note:**

1. Factor=Antenna Factor + Cable loss, Margin=Measurement-Limit.
2. The "Factor" value can be calculated automatically by software of measurement system.
3. All test modes had been pre-tested. The 802.11b at low channel is the worst case and recorded in the report.

**RADIATED EMISSION ABOVE 1GHZ**

<b>EUT</b>	Wi-Fi Cloud-Based 2K HD Video Camera	<b>Model Name</b>	MYSIGHT2K
<b>Temperature</b>	25°C	<b>Relative Humidity</b>	55.4%
<b>Pressure</b>	960hPa	<b>Test Voltage</b>	Normal Voltage
<b>Test Mode</b>	802.11b with data rate 1 2412MHZ	<b>Antenna</b>	Horizontal

Frequency (MHz)	Meter Reading (dBµV)	Factor (dB)	Emission Level (dBµV/m)	Limits (dBµV/m)	Margin (dB)	Value Type
4824.098	49.25	3.72	52.97	74	-21.03	peak
4824.035	44.15	3.72	47.87	54	-6.13	AVG
7236.113	42.38	8.15	50.53	74	-23.47	peak
7236.088	36.55	8.15	44.7	54	-9.3	AVG

Remark:  
Factor = Antenna Factor + Cable Loss – Pre-amplifier.

<b>EUT</b>	Wi-Fi Cloud-Based 2K HD Video Camera	<b>Model Name</b>	MYSIGHT2K
<b>Temperature</b>	25°C	<b>Relative Humidity</b>	55.4%
<b>Pressure</b>	960hPa	<b>Test Voltage</b>	Normal Voltage
<b>Test Mode</b>	802.11b with data rate 1 2412MHZ	<b>Antenna</b>	Vertical

Frequency (MHz)	Meter Reading (dBµV)	Factor (dB)	Emission Level (dBµV/m)	Limits (dBµV/m)	Margin (dB)	Value Type
4824.115	47.14	3.72	50.86	74	-23.14	peak
4824.040	42.85	3.72	46.57	54	-7.43	AVG
7236.048	40.57	8.15	48.72	74	-25.28	peak
7236.079	35.29	8.15	43.44	54	-10.56	AVG

Remark:  
Factor = Antenna Factor + Cable Loss – Pre-amplifier.

<b>EUT</b>	Wi-Fi Cloud-Based 2K HD Video Camera	<b>Model Name</b>	MYSIGHT2K
<b>Temperature</b>	25°C	<b>Relative Humidity</b>	55.4%
<b>Pressure</b>	960hPa	<b>Test Voltage</b>	Normal Voltage
<b>Test Mode</b>	802.11b with date rate 1 2437MHZ	<b>Antenna</b>	Horizontal

Frequency (MHz)	Meter Reading (dBµV)	Factor (dB)	Emission Level (dBµV/m)	Limits (dBµV/m)	Margin (dB)	Value Type
4874.102	49.11	3.75	52.86	74	-21.14	peak
4874.086	44.29	3.75	48.04	54	-5.96	AVG
7311.043	41.74	8.16	49.9	74	-24.1	peak
7311.063	37.59	8.16	45.75	54	-8.25	AVG
<b>Remark:</b>						
Factor = Antenna Factor + Cable Loss – Pre-amplifier.						

<b>EUT</b>	Wi-Fi Cloud-Based 2K HD Video Camera	<b>Model Name</b>	MYSIGHT2K
<b>Temperature</b>	25°C	<b>Relative Humidity</b>	55.4%
<b>Pressure</b>	960hPa	<b>Test Voltage</b>	Normal Voltage
<b>Test Mode</b>	802.11b with date rate 1 2437MHZ	<b>Antenna</b>	Vertical

Frequency (MHz)	Meter Reading (dBµV)	Factor (dB)	Emission Level (dBµV/m)	Limits (dBµV/m)	Margin (dB)	Value Type
4874.074	47.52	3.75	51.27	74	-22.73	peak
4874.102	43.12	3.75	46.87	54	-7.13	AVG
7311.058	41.52	8.16	49.68	74	-24.32	peak
7311.092	35.66	8.16	43.82	54	-10.18	AVG
<b>Remark:</b>						
Factor = Antenna Factor + Cable Loss – Pre-amplifier.						

<b>EUT</b>	Wi-Fi Cloud-Based 2K HD Video Camera	<b>Model Name</b>	MYSIGHT2K
<b>Temperature</b>	25°C	<b>Relative Humidity</b>	55.4%
<b>Pressure</b>	960hPa	<b>Test Voltage</b>	Normal Voltage
<b>Test Mode</b>	802.11b with data rate 1 2462MHZ	<b>Antenna</b>	Horizontal

Frequency (MHz)	Meter Reading (dBµV)	Factor (dB)	Emission Level (dBµV/m)	Limits (dBµV/m)	Margin (dB)	Value Type
4924.113	47.52	3.81	51.33	74	-22.67	peak
4924.020	42.87	3.81	46.68	54	-7.32	AVG
7386.024	40.53	8.19	48.72	74	-25.28	peak
7386.086	36.15	8.19	44.34	54	-9.66	AVG
Remark: Factor = Antenna Factor + Cable Loss – Pre-amplifier.						

<b>EUT</b>	Wi-Fi Cloud-Based 2K HD Video Camera	<b>Model Name</b>	MYSIGHT2K
<b>Temperature</b>	25°C	<b>Relative Humidity</b>	55.4%
<b>Pressure</b>	960hPa	<b>Test Voltage</b>	Normal Voltage
<b>Test Mode</b>	802.11b with data rate 1 2462MHZ	<b>Antenna</b>	Vertical

Frequency (MHz)	Meter Reading (dBµV)	Factor (dB)	Emission Level (dBµV/m)	Limits (dBµV/m)	Margin (dB)	Value Type
4924.044	45.88	3.81	49.69	74	-24.31	peak
4924.101	40.95	3.81	44.76	54	-9.24	AVG
7386.043	39.52	8.19	47.71	74	-26.29	peak
7386.104	35.06	8.19	43.25	54	-10.75	AVG
Remark: Factor = Antenna Factor + Cable Loss – Pre-amplifier.						

**RESULT: PASS**

**Note:**

Other emissions from 8G to 25 GHz are considered as ambient noise. No recording in the test report.  
Factor = Antenna Factor + Cable loss - Amplifier gain, Over=Measure-Limit.  
The “Factor” value can be calculated automatically by software of measurement system.  
All test modes had been pre-tested. The 802.11b mode is the worst case and recorded in the report.

## **12. BAND EDGE EMISSION**

### **12.1. MEASUREMENT PROCEDURE**

Radiated restricted band edge measurements

The radiated restricted band edge measurements are measured with an EMI test receiver connected to the receive antenna while the EUT is transmitting

### **12.2. TEST SET-UP**

same as 11.2

#### **Note:**

1. Factor=Antenna Factor + Cable loss - Amplifier gain. Field Strength=Factor + Reading level
2. The factor had been edited in the "Input Correction" of the Spectrum Analyzer. So the Amplitude of test plots is equal to Reading level plus the Factor in dB. Use the A dB( $\mu$ V) to represent the Amplitude. Use the F dB( $\mu$ V/m) to represent the Field Strength. So A=F.



12.3. TEST RESULT

EUT	Wi-Fi Cloud-Based 2K HD Video Camera	Model Name	MYSIGHT2K
Temperature	25°C	Relative Humidity	55.4%
Pressure	960hPa	Test Voltage	Normal Voltage
Test Mode	802.11b with data rate 1 2412MHZ	Antenna	Horizontal

PK



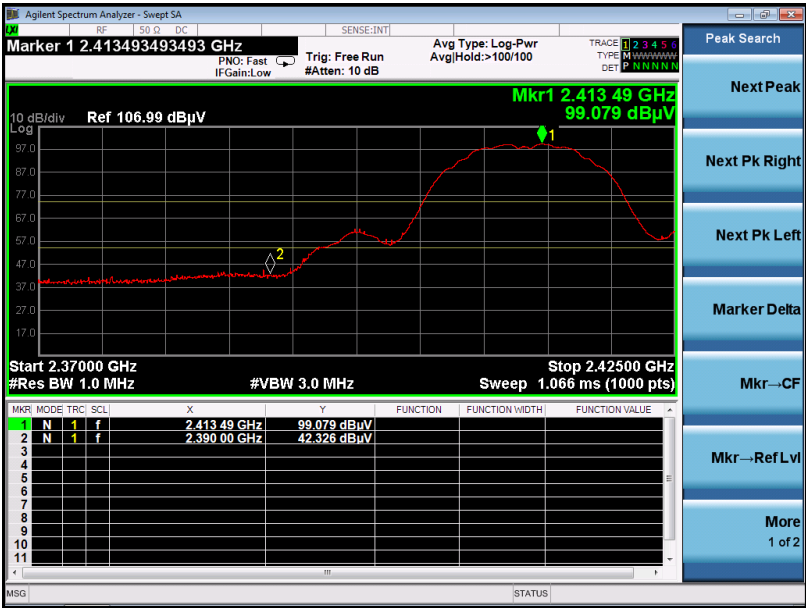
AV



RESULT: PASS

EUT	Wi-Fi Cloud-Based 2K HD Video Camera	Model Name	MYSIGHT2K
Temperature	25°C	Relative Humidity	55.4%
Pressure	960hPa	Test Voltage	Normal Voltage
Test Mode	802.11b with data rate 1 2412MHZ	Antenna	Vertical

PK



AV



RESULT: PASS

EUT	Wi-Fi Cloud-Based 2K HD Video Camera	Model Name	MYSIGHT2K
Temperature	25°C	Relative Humidity	55.4%
Pressure	960hPa	Test Voltage	Normal Voltage
Test Mode	802.11b with data rate 1 2462MHZ	Antenna	Horizontal

PK



AV



RESULT: PASS

EUT	Wi-Fi Cloud-Based 2K HD Video Camera	Model Name	MYSIGHT2K
Temperature	25°C	Relative Humidity	55.4%
Pressure	960hPa	Test Voltage	Normal Voltage
Test Mode	802.11b with data rate 1 2462MHZ	Antenna	Vertical

PK



AV



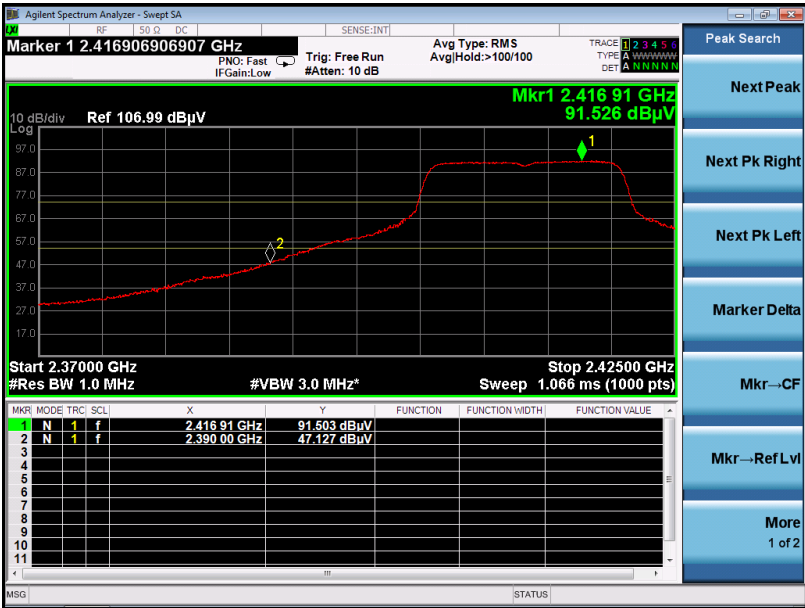
RESULT: PASS

EUT	Wi-Fi Cloud-Based 2K HD Video Camera	Model Name	MYSIGHT2K
Temperature	25°C	Relative Humidity	55.4%
Pressure	960hPa	Test Voltage	Normal Voltage
Test Mode	802.11g with data rate 6 2412MHZ	Antenna	Horizontal

PK



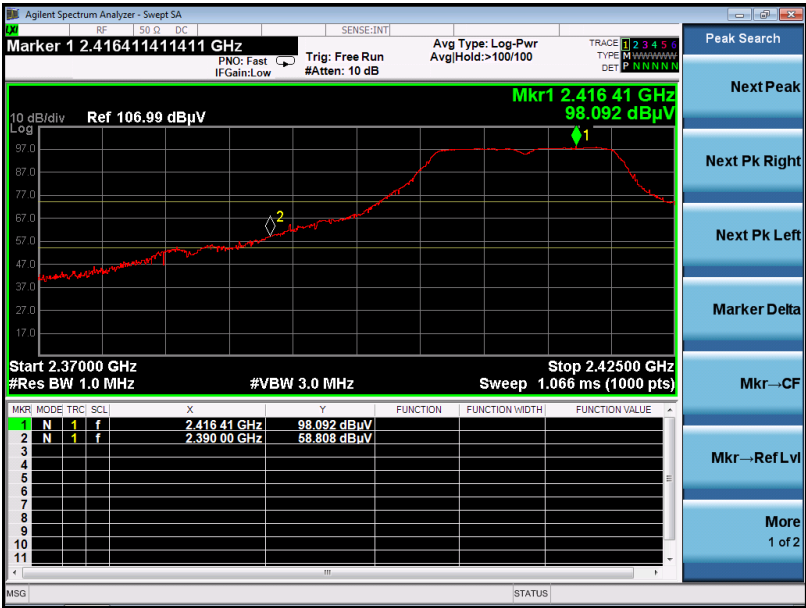
AV



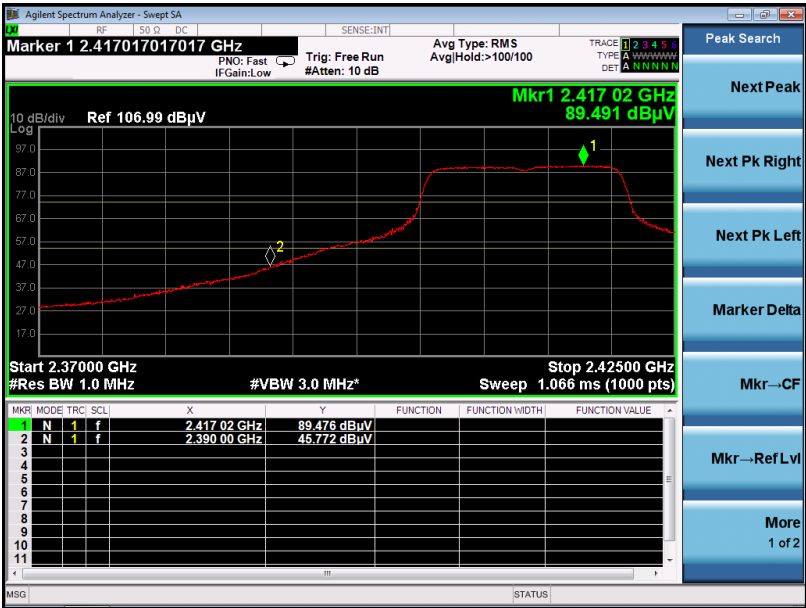
RESULT: PASS

EUT	Wi-Fi Cloud-Based 2K HD Video Camera	Model Name	MYSIGHT2K
Temperature	25°C	Relative Humidity	55.4%
Pressure	960hPa	Test Voltage	Normal Voltage
Test Mode	802.11g with data rate 6 2412MHZ	Antenna	Vertical

PK



AV



RESULT: PASS

EUT	Wi-Fi Cloud-Based 2K HD Video Camera	Model Name	MYSIGHT2K
Temperature	25°C	Relative Humidity	55.4%
Pressure	960hPa	Test Voltage	Normal Voltage
Test Mode	802.11g with data rate 6 2462MHZ	Antenna	Horizontal

PK



AV



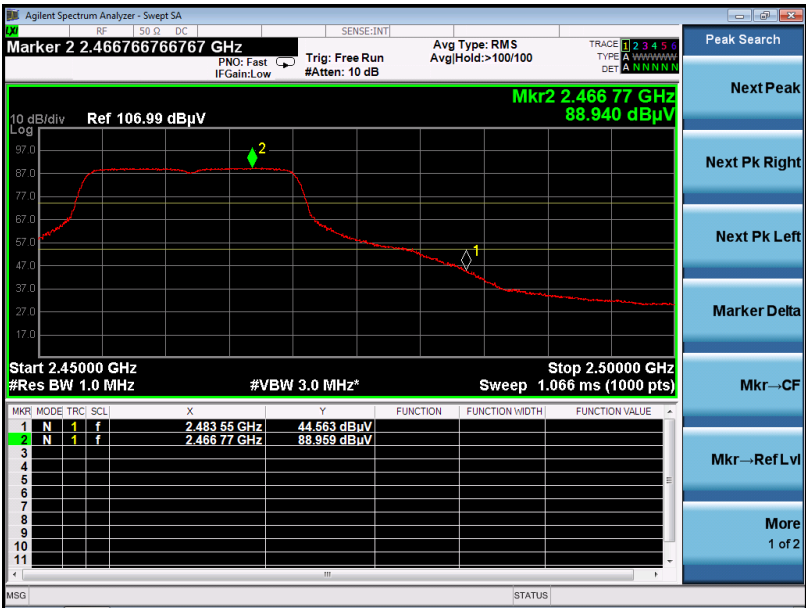
RESULT: PASS

EUT	Wi-Fi Cloud-Based 2K HD Video Camera	Model Name	MYSIGHT2K
Temperature	25°C	Relative Humidity	55.4%
Pressure	960hPa	Test Voltage	Normal Voltage
Test Mode	802.11g with data rate 6 2462MHZ	Antenna	Vertical

PK



AV



RESULT: PASS



EUT	Wi-Fi Cloud-Based 2K HD Video Camera	Model Name	MYSIGHT2K
Temperature	25°C	Relative Humidity	55.4%
Pressure	960hPa	Test Voltage	Normal Voltage
Test Mode	802.11n 20 with data rate 6.5 2412MHZ	Antenna	Horizontal

PK



AV



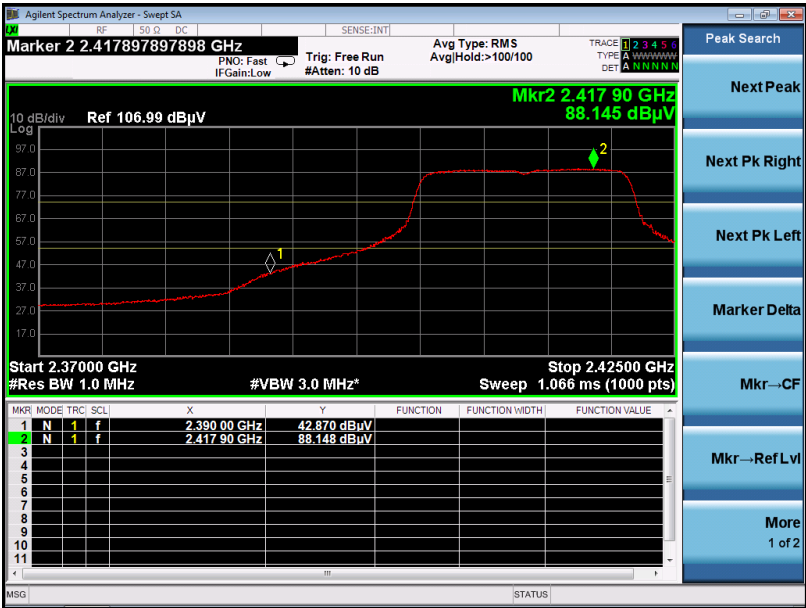
RESULT: PASS

EUT	Wi-Fi Cloud-Based 2K HD Video Camera	Model Name	MYSIGHT2K
Temperature	25°C	Relative Humidity	55.4%
Pressure	960hPa	Test Voltage	Normal Voltage
Test Mode	802.11n 20 with data rate 6.5 2412MHZ	Antenna	Vertical

PK



AV



RESULT: PASS

EUT	Wi-Fi Cloud-Based 2K HD Video Camera	Model Name	MYSIGHT2K
Temperature	25°C	Relative Humidity	55.4%
Pressure	960hPa	Test Voltage	Normal Voltage
Test Mode	802.11n 20with data rate 6.5 2462MHZ	Antenna	Horizontal

PK



AV



RESULT: PASS

EUT	Wi-Fi Cloud-Based 2K HD Video Camera	Model Name	MYSIGHT2K
Temperature	25°C	Relative Humidity	55.4%
Pressure	960hPa	Test Voltage	Normal Voltage
Test Mode	802.11n 20 with data rate 6.5 2462MHZ	Antenna	Vertical

PK



AV



RESULT: PASS

EUT	Wi-Fi Cloud-Based 2K HD Video Camera	Model Name	MYSIGHT2K
Temperature	25°C	Relative Humidity	55.4%
Pressure	960hPa	Test Voltage	Normal Voltage
Test Mode	802.11n 40 with data rate 6.5 2422MHZ	Antenna	Horizontal

PK



AV



RESULT: PASS

EUT	Wi-Fi Cloud-Based 2K HD Video Camera	Model Name	MYSIGHT2K
Temperature	25°C	Relative Humidity	55.4%
Pressure	960hPa	Test Voltage	Normal Voltage
Test Mode	802.11n 40 with data rate 6.5 2422MHZ	Antenna	Vertical

PK



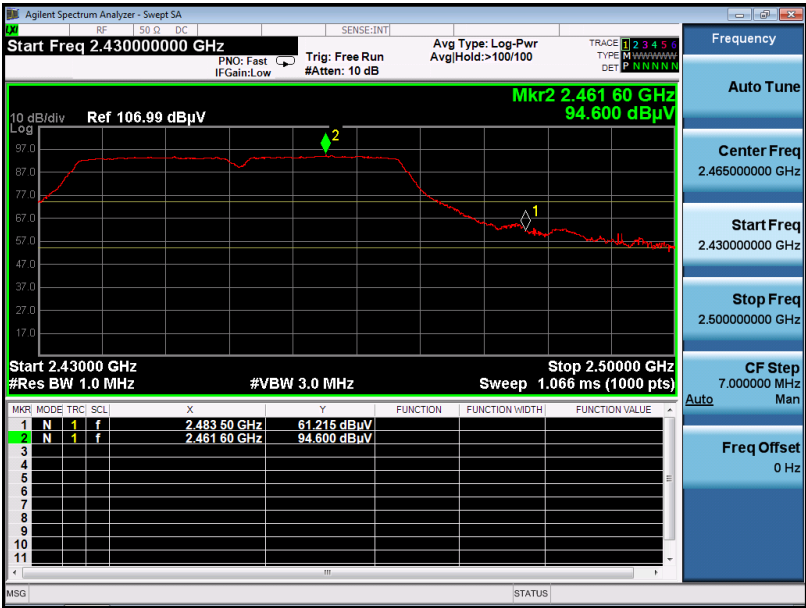
AV



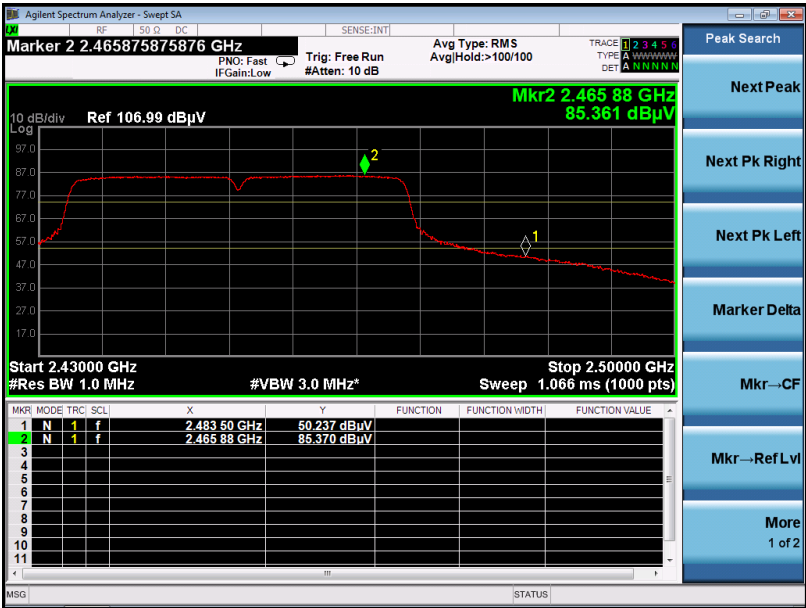
RESULT: PASS

EUT	Wi-Fi Cloud-Based 2K HD Video Camera	Model Name	MYSIGHT2K
Temperature	25°C	Relative Humidity	55.4%
Pressure	960hPa	Test Voltage	Normal Voltage
Test Mode	802.11n 40with data rate 6.5 2452MHZ	Antenna	Horizontal

PK



AV



RESULT: PASS

EUT	Wi-Fi Cloud-Based 2K HD Video Camera	Model Name	MYSIGHT2K
Temperature	25°C	Relative Humidity	55.4%
Pressure	960hPa	Test Voltage	Normal Voltage
Test Mode	802.11n 40 with data rate 6.5 2452MHZ	Antenna	Vertical

PK



AV



RESULT: PASS



**13. FCC LINE CONDUCTED EMISSION TEST**

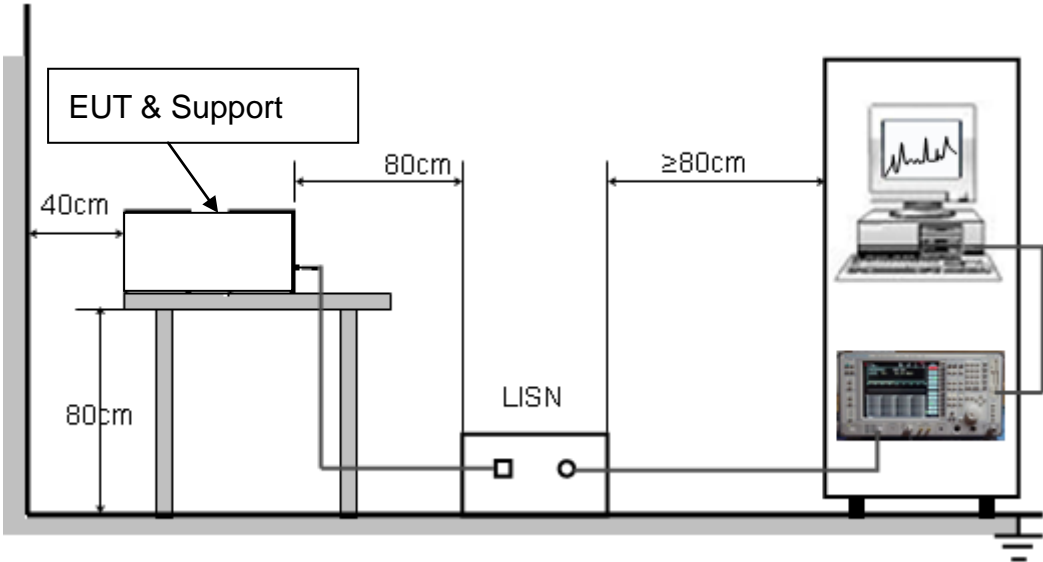
**13.1. LIMITS OF LINE CONDUCTED EMISSION TEST**

Frequency	Maximum RF Line Voltage	
	Q.P.( dBuV)	Average( dBuV)
150kHz~500kHz	66-56	56-46
500kHz~5MHz	56	46
5MHz~30MHz	60	50

Note:

1. The lower limit shall apply at the transition frequency.
2. The limit decreases linearly with the logarithm of the frequency in the range 0.15 MHz to 0.50 MHz.

**13.2. BLOCK DIAGRAM OF LINE CONDUCTED EMISSION TEST**



### **13.3. PRELIMINARY PROCEDURE OF LINE CONDUCTED EMISSION TEST**

1. The equipment was set up as per the test configuration to simulate typical actual usage per the user's manual. When the EUT is a tabletop system, a wooden table with a height of 0.8 meters is used and is placed on the ground plane as per ANSI C63.10 (see Test Facility for the dimensions of the ground plane used). When the EUT is a floor-standing equipment, it is placed on the ground plane which has a 3-12 mm non-conductive covering to insulate the EUT from the ground plane.
2. Support equipment, if needed, was placed as per ANSI C63.10.
3. All I/O cables were positioned to simulate typical actual usage as per ANSI C63.10.
4. All support equipments received AC120V/60Hz power from a LISN, if any.
5. The EUT received 120V/60Hz power by a LISN..
6. The test program was started. Emissions were measured on each current carrying line of the EUT using a spectrum Analyzer / Receiver connected to the LISN powering the EUT. The LISN has two monitoring points: Line 1 (Hot Side) and Line 2 (Neutral Side). Two scans were taken: one with Line 1 connected to Analyzer / Receiver and Line 2 connected to a 50 ohm load; the second scan had Line 1 connected to a 50 ohm load and Line 2 connected to the Analyzer / Receiver.
7. Analyzer / Receiver scanned from 150 kHz to 30MHz for emissions in each of the test modes.
8. During the above scans, the emissions were maximized by cable manipulation.
9. The test mode(s) were scanned during the preliminary test.

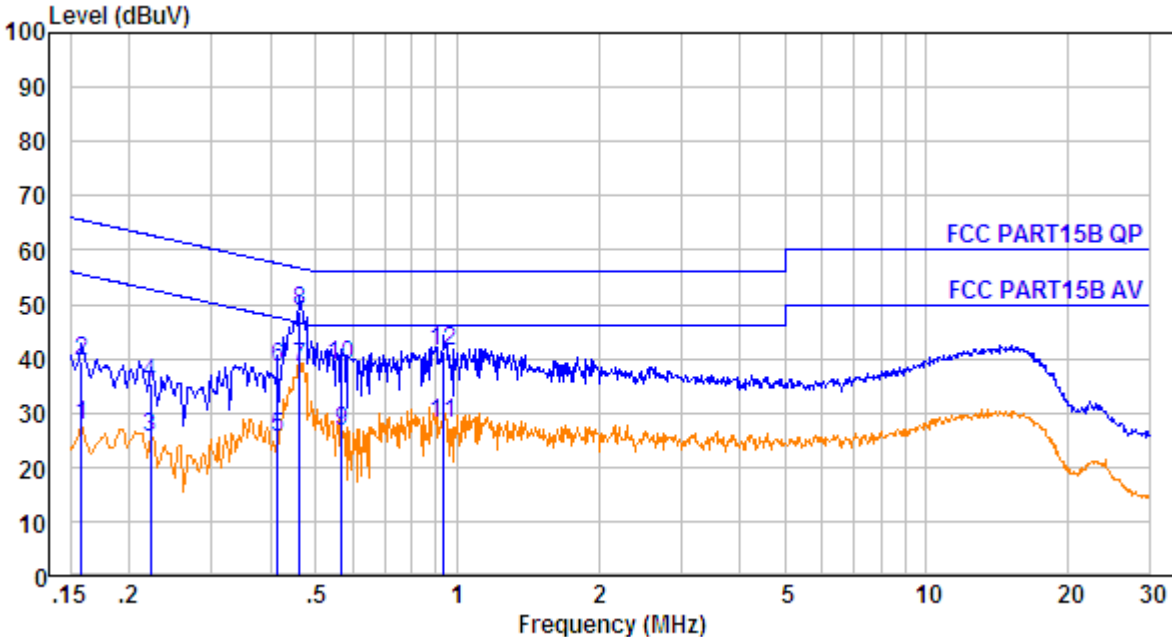
Then, the EUT configuration and cable configuration of the above highest emission level were recorded for reference of final testing.

### **13.4. FINAL PROCEDURE OF LINE CONDUCTED EMISSION TEST**

1. EUT and support equipment was set up on the test bench as per step 2 of the preliminary test.
2. A scan was taken on both power lines, Line 1 and Line 2, recording at least the six highest emissions. Emission frequency and amplitude were recorded into a computer in which correction factors were used to calculate the emission level and compare reading to the applicable limit. If EUT emission level was less -2dB to the A.V. limit in Peak mode, then the emission signal was re-checked using Q.P and Average detector.
3. The test data of the worst case condition(s) was reported on the Summary Data page.

13.5. TEST RESULT OF LINE CONDUCTED EMISSION TEST

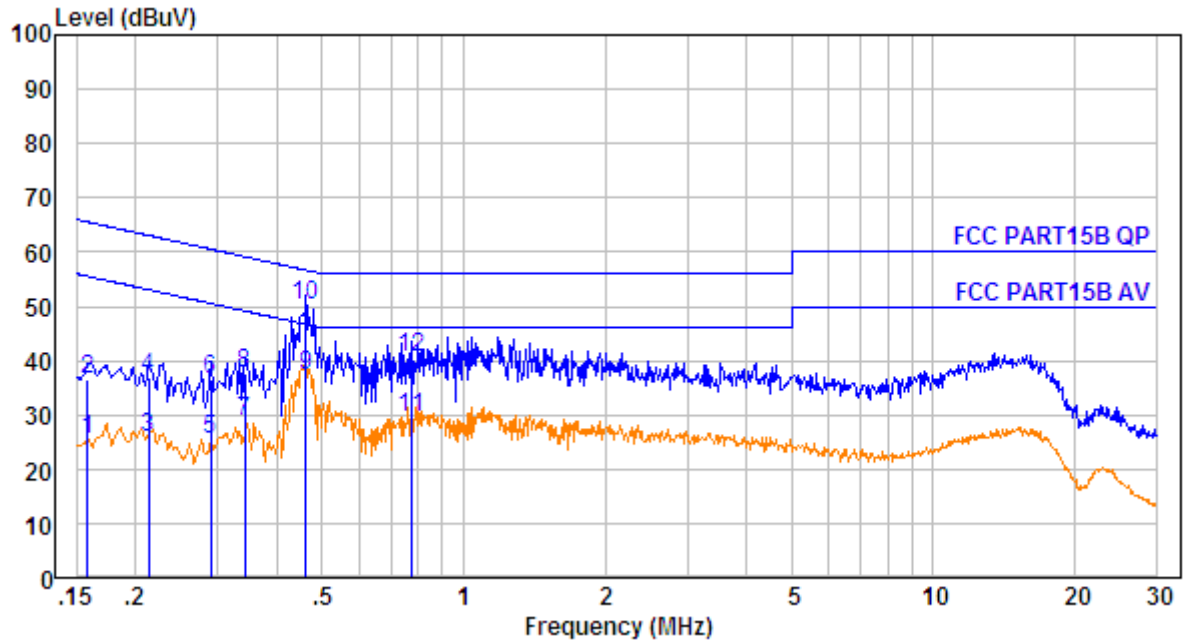
Line Conducted Emission Test Line 1-L



No.	Freq MHz	Cable Loss dB	AMN Factor dB	Receiver Reading dBuV	Emission Level dBuV	Limit dBuV	Over Limit dB	Remark
1.	0.158	10.60	0.60	16.45	27.65	55.56	-27.91	Average
2.	0.158	10.60	0.60	28.45	39.65	65.56	-25.91	QP
3.	0.222	10.61	0.60	14.22	25.43	52.74	-27.31	Average
4.	0.222	10.61	0.60	24.22	35.43	62.74	-27.31	QP
5.	0.415	10.64	0.60	14.17	25.41	47.55	-22.14	Average
6.	0.415	10.64	0.60	27.17	38.41	57.55	-19.14	QP
7.	0.461	10.64	0.60	27.29	38.53	46.67	-8.14	Average
8.	0.461	10.64	0.60	37.29	48.53	56.67	-8.14	QP
9.	0.567	10.65	0.60	15.49	26.74	46.00	-19.26	Average
10.	0.567	10.65	0.60	27.49	38.74	56.00	-17.26	QP
11.	0.938	10.67	0.60	16.91	28.18	46.00	-17.82	Average
12.	0.938	10.67	0.60	29.91	41.18	56.00	-14.82	QP

RESULT: PASS

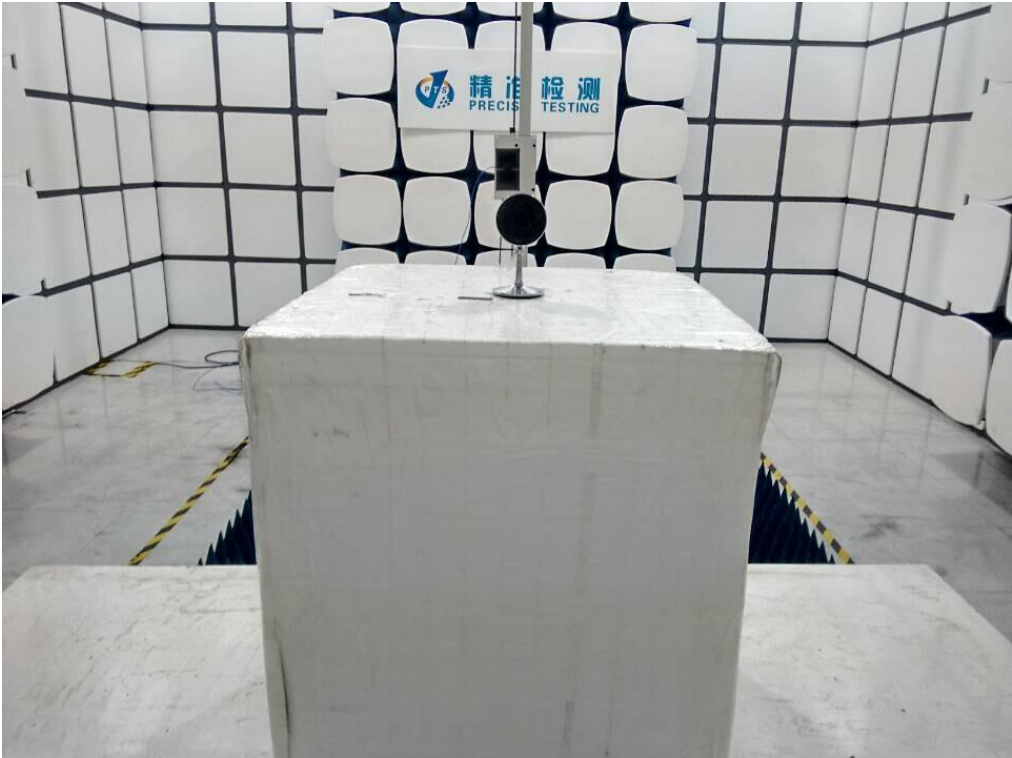
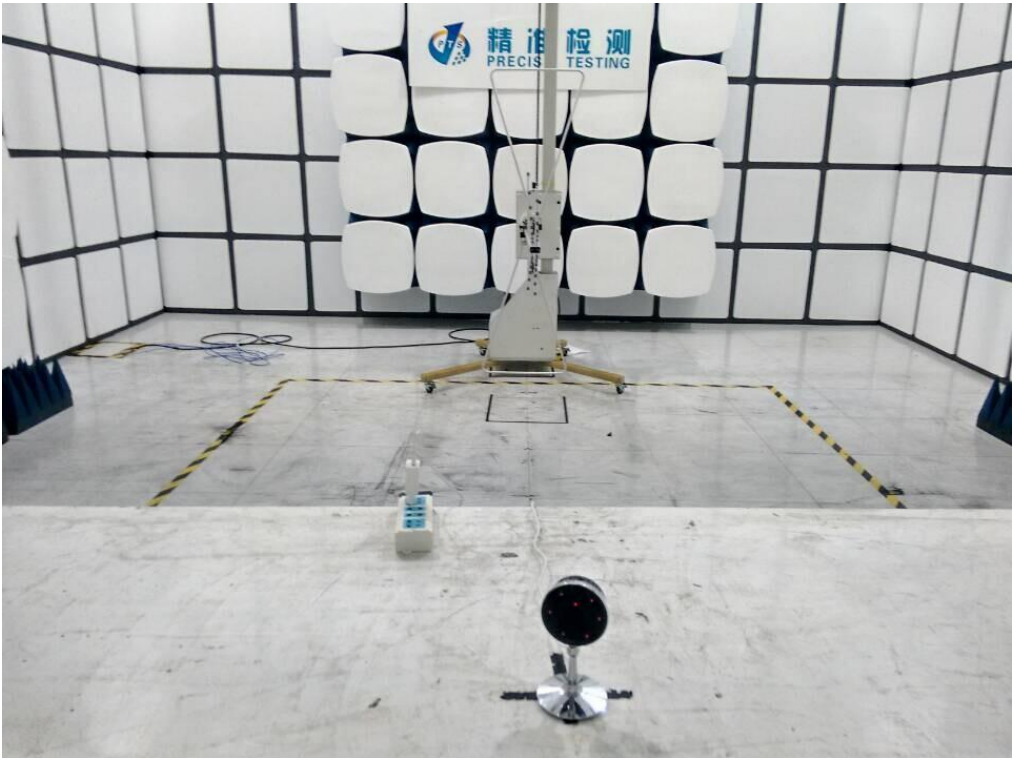
Line Conducted Emission Test Line 2-N



No.	Freq MHz	Cable Loss dB	AMN Factor dB	Receiver Reading dBuV	Emission Level dBuV	Limit dBuV	Over Limit dB	Remark
1.	0.158	10.60	0.60	14.26	25.46	55.56	-30.10	Average
2.	0.158	10.60	0.60	25.26	36.46	65.56	-29.10	QP
3.	0.214	10.61	0.60	14.62	25.83	53.05	-27.22	Average
4.	0.214	10.61	0.60	25.62	36.83	63.05	-26.22	QP
5.	0.289	10.63	0.60	14.41	25.64	50.54	-24.90	Average
6.	0.289	10.63	0.60	25.41	36.64	60.54	-23.90	QP
7.	0.343	10.63	0.60	17.47	28.70	49.13	-20.43	Average
8.	0.343	10.63	0.60	26.47	37.70	59.13	-21.43	QP
9.	0.461	10.64	0.60	25.90	37.14	46.67	-9.53	Average
10.	0.461	10.64	0.60	38.90	50.14	56.67	-6.53	QP
11.	0.775	10.66	0.60	18.42	29.68	46.00	-16.32	Average
12.	0.775	10.66	0.60	29.42	40.68	56.00	-15.32	QP

**RESULT: PASS**

**APPENDIX A: PHOTOGRAPHS OF TEST SETUP**  
**FCC RADIATED EMISSION TEST SETUP**



FCC CONDUCTED EMISSION TEST SETUP

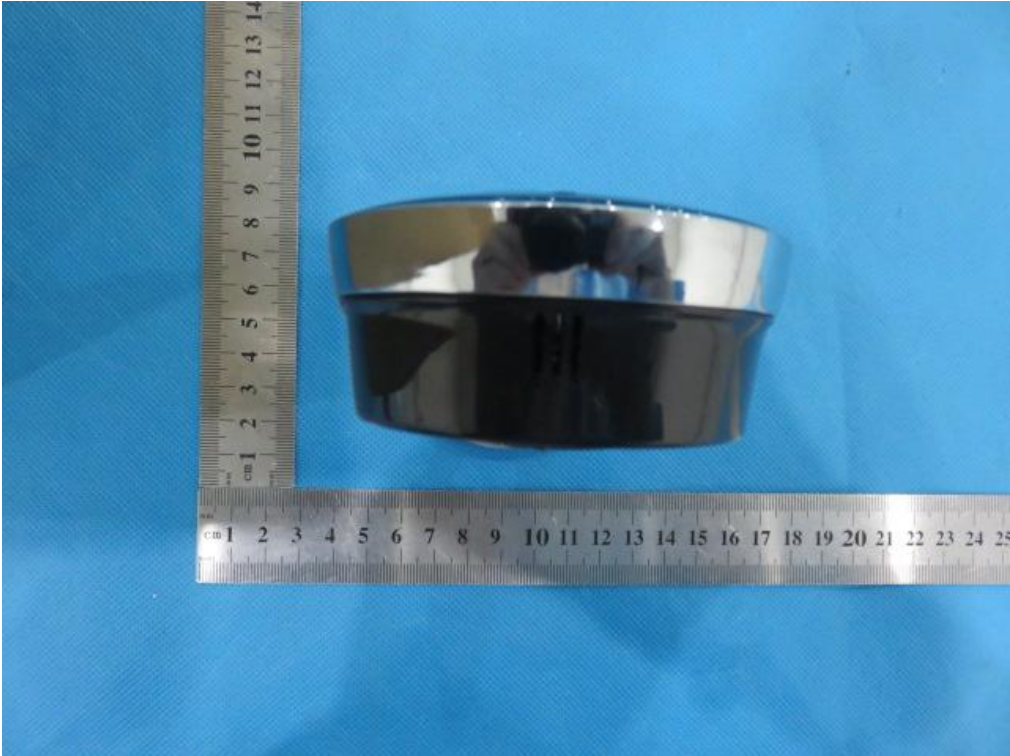




**APPENDIX B: PHOTOGRAPHS OF EUT**  
TOTAL VIEW OF EUT



TOP VIEW OF EUT



BOTTOM VIEW OF EUT



FRONT VIEW OF EUT





BACK VIEW OF EUT



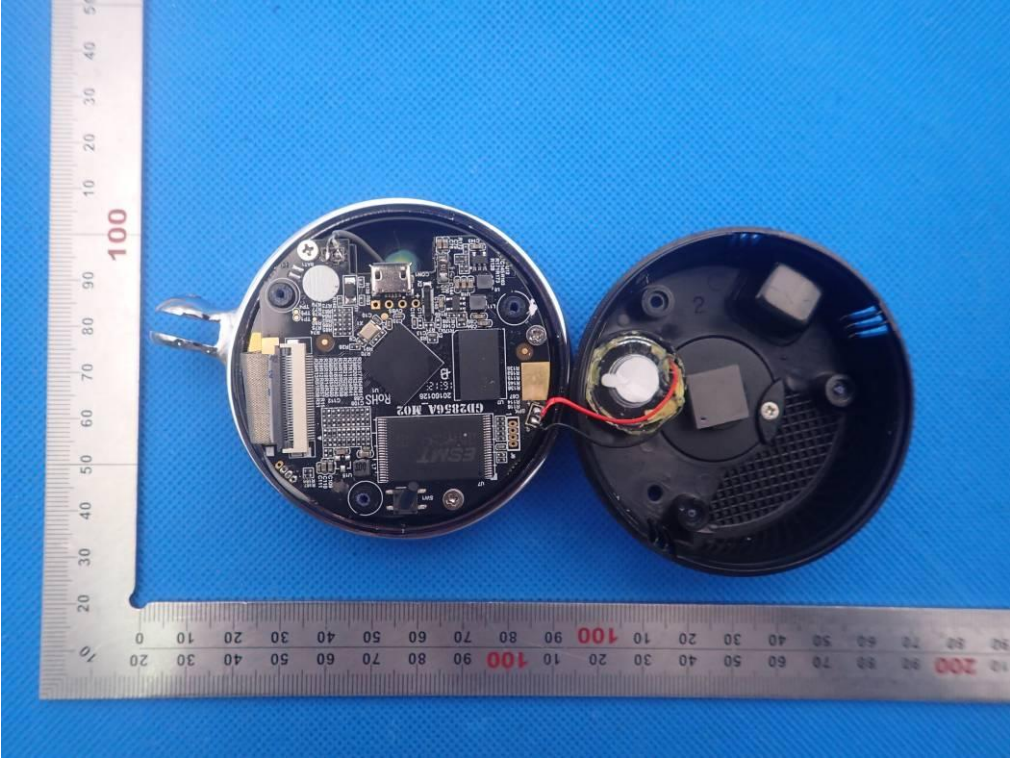
LEFT VIEW OF EUT



RIGHT VIEW OF EUT

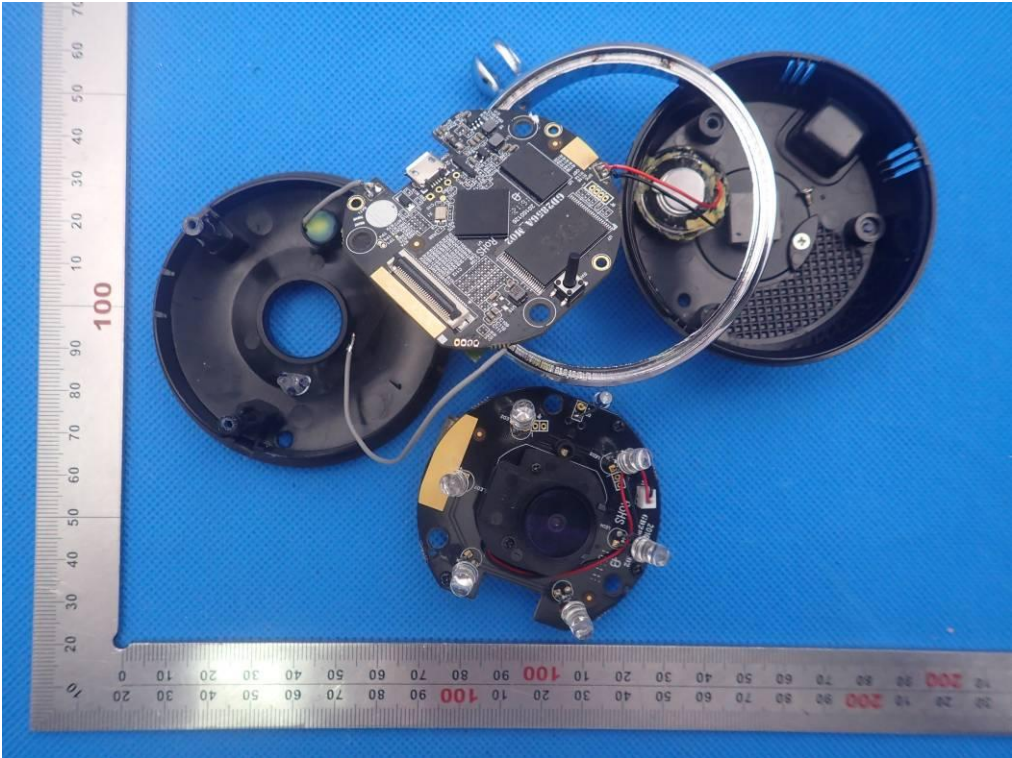


OPEN VIEW OF EUT

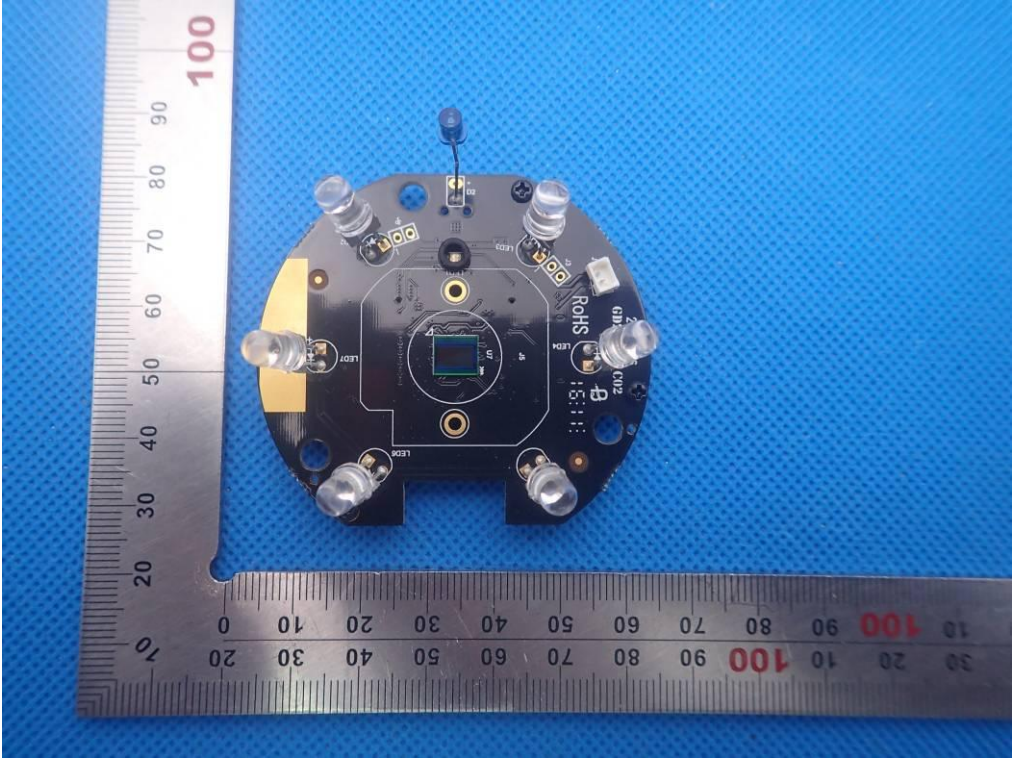




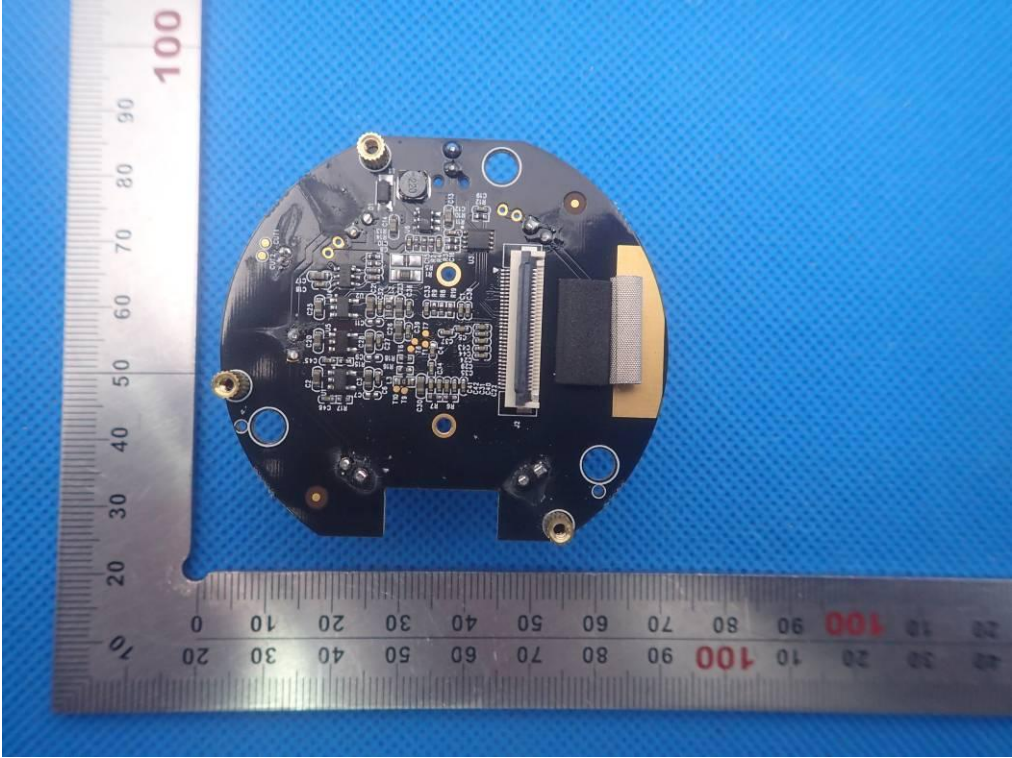
INTERNAL VIEW OF EUT-1



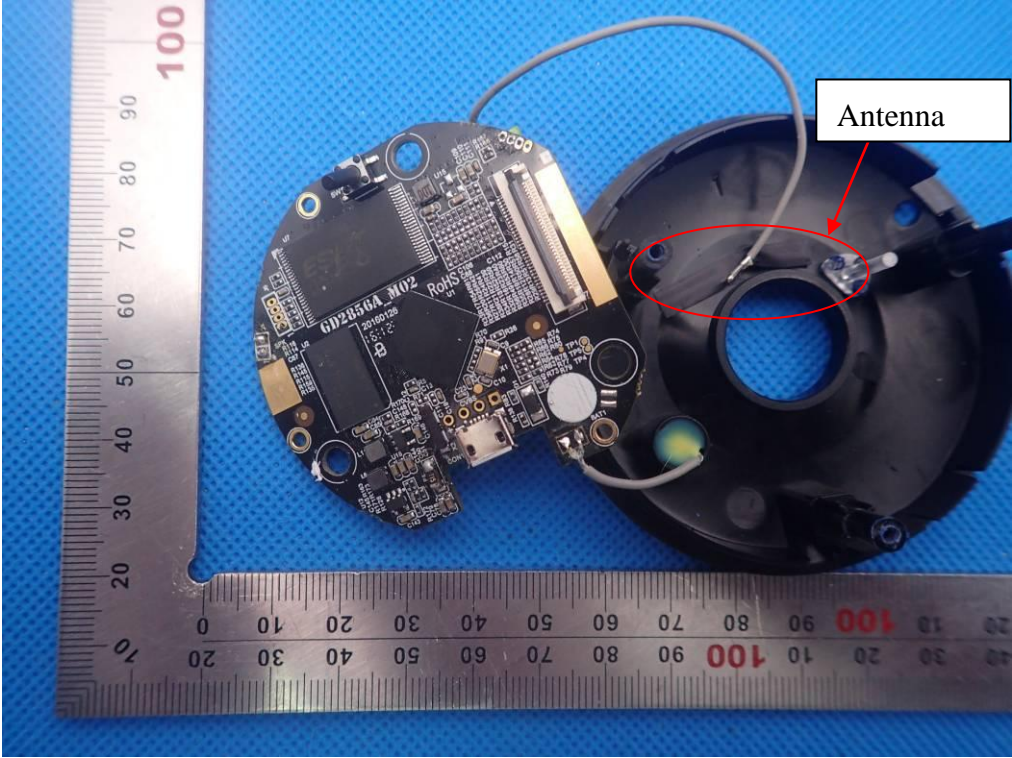
INTERNAL VIEW OF EUT-2



INTERNAL VIEW OF EUT-3

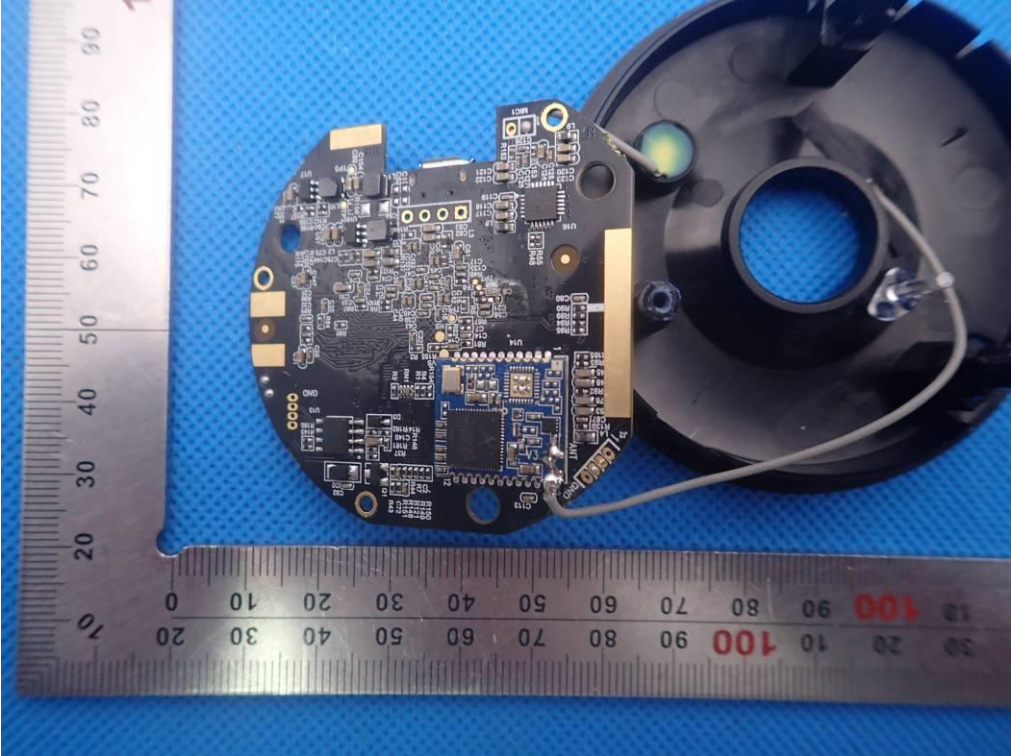


INTERNAL VIEW OF EUT-4





INTERNAL VIEW OF EUT-5



-----END OF REPORT-----