

# Creative Service Department

Quick Start Guide design	
Product: iSP245	Revision 1 : FEB.20 .2012
Project: Quick Start Guide	2 :
Designer: SANGYUB CHOO	3 :
Scale : 1 : 1	4 :
Print-out: 100 %	5 :



- Please do not print comment layer
- 100% actual size
- 4-color CMYK printing

Designed by iLuv in New York

Hereby, Wonders Technology Co., Ltd., declares that this Bluetooth Speaker is in compliance with the essential requirements and other relevant provisions of Directive 1999/5/EC. This device complies with Part 15 of the FCC Rules. Operation is subject to the following two conditions: (1) this device may not cause harmful interference, and (2) this device must accept any interference received, including interference that may cause undesired operation.

The manufacturer is not responsible for any radio or TV interference caused by unauthorized modifications to this equipment. Such modifications could void the user's authority to operate the equipment.

Portable Stereo Bluetooth Speaker Stand

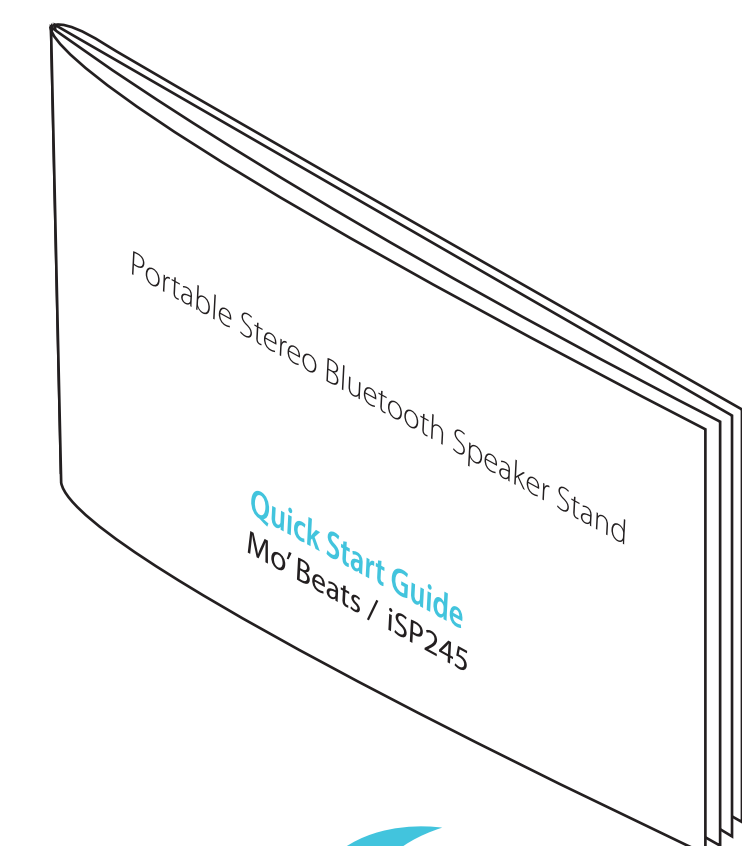
**Quick Start Guide**  
Mo' Beats / iSP245

## Welcome.

iLuv | Innovative Lifestyle  
Unquestionable Value™

### CONTENTS | Portable Stereo Bluetooth Speaker Stand | iSP245

- WHAT'S INCLUDED 3
- CHARGING 4
- PAIRING 5, 6, 7
- WARRANTY 8



#### WHAT'S INCLUDED

Main Unit

Charging Cable

#### CHARGING

Fully Charge Speaker Cradle before First Use

Mini USB Charging Port

- \* Connect included miniUSB cable to the miniUSB port on the iSP245. Connect the other end of the USB cable to your computer or USB adapter (not included) to charge. Charging indicator will turn off when fully charged.
- \* USB AC Adapter not Included

#### PAIRING

Bluetooth Pairing Setting (iPad setting shown, your device settings may vary)

- Go to Settings
- Bluetooth

#### PAIRING

Speaker Cradle

- Switch ON
- LED Light to Pair ON/OFF
- Quick Flashes - Discovery Mode

#### PAIRING

- Successfully Paired

iPad will prompt and provide PIN code. Type PIN code "0000" and enter. iSP245 pairing light will have steady flash when successfully paired.

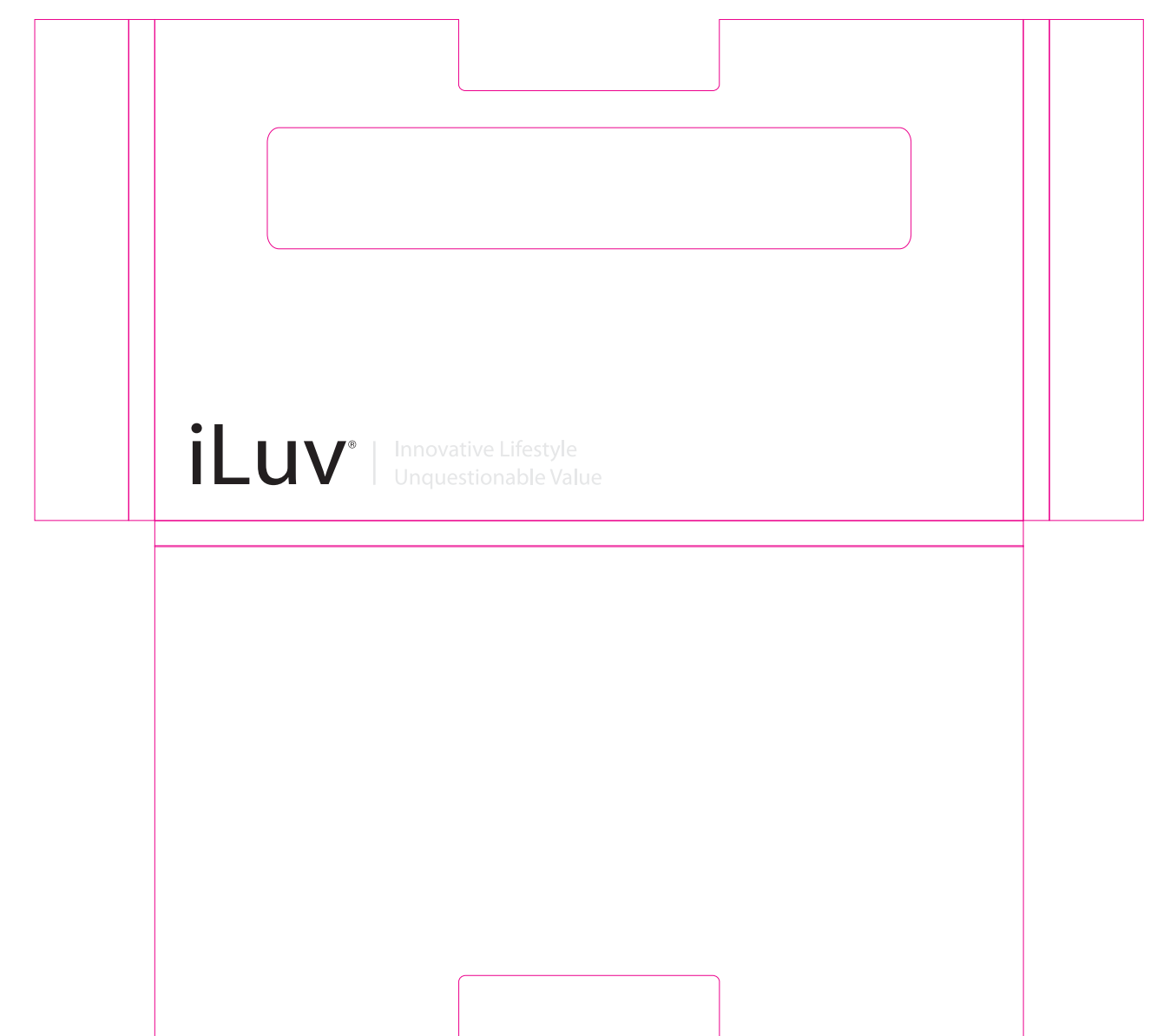
**IMPORTANT**  
In iPad and iPhone Playback Mode, Press **⏮** and Choose "iLuv iSP245"  
\* From iOS5

#### WARRANTY

ONE YEAR LIMITED WARRANTY | UNE GARANTIE LIMITEE D'UN AN  
GARANZIA LIMITADA DE UN ANNO | GARANTIA LIMITADA DE UN ANO  
EINEM JAHR ENGESCHRÄNKTE GARANTIE  
GARANZIA LIMITATA UN ANNO  
1년 한정 보증 | 壹年有限保証 | 一年有限保証  
1年 制限保証 | 1 JAAR VOOR BEPERKTE GARANTIE

EUROPEAN UNION  
TWO YEAR LIMITED WARRANTY | GARANTIE LIMITEE DE DEUX ANS  
GARANZIA LIMITADA DE DOS ANOS | GARANTIA LIMITADA 2 ANOS  
ZWEI JAHREN ENGESCHRÄNKTE GARANTIE  
GARANZIA LIMITADA DUE ANNI  
2년 한정 보증 | 兩年有限保証 | 二年有限保証  
2年 制限保証 | 2 JAAR VOOR BEPERKTE GARANTIE

iLuv®, "Innovative Lifestyle Unquestionable Value™" and "Greenology™" trademarks are the exclusive properties of JWIN Electronics Corp. and are registered with the U.S. Patent and Trademark Office, and may be registered or pending registration in other countries. All other iLuv® trademarks, service marks, and logos may be registered or pending registration in the U.S. or in other countries. All other trademarks or registered trademarks are the property of their respective owners. iPad is a trademark of Apple Inc. registered in the U.S. and other countries. The Bluetooth word mark and logos are owned by Bluetooth SIG, Inc. and any use of such marks by iLuv Creative Technology is under license. © 2012 iLuv Creative Technology.



QSG artwork (Staple binding)  
Paper weight 100g

Sleeve artwork  
Paper weight 150g