

Designed by iLuv in New York

Bluetooth® Wireless Speaker  
with Dual Alarm Clock and Shaker

**Quick Start Guide**  
VibroBlue / IMM157

**Welcome.**

**CONTENTS** Bluetooth® Wireless Speaker with Dual Alarm Clock and Shaker | IMM157

- WHAT'S INCLUDED 3
- POWERING THE DEVICE 4
- SETTING THE CLOCK 5
- SETTING THE ALARM 6,7,8,9
- CHARGING OTHER DEVICES 10
- PAIRING WITH OTHER DEVICES 11,12,13
- WARRANTY 2

**iLuv** Innovative Lifestyle  
Unquestionable Value

**WHAT'S INCLUDED**

**POWERING THE DEVICE**

- Connect adapter to an AC outlet
- Connect other end of adapter to charging port on the back of the device

\*Note: Plugging the device will only put it on Clock mode.

**SETTING THE CLOCK**

- Press "Set"
- Press "+" or "-" to set hour
- Press "OK / II" to confirm
- Repeat steps 2-3 to set minutes
- Press OK / II to complete time setting

**SETTING THE ALARM**

- Press "SET" twice to set Alarm 1 (Three times for Alarm 2)
- Press "+" or "-" to set hour

**SETTING THE ALARM**

- Press "Set" to confirm and proceed to set minutes
- Repeat step 2 to set minutes

**SETTING THE ALARM**

- After setting your minutes, Press "Set" again to enter Alarm mode options
- Press "+" to scroll through different Alarm mode options

\*Note: This device does not wake to Bluetooth

**SETTING THE ALARM**

- Press "Set" to confirm and proceed to set Alarm 2 or press "OK / II" to complete alarm setting
- Press "On" or "Off" to activate or deactivate Alarm 1 / Alarm 2. \*Note: Alarm time will display if activated

**CHARGING OTHER DEVICES**

- Connect your desired charging device to the USB port on the back
- Charge your device (Smartphone not included). \*Note: 1 Amp 5V Output, may not charge all devices

**PAIRING WITH OTHER DEVICES**

- Press "On" to activate to Audio Mode from Clock Mode
- Press "Mode" twice to enter Bluetooth mode
- Bluetooth icon will appear when in Bluetooth source mode

**PAIRING WITH OTHER DEVICES**

- Go to "Settings" / "Bluetooth"
- Turn Bluetooth "On" / Scan for nearby Bluetooth devices
- Wait till "iLuv VibroBlue" appears on your device

**PAIRING WITH OTHER DEVICES**

- Select "iLuv VibroBlue" and allow it to connect
- When paired, your phone will indicate that it is "Connected"

\*If prompted to type in a PIN code, enter "0000"

Successfully Paired!

**WARRANTY**

ONE YEAR LIMITED WARRANTY | LINE GARANTIE LIMITEE VAN GARANTIA LIMITADA DE UN ANO | UNO ANNO DI GARANZIA LIMITATA | GARANZIA LIMITADA DE UN ANO | UN ANNO DI GARANZIA LIMITATA | UN ANNO DI GARANZIA LIMITATA

EUROPEAN UNION | TWO YEAR LIMITED WARRANTY | GARANTIE LIMITEE DE DEUX ANS | GARANTIA LIMITADA DE DOS AÑOS | GARANTIA LIMITADA DE DOS ANOS | GARANTIA LIMITADA DE DOS ANOS | GARANTIA LIMITADA DE DOS ANOS

Please register your product at [www.iLuv.com/reg](http://www.iLuv.com/reg)

iLuv®, Innovative Lifestyle, Unquestionable Value®, and Greenology® trademarks are the exclusive properties of iLuv Electronics Corp. and are registered with the U.S. Patent and Trademark Office, and may be registered or pending registration in other countries. The Bluetooth word mark and logos are owned by Bluetooth SIG, Inc. and any use of such marks by iLuv Creative Technology is under license. All other iLuv® trademarks, service marks, and logos may be registered or pending registration in the U.S. or in other countries. All other trademarks or registered trademarks are the property of their respective owners. iPhone and iPad are trademarks of Apple Inc., registered in the U.S. and other countries. © 2011 iLuv Creative Technology.

# PKG TEAM

**Designer:** Peter Kim

**Product:** IMM157

**Project:** QSG (US)

**Date:** AUG / 24 / 12

**Scale:** 100%

# COMMENTS

**Please do not print this layer!!!**  
• 100% actual size

# SPECIFICATIONS

**Printing information**

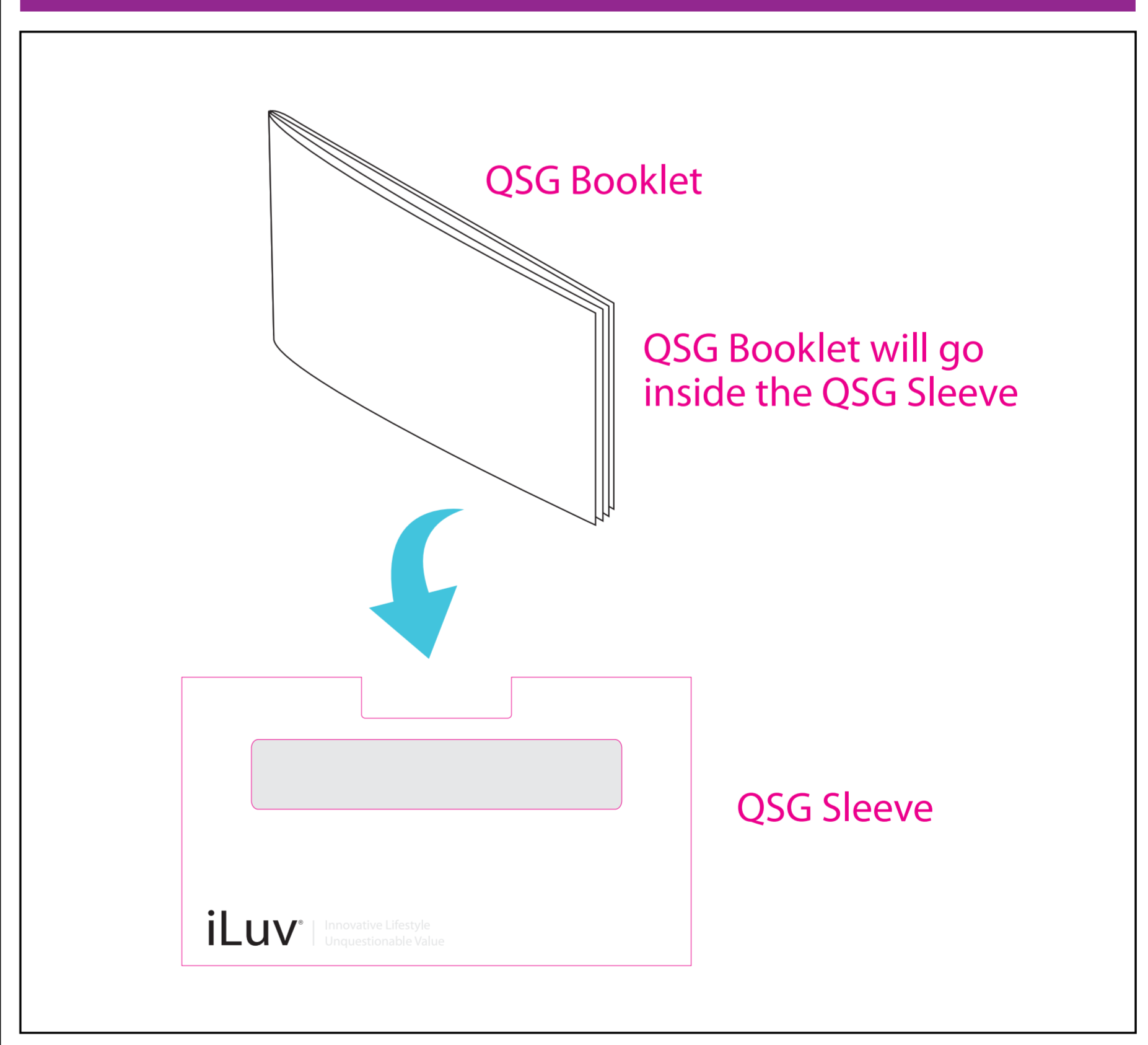
CMYK

iLuv Blue (PMS 311C)

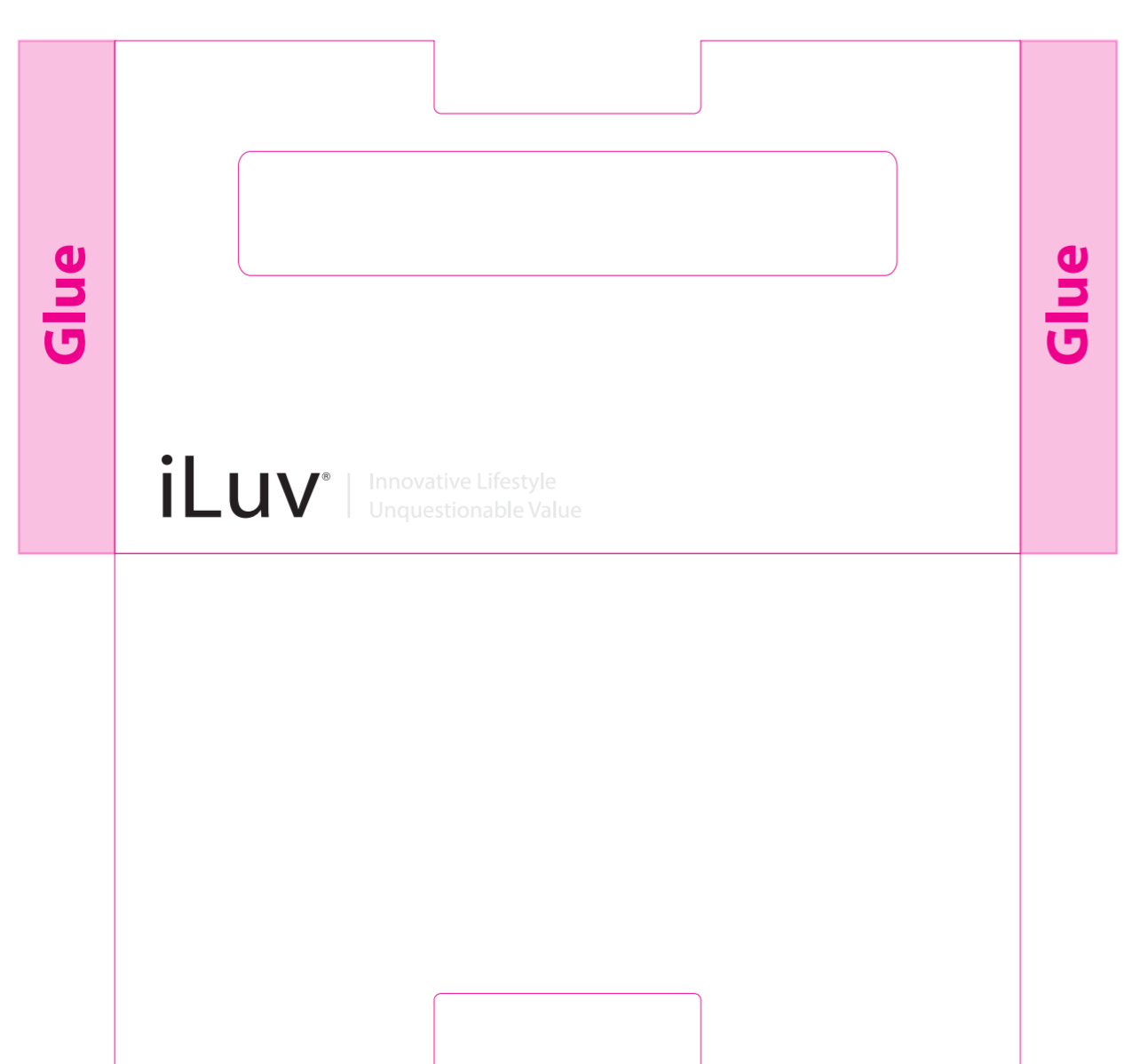
**Sleeve + Specs**

- Sleeve Paper Weight (150g)
- QSG Paper Weight (100g)
- Staple Binding

# QSG DIRECTIONS



# QSG Sleeve



**FCC Statement:**

This device complies with part 15 of the FCC Rules. Operation is subject to the following two conditions: (1) This device may not cause harmful interference, and (2) this device must accept any interference received, including interference that may cause undesired operation.

This equipment has been tested and found to comply with the limits for a Class B digital device, pursuant to part 15 of the FCC Rules. These limits are designed to provide reasonable protection against harmful interference in a residential installation. This equipment generates, uses and can radiate radio frequency energy and, if not installed and used in accordance with the instructions, may cause harmful interference to radio communications. However, there is no guarantee that interference will not occur in a particular installation. If this equipment does cause harmful interference to radio or television reception, which can be determined by turning the equipment off and on, the user is encouraged to try to correct the interference by one or more of the following measures:

- Reorient or relocate the receiving antenna.
- Increase the separation between the equipment and receiver.
- Connect the equipment into an outlet on a circuit different from that to which the receiver is connected.
- Consult the dealer or an experienced radio/TV technician for help.

Caution: Any changes or modifications not expressly approved by the party responsible for compliance could void the user's authority to operate the equipment.