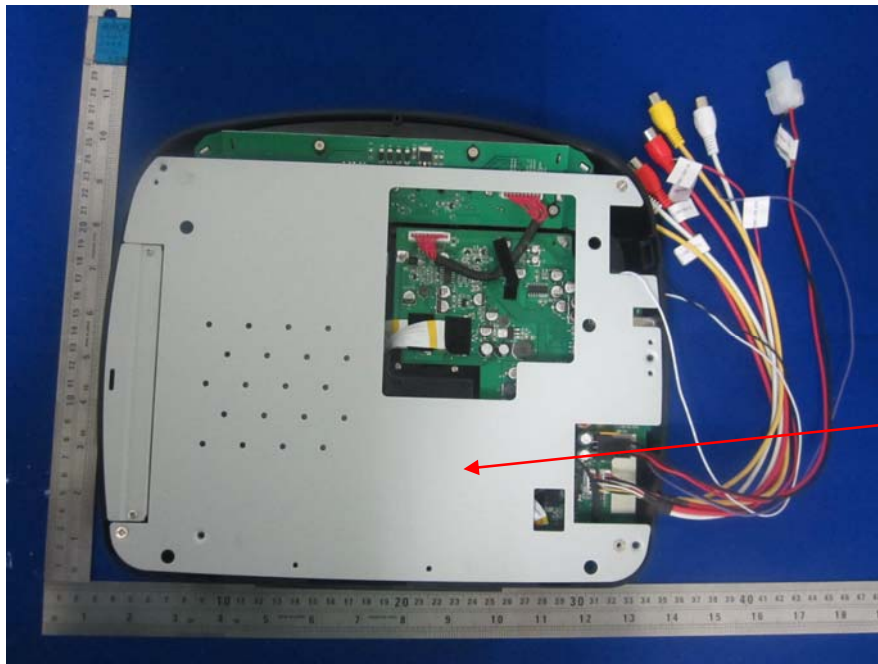


XHIBIT A - FCC ID LABELING AND LOCATION

FCC ID Label

ADVENT ®			150 Marcus Blvd., Hauppauge, NY 11788 Technical Assistance: 1-800-225-6074
MODEL NO. : ADVDLX10			
Power 4 Dome Light 6-Pin Harness			
Connector	Signal Name	Color	
DOME (BLACK)	LAMP-AUTO	VIOLETT	
	LAMP-ON	RED/BLK	
	LAMP-COMMON	BLU/RED	
	POWER-LED-ON	RED	
	POWER-LED-OFF	BLK/GR	
Inspected By : _____			
AV Input 6-Pin Harness			
Connector	Signal Name	Color	
DOME (BLACK)	VIDEO-IN	YELLOW	
	AUDIO-L-IN	WHITE	
	AUDIO-R-IN	RED	
AV Output 6-Pin Harness			
Connector	Signal Name	Color	
DOME (WHITE)	VIDEO-OUT	YELLOW	
	AUDIO-L-OUT	WHITE	
	AUDIO-R-OUT	RED	
			132-7826
Made in China			
<p>This device complies with FCC Rules Part 15. Operation is subject to the following two conditions : (1) This device may not cause harmful interference and (2) This device must accept any interference that may be received, including interference that may cause undesired operation.</p>			
<p>This product is Class 1 Laser Product and complies with FDA Rules 21 CFR Chapter 1, Subchapter J.</p>			
<p>Licensed under one or more of the following patents, Patent NOS. 5,775,762 , 5,927,784 and 6,678,892</p>			
FCC ID : AT19R3ODM21012			

Proposed FCC ID Label Location



FCC ID
Label Here

The label shown shall be permanently affixed at a conspicuous location on the device and be readily visible to the user at the time purchase (Labeling requirements per 2.925)