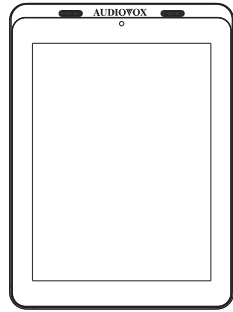
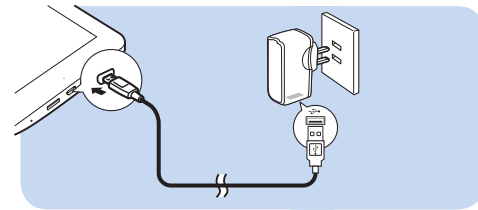


Quick start guide



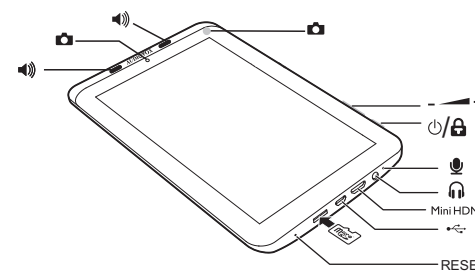
Charge



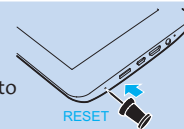
The first time you use the device, use the by-packed power adapter to charge the device for more than eight hours.

Tips: When battery of the device is over-drained, the LCD display may not be turned on due to low battery level even when charger is connected. Charge the device for at least 30 minutes be switch the device on again.

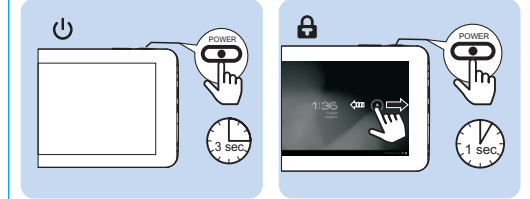
Use



IF Device does not respond to the pressing of keys.



Power/Unlock



FCC Warning

This device complies with part 15 of the FCC Rules. Operation is subject to the following two conditions: (1) This device may not cause harmful interference, and (2) this device must accept any interference received, including interference that may cause undesired operation.

Any Changes or modifications not expressly approved by the party responsible for compliance could void the user's authority to operate the equipment.

Note: This equipment has been tested and found to comply with the limits for a Class B digital device, pursuant to part 15 of the FCC Rules. These limits are designed to provide reasonable protection against harmful interference in a residential installation. This equipment generates uses and can radiate radio frequency energy and, if not installed and used in accordance with the instructions, may cause harmful interference to radio communications. However, there is no guarantee that interference will not occur in a particular installation. If this equipment does cause harmful interference to radio or television reception, which can be determined by turning the equipment off and on, the user is encouraged to try to correct the interference by one or more of the following measures:

- Reorient or relocate the receiving antenna.
- Increase the separation between the equipment and receiver.
- Connect the equipment into an outlet on a circuit different from that to which the receiver is connected.
- Consult the dealer or an experienced radio/TV technician for help.

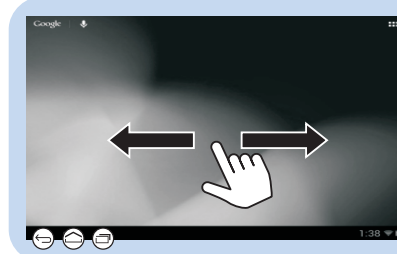
FCC Radiation Exposure Statement:

This transmitter complies with FCC RF radiation exposure limits set forth for an uncontrolled environment.

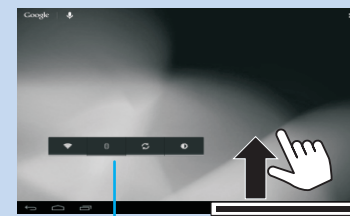
This transmitter must not be co-located or operating in conjunction with any other antenna or transmitter.

Navigate

On the Home screen

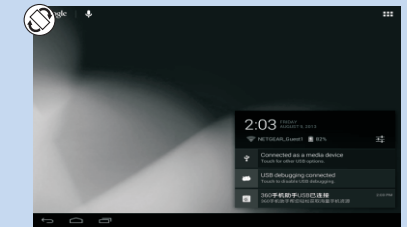


- Go to the Home screen
- Back one level or exit
- Switch to recent applications
- Search in the web or the device



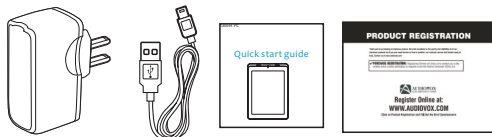
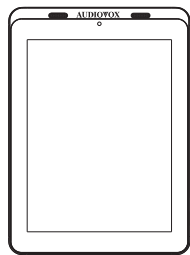
Power control widget:
On/ off switches for Wi-Fi, Bluetooth background sync (for some apps, like mail) and screen brightness.

Find all the apps



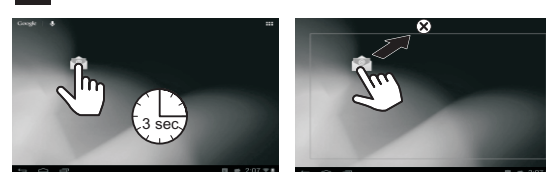
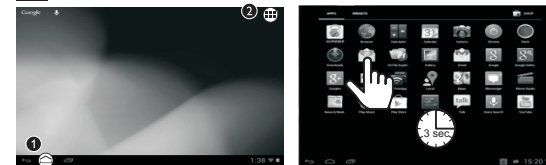
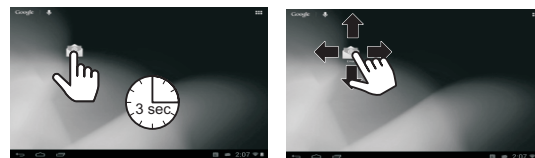
- : Drag up the bottom bar to check events.
- : Switch on or off the screen rotation.

Unpack



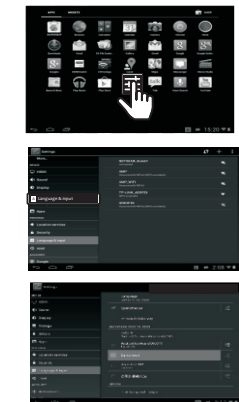
Organize

For quick access, organize icons, shortcuts, and widgets on the pages of Home screen.



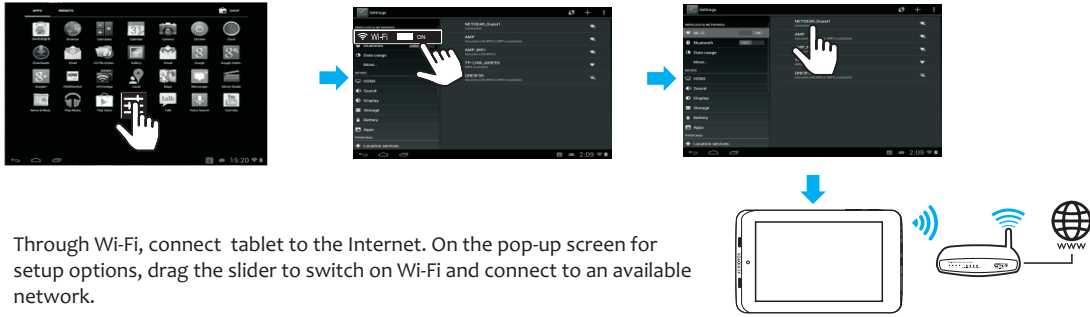
Select languages

Go to the settings menu.



Connect to online service

To select setup options.



Through Wi-Fi, connect tablet to the Internet. On the pop-up screen for setup options, drag the slider to switch on Wi-Fi and connect to an available network.

Why use a Google account

A google account lets you access and organize all your personal information from any computer or mobile device like your Tablet Rear Seat Entertainment Systems

>**Use Google play:** Google play gives you access to all your favorite things: Movies, books, music, magazines, apps, and more.

>**Synchronize and back up:** Allows you to keep your information accessible across all computers and mobile devices.

>**Anywhere:** Check all your personal information from any computer or mobile device. Like your email, calendar or maybe a friend's phone number or address.

>**Keep it safe:** Google works hard to make sure your data is never accessed from unauthorized users, so your data is protected.



Getting Started with the MID System

When prompted, sign in using the email address and password you created for your Google account, if you don't have one yet please create one now.

An email address that you use for any of the following counts as a Google account

>Gmail

>YouTube

>Google Apps

>Adwords

Google play



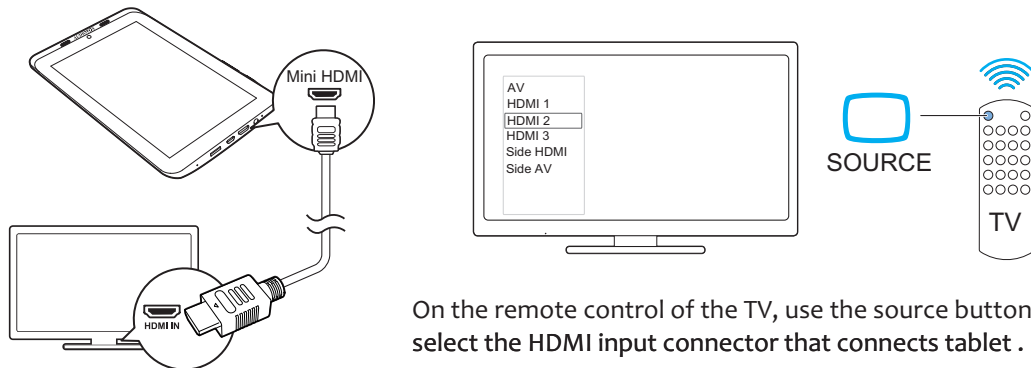
To launch the google play store app, touch the play store icon in your app drawer.

Anything you purchase on google play using you Tablet device will be avialable on any of your Android devices.

Also, if you have made previous Google play purchases they will be available on your tablet device as long as you signed in using the same Gmail address.



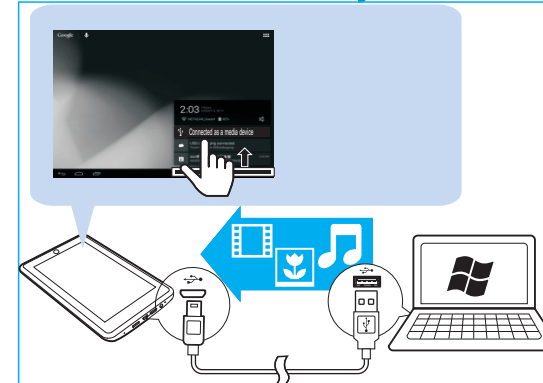
Connect to a High-definition TV (HDTV)



Use an HDMI cable to connect

On the remote control of the TV, use the source button to select the HDMI input connector that connects tablet .

Connect to your PC



Use the USB cable to connect tablet to PC. You can drag and drop apps and media files between tablet and PC.

Warranty

