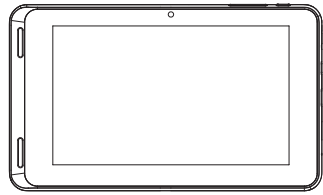


# Quick start guide



## Charge

The first time you use the device, use the by-packed power adapter to charge the device for more than eight hours.

Tips: When battery of the device is over-drained, the LCD display may not be turned on due to low battery level even when charger is connected. Charge the device for at least 30 minutes be switch the device on again.

## Use

IF Device does not respond to the pressing of keys.

# FCC Warning

This device complies with part 15 of the FCC Rules. Operation is subject to the following two conditions: (1) This device may not cause harmful interference, and (2) this device must accept any interference received, including interference that may cause undesired operation.

Any Changes or modifications not expressly approved by the party responsible for compliance could void the user's authority to operate the equipment.

**Note:** This equipment has been tested and found to comply with the limits for a Class B digital device, pursuant to part 15 of the FCC Rules. These limits are designed to provide reasonable protection against harmful interference in a residential installation. This equipment generates uses and can radiate radio frequency energy and, if not installed and used in accordance with the instructions, may cause harmful interference to radio communications. However, there is no guarantee that interference will not occur in a particular installation. If this equipment does cause harmful interference to radio or television reception, which can be determined by turning the equipment off and on, the user is encouraged to try to correct the interference by one or more of the following measures:

- Reorient or relocate the receiving antenna.
- Increase the separation between the equipment and receiver.
- Connect the equipment into an outlet on a circuit different from that to which the receiver is connected.
- Consult the dealer or an experienced radio/TV technician for help.

FCC Radiation Exposure Statement:  
This equipment complies with FCC RF radiation exposure limits set forth for an uncontrolled environment.  
This transmitter must not be co-located or operating in conjunction with any other antenna or transmitter.

## Navigate

### On the Home screen

Swipe left/right to select a page

- Go to the Home screen
- Back one level or exit
- Switch to recent applications
- Search in the web or the device

Power control widget:  
On/ off switches for Wi-Fi, background sync (for some apps, like mail) and screen brightness.

Drag up the bottom bar to check events.

## Unpack

## Organize

For quick access, organize icons, shortcuts, and widgets on the pages of Home screen.

## Select languages

Go to the settings menu.

## Connect to online service

To select setup options.



Through Wi-Fi, connect Tablet to the Internet. On the pop-up screen for setup options, drag the slider to switch on Wi-Fi and connect to an available network.

## Why use a Google account

A google account lets you access and organize all your personal information from any computer or mobile device like your Tablet Rear Seat Entertainment System.

>**Use Google play:** Google play gives you access to all your favorite things: Movies, books, music, magazines, apps, and more.

>**Synchronize and back up:** Allows you to keep your information accessible across all computers and mobile devices.

>**Anywhere:** Check all your personal information from any computer or mobile device. Like your email, calendar or maybe a friend's phone number or address.

>**Keep it safe:** Google works hard to make sure your data is never accessed from unauthorized users, so your data is protected.



## Getting Started with the System

When prompted, sign in using the email address and password you created for your Google account, if you don't have one yet please create one now.

An email address that you use for any of the following counts as a Google account

>Gmail

>Google Apps

>YouTube

>Adwords

## Google play



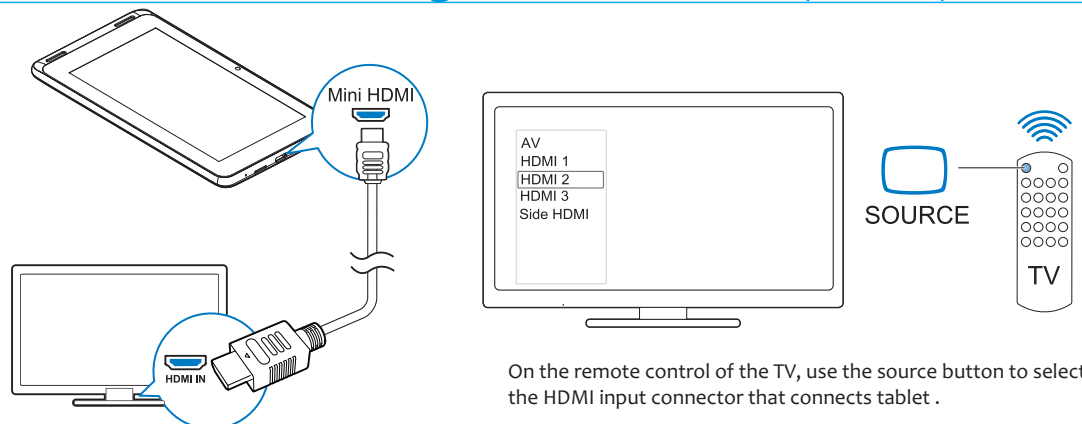
To launch the google play store app, touch the play store icon in your app drawer.

Anything you purchase on google play using your tablet device will be available on any of your Android devices.

Also, if you have made previous Google play purchases they will be available on your device as long as you signed in using the same Gmail address.



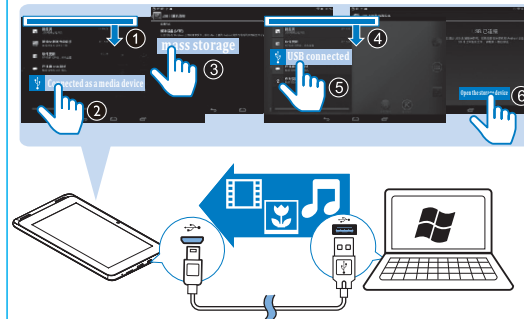
## Connect to a High-definition TV (HDTV)



On the remote control of the TV, use the source button to select the HDMI input connector that connects tablet.

Use an HDMI cable to connect tablet with an HDTV.

## Connect to your PC



Use the USB cable to connect tablet to PC. You can drag and drop apps and media files between tablet.

## Warranty

**AUDIOVOX LIMITED WARRANTY**  
Applies to Audiovox Tablet Products

**AUDIOVOX**

AUDIOVOX ELECTRONICS CORP. (the Company) warrants to the original retail purchaser of this product that, should this product or any part thereof (except game controllers), under normal use and conditions, be proven defective in material or workmanship within 12 months from the date of original purchase, such defect(s) will be repaired or replaced with reconditioned product (at the Company's option) without charge for parts and repair labor.

To obtain repair or replacement within the terms of this Warranty, the product is to be delivered with proof of warranty coverage (e.g. dated bill of sale, specification of defect(s), transportation prepaid, to the Company at the address shown below. This Warranty does not extend to the elimination of externally generated static or noise, to correction of antenna problems, to costs incurred for installation, removal or reinstallation of the product, or to damage to digital memory/media devices, gaming devices, disc, speakers, accessories, or vehicle electrical systems.

This Warranty does not apply to any product or part thereof which, in the opinion of the Company, has suffered or been damaged through alteration, improper installation, misbranding, misuse, neglect, accident, or by removal or replacement of the factory serial number/bar code label(s). THE EXTENT OF THE COMPANY'S LIABILITY UNDER THIS WARRANTY IS LIMITED TO THE REPAIR OR REPLACEMENT PROVIDED ABOVE AND, IN NO EVENT, SHALL THE COMPANY'S LIABILITY EXCEED THE PURCHASE PRICE PAID BY PURCHASER FOR THE PRODUCT.

This Warranty is in lieu of all other express warranties or liabilities. ANY IMPLIED WARRANTIES, INCLUDING ANY IMPLIED WARRANTY OF MERCHANTABILITY, SHALL BE LIMITED TO THE DURATION OF THIS WRITTEN WARRANTY. ANY ACTION FOR BREACH OF ANY WARRANTY HEREUNDER INCLUDING ANY IMPLIED WARRANTY OF MERCHANTABILITY MUST BE BROUGHT WITHIN A PERIOD NOT EXCEEDING 12 MONTHS AFTER EXPIRATION OF THIS OR ANY OTHER WARRANTY. IN NO CASE SHALL THE COMPANY BE LIABLE FOR ANY CONSEQUENTIAL OR INCIDENTAL DAMAGES FOR BREACH OF THIS OR ANY OTHER WARRANTY. No person or representative is authorized to assume for the Company any liability other than expressed herein in connection with the sale of this product.

Some states do not allow limitations on how long an implied warranty lasts or the exclusion or limitation of incidental or consequential damage so the above limitations or exclusions may not apply to you. This Warranty gives you specific legal rights and you may also have other rights which vary from state to state.

Audiovox Electronics Corporation, 150 Marcus Blvd., Hauppauge, New York 11788 | 1-800-645-4994 128-xxxxxx