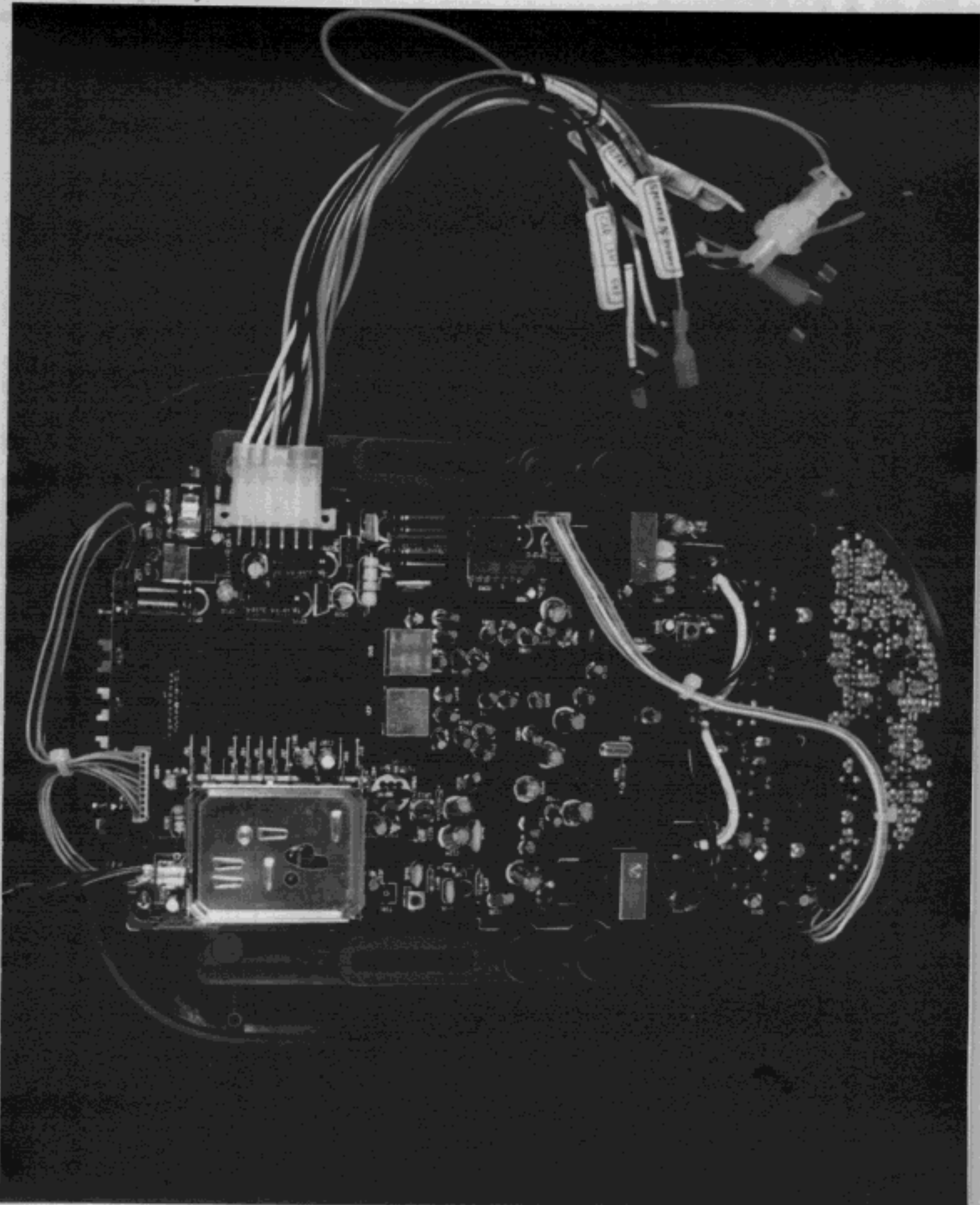
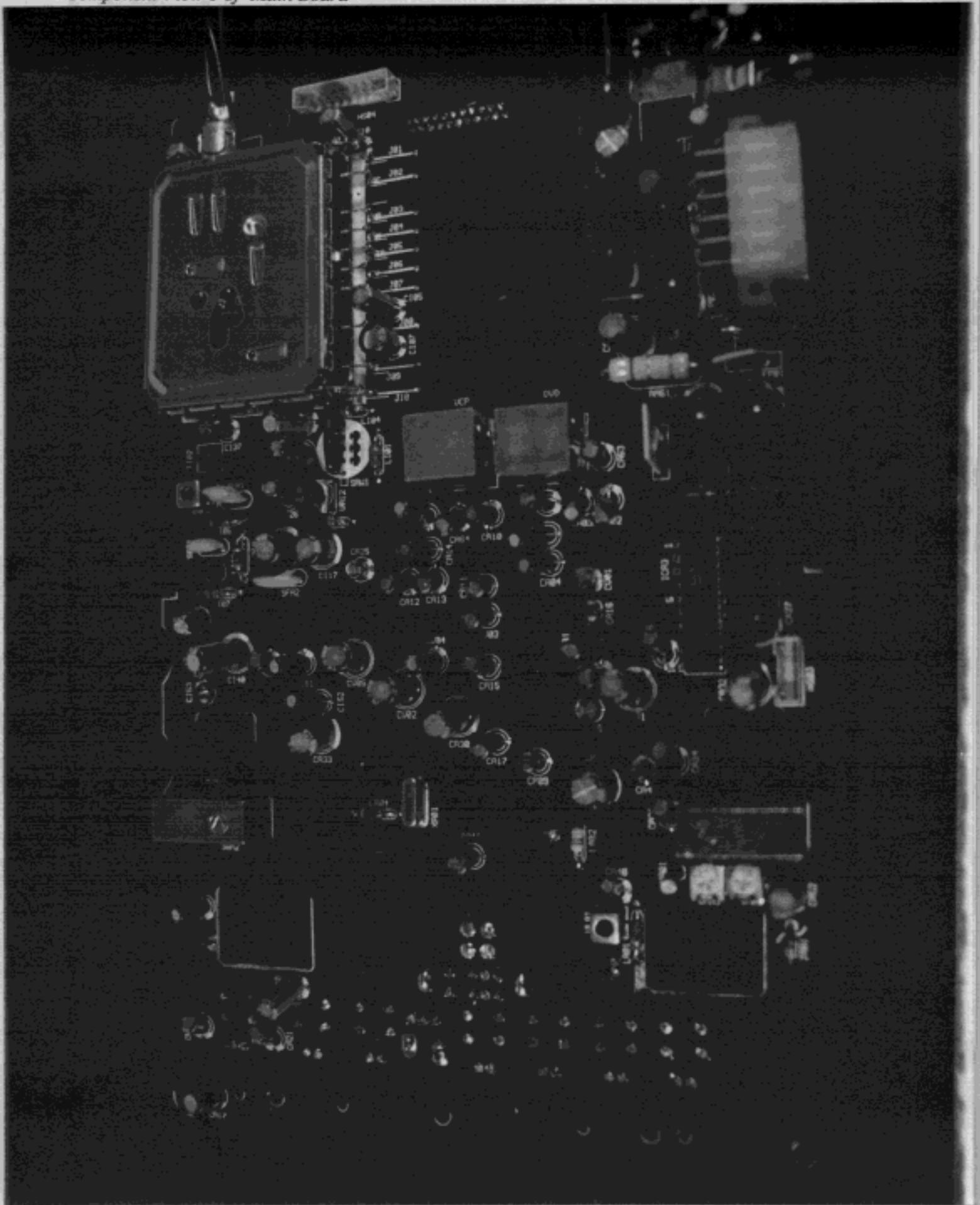


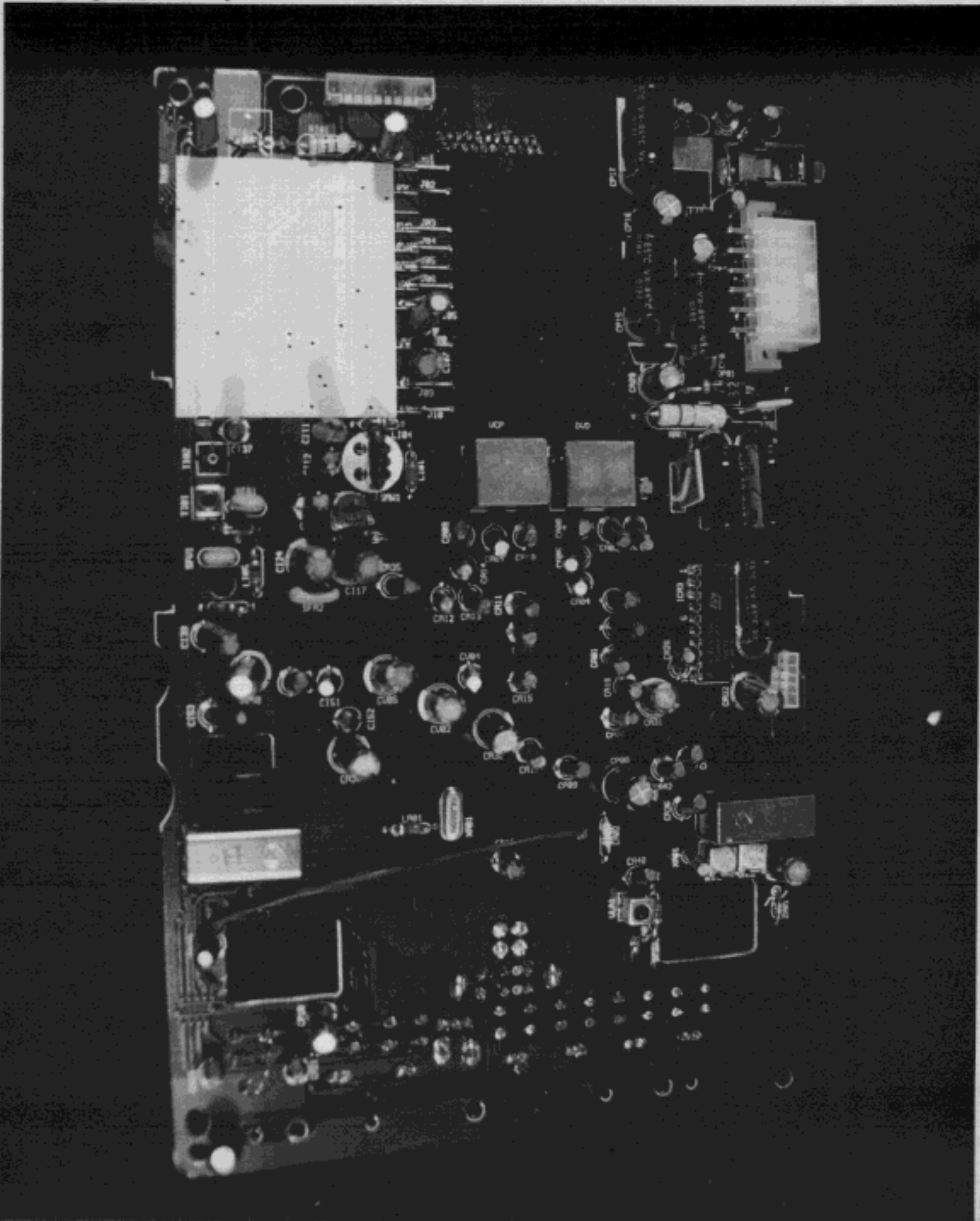
Internal View of EUT



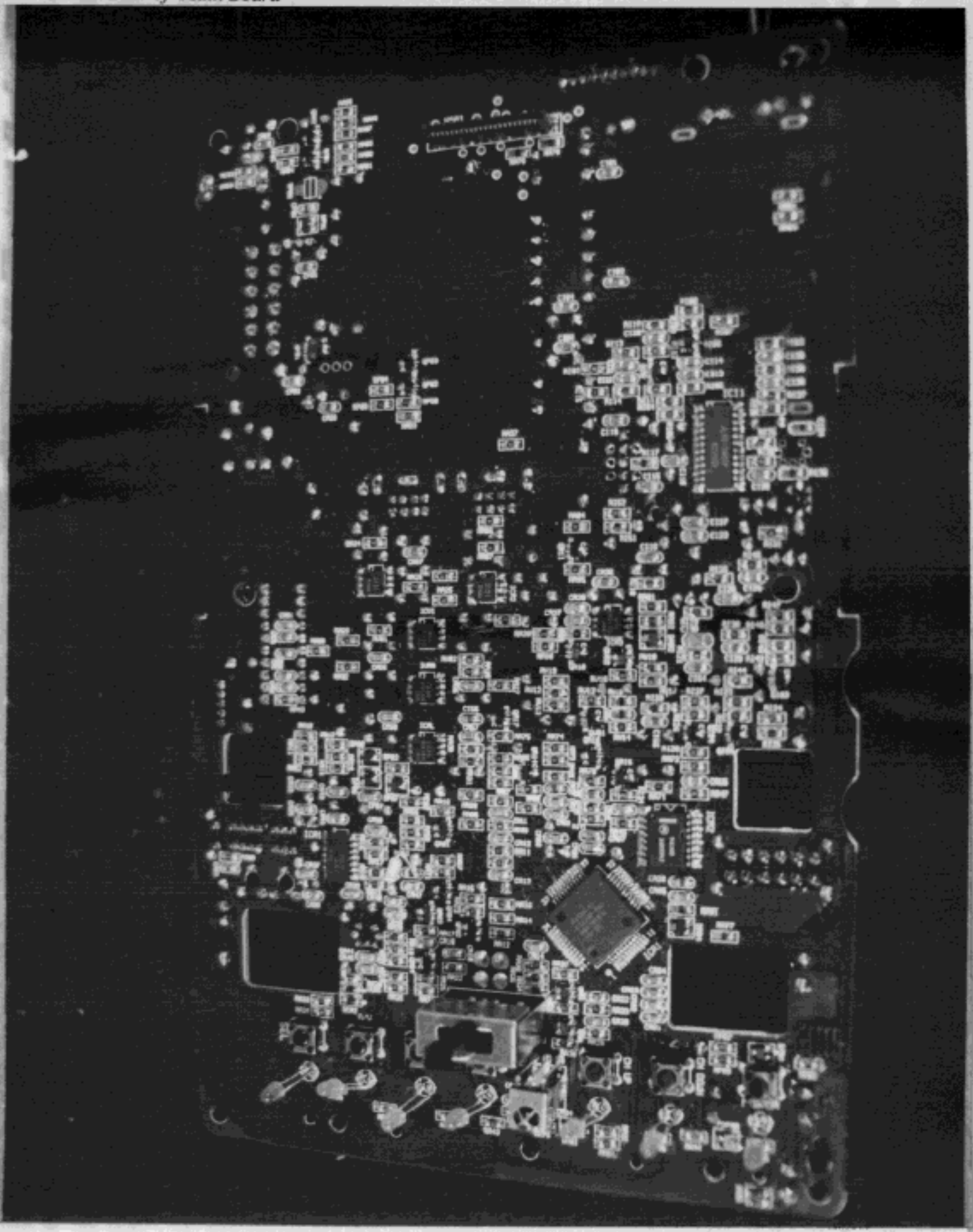
Component View 1 of Main Board



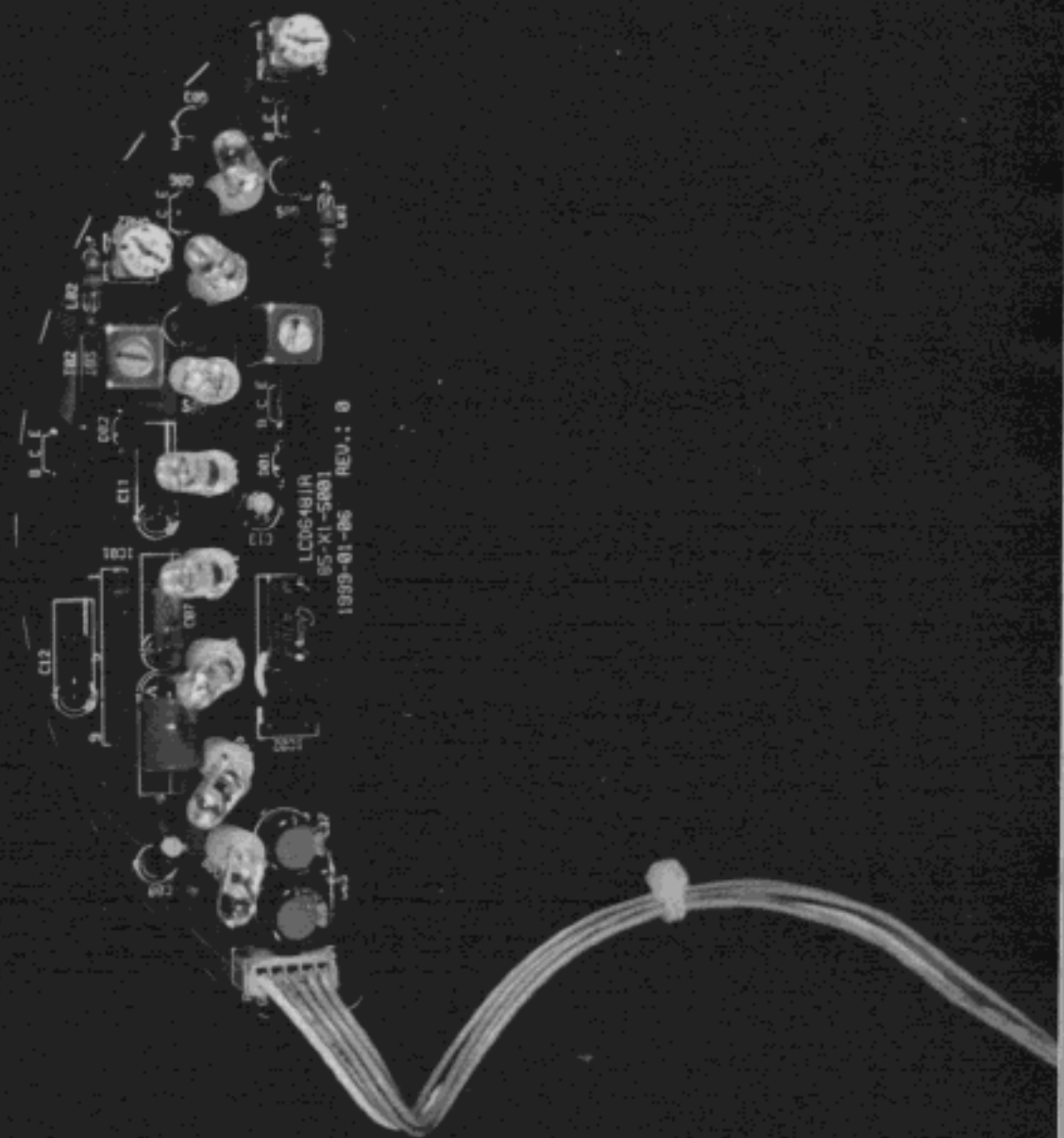
Component View 2 of Main Board



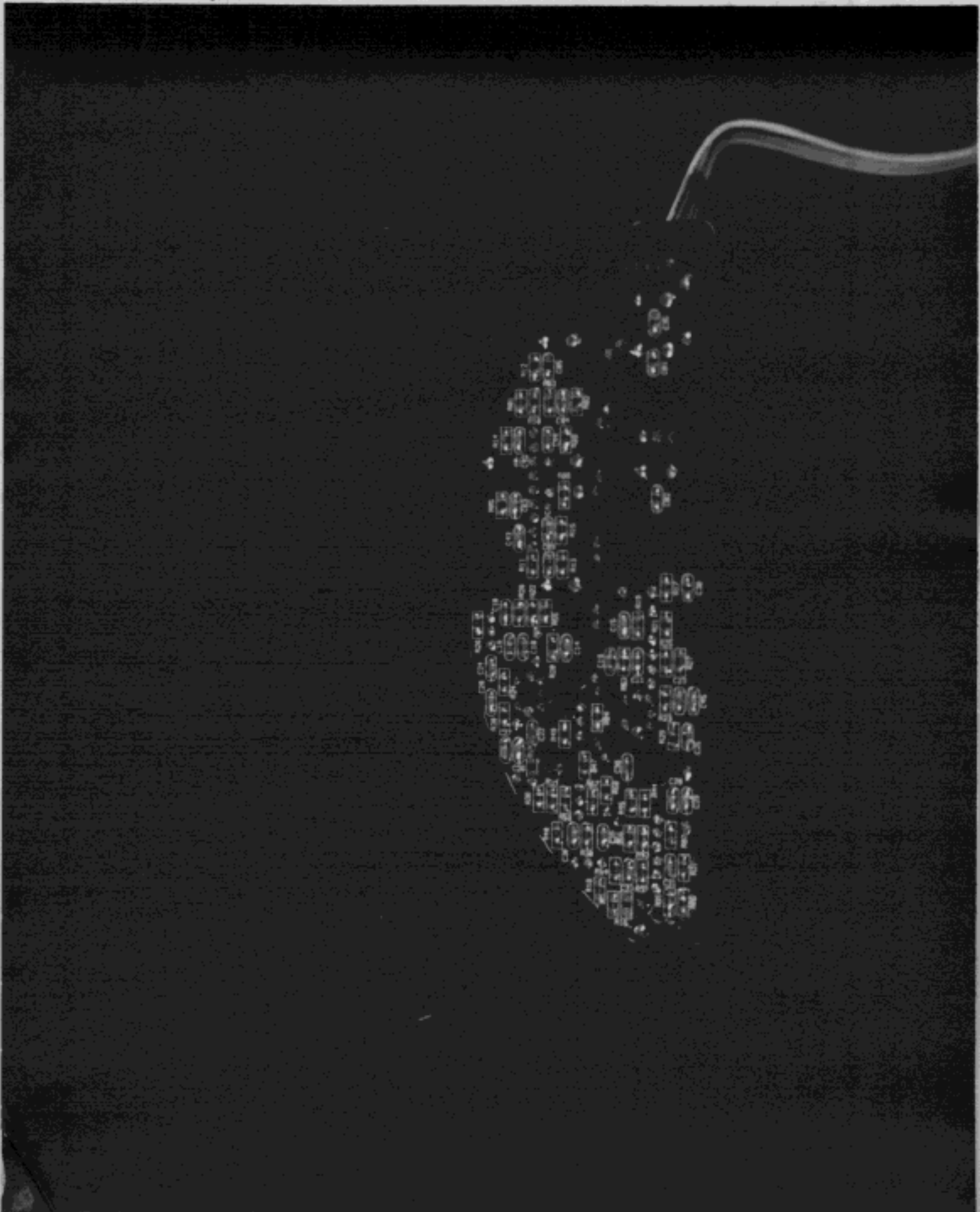
Solder View of Main Board



One Side View of PCB 1

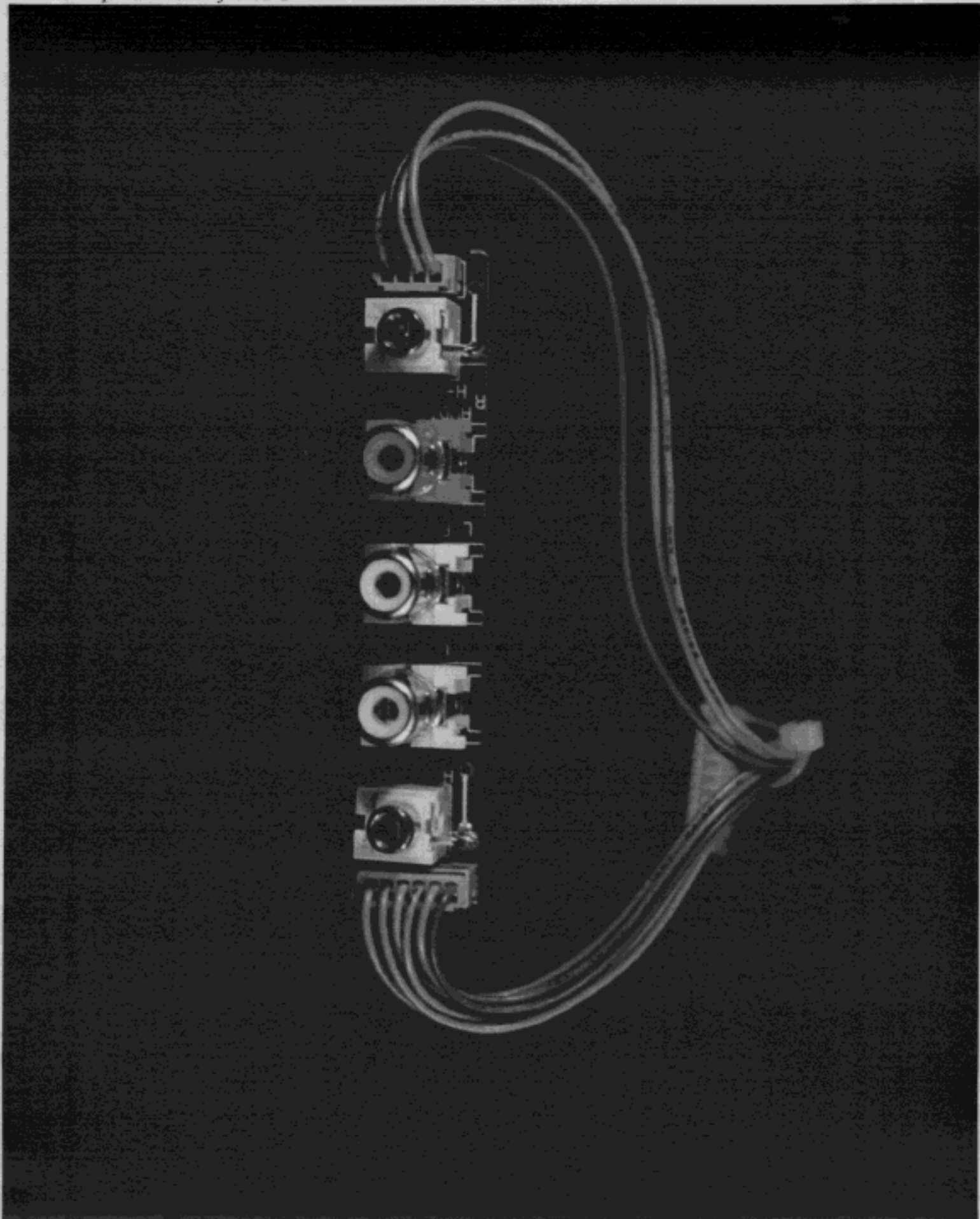


Other Side View of PCB 1

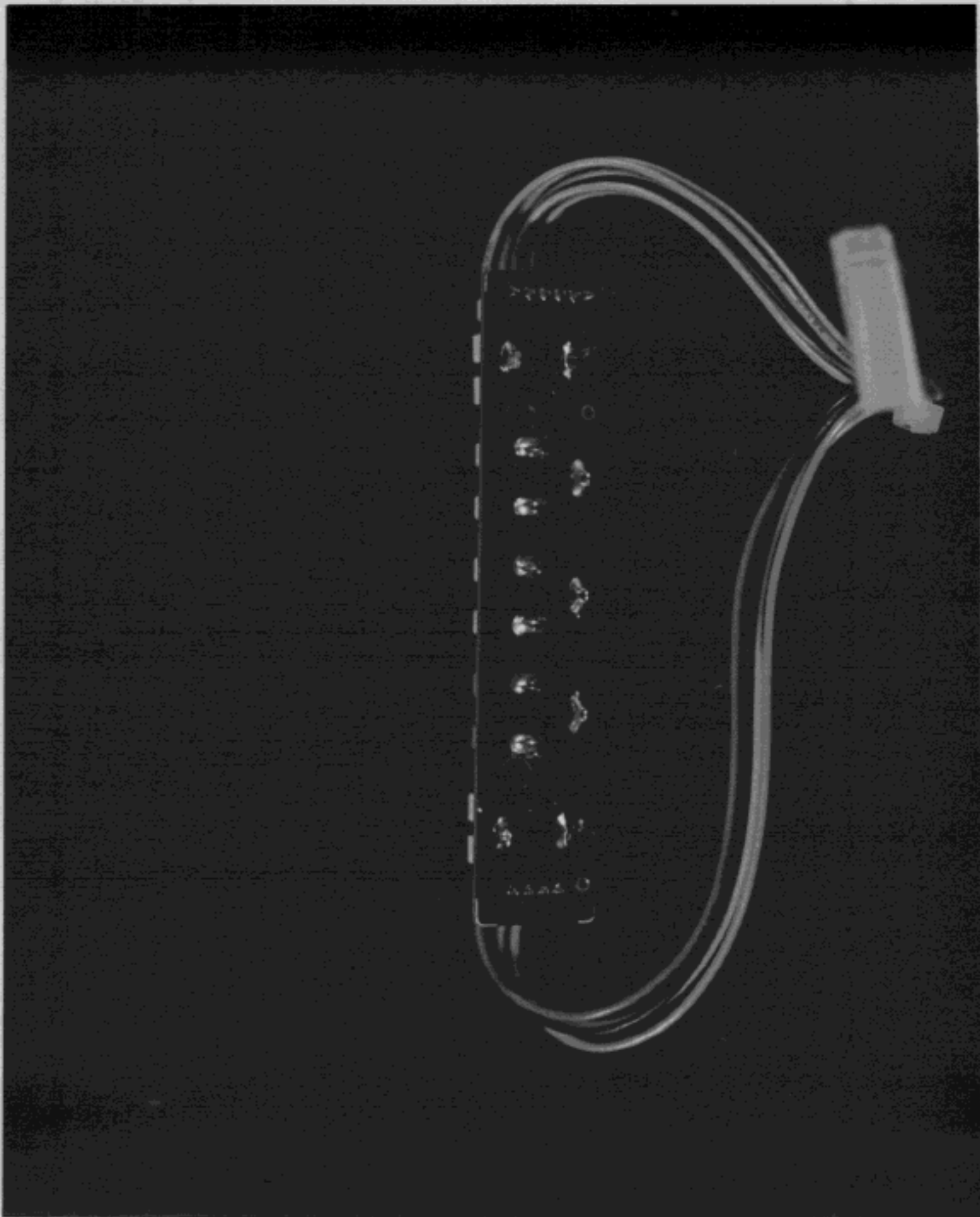




Component View of PCB 2

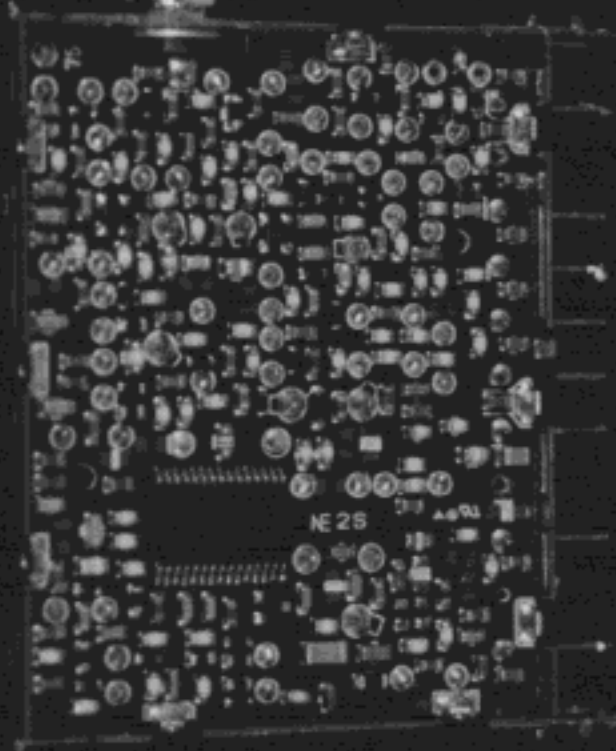


Solder View of PCB 2





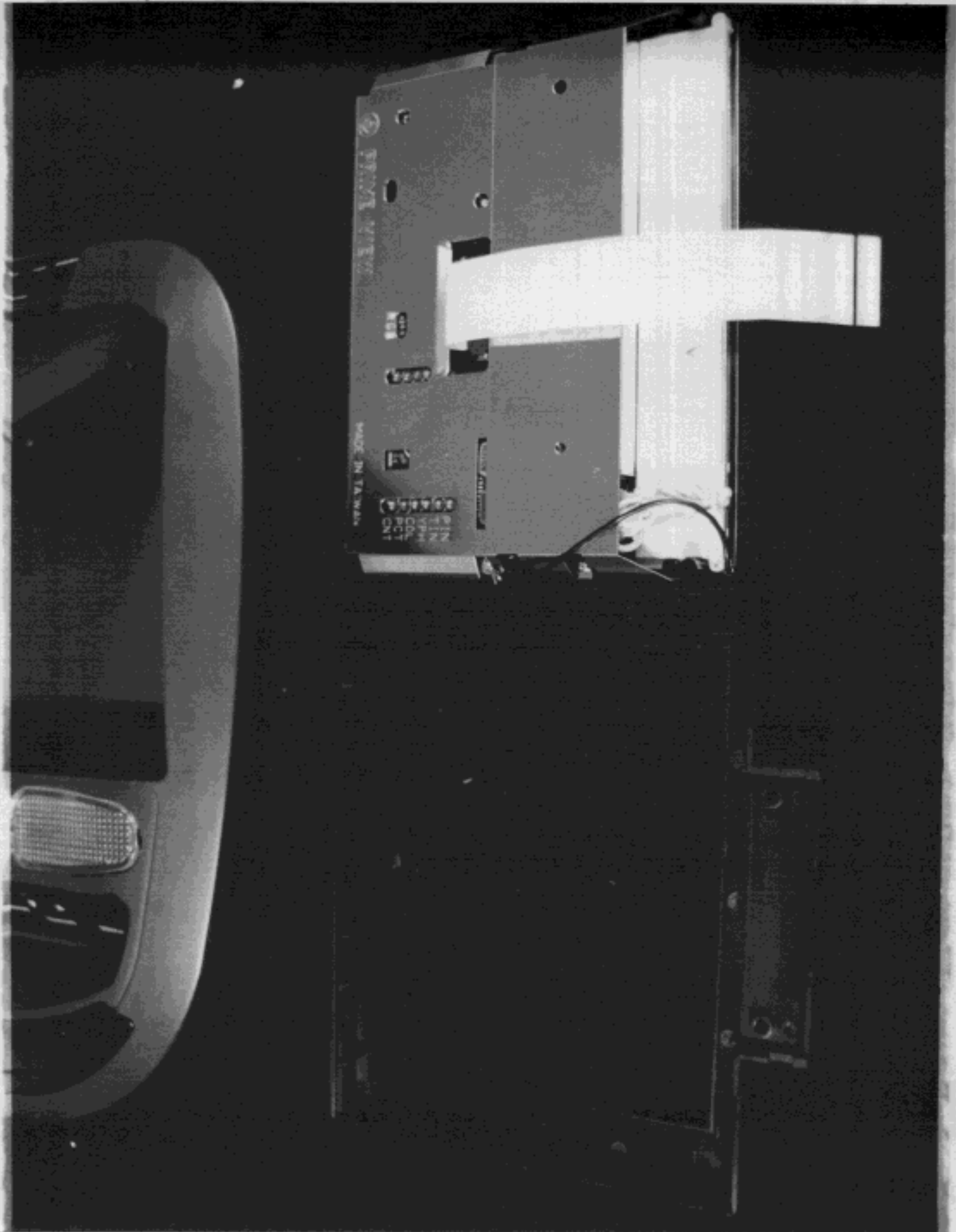
One Side View of RF Board



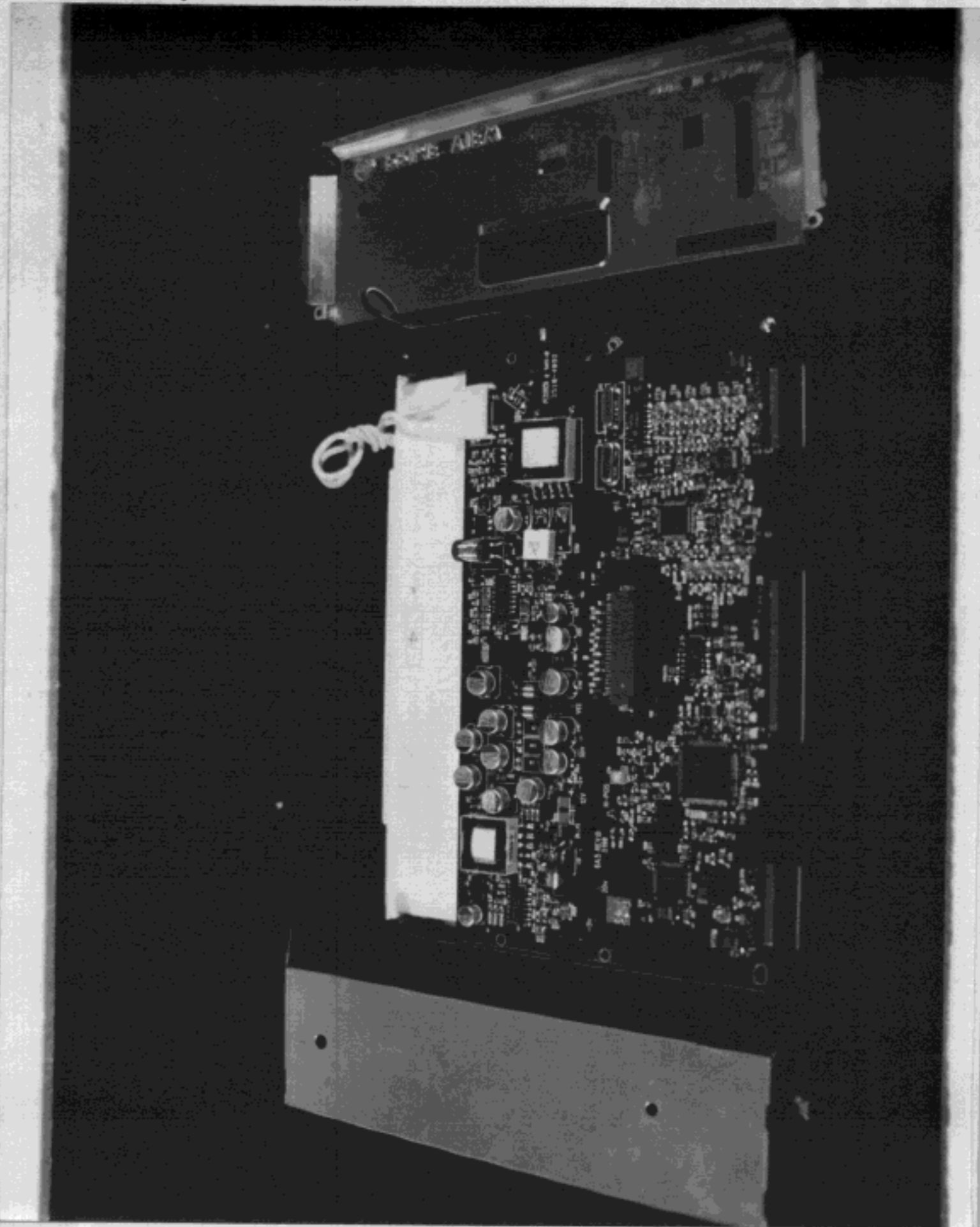
Other Side View of RF Board



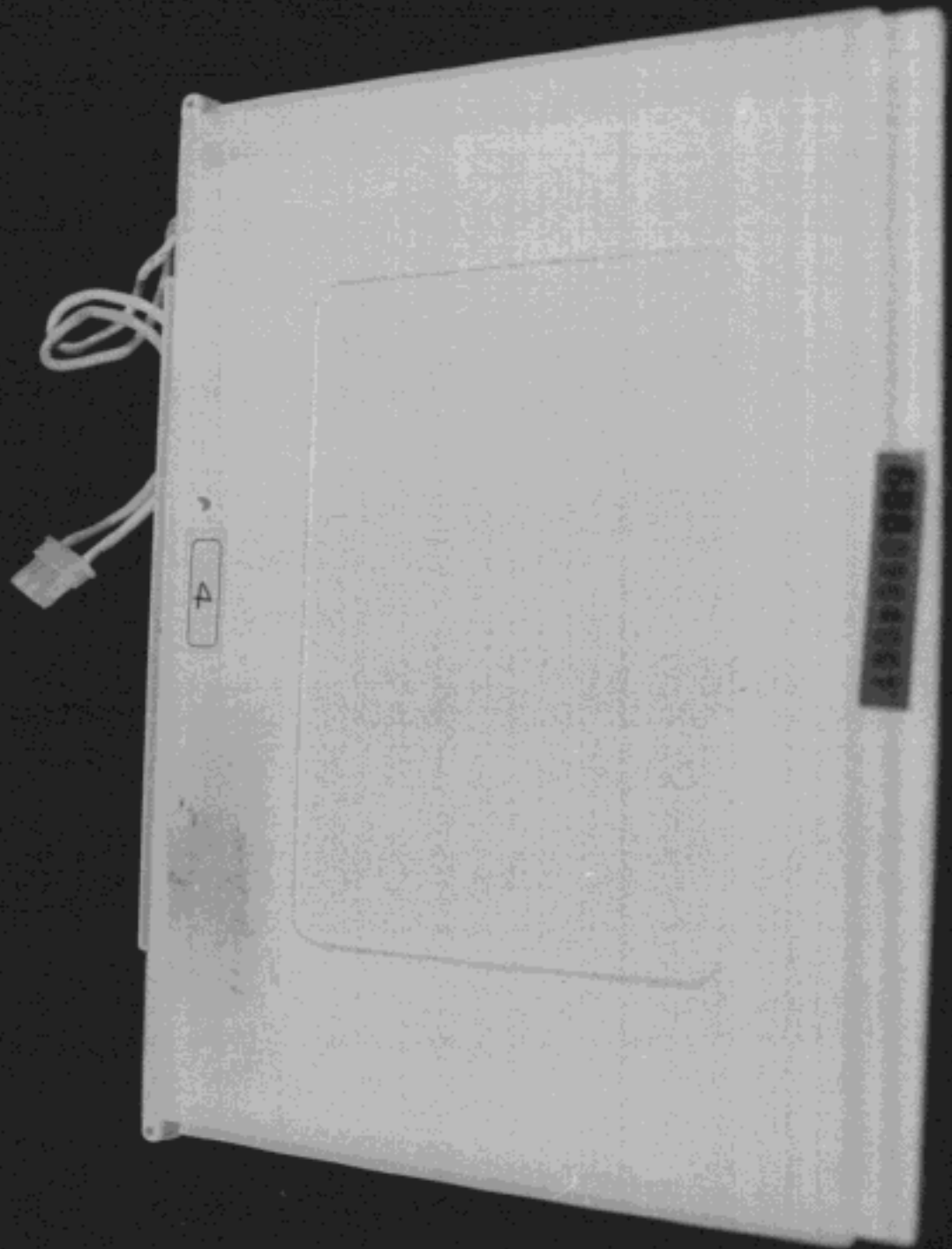
Rear View of LCD Panel Module



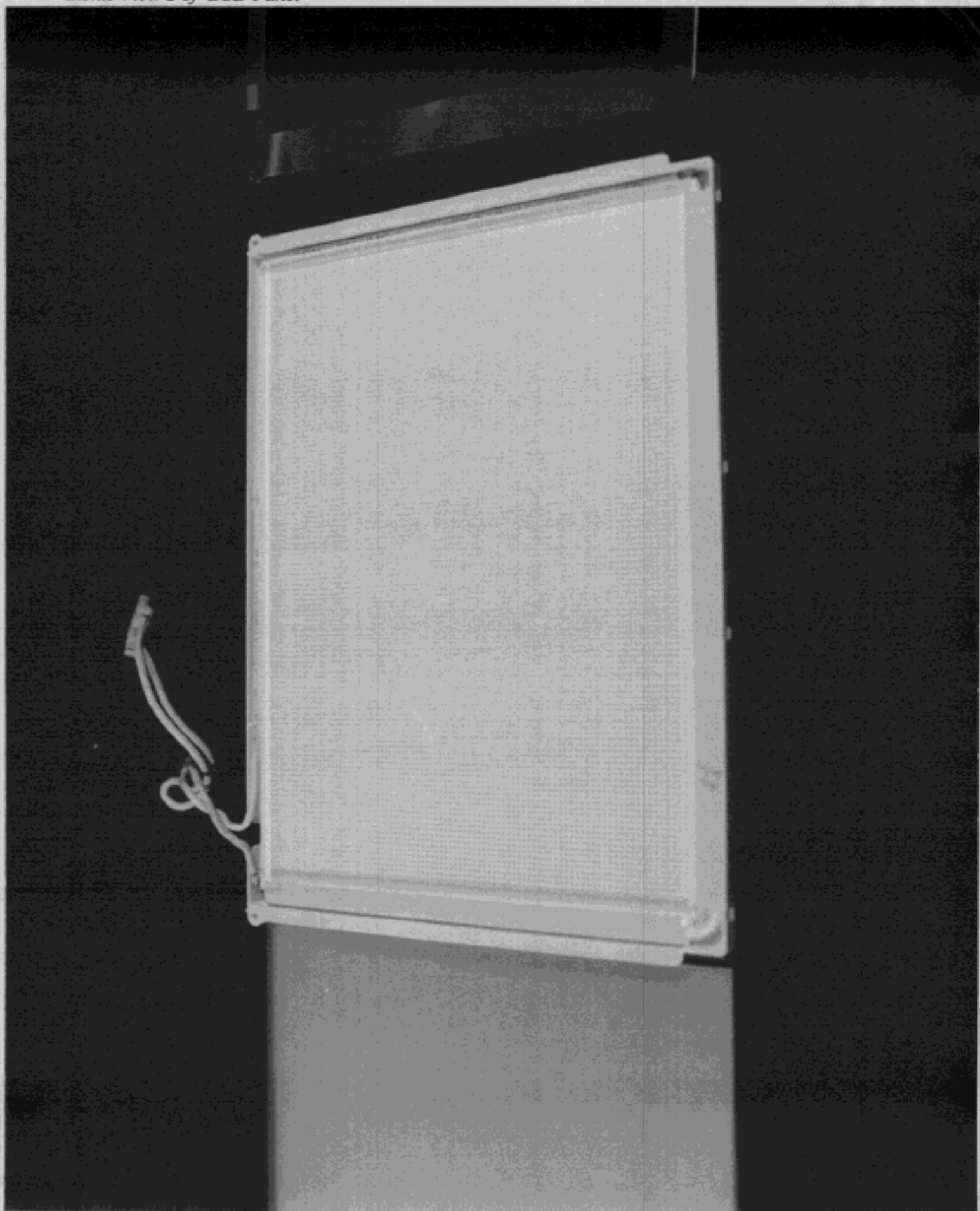
Intrnal View of LCD Panel Module



Inside View 1 of LCD Panel

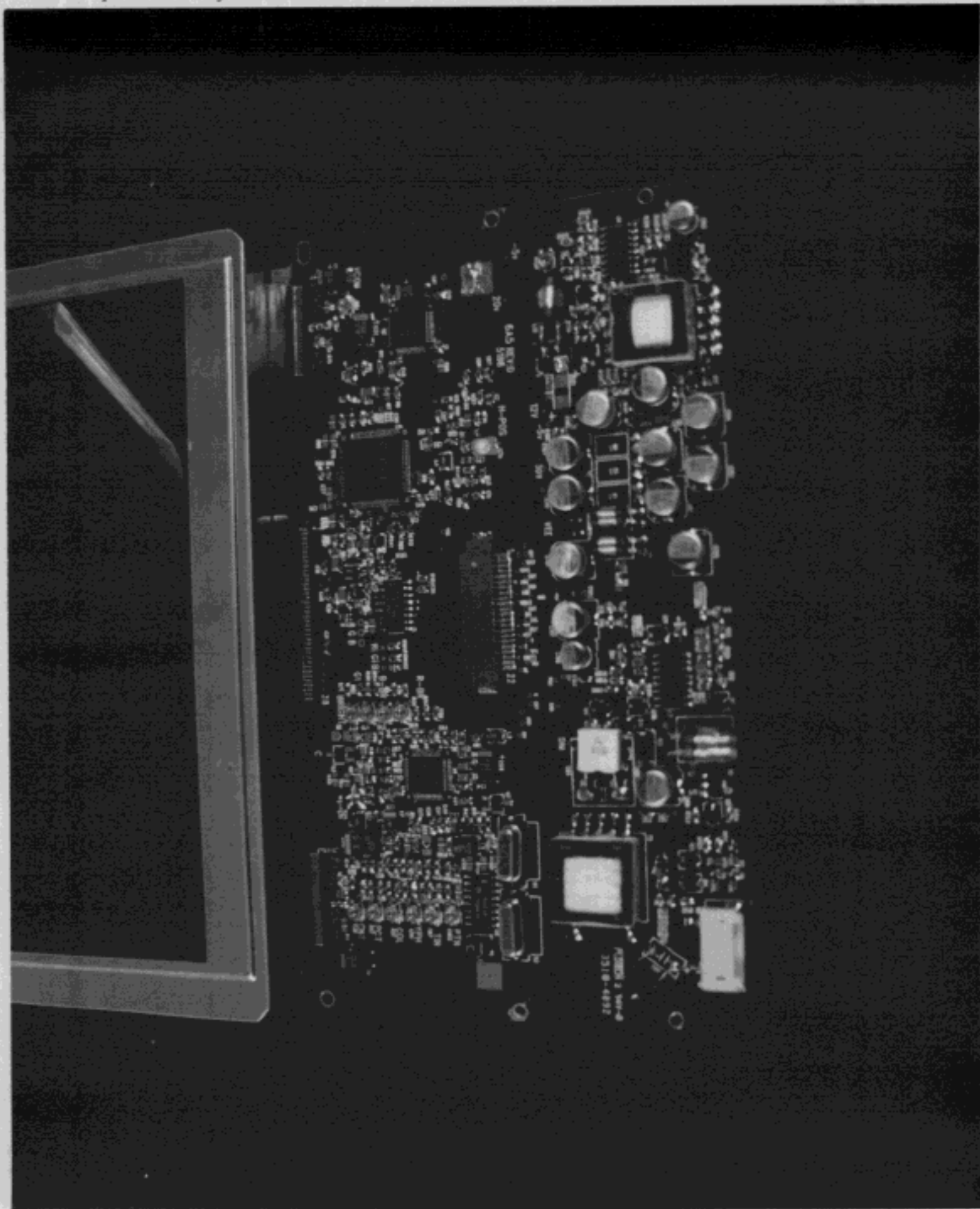


Inside View 2 of LCD Panel





Component View of LCD Board



Solder View of LCD Board

