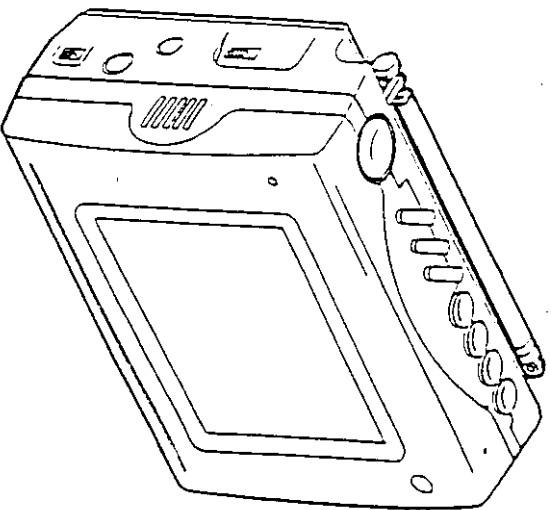




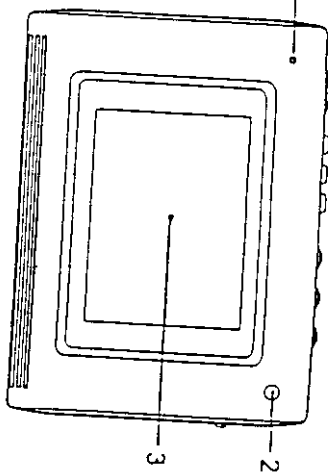
WHISTLER
ENHANCED DRIVING TOOLS

LCD-5040 (C0405DC)
4" TFT-LCD COLOR TV

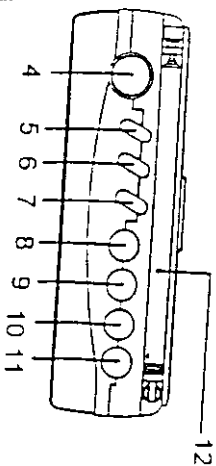


INSTRUCTION MANUAL

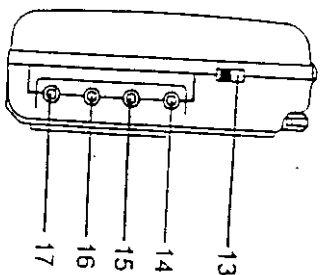
FUNCTION



- FIG. 1 FRONT
1. POWER INDICATOR
 2. REMOTE CONTROL SENSOR
 3. SCREEN



- FIG. 2 TOP
4. POWER ON / STAND BY key
 5. AUTO PROGRAM key
 6. TV / AV1 / AV2 key
 7. PICTURE SELECT key
 8. VOLUME DOWN key
(PICTURE SELECT DOWN)
 9. VOLUME UP key
(PICTURE SELECT UP)
 10. CHANNEL DOWN key
 11. CHANNEL UP key
 12. ROD ANTENNA



- FIG. 3 RIGHT
13. TRANSMITTER OFF/FM1/FM2 Switch
 14. ANTENNA jack
 15. AV1 INPUT jack
 16. AV2 INPUT jack
 17. EARPHONE jack

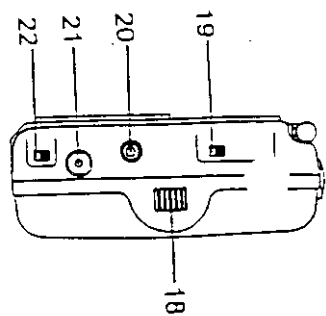


FIG. 4 LEFT

- 18. SPEAKER
- 19. BACKLIGHT HIGH /LOW switch
- 20. DIVERSITY OUTPUT jack
- 21. DC INPUT jack
- 22. POWER ON / OFF switch

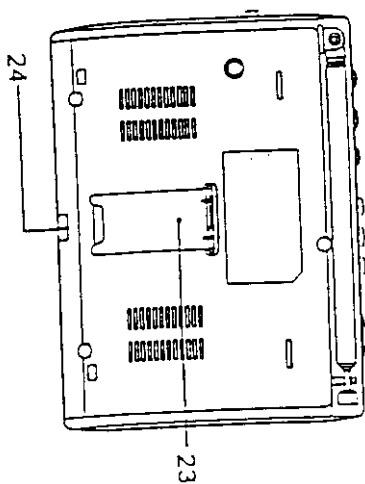


FIG. 5 BACK

- 23. STAND
- 24. FIXING NUT

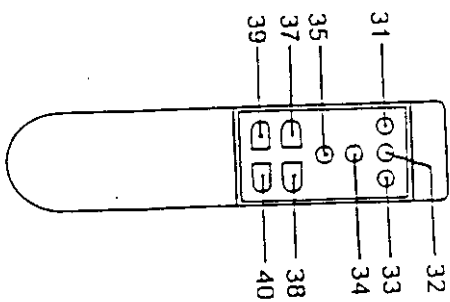


FIG. 6 REMOTE CONTROL UNIT

- 31. POWER ON / STAND BY key
- 32. AUDIO MUTE key
- 33. TV / AV1 / AV2 key
- 34. AUTO PROGRAM key
- 35. PICTURE SELECT key
- 37. VOLUME DOWN key
(PICTURE SELECT DOWN)
- 38. VOLUME UP key
(PICTURE SELECT UP)
- 39. CHANNEL DOWN key
- 40. CHANNEL UP key

INSTALLATION

POWER

1. One of the following power sources can be used.
 - 1) AC power adaptor.
 - 2) Car battery (with car cord connected).
 - 3) 8×UM-3 batteries (optional battery box used). For longer operation time, the alkaline batteries are recommended and move the BACKLIGHT HIGH / LOW switch (19) to "LO" for power saving.
2. Move the POWER ON / OFF switch (22) to "ON" to make the TV unit at stand-by status. At this time the POWER INDICATOR(1) lights up. Then the remote control unit can work.
3. Press the POWER ON / STAND BY key(4,31) to turn on the TV unit and lighten the screen. The POWER INDICATOR(1) is brighter. Pressing the key(4,31) again will recover the TV unit to stand by.

BACK LIGHT

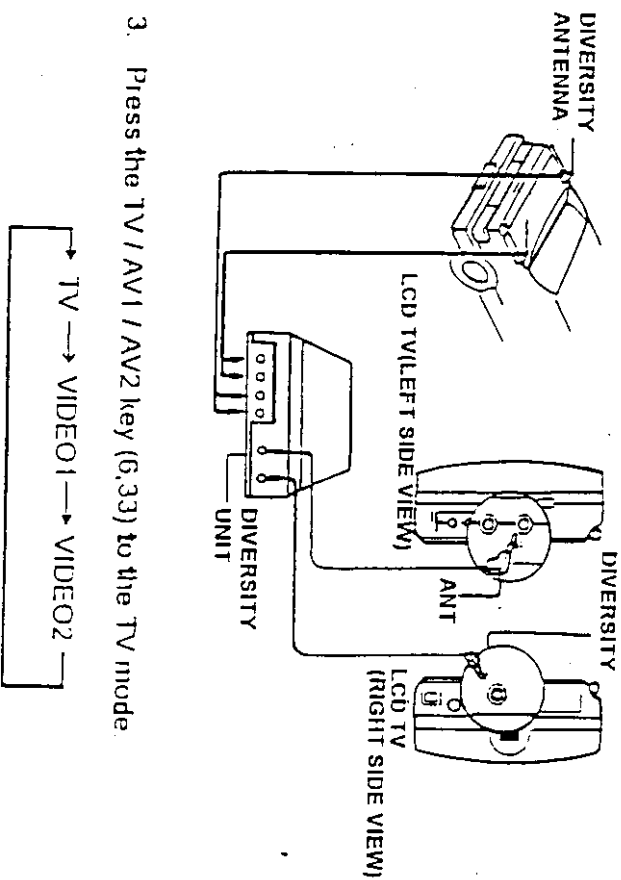
1. Move the BACKLIGHT HIGH / LOW switch (19) to "H" for normal use.
2. For battery power saving, move the switch to "LO". The luminance of the screen will lower down.

FM TRANSMITTER

1. Move the TRANSMITTER OFF/FM1/FM2 switch (13) to "FM1" (or "FM2").
2. Turn on the FM Radio and set the same channel frequency to receive FM 1 (or FM 2) signal. The efficiency distance is about 5m.
3. When the function unused, move the switch (13) to "OFF".

TV OPERATION

1. Pull out the ROD ANT (12) or connect an external antenna to ANT jack (14) for better reception.
2. Used in the vehicle, the diversity unit (with boost function better) is recommended to use to improve the reception performance.



3. Press the TV / AV1 / AV2 key (6,33) to the TV mode.
4. Press the AUTO PROGRAM key (5,34) to scan the whole channels and memorize them.
5. Press the CHANNEL UP (11,40) or DOWN (10,39) key to select the desired TV station. If the channel number displaying on the screen is red, the channel has not been memorized. Repeat step 1 to 5 until the number turns green.
6. If the ROD ANT (12) used, adjust the antenna direction to get the best quality of reception.
7. Adjust the viewing angle. The recommended viewing angle of the TV unit is $+30^{\circ}$ ~ -10° vertical and $+45^{\circ}$ ~ -45° horizontal.

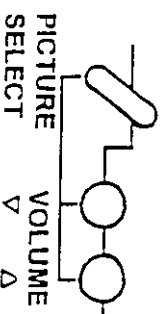
8. Picture Adjustment

- 1) Press the PICTURE SELECT key (35) several times, the screen will appear the picture control bar in the following order sequentially.

(BLANK) → CONTRAST → BRIGHTNESS → COLOR → TINT

Select the item to adjust.

- 2) Before the disappearance of the PICTURE SELECT UP (VOLUME UP) (9,30) or DOWN (VOLUME DOWN) key (0,37), to adjust the picture quality. For example,



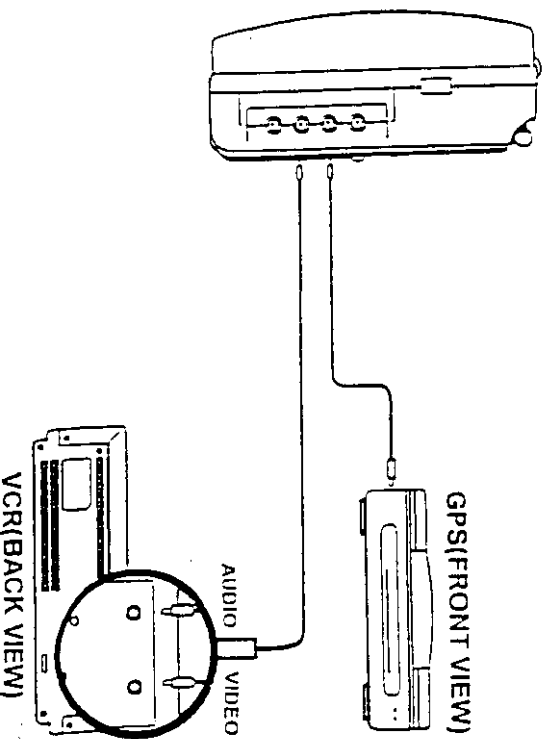
- 3) Press the PICTURE RESET key (36) on the remote control unit will recover the original picture setting.

9. Audio Operation

- 1) Press the VOLUME UP (9,30) or DOWN (0,37) key to adjust the volume output level. If the channel number displaying on the screen is red(it means the channel has not been memoried), the volume control is in vain.
- 2) For earphone used, insert the earphone plug into the EAR jack (17).
- 3) No volume output when the MUTE key (32) on the remote control unit pressed. And press again to recover.

MONITOR OPERATION

1. Input the AV signal from the sources (VCR, Video camera, GPS, etc.) to the AV1(15) and / or AV2(16) jacks. The yellow terminal of the AV cord connects with video signal; the white terminal with audio.



2. Press the TV / AV1 / AV2 key (6,33) to select the desired AV source. The screen is dark when no video inputs.
3. Picture adjustment : as the TV operation described above.
4. Audio operation : as the TV operation described above.

1. Do not expose to temperature extremes or direct sunlight. (see specifications)
2. Avoid dust and wet.
3. Avoid dropping and strong impact.
4. Turn power off and unplug the adaptor when not in use or thundering.
5. Never watch while driving a vehicle.
6. Never attempt your own maintenance.

NOTICE

This device complies with part 15 of FCC Rules. Operation is subject to the following two conditions: (1) This device may not cause harmful interference and (2) this device must accept any interference that may be received, including interference that may cause undesired operation.

※ The changes or modifications not expressly approved by the party responsible for compliance could void the user's authority to operate the equipment.

TROUBLE SHOOTING

Before assuming malfunction of the TV, check as follows :

SYMPTOMS	POSSIBLE CAUSES	WHAT TO DO
No power	<ul style="list-style-type: none"> • AC adaptor or car cord not properly connected. • Fuse of car cord burn out. • Dead batteries. • Incorrect polarity of batteries. (batteries box used) 	<ul style="list-style-type: none"> • Connect correctly. • Replace fuse. • Replace batteries. • Make sure the poles of batteries aligned properly.
Remote control unit cannot work	<ul style="list-style-type: none"> • Batteries unloaded, dead or incorrect polarity. • Remote control distance too far. • Direction of remote control improper. 	<ul style="list-style-type: none"> • Replace batteries. • The distance must be less than 2m. • Point the remote control unit to the sensor directly.
No picture and sound	<ul style="list-style-type: none"> • TV/AV1/AV2 selected incorrectly. • Incorrectly connect AV sources and the TV. 	<ul style="list-style-type: none"> • Press TV/AV1/AV2 key to correct mode. • Check the connection and correct it.
Blurry picture and noise	<ul style="list-style-type: none"> • External antenna not connected properly or rod antenna folded. • Not properly tuned. • Interference from automobiles, electric appliances, etc. • Reception bad due to weak signals, buildings, mountains, etc. 	<ul style="list-style-type: none"> • Check the connection. Extend rod antenna. • Press auto program key again. • Move further away from appliances causing interference. • Change antenna position. • In locations with poor reception, it may not be possible to get a clear picture or any picture at all.
Sound heard but picture all white or dark	<ul style="list-style-type: none"> • Brightness control not set correctly. 	<ul style="list-style-type: none"> • Adjust brightness.
Sound heard but color light	<ul style="list-style-type: none"> • Color control not set correctly. 	<ul style="list-style-type: none"> • Adjust color.
Picture visible but no sound	<ul style="list-style-type: none"> • Mute function works. • Volume control turned too low. • Earphone inserted. 	<ul style="list-style-type: none"> • Mute off. • Turn up volume. • Disconnect earphone.

SPECIFICATIONS

CO405DC

TYPE	Color LCD TV
DISPLAY SCREEN SIZE	4 inches (82.1×61.7 mm) (W×H)
ELEMENT FORMAT	TFT-LCD 4": 480(W)×234(H) Total 112,320 dots

BACK LIGHT	Cold cathode fluorescent lamp
POWER SUPPLY	AC adaptor (AC 120V 60 Hz DC 12V) Car battery (DC 12V)
POWER CONSUMPTION	DC 12V 4": 7W
RECEPTION CHANNELS	VHF-L CH 2~6 VHF-H CH 7~13 UHF CH 14~G9
INPUT TERMINALS	External power jack (DC IN 12~14V) External antenna jack (3.5φ mm) AV1 input jack (3.5φ mm) AV2 input jack (3.5φ mm)
OUTPUT TERMINALS	Diversity jack (3.5φ mm) Earphone jack (3.5φ mm)
OPERATION TEMPERATURE	5° ~ 40° C
STORAGE TEMPERATURE	-20° ~ +60° C
DIMENSIONS	4": 150×116×45 mm (W×H×D)
WEIGHT	4": 460 g

FM TRANSMITTER	F1 88.7MHz F2 89.1MHz
----------------	--------------------------