

RF Exposure Lab

802 N. Twin Oaks Valley Road, Suite 105 • San Marcos, CA 92069 • U.S.A.

TEL (760) 471-2100 • FAX (760) 471-2121

<http://www.rfexposurelab.com>

CERTIFICATE OF COMPLIANCE SAR EVALUATION

EF Johnson
123 N. State St.
Waseca, MN 56093

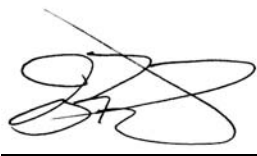
Dates of Test: September 26, 2012
Test Report Number: SAR.20120905
Revision A

FCC ID:	ATH2425770
IC Certificate:	933B-2425770
Model(s):	242-5770
Test Sample:	Engineering Unit Same as Production
Serial Number:	517001211520028
Equipment Type:	Push-To-Talk Handheld Radio for Occupational Use
Classification:	Portable Transmitter Next to Face and Body
TX Frequency Range:	764 – 776 MHz; 794 – 806 MHz; 806 – 824 MHz; 851 – 869 MHz
Frequency Tolerance:	± 2.5 ppm
Maximum RF Output:	770 MHz – 34.14 dB, 800 MHz – 34.19 dB, 815 MHz – 34.77 dB, 860 MHz – 35.16 dB
	Conducted
Signal Modulation:	FM
Accessories:	Standard Body Worn Microphone
Antenna Type:	Standard – P/N 501-0105-073; Stubby – P/N 501-0105-012
Battery:	Li-Ion
Application Type:	Certification
FCC Rule Parts:	Part 2, 90
KDB Test Methodology:	KDB 447498 v04, KDB 643646 D01 v01r01
Industry Canada:	RSS-102, Safety Code 6
Maximum SAR Value:	2.435 W/kg
Separation Distance:	25 mm for Face; 0 mm for Body

This wireless mobile and/or portable device has been shown to be compliant for localized specific absorption rate (SAR) for uncontrolled environment/general exposure limits specified in ANSI/IEEE Std. C95.1-1992 and had been tested in accordance with the measurement procedures specified in IEEE 1528-2003, and OET Bulletin 65 Supp. C (See test report).

I attest to the accuracy of the data. All measurements were performed by myself or were made under my supervision and are correct to the best of my knowledge and belief. I assume full responsibility for the completeness of these measurements and vouch for the qualifications of all persons taking them.

RF Exposure Lab, LLC certifies that no party to this application is subject to a denial of Federal benefits that includes FCC benefits pursuant to Section 5301 of the Anti-Drug Abuse Act of 1988, 21 U.S.C. 853(a).



Jay M. Moulton
Vice President



Certificate # 2387.01

Table of Contents

1.	Introduction	3
	SAR Definition [5].....	3
2.	SAR Measurement Setup	4
	Robotic System	4
	System Hardware	4
	System Electronics	5
	Probe Measurement System.....	5
3.	Probe and Dipole Calibration	10
4.	Phantom & Simulating Tissue Specifications	11
	Head & Body Simulating Mixture Characterization	11
	Device Holder	11
5.	ANSI/IEEE C95.1 – 1992 RF Exposure Limits [2].....	12
	Uncontrolled Environment.....	12
	Controlled Environment	12
6.	Measurement Uncertainty	13
7.	System Validation	14
	Tissue Verification.....	14
	Test System Verification	14
8.	SAR Test Data Summary.....	15
	Procedures Used To Establish Test Signal.....	15
	Device Test Condition	15
	SAR Data Summary – Head SAR in Front of Face Measurements	20
	SAR Data Summary – Body SAR Measurements	21
9.	Test Equipment List	22
10.	Conclusion	23
11.	References	24
	Appendix A – System Validation Plots and Data	25
	Appendix B – SAR Test Data Plots.....	35
	Appendix C – SAR Test Setup Photos	46
	Appendix D – Probe Calibration Data Sheets.....	51
	Appendix E – Dipole Calibration Data Sheets	63
	Appendix F – Phantom Calibration Data Sheets	82

1. Introduction

This measurement report shows compliance of the EF Johnson Model 242-5770 FCC ID: ATH2425770 with FCC Part 2, 1093, ET Docket 93-62 Rules for mobile and portable devices and IC Certificate: 933B-2425770 with RSS102 & Safety Code 6. The FCC have adopted the guidelines for evaluating the environmental effects of radio frequency radiation in ET Docket 93-62 on August 6, 1996 to protect the public and workers from the potential hazards of RF emissions due to FCC regulated portable devices. [1], [6]

The test results recorded herein are based on a single type test of EF Johnson model 242-5770 and therefore apply only to the tested sample.

The test procedures, as described in ANSI C95.1 – 1999 Standard for Safety Levels with Respect to Human Exposure to Radio Frequency Electromagnetic Fields, 3 kHz to 300 GHz [2], ANSI C95.3 – 2002 Recommended Practice for the Measurement of Potentially Hazardous Electromagnetic Fields [3], FCC OET Bulletin 65 Supp. C – 2001 [4], IEEE Std.1528 – 2003 Recommended Practice [5], and Industry Canada Safety Code 6 Limits of Human Exposure to Radiofrequency Electromagnetic Fields in the Frequency Range from 3kHz to 300 GHz were employed.

SAR Definition [5]

Specific Absorption Rate is defined as the time derivative (rate) of the incremental energy (dW) absorbed by (dissipated in) an incremental mass (dm) contained in a volume element (dV) of a given density (ρ).

$$SAR = \frac{d}{dt} \left(\frac{dW}{dm} \right) = \frac{d}{dt} \left(\frac{dW}{\rho dV} \right)$$

SAR is expressed in units of watts per kilogram (W/kg). SAR can be related to the electric field at a point by

$$SAR = \frac{\sigma |E|^2}{\rho}$$

where:

σ = conductivity of the tissue (S/m)

ρ = mass density of the tissue (kg/m³)

E = rms electric field strength (V/m)

2. SAR Measurement Setup

Robotic System

These measurements are performed using the DASY52 automated dosimetric assessment system. The DASY52 is made by Schmid & Partner Engineering AG (SPEAG) in Zurich, Switzerland and consists of high precision robotics system (Staubli), robot controller, Intel Core2 computer, near-field probe, probe alignment sensor, and the generic twin phantom containing the brain equivalent material. The robot is a six-axis industrial robot performing precise movements to position the probe to the location (points) of maximum electromagnetic field (EMF) (see Fig. 2.1).

System Hardware

A cell controller system contains the power supply, robot controller teach pendant (Joystick), and a remote control used to drive the robot motors. The PC consists of the HP Intel Core2 computer with Windows XP system and SAR Measurement Software DASY52, A/D interface card, monitor, mouse, and keyboard. The Staubli Robot is connected to the cell controller to allow software manipulation of the robot. A data acquisition electronic (DAE) circuit that performs the signal amplification, signal multiplexing, AD-conversion, offset measurements, mechanical surface detection, collision detection, etc. is connected to the Electro-optical coupler (EOC). The EOC performs the conversion from the optical into digital electric signal of the DAE and transfers data to the PC plug-in card.

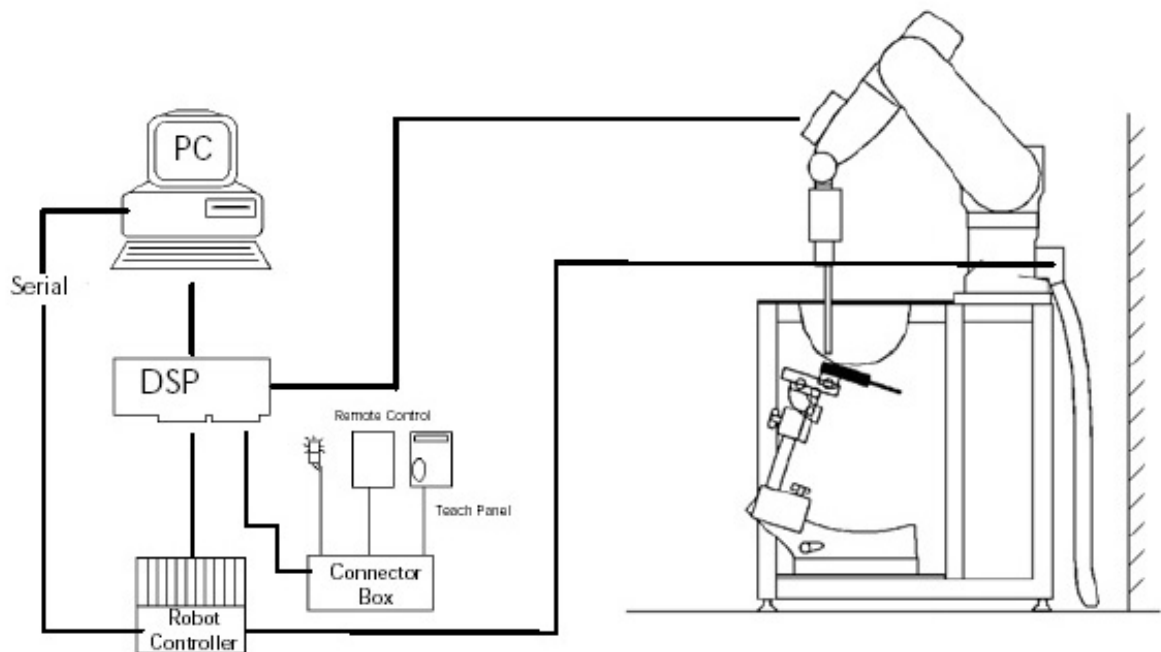


Figure 2.1 SAR Measurement System Setup

System Electronics

The DAE4 consists of a highly sensitive electrometer-grade preamplifier with auto-zeroing, a channel and gain-switching multiplexer, a fast 16 bit AD-converter and a command decoder and control logic unit. Transmission to the PC-card is accomplished through an optical downlink for data and status information and an optical uplink for commands and clock lines. The mechanical probe mounting device includes two different sensor systems for frontal and sidewise probe contacts. They are also used for mechanical surface detection and probe collision detection. The robot uses its own controller with a built in VME-bus computer. The system is described in detail in.

Probe Measurement System

The SAR measurements were conducted with the dosimetric probe EX3DV4, designed in the classical triangular configuration (see Fig. 2.2) and optimized for dosimetric evaluation. The probe is constructed using the thick film technique; with printed resistive lines on ceramic substrates. The probe is equipped with an optical multi fiber line ending at the front of the probe tip. (see Fig. 2.3) It is connected to the EOC box on the robot arm and provides an automatic detection of the phantom surface. Half of the fibers are connected to a pulsed infrared transmitter, the other half to a synchronized receiver. As the probe approaches the surface, the reflection from the surface produces a coupling from the transmitting to the receiving fibers. This reflection increases first during the approach, reaches maximum and then decreases. If the probe is flatly touching the surface, the coupling is zero. The distance of the coupling maximum to the surface is independent of the surface reflectivity and largely independent of the surface to probe angle. The DASY52 software reads the reflection during a software approach and looks for the maximum using a 2nd order fitting. The approach is stopped at reaching the maximum.



DAE System

Probe Specifications

Calibration: In air from 10 MHz to 6.0 GHz
In brain and muscle simulating tissue at Frequencies of 450 MHz, 835 MHz, 1750 MHz, 1900 MHz, 2450 MHz, 2600 MHz, 3500 MHz, 5200 MHz, 5300 MHz, 5600 MHz, 5800 MHz

Frequency: 10 MHz to 6 GHz

Linearity: $\pm 0.2\text{dB}$ (30 MHz to 6 GHz)

Dynamic: 10 mW/kg to 100 W/kg

Range: Linearity: $\pm 0.2\text{dB}$

Dimensions: Overall length: 330 mm

Tip length: 20 mm

Body diameter: 12 mm

Tip diameter: 2.5 mm

Distance from probe tip to sensor center: 1 mm

Application: SAR Dosimetry Testing
Compliance tests of wireless device

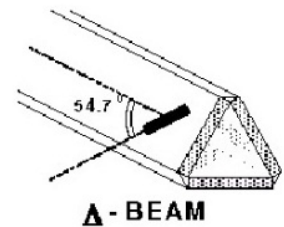


Figure 2.2 Triangular Probe Configurations



Figure 2.3 Probe Thick-Film Technique

Probe Calibration Process

Dosimetric Assessment Procedure

Each probe is calibrated according to a dosimetric assessment procedure described in with accuracy better than +/- 10%. The spherical isotropy was evaluated with the procedure described in and found to be better than +/-0.25dB. The sensitivity parameters (Norm X, Norm Y, Norm Z), the diode compression parameter (DCP) and the conversion factor (Conv F) of the probe is tested.

Free Space Assessment

The free space E-field from amplified probe outputs is determined in a test chamber. This is performed in a TEM cell for frequencies below 1 GHz, and in a waveguide above 1GHz for free space. For the free space calibration, the probe is placed in the volumetric center of the cavity at the proper orientation with the field. The probe is then rotated 360 degrees until the three channels show the maximum reading. The power density readings equates to 1 mW/cm².

Temperature Assessment *

E-field temperature correlation calibration is performed in a flat phantom filled with the appropriate simulated brain tissue. The measured free space E-field in the medium, correlates to temperature rise in a dielectric medium. For temperature correlation calibration a RF transparent thermistor based temperature probe is used in conjunction with the E-field probe

$$SAR = C \frac{\Delta T}{\Delta t}$$

$$SAR = \frac{|E|^2 \cdot \sigma}{\rho}$$

where:

where:

Δt = exposure time (30 seconds),

σ = simulated tissue conductivity,

C = heat capacity of tissue (brain or muscle),

ρ = Tissue density (1.25 g/cm³ for brain tissue)

ΔT = temperature increase due to RF exposure.

SAR is proportional to $\Delta T / \Delta t$, the initial rate of tissue heating, before thermal diffusion takes place.

Now it's possible to quantify the electric field in the simulated tissue by equating the thermally derived SAR to the E- field;

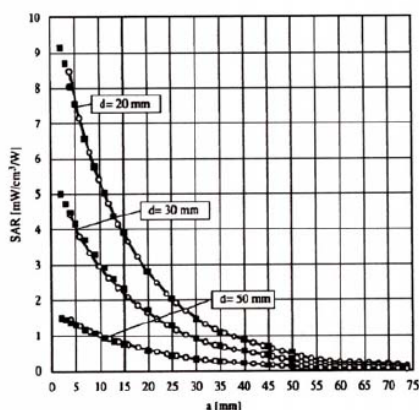


Figure 2.4 E-Field and Temperature Measurements at 900MHz

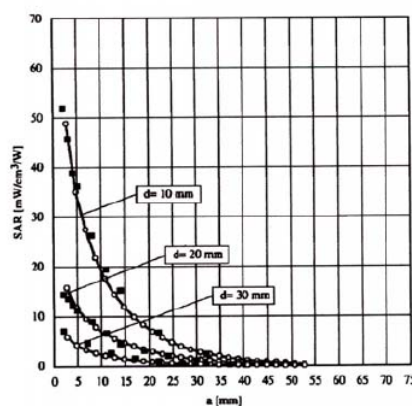


Figure 2.5 E-Field and Temperature Measurements at 1800MHz

Data Extrapolation

The DASY52 software automatically executes the following procedures to calculate the field units from the microvolt readings at the probe connector. The first step of the evaluation is a linearization of the filtered input signal to account for the compression characteristics of the detector diode. The compensation depends on the input signal, the diode type and the DC-transmission factor from the diode to the evaluation electronics. If the exciting field is pulsed, the crest factor of the signal must be known to correctly compensate for peak power. The formula for each channel can be given like below;

$$V_i = U_i + U_i^2 \cdot \frac{cf}{dcp_i}$$

with V_i = compensated signal of channel i (i=x,y,z)
 U_i = input signal of channel i (i=x,y,z)
 cf = crest factor of exciting field (DASY parameter)
 dcp_i = diode compression point (DASY parameter)

From the compensated input signals the primary field data for each channel can be evaluated:

E-field probes:

$$E_i = \sqrt{\frac{V_i}{Norm_i \cdot ConvF}}$$

with V_i = compensated signal of channel i (i = x,y,z)
 $Norm_i$ = sensor sensitivity of channel i (i = x,y,z)
 $\mu V/(V/m)^2$ for E-field probes
 $ConvF$ = sensitivity of enhancement in solution
 E_i = electric field strength of channel i in V/m

The RSS value of the field components gives the total field strength (Hermetian magnitude):

$$E_{tot} = \sqrt{E_x^2 + E_y^2 + E_z^2}$$

The primary field data are used to calculate the derived field units.

$$SAR = E_{tot}^2 \cdot \frac{\sigma}{\rho \cdot 1000}$$

with SAR = local specific absorption rate in W/g
 E_{tot} = total field strength in V/m
 σ = conductivity in [mho/m] or [Siemens/m]
 ρ = equivalent tissue density in g/cm³

The power flow density is calculated assuming the excitation field to be a free space field.

$$P_{free} = \frac{E_{tot}^2}{3770}$$

with P_{pwe} = equivalent power density of a plane wave in W/cm²
 E_{tot} = total electric field strength in V/m

SAM PHANTOM

The SAM Twin Phantom V4.0 is constructed of a fiberglass shell integrated in a wooden table. The shape of the shell is based on data from an anatomical study designed to determine the maximum exposure in at least 90% of all users. It enables the dosimetric evaluation of left and right hand phone usage as well as body mounted usage at the flat phantom region. A cover prevents the evaporation of the liquid. Reference markings on the Phantom allow the complete setup of all predefined phantom positions and measurement grids by manually teaching three points in the robot. (see Fig. 2.6)

Phantom Specification

Phantom: SAM Twin Phantom (V4.0)
Shell Material: Vivac Composite
Thickness: 2.0 ± 0.2 mm

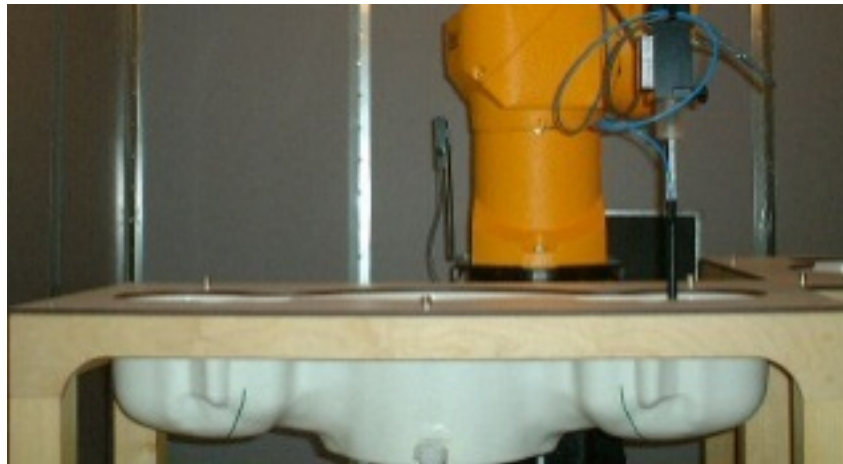


Figure 2.6 SAM Twin Phantom

Device Holder for Transmitters

In combination with the SAM Twin Phantom V4.0 the Mounting Device (see Fig. 2.7), enables the rotation of the mounted transmitter in spherical coordinates whereby the rotation point is the ear opening. The devices can be easily, accurately, and repeatedly be positioned according to the FCC, CENELEC, IEC and IEEE specifications. The device holder can be locked at different phantom locations (left head, right head, flat phantom).



Figure 2.7 Mounting Device

Note: A simulating human hand is not used due to the complex anatomical and geometrical structure of the hand that may produce infinite number of configurations. To produce the worst-case condition (the hand absorbs antenna output power), the hand is omitted during the tests.

3. Probe and Dipole Calibration

See Appendix D and E.

4. Phantom & Simulating Tissue Specifications

Head & Body Simulating Mixture Characterization

The head and body mixtures consist of the material based on the table listed below. The mixture is calibrated to obtain proper dielectric constant (permittivity) and conductivity of the desired tissue. Body tissue parameters that have not been specified in P1528 are derived from the tissue dielectric parameters computed from the 4-Cole-Cole equations.

Table 4.1 Typical Composition of Ingredients for Tissue

Ingredients		Simulating Tissue			
		750 MHz Head	750 MHz Body	850 MHz Head	850 MHz Body
Mixing Percentage					
Water		51.07	52.50	51.07	52.50
Sugar		47.31	45.00	47.31	45.00
Salt		1.15	1.40	1.15	1.40
HEC		0.23	1.00	0.23	1.00
Bactericide		0.24	0.10	0.24	0.10
DGBE		0.00	0.00	0.00	0.00
Dielectric Constant	Target	41.94	55.41	41.50	55.20
Conductivity (S/m)	Target	0.89	0.97	0.90	0.97

Device Holder



In combination with the SAM phantom, the mounting device enables the rotation of the mounted transmitter in spherical coordinates whereby the rotation point is the ear opening. The devices can easily, accurately, and repeatably be positioned according to the FCC specifications. The device holder can be locked at different phantom locations (left head, right head, and uni-phantom).

5. ANSI/IEEE C95.1 – 1992 RF Exposure Limits [2]

Uncontrolled Environment

Uncontrolled Environments are defined as locations where there is the exposure of individuals who have no knowledge or control of their exposure. The general population/uncontrolled exposure limits are applicable to situations in which the general public may be exposed or in which persons who are exposed as a consequence of their employment may not be made fully aware of the potential for exposure or cannot exercise control over their exposure. Members of the general public would come under this category when exposure is not employment-related; for example, in the case of a wireless transmitter that exposes persons in its vicinity.

Controlled Environment

Controlled Environments are defined as locations where there is exposure that may be incurred by persons who are aware of the potential for exposure, (i.e. as a result of employment or occupation). In general, occupational/controlled exposure limits are applicable to situations in which persons are exposed as a consequence of their employment, who have been made fully aware of the potential for exposure and can exercise control over their exposure. This exposure category is also applicable when the exposure is of a transient nature due to incidental passage through a location where the exposure levels may be higher than the general population/uncontrolled limits, but the exposed person is fully aware of the potential for exposure and can exercise control over his or her exposure by leaving the area or by some other appropriate means.

Table 5.1 Human Exposure Limits

	UNCONTROLLED ENVIRONMENT General Population (W/kg) or (mW/g)	CONTROLLED ENVIROMENT Professional Population (W/kg) or (mW/g)
SPATIAL PEAK SAR ¹ Head	1.60	8.00
SPATIAL AVERAGE SAR ² Whole Body	0.08	0.40
SPATIAL PEAK SAR ³ Hands, Feet, Ankles, Wrists	4.00	20.00

¹ The Spatial Peak value of the SAR averaged over any 1 gram of tissue (defined as a tissue volume in the shape of a cube) and over the appropriate averaging time.

² The Spatial Average value of the SAR averaged over the whole body.

³ The Spatial Peak value of the SAR averaged over any 10 grams of tissue (defined as a tissue volume in the shape of a cube) and over the appropriate averaging time.

6. Measurement Uncertainty

Exposure Assessment Measurement Uncertainty

Source of Uncertainty	Tolerance Value	Probability Distribution	Divisor	c_i^1 (1-g)	c_i^1 (10-g)	Standard Uncertainty (1-g) %	Standard Uncertainty (10-g) %	v_i
Measurement System								
Probe Calibration	3.5	normal	1	1	1	3.5	3.5	∞
Axial Isotropy	3.7	rectangular	$\sqrt{3}$	0.7	0.7	1.5	1.5	∞
Hemispherical Isotropy	10.9	rectangular	$\sqrt{3}$	0.7	0.7	4.4	4.4	∞
Boundary Effect	1.0	rectangular	$\sqrt{3}$	1	1	0.6	0.6	∞
Linearity	4.7	rectangular	$\sqrt{3}$	1	1	2.7	2.7	∞
Detection Limit	1.0	rectangular	$\sqrt{3}$	1	1	0.6	0.6	∞
Readout Electronics	1.0	normal	1	1	1	1.0	1.0	∞
Response Time	0.8	rectangular	$\sqrt{3}$	1	1	0.5	0.5	∞
Integration Time	1.7	rectangular	$\sqrt{3}$	1	1	1.0	1.0	∞
RF Ambient Condition	3.0	rectangular	$\sqrt{3}$	1	1	1.7	1.7	∞
Probe Positioner Mech. Restriction	0.4	rectangular	$\sqrt{3}$	1	1	0.2	0.2	∞
Probe Positioning with respect to Phantom Shell	2.9	rectangular	$\sqrt{3}$	1	1	1.7	1.7	∞
Extrapolation and Integration	3.7	rectangular	$\sqrt{3}$	1	1	2.1	2.1	∞
Test Sample Positioning	4.0	normal	1	1	1	4.0	4.0	7
Device Holder Uncertainty	2.0	normal	1	1	1	2.0	2.0	2
Drift of Output Power	4.2	rectangular	$\sqrt{3}$	1	1	2.4	2.4	∞
Phantom and Setup								
Phantom Uncertainty(shape & thickness tolerance)	3.4	rectangular	$\sqrt{3}$	1	1	2.0	2.0	∞
Liquid Conductivity(target)	5.0	rectangular	$\sqrt{3}$	0.7	0.5	2.0	1.4	∞
Liquid Conductivity(meas.)	0.5	normal	1	0.7	0.5	0.4	0.3	5
Liquid Permittivity(target)	5.0	rectangular	$\sqrt{3}$	0.6	0.5	1.7	1.4	∞
Liquid Permittivity(meas.)	1.0	normal	1	0.6	0.5	0.6	0.5	5
Combined Uncertainty		RSS				9.6	9.4	>500
Combined Uncertainty (coverage factor=2)		Normal (k=2)				19.1	18.8	>500

7. System Validation

Tissue Verification

Table 7.1 Measured Tissue Parameters

		835 MHz Head		835 MHz Body	
Date(s)		Sep. 26, 2012		Sep. 26, 2012	
Liquid Temperature (°C)	20.0	Target	Measured	Target	Measured
Dielectric Constant: ϵ		41.50	42.55	55.20	56.66
Conductivity: σ		0.90	0.92	0.97	1.02
		750 MHz Head		750 MHz Body	
Date(s)		Sep. 26, 2012		Sep. 26, 2012	
Liquid Temperature (°C)	20.0	Target	Measured	Target	Measured
Dielectric Constant: ϵ		41.94	41.46	55.53	54.69
Conductivity: σ		0.89	0.90	0.96	0.94

See Appendix A for data printout.

Test System Verification

Prior to assessment, the system is verified to the $\pm 10\%$ of the specifications at the test frequency by using the system kit. Power is normalized to 1 watt. (Graphic Plots Attached)

Table 7.2 System Dipole Validation Target & Measured

	Test Frequency	Targeted SAR _{1g} (W/kg)	Measure SAR _{1g} (W/kg)	Tissue Used for Verification	Deviation (%)
26-Sep-2012	835 MHz	9.56	9.94	Head	+ 3.98
26-Sep-2012	835 MHz	9.89	10.00	Body	+ 1.11
22-Oct-2012	750 MHz	8.29	8.23	Head	- 0.72
22-Oct-2012	750 MHz	8.82	8.50	Body	- 3.63

See Appendix A for data plots.

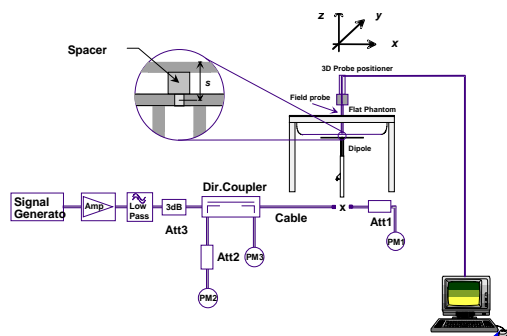


Figure 7.1 Dipole Validation Test Setup

Note: KDB 450824 D02 v01 was applied for probe calibration frequencies greater than or equal to 50 MHz of the DUT frequencies.

8. SAR Test Data Summary

See Measurement Result Data Pages

See Appendix B for SAR Test Data Plots.
See Appendix C for SAR Test Setup Photos.

Procedures Used To Establish Test Signal

The device was either placed into simulated transmit mode using the manufacturer's test codes or the actual transmission is activated through a base station simulator or similar equipment. See data pages for actual procedure used in measurement.

Device Test Condition

In order to verify that the device was tested at full power, conducted output power measurements were performed before and after each SAR measurement to confirm the output power unless otherwise noted. If a conducted power deviation of more than 5% occurred, the test was repeated. The power drift of each test is measured at the start of the test and again at the end of the test. The drift percentage is calculated by the formula $((\text{end/start}) - 1) * 100$ and rounded to three decimal places. The drift percentage is calculated into the resultant SAR value on the data sheet for each test.

The EUT was tested in the face position with the front of the device 25 mm away from the flat phantom. The EUT was then tested in the body position with the belt clip in contact with the flat phantom. The microphone which did not contain an antenna was connected to the device for the body testing. For each of the tests conducted, the device was set to continuously transmit at a maximum output power on the channel specified in the test data. The SAR was scaled to 50% duty cycle per KDB 643646 D01 v01r01. All test reductions were reduced based on the reductions in KDB 643646 D01 v01r01.

Body Measurements		
	Lilon High Capacity Battery	
Audio Accessory	Antenna A	Antenna B
Speaker/Microphone A	Tested	Tested
Speaker/Microphone B	Not Tested	Not Tested
Speaker/Microphone C	Not Tested	Not Tested

Face Measurements		
	Lilon High Capacity Battery	
Audio Accessory	Antenna A	Antenna B
Speaker/Microphone A	Not Tested	Not Tested
Speaker/Microphone B	Not Tested	Not Tested
Speaker/Microphone C	Not Tested	Not Tested

ATH2425770 Accessories

Accessory	Description	Part Number
Battery	Lilon High Capacity Battery	587-5700-374
Belt Clip	Belt Clip 2.25"	585-5100-128
Antenna A	1/2 Wave Antenna 700/800 MHz	501-0105-073
Antenna B	1/4 Wave Antenna 700/800 MHz	501-0105-012
Audio Accessory A	Standard Speaker/mic 18" cable	589-3600-052-18
Audio Accessory B	Standard Speaker/mic 25" cable	589-3600-052-25
Audio Accessory C	Standard Speaker/mic 30" cable	589-3600-052-30

Only one battery was supplied for this testing. Speaker/Microphone A-C do not have any radiating source on the accessory. Therefore, one representative accessory was tested for body measurement per the table. The only difference between the three accessories is the length of the cable. The length would not have an effect on the overall SAR value. Therefore, the 18" accessory version was tested in the body position.

Low Band				Mid Band		
Freq	Channel	Power (dB)		Freq	Channel	Power (dB)
764.0125	1	34.14		806.0125	7	34.68
770.0125	2	34.07		814.5125	8	34.71
775.9875	3	34.01		823.9875	9	34.77
Mid Band				High Band		
Freq	Channel	Power		Freq	Channel	Power
794.0125	4	34.06		851.0125	10	35.16
800.0125	5	34.03		859.5125	11	35.01
805.9875	6	34.19		868.9875	12	34.09

Per KDB 447498 D01 v04 page 7 section 6) c), the number of channels required to be tested is as follows:

$$F_{\text{high}} = 806 \text{ MHz}$$

$$F_c = 785 \text{ MHz}$$

$$F_{\text{low}} = 764 \text{ MHz}$$

$$N_c = \text{Round} \{ [100(f_{\text{high}} - f_{\text{low}})/f_c]^{0.5} \times (f_c/100)^{0.2} \} = \text{Round} \{ [100(806-764)/785]^{0.5} \times (785/100)^{0.2} \} = 4$$

Therefore, for the frequency band from 764 MHz to 806 MHz, 4 channels are required for testing.

$$F_{\text{high}} = 869 \text{ MHz}$$

$$F_c = 837 \text{ MHz}$$

$$F_{\text{low}} = 806 \text{ MHz}$$

$$N_c = \text{Round} \{ [100(f_{\text{high}} - f_{\text{low}})/f_c]^{0.5} \times (f_c/100)^{0.2} \} = \text{Round} \{ [100(869-806)/837]^{0.5} \times (837/100)^{0.2} \} = 4$$

Therefore, for the frequency band from 806 MHz to 869 MHz, 4 channels are required for testing.

Head SAR – In Front of Face (Handset)			
Antenna (MHz)	Channel Freq. (MHz)	Default Battery ¹	
		Measured Power (W)	Measure SAR (W/kg)
A (764 – 806)	764.0125	34.14	0.805
	770.0125	34.07	²
	775.9875	34.01	²
	794.0125	34.06	²
	800.0125	34.03	²
	805.9875	34.19	²
B (764 – 806)	764.0125	34.14	1.055
	770.0125	34.07	²
	775.9875	34.01	²
	794.0125	34.06	²
	800.0125	34.03	²
	805.9875	34.19	²
A (806 – 869)	806.0125	34.68	²
	814.5125	34.71	²
	823.9875	34.77	²
	851.0125	35.16	1.865
	859.5125	35.01	²
	868.9875	34.09	²
B (806 – 869)	806.0125	34.68	²
	814.5125	34.71	²
	823.9875	34.77	²
	851.0125	35.16	0.950
	859.5125	35.01	²
	868.9875	34.09	²

¹See Accessory table on page 14 of this report.

²Measurement was reduced per KDB 643646 D01 v01r01 page 2 section 1) A) I) a).

Body SAR			
Antenna (MHz)	Channel Freq. (MHz)	Default Battery ¹	
		Body Worn Device (Belt Clip) ¹	
		Measured Power (W)	Audio Acc. A ^{1,3} Measured SAR (W/kg)
A (764 – 806)	764.0125	34.14	0.950
	770.0125	34.07	²
	775.9875	34.01	²
	794.0125	34.06	²
	800.0125	34.03	²
	805.9875	34.19	²
B (764 – 806)	764.0125	34.14	2.380
	770.0125	34.07	²
	775.9875	34.01	²
	794.0125	34.06	²
	800.0125	34.03	²
	805.9875	34.19	²
A (806 – 869)	806.0125	34.68	²
	814.5125	34.71	²
	823.9875	34.77	²
	851.0125	35.16	1.495
	859.5125	35.01	²
	868.9875	34.09	²
B (806 – 869)	806.0125	34.68	²
	814.5125	34.71	²
	823.9875	34.77	²
	851.0125	35.16	2.435
	859.5125	35.01	²
	868.9875	34.09	²

¹See Accessory table on page 14 of this report.

²Measurement was reduced per KDB 643646 D01 v01r01 page 5 section 1) A) I) a).

³Audio Accessories B & C are the same as A with the exception of the length of the cable. See page 14 for details.

SAR Data Summary – Head SAR in Front of Face Measurements

MEASUREMENT RESULTS								
Gap	Configuration	Frequency		Modulation	Antenna	End Power	SAR (W/kg)	SAR (W/kg) 50% Duty Cycle
		MHz	Ch.			(dBm)		
25 mm	Handset	764.0125	1	FM	A	34.19	1.610	0.805
		851.0125	10	FM		35.16	3.730	1.865
		764.0125	1	FM	B	34.19	2.110	1.055
		851.0125	10	FM		35.16	1.900	0.950
				Body 8.0 W/kg (mW/g) averaged over 1 gram				

- Battery is fully charged for all tests.
Power Measured ☒ Conducted ☐ ERP ☐ EIRP
- SAR Measurement
Phantom Configuration ☐ Left Head ☒ Eli4 ☐ Right Head
SAR Configuration ☐ Head ☒ Body
- Test Signal Call Mode ☒ Test Code ☐ Base Station Simulator
- Test Configuration ☐ With Belt Clip ☐ Without Belt Clip ☒ N/A
- Tissue Depth is at least 15.0 cm



Jay M. Moulton
Vice President

Note: SAR Tested on the Highest output power channel. When the measured channel is less than 3.5 W/kg, the remaining channels are not required to be tested per KDB 643646 D01 v01r01 page 2 section 1) A) I) a). The SAR is calculated for the 50% duty cycle for PTT devices. The testing was conducted with the device 25 mm from the flat phantom. All testing was conducted per KDB 447498 v04, 643646 D01 v01r01 and OET Bulletin 65. See the photo in Appendix C a pictorial of the setup and labeling of the test locations.

SAR Data Summary – Body SAR Measurements

MEASUREMENT RESULTS								
Gap	Configuration	Frequency		Modulation	Antenna	End Power	SAR	SAR (W/kg)
		MHz	Ch.			(dBm)	(W/kg)	50% Duty Cycle
0 mm	Body	764.0125	1	FM	A	34.19	1.900	0.950
		851.0125	10	FM		35.16	2.990	1.495
		764.0125	1	FM	B	34.19	4.760	2.380
		851.0125	10	FM		35.16	4.870	2.435
				Body 8.0 W/kg (mW/g) averaged over 1 gram				

- Battery is fully charged for all tests.

Power Measured

☒ Conducted

☐ ERP

☐ EIRP

- SAR Measurement

Phantom Configuration

☐ Left Head

☒ Eli4

☐ Right Head

SAR Configuration

☐ Head

☒ Body

- Test Signal Call Mode

☒ Test Code

☐ Base Station Simulator

- Test Configuration

☒ With Belt Clip

☐ Without Belt Clip ☐ N/A

- Tissue Depth is at least 15.0 cm



Jay M. Moulton
Vice President

Note: SAR Tested on the Highest output power channel. When the measured channel is less than 3.5 W/kg, the remaining channels are not required to be tested per KDB 643646 D01 v01r01 page 5 section 1) A) I) a). The SAR is calculated for the 50% duty cycle for PTT devices. The testing was conducted with the device 25 mm from the flat phantom. All testing was conducted per KDB 447498 v04, 643646 D01 v01r01 and OET Bulletin 65. See the photo in Appendix C a pictorial of the setup and labeling of the test locations.

9. Test Equipment List

Table 9.1 Equipment Specifications

Type	Calibration Due Date	Calibration Done Date	Serial Number
Staubli Robot TX60L	N/A	N/A	F07/55M6A1/A/01
Measurement Controller CS8c	N/A	N/A	1012
ELI4 Flat Phantom	N/A	N/A	1065
Device Holder	N/A	N/A	N/A
Data Acquisition Electronics 4	08/15/2012	08/15/2013	759
SAR Software V52.8.2.969	N/A	N/A	N/A
SPEAG E-Field Probe EX3DV4	08/20/2013	08/20/2012	3693
Speag Validation Dipole D835V2	11/09/2010	11/09/2012	4d089
SPEAG Validation Dipole D1900V2	11/12/2012	11/12/2010	5d116
Speag Validation Dipole D1750V2	11/12/2010	11/12/2012	1018
Agilent N1911A Power Meter	03/29/2013	03/29/2012	GB45100254
Agilent N1922A Power Sensor	03/29/2013	03/29/2012	MY45240464
Advantest R3261A Spectrum Analyzer	03/29/2013	03/29/2012	31720068
Agilent (HP) 8350B Signal Generator	03/29/2013	03/29/2012	2749A10226
Agilent (HP) 83525A RF Plug-In	03/29/2013	03/29/2012	2647A01172
Agilent (HP) 8753C Vector Network Analyzer	03/29/2013	03/29/2012	3135A01724
Agilent (HP) 85047A S-Parameter Test Set	04/03/2013	04/03/2012	2904A00595
Agilent (HP) 8960 Base Station Sim.	04/05/2014	04/05/2012	MY48360364
Anritsu MT8820C	08/03/2012	08/03/2014	6201176199
Apriel Dielectric Probe Assembly	N/A	N/A	0011
Body Equivalent Matter (835/900 MHz)	N/A	N/A	N/A
Head Equivalent Matter (835/900 MHz)	N/A	N/A	N/A

10. Conclusion

The SAR measurement indicates that the EUT complies with the RF radiation exposure limits of the FCC. These measurements are taken to simulate the RF effects exposure under worst-case conditions. Precise laboratory measures were taken to assure repeatability of the tests. The tested device complies with the requirements in respect to all parameters subject to the test. The test results and statements relate only to the item(s) tested.

Please note that the absorption and distribution of electromagnetic energy in the body is a very complex phenomena that depends on the mass, shape, and size of the body; the orientation of the body with respect to the field vectors; and, the electrical properties of both the body and the environment. Other variables that may play a substantial role in possible biological effects are those that characterize the environment (e.g. ambient temperature, air velocity, relative humidity, and body insulation) and those that characterize the individual (e.g. age, gender, activity level, debilitation, or disease). Because innumerable factors may interact to determine the specific biological outcome of an exposure to electromagnetic fields, any protection guide shall consider maximal amplification of biological effects as a result of field-body interactions, environmental conditions, and physiological variables.

11. References

- [1] Federal Communications Commission, ET Docket 93-62, Guidelines for Evaluating the Environmental Effects of Radio Frequency Radiation, August 1996
- [2] ANSI/IEEE C95.1 – 1992, American National Standard Safety Levels with respect to Human Exposure to Radio Frequency Electromagnetic Fields, 300kHz to 100GHz, New York: IEEE, 1992.
- [3] ANSI/IEEE C95.3 – 1992, IEEE Recommended Practice for the Measurement of Potentially Hazardous Electromagnetic Fields – RF and Microwave, New York: IEEE, 1992.
- [4] Federal Communications Commission, OET Bulletin 65 (Edition 97-01), Supplement C (Edition 01-01), Evaluating Compliance with FCC Guidelines for Human Exposure to Radio Frequency Electromagnetic Fields, June 2001.
- [5] IEEE Standard 1528 – 2003, IEEE Recommended Practice for Determining the Peak-Spatial Average Specific Absorption Rate (SAR) in the Human Head from Wireless Communication Devices: Measurement Techniques, October 2003.
- [6] Industry Canada, RSS – 102e, Radio Frequency Exposure Compliance of Radiocommunication Apparatus (All Frequency Bands), March 2010.
- [7] Health Canada, Safety Code 6, Limits of Human Exposure to Radiofrequency Electromagnetic Fields in the Frequency Range from 3kHz to 300 GHz, 2009.

Appendix A – System Validation Plots and Data

Test Result for UIM Dielectric Parameter

Wed 26/Sep/2012 10:44:11

Freq Frequency(GHz)

FCC_eH FCC OET 65 Supplement C (June 2001) Limits for Head Epsilon

FCC_sH FCC OET 65 Supplement C (June 2001) Limits for Head Sigma

Test_e Epsilon of UIM

Test_s Sigma of UIM

Freq	FCC_eH	FCC_sH	Test_e	Test_s
0.7900	41.73	0.90	43.10	0.90
0.8000	41.68	0.90	42.97	0.90
0.8100	41.63	0.90	42.75	0.91
0.8200	41.58	0.90	42.64	0.91
0.8300	41.53	0.90	42.58	0.92
0.8350	41.50	0.90	42.55	0.92*
0.8400	41.50	0.91	42.52	0.93
0.8500	41.50	0.92	42.49	0.94
0.8600	41.50	0.93	42.40	0.95
0.8700	41.50	0.94	42.39	0.96
0.8800	41.50	0.95	42.37	0.97

* value interpolated

Test Result for UIM Dielectric Parameter

Wed 26/Sep/2012 06:38:20

Freq Frequency(GHz)

FCC_eH FCC Bulletin 65 Supplement C (June 2001) Limits for Head Epsilon

FCC_sH FCC Bulletin 65 Supplement C (June 2001) Limits for Head Sigma

FCC_eB FCC Limits for Body Epsilon

FCC_sB FCC Limits for Body Sigma

Test_e Epsilon of UIM

Test_s Sigma of UIM

Freq	FCC_eB	FCC_sB	Test_e	Test_s
0.7900	55.38	0.97	56.82	0.96
0.8000	55.34	0.97	56.79	0.96
0.8100	55.30	0.97	56.77	0.98
0.8200	55.26	0.97	56.75	0.99
0.8300	55.22	0.97	56.69	1.01
0.8350	55.20	0.98	56.66	1.02*
0.8400	55.18	0.98	56.62	1.02
0.8500	55.15	0.99	56.59	1.04
0.8600	55.12	1.00	56.57	1.04
0.8700	55.09	1.01	56.57	1.05
0.8800	55.06	1.03	56.53	1.05

* value interpolated

Test Result for UIM Dielectric Parameter
Mon 22/Oct/2012 10:07:30
Freq Frequency(GHz)
FCC_eH FCC OET 65 Supplement C (June 2001) Limits for Head Epsilon
FCC_sH FCC OET 65 Supplement C (June 2001) Limits for Head Sigma
Test_e Epsilon of UIM
Test_s Sigma of UIM

Freq	FCC_eH	FCC_sH	Test_e	Test_s
0.7000	42.20	0.89	41.76	0.86
0.7100	42.15	0.89	41.69	0.87
0.7200	42.10	0.89	41.64	0.88
0.7300	42.05	0.89	41.57	0.89
0.7400	41.99	0.89	41.51	0.89
0.7500	41.94	0.89	41.46	0.90
0.7600	41.89	0.89	41.40	0.91
0.7700	41.84	0.89	41.34	0.92
0.7800	41.79	0.90	41.28	0.92
0.7900	41.73	0.90	41.22	0.93
0.8000	41.68	0.90	41.18	0.94

Test Result for UIM Dielectric Parameter
Mon 22/Oct/2012 07:15:38
Freq Frequency(GHz)
FCC_eH FCC Bulletin 65 Supplement C (June 2001) Limits for Head Epsilon
FCC_sH FCC Bulletin 65 Supplement C (June 2001) Limits for Head Sigma
FCC_eB FCC Limits for Body Epsilon
FCC_sB FCC Limits for Body Sigma
Test_e Epsilon of UIM
Test_s Sigma of UIM

Freq	FCC_eB	FCC_sB	Test_e	Test_s
0.7000	55.73	0.96	54.98	0.89
0.7100	55.69	0.96	54.92	0.90
0.7200	55.65	0.96	54.87	0.91
0.7300	55.61	0.96	54.81	0.92
0.7400	55.57	0.96	54.77	0.93
0.7500	55.53	0.96	54.69	0.94
0.7600	55.49	0.96	54.62	0.95
0.7700	55.45	0.96	54.58	0.96
0.7800	55.41	0.97	54.57	0.97
0.7900	55.38	0.97	54.50	0.98
0.8000	55.34	0.97	54.45	0.98

RF Exposure Lab

DUT: Dipole 835 MHz D835V2; Type: D835V2; Serial: D835V2 - SN:4d089

Communication System: CW; Frequency: 835 MHz; Duty Cycle: 1:1

Medium: HSL900; Medium parameters used (interpolated): $f = 835$ MHz; $\sigma = 0.925$ mho/m; $\epsilon_r = 42.55$; $\rho = 1000$ kg/m³

Phantom section: Flat Section

Test Date: Date: 9/26/2012; Ambient Temp: Meas. Ambient Temp(celsius)- 23° C; Tissue Temp: Tissue Temp(celsius)- 21° C

Probe: EX3DV4 - SN3693; ConvF(8.55, 8.55, 8.55); Calibrated: 8/20/2012;

Sensor-Surface: 4mm (Mechanical Surface Detection)

Electronics: DAE4 Sn759; Calibrated: 8/15/2012

Phantom: ELI 4.0; Type: QDOVA001BA; Serial: 1065

Measurement SW: DASY52, Version 52.8 (2); SEMCAD X Version 14.6.6 (6824)

Procedure Notes:

835 MHz Head Validation/835 MHz Body Validation/Area Scan (41x121x1): Interpolated grid: dx=1.500 mm, dy=1.500 mm

[Info: Interpolated medium parameters used for SAR evaluation.](#)

Maximum value of SAR (interpolated) = 1.07 W/kg

835 MHz Head Validation/835 MHz Body Validation/Zoom Scan (5x5x7)/Cube 0: Measurement grid: dx=8mm, dy=8mm, dz=5mm

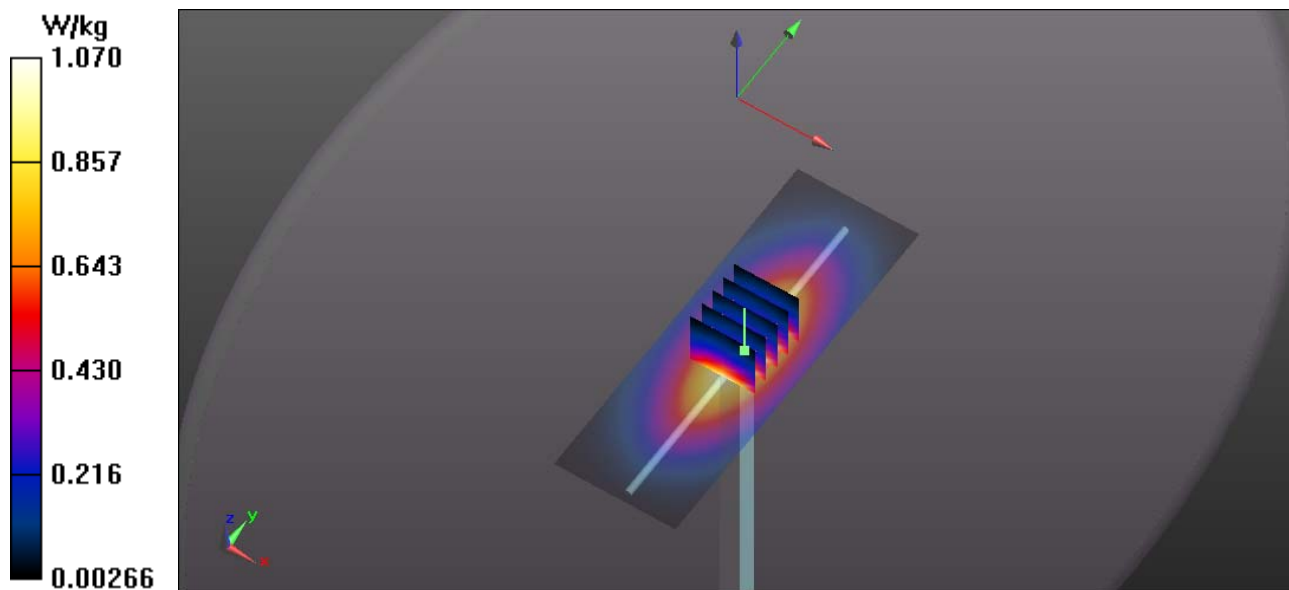
Reference Value = 34.405 V/m; Power Drift = -0.15 dB

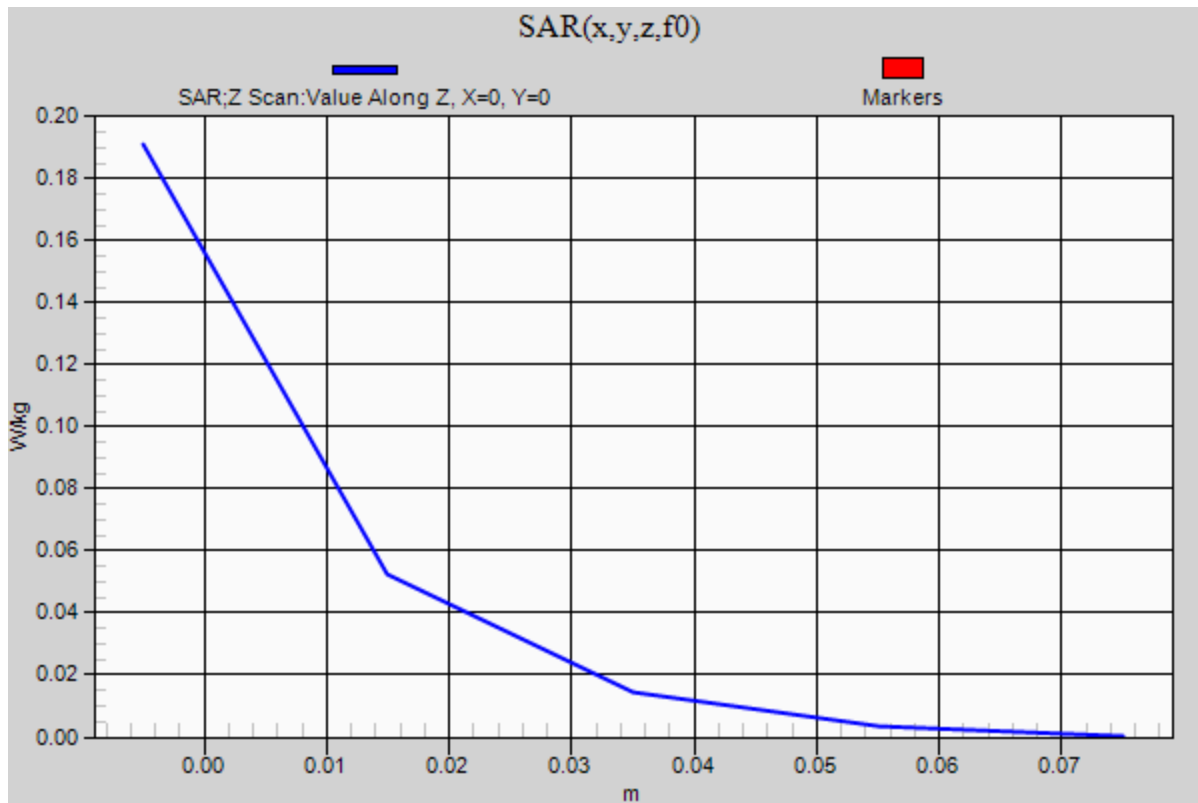
Peak SAR (extrapolated) = 1.457 mW/g

SAR(1 g) = 0.994 mW/g; SAR(10 g) = 0.654 mW/g

[Info: Interpolated medium parameters used for SAR evaluation.](#)

Maximum value of SAR (measured) = 1.08 W/kg





RF Exposure Lab

DUT: Dipole 835 MHz D835V2; Type: D835V2; Serial: D835V2 - SN:4d089

Communication System: CW; Frequency: 835 MHz; Duty Cycle: 1:1
Medium: MSL900; Medium parameters used (interpolated): $f = 835 \text{ MHz}$; $\sigma = 1.015 \text{ mho/m}$; $\epsilon_r = 56.655$; $\rho = 1000 \text{ kg/m}^3$
Phantom section: Flat Section

Test Date: Date: 9/26/2012; Ambient Temp: Meas. Ambient Temp(celsius)- 23° C; Tissue Temp: Tissue Temp(celsius)- 21° C
Probe: EX3DV4 - SN3693; ConvF(8.87, 8.87, 8.87); Calibrated: 8/20/2012;
Sensor-Surface: 4mm (Mechanical Surface Detection)
Electronics: DAE4 Sn759; Calibrated: 8/15/2012
Phantom: ELI 4.0; Type: QDOVA001BA; Serial: 1065
Measurement SW: DASY52, Version 52.8 (2); SEMCAD X Version 14.6.6 (6824)

Procedure Notes:

835 MHz Body Validation/835 MHz Body Validation/Area Scan (41x121x1): Interpolated grid: $dx=1.500 \text{ mm}$, $dy=1.500 \text{ mm}$

[Info: Interpolated medium parameters used for SAR evaluation.](#)

Maximum value of SAR (interpolated) = 1.08 W/kg

835 MHz Body Validation/835 MHz Body Validation/Zoom Scan (5x5x7)/Cube 0: Measurement grid: $dx=8\text{mm}$, $dy=8\text{mm}$, $dz=5\text{mm}$

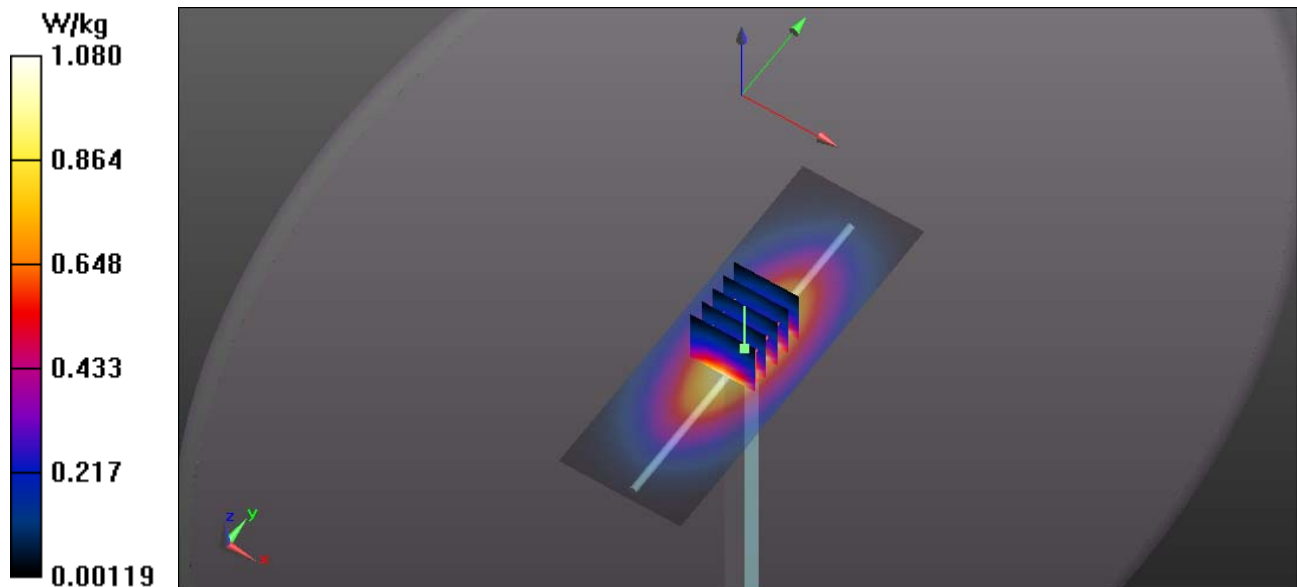
Reference Value = 32.506 V/m; Power Drift = 0.06 dB

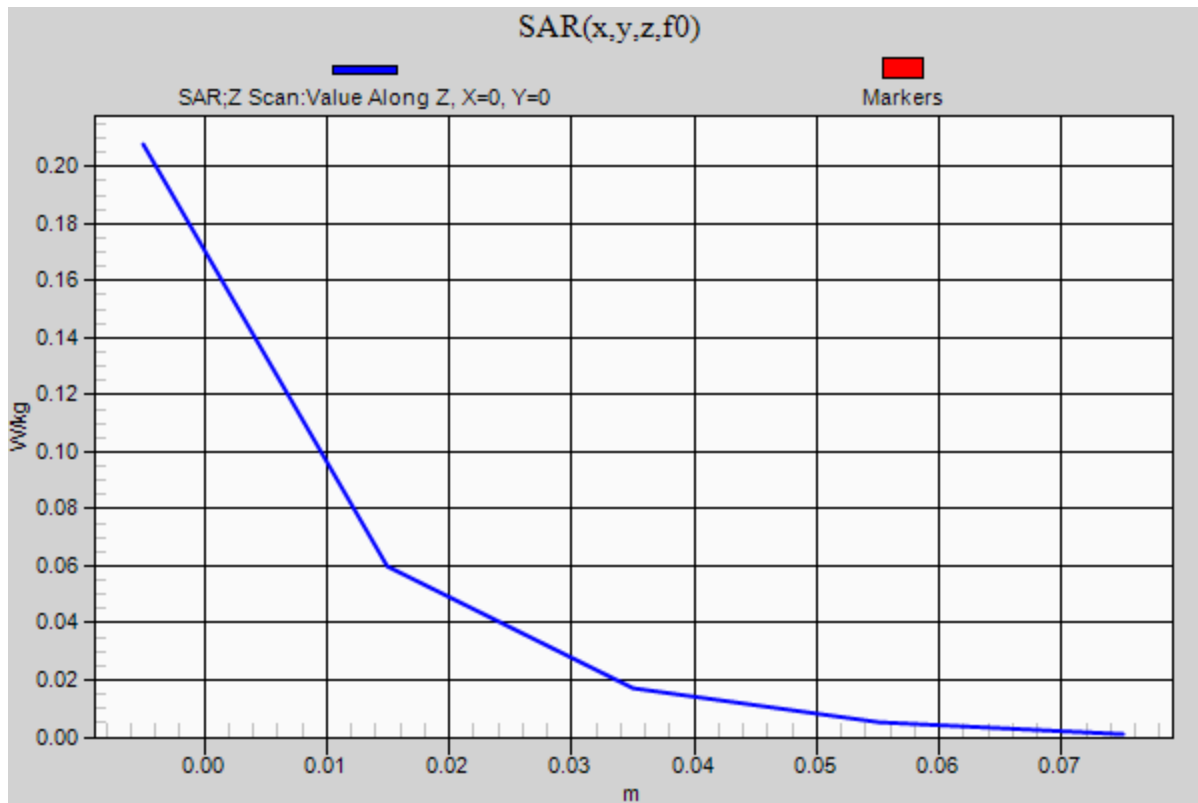
Peak SAR (extrapolated) = 1.484 mW/g

SAR(1 g) = 1 mW/g; SAR(10 g) = 0.662 mW/g

[Info: Interpolated medium parameters used for SAR evaluation.](#)

Maximum value of SAR (measured) = 1.09 W/kg





RF Exposure Lab

DUT: Dipole 750 MHz D750V3; Type: D750V3; Serial: D750V3 - SN 1016

Communication System: CW; Frequency: 750 MHz; Duty Cycle: 1:1

Medium: HSL750; Medium parameters used: $f = 750 \text{ MHz}$; $\sigma = 0.9 \text{ mho/m}$; $\epsilon_r = 41.46$; $\rho = 1000 \text{ kg/m}^3$

Phantom section: Flat Section

Test Date: Date: 10/22/2012; Ambient Temp: Meas. Ambient Temp(celsius)- 23° C; Tissue Temp: Tissue Temp(celsius)- 21° C

Probe: EX3DV4 - SN3693; ConvF(8.99, 8.99, 8.99); Calibrated: 8/20/2012;

Sensor-Surface: 4mm (Mechanical Surface Detection)

Electronics: DAE4 Sn759; Calibrated: 8/15/2012

Phantom: ELI 4.0; Type: QDOVA001BA; Serial: 1065

Measurement SW: DASY52, Version 52.8 (2); SEMCAD X Version 14.6.6 (6824)

Procedure Notes:

750 MHz Head Validation/750 MHz Body Validation/Area Scan (41x121x1): Interpolated grid:

$dx=1.500 \text{ mm}$, $dy=1.500 \text{ mm}$

Maximum value of SAR (interpolated) = 0.883 W/kg

750 MHz Head Validation/750 MHz Body Validation/Zoom Scan (5x5x7)/Cube 0: Measurement grid:

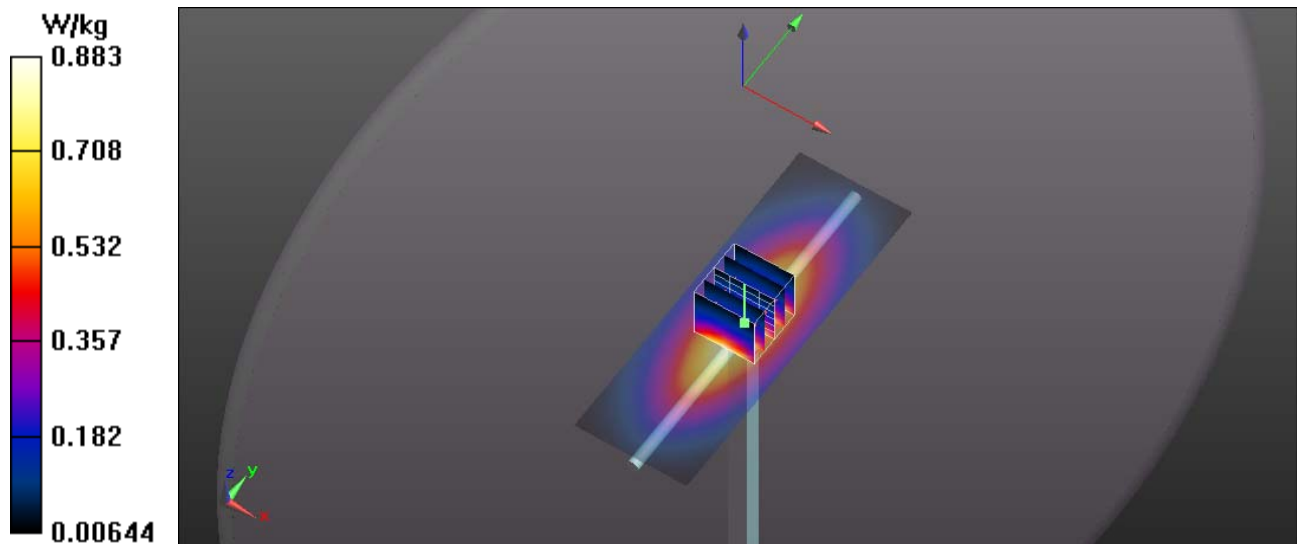
$dx=8\text{mm}$, $dy=8\text{mm}$, $dz=5\text{mm}$

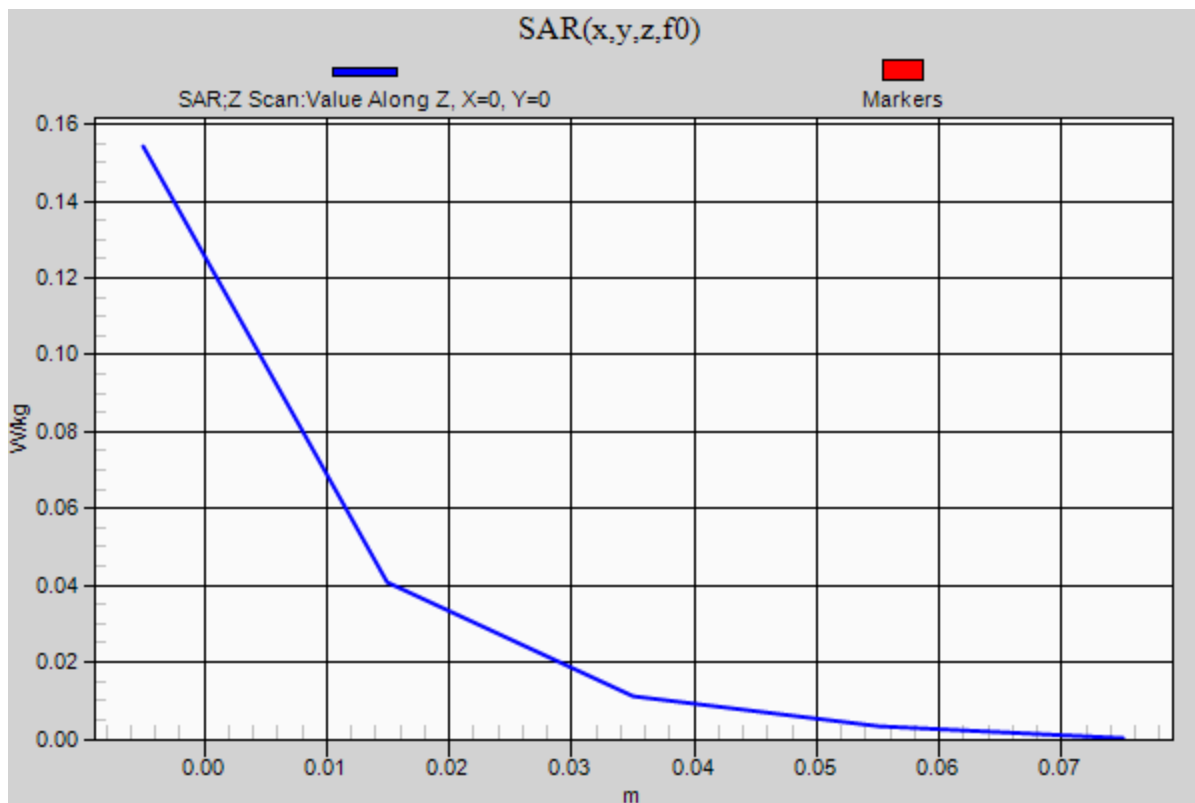
Reference Value = 31.949 V/m; Power Drift = -0.13 dB

Peak SAR (extrapolated) = 1.224 mW/g

SAR(1 g) = 0.823 mW/g; SAR(10 g) = 0.538 mW/g

Maximum value of SAR (measured) = 0.888 W/kg





RF Exposure Lab

DUT: Dipole 750 MHz D750V3; Type: D750V3; Serial: D750V3 - SN 1016

Communication System: CW; Frequency: 750 MHz; Duty Cycle: 1:1

Medium: MSL750; Medium parameters used: $f = 750 \text{ MHz}$; $\sigma = 0.94 \text{ mho/m}$; $\epsilon_r = 54.69$; $\rho = 1000 \text{ kg/m}^3$

Phantom section: Flat Section

Test Date: Date: 10/22/2012; Ambient Temp: Meas. Ambient Temp(celsius)- 23° C; Tissue Temp: Tissue Temp(celsius)- 21° C

Probe: EX3DV4 - SN3693; ConvF(8.84, 8.84, 8.84); Calibrated: 8/20/2012;

Sensor-Surface: 4mm (Mechanical Surface Detection)

Electronics: DAE4 Sn759; Calibrated: 8/15/2012

Phantom: ELI 4.0; Type: QDOVA001BA; Serial: 1065

Measurement SW: DASY52, Version 52.8 (2); SEMCAD X Version 14.6.6 (6824)

Procedure Notes:

750 MHz Validation/750 MHz Validation/Area Scan (61x101x1): Interpolated grid: $dx=1.500 \text{ mm}$, $dy=1.500 \text{ mm}$

Maximum value of SAR (interpolated) = 0.915 W/kg

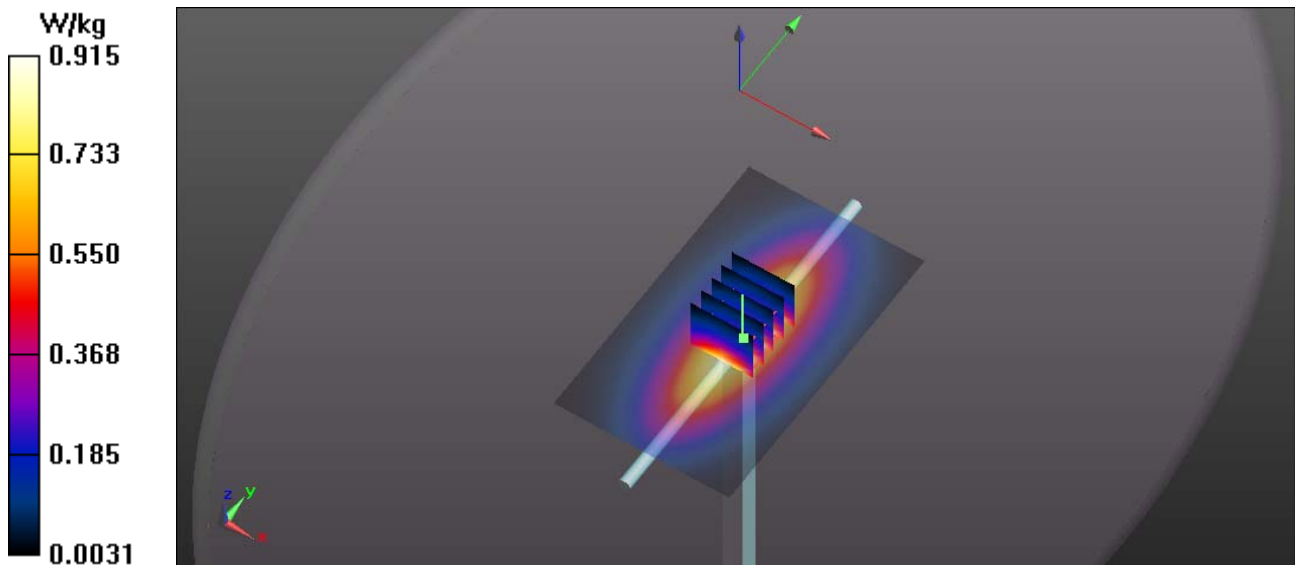
750 MHz Validation/750 MHz Validation/Zoom Scan (5x5x7)/Cube 0: Measurement grid: $dx=8\text{mm}$, $dy=8\text{mm}$, $dz=5\text{mm}$

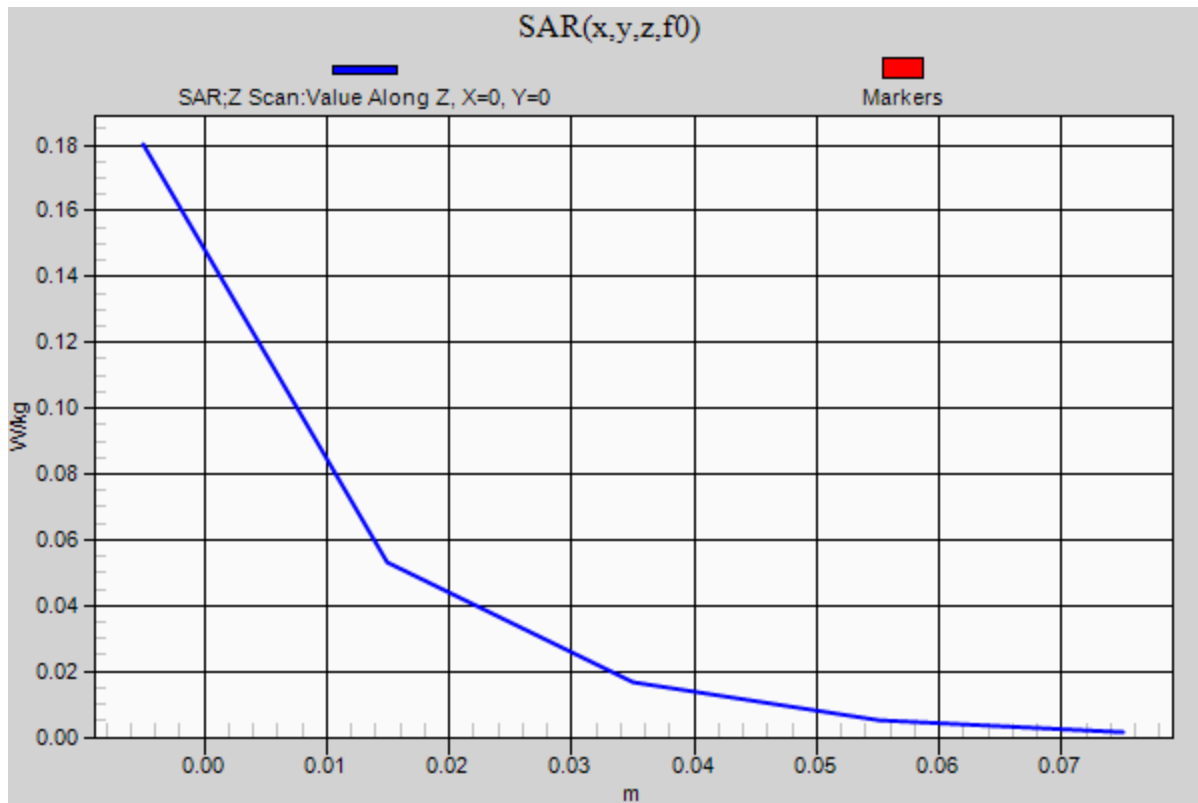
Reference Value = 31.622 V/m; Power Drift = -0.14 dB

Peak SAR (extrapolated) = 1.240 mW/g

SAR(1 g) = 0.850 mW/g; SAR(10 g) = 0.564 mW/g

Maximum value of SAR (measured) = 0.915 W/kg





Appendix B – SAR Test Data Plots

RF Exposure Lab

DUT: Viking VP800; Type: PTT; Serial: 517001211520028

Communication System: FM; Frequency: 764.013 MHz; Duty Cycle: 1:1
Medium: HSL750; Medium parameters used (interpolated): $f = 764.013$ MHz; $\sigma = 0.914$ mho/m; $\epsilon_r = 41.376$; $\rho = 1000$ kg/m³
Phantom section: Flat Section

Test Date: Date: 10/22/2012; Ambient Temp: Meas. Ambient Temp(celsius)- 23° C; Tissue Temp: Tissue Temp(celsius)- 21° C

Probe: EX3DV4 - SN3693; ConvF(8.99, 8.99, 8.99); Calibrated: 8/20/2012;
Sensor-Surface: 4mm (Mechanical Surface Detection)
Electronics: DAE4 Sn759; Calibrated: 8/15/2012
Phantom: ELI 4.0; Type: QDOVA001BA; Serial: 1065
Measurement SW: DASY52, Version 52.8 (2); SEMCAD X Version 14.6.6 (6824)

Procedure Notes:

Standard Antenna 750 MHz Face/Channel 1/Area Scan (61x261x1): Interpolated grid: dx=1.500 mm, dy=1.500 mm

[Info: Interpolated medium parameters used for SAR evaluation.](#)

Maximum value of SAR (interpolated) = 1.68 W/kg

Standard Antenna 750 MHz Face/Channel 1/Zoom Scan (5x5x7)/Cube 0: Measurement grid: dx=8mm, dy=8mm, dz=5mm

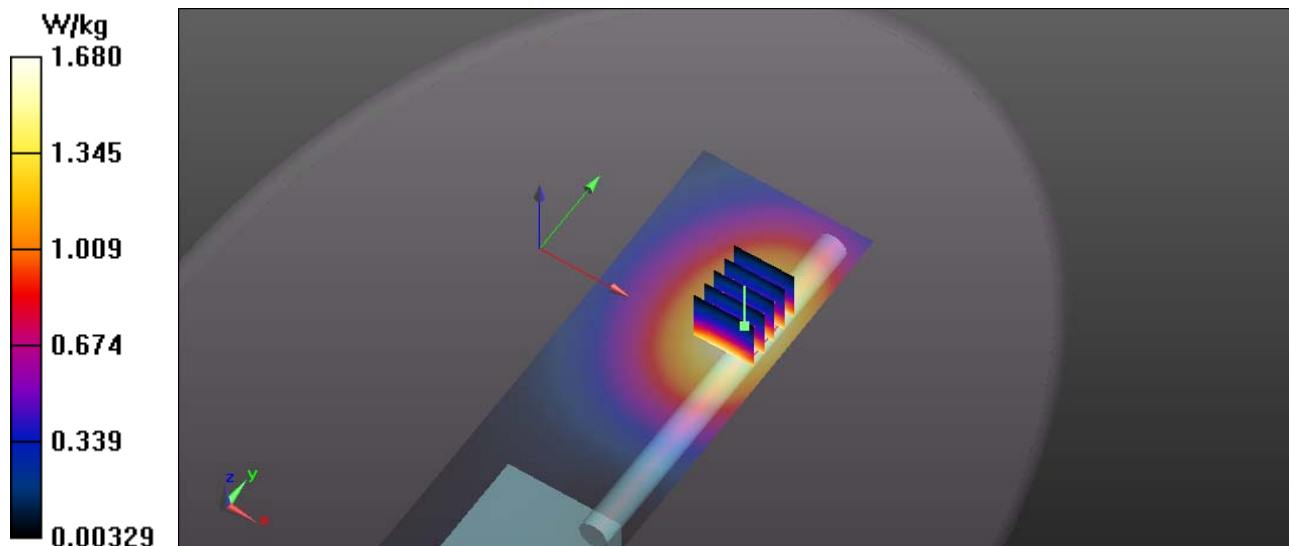
Reference Value = 7.702 V/m; Power Drift = -0.47 dB

Peak SAR (extrapolated) = 2.094 mW/g

SAR(1 g) = 1.61 mW/g; SAR(10 g) = 1.18 mW/g

[Info: Interpolated medium parameters used for SAR evaluation.](#)

Maximum value of SAR (measured) = 1.70 W/kg



RF Exposure Lab

DUT: Viking VP800; Type: PTT; Serial: 517001211520028

Communication System: FM; Frequency: 851.013 MHz; Duty Cycle: 1:1
Medium: HSL900; Medium parameters used (interpolated): $f = 851.013 \text{ MHz}$; $\sigma = 0.941 \text{ mho/m}$; $\epsilon_r = 42.481$; $\rho = 1000 \text{ kg/m}^3$
Phantom section: Flat Section

Test Date: Date: 9/26/2012; Ambient Temp: Meas. Ambient Temp(celsius)- 23° C; Tissue Temp: Tissue Temp(celsius)- 21° C
Probe: EX3DV4 - SN3693; ConvF(8.55, 8.55, 8.55); Calibrated: 8/20/2012;
Sensor-Surface: 4mm (Mechanical Surface Detection)
Electronics: DAE4 Sn759; Calibrated: 8/15/2012
Phantom: ELI 4.0; Type: QDOVA001BA; Serial: 1065
Measurement SW: DASY52, Version 52.8 (2); SEMCAD X Version 14.6.6 (6824)

Procedure Notes:

Standard Antenna 835 MHz Face/Channel 10/Area Scan (61x261x1): Interpolated grid: $dx=1.500 \text{ mm}$, $dy=1.500 \text{ mm}$

[Info: Interpolated medium parameters used for SAR evaluation.](#)

Maximum value of SAR (interpolated) = 3.94 W/kg

Standard Antenna 835 MHz Face/Channel 10/Zoom Scan (5x5x7)/Cube 0: Measurement grid: $dx=8\text{mm}$, $dy=8\text{mm}$, $dz=5\text{mm}$

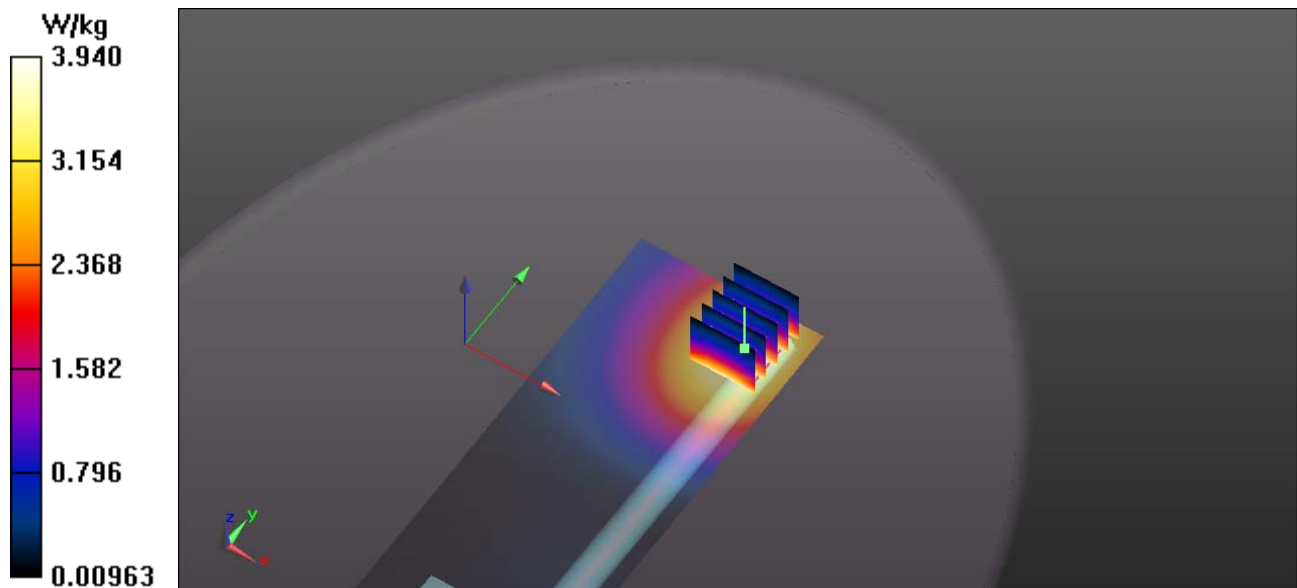
Reference Value = 7.785 V/m; Power Drift = 0.22 dB

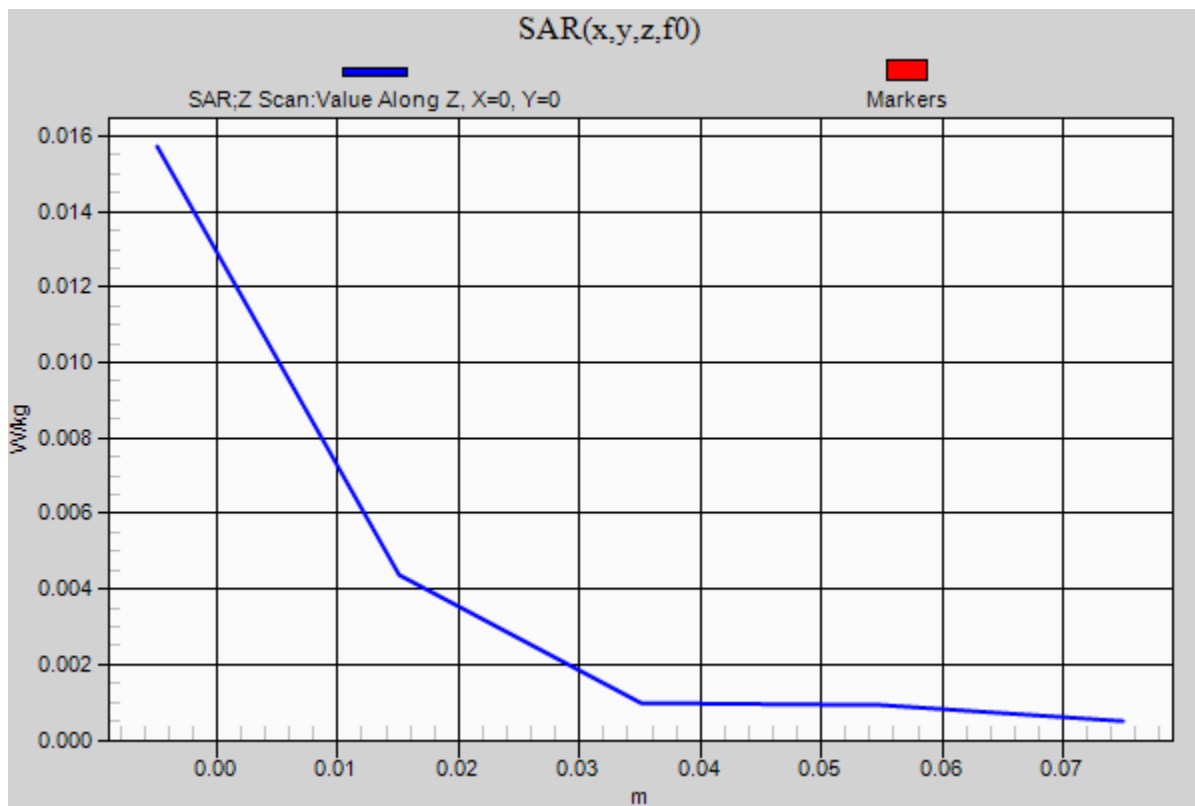
Peak SAR (extrapolated) = 4.850 mW/g

SAR(1 g) = 3.73 mW/g; SAR(10 g) = 2.74 mW/g

[Info: Interpolated medium parameters used for SAR evaluation.](#)

Maximum value of SAR (measured) = 3.94 W/kg





RF Exposure Lab

DUT: Viking VP800; Type: PTT; Serial: 517001211520028

Communication System: FM; Frequency: 764.013 MHz; Duty Cycle: 1:1
Medium: HSL750; Medium parameters used (interpolated): $f = 764.013$ MHz; $\sigma = 0.914$ mho/m; $\epsilon_r = 41.376$; $\rho = 1000$ kg/m³
Phantom section: Flat Section

Test Date: Date: 10/22/2012; Ambient Temp: Meas. Ambient Temp(celsius)- 23° C; Tissue Temp: Tissue Temp(celsius)- 21° C

Probe: EX3DV4 - SN3693; ConvF(8.99, 8.99, 8.99); Calibrated: 8/20/2012;
Sensor-Surface: 4mm (Mechanical Surface Detection)
Electronics: DAE4 Sn759; Calibrated: 8/15/2012
Phantom: ELI 4.0; Type: QDOVA001BA; Serial: 1065
Measurement SW: DASY52, Version 52.8 (2); SEMCAD X Version 14.6.6 (6824)

Procedure Notes:

Stubby Antenna 750 MHz Face/Channel 1/Area Scan (61x261x1): Interpolated grid: dx=1.500 mm, dy=1.500 mm

[Info: Interpolated medium parameters used for SAR evaluation.](#)

Maximum value of SAR (interpolated) = 2.23 W/kg

Stubby Antenna 750 MHz Face/Channel 1/Zoom Scan (5x5x7)/Cube 0: Measurement grid: dx=8mm, dy=8mm, dz=5mm

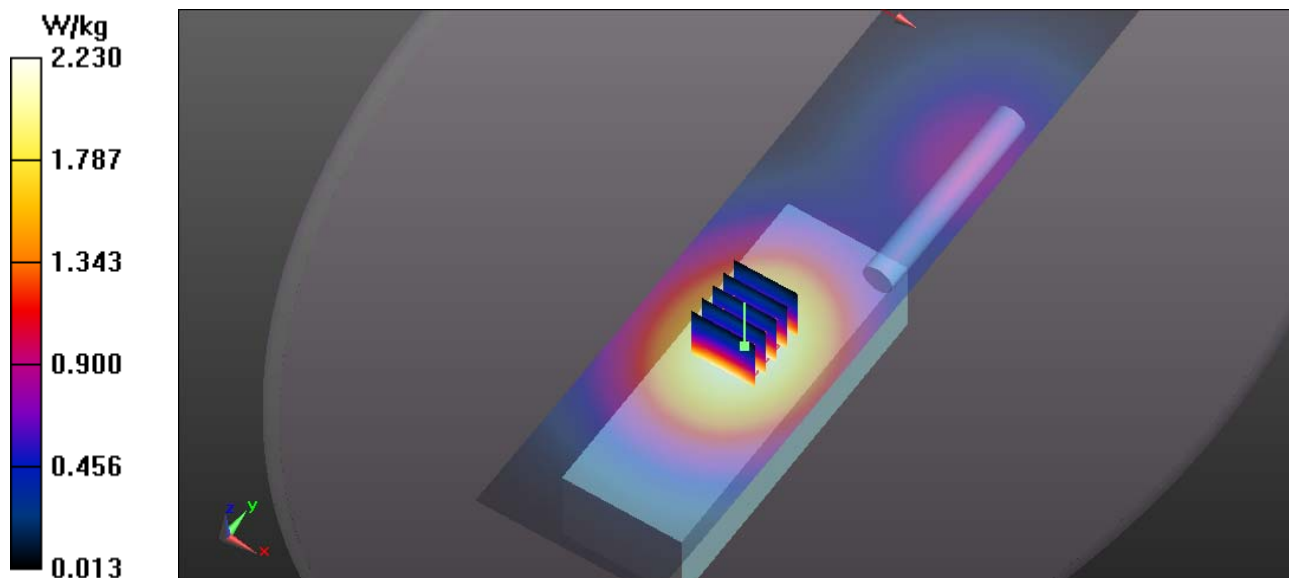
Reference Value = 25.631 V/m; Power Drift = 0.03 dB

Peak SAR (extrapolated) = 2.725 mW/g

SAR(1 g) = 2.11 mW/g; SAR(10 g) = 1.57 mW/g

[Info: Interpolated medium parameters used for SAR evaluation.](#)

Maximum value of SAR (measured) = 2.22 W/kg



RF Exposure Lab

DUT: Viking VP800; Type: PTT; Serial: 517001211520028

Communication System: FM; Frequency: 851.013 MHz; Duty Cycle: 1:1
Medium: HSL900; Medium parameters used (interpolated): $f = 851.013$ MHz; $\sigma = 0.941$ mho/m; $\epsilon_r = 42.481$; $\rho = 1000$ kg/m³
Phantom section: Flat Section

Test Date: Date: 9/26/2012; Ambient Temp: Meas. Ambient Temp(celsius)- 23° C; Tissue Temp: Tissue Temp(celsius)- 21° C
Probe: EX3DV4 - SN3693; ConvF(8.55, 8.55, 8.55); Calibrated: 8/20/2012;
Sensor-Surface: 4mm (Mechanical Surface Detection)
Electronics: DAE4 Sn759; Calibrated: 8/15/2012
Phantom: ELI 4.0; Type: QDOVA001BA; Serial: 1065
Measurement SW: DASY52, Version 52.8 (2); SEMCAD X Version 14.6.6 (6824)

Procedure Notes:

Stubby Antenna 835 MHz Face/Channel 10/Area Scan (61x261x1): Interpolated grid: dx=1.500 mm, dy=1.500 mm

[Info: Interpolated medium parameters used for SAR evaluation.](#)

Maximum value of SAR (interpolated) = 2.01 W/kg

Stubby Antenna 835 MHz Face/Channel 10/Zoom Scan (5x5x7)/Cube 0: Measurement grid: dx=8mm, dy=8mm, dz=5mm

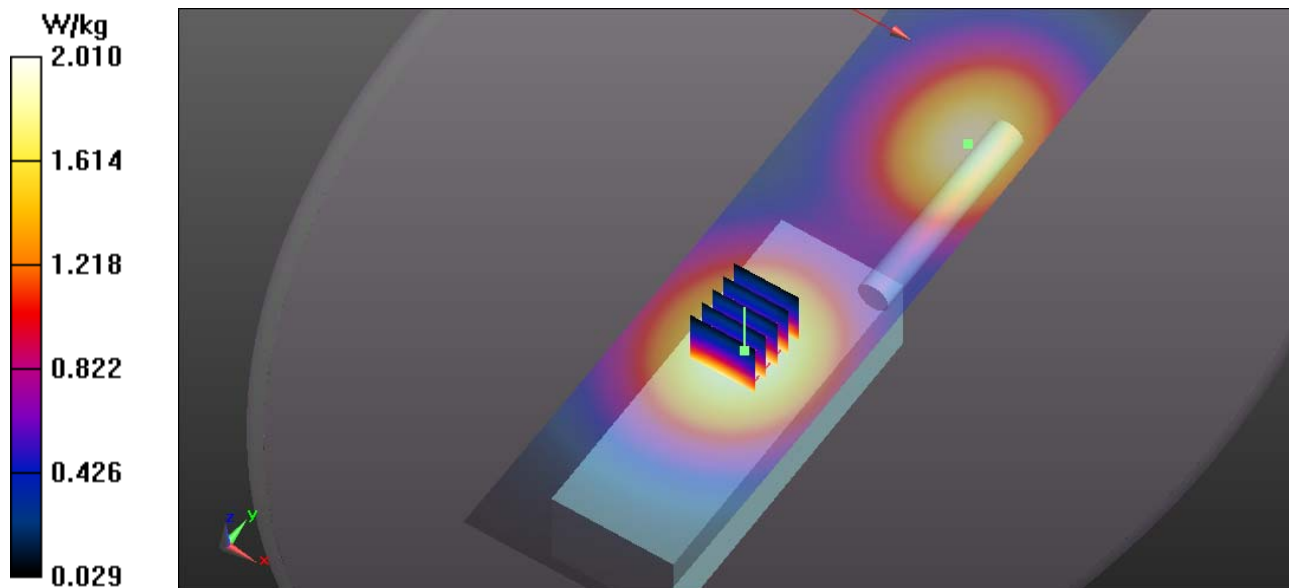
Reference Value = 27.117 V/m; Power Drift = 0.05 dB

Peak SAR (extrapolated) = 2.412 mW/g

SAR(1 g) = 1.9 mW/g; SAR(10 g) = 1.43 mW/g

[Info: Interpolated medium parameters used for SAR evaluation.](#)

Maximum value of SAR (measured) = 2.01 W/kg



RF Exposure Lab

DUT: Viking VP800; Type: PTT; Serial: 517001211520028

Communication System: FM; Frequency: 764.013 MHz; Duty Cycle: 1:1
Medium: MSL750; Medium parameters used (interpolated): $f = 764.013$ MHz; $\sigma = 0.954$ mho/m; $\epsilon_r = 54.604$; $\rho = 1000$ kg/m³
Phantom section: Flat Section

Test Date: Date: 10/22/2012; Ambient Temp: Meas. Ambient Temp(celsius)- 23° C; Tissue Temp: Tissue Temp(celsius)- 21° C

Probe: EX3DV4 - SN3693; ConvF(8.84, 8.84, 8.84); Calibrated: 8/20/2012;
Sensor-Surface: 4mm (Mechanical Surface Detection)
Electronics: DAE4 Sn759; Calibrated: 8/15/2012
Phantom: ELI 4.0; Type: QDOVA001BA; Serial: 1065
Measurement SW: DASY52, Version 52.8 (2); SEMCAD X Version 14.6.6 (6824)

Procedure Notes:

Standard Antenna 750 MHz Body/Channel 1/Area Scan (61x261x1): Interpolated grid: dx=1.500 mm, dy=1.500 mm

[Info: Interpolated medium parameters used for SAR evaluation.](#)

Maximum value of SAR (interpolated) = 2.05 W/kg

Standard Antenna 750 MHz Body/Channel 1/Zoom Scan (5x5x7)/Cube 0: Measurement grid: dx=8mm, dy=8mm, dz=5mm

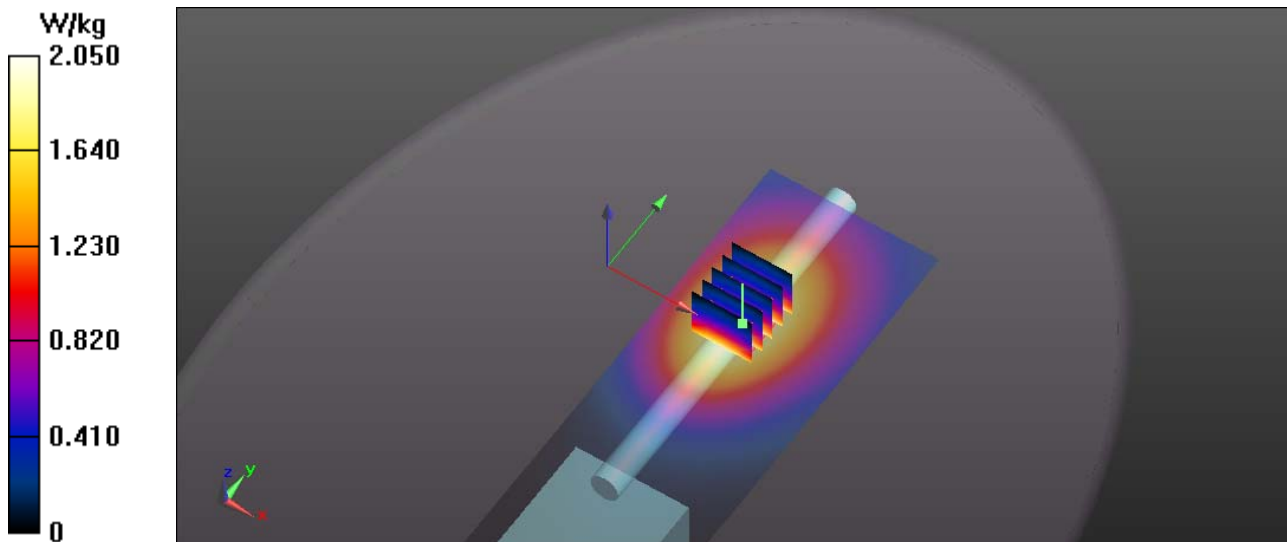
Reference Value = 7.291 V/m; Power Drift = 1.20 dB

Peak SAR (extrapolated) = 2.469 mW/g

SAR(1 g) = 1.9 mW/g; SAR(10 g) = 1.41 mW/g

[Info: Interpolated medium parameters used for SAR evaluation.](#)

Maximum value of SAR (measured) = 2.01 W/kg



RF Exposure Lab

DUT: Viking VP800; Type: PTT; Serial: 517001211520028

Communication System: FM; Frequency: 851.013 MHz; Duty Cycle: 1:1
Medium: MSL900; Medium parameters used (interpolated): $f = 851.013 \text{ MHz}$; $\sigma = 1.04 \text{ mho/m}$; $\epsilon_r = 56.588$; $\rho = 1000 \text{ kg/m}^3$
Phantom section: Flat Section

Test Date: Date: 9/26/2012; Ambient Temp: Meas. Ambient Temp(celsius)- 23° C; Tissue Temp: Tissue Temp(celsius)- 21° C
Probe: EX3DV4 - SN3693; ConvF(8.87, 8.87, 8.87); Calibrated: 8/20/2012;
Sensor-Surface: 4mm (Mechanical Surface Detection)
Electronics: DAE4 Sn759; Calibrated: 8/15/2012
Phantom: ELI 4.0; Type: QDOVA001BA; Serial: 1065
Measurement SW: DASY52, Version 52.8 (2); SEMCAD X Version 14.6.6 (6824)

Procedure Notes:

Standard Antenna 835 MHz Body/Channel 10/Area Scan (61x261x1): Interpolated grid: dx=1.500 mm, dy=1.500 mm

[Info: Interpolated medium parameters used for SAR evaluation.](#)

Maximum value of SAR (interpolated) = 3.16 W/kg

Standard Antenna 835 MHz Body/Channel 10/Zoom Scan (5x5x7)/Cube 0: Measurement grid: dx=8mm, dy=8mm, dz=5mm

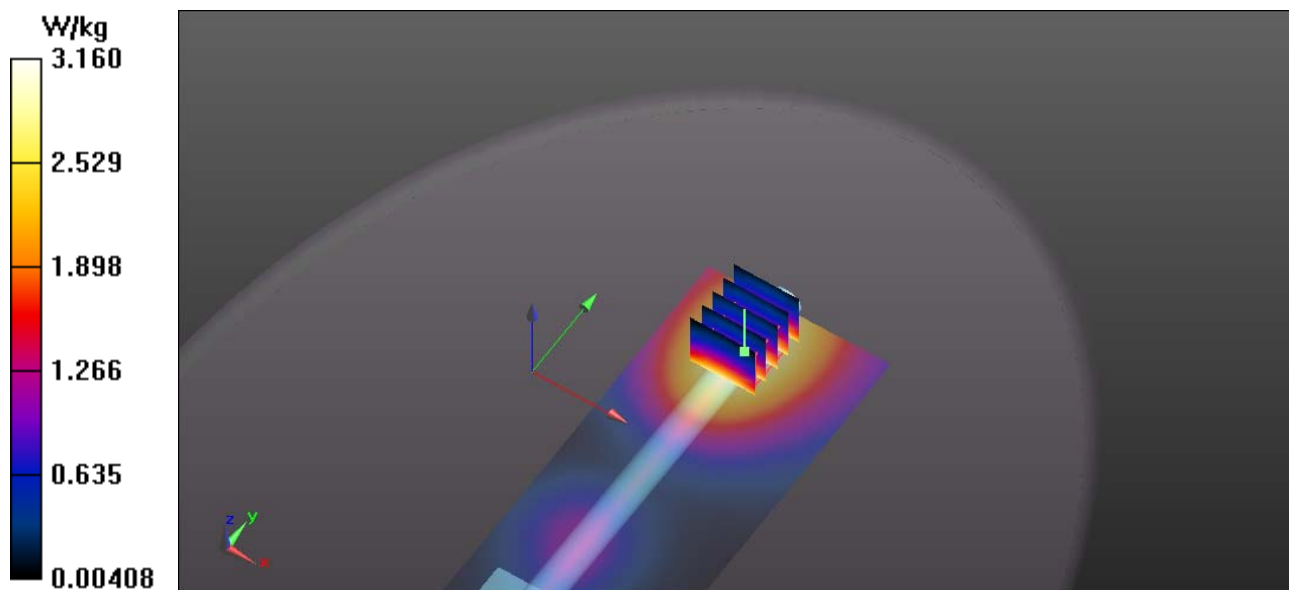
Reference Value = 17.150 V/m; Power Drift = 0.01 dB

Peak SAR (extrapolated) = 3.926 mW/g

SAR(1 g) = 2.99 mW/g; SAR(10 g) = 2.22 mW/g

[Info: Interpolated medium parameters used for SAR evaluation.](#)

Maximum value of SAR (measured) = 3.15 W/kg



RF Exposure Lab

DUT: Viking VP800; Type: PTT; Serial: 517001211520028

Communication System: FM; Frequency: 764.013 MHz; Duty Cycle: 1:1
Medium: MSL750; Medium parameters used (interpolated): $f = 764.013 \text{ MHz}$; $\sigma = 0.954 \text{ mho/m}$; $\epsilon_r = 54.604$; $\rho = 1000 \text{ kg/m}^3$
Phantom section: Flat Section

Test Date: Date: 10/22/2012; Ambient Temp: Meas. Ambient Temp(celsius)- 23° C; Tissue Temp: Tissue Temp(celsius)- 21° C

Probe: EX3DV4 - SN3693; ConvF(8.84, 8.84, 8.84); Calibrated: 8/20/2012;
Sensor-Surface: 4mm (Mechanical Surface Detection)
Electronics: DAE4 Sn759; Calibrated: 8/15/2012
Phantom: ELI 4.0; Type: QDOVA001BA; Serial: 1065
Measurement SW: DASY52, Version 52.8 (2); SEMCAD X Version 14.6.6 (6824)

Procedure Notes:

Stubby Antenna 750 MHz Body/Channel 1/Area Scan (61x261x1): Interpolated grid: $dx=1.500 \text{ mm}$, $dy=1.500 \text{ mm}$

[Info: Interpolated medium parameters used for SAR evaluation.](#)

Maximum value of SAR (interpolated) = 5.14 W/kg

Stubby Antenna 750 MHz Body/Channel 1/Zoom Scan (5x5x7)/Cube 0: Measurement grid: $dx=8\text{mm}$, $dy=8\text{mm}$, $dz=5\text{mm}$

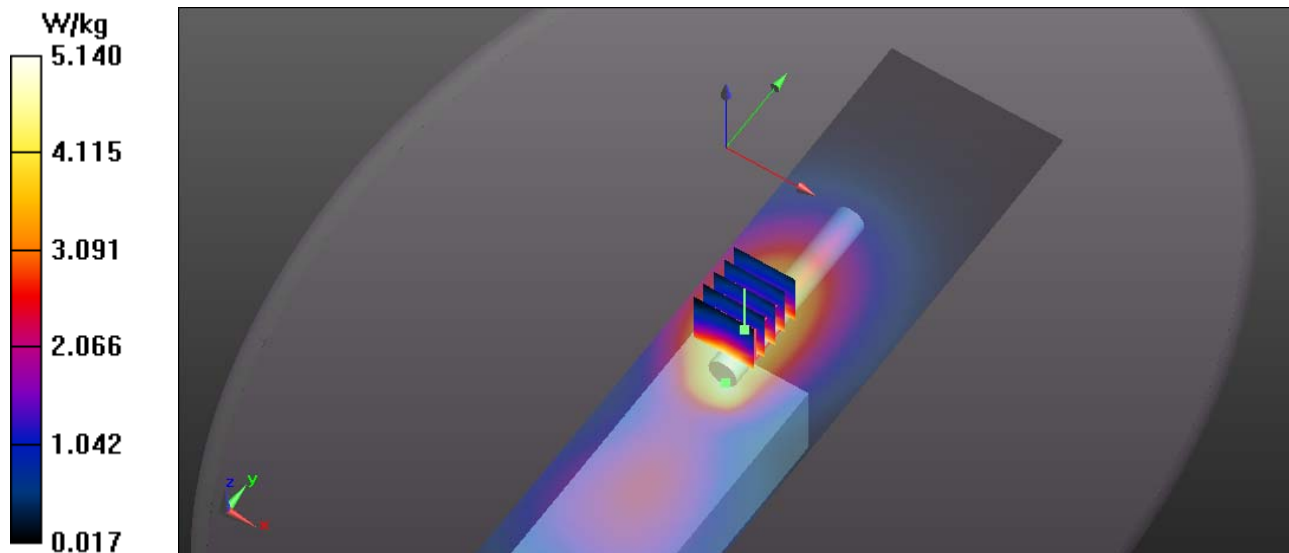
Reference Value = 71.248 V/m; Power Drift = -0.45 dB

Peak SAR (extrapolated) = 6.338 mW/g

SAR(1 g) = 4.76 mW/g; SAR(10 g) = 3.43 mW/g

[Info: Interpolated medium parameters used for SAR evaluation.](#)

Maximum value of SAR (measured) = 5.05 W/kg



RF Exposure Lab

DUT: Viking VP800; Type: PTT; Serial: 517001211520028

Communication System: FM; Frequency: 851.013 MHz; Duty Cycle: 1:1
Medium: MSL900; Medium parameters used (interpolated): $f = 851.013 \text{ MHz}$; $\sigma = 1.04 \text{ mho/m}$; $\epsilon_r = 56.588$; $\rho = 1000 \text{ kg/m}^3$
Phantom section: Flat Section

Test Date: Date: 9/26/2012; Ambient Temp: Meas. Ambient Temp(celsius)- 23° C; Tissue Temp: Tissue Temp(celsius)- 21° C
Probe: EX3DV4 - SN3693; ConvF(8.87, 8.87, 8.87); Calibrated: 8/20/2012;
Sensor-Surface: 4mm (Mechanical Surface Detection)
Electronics: DAE4 Sn759; Calibrated: 8/15/2012
Phantom: ELI 4.0; Type: QDOVA001BA; Serial: 1065
Measurement SW: DASY52, Version 52.8 (2); SEMCAD X Version 14.6.6 (6824)

Procedure Notes:

Stubby Antenna 835 MHz Body/Channel 10/Area Scan (61x261x1): Interpolated grid: dx=1.500 mm, dy=1.500 mm

[Info: Interpolated medium parameters used for SAR evaluation.](#)

Maximum value of SAR (interpolated) = 5.62 W/kg

Stubby Antenna 835 MHz Body/Channel 10/Zoom Scan (5x5x7)/Cube 0: Measurement grid: dx=8mm, dy=8mm, dz=5mm

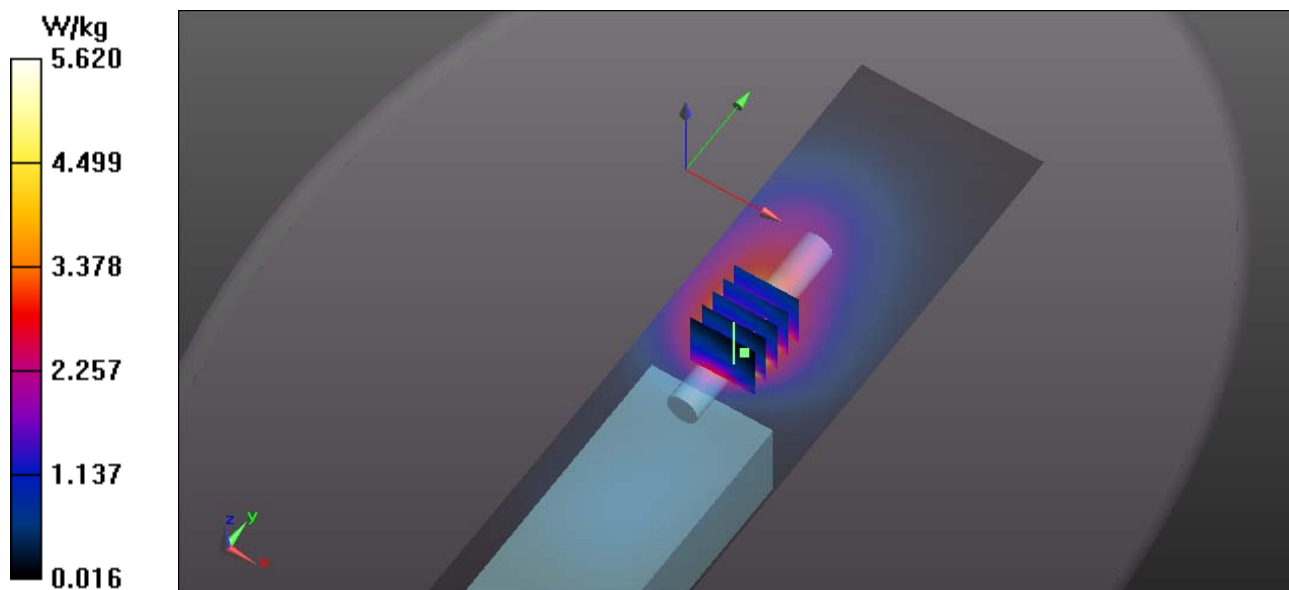
Reference Value = 18.270 V/m; Power Drift = -0.04 dB

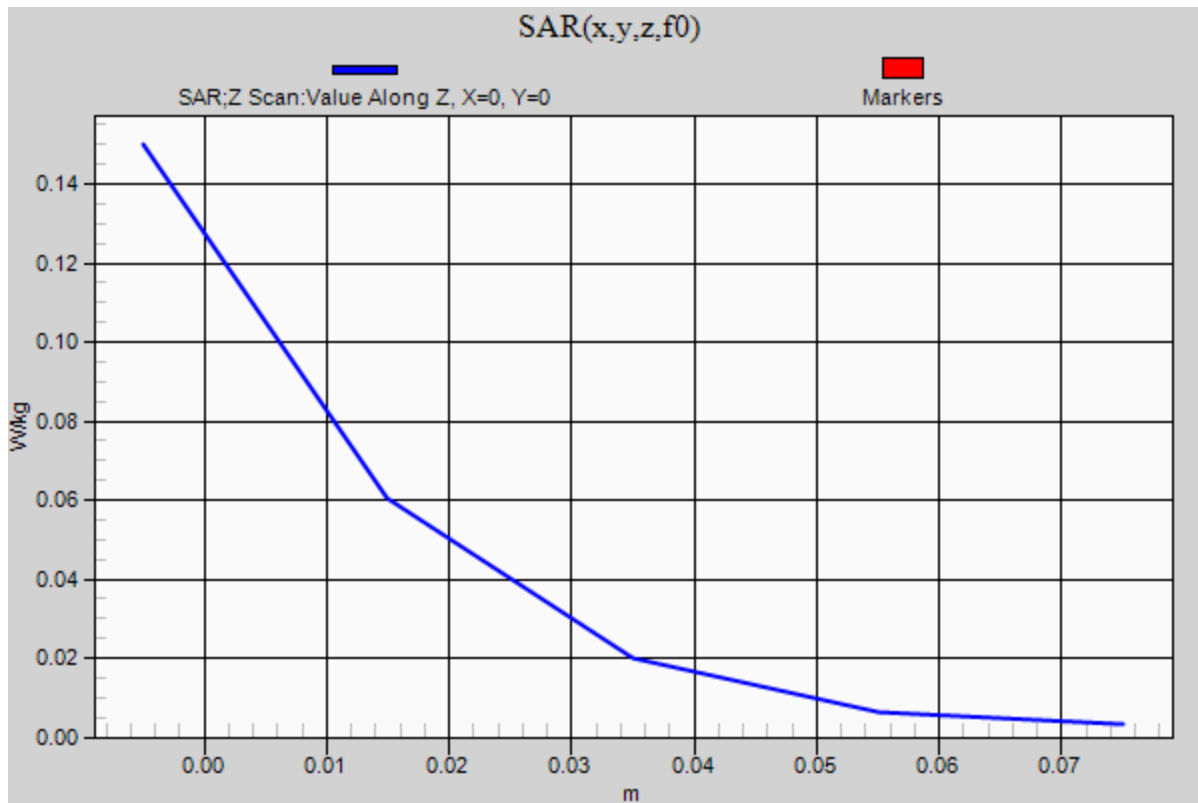
Peak SAR (extrapolated) = 8.745 mW/g

SAR(1 g) = 4.87 mW/g; SAR(10 g) = 3.08 mW/g

[Info: Interpolated medium parameters used for SAR evaluation.](#)

Maximum value of SAR (measured) = 5.36 W/kg





Appendix C – SAR Test Setup Photos



Handset with Standard Antenna Face Configuration



Handset with Stubby Antenna Face Configuration



Handset with Standard Antenna Body Configuration



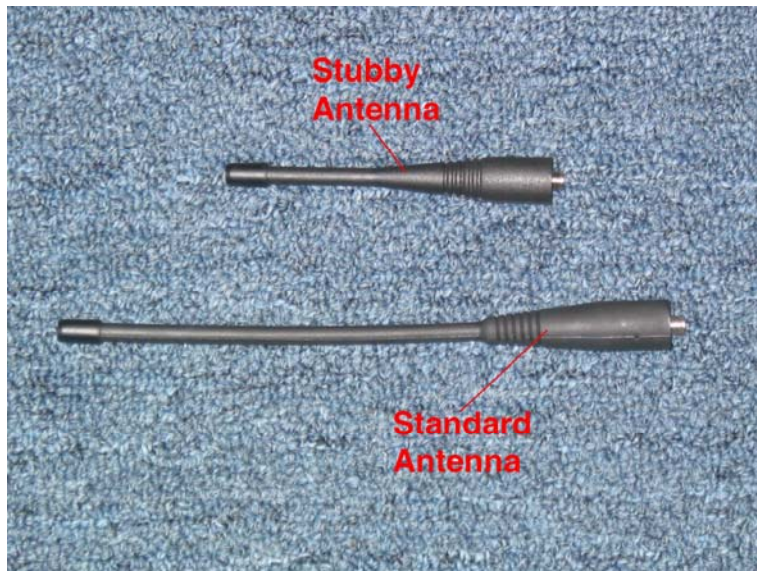
Handset with Stubby Antenna Body Configuration



Front of Device



Back of Device



Antennas



Battery



Standard Microphone

Appendix D – Probe Calibration Data Sheets



Accredited by the Swiss Accreditation Service (SAS)

Accreditation No.: **SCS 108**

The Swiss Accreditation Service is one of the signatories to the EA
Multilateral Agreement for the recognition of calibration certificates

Client **RF Exposure Lab**

Certificate No: **EX3-3693_Aug12**

CALIBRATION CERTIFICATE

Object **EX3DV4 - SN:3693**

Calibration procedure(s) **QA CAL-01.v8, QA CAL-14.v3, QA CAL-23.v4, QA CAL-25.v4**
Calibration procedure for dosimetric E-field probes

Calibration date: **August 20, 2012**

This calibration certificate documents the traceability to national standards, which realize the physical units of measurements (SI).
The measurements and the uncertainties with confidence probability are given on the following pages and are part of the certificate.

All calibrations have been conducted in the closed laboratory facility: environment temperature (22 ± 3)°C and humidity < 70%.

Calibration Equipment used (M&TE critical for calibration)

Primary Standards	ID	Cal Date (Certificate No.)	Scheduled Calibration
Power meter E4419B	GB41293874	29-Mar-12 (No. 217-01508)	Apr-13
Power sensor E4412A	MY41498087	29-Mar-12 (No. 217-01508)	Apr-13
Reference 3 dB Attenuator	SN: S5054 (3c)	27-Mar-12 (No. 217-01531)	Apr-13
Reference 20 dB Attenuator	SN: S5086 (20b)	27-Mar-12 (No. 217-01529)	Apr-13
Reference 30 dB Attenuator	SN: S5129 (30b)	27-Mar-12 (No. 217-01532)	Apr-13
Reference Probe ES3DV2	SN: 3013	29-Dec-11 (No. ES3-3013_Dec11)	Dec-12
DAE4	SN: 660	20-Jun-12 (No. DAE4-660_Jun12)	Jun-13
Secondary Standards	ID	Check Date (in house)	Scheduled Check
RF generator HP 8648C	US3642U01700	4-Aug-99 (in house check Apr-11)	In house check: Apr-13
Network Analyzer HP 8753E	US37390585	18-Oct-01 (in house check Oct-11)	In house check: Oct-12

	Name	Function	Signature
Calibrated by:	Jeton Kastrati	Laboratory Technician	
Approved by:	Katja Pokovic	Technical Manager	
Issued: August 20, 2012			
This calibration certificate shall not be reproduced except in full without written approval of the laboratory.			



Accredited by the Swiss Accreditation Service (SAS)

Accreditation No.: **SCS 108**

The Swiss Accreditation Service is one of the signatories to the EA
 Multilateral Agreement for the recognition of calibration certificates

Glossary:

TSL	tissue simulating liquid
NORM _{x,y,z}	sensitivity in free space
ConvF	sensitivity in TSL / NORM _{x,y,z}
DCP	diode compression point
CF	crest factor (1/duty_cycle) of the RF signal
A, B, C	modulation dependent linearization parameters
Polarization ϕ	ϕ rotation around probe axis
Polarization ϑ	ϑ rotation around an axis that is in the plane normal to probe axis (at measurement center), i.e., $\vartheta = 0$ is normal to probe axis

Calibration is Performed According to the Following Standards:

- IEEE Std 1528-2003, "IEEE Recommended Practice for Determining the Peak Spatial-Averaged Specific Absorption Rate (SAR) in the Human Head from Wireless Communications Devices: Measurement Techniques", December 2003
- IEC 62209-1, "Procedure to measure the Specific Absorption Rate (SAR) for hand-held devices used in close proximity to the ear (frequency range of 300 MHz to 3 GHz)", February 2005

Methods Applied and Interpretation of Parameters:

- NORM_{x,y,z}**: Assessed for E-field polarization $\vartheta = 0$ ($f \leq 900$ MHz in TEM-cell; $f > 1800$ MHz: R22 waveguide). NORM_{x,y,z} are only intermediate values, i.e., the uncertainties of NORM_{x,y,z} does not affect the E²-field uncertainty inside TSL (see below **ConvF**).
- NORM(f)_{x,y,z}** = NORM_{x,y,z} * frequency_response (see Frequency Response Chart). This linearization is implemented in DASY4 software versions later than 4.2. The uncertainty of the frequency response is included in the stated uncertainty of **ConvF**.
- DCP_{x,y,z}**: DCP are numerical linearization parameters assessed based on the data of power sweep with CW signal (no uncertainty required). DCP does not depend on frequency nor media.
- PAR**: PAR is the Peak to Average Ratio that is not calibrated but determined based on the signal characteristics
- A_{x,y,z}; B_{x,y,z}; C_{x,y,z}; VR_{x,y,z}**: A, B, C are numerical linearization parameters assessed based on the data of power sweep for specific modulation signal. The parameters do not depend on frequency nor media. VR is the maximum calibration range expressed in RMS voltage across the diode.
- ConvF and Boundary Effect Parameters**: Assessed in flat phantom using E-field (or Temperature Transfer Standard for $f \leq 800$ MHz) and inside waveguide using analytical field distributions based on power measurements for $f > 800$ MHz. The same setups are used for assessment of the parameters applied for boundary compensation (alpha, depth) of which typical uncertainty values are given. These parameters are used in DASY4 software to improve probe accuracy close to the boundary. The sensitivity in TSL corresponds to NORM_{x,y,z} * ConvF whereby the uncertainty corresponds to that given for **ConvF**. A frequency dependent **ConvF** is used in DASY version 4.4 and higher which allows extending the validity from ± 50 MHz to ± 100 MHz.
- Spherical isotropy (3D deviation from isotropy)**: in a field of low gradients realized using a flat phantom exposed by a patch antenna.
- Sensor Offset**: The sensor offset corresponds to the offset of virtual measurement center from the probe tip (on probe axis). No tolerance required.

Probe EX3DV4

SN:3693

Manufactured: April 22, 2009
Calibrated: August 20, 2012

Calibrated for DASY/EASY Systems
(Note: non-compatible with DASY2 system!)

DASY/EASY - Parameters of Probe: EX3DV4 - SN:3693

Basic Calibration Parameters

	Sensor X	Sensor Y	Sensor Z	Unc (k=2)
Norm ($\mu\text{V}/(\text{V}/\text{m})^2$) ^A	0.49	0.48	0.46	± 10.1 %
DCP (mV) ^B	98.3	100.5	98.2	

Modulation Calibration Parameters

UID	Communication System Name	PAR		A dB	B dB	C dB	VR mV	Unc ^E (k=2)
0	CW	0.00	X	0.00	0.00	1.00	161.4	±3.0 %
			Y	0.00	0.00	1.00	154.4	
			Z	0.00	0.00	1.00	158.9	

The reported uncertainty of measurement is stated as the standard uncertainty of measurement multiplied by the coverage factor k=2, which for a normal distribution corresponds to a coverage probability of approximately 95%.

^A The uncertainties of NormX,Y,Z do not affect the E²-field uncertainty inside TSL (see Pages 5 and 6).

^B Numerical linearization parameter: uncertainty not required.

^E Uncertainty is determined using the max. deviation from linear response applying rectangular distribution and is expressed for the square of the field value.

DASY/EASY - Parameters of Probe: EX3DV4 - SN:3693

Calibration Parameter Determined in Head Tissue Simulating Media

f (MHz) ^C	Relative Permittivity ^F	Conductivity (S/m) ^F	ConvF X	ConvF Y	ConvF Z	Alpha	Depth (mm)	Unct. (k=2)
750	41.9	0.89	8.99	8.99	8.99	0.23	1.20	± 12.0 %
835	41.5	0.90	8.55	8.55	8.55	0.18	1.56	± 12.0 %
1750	40.1	1.37	8.00	8.00	8.00	0.51	0.76	± 12.0 %
1900	40.0	1.40	7.67	7.67	7.67	0.75	0.63	± 12.0 %
2450	39.2	1.80	6.72	6.72	6.72	0.29	1.09	± 12.0 %
2550	39.1	1.91	6.55	6.55	6.55	0.39	0.93	± 12.0 %
5200	36.0	4.66	4.97	4.97	4.97	0.30	1.80	± 13.1 %
5300	35.9	4.76	4.78	4.78	4.78	0.30	1.80	± 13.1 %
5600	35.5	5.07	4.22	4.22	4.22	0.40	1.80	± 13.1 %
5800	35.3	5.27	4.34	4.34	4.34	0.40	1.80	± 13.1 %

^C Frequency validity of ± 100 MHz only applies for DASY v4.4 and higher (see Page 2), else it is restricted to ± 50 MHz. The uncertainty is the RSS of the ConvF uncertainty at calibration frequency and the uncertainty for the indicated frequency band.

^F At frequencies below 3 GHz, the validity of tissue parameters (ϵ and σ) can be relaxed to ± 10% if liquid compensation formula is applied to measured SAR values. At frequencies above 3 GHz, the validity of tissue parameters (ϵ and σ) is restricted to ± 5%. The uncertainty is the RSS of the ConvF uncertainty for indicated target tissue parameters.

DASY/EASY - Parameters of Probe: EX3DV4 - SN:3693

Calibration Parameter Determined in Body Tissue Simulating Media

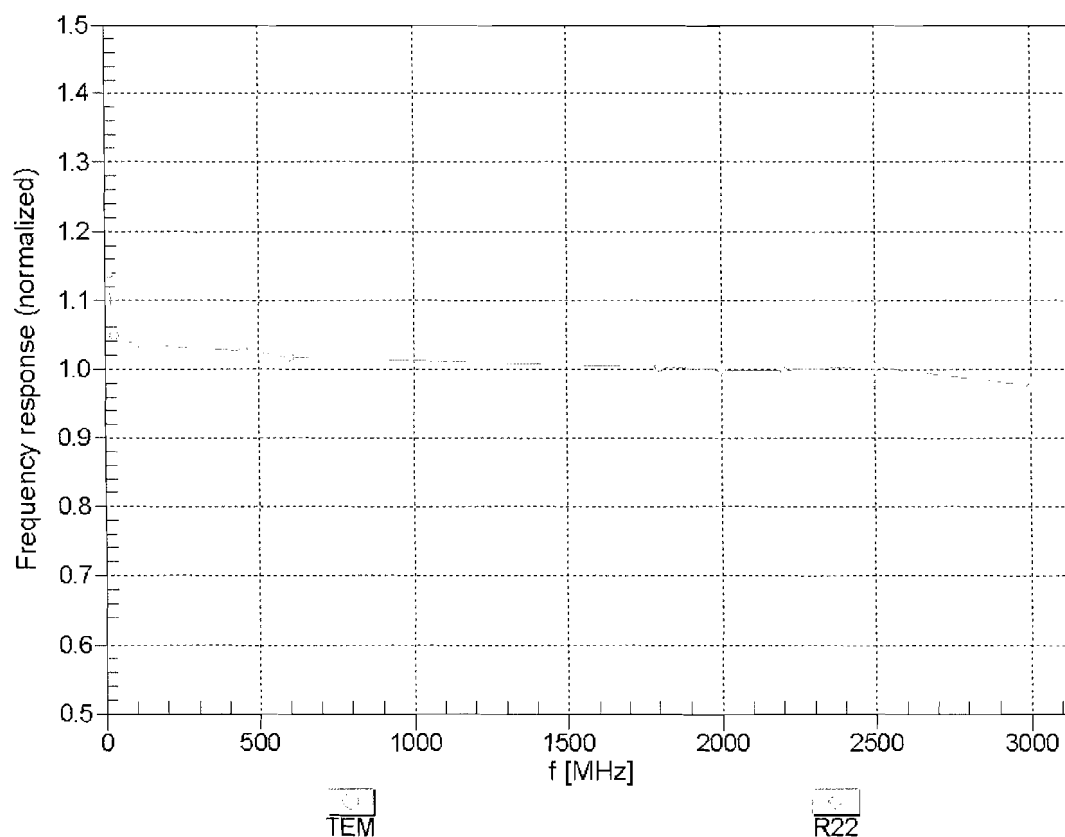
f (MHz) ^C	Relative Permittivity ^F	Conductivity (S/m) ^F	ConvF X	ConvF Y	ConvF Z	Alpha	Depth (mm)	Unct. (k=2)
750	55.5	0.96	8.84	8.84	8.84	0.29	1.09	± 12.0 %
835	55.2	0.97	8.87	8.87	8.87	0.60	0.71	± 12.0 %
1750	53.4	1.49	7.43	7.43	7.43	0.41	0.85	± 12.0 %
1900	53.3	1.52	7.13	7.13	7.13	0.41	0.82	± 12.0 %
2450	52.7	1.95	6.76	6.76	6.76	0.80	0.50	± 12.0 %
2550	52.6	2.09	6.75	6.75	6.75	0.80	0.50	± 12.0 %
5200	49.0	5.30	4.31	4.31	4.31	0.45	1.90	± 13.1 %
5300	48.9	5.42	4.24	4.24	4.24	0.40	1.90	± 13.1 %
5600	48.5	5.77	3.76	3.76	3.76	0.45	1.90	± 13.1 %
5800	48.2	6.00	4.08	4.08	4.08	0.50	1.90	± 13.1 %

^C Frequency validity of ± 100 MHz only applies for DASY v4.4 and higher (see Page 2), else it is restricted to ± 50 MHz. The uncertainty is the RSS of the ConvF uncertainty at calibration frequency and the uncertainty for the indicated frequency band.

^F At frequencies below 3 GHz, the validity of tissue parameters (ϵ and σ) can be relaxed to ± 10% if liquid compensation formula is applied to measured SAR values. At frequencies above 3 GHz, the validity of tissue parameters (ϵ and σ) is restricted to ± 5%. The uncertainty is the RSS of the ConvF uncertainty for indicated target tissue parameters.

Frequency Response of E-Field

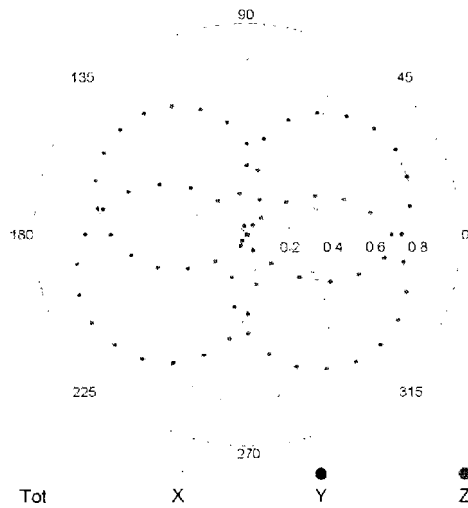
(TEM-Cell: ifi110 EXX, Waveguide: R22)



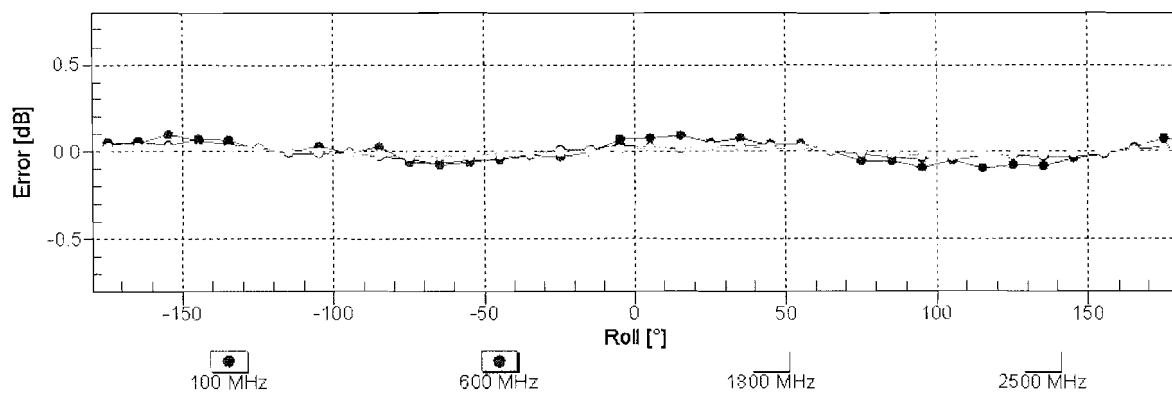
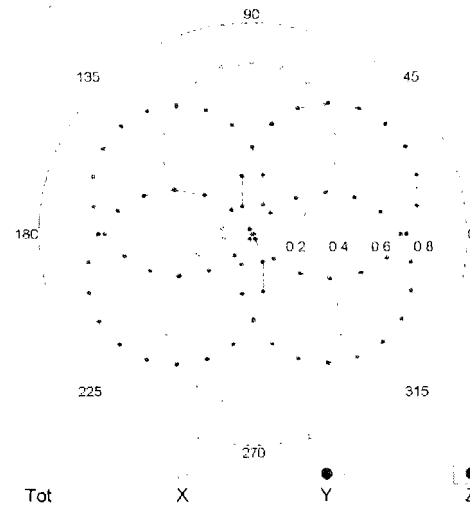
Uncertainty of Frequency Response of E-field: $\pm 6.3\%$ ($k=2$)

Receiving Pattern (ϕ), $\theta = 0^\circ$

f=600 MHz,TEM



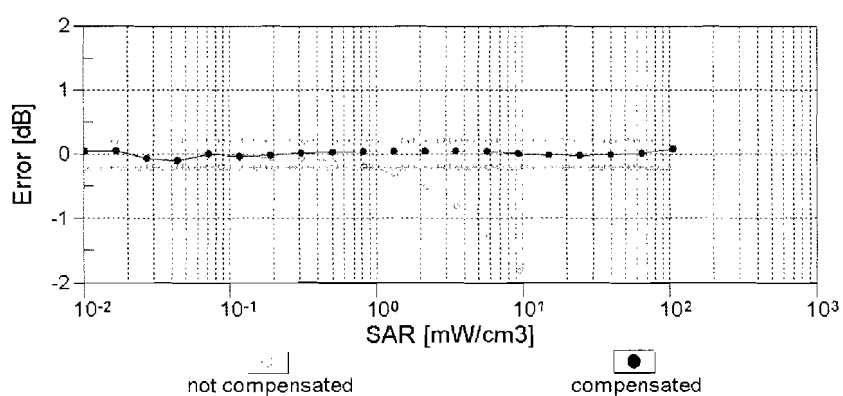
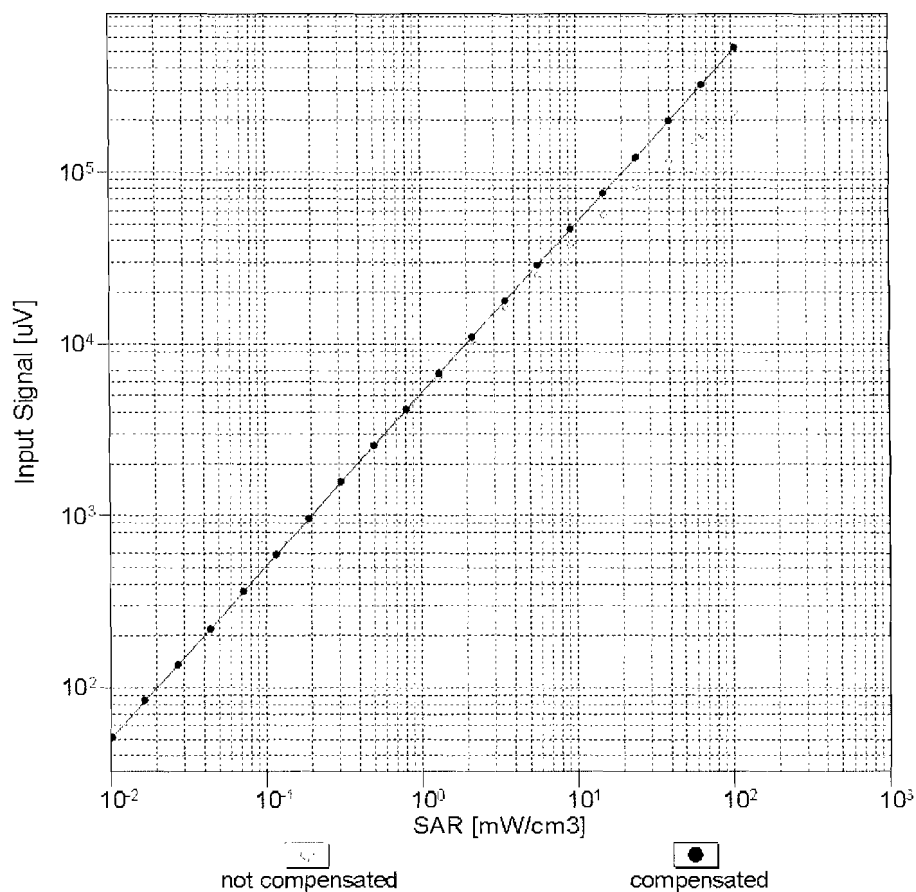
f=1800 MHz,R22



Uncertainty of Axial Isotropy Assessment: $\pm 0.5\%$ ($k=2$)

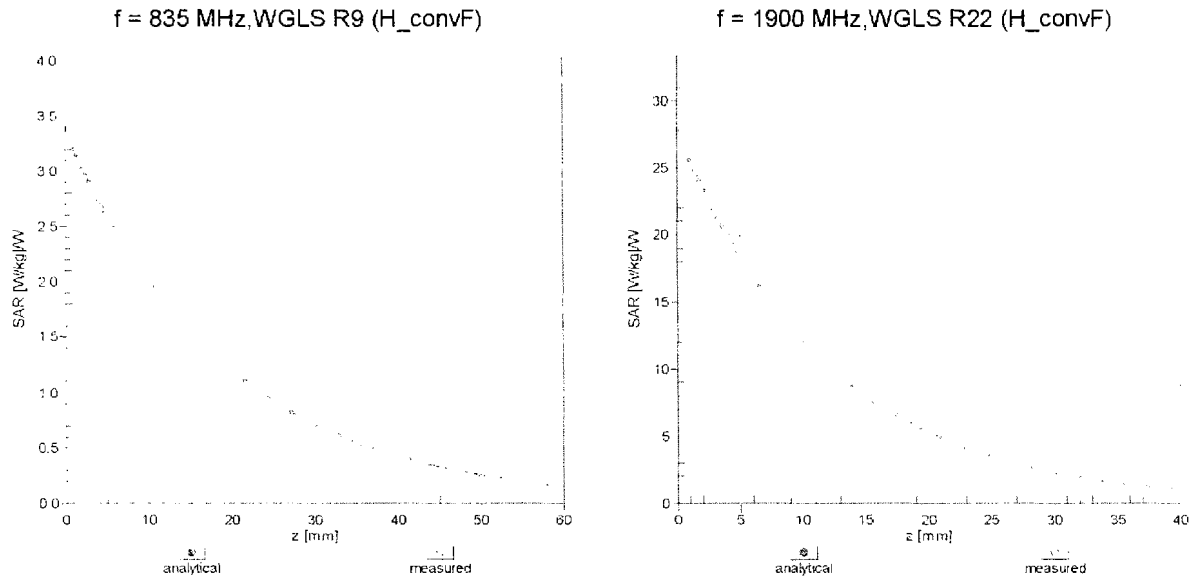
Dynamic Range f(SAR_{head})

(TEM cell , f = 900 MHz)



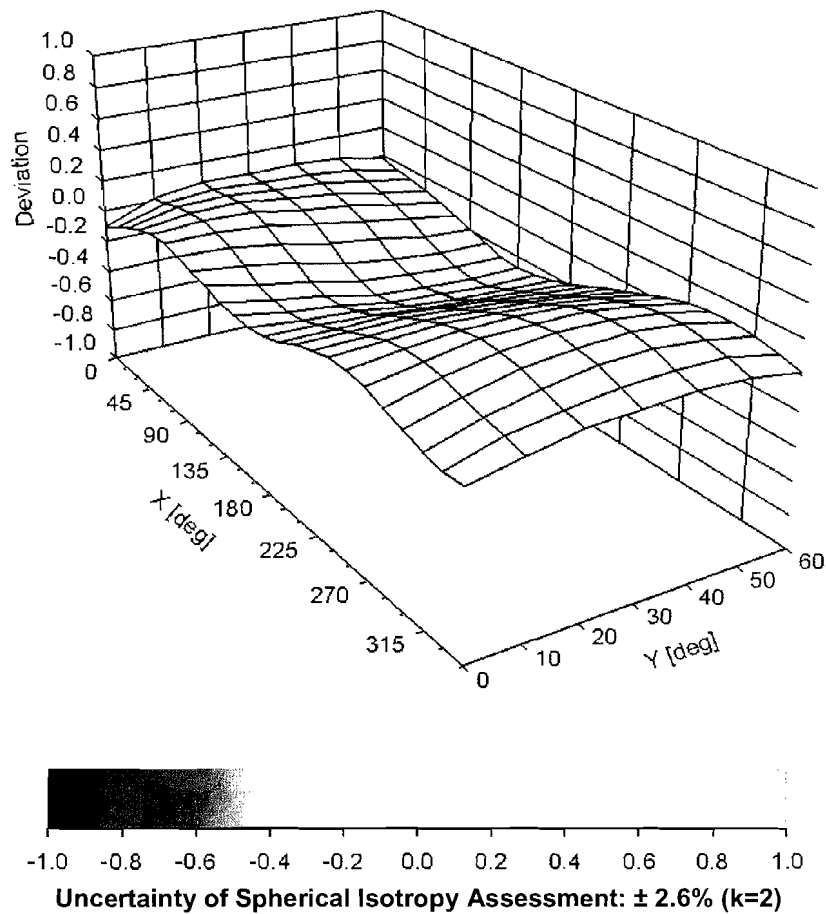
Uncertainty of Linearity Assessment: $\pm 0.6\%$ (k=2)

Conversion Factor Assessment



Deviation from Isotropy in Liquid

Error (ϕ , θ), $f = 900 \text{ MHz}$



DASY/EASY - Parameters of Probe: EX3DV4 - SN:3693

Other Probe Parameters

Sensor Arrangement	Triangular
Connector Angle (°)	155.3
Mechanical Surface Detection Mode	enabled
Optical Surface Detection Mode	disabled
Probe Overall Length	337 mm
Probe Body Diameter	10 mm
Tip Length	9 mm
Tip Diameter	2.5 mm
Probe Tip to Sensor X Calibration Point	1 mm
Probe Tip to Sensor Y Calibration Point	1 mm
Probe Tip to Sensor Z Calibration Point	1 mm
Recommended Measurement Distance from Surface	2 mm

Appendix E – Dipole Calibration Data Sheets



Accredited by the Swiss Accreditation Service (SAS)
The Swiss Accreditation Service is one of the signatories to the EA
Multilateral Agreement for the recognition of calibration certificates

Accreditation No.: SCS 108

Client RF Exposure Lab

Certificate No: D750V3-1016_Nov10/2

CALIBRATION CERTIFICATE (Replacement of No:D750V3-1016_Nov10)

Object D750V3 - SN: 1016

Calibration procedure(s) QA CAL-05.v7
Calibration procedure for dipole validation kits

Calibration date: November 02, 2010

This calibration certificate documents the traceability to national standards, which realize the physical units of measurements (SI).
The measurements and the uncertainties with confidence probability are given on the following pages and are part of the certificate.

All calibrations have been conducted in the closed laboratory facility: environment temperature (22 ± 3)°C and humidity < 70%.

Calibration Equipment used (M&TE critical for calibration)

Primary Standards	ID #	Cal Date (Certificate No.)	Scheduled Calibration
Power meter EPM-442A	GB37480704	06-Oct-10 (No. 217-01266)	Oct-11
Power sensor HP 8481A	US37292783	06-Oct-10 (No. 217-01266)	Oct-11
Reference 20 dB Attenuator	SN: 5086 (20g)	30-Mar-10 (No. 217-01158)	Mar-11
Type-N mismatch combination	SN: 5047.2 / 06327	30-Mar-10 (No. 217-01162)	Mar-11
Reference Probe ES3DV3	SN: 3205	30-Apr-10 (No. ES3-3205_Apr10)	Apr-11
DAE4	SN: 601	10-Jun-10 (No. DAE4-601_Jun10)	Jun-11
Secondary Standards	ID #	Check Date (in house)	Scheduled Check
Power sensor HP 8481A	MY41092317	18-Oct-02 (in house check Oct-09)	In house check: Oct-11
RF generator R&S SMT-06	100005	4-Aug-99 (in house check Oct-09)	In house check: Oct-11
Network Analyzer HP 8753E	US37390585 S4206	18-Oct-01 (in house check Oct-10)	In house check: Oct-11

Calibrated by:	Name Jeton Kastrati	Function Laboratory Technician	Signature
Approved by:	Katja Pokovic	Technical Manager	

Issued: June 12, 2012

This calibration certificate shall not be reproduced except in full without written approval of the laboratory.



Accredited by the Swiss Accreditation Service (SAS)

The Swiss Accreditation Service is one of the signatories to the EA
Multilateral Agreement for the recognition of calibration certificates

Accreditation No.: **SCS 108**

Glossary:

TSL	tissue simulating liquid
ConvF	sensitivity in TSL / NORM x,y,z
N/A	not applicable or not measured

Calibration is Performed According to the Following Standards:

- IEEE Std 1528-2003, "IEEE Recommended Practice for Determining the Peak Spatial-Averaged Specific Absorption Rate (SAR) in the Human Head from Wireless Communications Devices: Measurement Techniques", December 2003
- IEC 62209-1, "Procedure to measure the Specific Absorption Rate (SAR) for hand-held devices used in close proximity to the ear (frequency range of 300 MHz to 3 GHz)", February 2005
- Federal Communications Commission Office of Engineering & Technology (FCC OET), "Evaluating Compliance with FCC Guidelines for Human Exposure to Radiofrequency Electromagnetic Fields; Additional Information for Evaluating Compliance of Mobile and Portable Devices with FCC Limits for Human Exposure to Radiofrequency Emissions", Supplement C (Edition 01-01) to Bulletin 65

Additional Documentation:

- DASY4/5 System Handbook

Methods Applied and Interpretation of Parameters:

- Measurement Conditions:** Further details are available from the Validation Report at the end of the certificate. All figures stated in the certificate are valid at the frequency indicated.
- Antenna Parameters with TSL:** The dipole is mounted with the spacer to position its feed point exactly below the center marking of the flat phantom section, with the arms oriented parallel to the body axis.
- Feed Point Impedance and Return Loss:** These parameters are measured with the dipole positioned under the liquid filled phantom. The impedance stated is transformed from the measurement at the SMA connector to the feed point. The Return Loss ensures low reflected power. No uncertainty required.
- Electrical Delay:** One-way delay between the SMA connector and the antenna feed point. No uncertainty required.
- SAR measured:** SAR measured at the stated antenna input power.
- SAR normalized:** SAR as measured, normalized to an input power of 1 W at the antenna connector.
- SAR for nominal TSL parameters:** The measured TSL parameters are used to calculate the nominal SAR result.

Measurement Conditions

DASY system configuration, as far as not given on page 1.

DASY Version	DASY5	V52.2
Extrapolation	Advanced Extrapolation	
Phantom	Modular Flat Phantom V4.9	
Distance Dipole Center - TSL	15 mm	with Spacer
Zoom Scan Resolution	dx, dy, dz = 5 mm	
Frequency	750 MHz \pm 1 MHz	

Head TSL parameters

The following parameters and calculations were applied.

	Temperature	Permittivity	Conductivity
Nominal Head TSL parameters	22.0 °C	41.9	0.89 mho/m
Measured Head TSL parameters	(22.0 \pm 0.2) °C	42.6 \pm 6 %	0.92 mho/m \pm 6 %
Head TSL temperature during test	(21.5 \pm 0.2) °C	----	----

SAR result with Head TSL

SAR averaged over 1 cm³ (1 g) of Head TSL	Condition	
SAR measured	250 mW input power	2.12 mW / g
SAR normalized	normalized to 1W	8.48 mW / g
SAR for nominal Head TSL parameters	normalized to 1W	8.29 mW /g \pm 17.0 % (k=2)

SAR averaged over 10 cm³ (10 g) of Head TSL	condition	
SAR measured	250 mW input power	1.38 mW / g
SAR normalized	normalized to 1W	5.52 mW / g
SAR for nominal Head TSL parameters	normalized to 1W	5.42 mW /g \pm 16.5 % (k=2)

Body TSL parameters

The following parameters and calculations were applied.

	Temperature	Permittivity	Conductivity
Nominal Body TSL parameters	22.0 °C	55.5	0.96 mho/m
Measured Body TSL parameters	(22.0 ± 0.2) °C	56.0 ± 6 %	0.96 mho/m ± 6 %
Body TSL temperature during test	(22.0 ± 0.2) °C	----	----

SAR result with Body TSL

SAR averaged over 1 cm³ (1 g) of Body TSL	Condition	
SAR measured	250 mW input power	2.20 mW / g
SAR normalized	normalized to 1W	8.80 mW / g
SAR for nominal Body TSL parameters	normalized to 1W	8.82 mW / g ± 17.0 % (k=2)

SAR averaged over 10 cm³ (10 g) of Body TSL	condition	
SAR measured	250 mW input power	1.46 mW / g
SAR normalized	normalized to 1W	5.84 mW / g
SAR for nominal Body TSL parameters	normalized to 1W	5.85 mW / g ± 16.5 % (k=2)

Appendix

Antenna Parameters with Head TSL

Impedance, transformed to feed point	53.5 Ω - 0.3 j Ω
Return Loss	- 29.3 dB

Antenna Parameters with Body TSL

Impedance, transformed to feed point	48.7 Ω - 2.3 j Ω
Return Loss	- 31.5 dB

General Antenna Parameters and Design

Electrical Delay (one direction)	1.041 ns
----------------------------------	----------

After long term use with 100W radiated power, only a slight warming of the dipole near the feedpoint can be measured.

The dipole is made of standard semirigid coaxial cable. The center conductor of the feeding line is directly connected to the second arm of the dipole. The antenna is therefore short-circuited for DC-signals.

No excessive force must be applied to the dipole arms, because they might bend or the soldered connections near the feedpoint may be damaged.

Additional EUT Data

Manufactured by	SPEAG
Manufactured on	March 22, 2010

See Page 9 for Calibration Extension Data.

DASY5 Validation Report for Head TSL

Date/Time: 02.11.2010 12:14:13

Test Laboratory: SPEAG, Zurich, Switzerland

DUT: Dipole 750 MHz; Type: D750V3; Serial: D750V3 - SN:1016

Communication System: CW; Frequency: 750 MHz; Duty Cycle: 1:1

Medium: HSL750

Medium parameters used: $f = 750 \text{ MHz}$; $\sigma = 0.91 \text{ mho/m}$; $\epsilon_r = 42.7$; $\rho = 1000 \text{ kg/m}^3$

Phantom section: Flat Section

Measurement Standard: DASY5 (IEEE/IEC/ANSI C63.19-2007)

DASY5 Configuration:

- Probe: ES3DV3 - SN3205; ConvF(6.37, 6.37, 6.37); Calibrated: 30.04.2010
- Sensor-Surface: 3mm (Mechanical Surface Detection)
- Electronics: DAE4 Sn601; Calibrated: 10.06.2010
- Phantom: Flat Phantom 4.9L; Type: QD000P49AA; Serial: 1001
- Measurement SW: DASY52, V52.2 Build 0, Version 52.2.0 (163)
- Postprocessing SW: SEMCAD X, V14.2 Build 2, Version 14.2.2 (1685)

Pin=250mW; dip=15mm; dist=3.0mm/Zoom Scan (7x7x7)/Cube 0: Measurement grid:

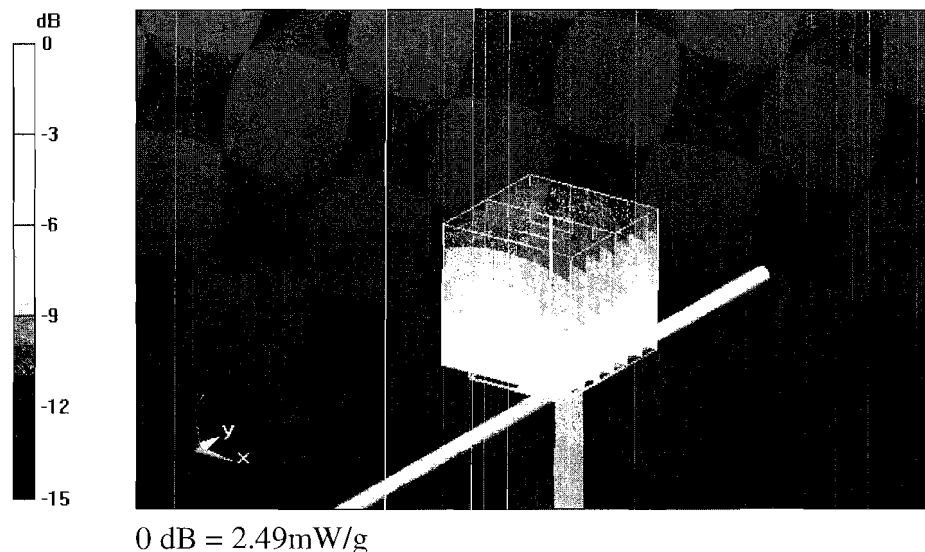
$dx=5\text{mm}$, $dy=5\text{mm}$, $dz=5\text{mm}$

Reference Value = 53.6 V/m; Power Drift = -0.00884 dB

Peak SAR (extrapolated) = 3.22 W/kg

SAR(1 g) = 2.12 mW/g; SAR(10 g) = 1.38 mW/g

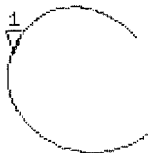
Maximum value of SAR (measured) = 2.49 mW/g



Impedance Measurement Plot for Head TSL

2 Nov 2010 14:07:16
[CH1] S11 1 U FS 1: 53.527 Ω -27.344 m Ω 7.7607 nF 750.000 000 MHz

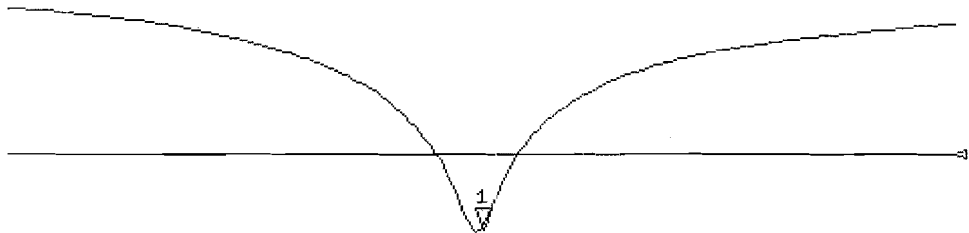
*
Del
Cor



Avg
16
↑

CH2 S11 LOG 5 dB/REF -20 dB 1:-29.345 dB 750.000 000 MHz

Cor
Avg
16
↑



START 550.000 000 MHz STOP 950.000 000 MHz

DASY5 Validation Report for Body TSL

Date/Time: 02.11.2010 14:24:58

Test Laboratory: SPEAG, Zurich, Switzerland

DUT: Dipole 750 MHz; Type: D750V3; Serial: D750V3 - SN:1016

Communication System: CW; Frequency: 750 MHz; Duty Cycle: 1:1

Medium: MSL750

Medium parameters used: $f = 750 \text{ MHz}$; $\sigma = 0.96 \text{ mho/m}$; $\epsilon_r = 56$; $\rho = 1000 \text{ kg/m}^3$

Phantom section: Flat Section

Measurement Standard: DASY5 (IEEE/IEC/ANSI C63.19-2007)

DASY5 Configuration:

- Probe: ES3DV3 - SN3205; ConvF(6.08, 6.08, 6.08); Calibrated: 30.04.2010
- Sensor-Surface: 3mm (Mechanical Surface Detection)
- Electronics: DAE4 Sn601; Calibrated: 10.06.2010
- Phantom: Flat Phantom 4.9L; Type: QD000P49AA; Serial: 1001
- Measurement SW: DASY52, V52.2 Build 0, Version 52.2.0 (163)
- Postprocessing SW: SEMCAD X, V14.2 Build 2, Version 14.2.2 (1685)

Pin=250mW; dip=15mm; dist=3.0mm/Zoom Scan (7x7x7)/Cube 0: Measurement grid:

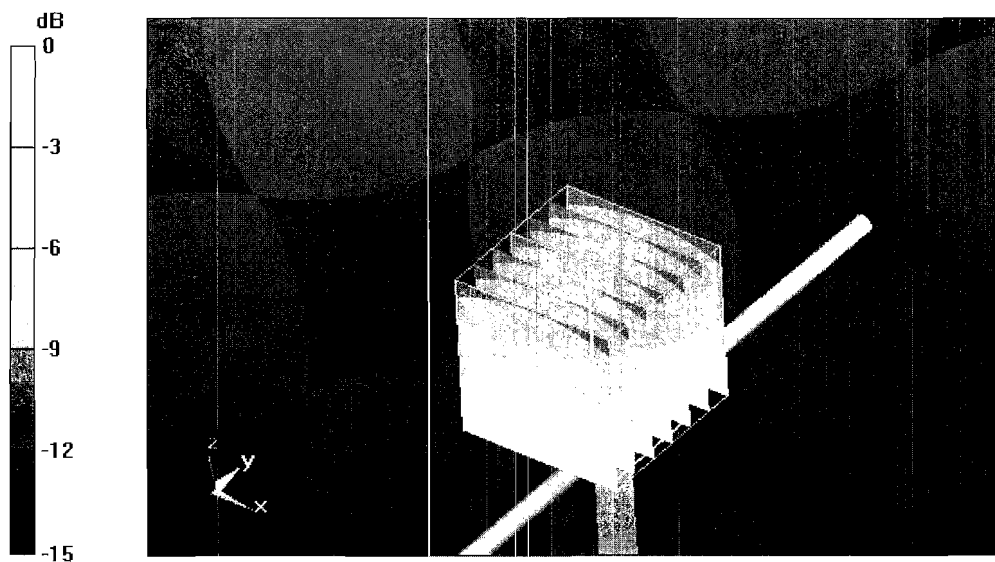
$dx=5\text{mm}$, $dy=5\text{mm}$, $dz=5\text{mm}$

Reference Value = 53.5 V/m; Power Drift = -0.00866 dB

Peak SAR (extrapolated) = 3.23 W/kg

SAR(1 g) = 2.2 mW/g; SAR(10 g) = 1.46 mW/g

Maximum value of SAR (measured) = 2.57 mW/g



0 dB = 2.57mW/g

Impedance Measurement Plot for Body TSL

2 Nov 2010 16:13:11
 CH1 S11 1 U FS 1: 48.713 Ω -2.2938 Ω 92.547 pF 750.000 000 MHz

*

Del

Cor

Avg
15

↑

CH2 S11 LOG 5 dB/REF -20 dB 1:-31.498 dB 750.000 000 MHz

Cor

Avg
15

↑

START 550.000 000 MHz

STOP 950.000 000 MHz

Extended Calibration

Usage of SAR dipoles calibrated less than 2 years ago but more than 1 year ago were confirmed in maintaining return loss (< -20 dB, within 20% of prior calibration) and impedance (within 5 ohm from prior calibration) requirements per extended calibrations in KDB Publication 450824:

D750V3 SN: 1016 - Head				
Date of Measurement	Return Loss (dB)	$\Delta\%$	Impedance (Ω)	$\Delta\Omega$
11/2/2010	-29.3		53.5	
6/13/2012	-28.9	-1.4	53.9	0.4

D750V3 SN: 1016 - Body				
Date of Measurement	Return Loss (dB)	$\Delta\%$	Impedance (Ω)	$\Delta\Omega$
11/2/2010	-31.5		48.7	
6/13/2012	-30.7	-2.5	48.2	-0.5



Accredited by the Swiss Accreditation Service (SAS)

Accreditation No.: **SCS 108**

The Swiss Accreditation Service is one of the signatories to the EA
 Multilateral Agreement for the recognition of calibration certificates

Client **RF Exposure Lab**

Certificate No: **D835V2-4d089_Nov10/2**

CALIBRATION CERTIFICATE (Replacement of No:D835V2-4d089_Nov10)

Object **D835V2 - SN: 4d089**

Calibration procedure(s) **QA CAL-05.v7**
Calibration procedure for dipole validation kits

Calibration date: **November 09, 2010**

This calibration certificate documents the traceability to national standards, which realize the physical units of measurements (SI).
 The measurements and the uncertainties with confidence probability are given on the following pages and are part of the certificate.

All calibrations have been conducted in the closed laboratory facility: environment temperature $(22 \pm 3)^{\circ}\text{C}$ and humidity $< 70\%$.

Calibration Equipment used (M&TE critical for calibration)

Primary Standards	ID #	Cal Date (Certificate No.)	Scheduled Calibration
Power meter EPM-442A	GB37480704	06-Oct-10 (No. 217-01266)	Oct-11
Power sensor HP 8481A	US37292783	06-Oct-10 (No. 217-01266)	Oct-11
Reference 20 dB Attenuator	SN: 5086 (20g)	30-Mar-10 (No. 217-01158)	Mar-11
Type-N mismatch combination	SN: 5047.2 / 06327	30-Mar-10 (No. 217-01162)	Mar-11
Reference Probe ES3DV3	SN: 3205	30-Apr-10 (No. ES3-3205_Apr10)	Apr-11
DAE4	SN: 601	10-Jun-10 (No. DAE4-601_Jun10)	Jun-11
Secondary Standards	ID #	Check Date (in house)	Scheduled Check
Power sensor HP 8481A	MY41092317	18-Oct-02 (in house check Oct-09)	In house check: Oct-11
RF generator R&S SMT-06	100005	4-Aug-99 (in house check Oct-09)	In house check: Oct-11
Network Analyzer HP 8753E	US37390585 S4206	18-Oct-01 (in house check Oct-10)	In house check: Oct-11

Calibrated by: **Dimce Iliev** Name: **Dimce Iliev** Function: **Laboratory Technician**

Approved by: **Katja Pokovic** Name: **Katja Pokovic** Function: **Technical Manager**

Signature

Issued: June 12, 2012

This calibration certificate shall not be reproduced except in full without written approval of the laboratory.



Accredited by the Swiss Accreditation Service (SAS)

The Swiss Accreditation Service is one of the signatories to the EA
Multilateral Agreement for the recognition of calibration certificates

Accreditation No.: **SCS 108**

Glossary:

TSL	tissue simulating liquid
ConvF	sensitivity in TSL / NORM x,y,z
N/A	not applicable or not measured

Calibration is Performed According to the Following Standards:

- a) IEEE Std 1528-2003, "IEEE Recommended Practice for Determining the Peak Spatial-Averaged Specific Absorption Rate (SAR) in the Human Head from Wireless Communications Devices: Measurement Techniques", December 2003
- b) IEC 62209-1, "Procedure to measure the Specific Absorption Rate (SAR) for hand-held devices used in close proximity to the ear (frequency range of 300 MHz to 3 GHz)", February 2005
- c) Federal Communications Commission Office of Engineering & Technology (FCC OET), "Evaluating Compliance with FCC Guidelines for Human Exposure to Radiofrequency Electromagnetic Fields; Additional Information for Evaluating Compliance of Mobile and Portable Devices with FCC Limits for Human Exposure to Radiofrequency Emissions", Supplement C (Edition 01-01) to Bulletin 65

Additional Documentation:

- d) DASY4/5 System Handbook

Methods Applied and Interpretation of Parameters:

- *Measurement Conditions:* Further details are available from the Validation Report at the end of the certificate. All figures stated in the certificate are valid at the frequency indicated.
- *Antenna Parameters with TSL:* The dipole is mounted with the spacer to position its feed point exactly below the center marking of the flat phantom section, with the arms oriented parallel to the body axis.
- *Feed Point Impedance and Return Loss:* These parameters are measured with the dipole positioned under the liquid filled phantom. The impedance stated is transformed from the measurement at the SMA connector to the feed point. The Return Loss ensures low reflected power. No uncertainty required.
- *Electrical Delay:* One-way delay between the SMA connector and the antenna feed point. No uncertainty required.
- *SAR measured:* SAR measured at the stated antenna input power.
- *SAR normalized:* SAR as measured, normalized to an input power of 1 W at the antenna connector.
- *SAR for nominal TSL parameters:* The measured TSL parameters are used to calculate the nominal SAR result.

Measurement Conditions

DASY system configuration, as far as not given on page 1.

DASY Version	DASY5	V52.2
Extrapolation	Advanced Extrapolation	
Phantom	Modular Flat Phantom V4.9	
Distance Dipole Center - TSL	15 mm	with Spacer
Zoom Scan Resolution	dx, dy, dz = 5 mm	
Frequency	835 MHz \pm 1 MHz	

Head TSL parameters

The following parameters and calculations were applied.

	Temperature	Permittivity	Conductivity
Nominal Head TSL parameters	22.0 °C	41.5	0.90 mho/m
Measured Head TSL parameters	(22.0 \pm 0.2) °C	41.5 \pm 6 %	0.89 mho/m \pm 6 %
Head TSL temperature during test	(21.8 \pm 0.2) °C	----	----

SAR result with Head TSL

SAR averaged over 1 cm ³ (1 g) of Head TSL	Condition	
SAR measured	250 mW input power	2.37 mW / g
SAR normalized	normalized to 1W	9.48 mW / g
SAR for nominal Head TSL parameters	normalized to 1W	9.56 mW / g \pm 17.0 % (k=2)

SAR averaged over 10 cm ³ (10 g) of Head TSL	condition	
SAR measured	250 mW input power	1.55 mW / g
SAR normalized	normalized to 1W	6.20 mW / g
SAR for nominal Head TSL parameters	normalized to 1W	6.24 mW / g \pm 16.5 % (k=2)

Body TSL parameters

The following parameters and calculations were applied.

	Temperature	Permittivity	Conductivity
Nominal Body TSL parameters	22.0 °C	55.2	0.97 mho/m
Measured Body TSL parameters	(22.0 ± 0.2) °C	54.2 ± 6 %	0.99 mho/m ± 6 %
Body TSL temperature during test	(22.0 ± 0.2) °C	----	----

SAR result with Body TSL

SAR averaged over 1 cm³ (1 g) of Body TSL	Condition	
SAR measured	250 mW input power	2.52 mW / g
SAR normalized	normalized to 1W	10.1 mW / g
SAR for nominal Body TSL parameters	normalized to 1W	9.89 mW / g ± 17.0 % (k=2)

SAR averaged over 10 cm³ (10 g) of Body TSL	condition	
SAR measured	250 mW input power	1.65 mW / g
SAR normalized	normalized to 1W	6.60 mW / g
SAR for nominal Body TSL parameters	normalized to 1W	6.51 mW / g ± 16.5 % (k=2)

Appendix

Antenna Parameters with Head TSL

Impedance, transformed to feed point	51.3 Ω - 4.4 j Ω
Return Loss	- 26.9 dB

Antenna Parameters with Body TSL

Impedance, transformed to feed point	47.5 Ω - 5.9 j Ω
Return Loss	- 23.6 dB

General Antenna Parameters and Design

Electrical Delay (one direction)	1.391 ns
----------------------------------	----------

After long term use with 100W radiated power, only a slight warming of the dipole near the feedpoint can be measured.

The dipole is made of standard semirigid coaxial cable. The center conductor of the feeding line is directly connected to the second arm of the dipole. The antenna is therefore short-circuited for DC-signals.

No excessive force must be applied to the dipole arms, because they might bend or the soldered connections near the feedpoint may be damaged.

Additional EUT Data

Manufactured by	SPEAG
Manufactured on	October 17, 2008

See Page 9 for Calibration Extension Data.

DASY5 Validation Report for Head TSL

Date/Time: 08.11.2010 10:51:31

Test Laboratory: SPEAG, Zurich, Switzerland

DUT: Dipole 835 MHz; Type: D835V2; Serial: D835V2 - SN:4d089

Communication System: CW; Frequency: 835 MHz; Duty Cycle: 1:1

Medium: HSL900

Medium parameters used: $f = 835 \text{ MHz}$; $\sigma = 0.89 \text{ mho/m}$; $\epsilon_r = 41.4$; $\rho = 1000 \text{ kg/m}^3$

Phantom section: Flat Section

Measurement Standard: DASY5 (IEEE/IEC/ANSI C63.19-2007)

DASY5 Configuration:

- Probe: ES3DV3 - SN3205; ConvF(6.03, 6.03, 6.03); Calibrated: 30.04.2010
- Sensor-Surface: 3mm (Mechanical Surface Detection)
- Electronics: DAE4 Sn601; Calibrated: 10.06.2010
- Phantom: Flat Phantom 4.9L; Type: QD000P49AA; Serial: 1001
- Measurement SW: DASY52, V52.2 Build 0, Version 52.2.0 (163)
- Postprocessing SW: SEMCAD X, V14.2 Build 2, Version 14.2.2 (1685)

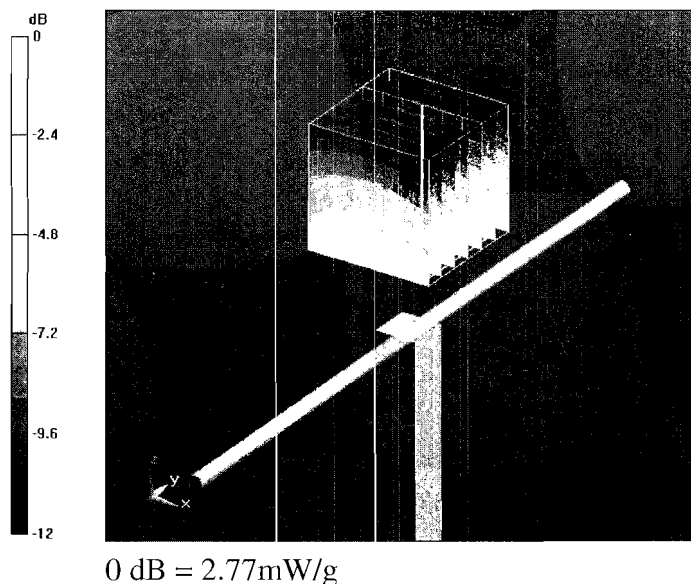
Pin=250 mW /d=15mm, dist=3.0mm (ES-Probe)/Zoom Scan (7x7x7) /Cube 0: Measurement grid: dx=5mm, dy=5mm, dz=5mm

Reference Value = 57.3 V/m; Power Drift = 0.026 dB

Peak SAR (extrapolated) = 3.56 W/kg

SAR(1 g) = 2.37 mW/g; SAR(10 g) = 1.55 mW/g

Maximum value of SAR (measured) = 2.77 mW/g



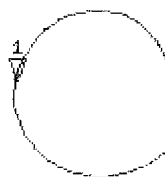
Impedance Measurement Plot for Head TSL

8 Nov 2010 14:48:26
 CH1 S11 1 U FS 1: 51.346 Ω -4.3613 Ω 43.703 pF 835.000 000 MHz

*

De1

Cor

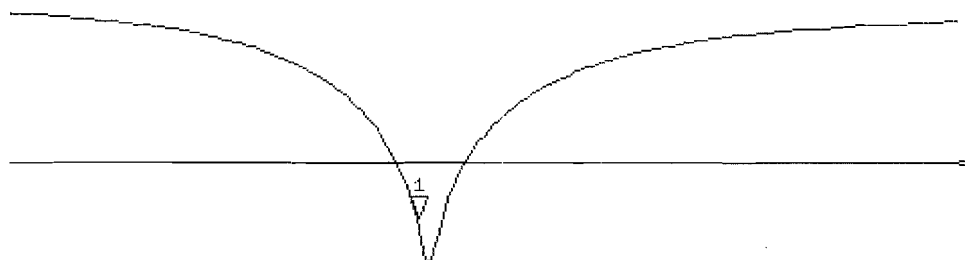


Avg
16

↑

CH2 S11 LOG 5 dB/REF -20 dB 1:-26.941 dB 835.000 000 MHz

Cor



Avg
16

↑

START 835.000 000 MHz

STOP 1 100.000 000 MHz

DASY5 Validation Report for Body

Date/Time: 09.11.2010 10:47:16

Test Laboratory: SPEAG, Zurich, Switzerland

DUT: Dipole 835 MHz; Type: D835V2; Serial: D835V2 - SN:4d089

Communication System: CW; Frequency: 835 MHz; Duty Cycle: 1:1

Medium: MSL900

Medium parameters used: $f = 835 \text{ MHz}$; $\sigma = 0.99 \text{ mho/m}$; $\epsilon_r = 54.2$; $\rho = 1000 \text{ kg/m}^3$

Phantom section: Flat Section

Measurement Standard: DASY5 (IEEE/IEC/ANSI C63.19-2007)

DASY5 Configuration:

- Probe: ES3DV3 - SN3205; ConvF(5.86, 5.86, 5.86); Calibrated: 30.04.2010
- Sensor-Surface: 3mm (Mechanical Surface Detection)
- Electronics: DAE4 Sn601; Calibrated: 10.06.2010
- Phantom: Flat Phantom 4.9L; Type: QD000P49AA; Serial: 1001
- Measurement SW: DASY52, V52.2 Build 0, Version 52.2.0 (163)
- Postprocessing SW: SEMCAD X, V14.2 Build 2, Version 14.2.2 (1685)

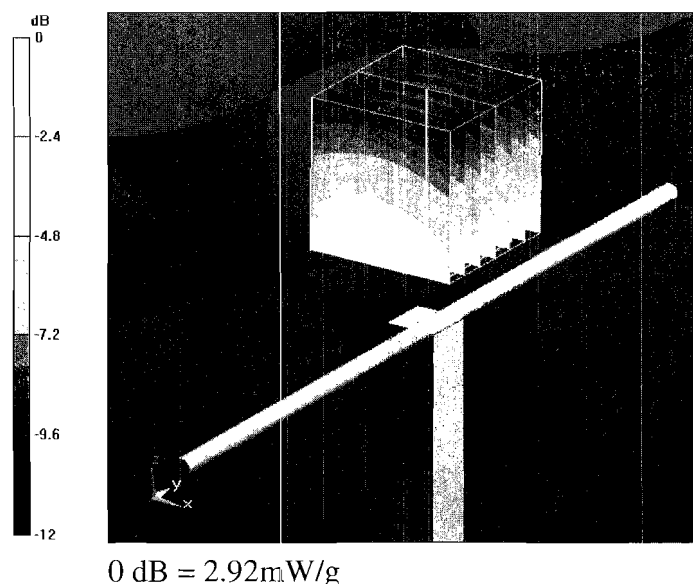
Pin=250 mW /d=15mm, dist=3.0mm (ES-Probe)/Zoom Scan (7x7x7) /Cube 0: Measurement grid: dx=5mm, dy=5mm, dz=5mm

Reference Value = 56 V/m; Power Drift = 0.024 dB

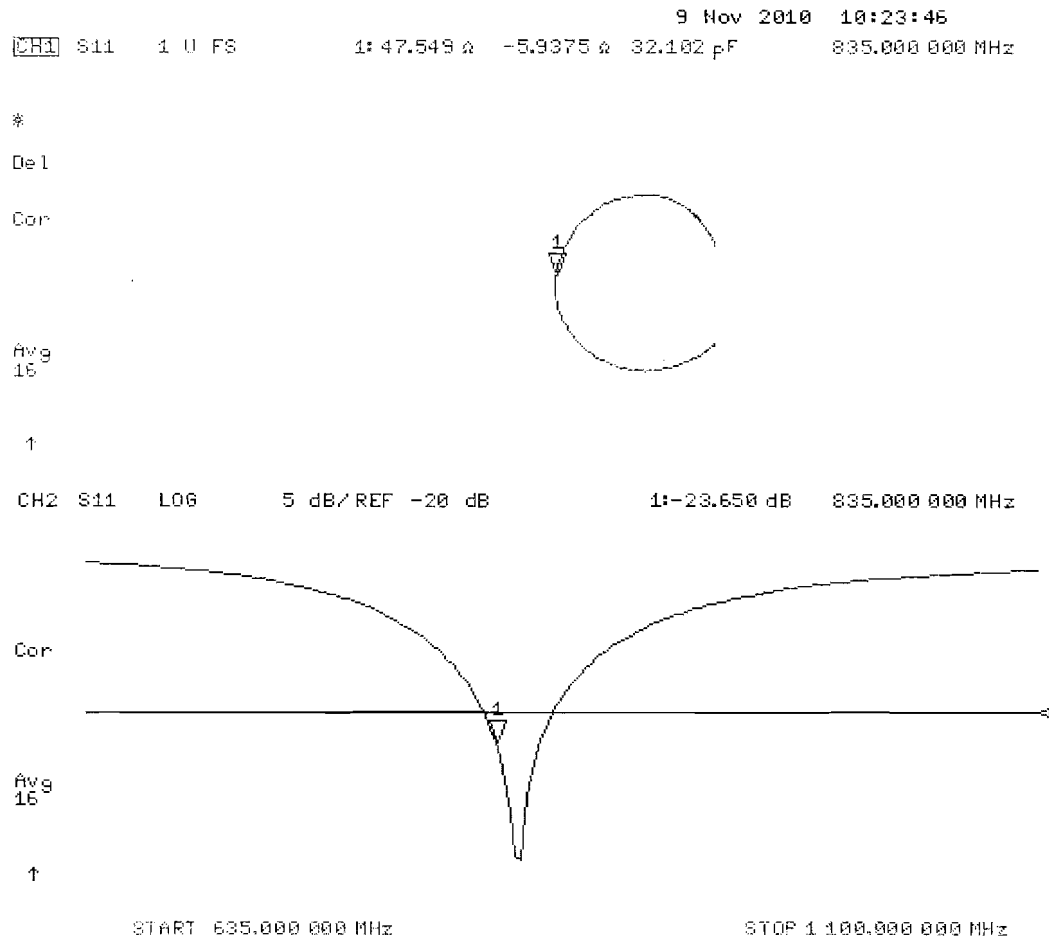
Peak SAR (extrapolated) = 3.72 W/kg

SAR(1 g) = 2.52 mW/g; SAR(10 g) = 1.65 mW/g

Maximum value of SAR (measured) = 2.92 mW/g



Impedance Measurement Plot for Body TSL



Extended Calibration

Usage of SAR dipoles calibrated less than 2 years ago but more than 1 year ago were confirmed in maintaining return loss (< -20 dB, within 20% of prior calibration) and impedance (within 5 ohm from prior calibration) requirements per extended calibrations in KDB Publication 450824:

D835V2 SN: 4d089 - Head				
Date of Measurement	Return Loss (dB)	$\Delta\%$	Impedance (Ω)	$\Delta\Omega$
11/9/2010	-26.9		51.3	
6/13/2012	-27.9	3.7	52.4	1.1

D835V2 SN: 4d089 - Body				
Date of Measurement	Return Loss (dB)	$\Delta\%$	Impedance (Ω)	$\Delta\Omega$
11/9/2010	-23.6		47.5	
6/13/2012	-24.6	4.2	49.1	1.6

Appendix F – Phantom Calibration Data Sheets

Certificate of Conformity / First Article Inspection

Item	Oval Flat Phantom ELI 4.0
Type No	QD OVA 001 B
Series No	1003 and higher
Manufacturer	Untersee Composites Knebelstrasse 8 CH-8268 Mannenbach, Switzerland

Tests

Complete tests were made on the prototype units QD OVA 001 AA 1001, QD OVA 001 AB 1002, pre-series units QD OVA 001 BA 1003-1005 as well as on the series units QD OVA 001 BB, 1006 ff.

Test	Requirement	Details	Units tested
Material thickness	Compliant with the standard requirements	Bottom plate: 2.0mm +/- 0.2mm	all
Material parameters	Dielectric parameters for required frequencies	< 6 GHz: Rel. permittivity = 4 +/-1, Loss tangent ≤ 0.05	Material sample
Material resistivity	The material has been tested to be compatible with the liquids defined in the standards if handled and cleaned according to the instructions.	DGBE based simulating liquids. Observe Technical Note for material compatibility.	Equivalent phantoms, Material sample
Shape	Thickness of bottom material, Internal dimensions, Sagging compatible with standards from minimum frequency	Bottom elliptical 600 x 400 mm Depth 190 mm, Shape is within tolerance for filling height up to 155 mm, Eventual sagging is reduced or eliminated by support via DUT	Prototypes, Sample testing

Standards

- [1] CENELEC EN 50361-2001, « Basic standard for the measurement of the Specific Absorption Rate related to human exposure to electromagnetic fields from mobile phones (300 MHz – 3 GHz) », July 2001
- [2] IEEE 1528-2003, "Recommended Practice for Determining the Peak Spatial-Average Specific Absorption Rate (SAR) in the Human Head from Wireless Communications Devices: Measurement Techniques, December 2003
- [3] IEC 62209 – 1, "Specific Absorption Rate (SAR) in the frequency range of 300 MHz to 3 GHz – Measurement Procedure, Part 1: Hand-held mobile wireless communication devices", February 2005
- [4] IEC 62209 – 2, Draft, "Human Exposure to Radio Frequency Fields from Handheld and Body-Mounted Wireless Communication Devices – Human models, Instrumentation and Procedures – Part 2: Procedure to determine the Specific Absorption Rate (SAR) in the head and body for 30 MHz to 6 GHz Handheld and Body-Mounted Devices used in close proximity to the Body.", February 2005
- [5] OET Bulletin 65, Supplement C, "Evaluating Compliance with FCC Guidelines for Human Exposure to Radiofrequency Electromagnetic Fields", Edition January 2001

Based on the tests above, we certify that this item is in compliance with the standards [1] to [5] if operated according to the specific requirements and considering the thickness. The dimensions are fully compliant with [4] from 30 MHz to 6 GHz. For the other standards, the minimum lower frequency limit is limited due to the dimensional requirements ([1]: 450 MHz, [2]: 300 MHz, [3]: 800 MHz, [5]: 375 MHz) and possibly further by the dimensions of the DUT.

s p e a g

Date 28.4.2008

Signature / Stamp

Schmid & Partner Engineering AG
 Zeughausstrasse 43, 8004 Zurich, Switzerland
 Phone +41 44 245 9700, Fax +41 44 245 9779
 info@speag.com, http://www.speag.com