

RF Assembly Photos



RF Assembly Bottom View



RF Assembly Front View



RF Assembly Left Side View



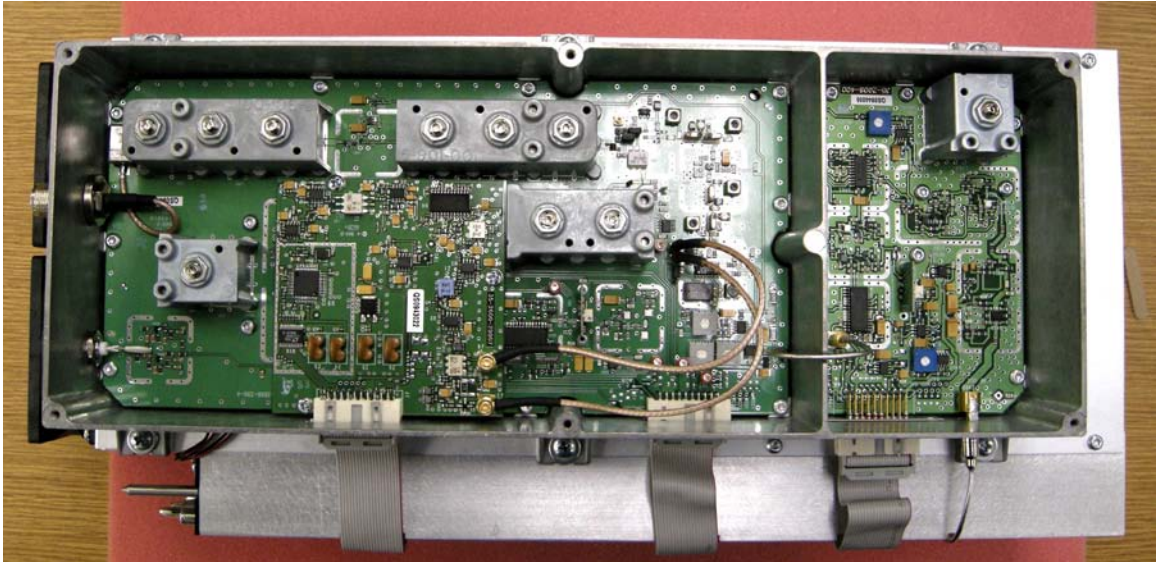
RF Assembly Top View



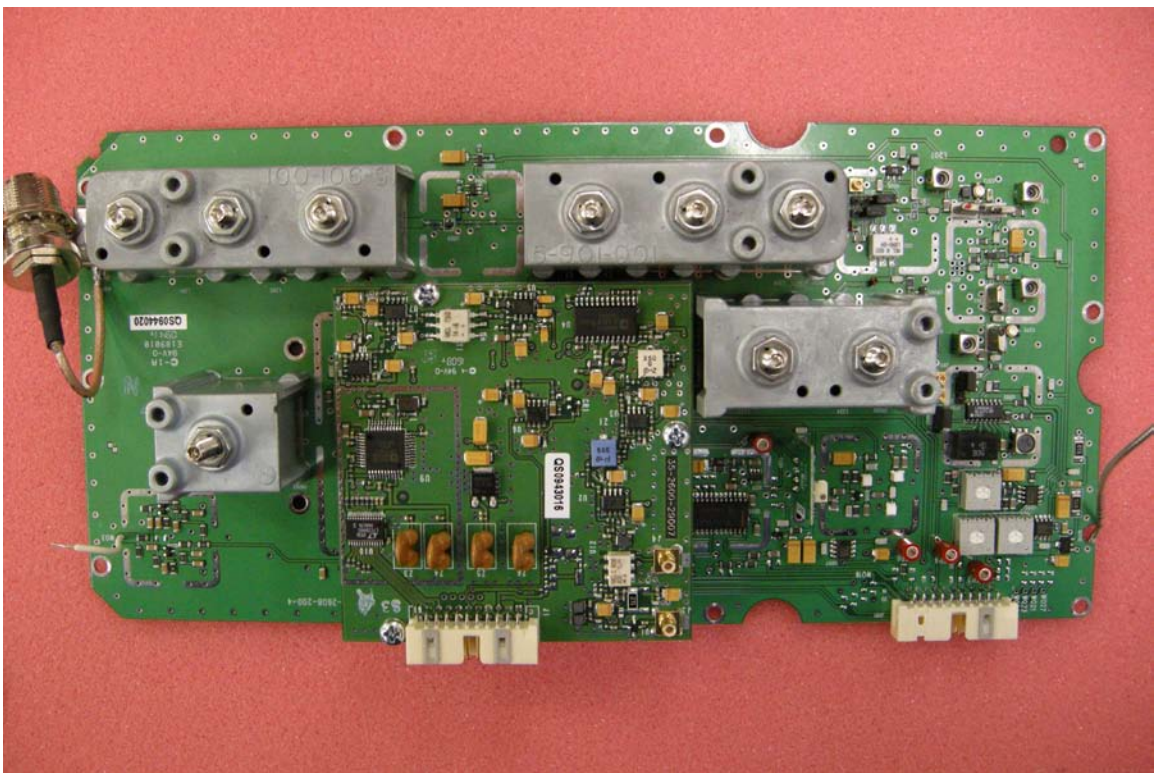
RF Assembly Right Side View



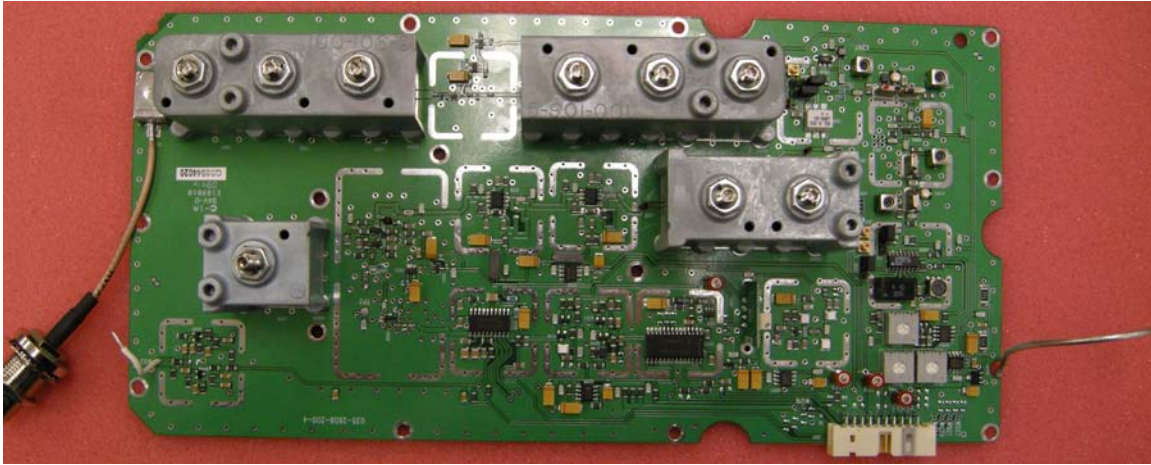
RF Assembly Back View



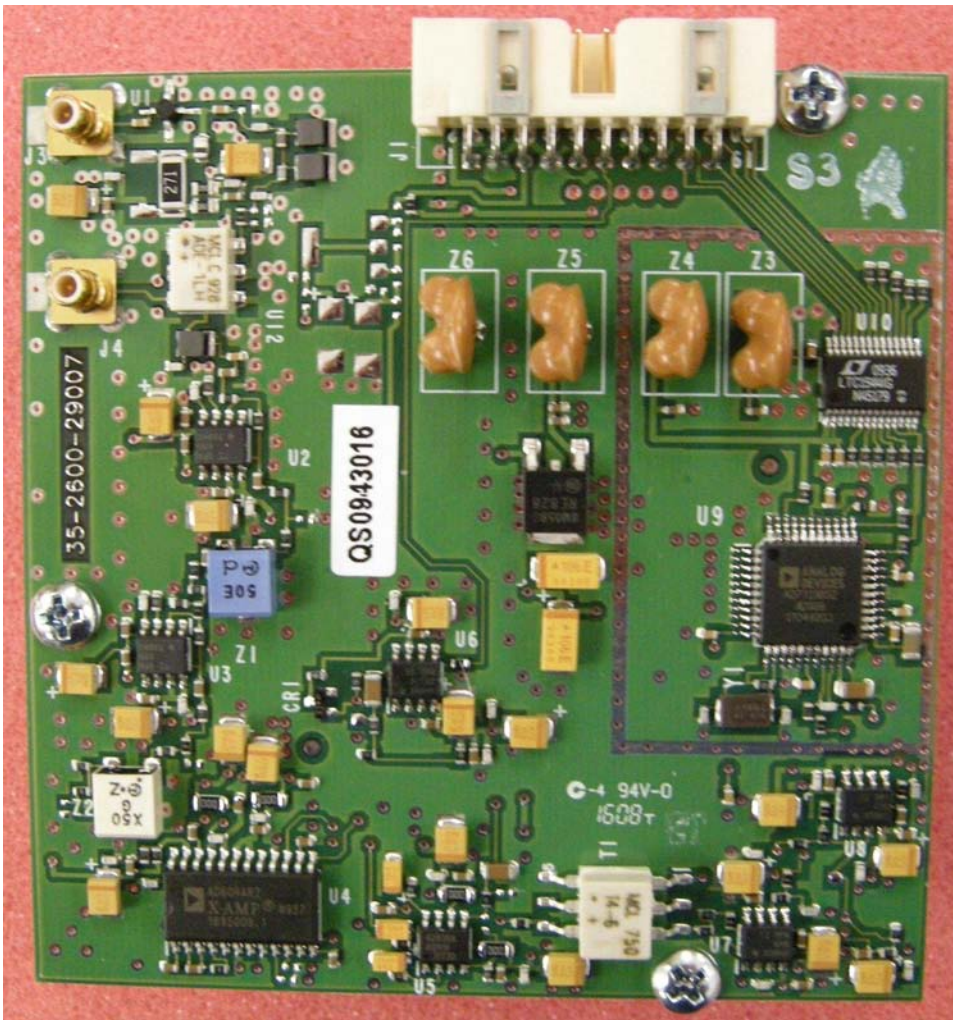
RF Assembly Receiver Exciter with Cover Removed



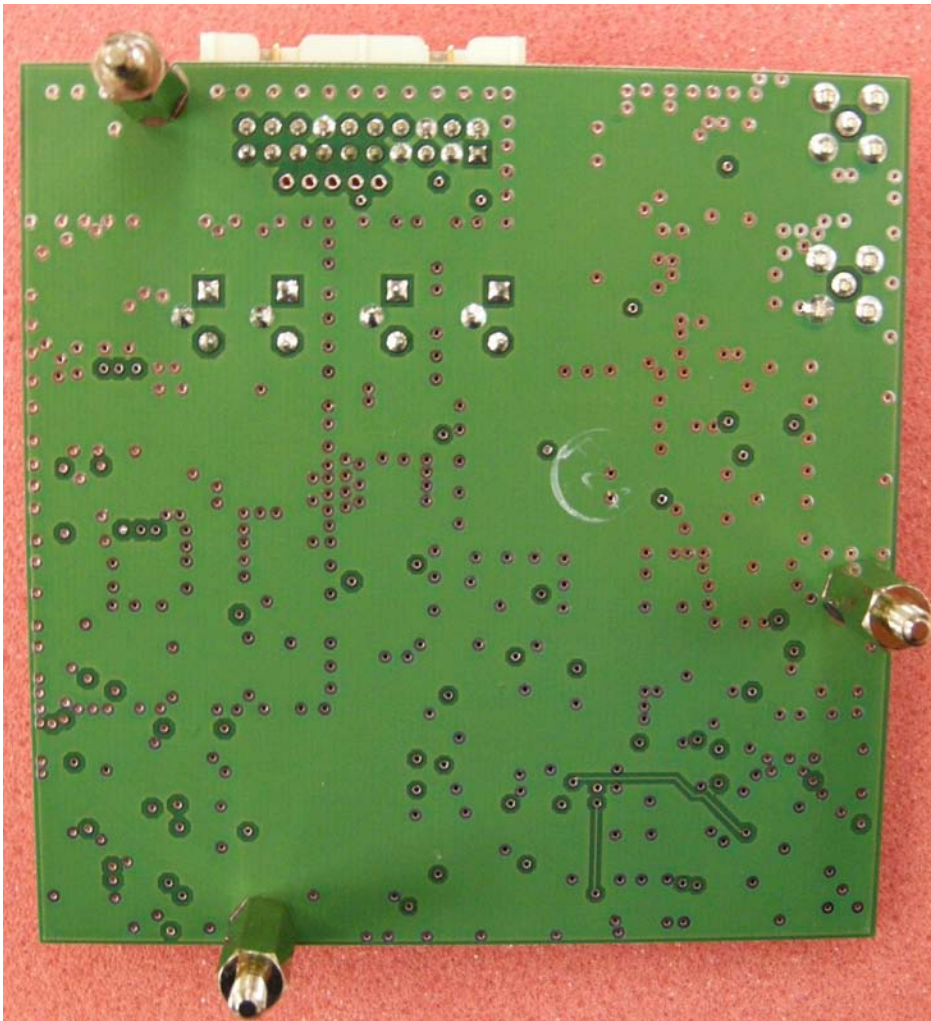
Receiver PC Board Top with Digital IF Board



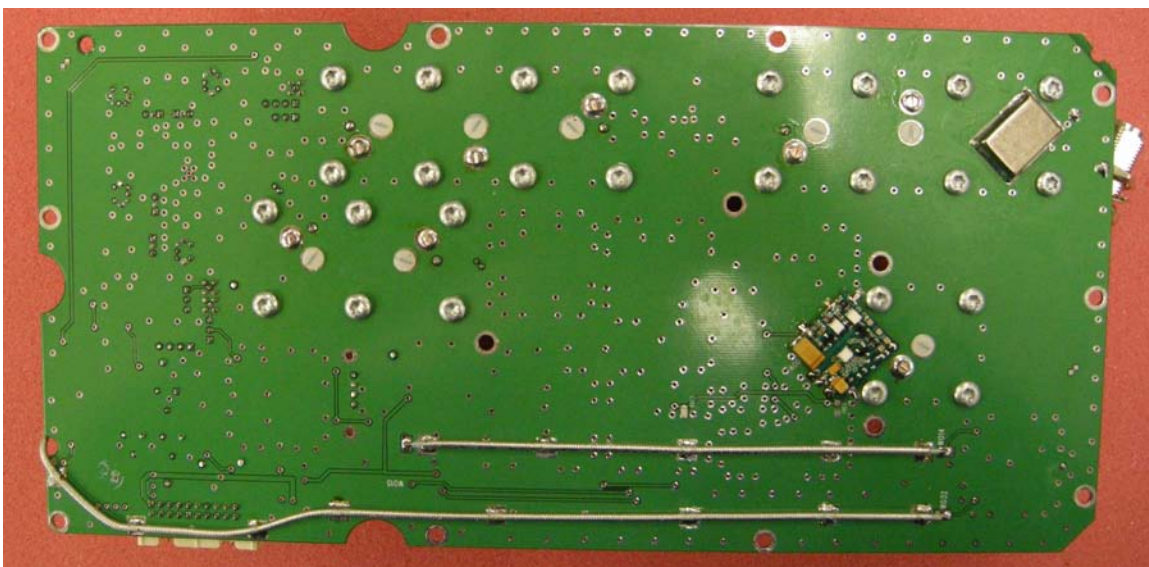
Receiver PC Board Top with Digital IF Removed



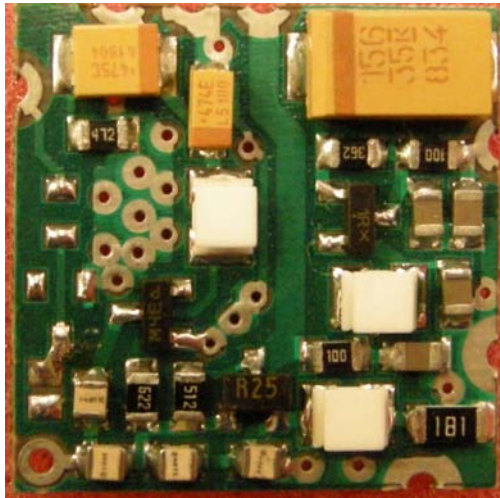
Digital IF Board Top



Digital IF Board Bottom



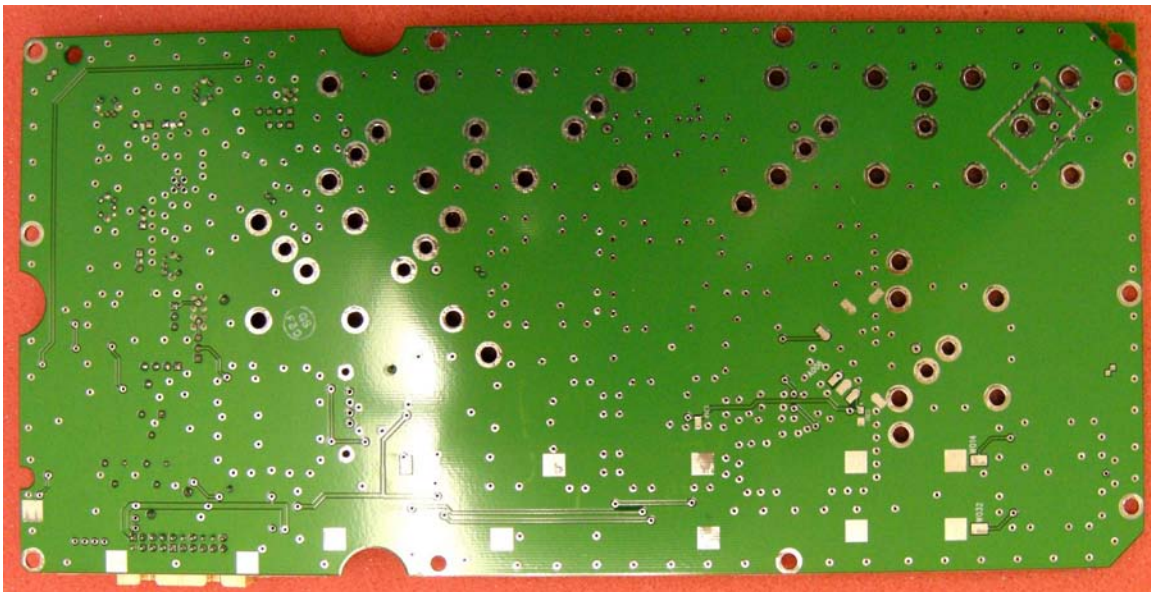
Receiver PC Board with VCO



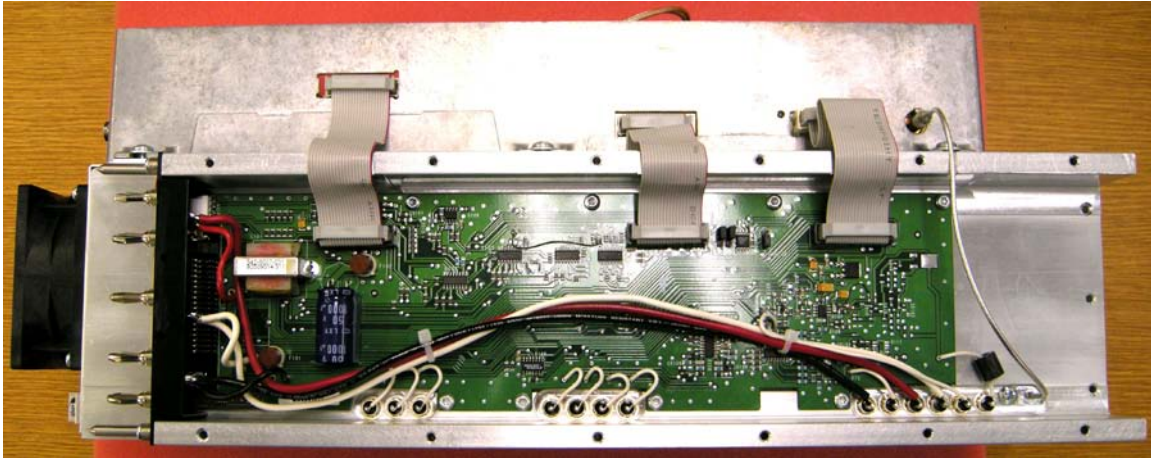
Receiver VCO Board Top



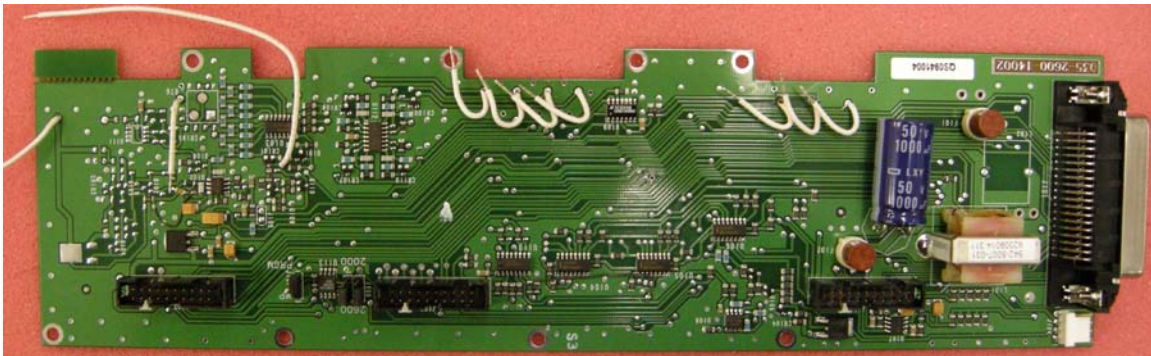
Receiver VCO Board Bottom



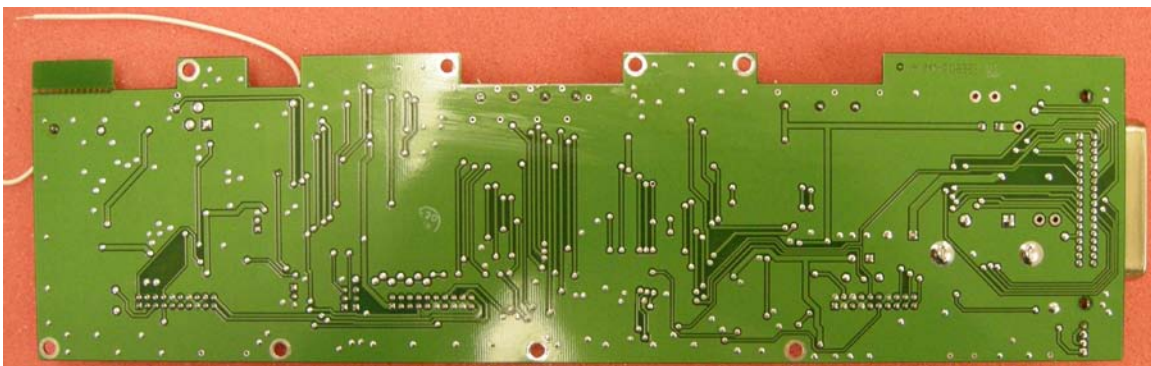
Receiver PC Board with VCO Removed



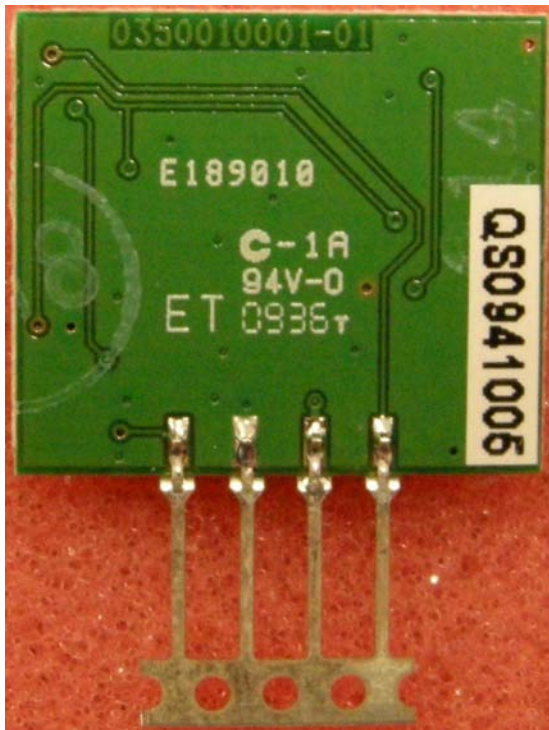
RF Interface Board (RFIB) in Chassis



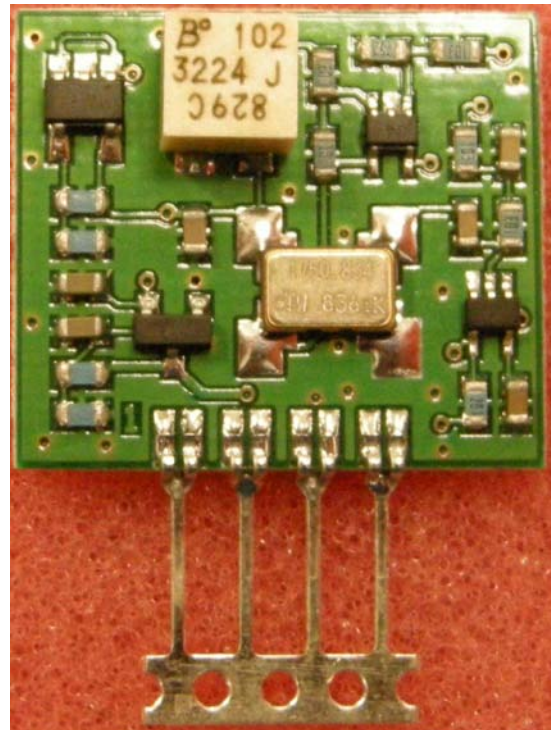
RFIB Board Top



RFIB Board Bottom



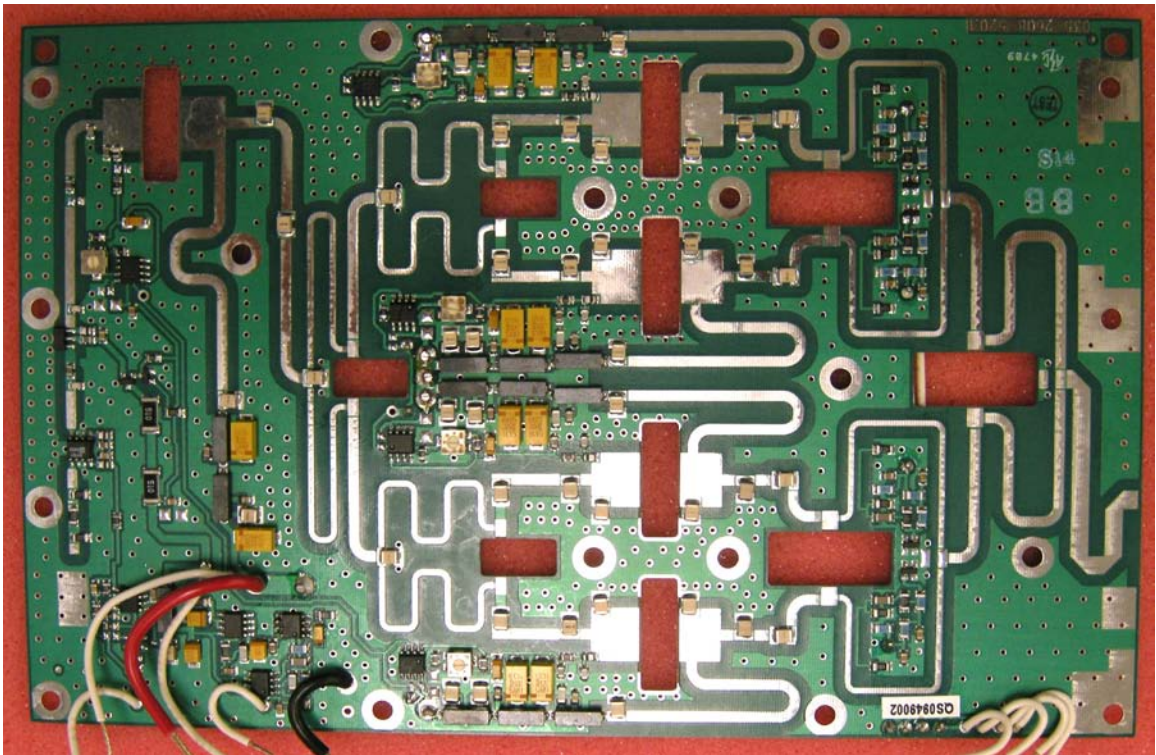
TCXO Bottom



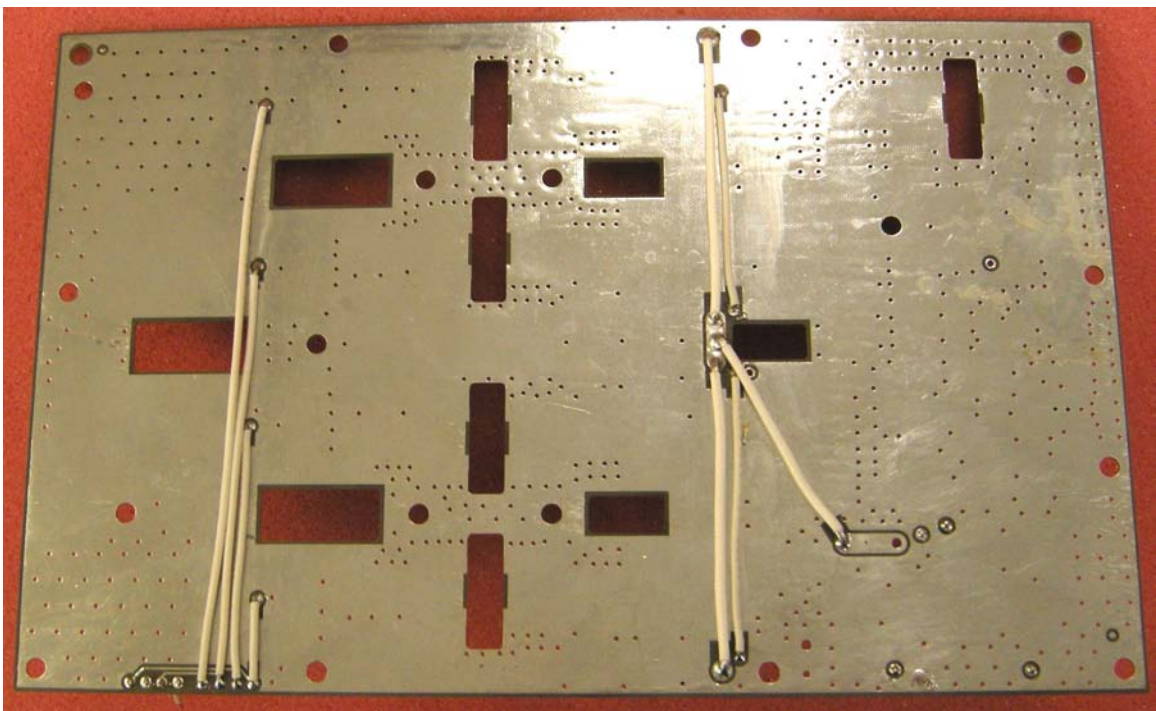
TCXO Top



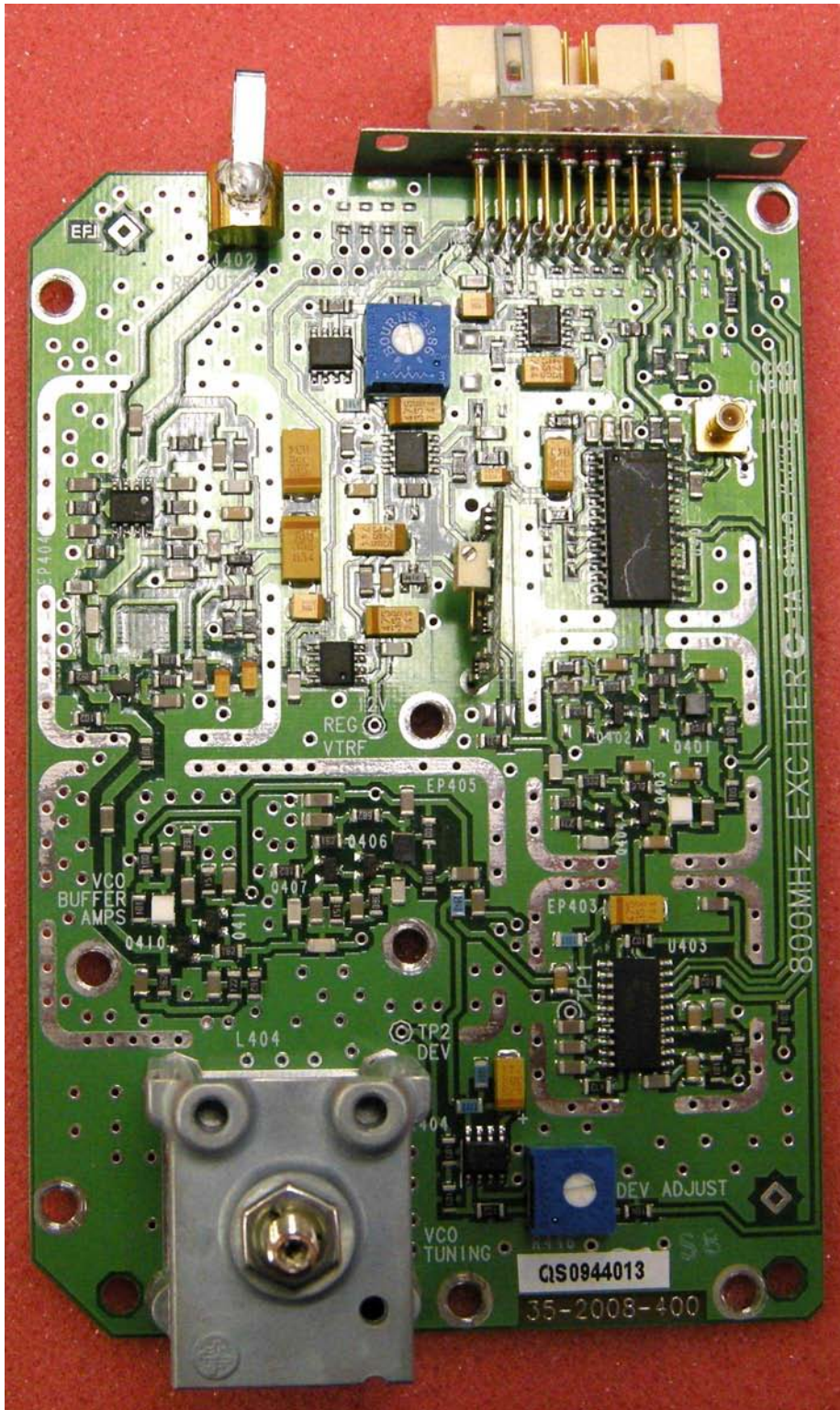
PA Board, Low Pass Filter, and RF Detector in Chassis



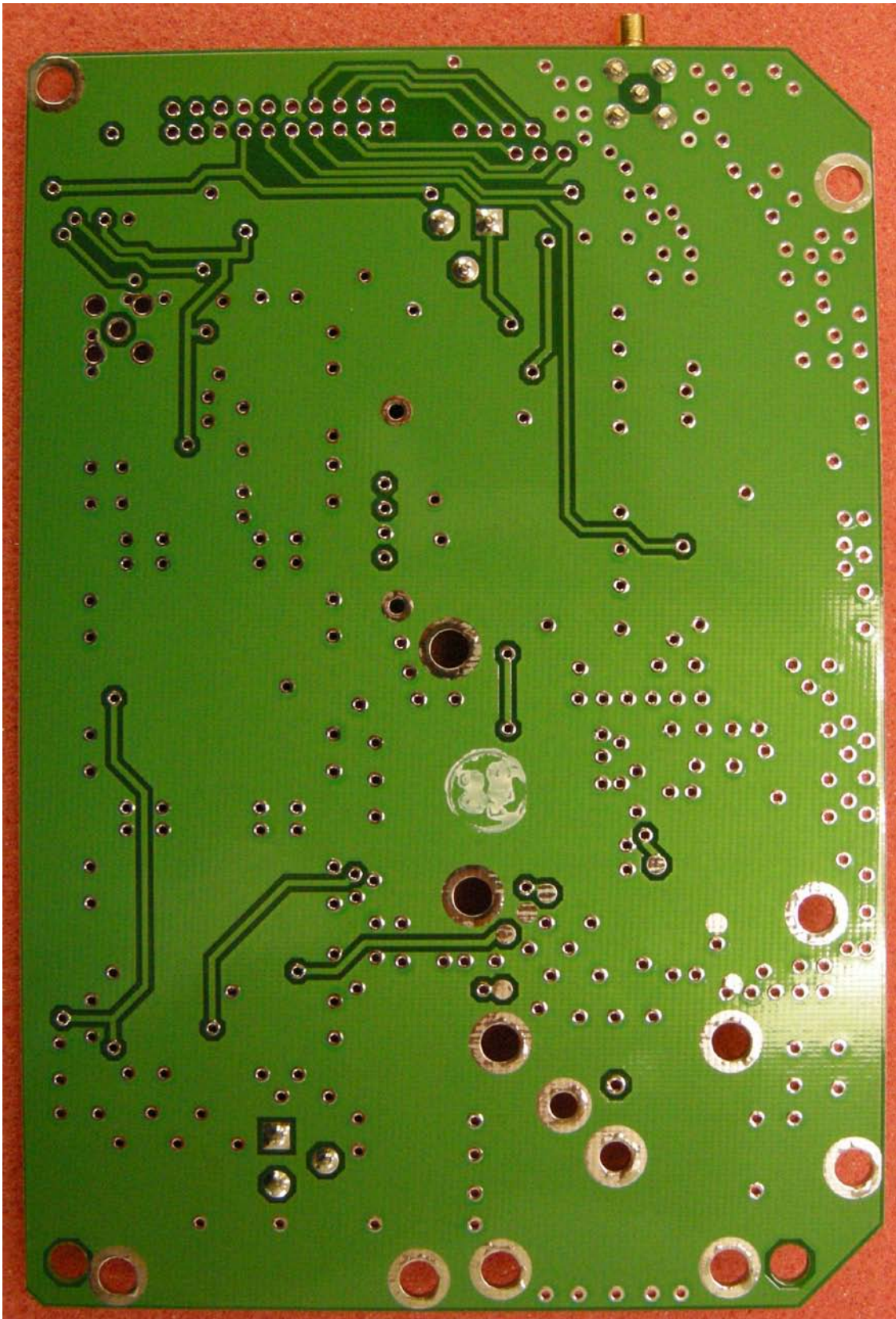
PA Board Top



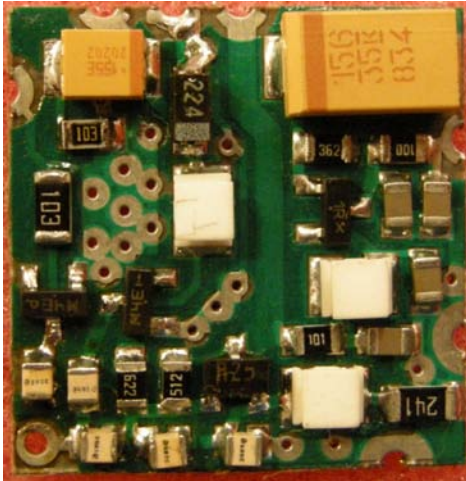
PA Board Bottom



Exciter PC Board Top



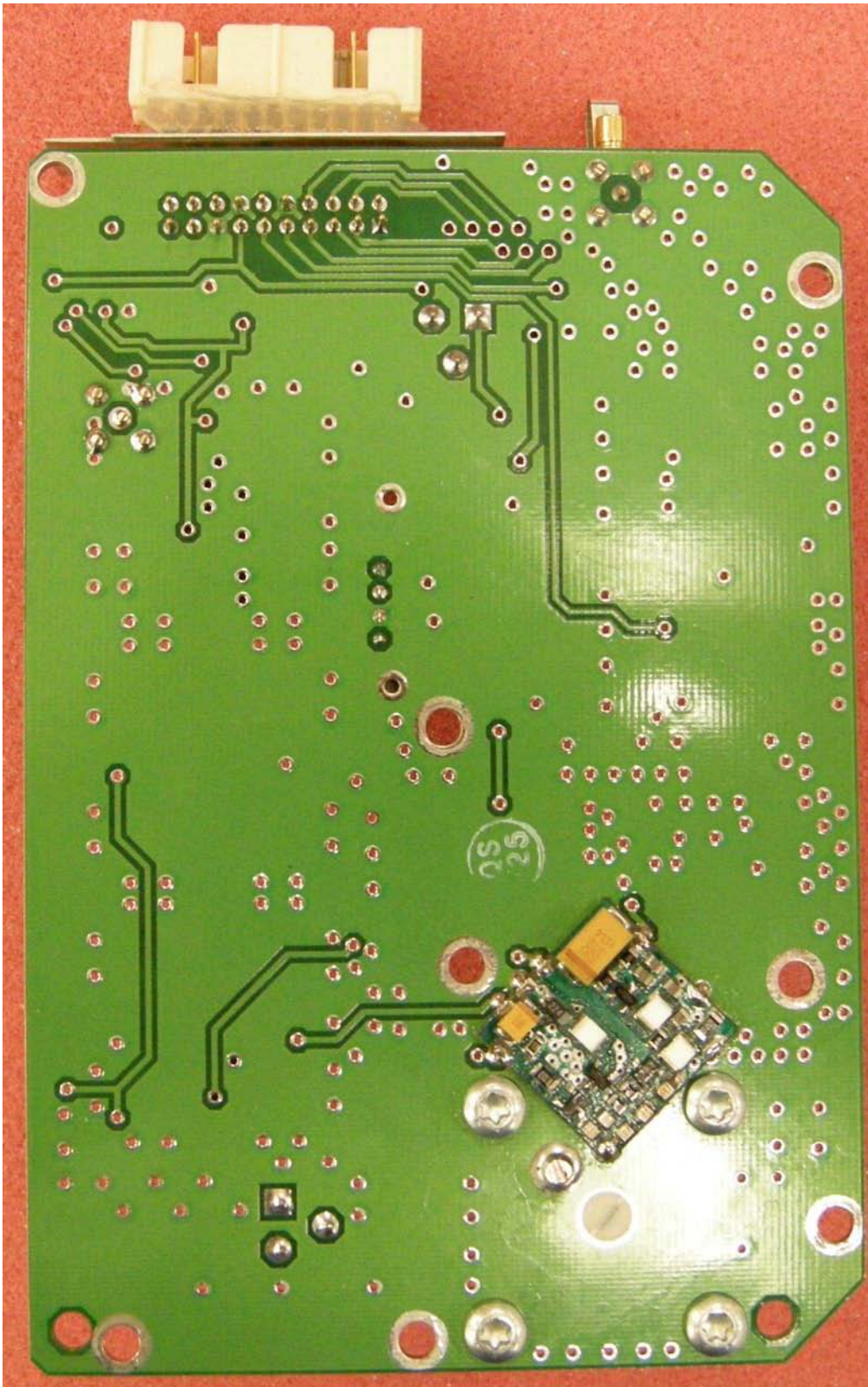
Exciter PC Board Bottom Without VCO



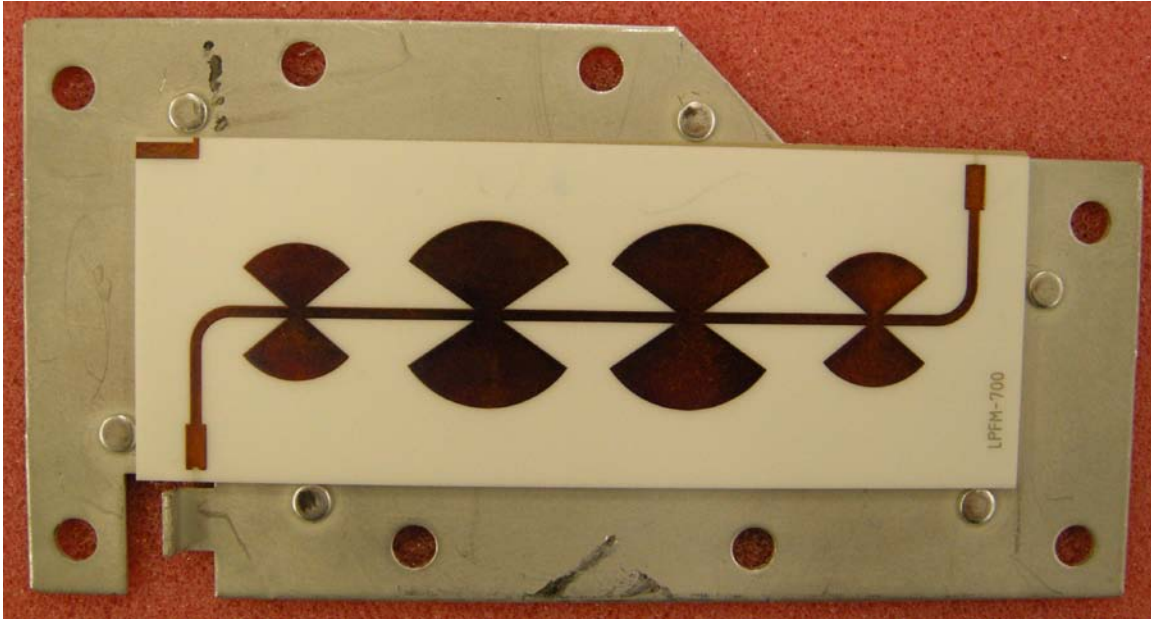
Transmitter VCO Top



Transmitter VCO Bottom



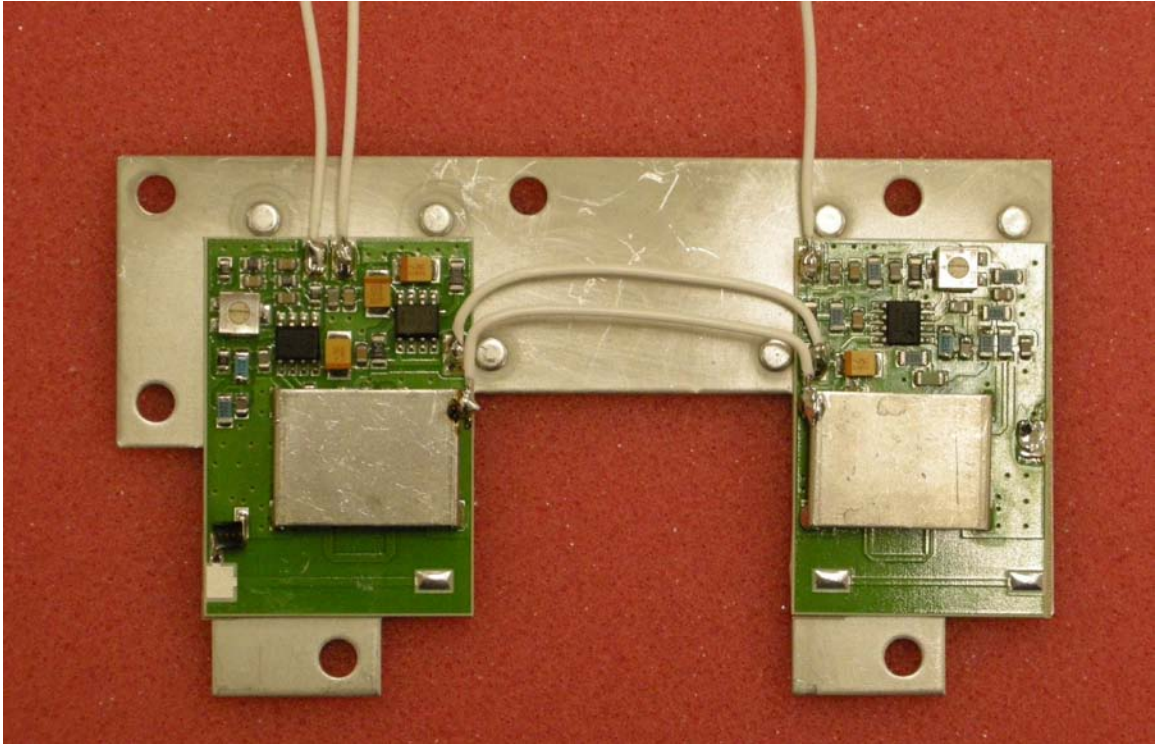
Exciter Board Bottom with VCO



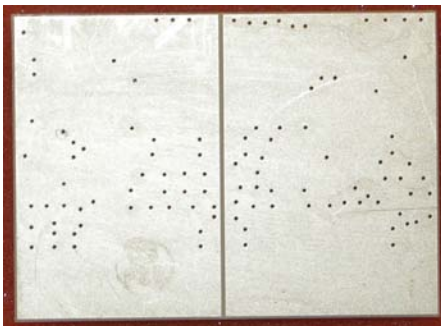
Ceramic Low Pass Filter Top on Metal Carrier



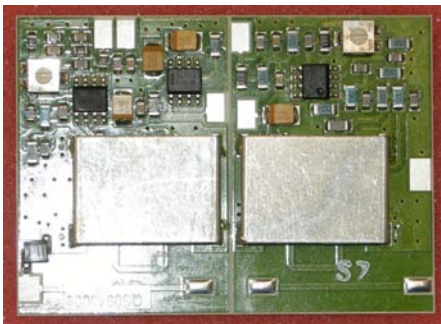
Ceramic Low Pass Filter Bottom



Power Detector Boards in Carrier



Power Detector Boards Bottom



Power Detector Boards Top