

# **Raytheon**

Raytheon Marine Company

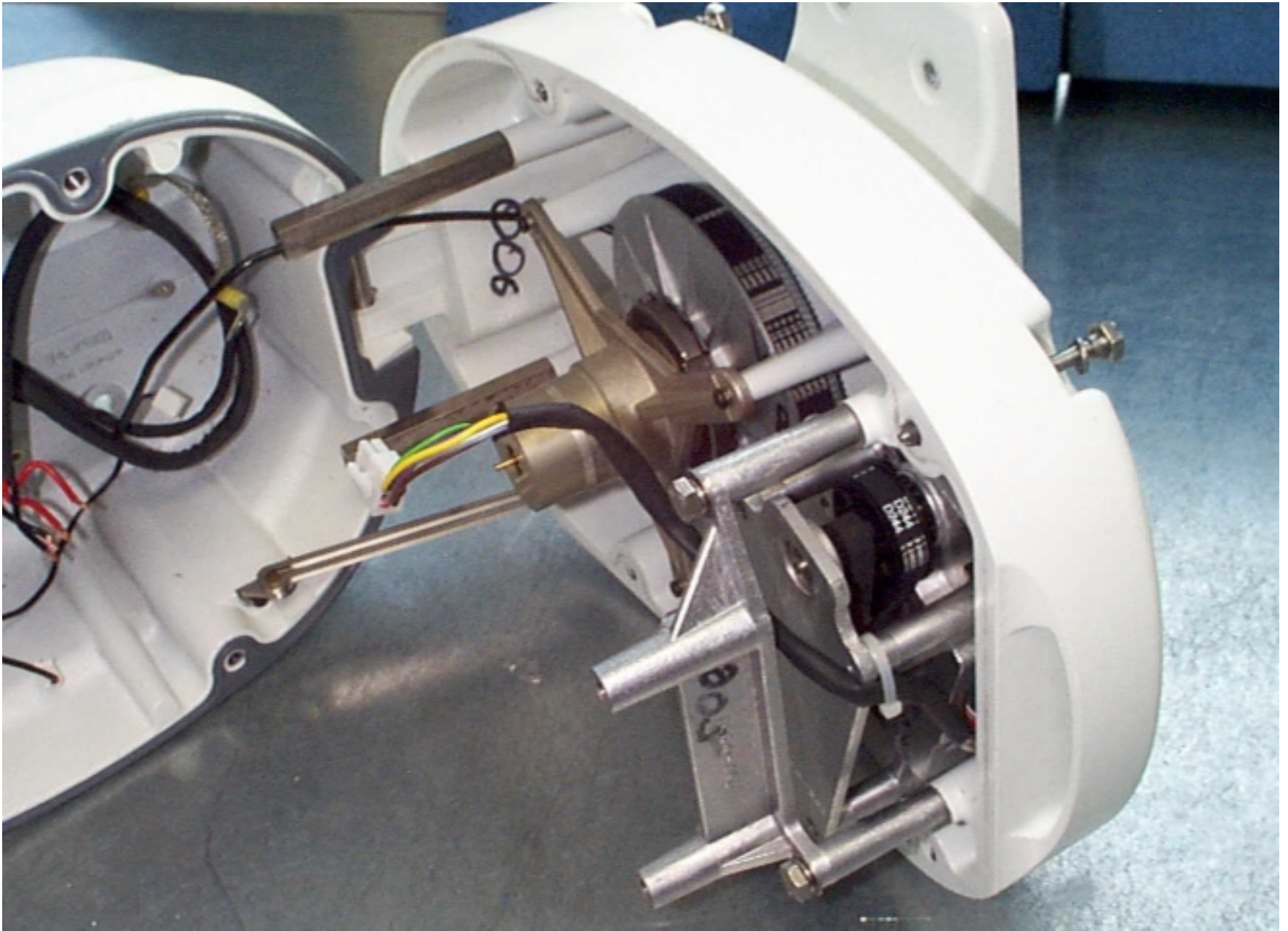
**Raytheon Pathfinder  
Series Radar**

ASLMTX9

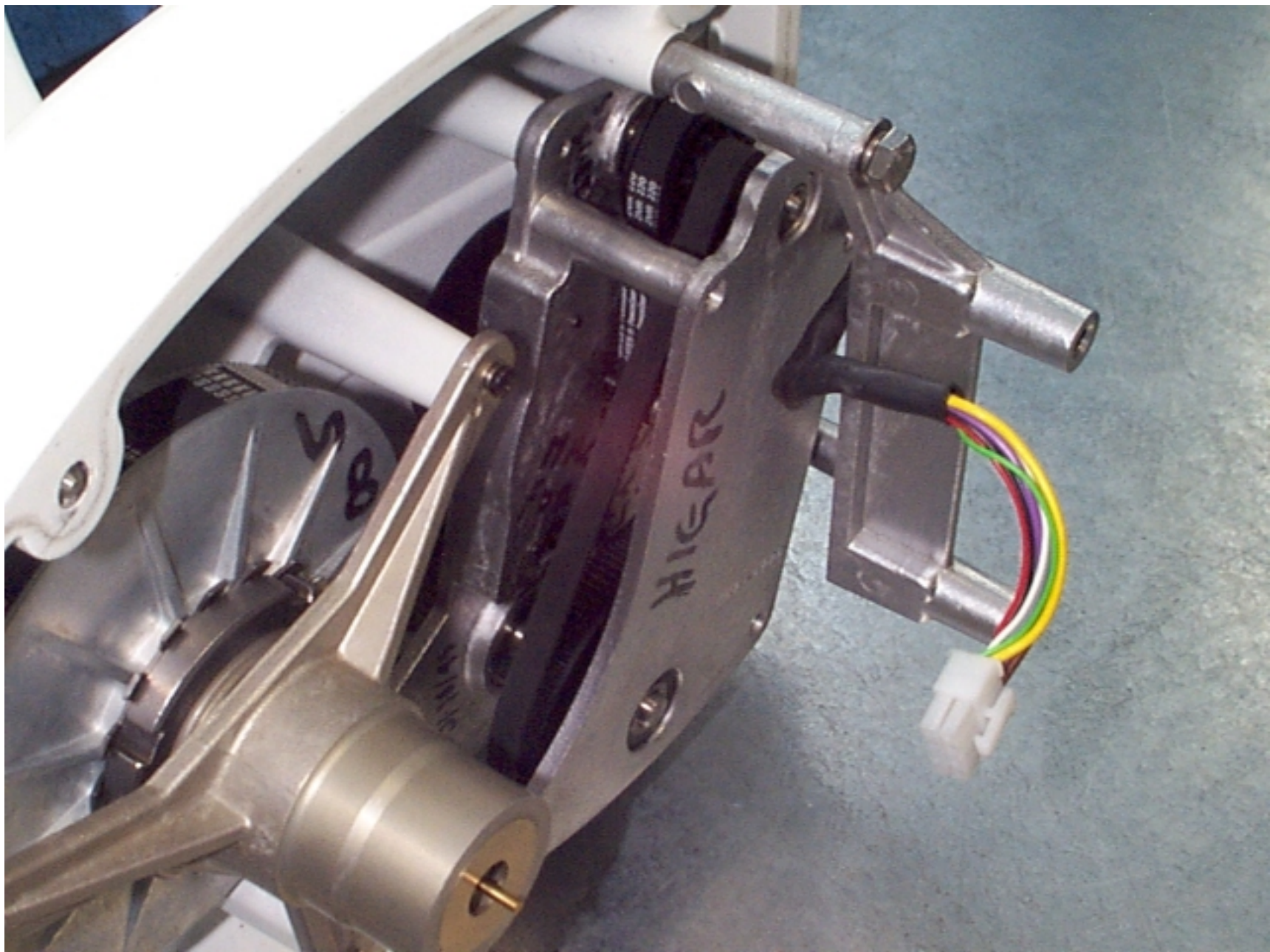
Internal Photographs



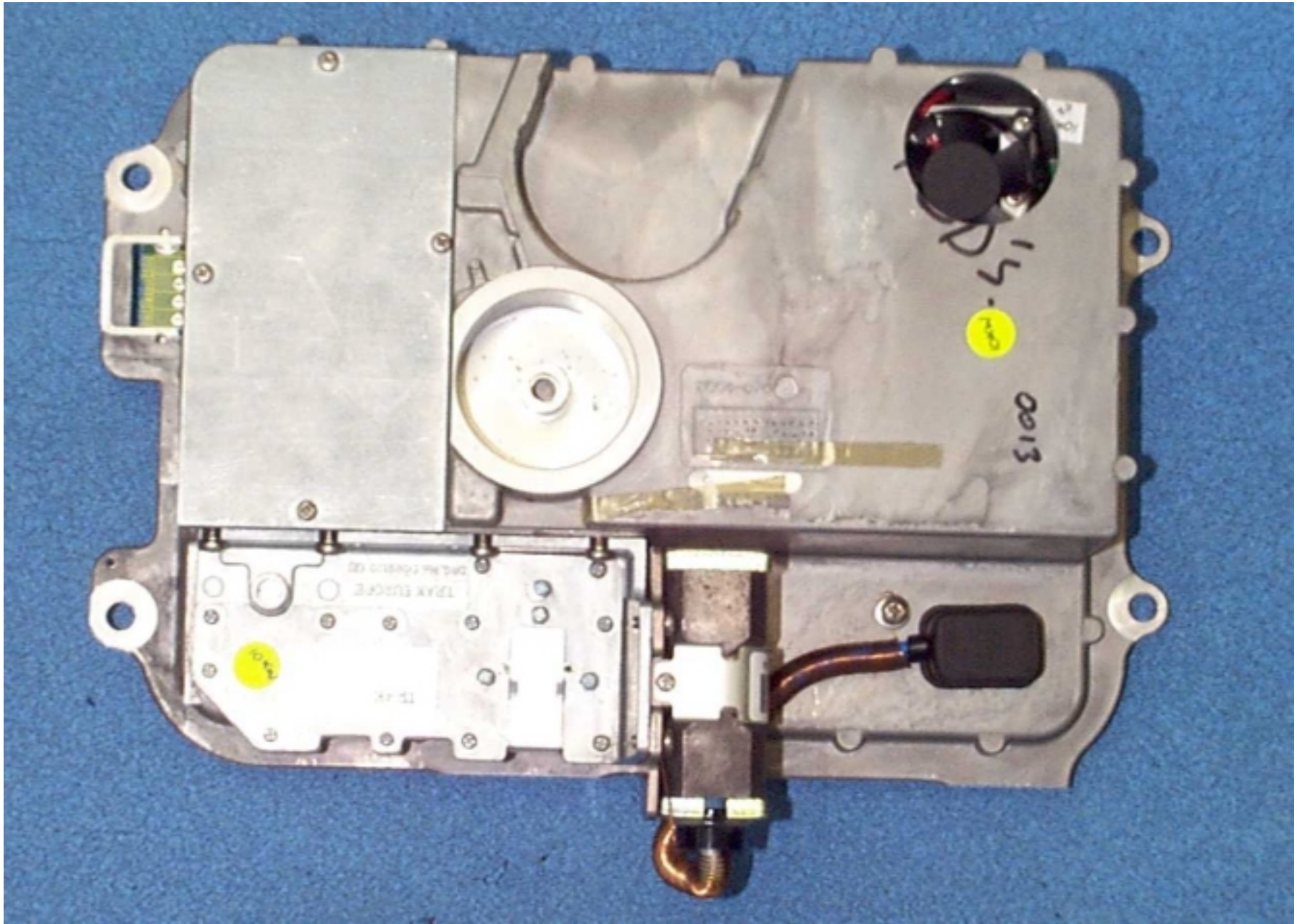
10kW, 48" Open Array Scanner Unit  
10kW Pedestal – Internal view



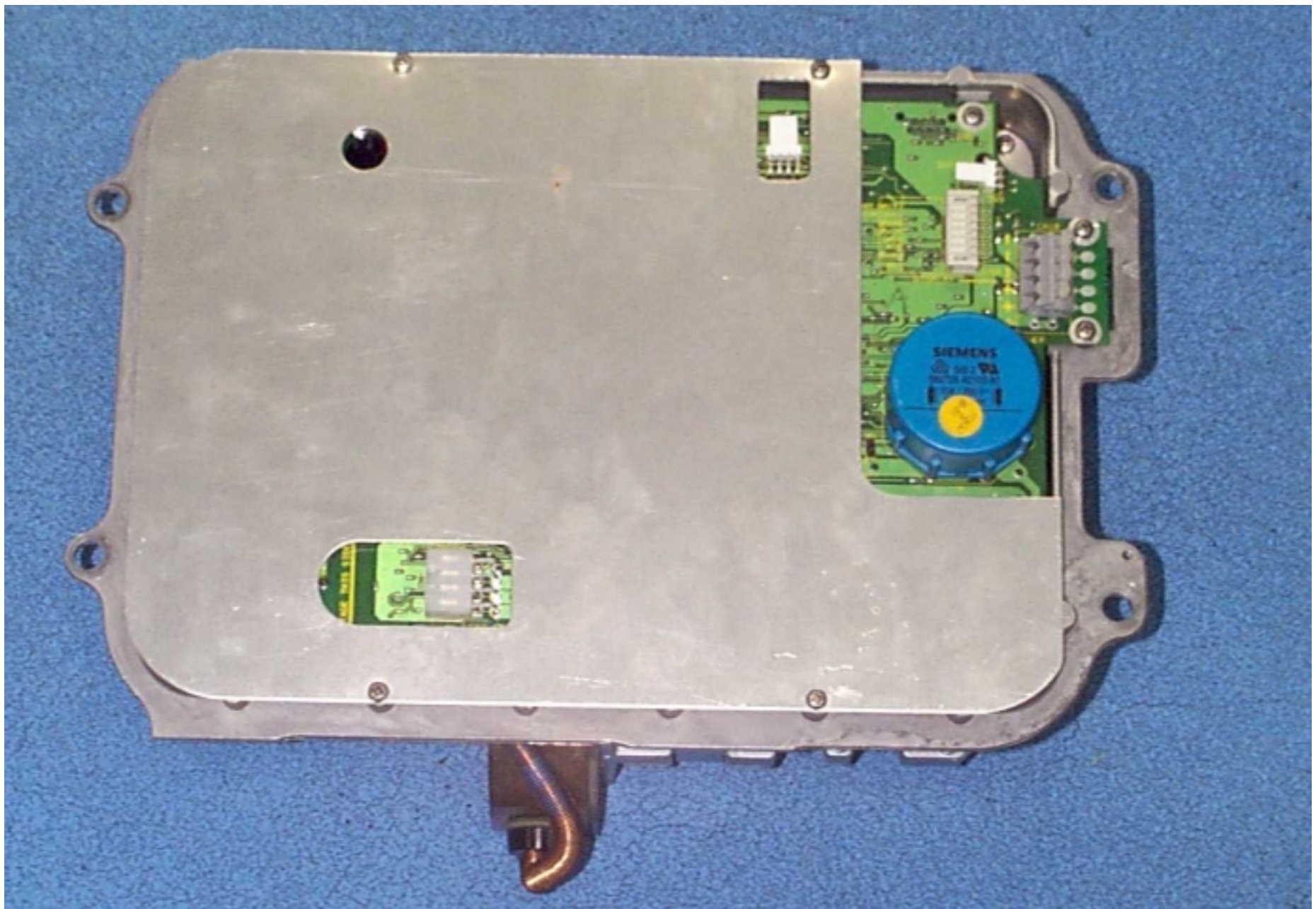
10kW, 48" Open Array Scanner Unit  
Gearbox and Co-axial Tube Assembly (View A)



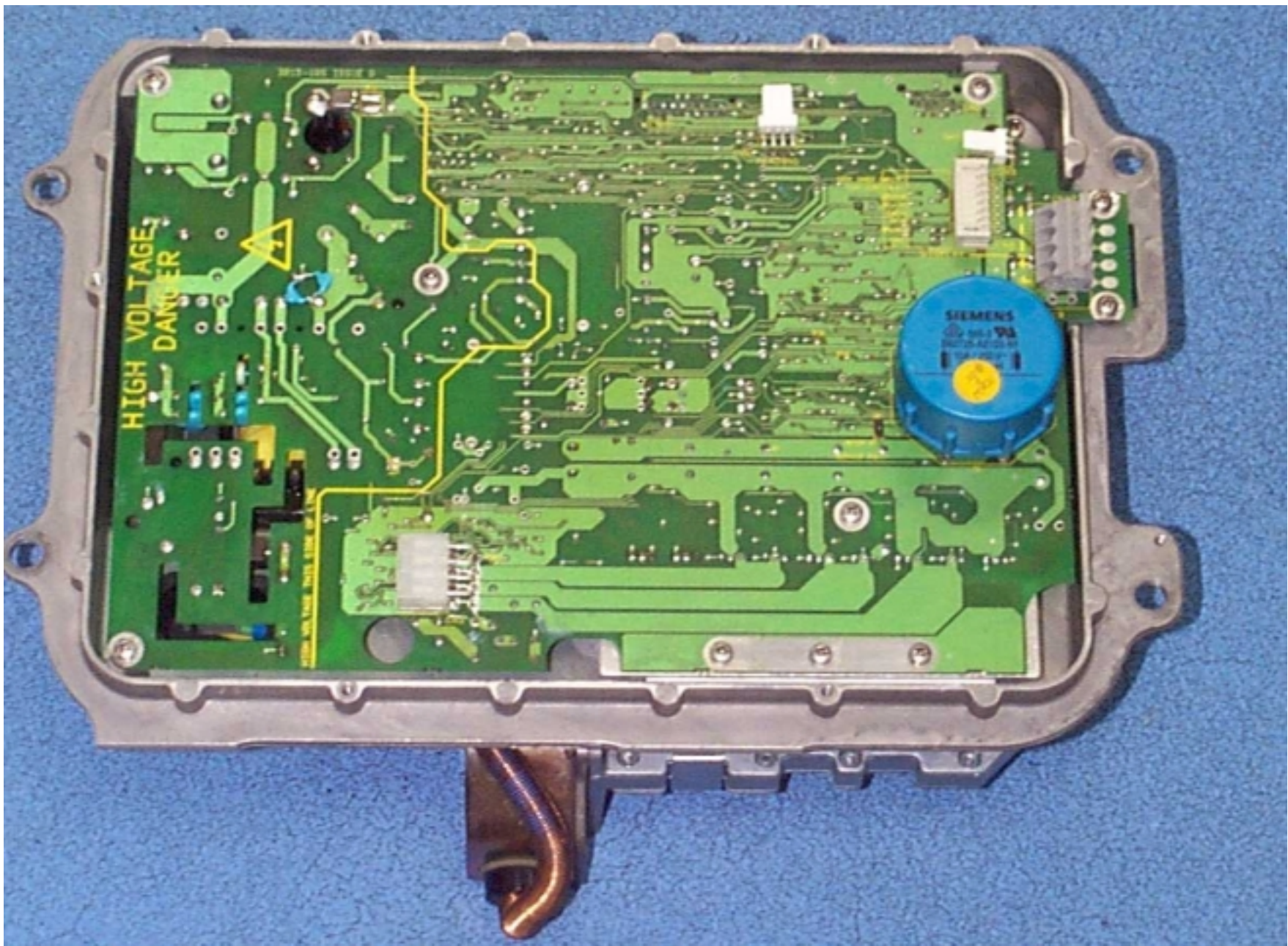
10kW, 48" Open Array Scanner Unit  
Gearbox and Co-axial Tube Assembly (View B)



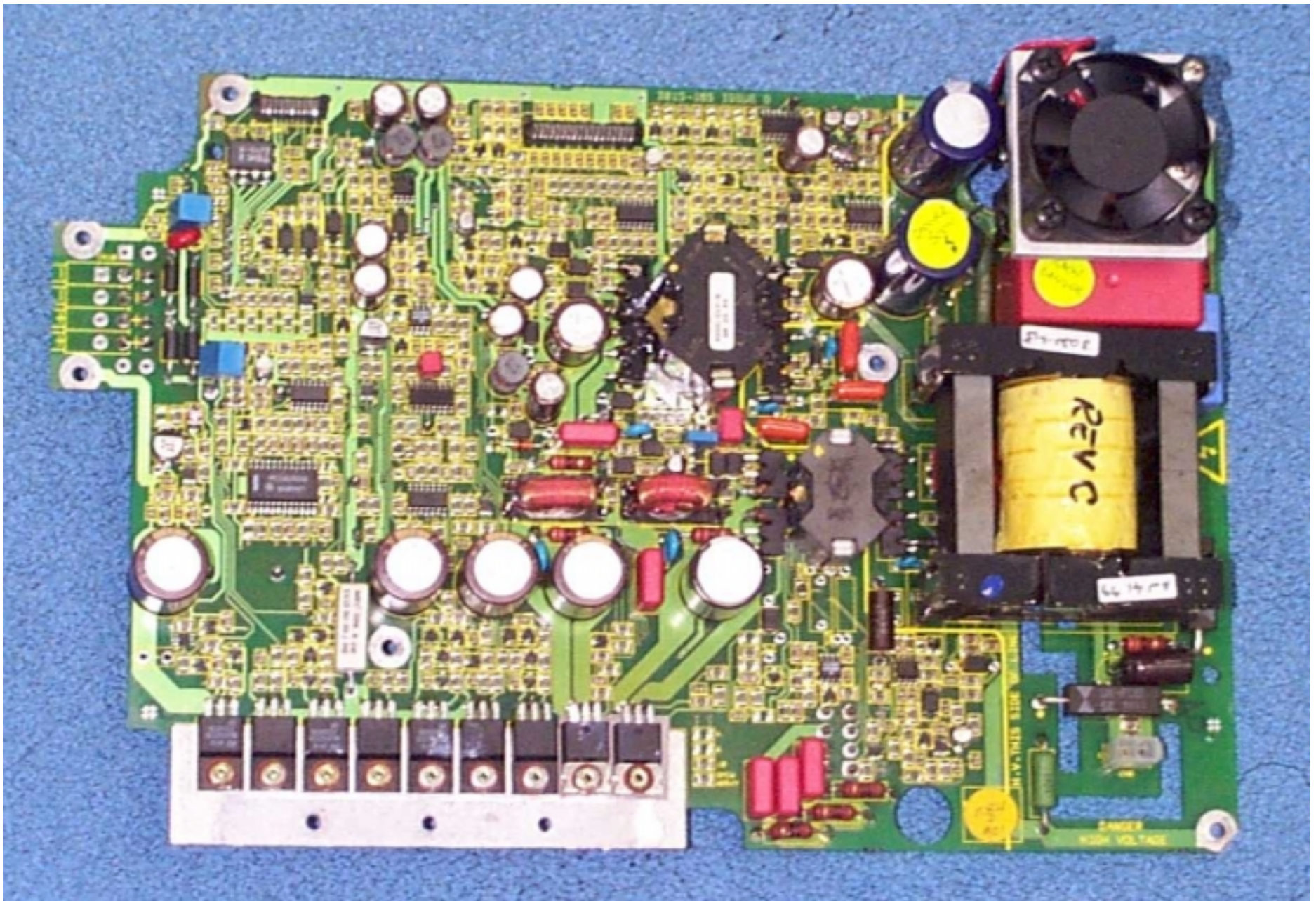
10kW, 48" Open Array Scanner Unit  
Core Assembly, including Magnetron and Circulator



10kW, 48" Open array Scanner  
Core Assembly – Lower view (Modulator/PSU PCB with screening plate fitted)

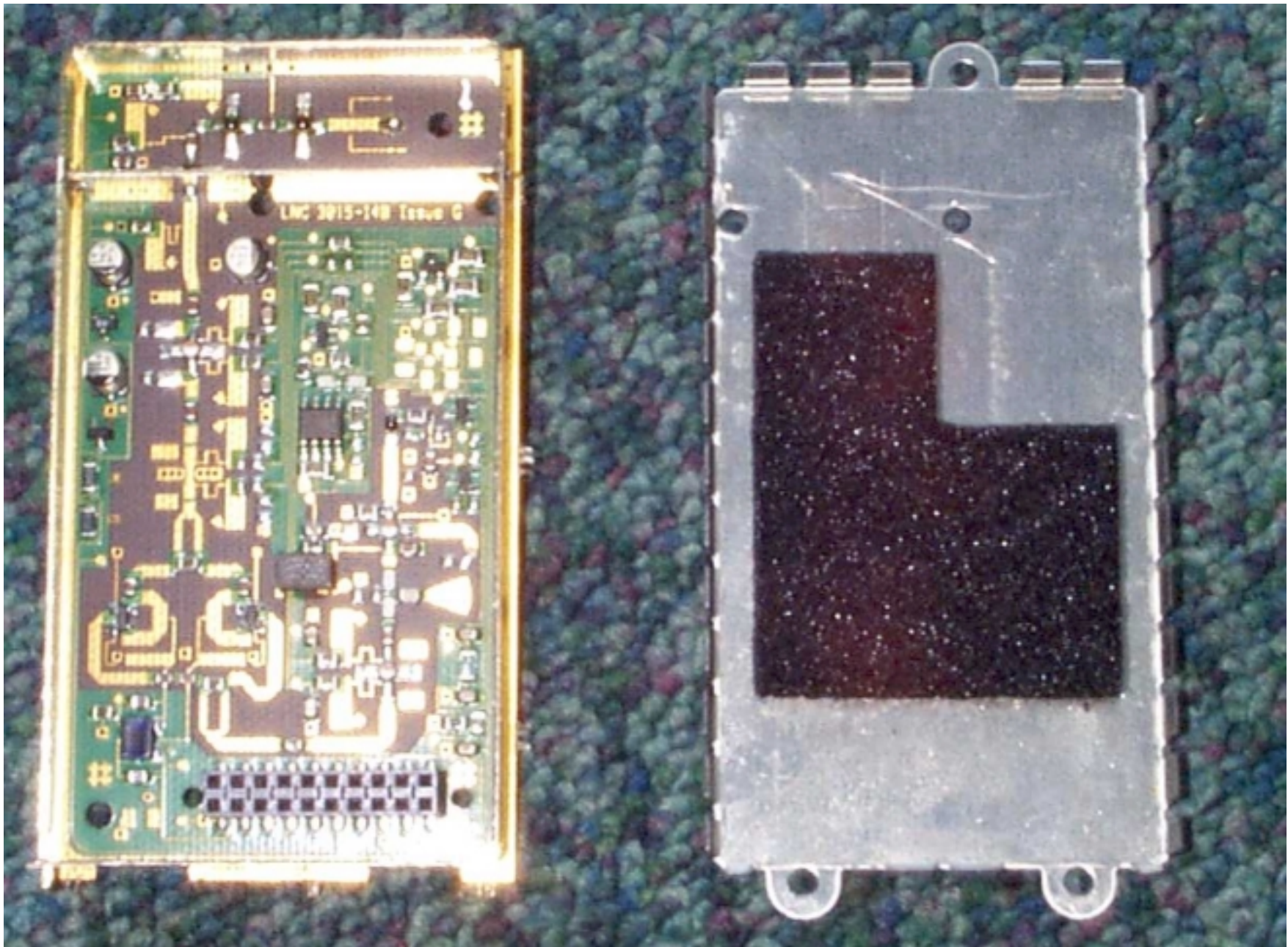


10kW, 48" Open Array Scanner unit  
10kW Modulator/PSU PCB with screening plate removed

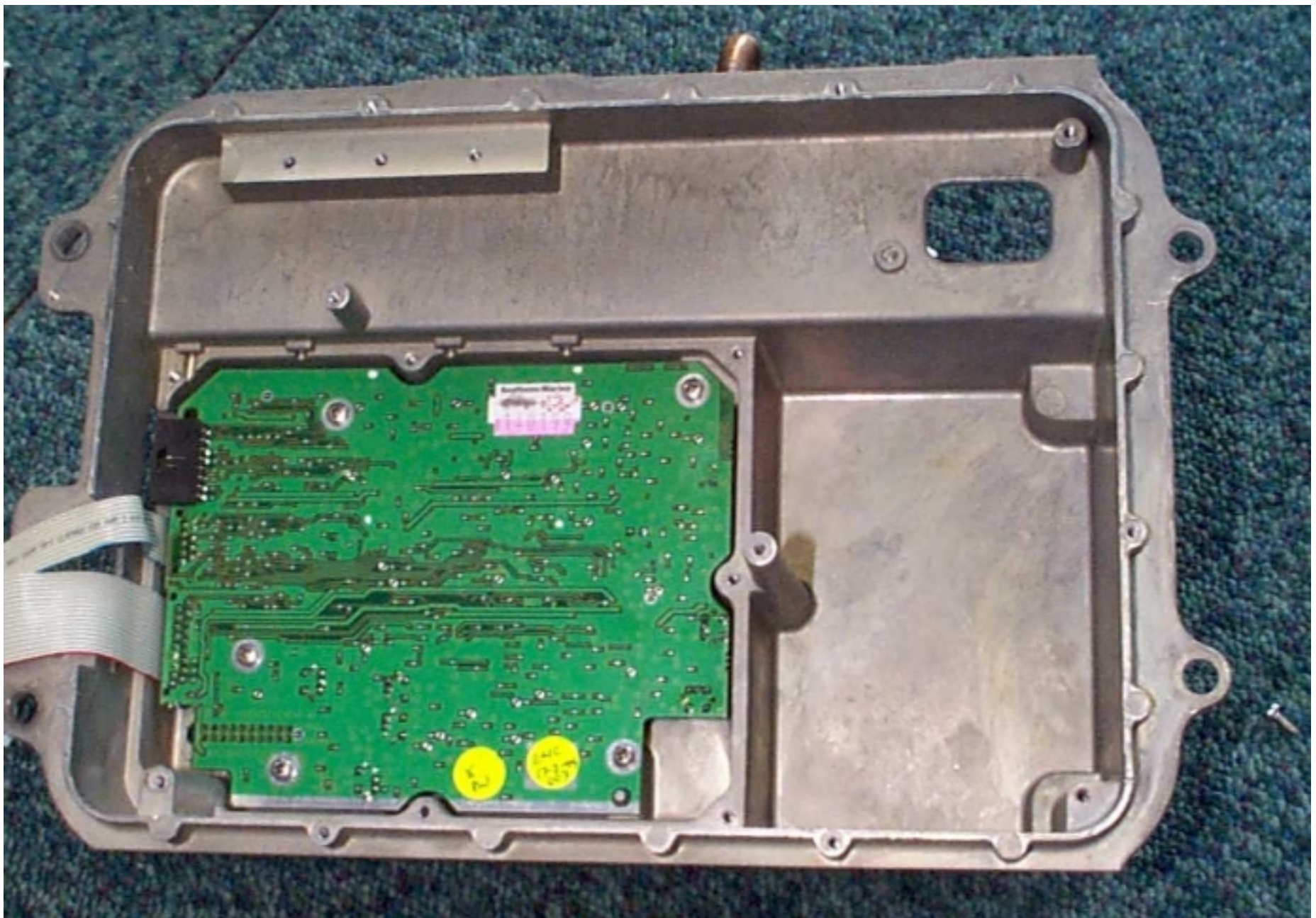


10kW, 48" Open array Scanner Unit  
10kW Modulator/PSU PCB

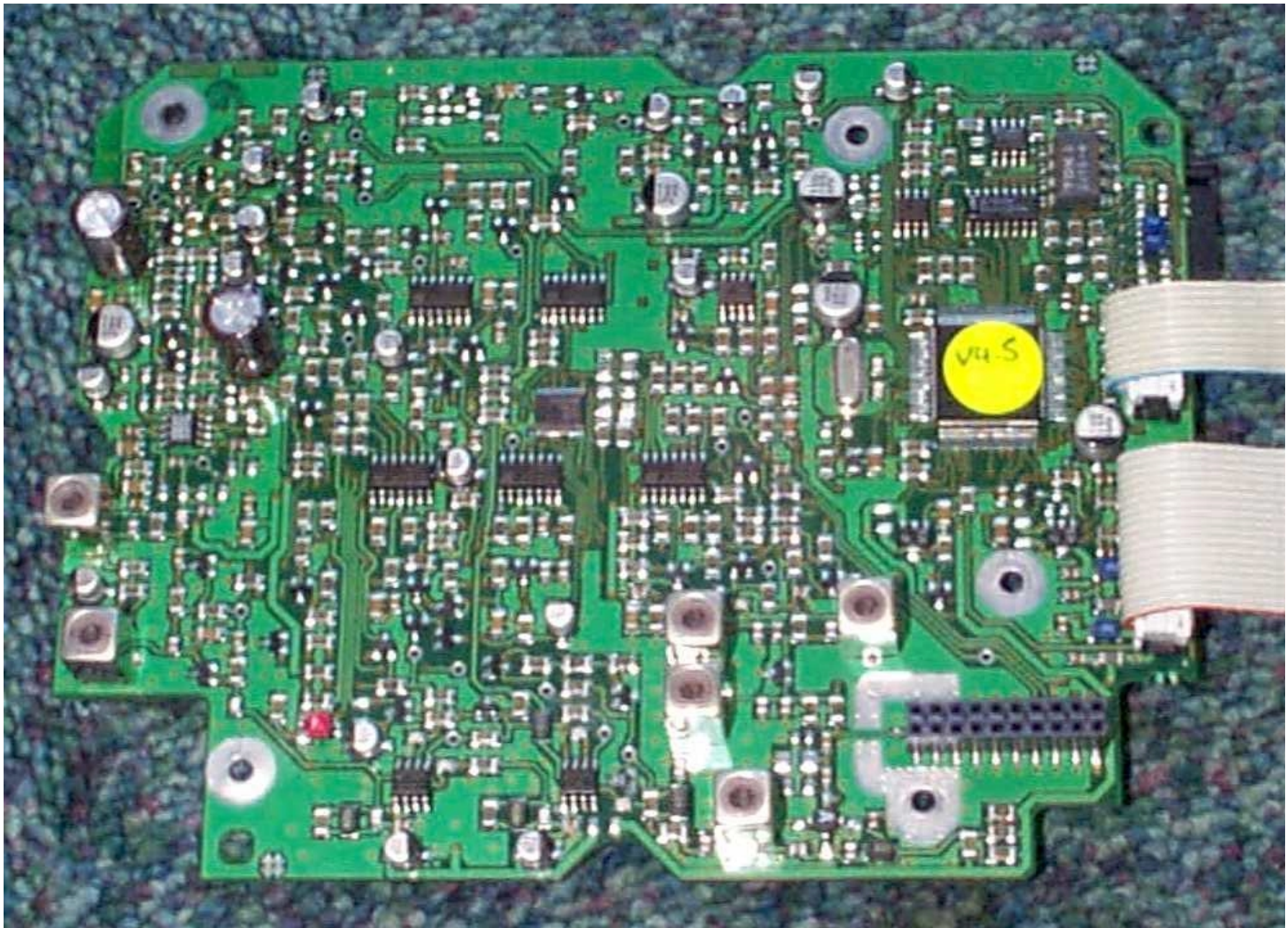




10kW, 48" Open Array Scanner Unit  
Low Noise Converter (LNC) Assembly and screening lid



10kW, 48" Open Array Scanner Unit  
IF PCB – Lower view



10kW, 48" Open Array Scanner Unit  
IF PCB