

RADIO FREQUENCY INVESTIGATION LTD.

Microwave Type Approval Department

Test Of: Raytheon Marine Pathfinder R75RC
To: FCC Part 80 and FCC Part 2**TEST REPORT**

S.No. RFI/MICB2/RP38756JD01

Page 37 of 37

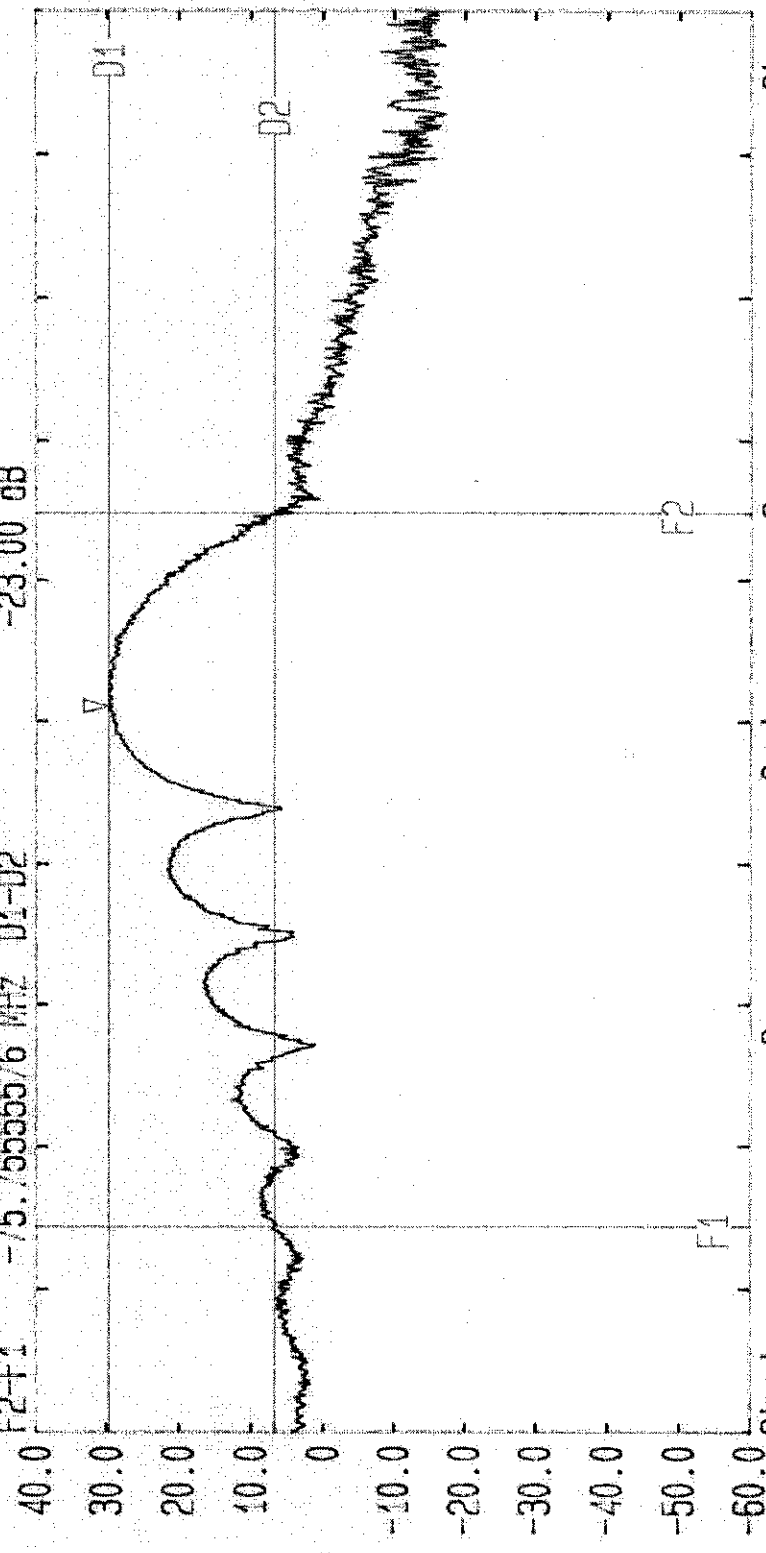
Issue Date: 25 May 1999

Graph Reference Number	Title Conducted Spurious Emissions
GPH/38756/JD01/033	Spurious Emissions 9.61 GHz to 9.91 GHz
GPH/38756/JD01/034	Spurious Emissions 9.61 GHz to 9.91 GHz
GPH/38756/JD01/035	Spurious Emissions 9.61 GHz to 9.91 GHz
GPH/38756/JD01/036	Spurious Emissions 9.61 GHz to 9.91 GHz
GPH/38756/JD01/037	Spurious Emissions 9.61 GHz to 9.91 GHz
GPH/38756/JD01/038	Spurious Emissions 9.61 GHz to 9.91 GHz
GPH/38756/JD01/039	Spurious Emissions 9.61 GHz to 9.91 GHz
GPH/38756/JD01/040	Spurious Emissions 9.61 GHz to 9.91 GHz
Graph Reference Number	Title Measured Pulse
GPH/38756/JD01/001A	60ns Pulse Width
GPH/38756/JD01/002A	90ns Pulse Width
GPH/38756/JD01/003A	150ns Pulse Width
GPH/38756/JD01/004A	250ns Pulse Width
GPH/38756/JD01/005A	350ns Pulse Width
GPH/38756/JD01/006A	450ns Pulse Width
GPH/38756/JD01/007A	600ns Pulse Width
GPH/38756/JD01/008A	1000ns Pulse Width
Graph Reference Number	Title Occupied Bandwidth
GPH/38756/JD01/052	60ns Pulse Width
GPH/38756/JD01/051	90ns Pulse Width
GPH/38756/JD01/050	150ns Pulse Width
GPH/38756/JD01/049	250ns Pulse Width
GPH/38756/JD01/048	350ns Pulse Width
GPH/38756/JD01/047	450ns Pulse Width
GPH/38756/JD01/046	600ns Pulse Width
GPH/38756/JD01/045	1000ns Pulse Width

These pages are not included in the total number of pages for this report.

LVLOFF
 Date 06.Apr.'99 Time 16:47:06
 Res.Bw 1.0 MHz [3dB] Vid.Bw 1 MHz
 Ref.Lvl 40.00 dBm
 Marker 29.92 dBm
 CF.Stp 15.000 MHz RF.Att 15 dB
 Unit

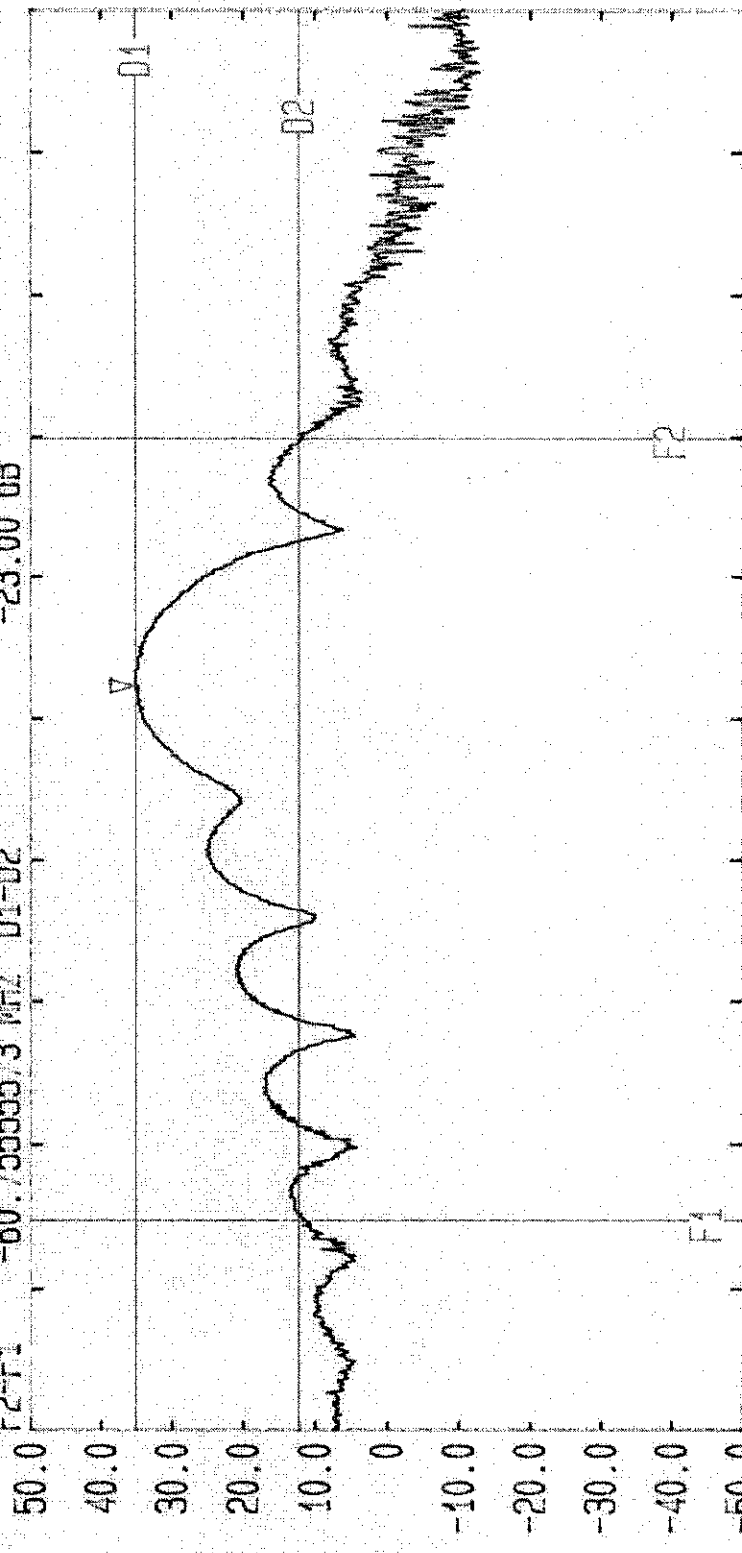
F1 9.3308222214 GHz D1 29.92 dBm
 F2 9.4065777790 GHz D2 6.92 dBm
 F2-F1 -75.7555576 MHz D1-D2 -23.00 dB



Start 9.3092 GHz Span 150 MHz Center 9.3842 GHz Sweep Stop 9.4592 GHz
 Occupied Bandwidth measured for Raytheon Marine by RFI FCC CFR47 2.1049 (i) 80.205 (a)
 EUT: R75RC Supply 13.8Vdc Temp: 20.2'C Alt: 51% Pulse Width: 60ns GPH/38756/JD01/052

LVLOFF
 Date 06.Apr.'99 Time 16:44:15
 Ref.Lvl 50.00 dBm
 Marker 35.48 dBm
 Res.Bw 1.0 MHz [3dB] Vid.Bw 1 MHz
 CF.Stp 11.000 MHz RF.Att 15 dB
 Unit [dBm]

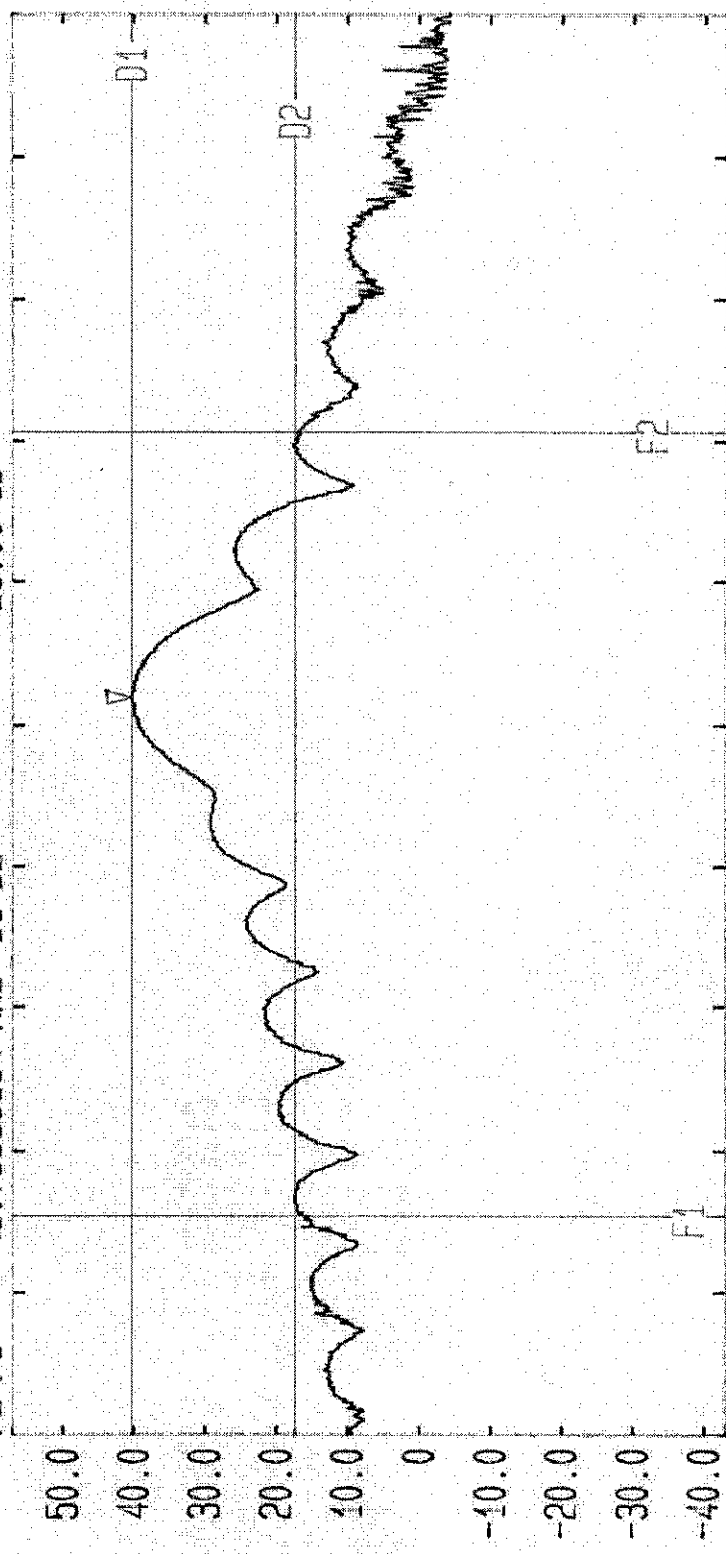
F1 9.3479888882 GHz D1
 F2 9.4087444455 GHz D2
 F2-F1 -60.7555573 MHz D1-D2
 35.48 dBm
 12.48 dBm
 -23.00 dB



Start 9.3317 GHz Span 110 MHz Center 9.3867 GHz Stop 9.4417 GHz
 Sweep 20 ms
 Occupied Bandwidth measured for Raytheon Marine by RFI FCC CFR47 2.1049(i) 80.205(a)
 EUT: A75HC Supply 13.8Vdc Temp: 20.2'C RH: 51% Pulse Width: 90ns GPH/38756/JD01/051

LVLOFF '99 Time 16:38:59
 Date 06.Apr.1999
 Ref.Lvl 57.00 dBm
 Marker 40.35 dBm
 Res.Bw 1.0 MHz [3dB] Vid.Bw 1 MHz
 CF.Stp 9.000 MHz RF.Att 15 dB
 Unit [dBm]

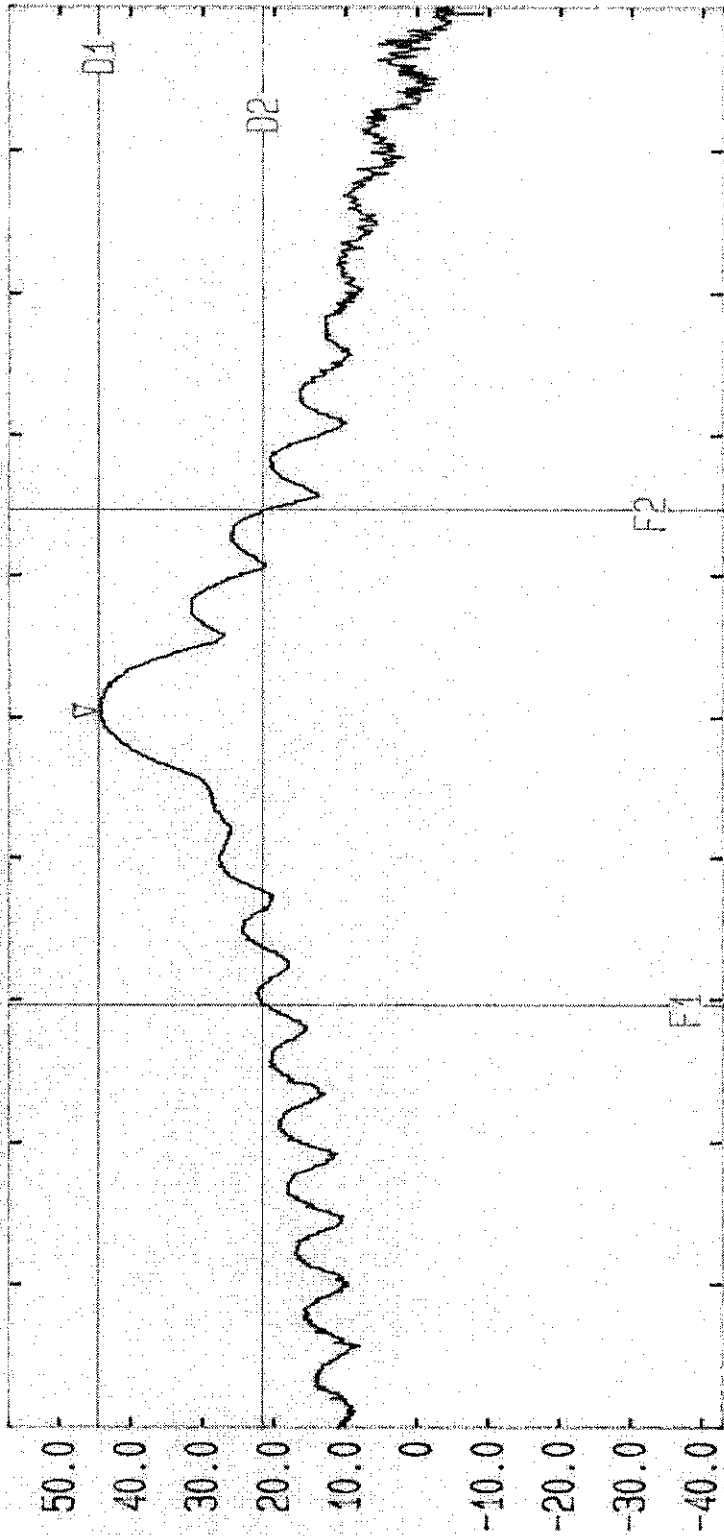
F1 9.35568888884 GHz D1 40.35 dBm
 F2 9.40544444448 GHz D2 17.35 dBm
 F2-F1 -49.75555564 MHz D1-D2 -23.00 dB



Start 9.34178 GHz Span 90 MHz Center 9.38678 GHz Sweep 20 ms Stop 9.43178 GHz
 Occupied Bandwidth measured for Raytheon Marine by RFI FCC CFR47 2.1049 (b) 80.205 (a)
 EUT: A75RC Supply 13.8Vdc Temp: 20.2°C RH: 51% Pulse Width: 150ns GPH/38756/JD01/050

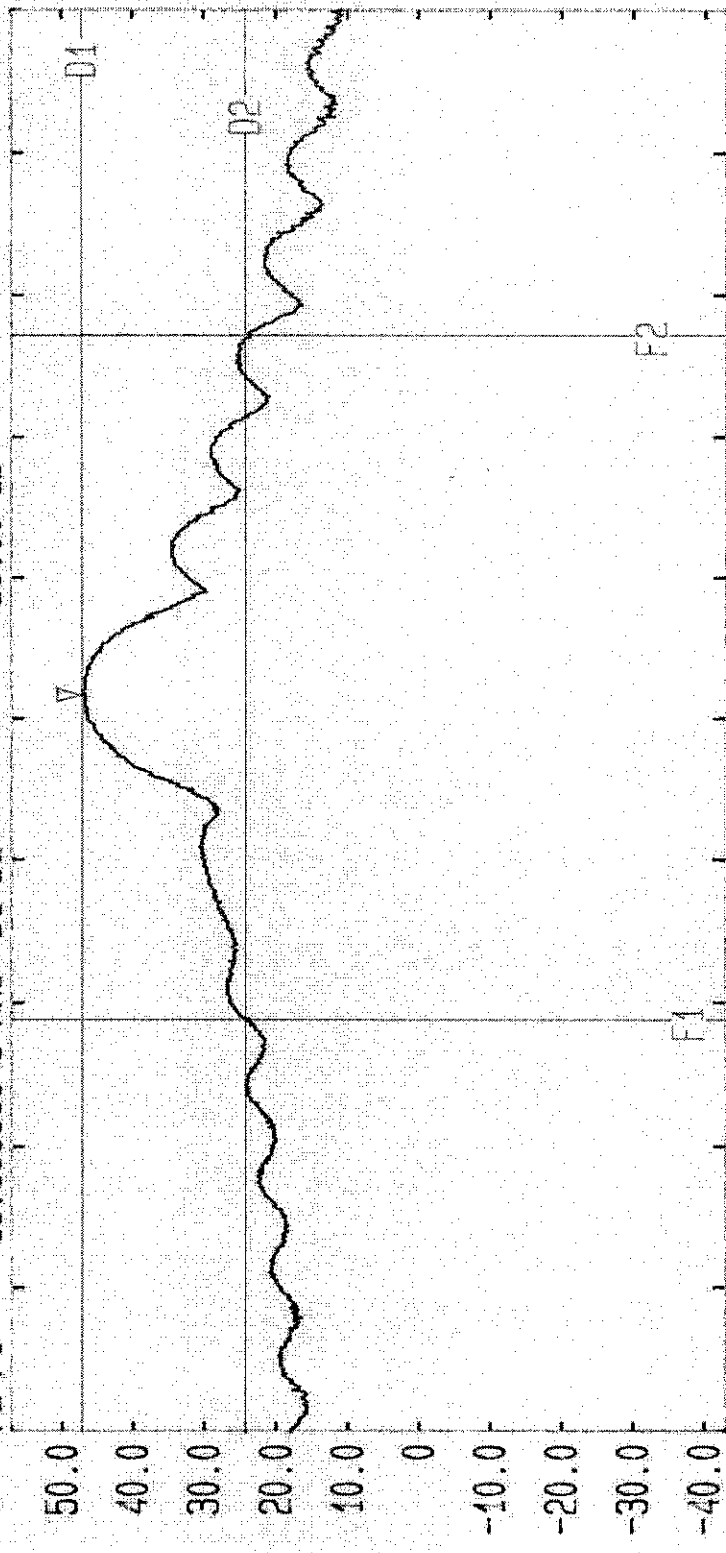
LVLOFF
 Date 06 Apr '99 Time 16:32:38
 Res.Bw 1.0 MHz [3dB] Vid.Bw 1 MHz
 Ref.Lvl 57.00 dBm Marker 44.61 dBm CF.Stp 8.000 MHz RF.Att 15 dB
 9.38732 GHz Unit

F1 9.3705888884 GHz D1 44.61 dBm
 F2 9.3985444448 GHz D2 21.61 dBm
 F2-F1 -27.95555564 MHz D1-D2 -23.00 dB



Start 9.34678 GHz Span 80 MHz Center 9.38678 GHz Sweep 20 ms Stop 9.42678 GHz
 Occupied Bandwidth measured for Raytheon Marine by RFI FCC CFR47 2.1049(i) 80.205(a)
 EUT: R75RC Supply 13.8Vdc Temp: 20.2°C RH: 51% Pulse Width: 250ns GPH/38756/J001/049

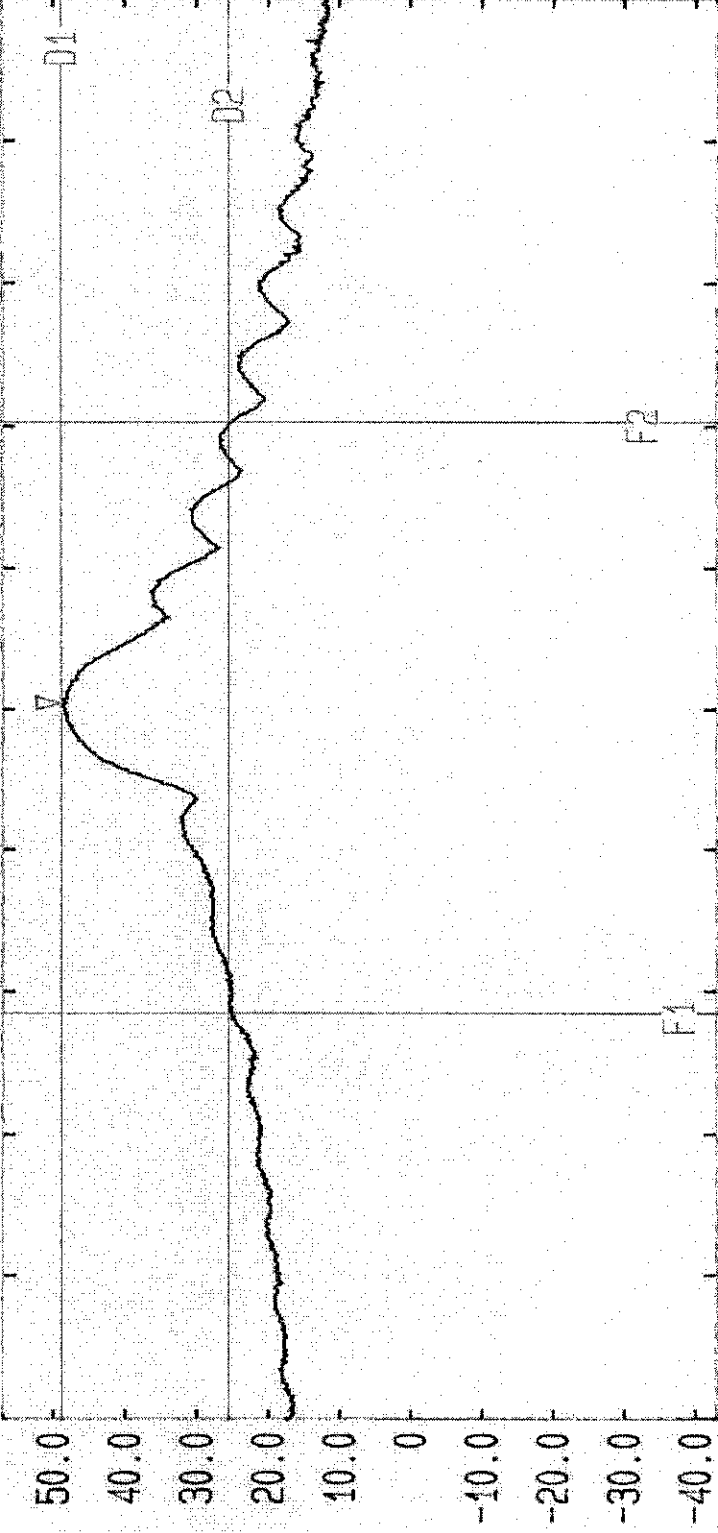
LVLOFF
 Date 06 Apr '99 Time 16:29:08
 Res.Bw 1.0 MHz [3dB] Vid.Bw 1 MHz
 Ref.Lvl 57.00 dBm Marker 47.13 dBm CF.Stp 4.000 MHz RF.Att 15 dB [dBm]
 9.38563 GHz
 F1 9.37645555550 GHz D1 47.13 dBm
 F2 9.39578888893 GHz D2 24.13 dBm
 F2-F1 -19.33333343 MHz D1-D2 -23.00 dB



Start 9.36487 GHz Span 40 MHz Center 9.38487 GHz Sweep 20 ms Stop 9.40487 GHz
 Occupied Bandwidth measured for Raytheon Marine by RFI FCC CFR47 2.1049 (i) 80.205 (a)
 EUT: A75RC Supply 13.8Vdc Temp: 20.2°C RH: 51% Pulse Width: 350ns GPH/38756/JD01/048

LVLOFF
 Date 06 Apr '99 Time 16:26:24
 Res.Bw 1.0 MHz [3dB] Vid.Bw 1 MHz
 Ref.Lvl 57.00 dBm Marker 48.70 dBm
 CF.Stp 4.000 MHz RF.Att 15 dB [dBm]

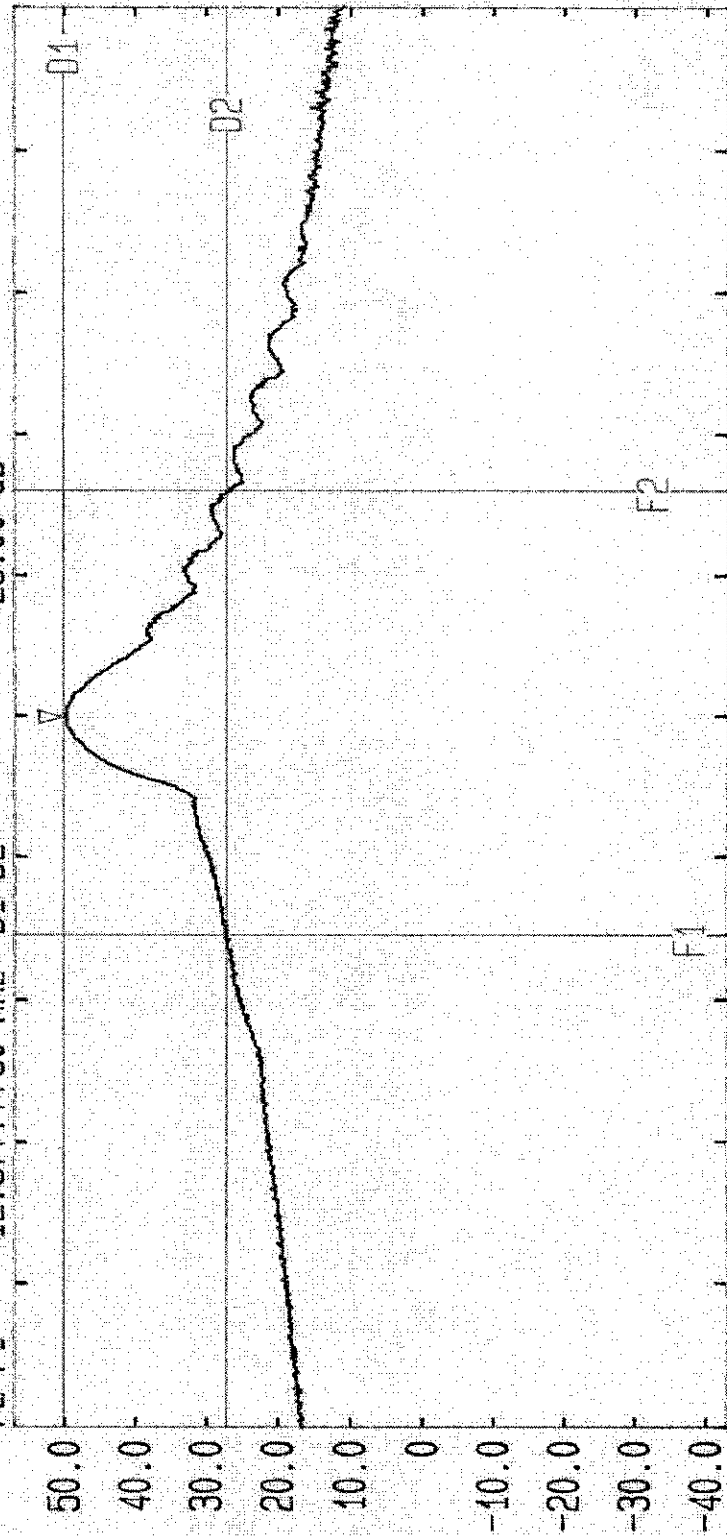
F1 9.3763222219 GHz D1 48.70 dBm
 F2 9.3930333336 GHz D2 25.70 dBm
 F2-F1 -16.71111117 MHz D1-D2 -23.00 dB



Start 9.36487 GHz Span 40 MHz Center 9.38487 GHz Sweep Stop 9.40487 GHz
 Occupied Bandwidth measured for Raytheon Marine by RFI FCC CFR47 2.1049(i) 80.205(a)
 EUT: R75AC Supply 13.8Vdc Temp: 20.2°C RH: 51% Pulse Width: 450ns 6PH/38756/JD01/047

LVLOFF
 Date 06 Apr '99 Time 16:23:37
 Res.Bw 1.0 MHz [3dB] Vid.Bw 1 MHz
 Ref.Lvl 57.00 dBm Marker 50.10 dBm AF Att 15 dB
 9.38492 GHz Unit

F1 9.3787222222 GHz D1
 F2 9.3913000000 GHz D2
 F2-F1 -12.5777780 MHz D1-D2

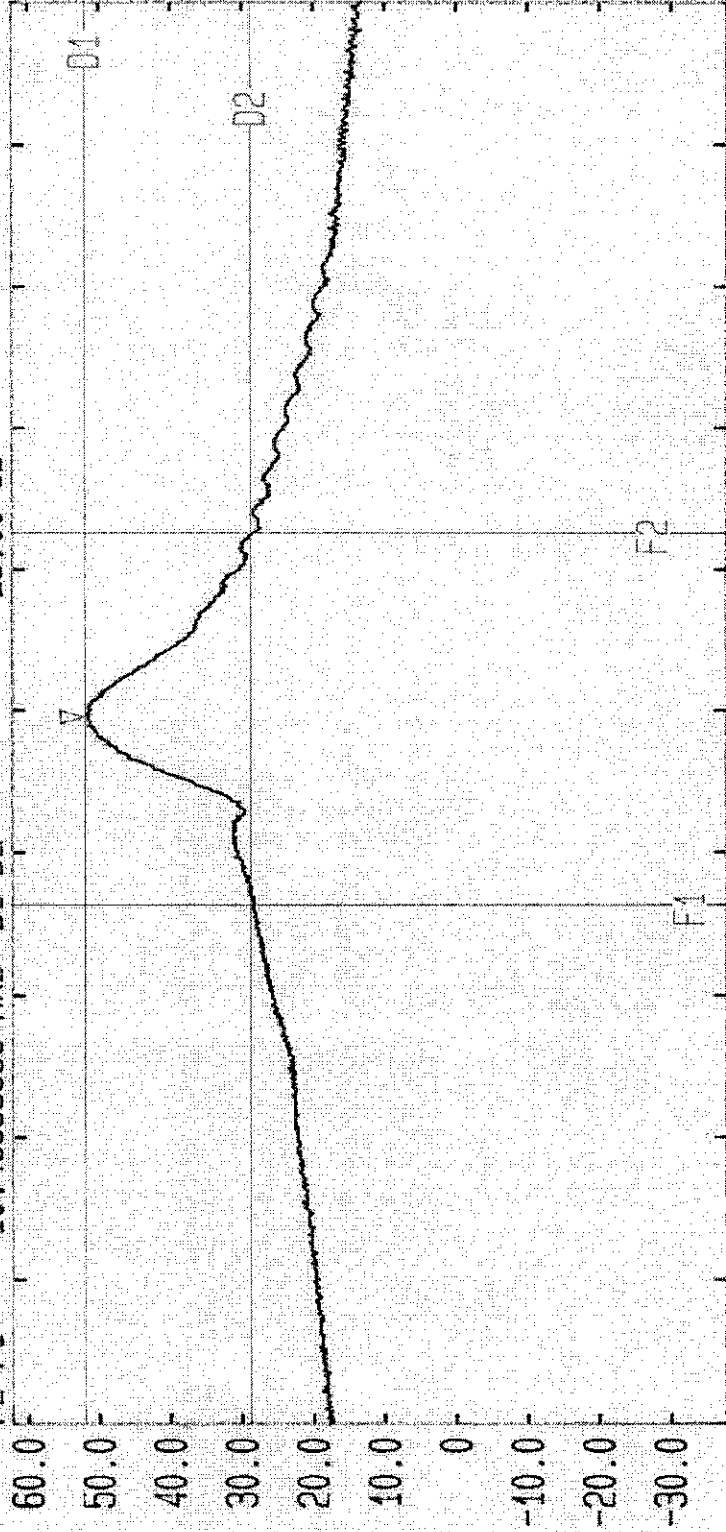


Start 9.36487 GHz Span 40 MHz Center 9.38487 GHz Sweep 20 ms Stop 9.40487 GHz

Occupied Bandwidth measured for Raytheon Marine by RFI FCC CFR47 2.1049(i) 80.205(a)
 EUT: A75RC Supply 13.8Vdc Temp: 20.2°C RH: 51% Pulse Width: 600ns GPH/38756/JD01/046

LVLOFF
 Date 06 Apr '99 Time 16:12:57
 Res.Bw 1.0 MHz [3dB] Vid.Bw 1 MHz
 Ref.Lvl 62.00 dBm
 Marker 51.75 dBm
 CF.Stp 4.000 MHz RF.Att 20 dB [dBm]
 Unit

F1 9.3804999999 GHz D1 51.75 dBm
 F2 9.3909888887 GHz D2 28.75 dBm
 F2-F1 -10.48888888 MHz D1-D2 -23.00 dB



Start 9.36594 GHz Span 40 MHz Center 9.38594 GHz Sweep Stop 9.40594 GHz
 Occupied Bandwidth measured for Raytheon Marine by RFI FCC CFR47 2.1049 (i) 80.205 (a)
 EUT: R75ARC Supply 13.8Vdc Temp: 20.2°C RH: 51% Pulse Width: 1us GPH/38756/JD01/045