

SEE NOTE 3.

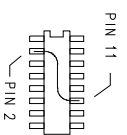
SEE NOTE 2.

SURFACE MOUNT COMPONENT SIDE

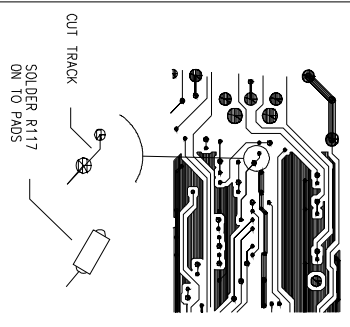
PCB 3015-185 ISSUE C

SEE NOTE 3.

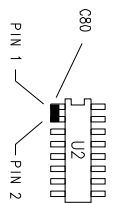
- NOTES:
1. HAND SOLDER C216 ON TOP OF R330.
 2. LIFT U11 PIN 11 & CONNECT TO PIN2 USING SLEEVED LINK WIRE AS SHOWN BELOW:



- 3a. CUT TRACK BETWEEN U1 PIN 6 & U2 PIN 2 ON COMPONENT UNDERSIDE. THEN HAND SOLDER R117 ACROSS THE CUT TRACKS AS SHOWN BELOW:



- 3b. HAND SOLDER C80 ACROSS U2 PINS 1 & 2 AS SHOWN BELOW:



REV	DESCRIPTION OF CHANGE	DATE
1	ISSUE	
2	SMI	
3	SMI	
4	SMI	
5	SMI	
6	SMI	
7	SMI	
8	SMI	

Rohm

THE INFORMATION CONTAINED HEREIN IS UNCLASSIFIED EXCEPT WHERE SHOWN OTHERWISE. IT IS THE PROPERTY OF ROHM AND IS LOANED TO YOUR ORGANIZATION. IT IS TO BE USED ONLY FOR THE PURPOSES AND DURATION SPECIFIED BY THIS AGREEMENT. ALL RIGHTS ARE RESERVED. ANY DISSEMINATION OF THIS INFORMATION IS STRICTLY PROHIBITED WITHOUT THE WRITTEN PERMISSION OF ROHM.

DATE: 9/10/2013
 DRAWN TO BS308
 SCALE: 2:1
 SHEET 2 OF 2

4357-013