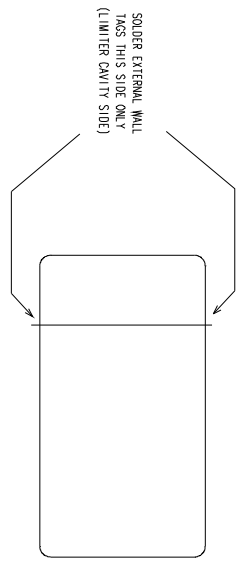


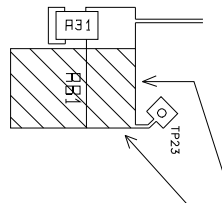
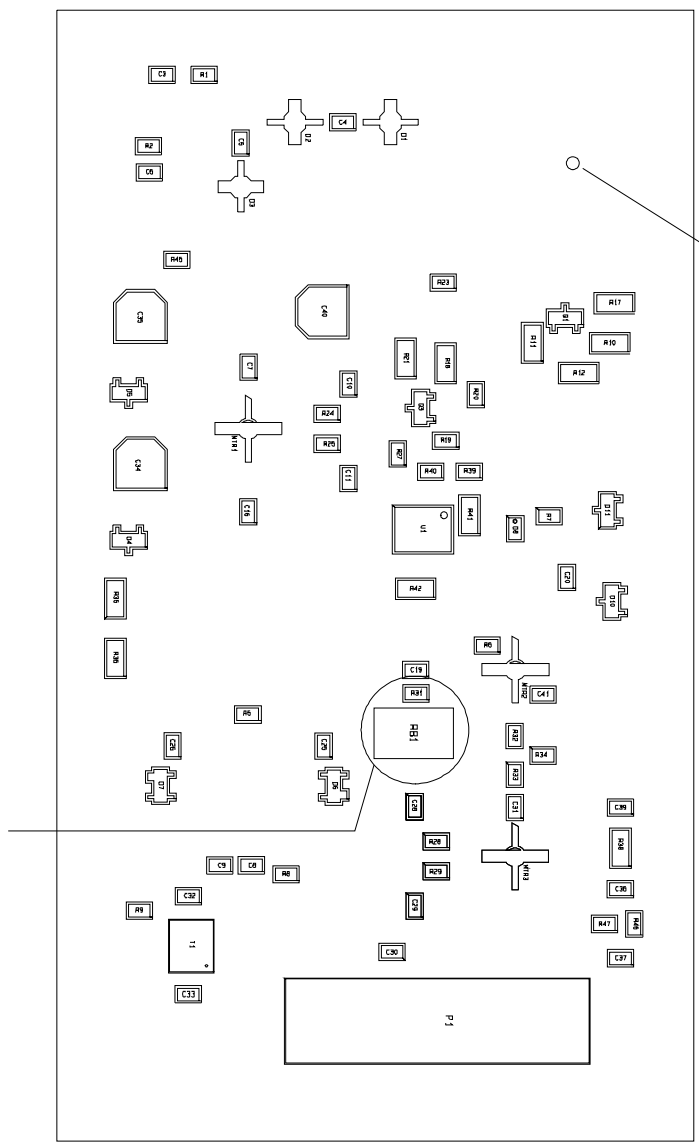
- NOTES:
1. SOLDER THE SCREEN CAN INTERNAL WALL TO THE EXTERNAL WALL AS SHOWN BELOW. THE TOP FACE OF THE INTERNAL WALL SHOULD BE FLUSH WITH THE TOP FACE OF THE OUTER SCREENING CAN.



2. PLACE SOLDER CAN ON PEG AND SOLDER TAPS ON THE NON-COMPONENT SIDE. ENSURE SOLDER DOES NOT FLOW BEYOND THE 'SOI HOLES' IN THE GROUND PLANE.
3. THE WIDE GROUND TABS OF 01.2,3 AND MFR1 2,3 MUST NOT OVERHANG THE GROUND TRACKING ONCE ASSEMBLED.
4. AT LEAST ONE VIA EITHER SIDE OF 01.2,3 AND MFR1 2,3 MUST BE FILLED, INDICATING AN ACCEPTABLE SOLDER JOINT NEAR THE BODY OF THE DEVICES.
5. RIV 1SE387C IS USED TO ATTACH THE RAW BLOCK 3011-073.

SURFACE MOUNT COMPONENTS

1	3015-140	1	P.C.B DIE HAT		
2	91027K	1	RESISTOR 0805 1K 5% 0.1W	R8	
3	91027K	6	RESISTOR 0805 10K 5% 0.1W	R7, R19, 23, 27, 46, 47	
4	910210R	2	RESISTOR 0805 100R 5% 0.1W	R9, R8	
5	910210R	3	RESISTOR 0805 10R 5% 0.1W	R25, 29, 31	
6	910238U	4	RESISTOR 0805 380U 5% 0.1W	R2, 33, 39, 40	
7	910247R	7	RESISTOR 0805 47R 5% 0.1W	R1, 2, 9, 20, 24, 28, 45	
8	910268U	1	RESISTOR 0805 680U 5% 0.1W	R34	
9	910310K	2	RESISTOR 1206 10K 1% 0.125W	R25, 36	
10	9103270R	1	RESISTOR 1206 270R 1% 0.125W	R12	
11	910356K	2	RESISTOR 1206 56K 1% 0.125W	R10, 18	
12	91060R0	1	RESISTOR 1206 0R0 0.125W	R38	
13	910612K	1	RESISTOR 1206 12K 5% 0.125W	R42	
14	910622K	2	RESISTOR 1206 220K 5% 0.125W	R17, 21	
15	-	-	-	-	-
16	9106X7	1	RESISTOR 1206 2X7 5% 0.125W	R11	
17	9106K7	1	RESISTOR 1206 4K7 5% 0.125W	R41	
18	93001000P	8	CAPACITOR 0805 1000P 2% C10, 11, 19, 28, 29, 36, 37, 39		
19	93010P5	14	CAPACITOR 0805 0.05F 5% 50V C3, 9, 16, 20, 25, 26, 30, 31, 41		
20	930139P	2	CAPACITOR 0805 0.05F 5% 50V C2, 33		
21	932410U	3	CAPACITOR ECG-VICAL005R 10UF 20% 16V C34, 35, 40		
22	92008A516	1	DIODE SOT23 BAS16	DI4	
23	92008A09	2	DIODE SOT23 BA99	DI0, 11	
24	92008A580	1	DIODE SOT23 HSMS2800-L31	DI5	
25	92008A14	2	DIODE SOT143 BA14-099	DI6, 7	
26	92008A14	1	DIODE LOW POWER LAMTER G247293-186	DI3	
27	92008A14	1	DIODE HIGH POWER LAMTER G247292-186	DI1	
28	92008A14	1	DIODE MEDIUM POWER LAMTER MSV94-089-0805	DI2	
29	92008A14	1	DIODE MEDIUM POWER LAMTER CC47361-186	DI3	
30	92008A14	2	TRANSISTOR SOT23 BSR184	MFR-1, 3	
31	9500FH35	3	TRANSISTOR FH35LP	MFR-1, 3	
32	9400K431	1	IC TL431C S08	UI	
33	9600BH1	1	TRANSFORMER CHIP NZ261-A	TI	
34	9600CH10	1	CONNECTOR 20WAY CLH-110-F-D-D-1R	PI	
35	3011-073	1	RAW BLOCK	RBT	
36	4346-021	1	SCREEN CAN FRAME ASSEMBLY		
37	42082	1	RIV 1SE387C		
38	3034-010P	1	LAUNCH PIN ASSEMBLY		
39	3034-010P	1	LAUNCH PIN ASSEMBLY		
40	3034-010P	1	LAUNCH PIN ASSEMBLY		



REV	DESCRIPTION OF CHANGE	DATE
0	INITIAL DESIGN	10/26/07
1	DESIGN CHANGES TO 3015-140	11/08/08
2	DESIGN CHANGES TO 3015-140	11/08/08
3	DESIGN CHANGES TO 3015-140	11/08/08
4	DESIGN CHANGES TO 3015-140	11/08/08
5	DESIGN CHANGES TO 3015-140	11/08/08
6	DESIGN CHANGES TO 3015-140	11/08/08
7	DESIGN CHANGES TO 3015-140	11/08/08
8	DESIGN CHANGES TO 3015-140	11/08/08
9	DESIGN CHANGES TO 3015-140	11/08/08
10	DESIGN CHANGES TO 3015-140	11/08/08

**Autobahn**

THE INFORMATION CONTAINED HEREIN IS UNCLASSIFIED EXCEPT WHERE SHOWN OTHERWISE. IT IS THE PROPERTY OF AUTOBahn AND IS LOANED TO YOUR ORGANIZATION. IT IS TO BE USED ONLY FOR THE PURPOSES SPECIFIED AND IS NOT TO BE REPRODUCED OR TRANSMITTED IN ANY FORM OR BY ANY MEANS, ELECTRONIC OR MECHANICAL, INCLUDING PHOTOCOPYING, RECORDING, OR BY ANY INFORMATION STORAGE AND RETRIEVAL SYSTEM, WITHOUT THE PERMISSION OF AUTOBahn.

TOLERANCES UNLESS OTHERWISE STATED:  
 DIMENSIONS: IN MM  
 FINISH: XXXXXX  
 SCALE: XX

DRAIN TO BS308 DO NOT SCALE - 1F IN DOTTED ASK  
 REGION: GERMANY  
 APPROVED: [Signature]  
 DATE: 27.08.2008  
 DRAWING NO.: 4346-006  
 SHEET 1 OF 1