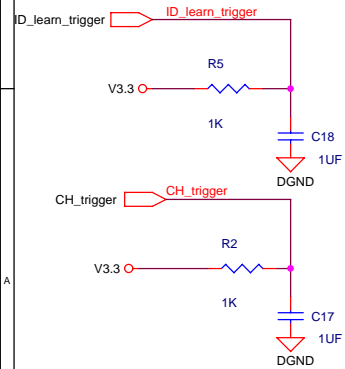
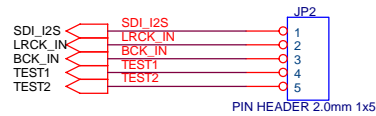
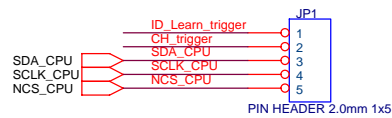
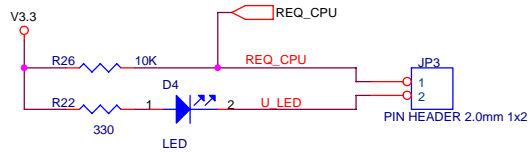
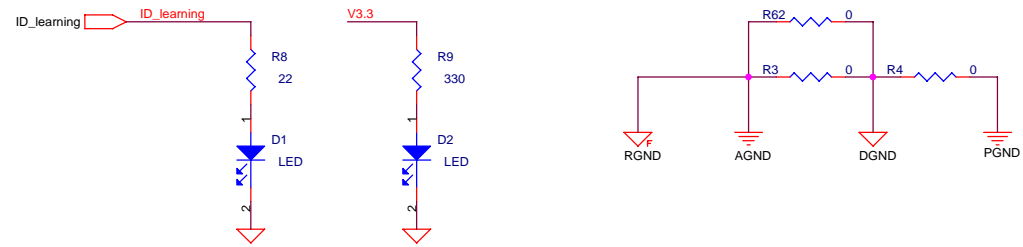
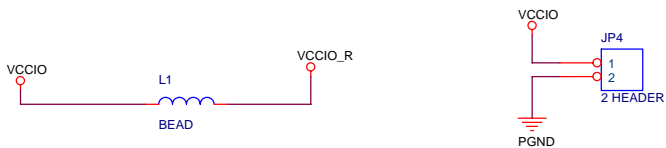
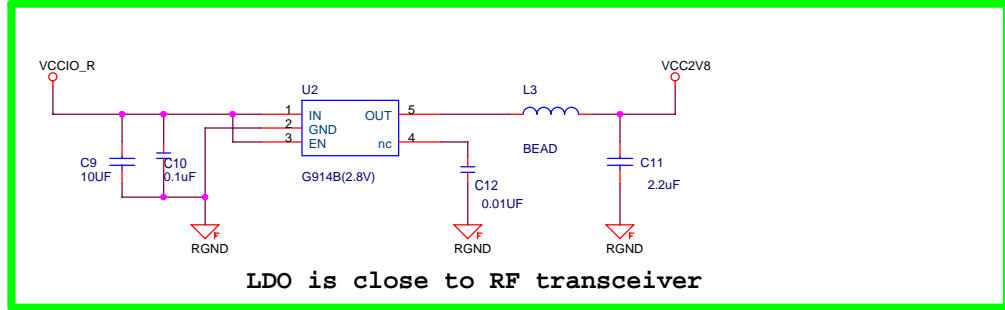
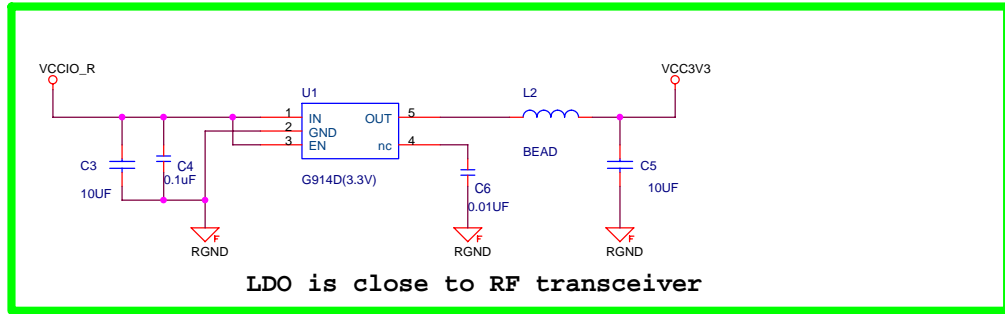
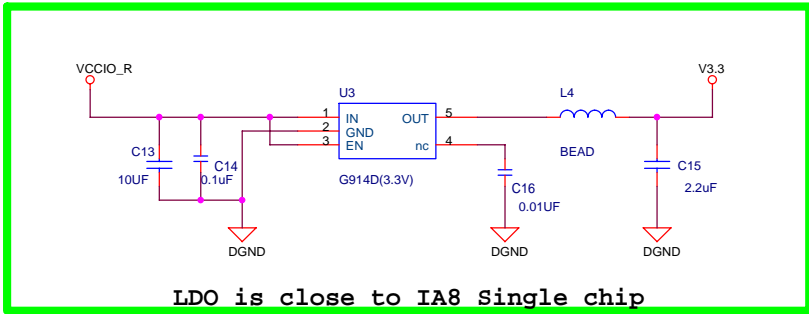
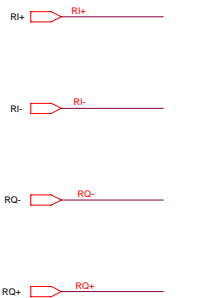


Title	<Title>	Rev	
Size	Document Number		
C	<Doc>		<RevCode>
Date:	Tuesday, December 07, 2004	Sheet	1 of 1

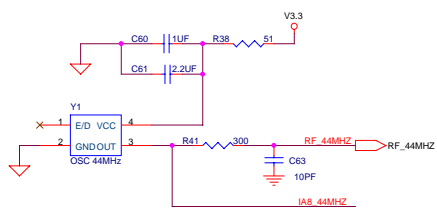
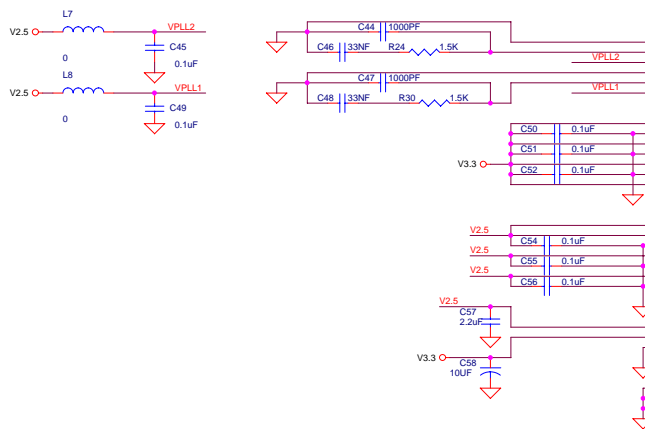
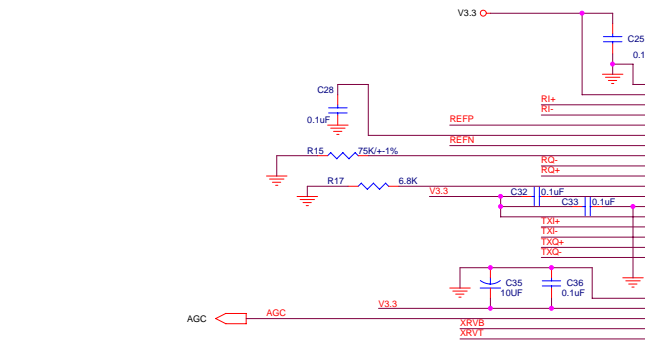
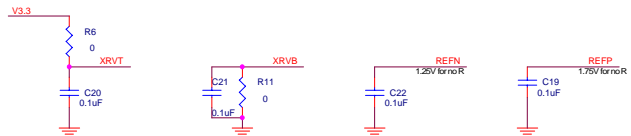
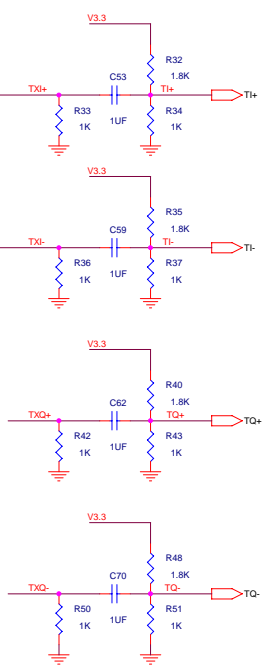


Title		<Title>
Size	Document Number	Rev
Custom	Doc	<Rev Code>
Date:	Tuesday, December 07, 2004	Sheet 1 of 3

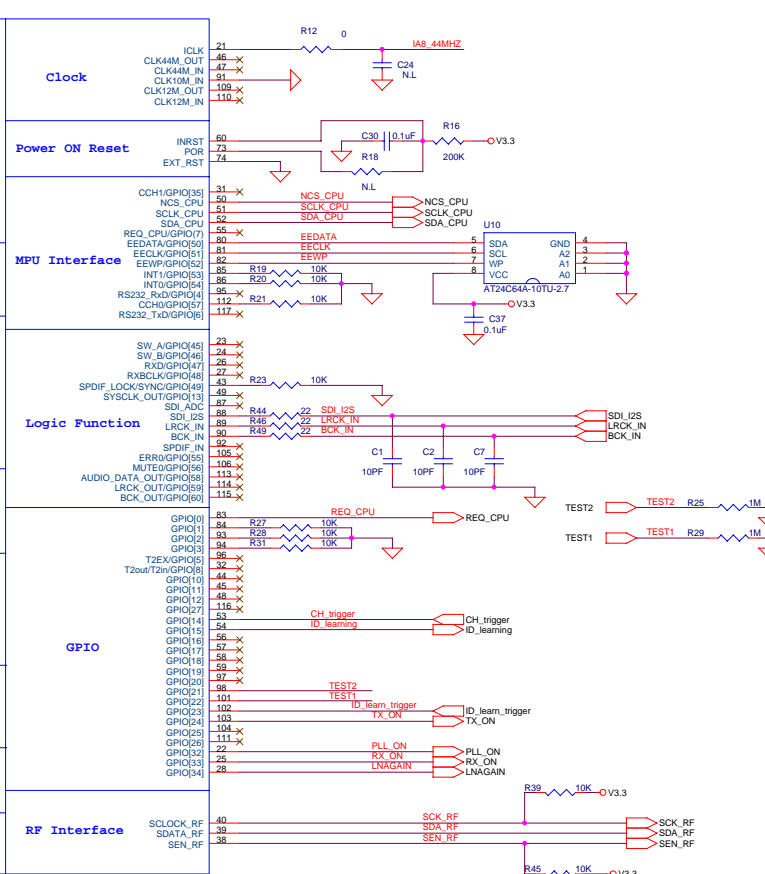


RX IQ SIGNAL

TX IQ SIGNAL

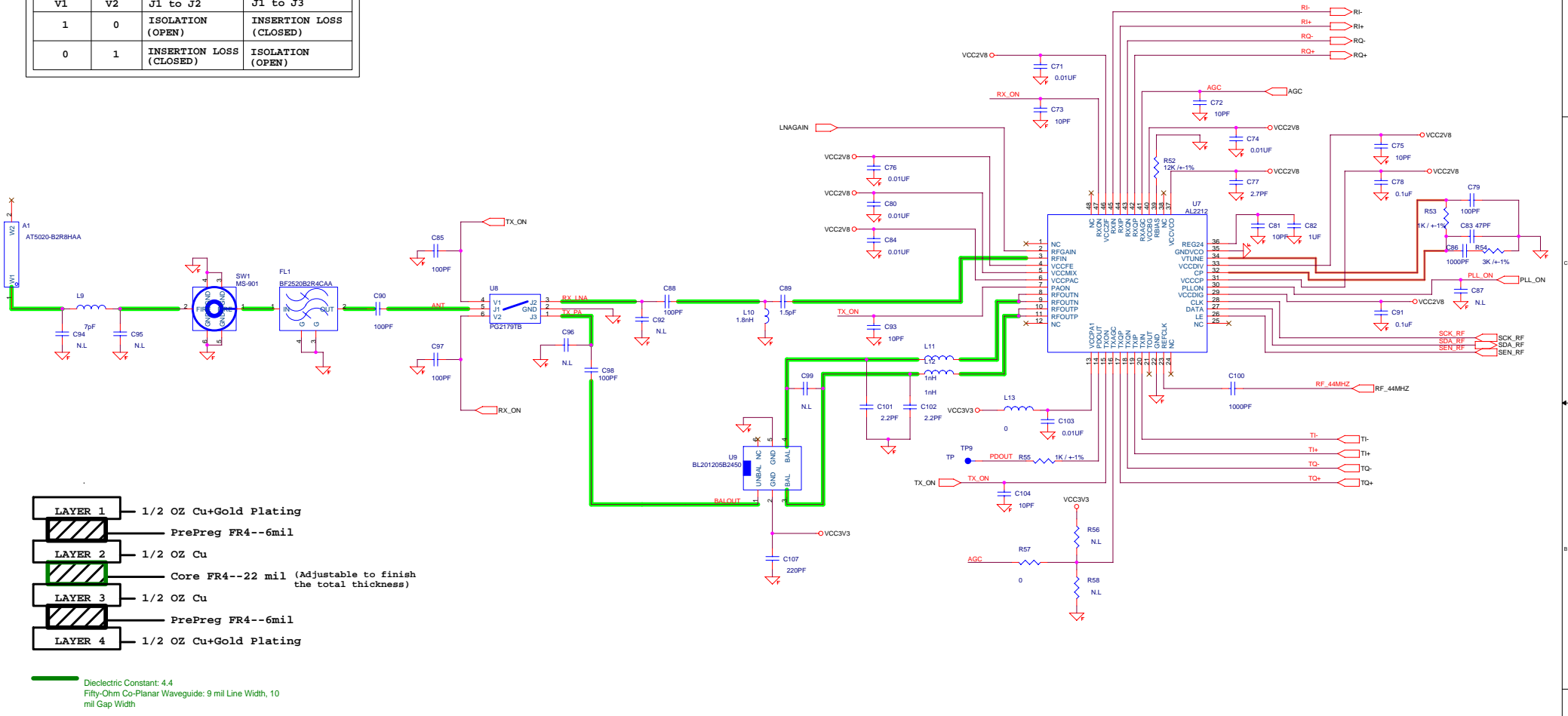


TEST1	TEST1	MODE
0	0	Normal
0	1	ID Disable
1	0	No ID / PN 9
1	1	Reserve



Pin/SW TRUTH TABLE

V1	V2	J1 to J2	J1 to J3
1	0	ISOLATION (OPEN)	INSERTION LOSS (CLOSED)
0	1	INSERTION LOSS (CLOSED)	ISOLATION (OPEN)



- LAYER 1** — 1/2 OZ Cu+Gold Plating
- PrePreg FR4--6mil
- LAYER 2** — 1/2 OZ Cu
- Core FR4--22 mil (Adjustable to finish the total thickness)
- LAYER 3** — 1/2 OZ Cu
- PrePreg FR4--6mil
- LAYER 4** — 1/2 OZ Cu+Gold Plating

Dielectric Constant: 4.4
 Fifty-Ohm Co-Planar Waveguide: 9 mil Line Width, 10 mil Gap Width