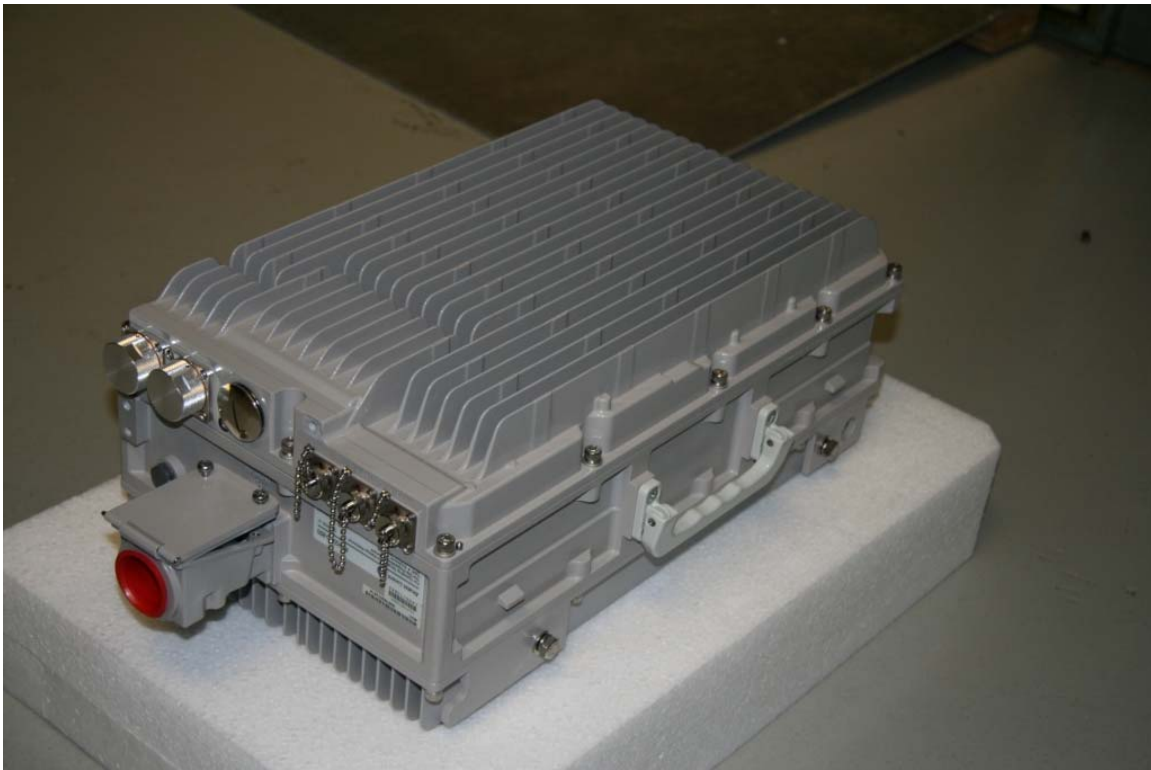


EXHIBIT 3: EXTERNAL PHOTOGRAPHS OF THE EQUIPMENT**Section 2.1033 (c)(12):**

Photographs of the equipment of sufficient clarity to reveal equipment construction and layout, including meters, if any, and labels for controls and meters and sufficient views of the internal construction to define component placement and chassis assembly.

These external photographs show Alcatel-Lucent's -48V WCDMA **RRH2X60-850** twin Remote Radio Head product.

View Number 1:**Front, Bottom and Right Side**

View Number 2:

Top (Tx1/Rx1 + Tx2/Rx2), Front and Left Side



View Number 3:

Bottom

