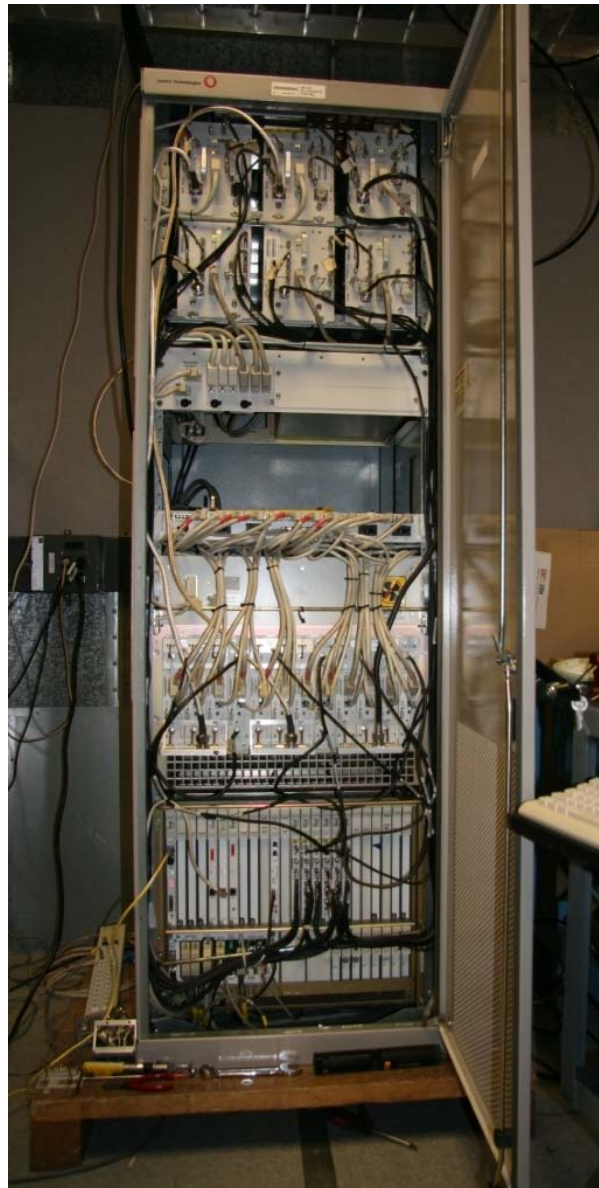


EXHIBIT 4: EXTERNAL PHOTOGRAPHS OF THE EQUIPMENT**Section 2.1033 (c)(12):**

Photographs of the equipment of sufficient clarity to reveal equipment construction and layout, including meters, if any, and labels for controls and meters and sufficient views of the internal construction to define component placement and chassis assembly.

These external photographs show Alcatel-Lucent's **9391 OneBTS Macrocell**, configured to host the **1900MHz High Efficiency RF Power Amplifier (HEPAM)**, which is the subject of this certification.

The 9391 OneBTS Macrocell Under Test (EUT), Front View with Door Open

The 1900MHz High Efficiency RF Power Amplifier (HEPAM) Front and Right Side View



The 1900MHz High Efficiency RF Power Amplifier (HEPAM) Rear and Left Side View

