

**EXHIBIT 7: EXTERNAL PHOTOGRAPHS OF THE EQUIPMENT****Section 2.1033 (c)(12):**

**Photographs of the equipment of sufficient clarity to reveal equipment construction and layout, including meters, if any, and labels for controls and meters and sufficient views of the internal construction to define component placement and chassis assembly.**

The UMTS **9341 RRH 40W 1721MHz** Base Station system, subject of this certification, is comprised of two separate equipment units interconnected by fiber optic cable: **1)** the RF frequency Remote Radio Head (RRH), and **2)** the associated digital Base Band Unit (BBU). They have the flexibility of being installed either in close proximity to (i.e., co-located) or remotely located from each other. The BBU has the capability of controlling up to 3 remotely located RRH units, via fiber optic cable, and incorporates **1)** the 15 MHz reference frequency oscillator module, **2)** digital baseband channel cards, **3)** T1/E1 and alarm interface, and **4)** the RF-to-Optical and Optical-to-RF conversion circuitry. The 40W 1721 MHz RRH incorporates **1)** the Future Technology Radio (FTR1721) transceiver, **2)** the power amplifier (PA) and **3)** the passive tuned cavity filter with single transmit (Tx0) and diversity receive functionality (Rx0, Rx1).

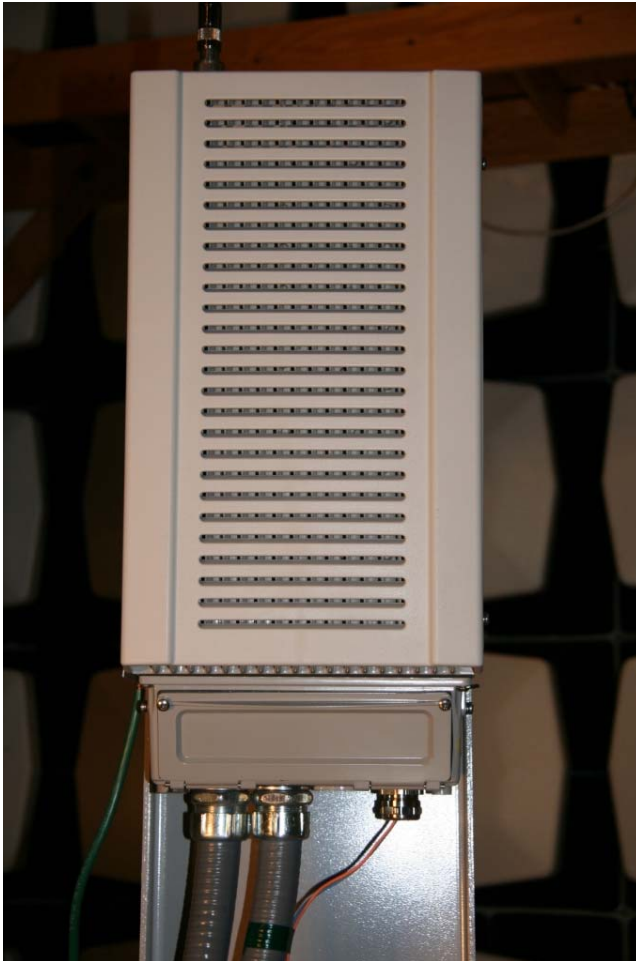
**UMTS 9341 RRH 40W 1721 MHz Remote Radio Head****Front View of Remote Radio Head:**

Exhibit 7

Left Side View of Remote Radio Head:



**Exhibit 7**

**Top, Front and Left Side View:**



**Exhibit 7**

**Associated Digital Base Band Unit (BBU)**

**View of the Outdoor Enclosure Configuration:**

