

EXHIBIT 9**Section 2.1033 (c)(12) PHOTOGRAPHS OF THE EQUIPMENT**

Photographs (8 x 10) of the equipment of sufficient clarity to reveal equipment construction and layout, including meters, if any, and labels for controls and meters and sufficient views of the internal construction to define component placement and chassis assembly. Insofar as these requirements are met by photographs or drawings contained in instruction manuals supplied with the certification request, additional photographs are necessary only to complete the required showing.

Response

The RF path of the AWS base station consists of two critical RF active components: AWS MCR transceiver and 60W-IPAM power amplifier.

The following pages contain the required photographs of the AS5ONEBTS-16 AWS base station, subject of this application, showing the circuit boards of the MCR-1721B transceiver and 60W-IPAMs power amplifiers.

Twelve photos in total were submitted, which include:

- 1) Front and Rear Views of the MCR-1721B RF Transceiver,
- 2) Circuit Board Component Side View of the MCR-1721B RF Transceiver,
- 3) Circuit Board Wiring Side View of the MCR-1721B RF Transceiver,
- 4) Circuit Board Component Side View of the MCR-1721B RF Transceiver with Shielding Cover Removed,
- 5) Front and Rear Views of the RF Power Amplifier 60W-IPAM,
- 6) Left Side and Right Side Views of the RF Power Amplifier 60W-IPAM,
- 7) Circuit Board Component Side View of RF Power Amplifier 60W-IPAM from Vendor #1 with Cover Removed,
- 8) Circuit Board Component Side View of RF Power Amplifier 60W-IPAM from Vendor #1 with Shielding Cover Removed,
- 9) Back Side View of RF Power Amplifier 60W-IPAM from Vendor #1 with Cover Removed,
- 10) Circuit Board Component Side View of RF Power Amplifier 60W-IPAM from Vendor #2 with Shielding Cover Removed,
- 11) Back Side View of RF Power Amplifier 60W-IPAM from Vendor #2 with Cover Removed,
- 12) Front View of the AWS Modular Cell 4.0B Indoor.



AS50NEBTS-16 MCR
RF Transceiver Front and
Rear View

23 cm

2 cm

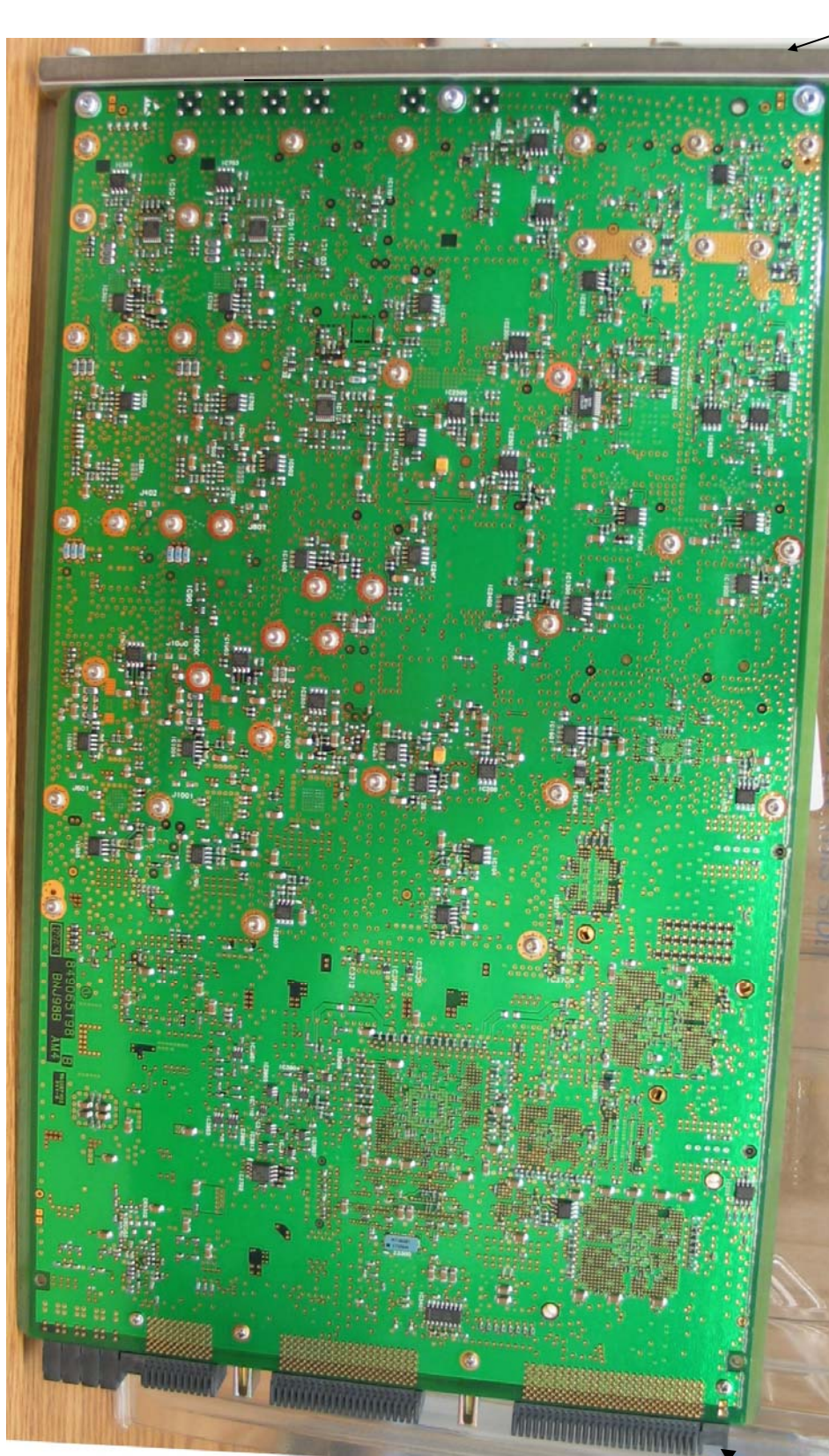


Front:
Faceplate



AS5ONEBTS-16
MCR Transceiver
Circuit Board
Component Side View

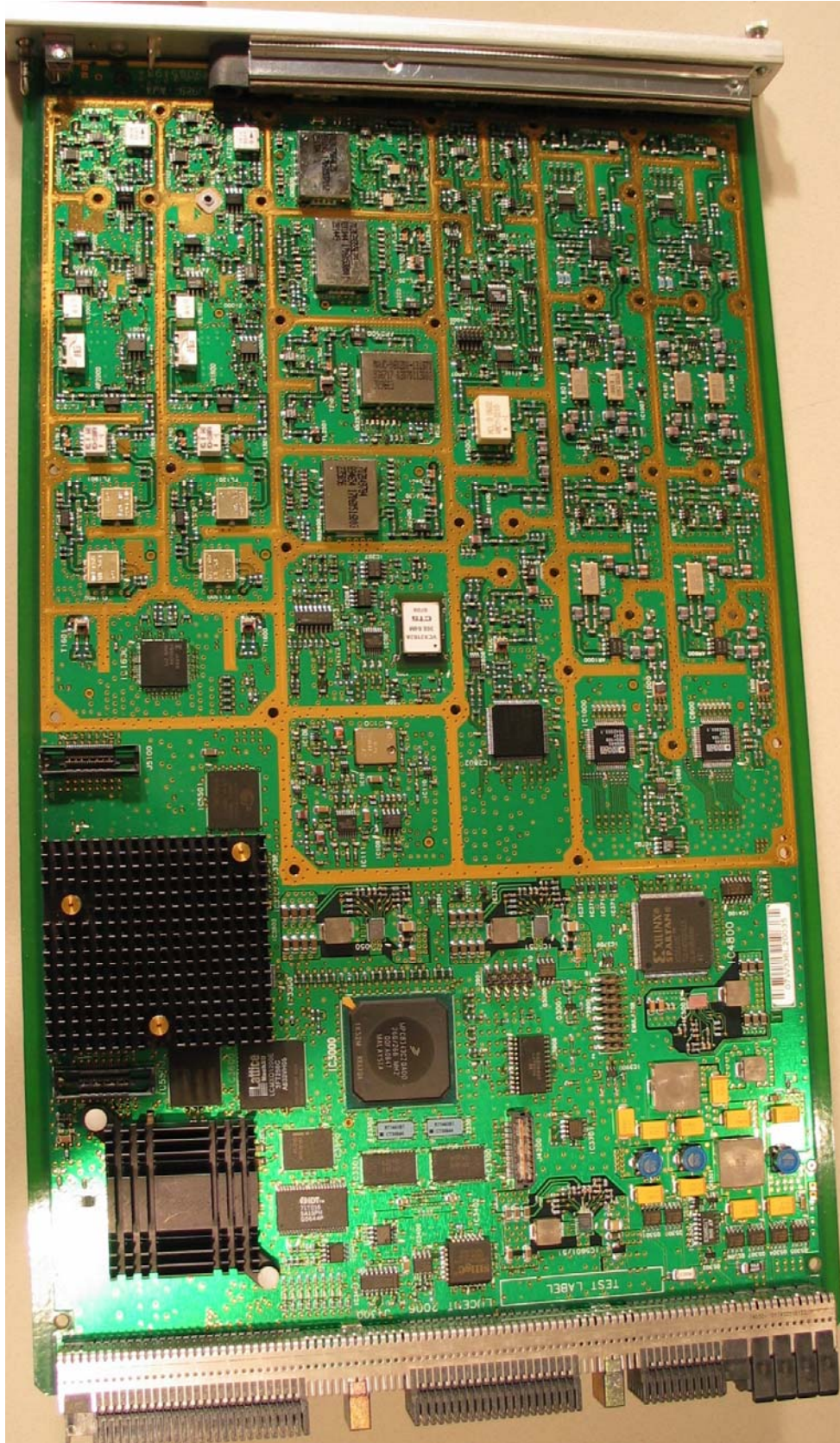
Rear



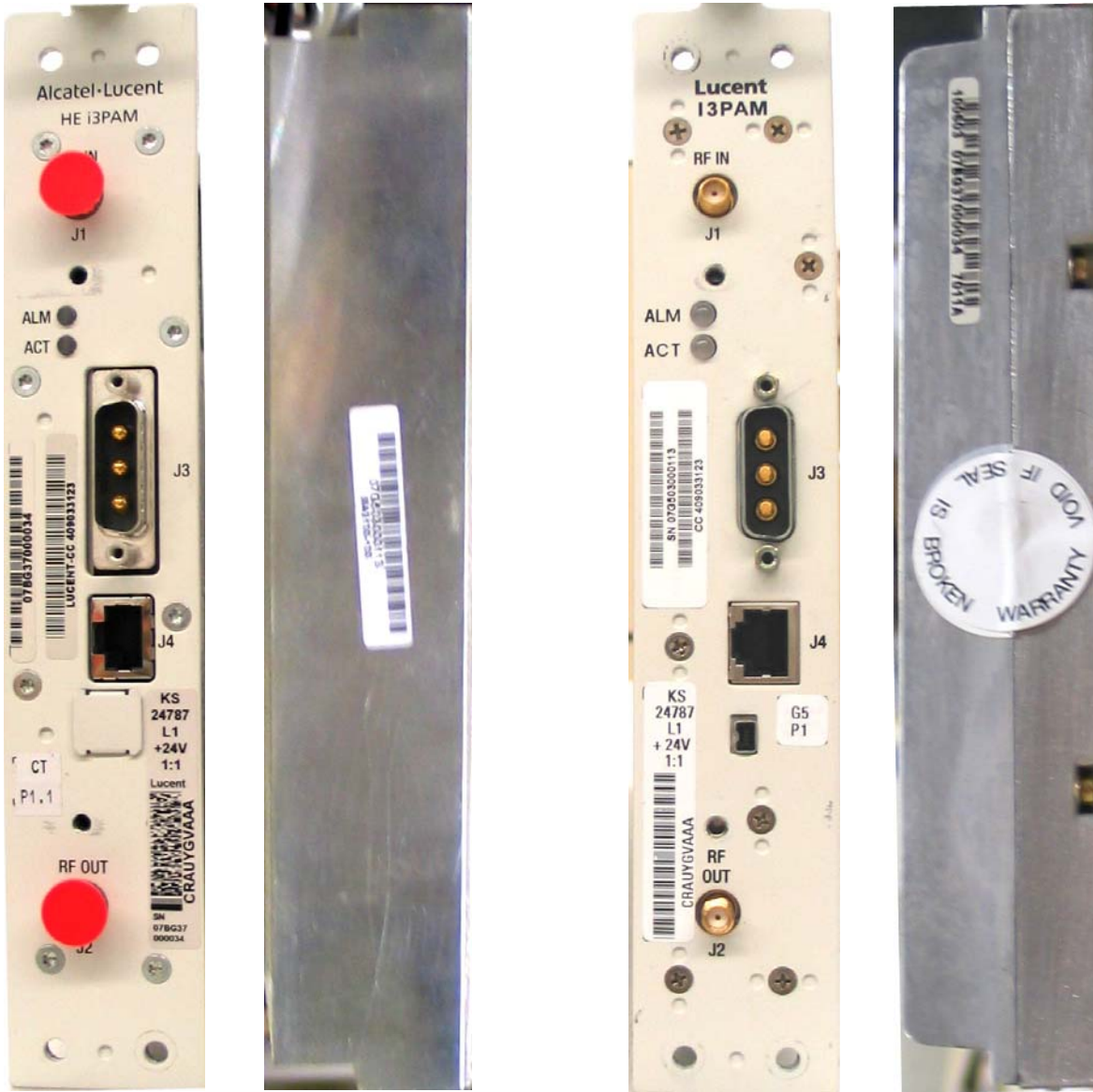
Front

AS5ONEBTS-16
MCR Transceiver
Circuit Board
Wiring Side View

Rear

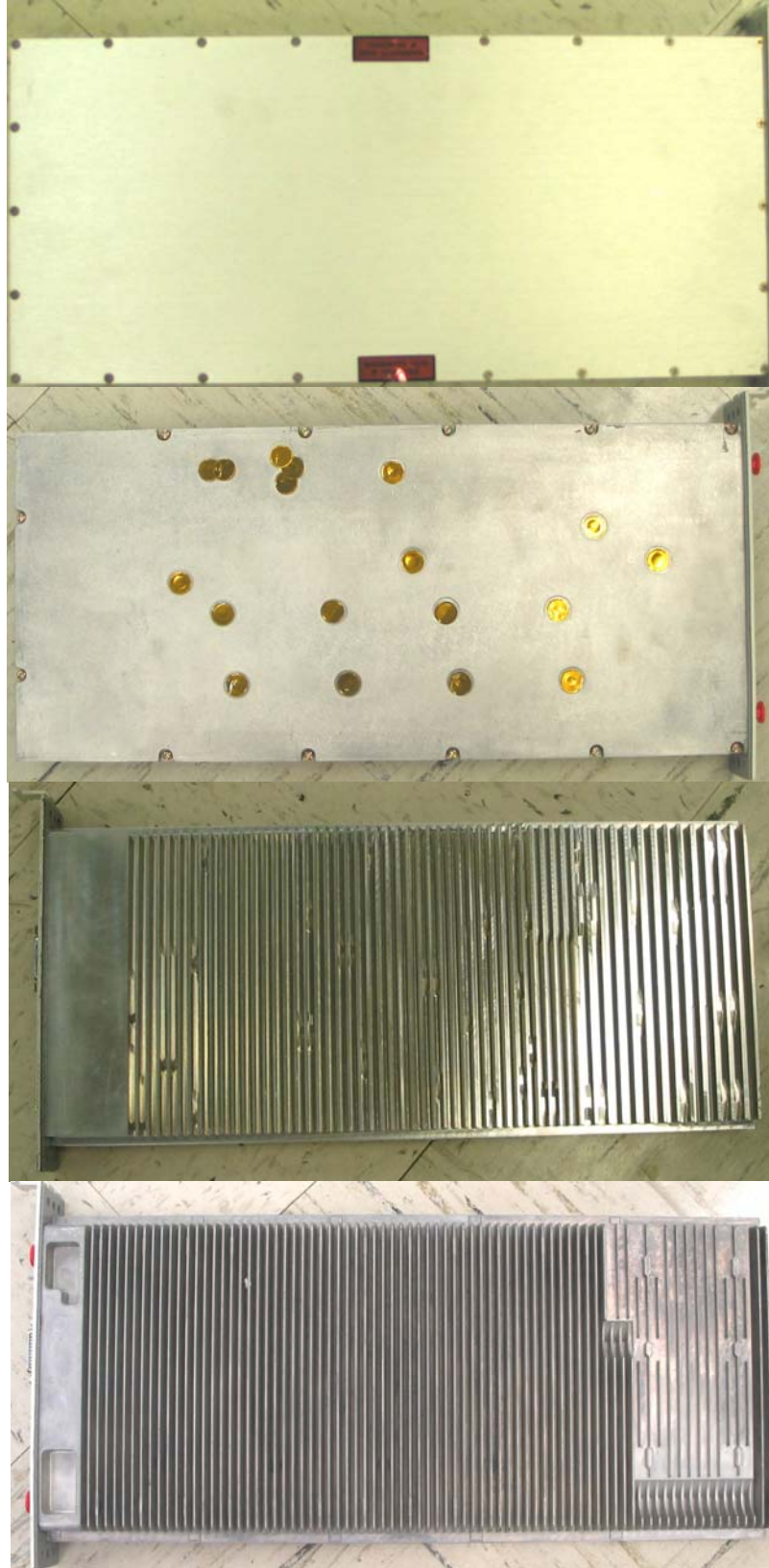


AS50NEBT
S-16 MCR
Transceiver
Circuit Board
Component
Side View
With
Shielding
Cover
Removed



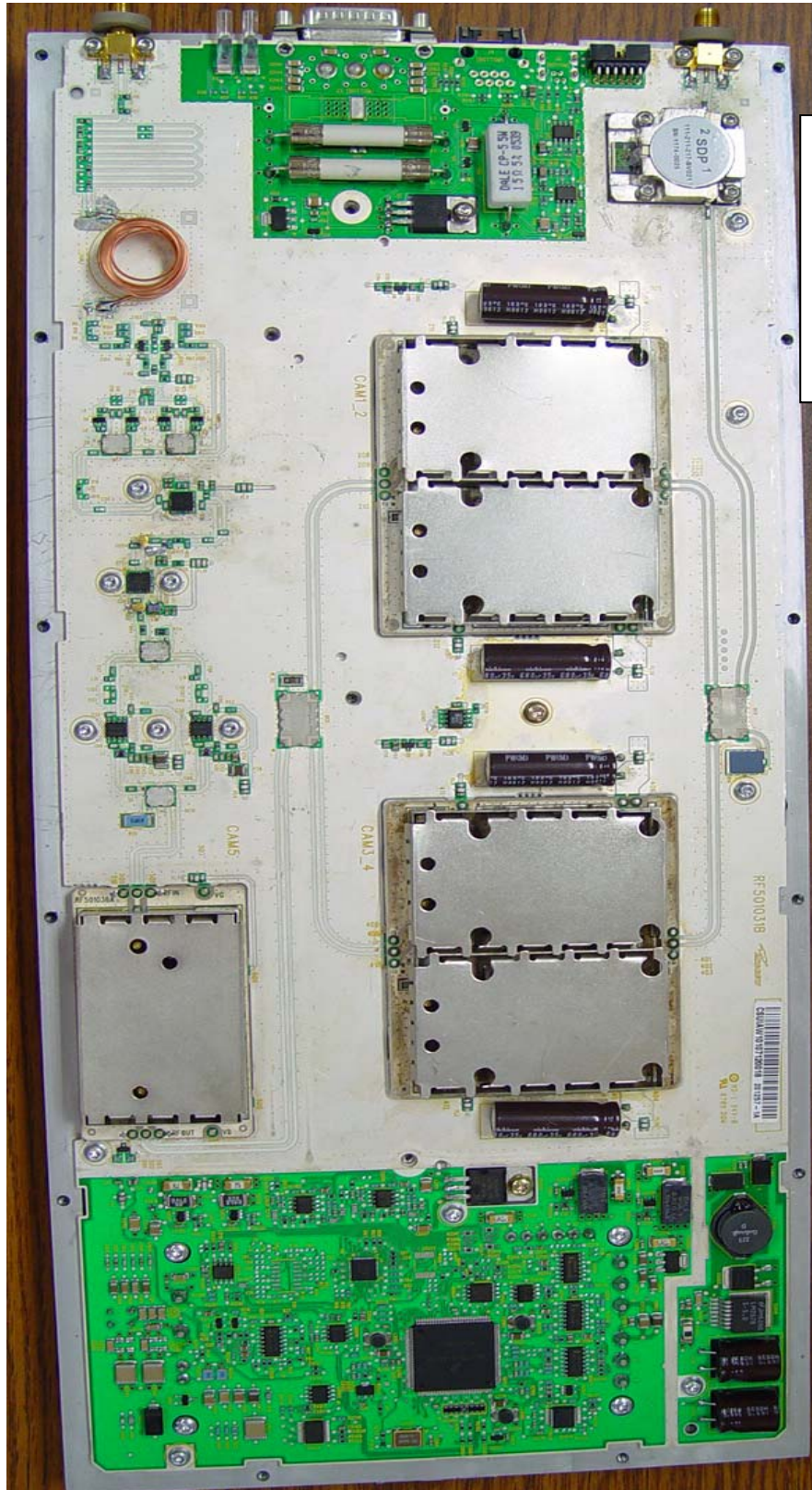
4cm x 21.7cm

AS5ONEBTS-16
60W-IPAM Front
and Back Views
(two vendors)

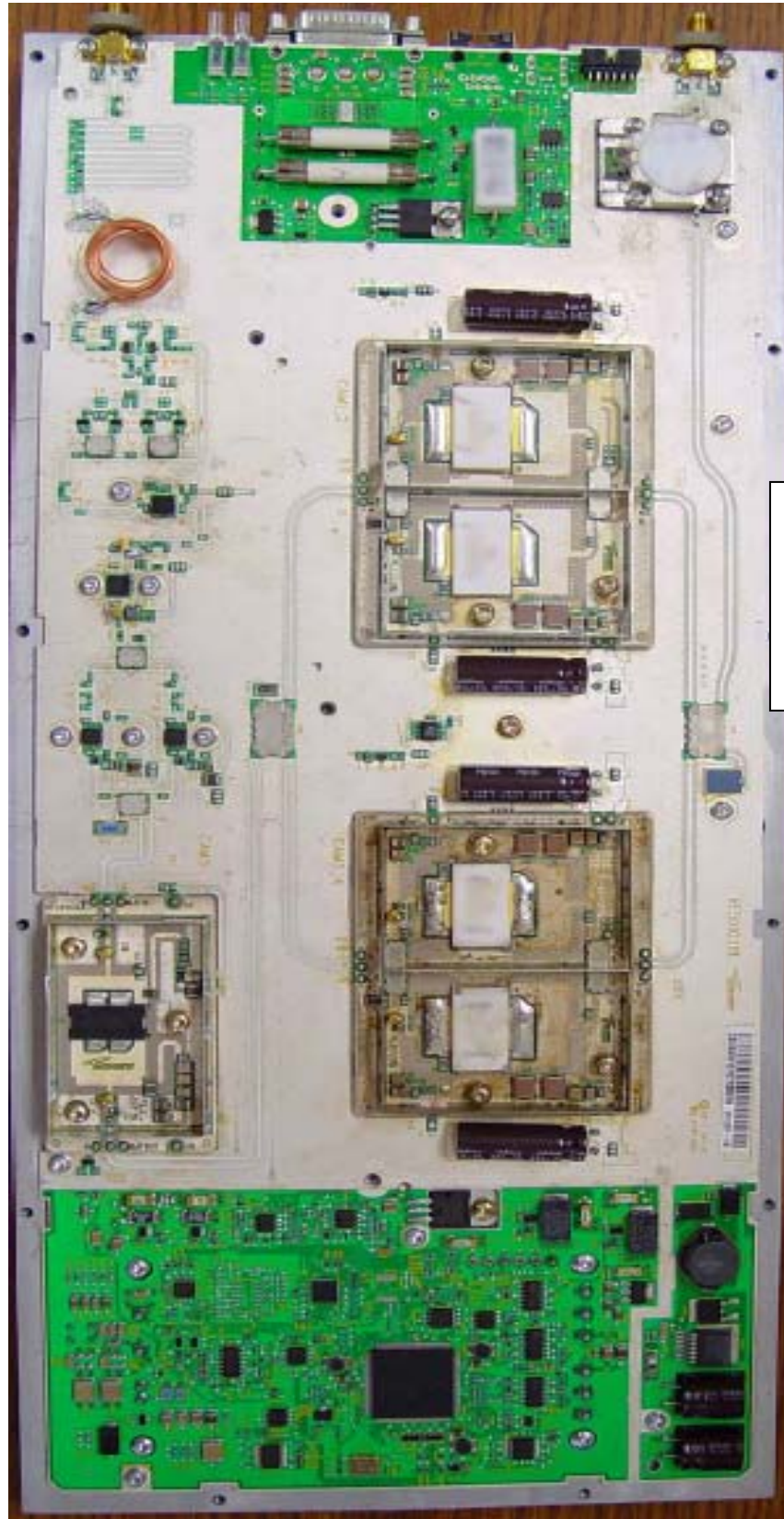


AS5ONEBTS
-16 60W-
IPAM Left
View (two
vendors)

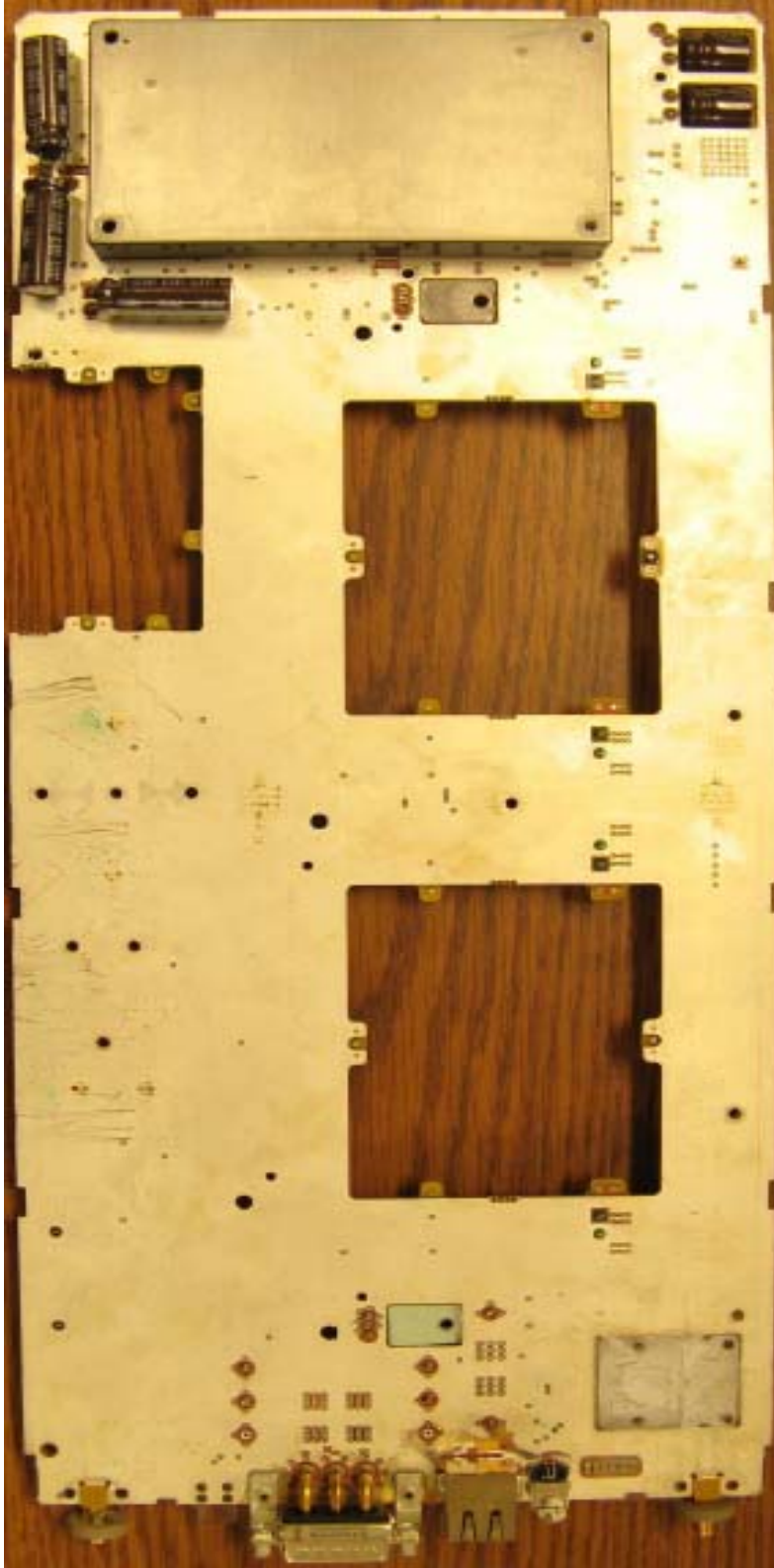
AS5ONEBTS-
16 60W-IPAM
Right View
(two vendors)



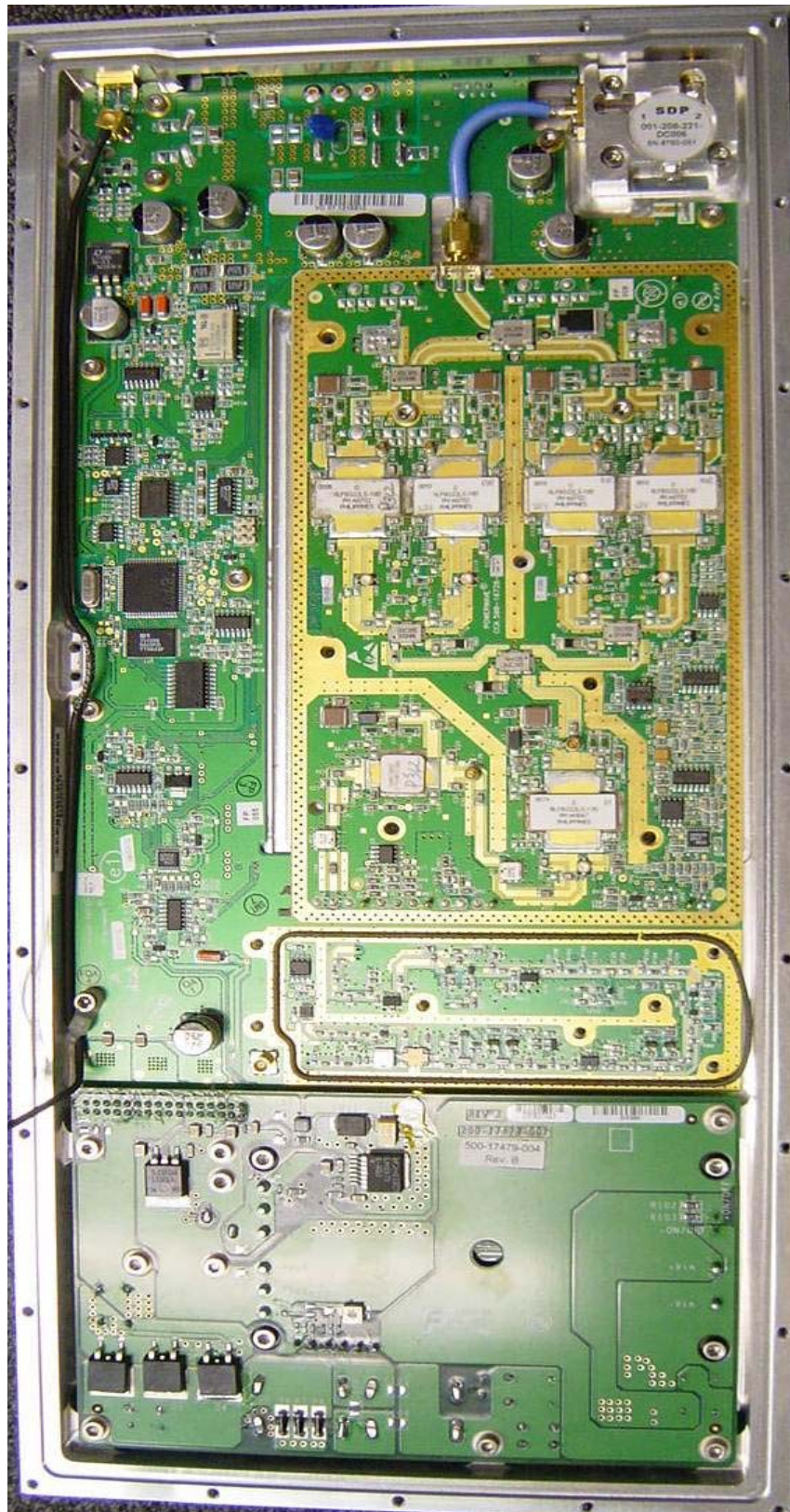
AS50NEBTS-16 60W-IPAM Component Side View with Cover Removed (Vendor 1)



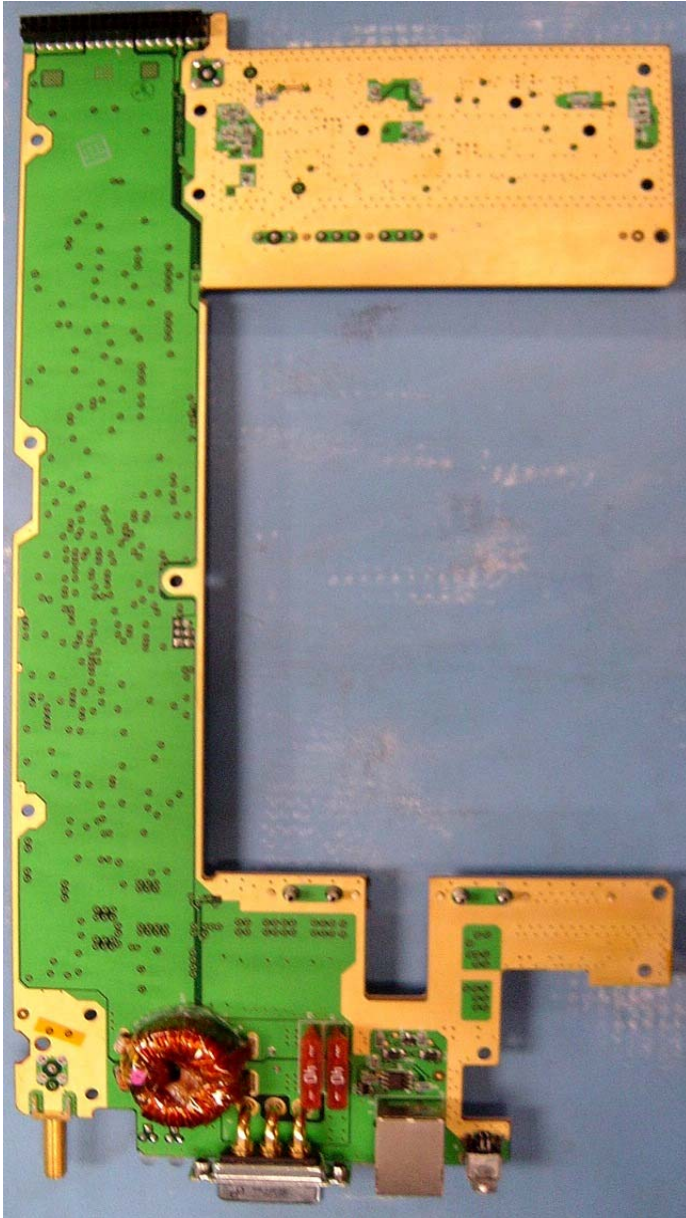
AS50NEBTS-16
60W-IPAM
Component Side
View with
Shielding Covers
Removed
(Vendor 1)



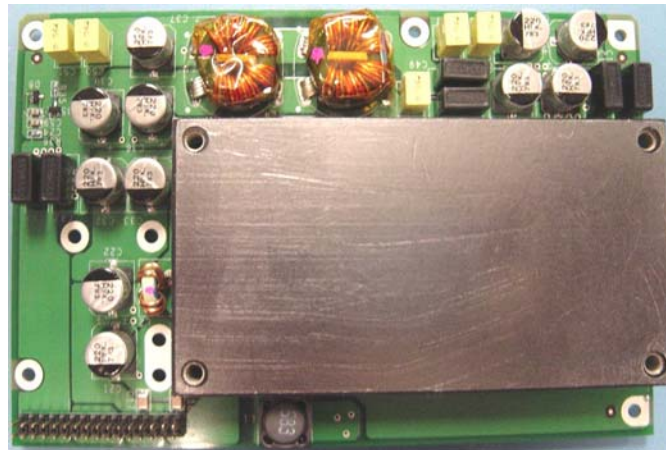
AS5ONEBTS
-16 60W-
IPAM Back
Side View
with Cover
Removed
(Vendor 1)

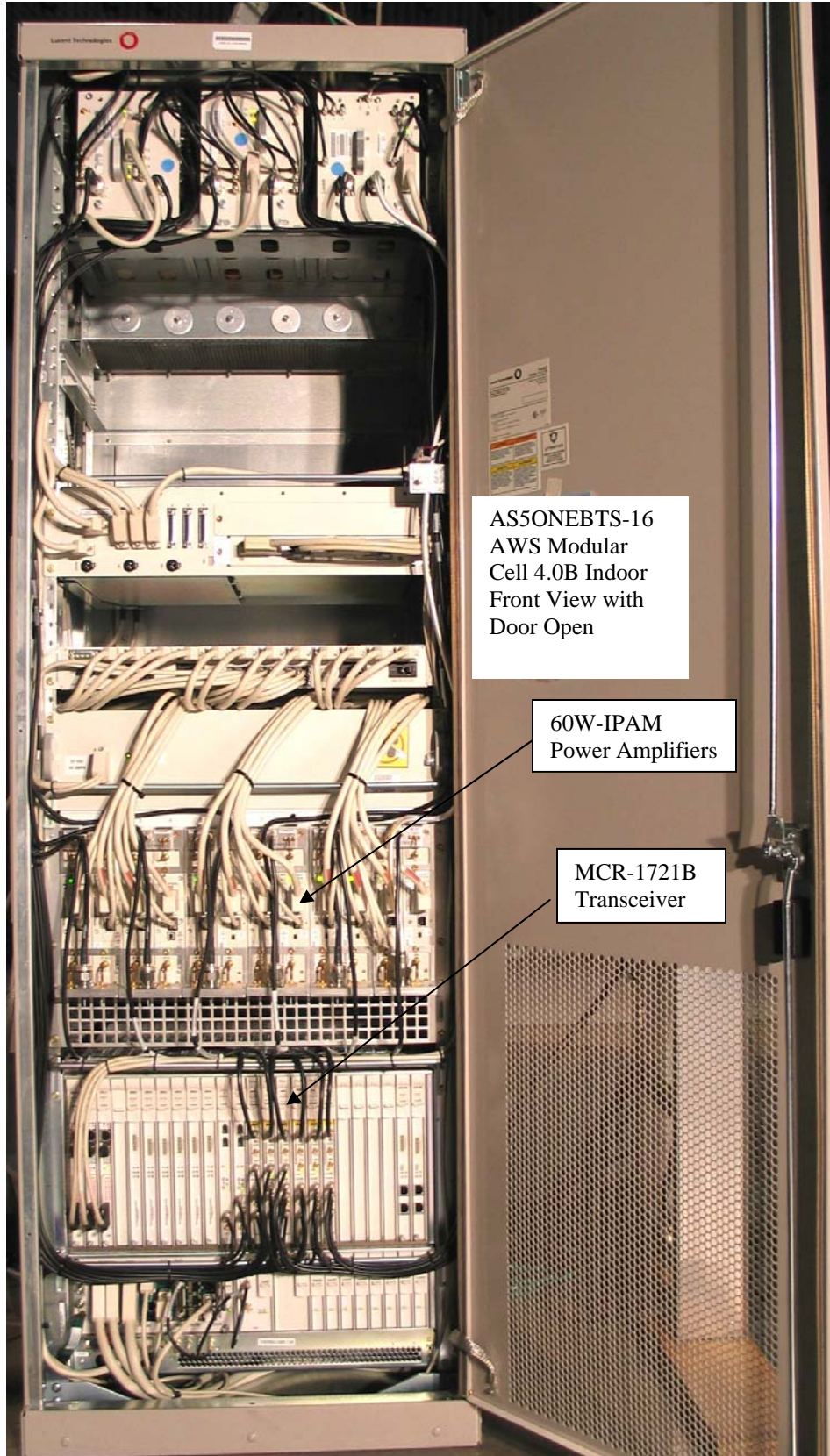


AS5ONEBTS-16 60W-IPAM Component Side View with Shielding Cover Removed (Vendor 2)



AS50NEBTS-16 60W-IPAM
Back Side View
with Cover
Removed
(Vendor 2)





AS5ONEBTS-16
AWS Modular
Cell 4.0B Indoor
Front View with
Door Open

60W-IPAM
Power Amplifiers

MCR-1721B
Transceiver