

## **EXHIBIT 9            PHOTOGRAPHS OF THE EQUIPMENT**

### **Section 2.1033 (c)(12)    PHOTOGRAPHS OF THE EQUIPMENT**

Photographs (8 x 10) of the equipment of sufficient clarity to reveal equipment construction and layout, including meters, if any, and labels for controls and meters and sufficient views of the internal construction to define component placement and chassis assembly. Insofar as these requirements are met by photographs or drawings contained in instruction manuals supplied with the certification request, additional photographs are necessary only to complete the required showing.

#### **Response**

The RF path of the AWS base station consists of two critical RF active components: AWS MCR transceiver and 60W-IPAM power amplifier.

The following pages contain the required photographs of the AS5ONEBTS-16 AWS base station, subject of this application, showing the circuit boards of the MCR-1721B transceiver and 60W-IPAMs power amplifiers.

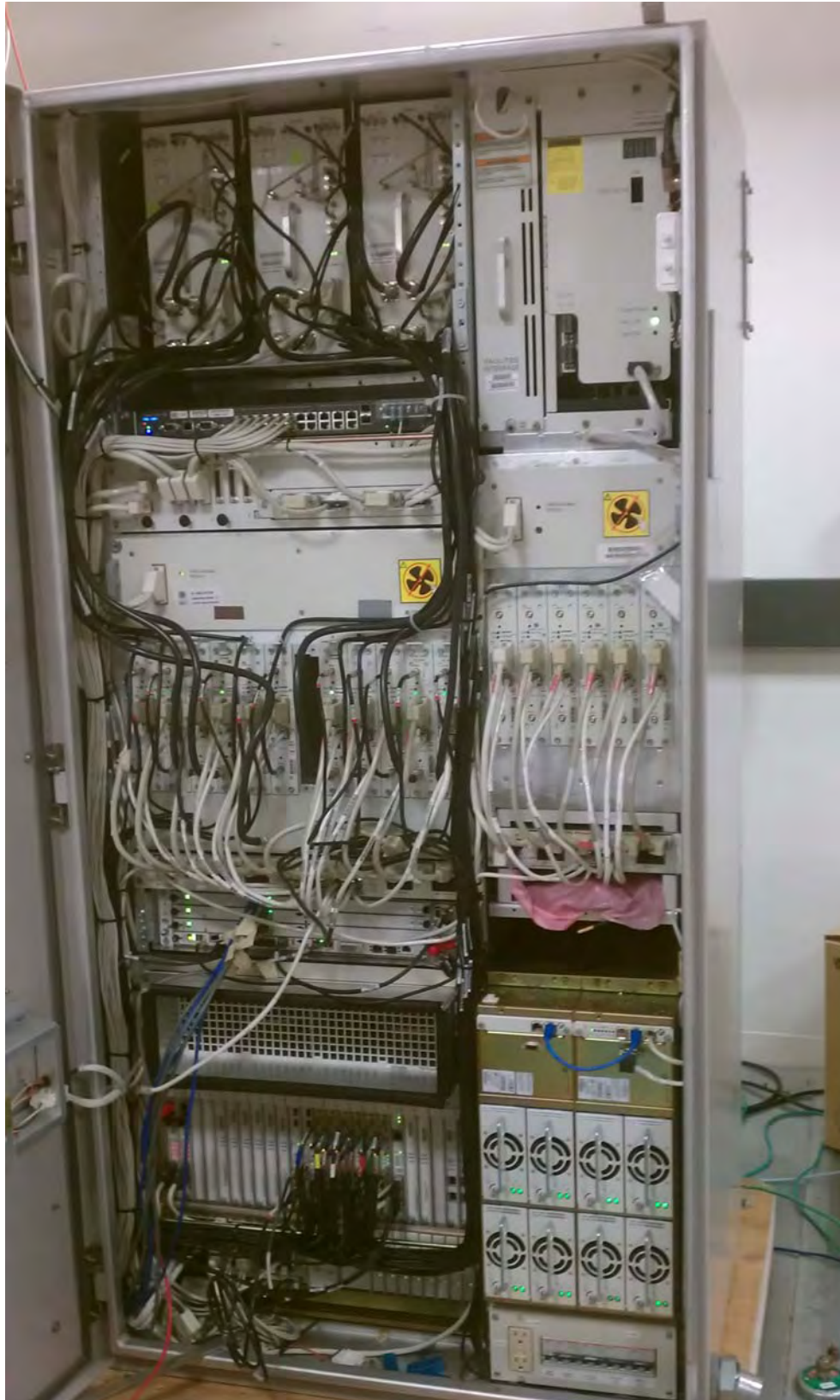
Twelve photos in total were submitted in the original filing, which included:

- 1) Front and Rear Views of the MCR-1721B RF Transceiver,
- 2) Circuit Board Component Side View of the MCR-1721B RF Transceiver,
- 3) Circuit Board Wiring Side View of the MCR-1721B RF Transceiver,
- 4) Circuit Board Component Side View of the MCR-1721B RF Transceiver with Shielding Cover Removed,
- 5) Front and Rear Views of the RF Power Amplifier 60W-IPAM,
- 6) Left Side and Right Side Views of the RF Power Amplifier 60W-IPAM,
- 7) Circuit Board Component Side View of RF Power Amplifier 60W-IPAM from Vendor #1 with Cover Removed,
- 8) Circuit Board Component Side View of RF Power Amplifier 60W-IPAM from Vendor #1 with Shielding Cover Removed,
- 9) Back Side View of RF Power Amplifier 60W-IPAM from Vendor #1 with Cover Removed,
- 10) Circuit Board Component Side View of RF Power Amplifier 60W-IPAM from Vendor #2 with Shielding Cover Removed,
- 11) Back Side View of RF Power Amplifier 60W-IPAM from Vendor #2 with Cover Removed,

#### **The new photo included in this Class II Change is:**

- 12) Front View of the AWS LTE 9228 Macro / 4.0B Modular Cell Outdoor.

**Front View Alcatel-Lucent 9228 Macro Outdoor AWS-PCS LTE-CDMA-EDPD Base Station**



**Alcatel-Lucent. - Proprietary**  
Use pursuant to Company Instructions.