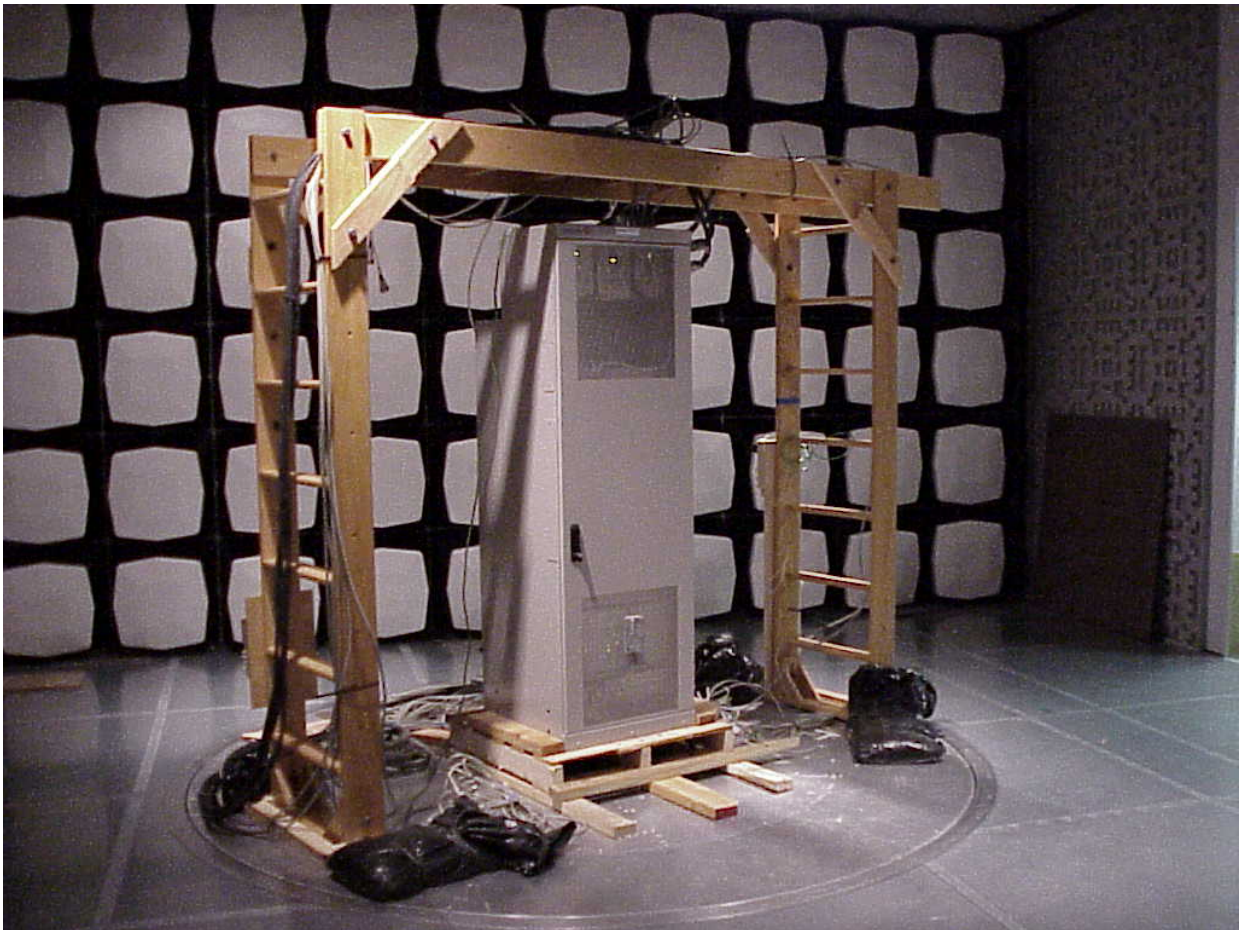


**EXHIBIT 4: EXTERNAL PHOTOGRAPHS**

Lucent UMTS Flexent® OneBTS™ 850 MHz Wireless Base Station, incorporating the UMTS-CDMA Multi-Carrier CDMA Radio (MCR850), BNJ65; the C2PAM power amplifier, and the 25 MHz wideband, low loss, Dual Duplex (DDpx) bandpass filters configured for 3S1C operation at 40 Watts/Carrier is shown in the following photographs.

**View: UMTS850 Macrocell Equipment Frame Front and Left Side View.**



**EXHIBIT 4: EXTERNAL PHOTOGRAPHS**

**View: UMTS850 Macrocell Equipment Frame Rear and Right Side View.**



EXHIBIT 4: EXTERNAL PHOTOGRAPHS

View: UMTS850 Macrocell Equipment Frame Front View with Door Open

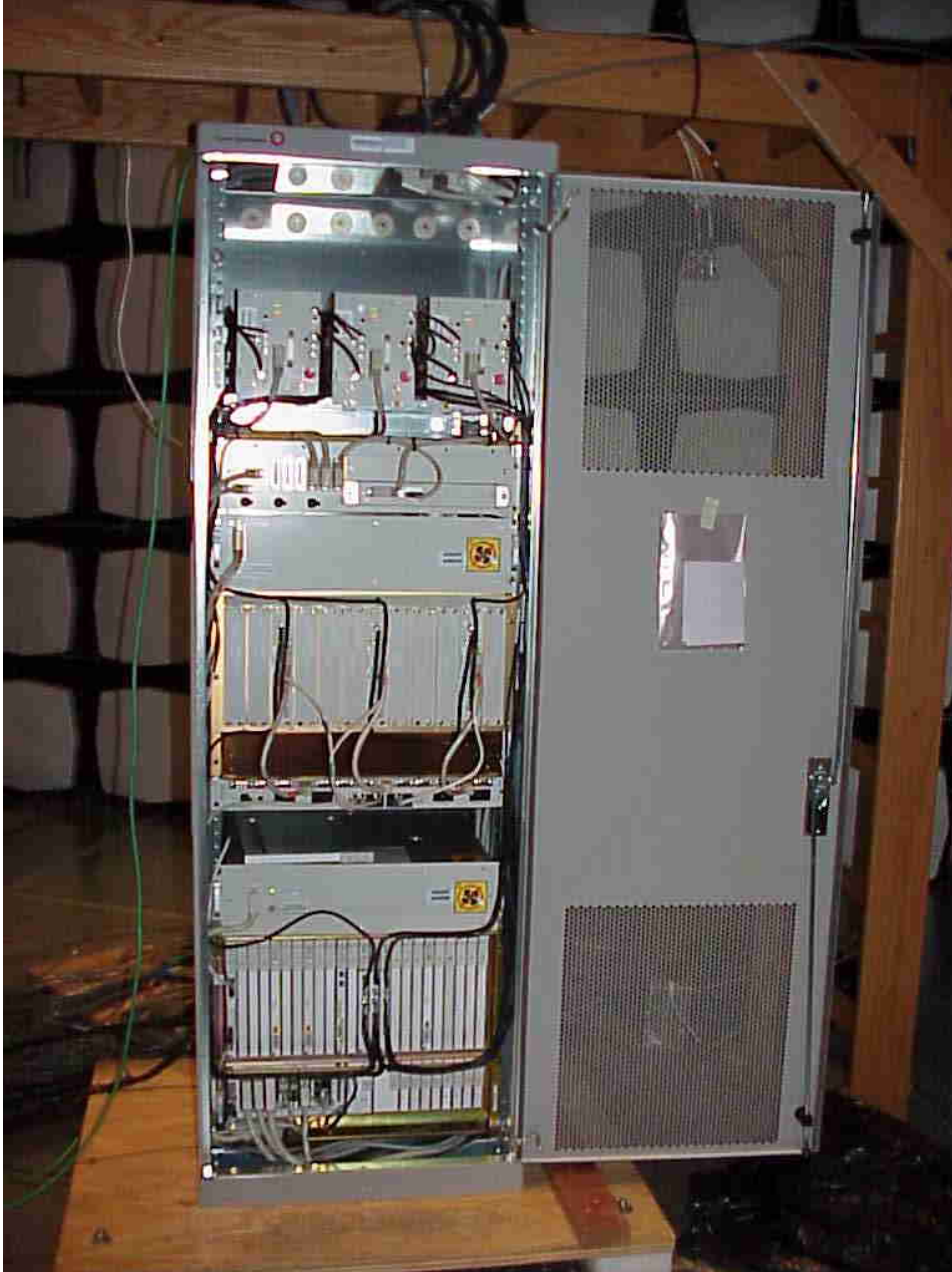




EXHIBIT 4: EXTERNAL PHOTOGRAPHS

View: UMTS850 Macrocell Equipment Frame Front View Closeup, Showing the Digital Shelves with Multi-Carrier CDMA Radio (MCR850), BNJ65, and the Crystal Oscillator Module (OMA).

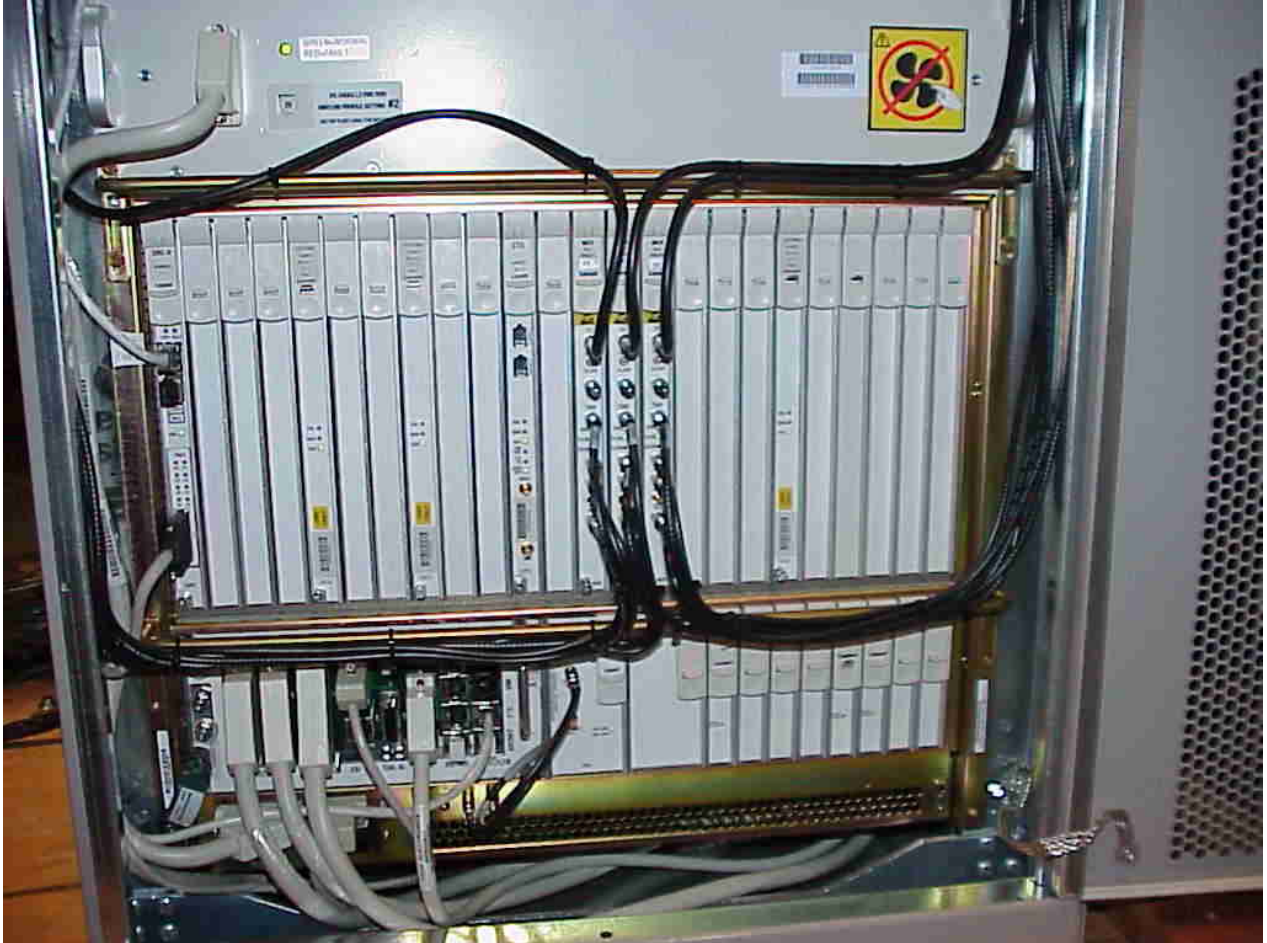


EXHIBIT 4: EXTERNAL PHOTOGRAPHS

View: UMTS850 Macrocell Equipment Frame Front View Closeup, Showing the Power Amplifier Shelf .

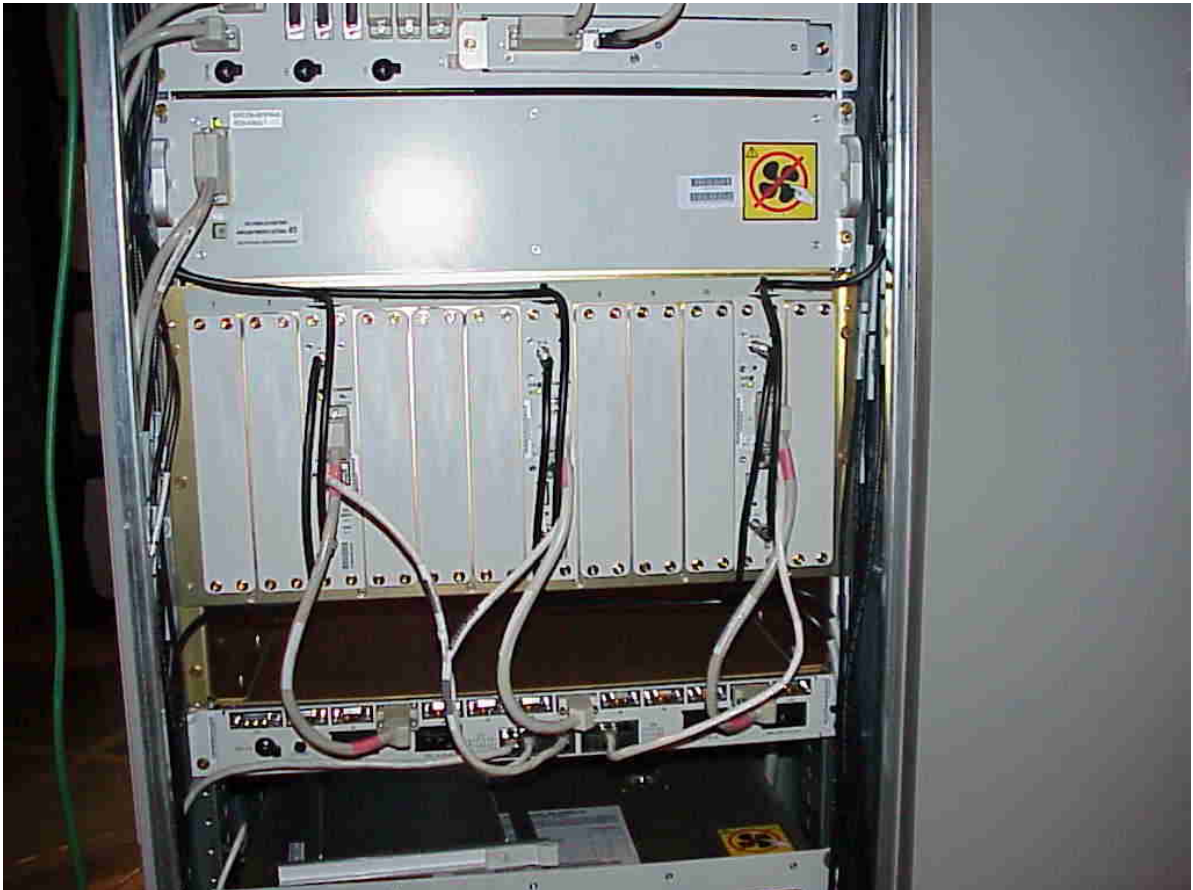


EXHIBIT 4: EXTERNAL PHOTOGRAPHS

View: UMTS850 Macrocell Equipment Frame Front View Closeup, Showing the 25 MHz Dual Duplex Filter Shelf .

