

EXHIBIT 5: TEST SET UP PHOTOGRAPHS

The photographs in this exhibit show the test equipment configuration for each test performed.

Alcatel-Lucent UMTS Dual Band Macrocell (1900 MHz + 850 MHz) Wireless Base Station, incorporating the UMTS-CDMA Multi-Carrier CDMA Radio (MCR850), BNJ65; the C2PAM power amplifier; and the 25 MHz wideband, low loss, Dual Duplex (DDpx) bandpass filters covering the Cellular Frequency Spectrum 869-894 MHz.

TEST: **Measurement of RF Power Output**
 Measurement of Modulation Characteristics
 Measurement of Occupied Bandwidth
 Measurement of Spurious Emissions at the Antenna Terminals

View: **UMTS Equipment Frame Front View, Showing Test Configuration for Measuring Emissions and RF Characteristics Conducted to the Antenna Terminal .**

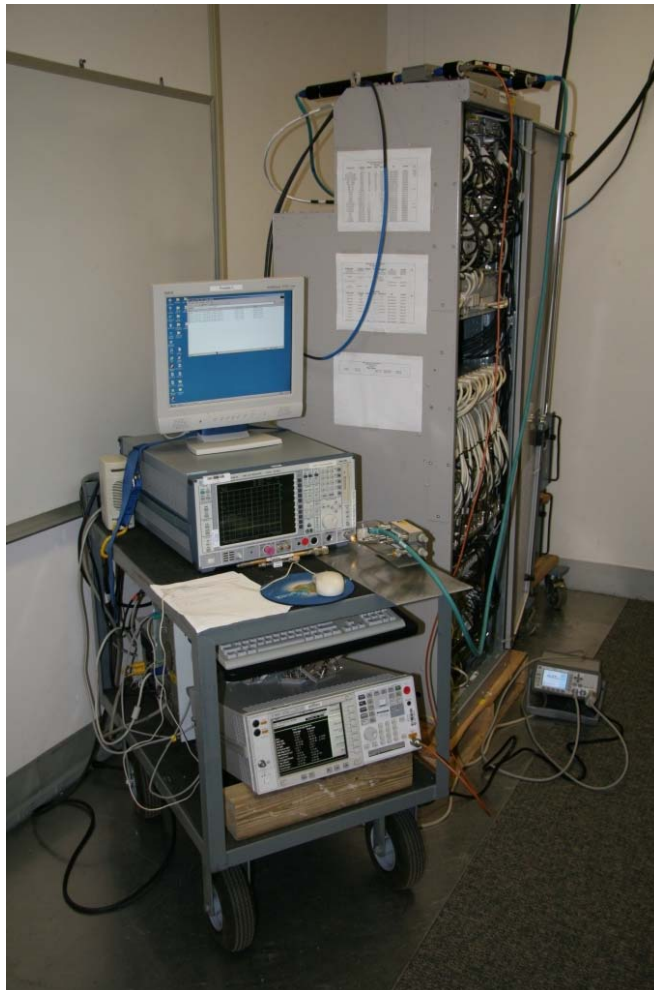


EXHIBIT 5: TEST SET UP PHOTOGRAPHS

TEST: Measurement of Radiated Spurious Emissions

View: UMTS Equipment Frame Front View, Showing Test Configuration in a Whippany Semi-Anechoic Chamber.

