

## EXHIBIT 9: EXTERNAL and INTERNAL PHOTOGRAPHS

### SECTION 2.1033 (c) (12)

Photographs (8"x10") of the equipment of sufficient clarity to reveal equipment construction and layout, including meters, if any, and labels for controls and meters and sufficient views of the internal construction to define component placement and chassis assembly. Insofar as these requirements are met by photographs or drawings contained in the instruction manuals supplied with the product certification request, additional photographs are necessary only to complete the required showing.

### Response:

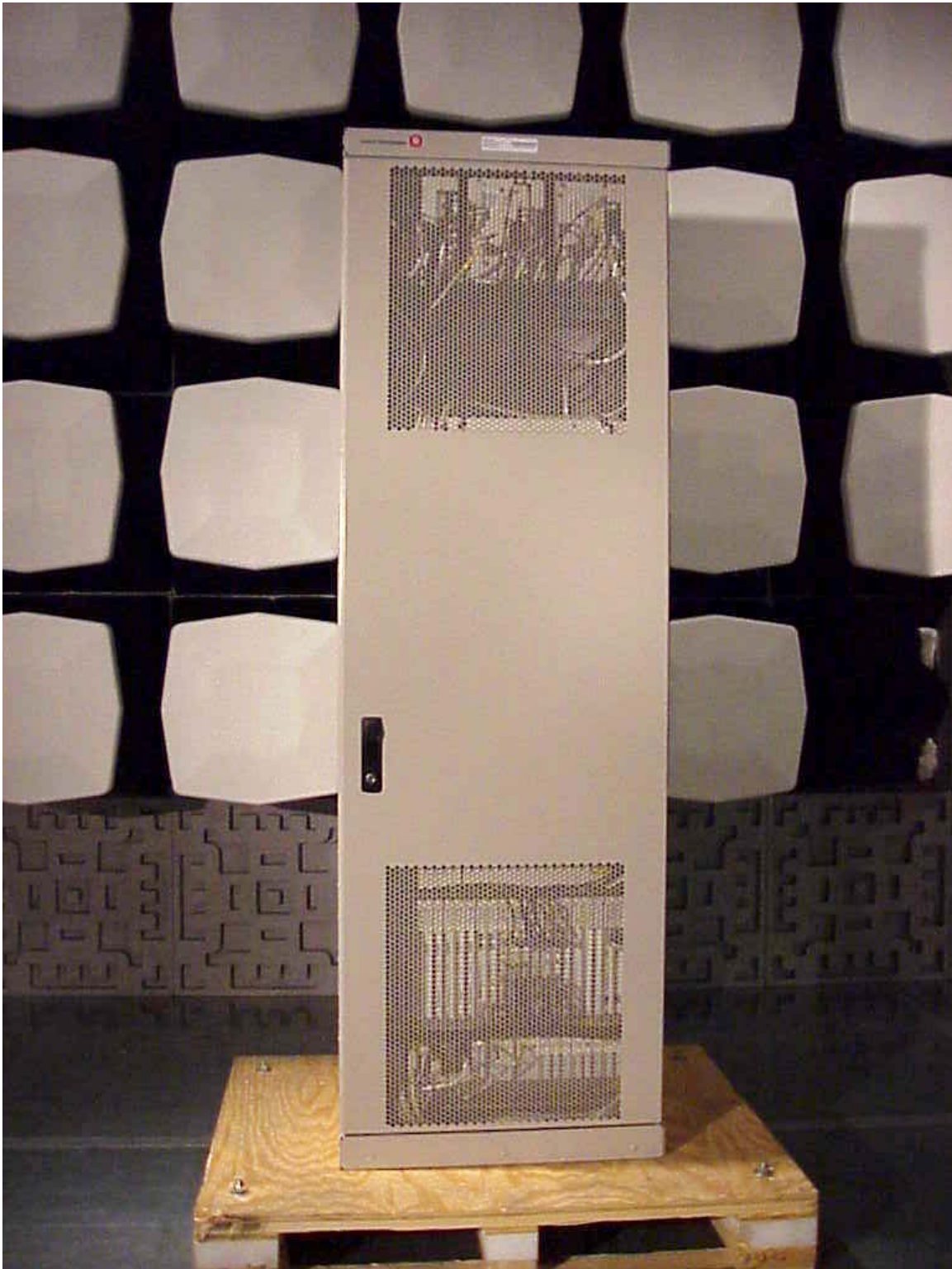
Attached below are digital internal and external photographs of the Lucent Technologies' **FLEXENT® Broadband PCS UMTS-CDMA Transceiver System (1900)** as installed in the **FLEXENT OneBTS 4.0 PCS CDMA Indoor Modular Cell**. Internal and external photographs of the **MCR-1900 / FCC ID: AS5ONEBTS-09** showing the construction and layout of the MCR were provided in the initial filing under **FCC ID: AS5ONEBTS-09** and have not changed.

Lucent Flexent OneBTS PCS CDMA Modular Cell 4.0 incorporating the Lucent Technologies' **FLEXENT® Broadband PCS UMTS-CDMA Transceiver System (1900)** is fundamentally comprised of PCS Multi-Carrier Radios (MCR1900), BNJ64, the P2PAM power amplifiers, and low loss, Dual Duplex (DDpx) bandpass transmit filters

**Exhibit 9** *continued*

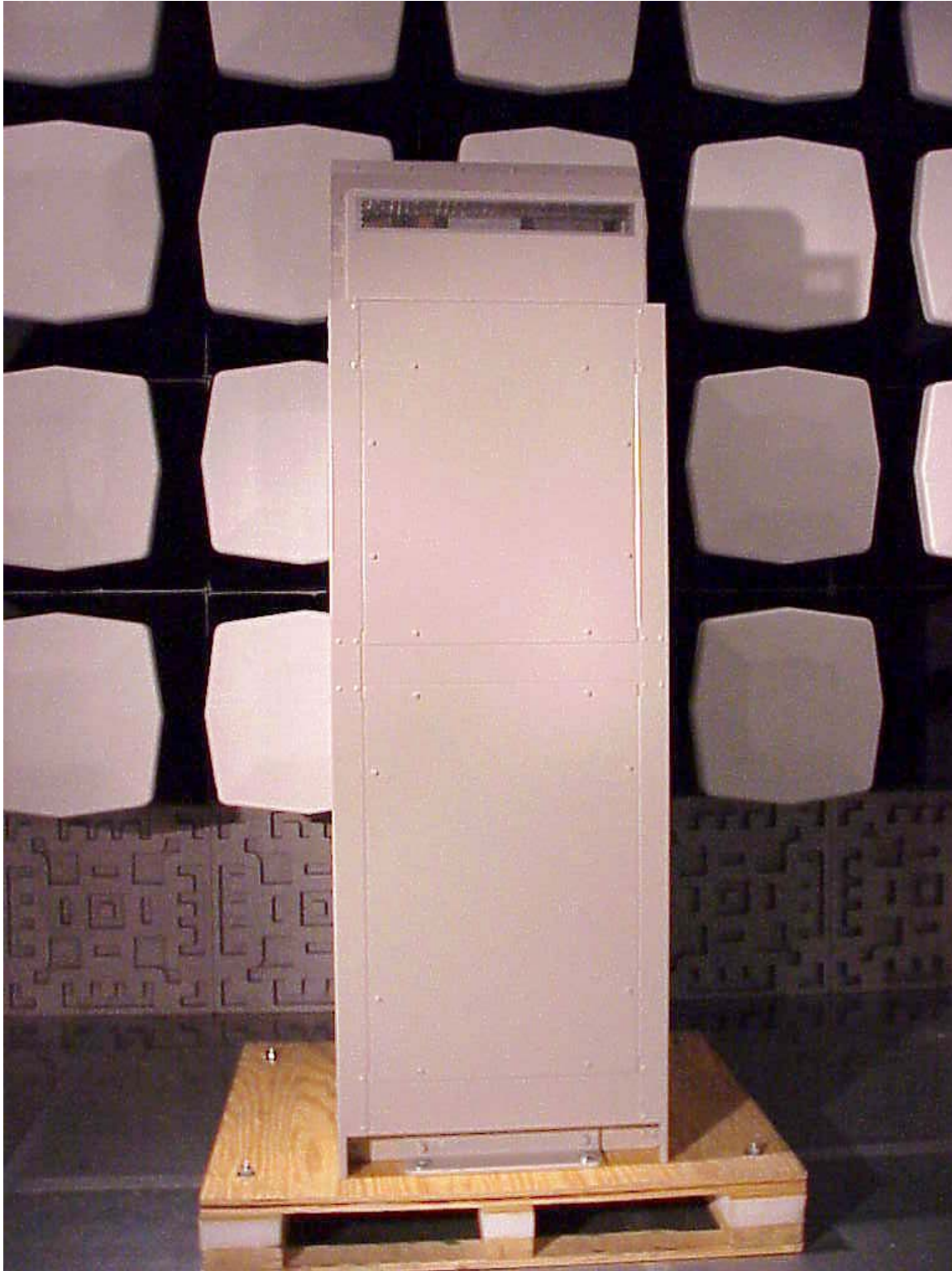
**External Photographs of Lucent Flexent OneBTS PCS CDMA Modular Cell 4.0**

**View: Lucent Flexent OneBTS PCS CDMA Modular Cell 4.0- Front View**



**Exhibit 9** *continued*

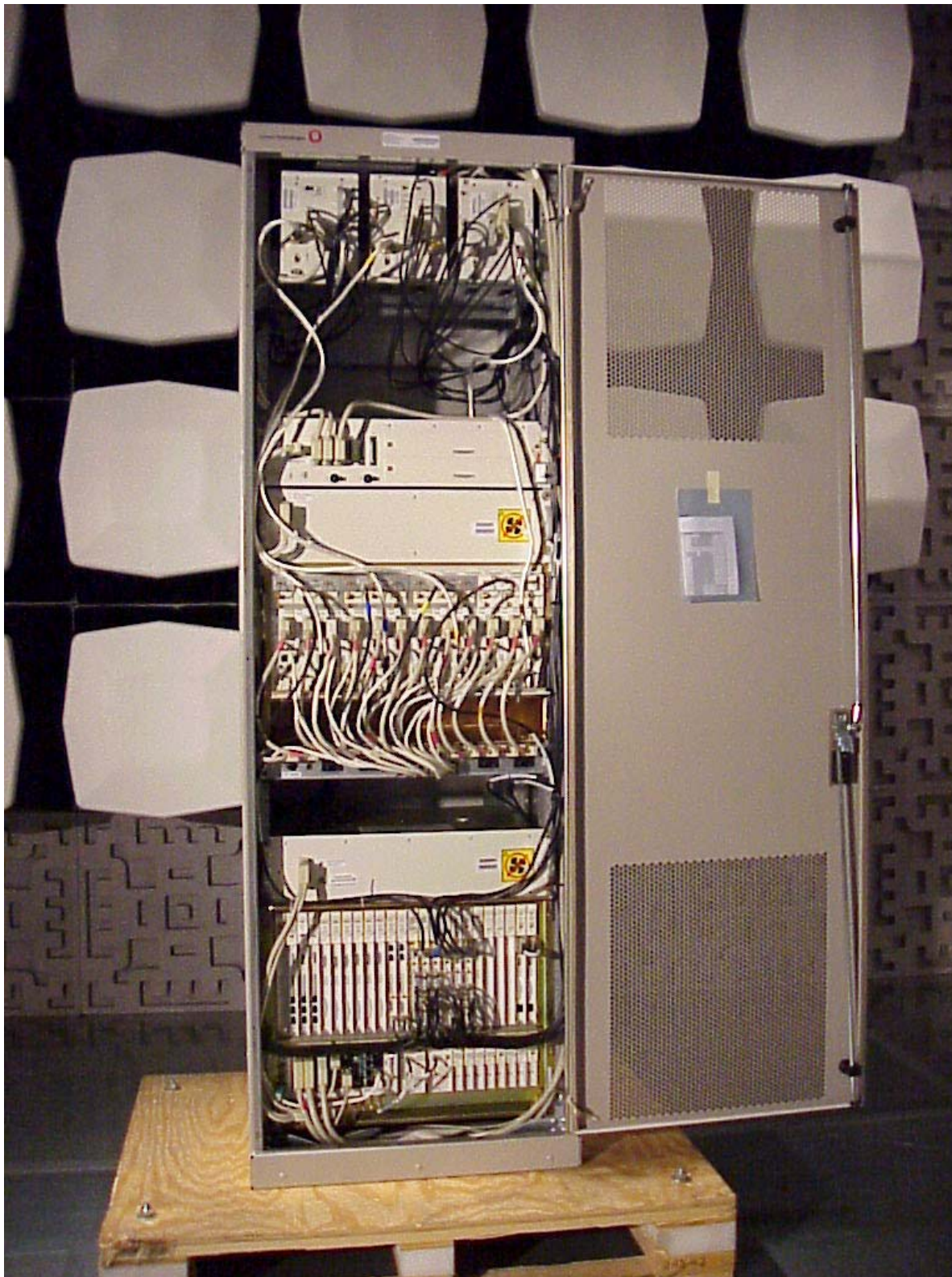
**View: Lucent Flexent OneBTS PCS CDMA Modular Cell 4.0- Rear View**





**Exhibit 9** *continued*

**View: Lucent Flexent OneBTS PCS CDMA Modular Cell 4.0- Internal Front View Open Door**





**Lucent Flexent OneBTS PCS CDMA Modular Cell 4.0-**

**Photograph of Typical Test Configuration for Occupied Bandwidth, Conducted Spurious and RF Power**

