

**EXHIBIT 4: EXTERNAL PHOTOGRAPHS**

Lucent UMTS Flexent® OneBTS™ “External Multi-Carrier Power Amplifier” (MCPA) Wireless Base Station, incorporating the PCS UMTS-CDMA Multi-Carrier CDMA Radio (MCR1900), BNJ64, configured for 3S1C operation at 3.3 Milliwatts/Carrier is shown in the following photographs. The UMTS MCR1900 is the subject of this request for Class II Permissive Change Authorization

**View: UMTS1900 MCPA Equipment Frame Front and Right Side View.**



**EXHIBIT 4: EXTERNAL PHOTOGRAPHS**

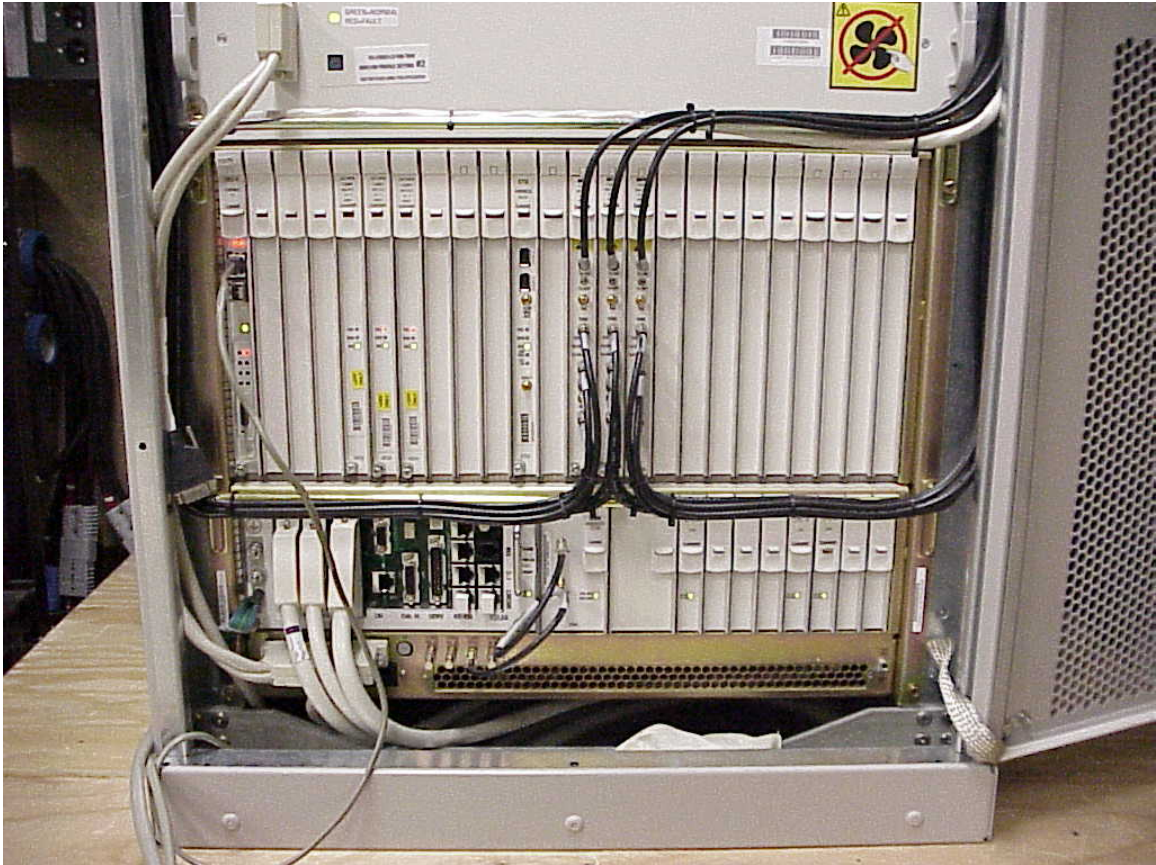
**View: UMTS1900 MCPA Equipment Frame Front View with Door Open**



- Notes: 1. Receive Filters at Frame Top  
2. Power Amplifiers Removed from Frame Center  
3. MCR1900 Transceivers, OMA and Digital Circuit Packs at Frame Bottom

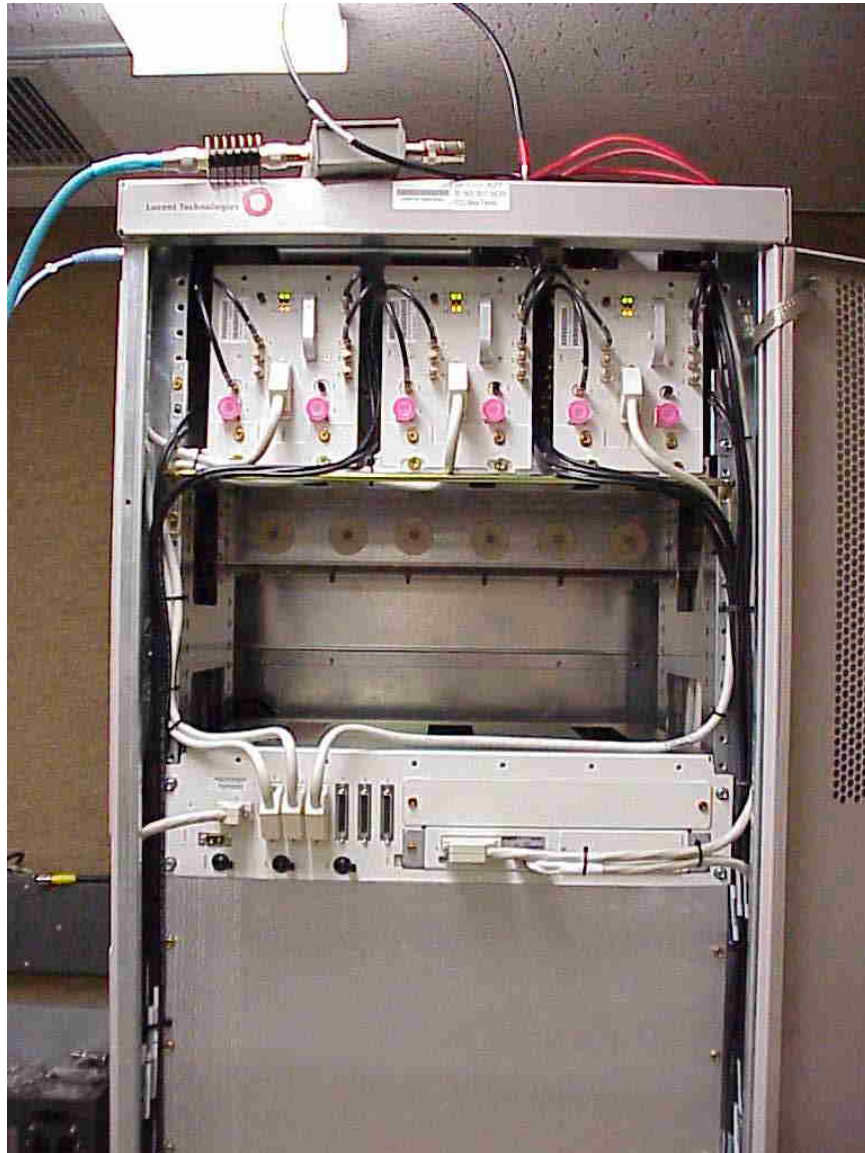
**EXHIBIT 4: EXTERNAL PHOTOGRAPHS**

**View: UMTS1900 MCPA Equipment Frame Front View Close-up, Showing the Digital Shelves with Three “Multi-Carrier CDMA Radios” (MCR1900), BNJ64.**



**EXHIBIT 4: EXTERNAL PHOTOGRAPHS**

**View: UMTS1900 MCPA Equipment Frame Front View Closeup, Showing the 60 MHz Dual Duplex Filter Shelf and Bandpass Filters Used for Receive Only.**



**EXHIBIT 4: EXTERNAL PHOTOGRAPHS**

**View: UMTS1900 MCPA Equipment Frame Top View Close-up, Showing the MCR1900 (BNJ64) Transceiver Transmit Terminals for 3S1C Operation.**

