

**EXHIBIT 9: EXTERNAL and INTERNAL PHOTOGRAPHS****SECTION 2.1033 (c) (12)**

Photographs (8"x10") of the equipment of sufficient clarity to reveal equipment construction and layout, including meters, if any, and labels for controls and meters and sufficient views of the internal construction to define component placement and chassis assembly. Insofar as these requirements are met by photographs or drawings contained in the instruction manuals supplied with the product certification request, additional photographs are necessary only to complete the required showing.

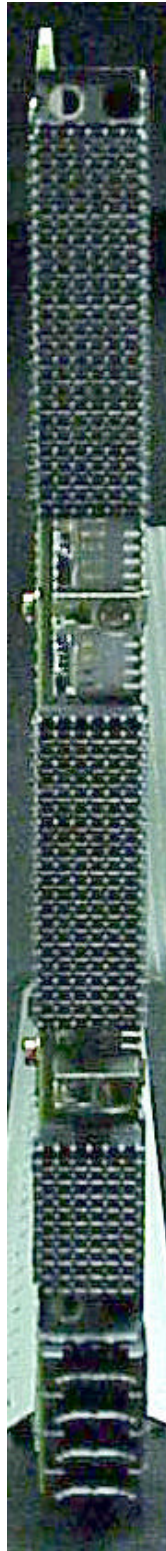
**RESPONSE:**

Attached below are digital internal and external photographs of the **MCR-1900 / FCC ID: AS5ONEBTS-09** showing the construction and layout are attached along with those showing the installation of the **MCR-1900** in the **FLEXENT OneBTS 4.0 PCS CDMA Indoor Modular Cell**.

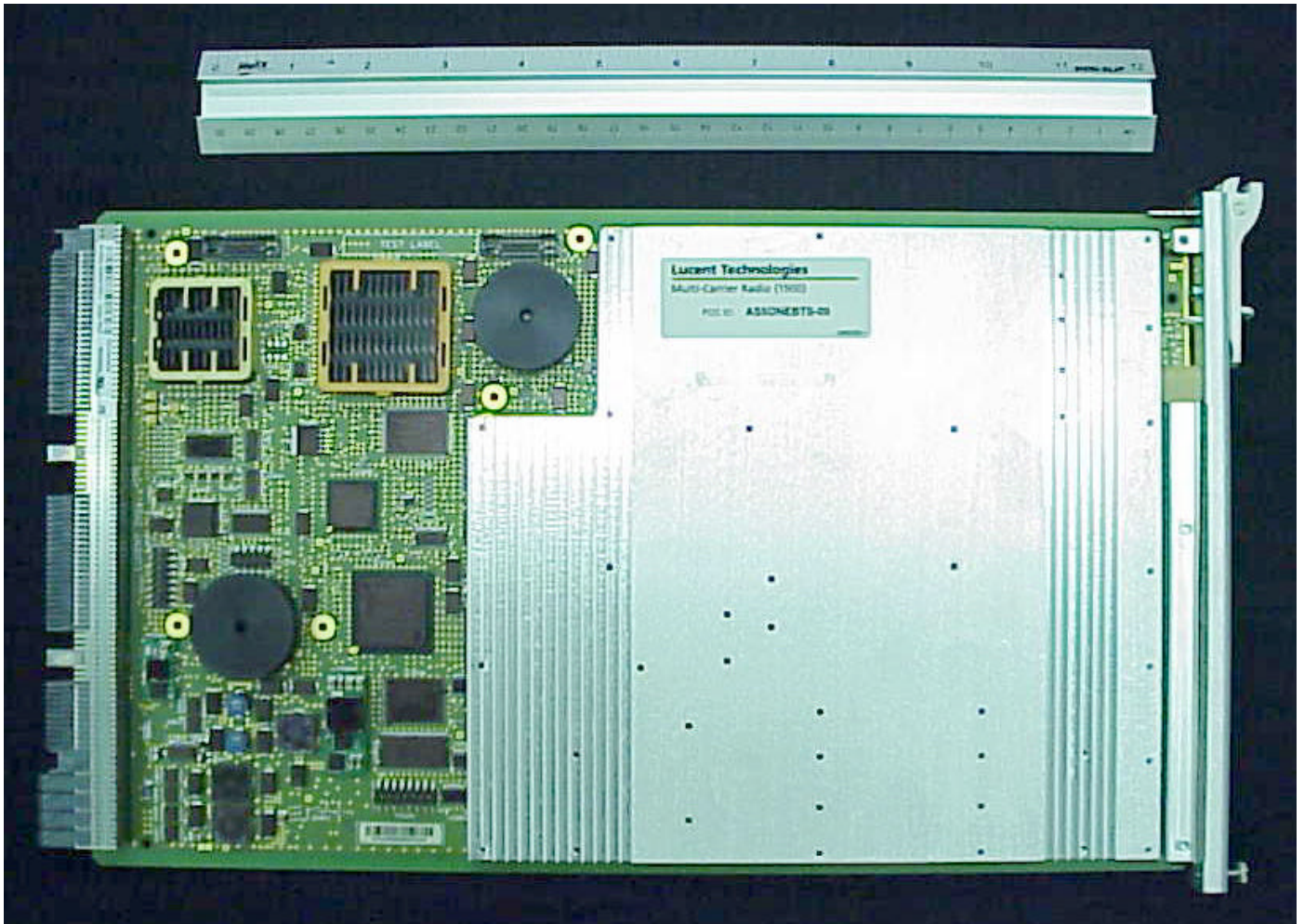
**External Photographs of MCR-1900 Front Faceplate View**



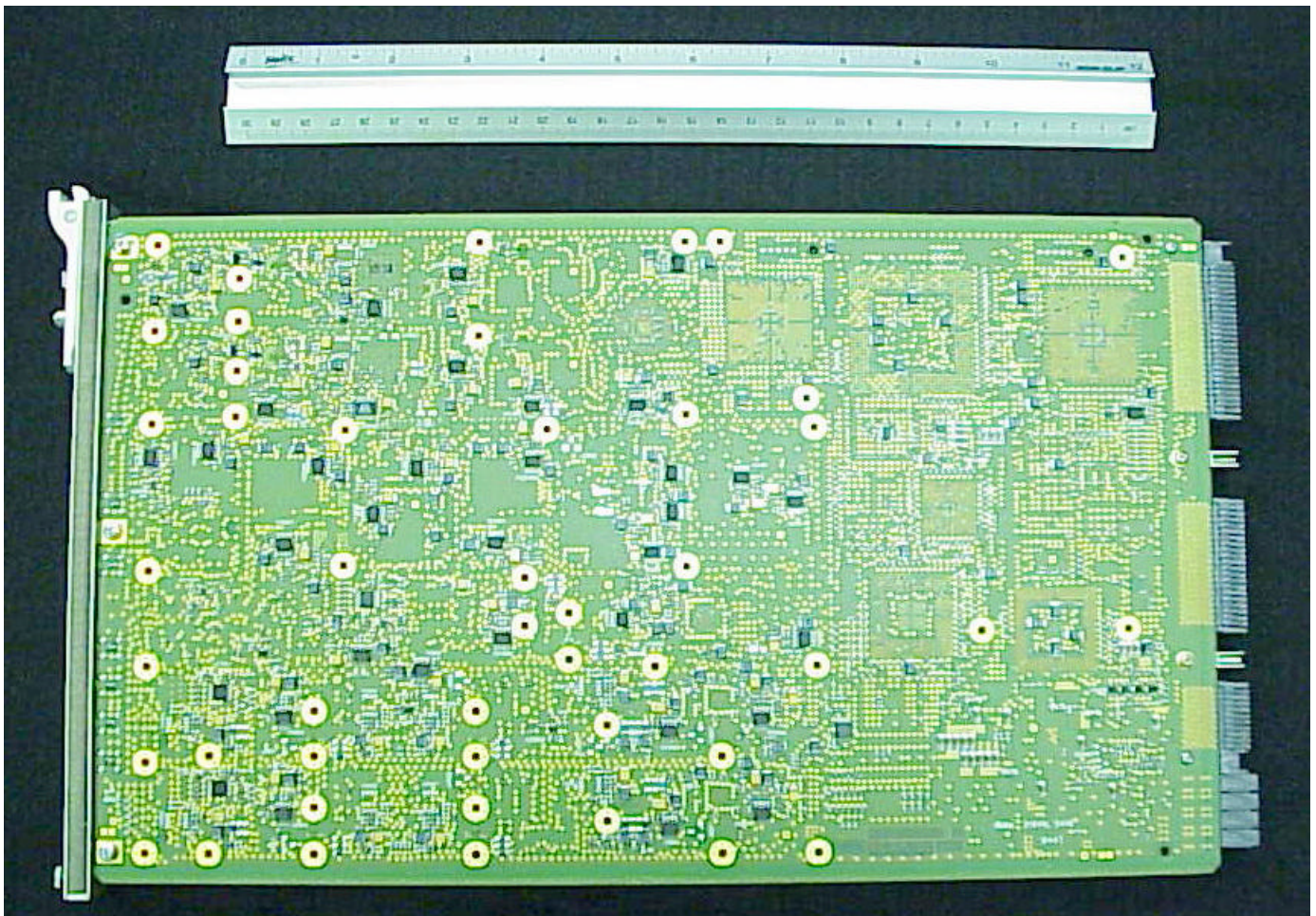
**External Photographs of MCR-1900 Rear Connector View**



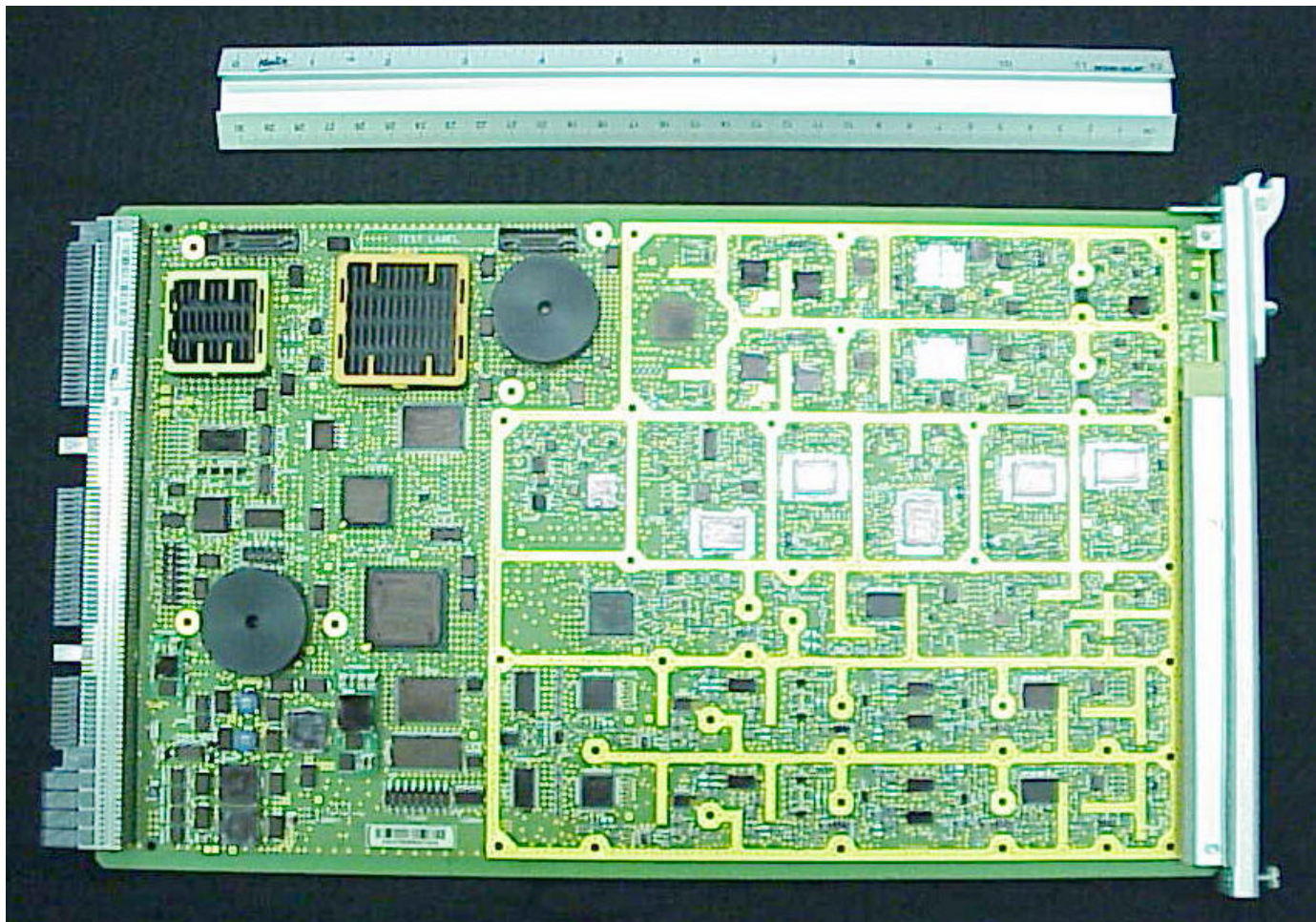
**External Photographs of MCR-1900 Left Side View**



**External Photographs of MCR-1900 Right Side View**



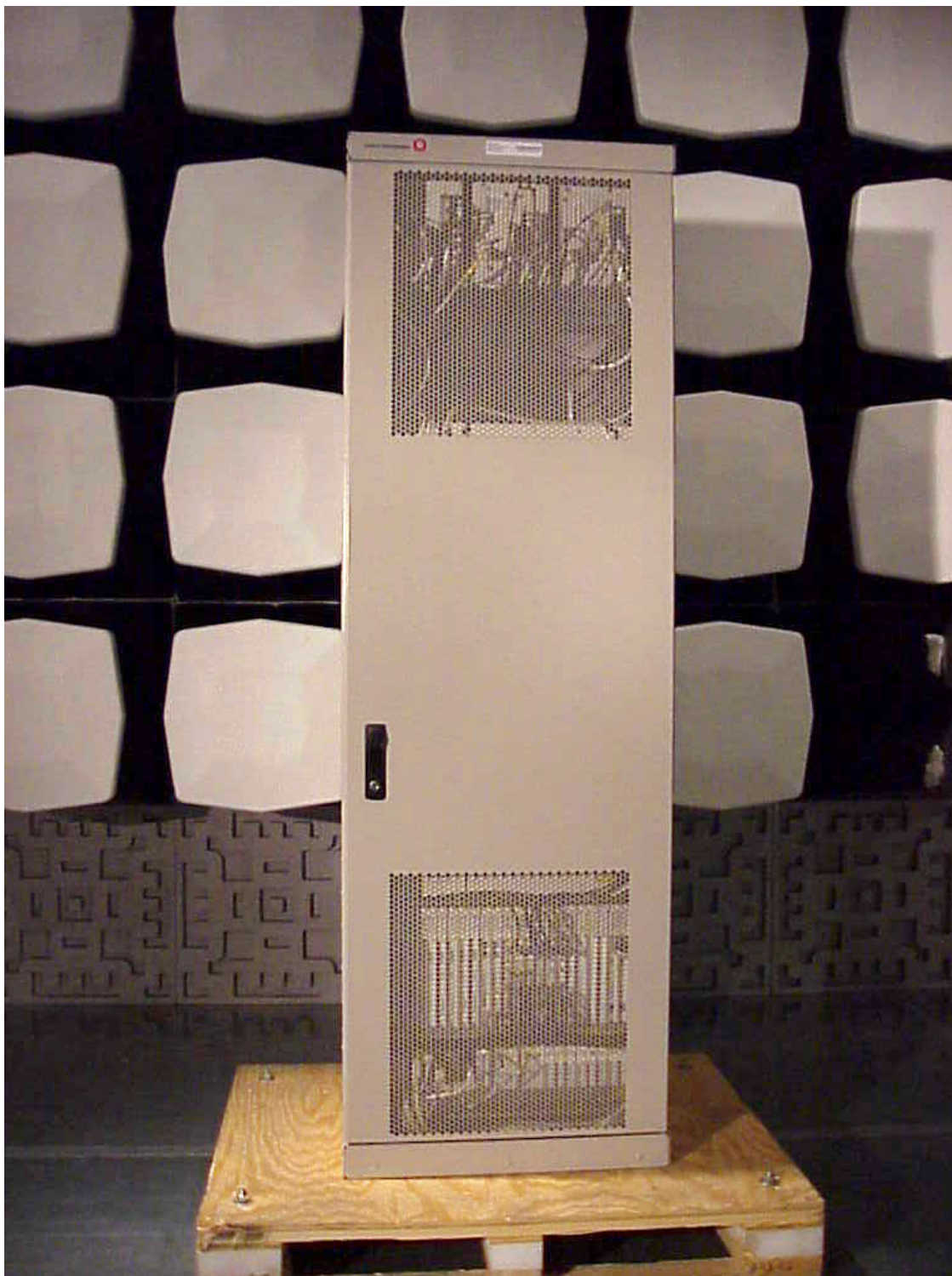
**Internal Photographs of MCR-1900 Left Side View**



**External Photographs of Lucent Flexent OneBTS PCS CDMA Modular Cell 4.0**

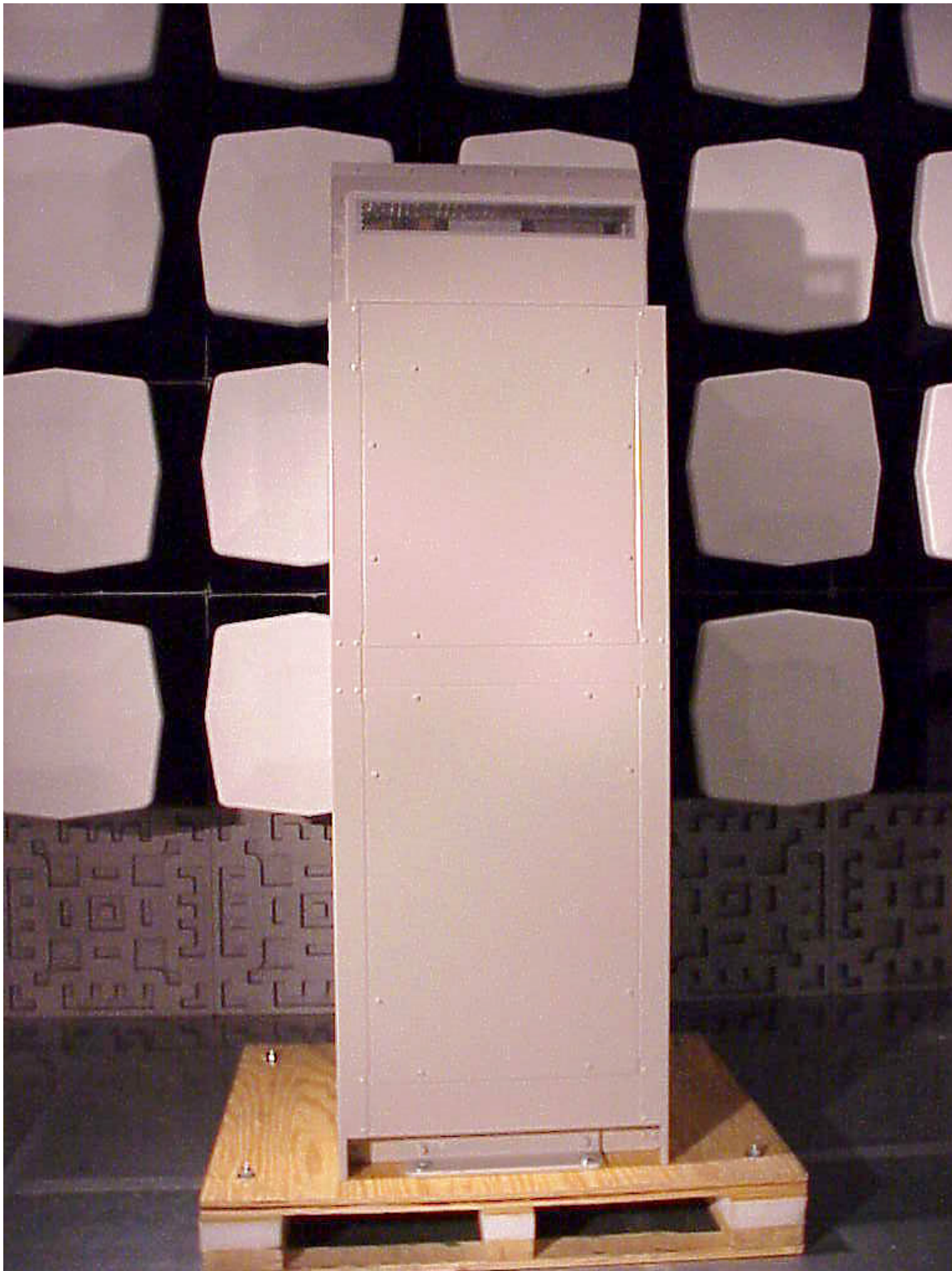
Lucent Flexent OneBTS PCS CDMA Modular Cell incorporating the PCS Multi-Carrier Radio (MCR1900), BNJ64, the P2PAM power amplifier, and the 15 MHz wideband, low loss, Dual Duplex (DDpx) bandpass filters.

**View: Lucent Flexent OneBTS PCS CDMA Modular Cell 4.0- Front View**



**Lucent Technologies Inc. - Proprietary**  
Use pursuant to Company Instructions.

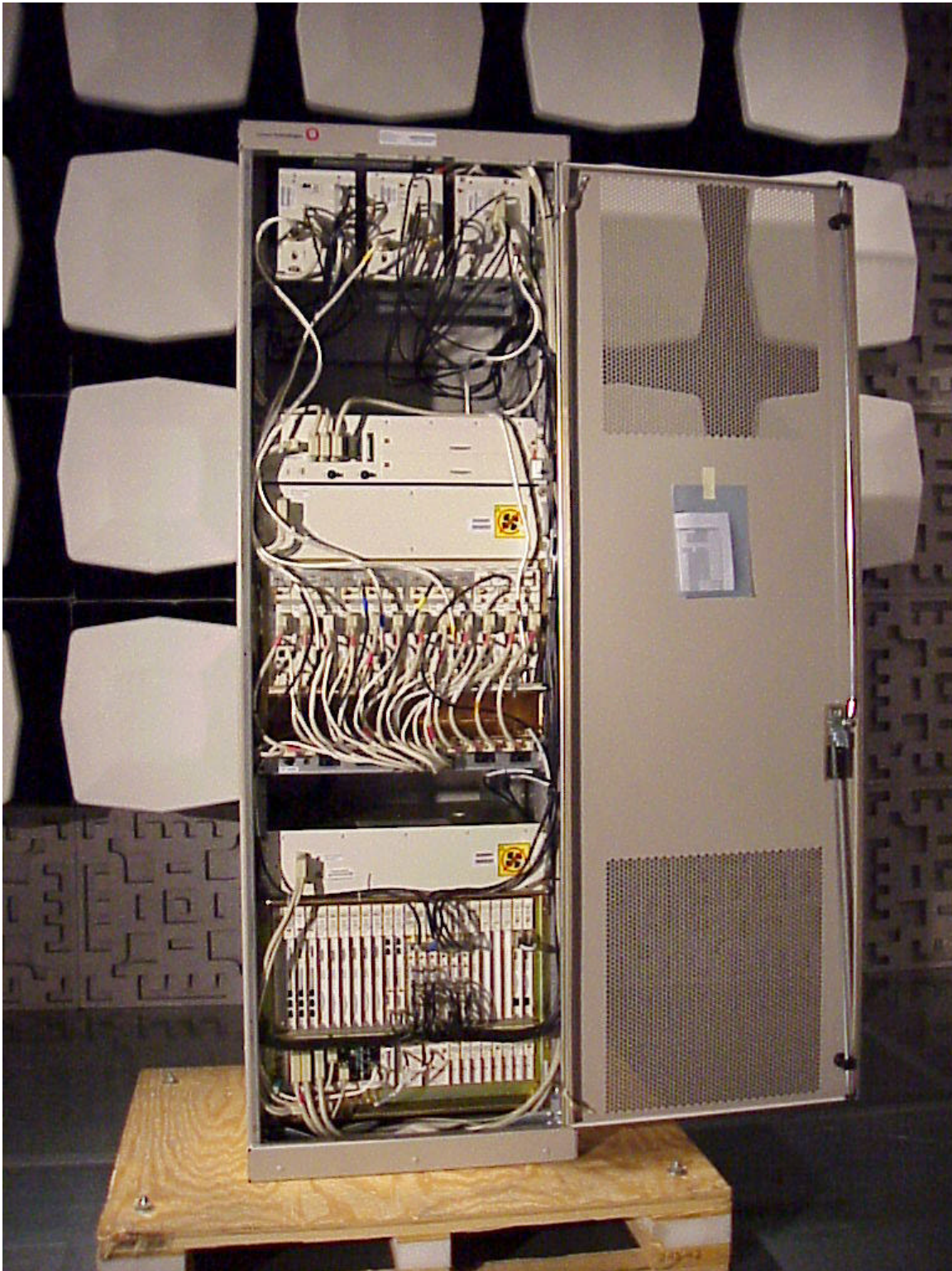
View: Lucent Flexent OneBTS PCS CDMA Modular Cell 4.0- Rear View



**Lucent Technologies Inc. - Proprietary**  
Use pursuant to Company Instructions.



View: Lucent Flexent OneBTS PCS CDMA Modular Cell 4.0- Front View Open Door



**Lucent Technologies Inc. - Proprietary**  
Use pursuant to Company Instructions.

**Lucent Flexent OneBTS PCS CDMA Modular Cell 4.0-**

**Photograph of Typical Test Configuration**

