

APPLICANT: LUCENT TECHNOLOGIES

FCC ID: AS5ONEBTS-05

EXHIBIT 6: TEST SET UP PHOTOGRAPHS

The photographs in this exhibit show the test equipment configured for the following tests:

Lucent UMTS Flexent® OneBTS™ W1900M (SD-2R521-01) Wireless Base Station, incorporating the PCS UMTS-CDMA Radio (UCR1900), BNJ27B/BNJ27C; the two parallel P2PAM power amplifiers per RF path; and the 20 MHz wideband, low loss, Dual Duplex (DDpx) bandpass filters: A/D, B/E and F/C.

TEST: **Measurement of RF Power Output**
Measurement of Occupied Bandwidth
Measurement of Spurious Emissions at the Antenna Terminals

View: **UMTS Equipment Frame Front View, Showing Test Configuration for Measuring Emissions Conducted to the Antenna Terminal .**



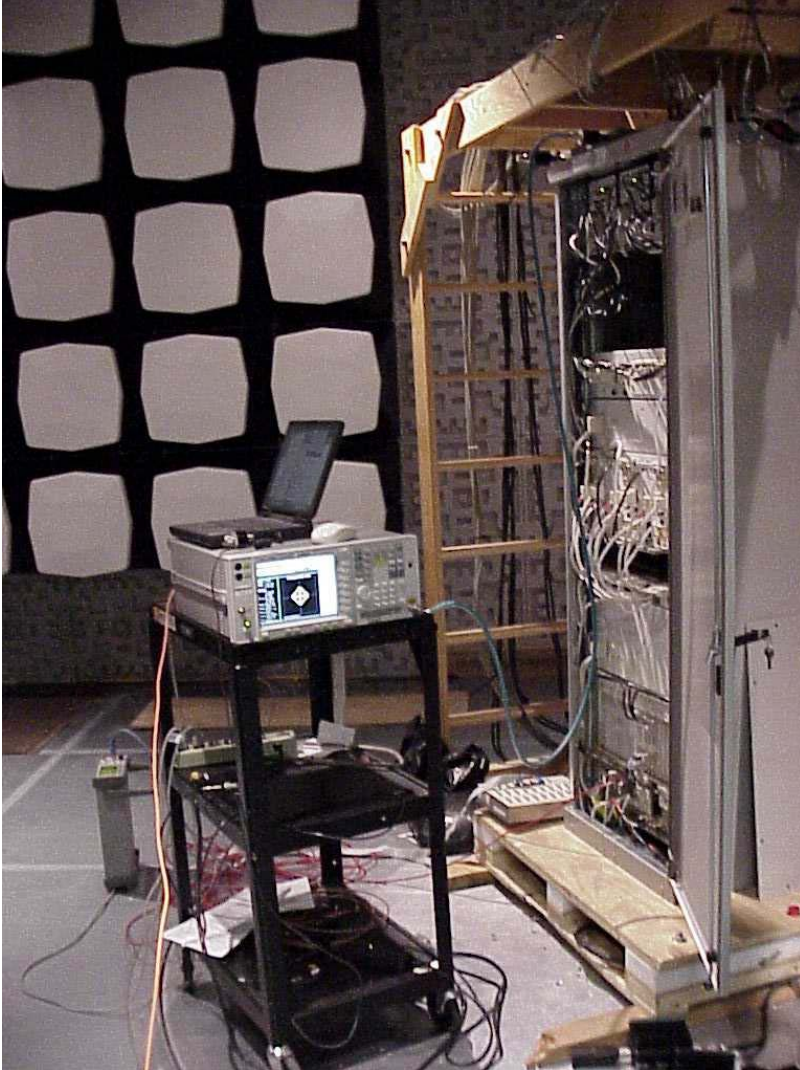
APPLICANT: LUCENT TECHNOLOGIES

FCC ID: AS5ONEBTS-05

EXHIBIT 6: TEST SET UP PHOTOGRAPHS

TEST: Measurement of Modulation Characteristics

View: UMTS Equipment Frame, Showing Test Configuration for Measuring Error Vector Magnitude (EVM) at the Antenna Terminal .



APPLICANT: LUCENT TECHNOLOGIES

FCC ID: AS5ONEBTS-05

EXHIBIT 6: TEST SET UP PHOTOGRAPHS

TEST: Measurement of Radiated Spurious Emissions

View: UMTS Equipment Frame Front View, Showing Test Configuration in the Whippany 3-Meter Semi-Anechoic Chamber.

