

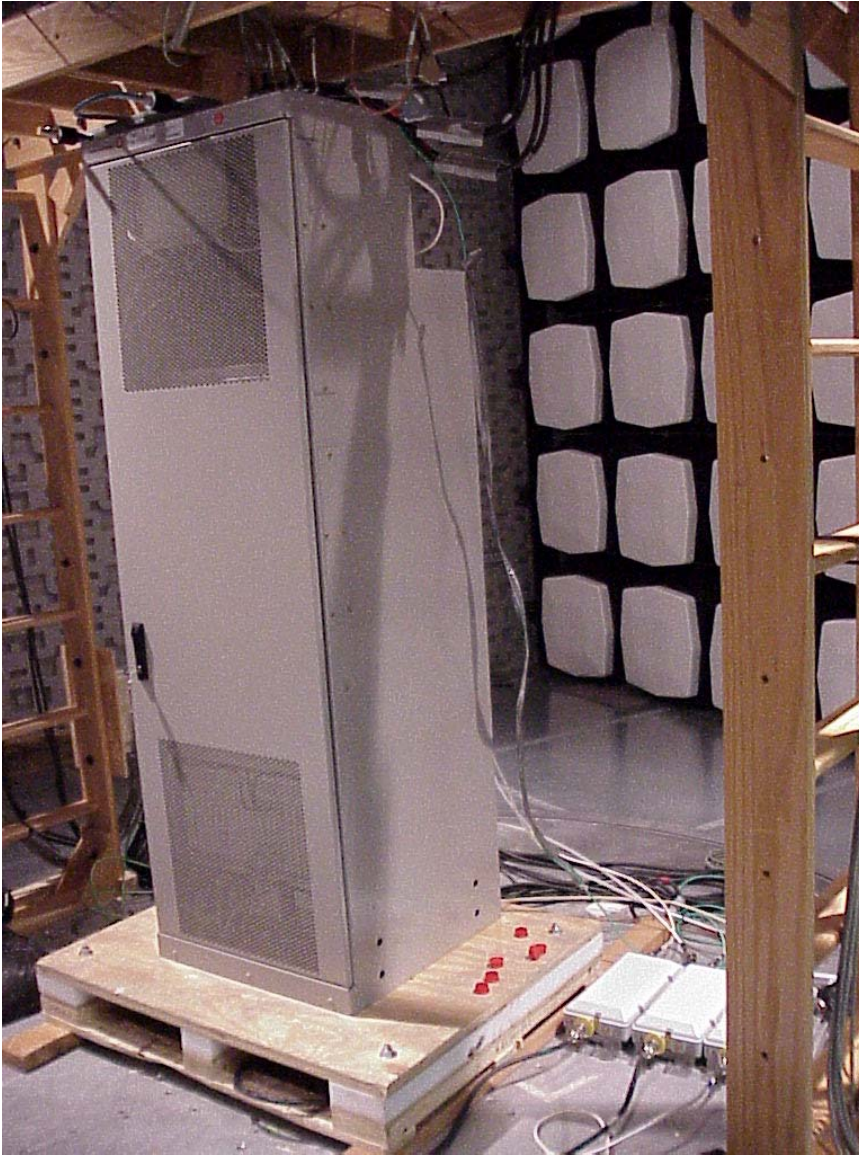
**APPLICANT: LUCENT TECHNOLOGIES**

**FCC ID: AS5ONEBTS-05**

**EXHIBIT 4: EXTERNAL PHOTOGRAPHS**

Lucent UMTS Flexent® OneBTS™ W1900M (SD-2R521-01) Wireless Base Station, incorporating the PCS UMTS-CDMA Radio (UCR1900), BNJ27B/BNJ27C; the two parallel P2PAM power amplifiers per RF path; and the 20 MHz wideband, low loss, Dual Duplex (DDpx) bandpass filters: A/D, B/E and F/C.

**View: UMTS Equipment Frame Front and Right Side View**



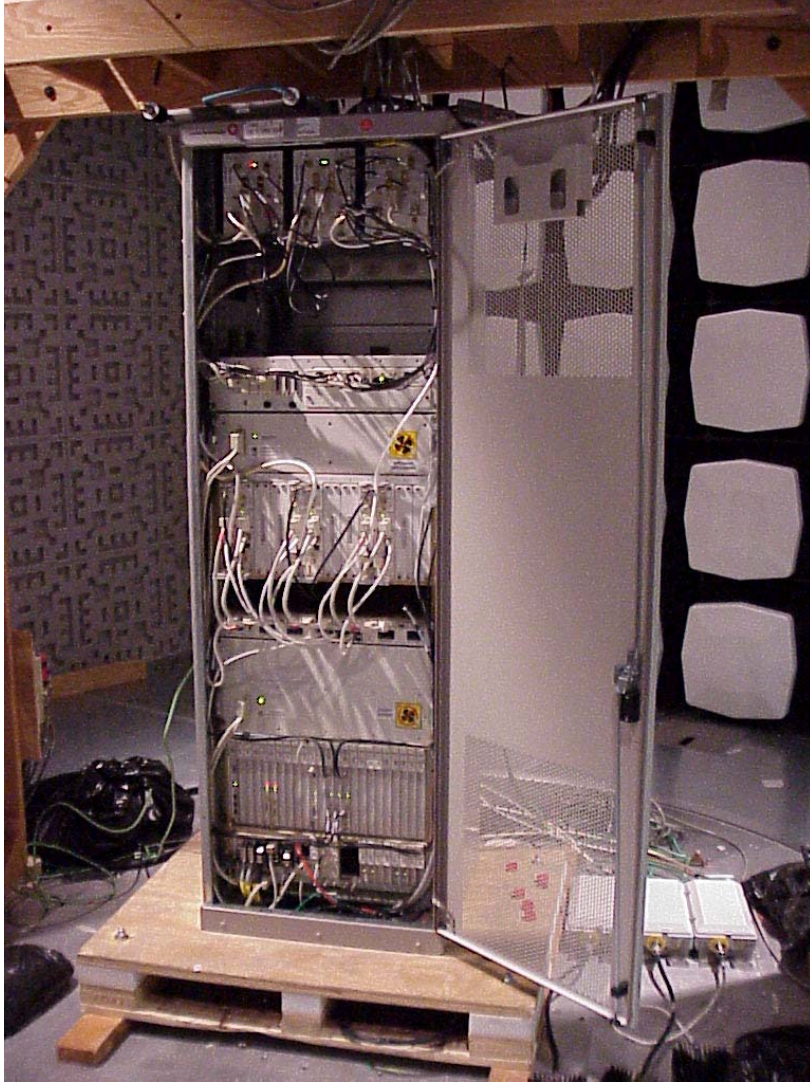
**APPLICANT: LUCENT TECHNOLOGIES**

**FCC ID: AS50NEBTS-05**

**EXHIBIT 4: EXTERNAL PHOTOGRAPHS**

Lucent UMTS Flexent® OneBTS™ W1900M (SD-2R521-01) Wireless Base Station, incorporating the PCS UMTS-CDMA Radio (UCR1900), BNJ27B/BNJ27C; the two parallel P2PAM power amplifiers per RF path; and the 20 MHz wideband, low loss, Dual Duplex (DDpx) bandpass filters: A/D, B/E and F/C.

**View: UMTS Equipment Frame Front View with Door Open**



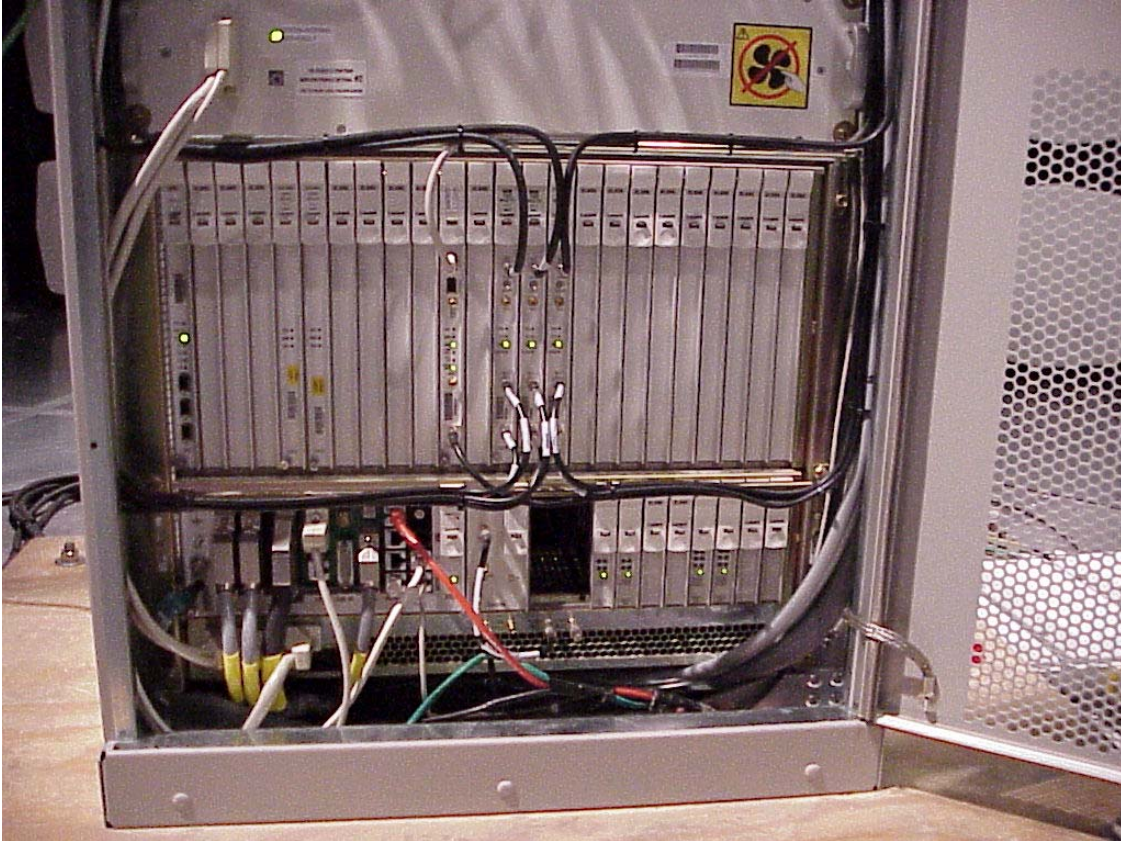
**APPLICANT: LUCENT TECHNOLOGIES**

**FCC ID: AS5ONEBTS-05**

**EXHIBIT 4: EXTERNAL PHOTOGRAPHS**

Lucent UMTS Flexent® OneBTS™ W1900M (SD-2R521-01) Wireless Base Station, incorporating the PCS UMTS-CDMA Radio (UCR1900), BNJ27B/BNJ27C; the two parallel P2PAM power amplifiers per RF path; and the 20 MHz wideband, low loss, Dual Duplex (DDpx) bandpass filters: A/D, B/E and F/C.

**View: UMTS Equipment Frame Front View, Showing the PCS UMTS-CDMA Radio (UCR1900), BNJ27B/BNJ27C, Shelf Close-up.**



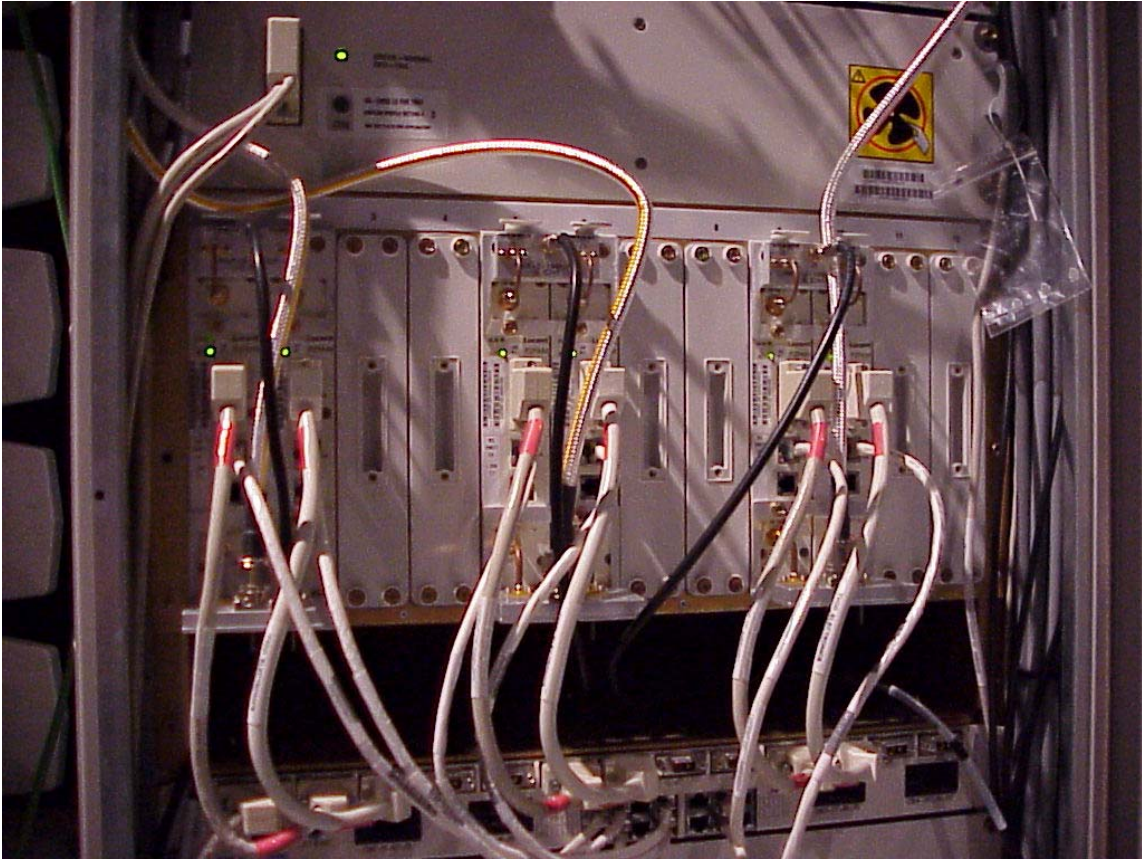
**APPLICANT: LUCENT TECHNOLOGIES**

**FCC ID: AS5ONEBTS-05**

**EXHIBIT 4: EXTERNAL PHOTOGRAPHS**

Lucent UMTS Flexent® OneBTS™ W1900M (SD-2R521-01) Wireless Base Station, incorporating the PCS UMTS-CDMA Radio (UCR1900), BNJ27B/BNJ27C; the two parallel P2PAM power amplifiers per RF path; and the 20 MHz wideband, low loss, Dual Duplex (DDpx) bandpass filters: A/D, B/E and F/C.

**View: UMTS Equipment Frame Front View, Showing the P2PAM Power Amplifier Shelf Close-up.**



APPLICANT: LUCENT TECHNOLOGIES

FCC ID: AS50NEBTS-05

**EXHIBIT 4: EXTERNAL PHOTOGRAPHS**

Lucent UMTS Flexent® OneBTS™ W1900M (SD-2R521-01) Wireless Base Station, incorporating the PCS UMTS-CDMA Radio (UCR1900), BNJ27B/BNJ27C; the two parallel P2PAM power amplifiers per RF path; and the 20 MHz wideband, low loss, Dual Duplex (DDpx) bandpass filters: A/D, B/E and F/C.

**View: UMTS Equipment Frame Front View, Showing the 20 MHz Wideband, Low Loss, Dual Duplex (DDpx) Filter Shelf Close-up, with A/D, B/E and F/C filters.**

