

PHOTOGRAPH OF CONSTRUCTION
SECTION 2.1033 (c) (12)
(External Photos)

(Lucent Technologies Confidential Proprietary Information)

PHOTOGRAPH OF CONSTRUCTION

SECTION 2.1033(c) (12)

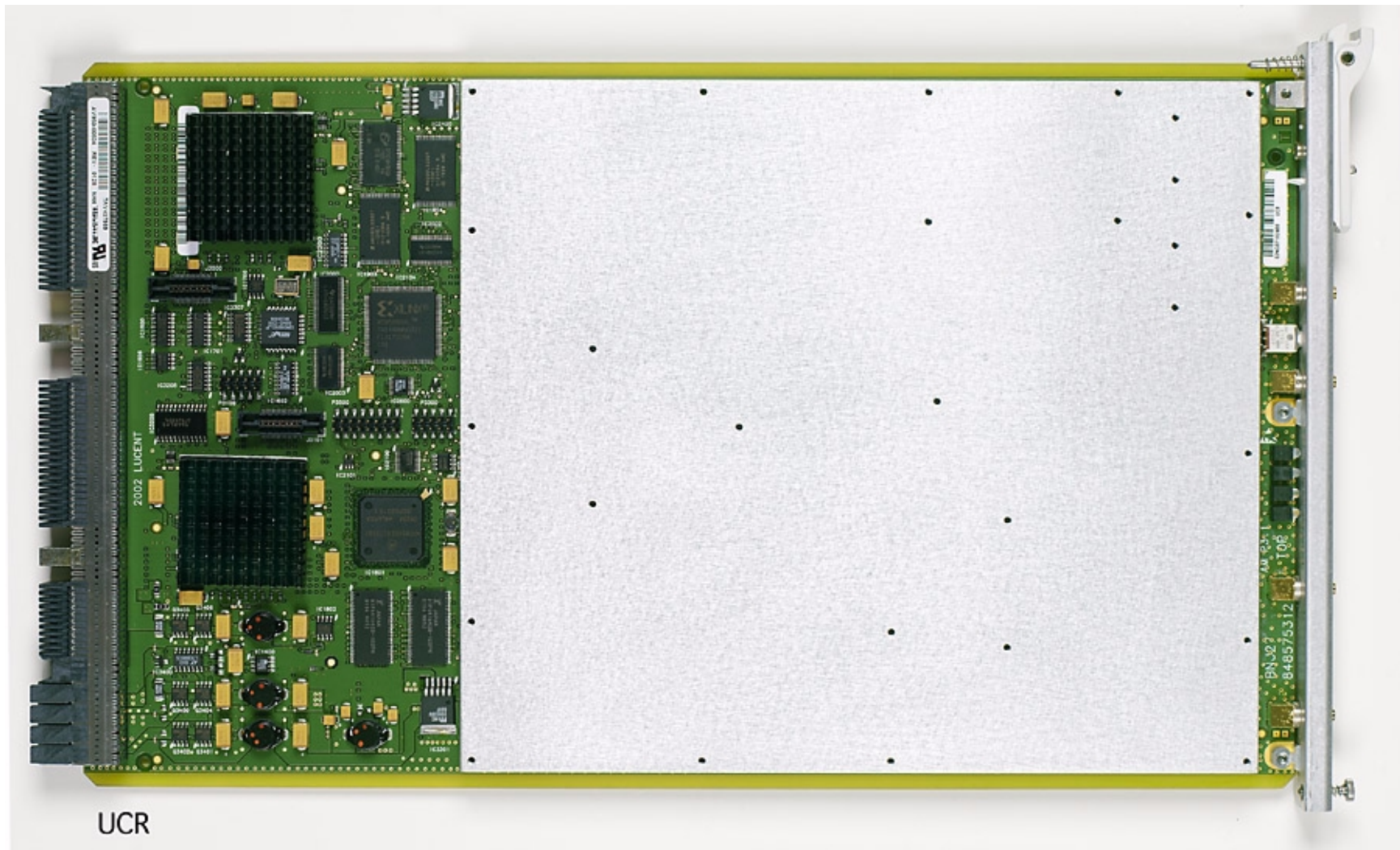
Photographs (8" x 10") of the equipment of sufficient clarity to reveal equipment construction and layout, including meters, if any, and labels for controls and meters and sufficient views of the internal construction to define component placement and chassis assembly. Insofar as these requirements are met by photographs or drawings contained in instruction manuals supplied with the certification request, additional photographs are necessary only to complete the required showing.

RESPONSE:

Equipment construction, layout, including meters, and labels for control are indicated in Installation, Test and Operational Manual (see Section on "Users Manual"). Internal photographs are included in the Section Internal Photos.

Following additional external photographs are included:

1. Photograph of UCR front
2. Photograph of UCR Rear



UCR

Figure 1. Photograph of UCR front

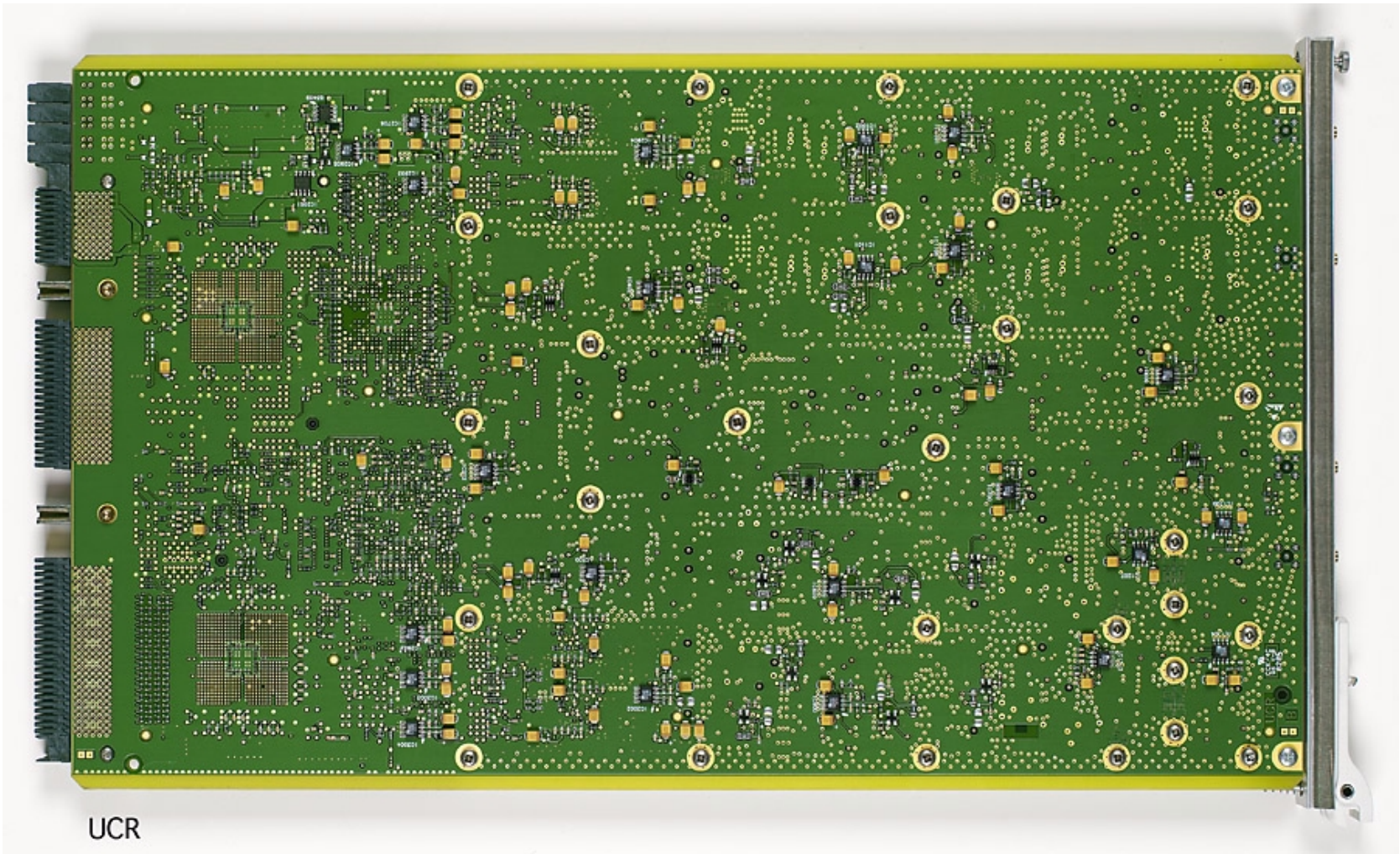


Figure 2. Photograph of UCR Rear