

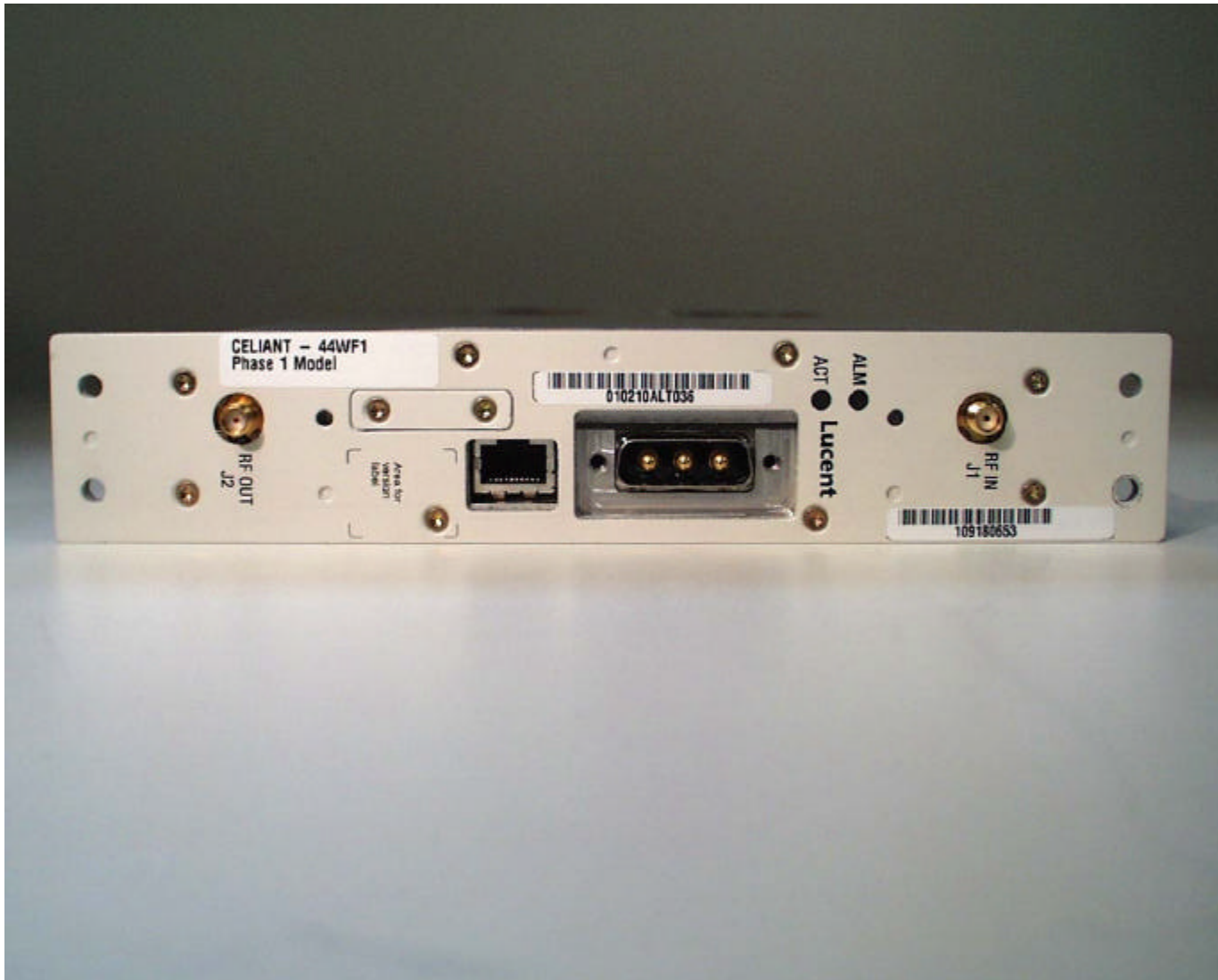
Exhibit 19 *continued*

**Internal and external
Photographs
of the
Lucent Technologies Inc.
Linear Amplifier Module Model k (kLAM)**

FCC ID: AS5ONEBTS-02

Exhibit 19 *continued*

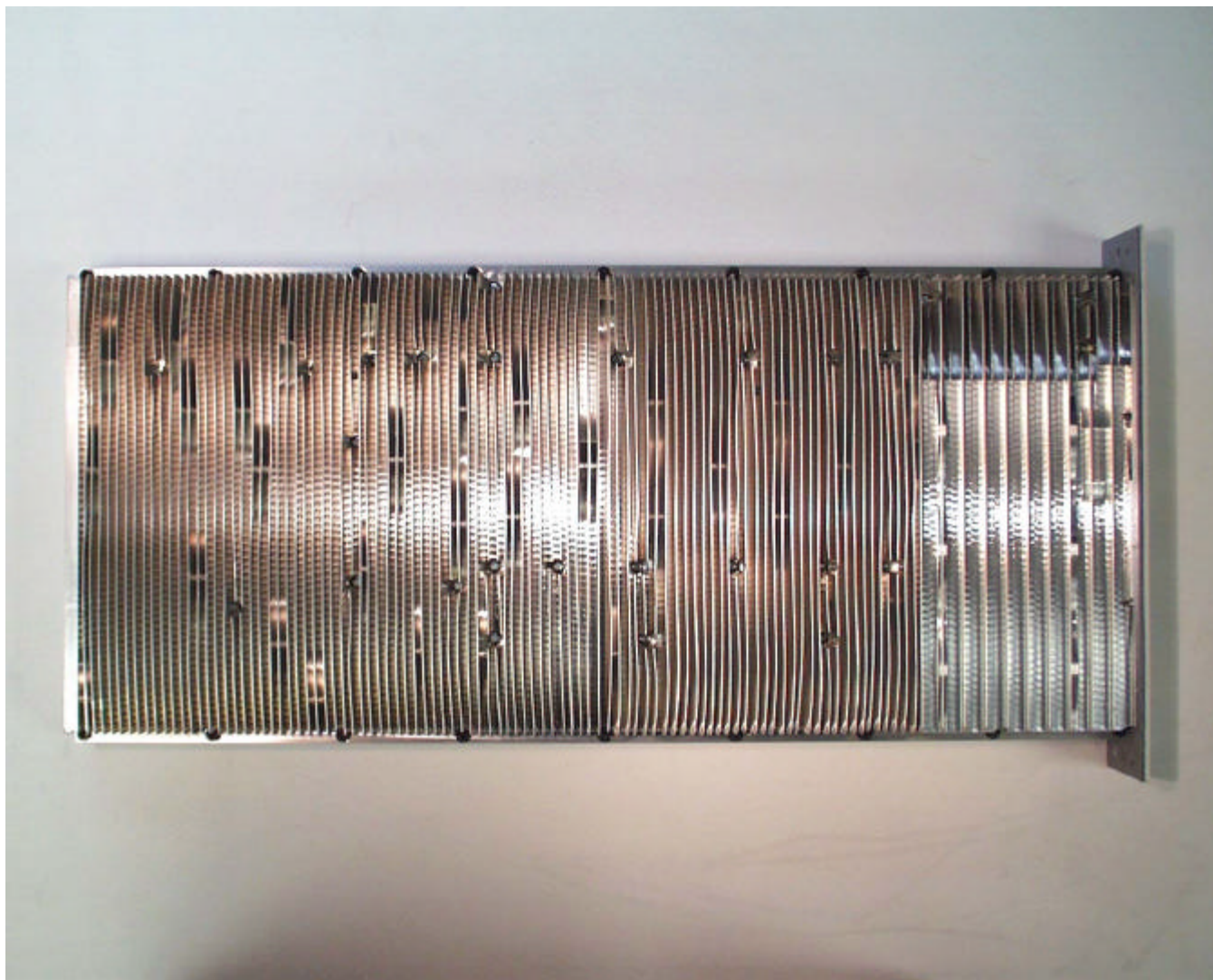
KLAM FCCID: AS5ONEBTS-02 – Module Enclosure - Front



**Lucent Technologies Inc / Celiant Corporation - Proprietary
Use pursuant to Company Instructions**

Exhibit 19 *continued*

kLAM –FCC ID: AS5ONEBTS-02 Module Enclosure – Bottom – Outside



**Lucent Technologies Inc / Celiant Corporation - Proprietary
Use pursuant to Company Instructions**

Exhibit 19 *continued*

kLAM –FCC ID: AS5ONEBTS-02 – Module Enclosure – Top – Outside

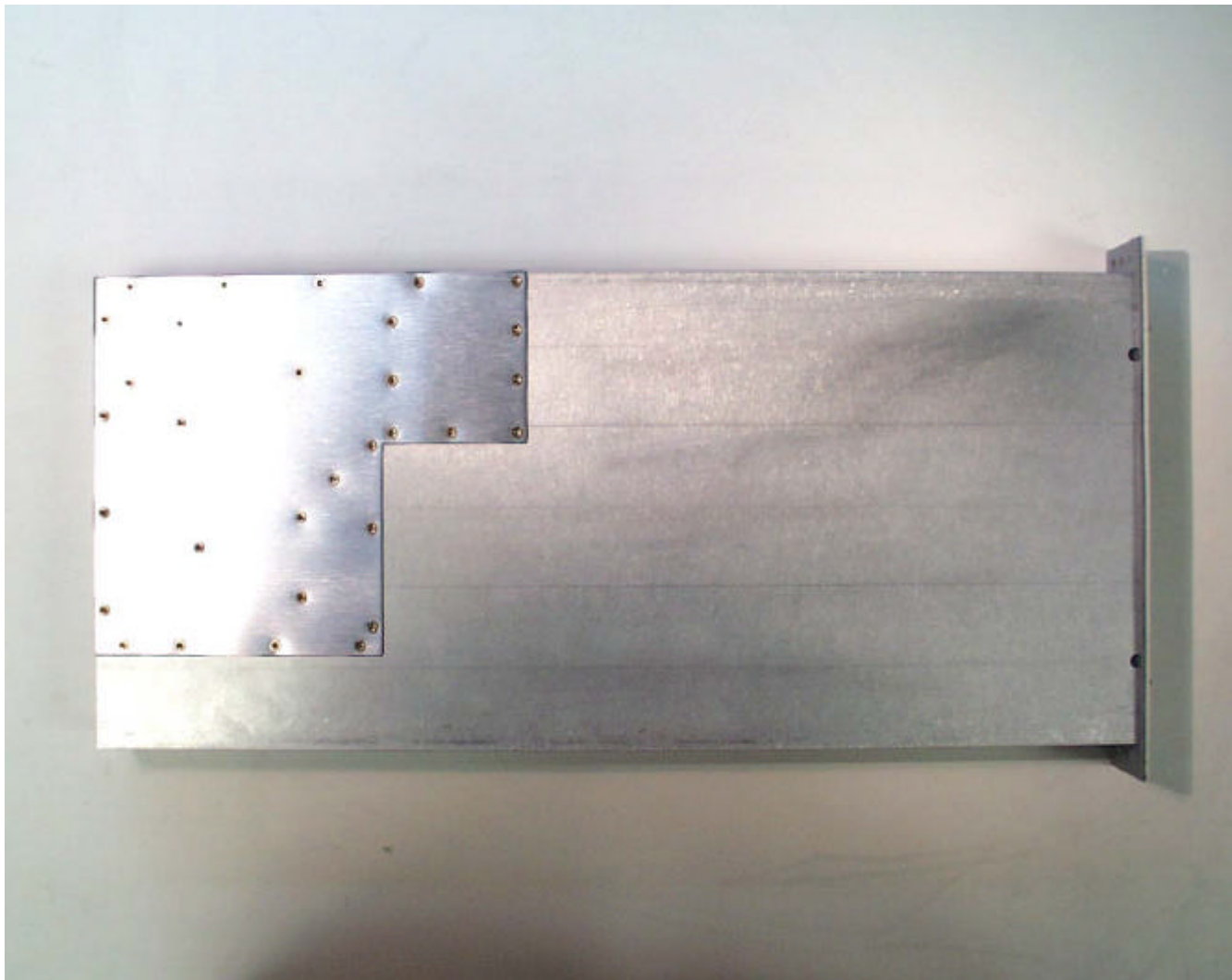
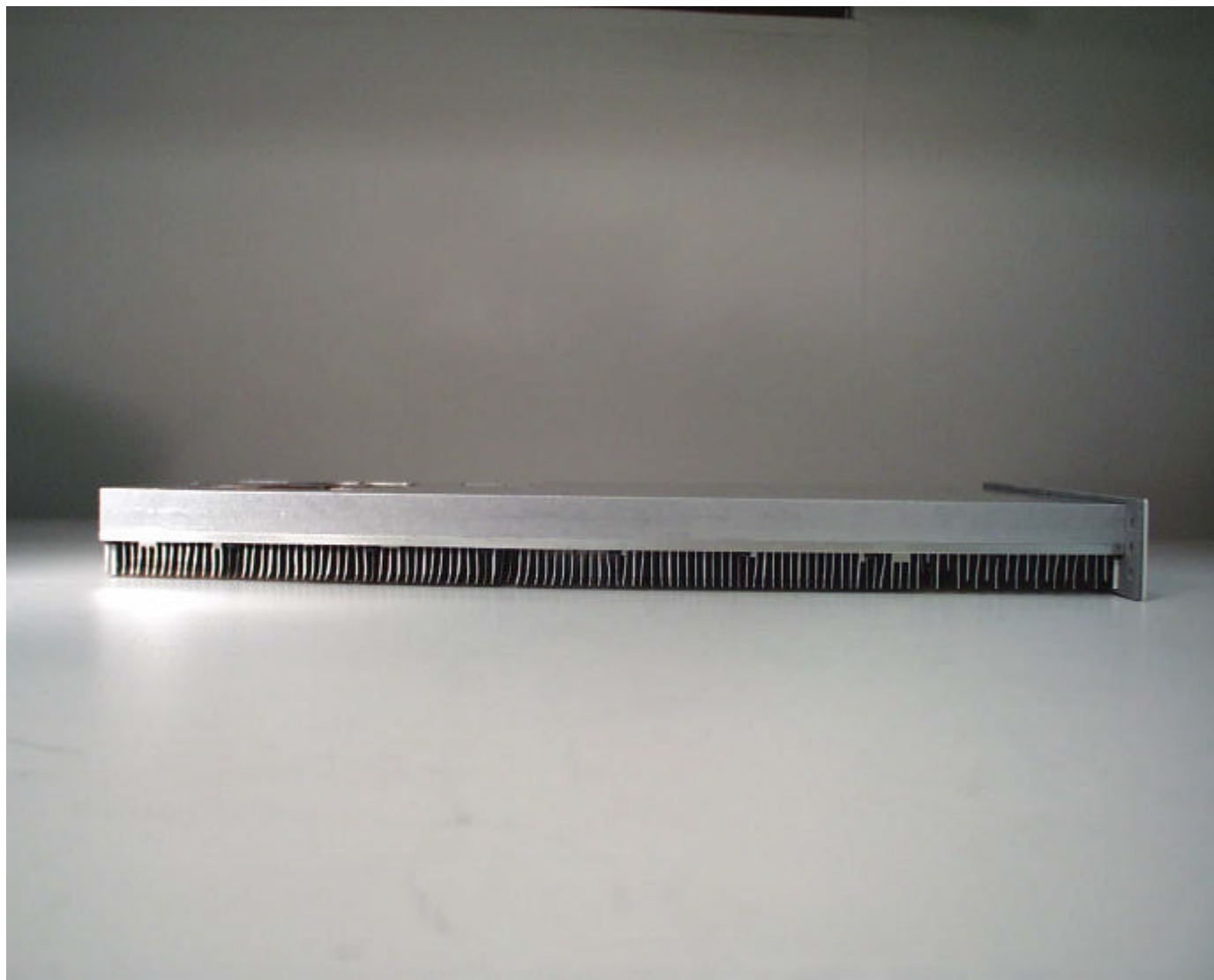


Exhibit 19 *continued*

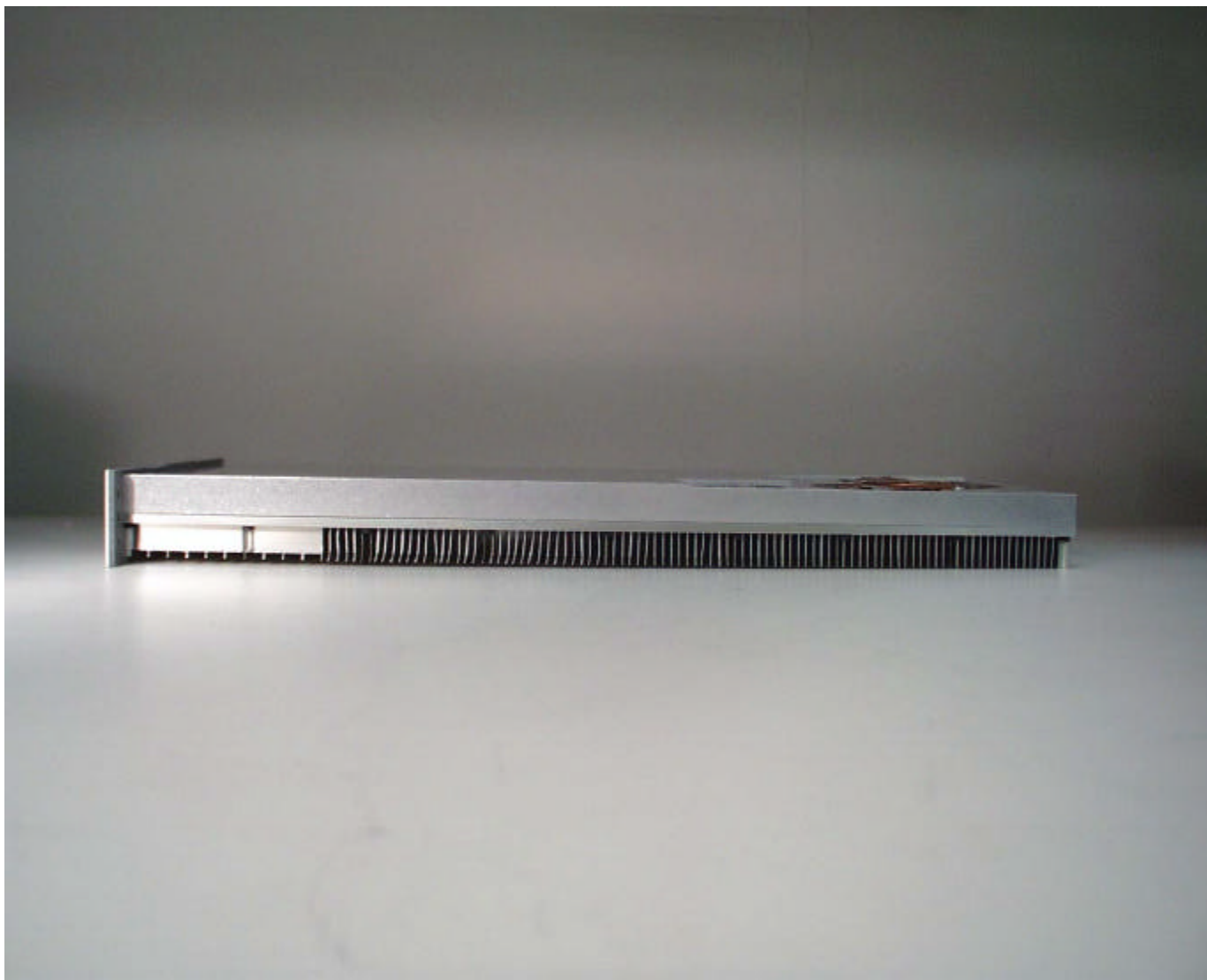
kLAM –FCC ID: AS5ONEBTS-02 – Module Enclosure – Side A



**Lucent Technologies Inc / Celiant Corporation - Proprietary
Use pursuant to Company Instructions**

Exhibit 19 *continued*

kLAM –FCC ID: AS5ONEBTS-02 – Module Enclosure – Side B



**Lucent Technologies Inc / Celiant Corporation - Proprietary
Use pursuant to Company Instructions**

Exhibit 19 *continued*

KLAM-FCC ID: AS50NEBTS-02 – PCB Boards – Component Side

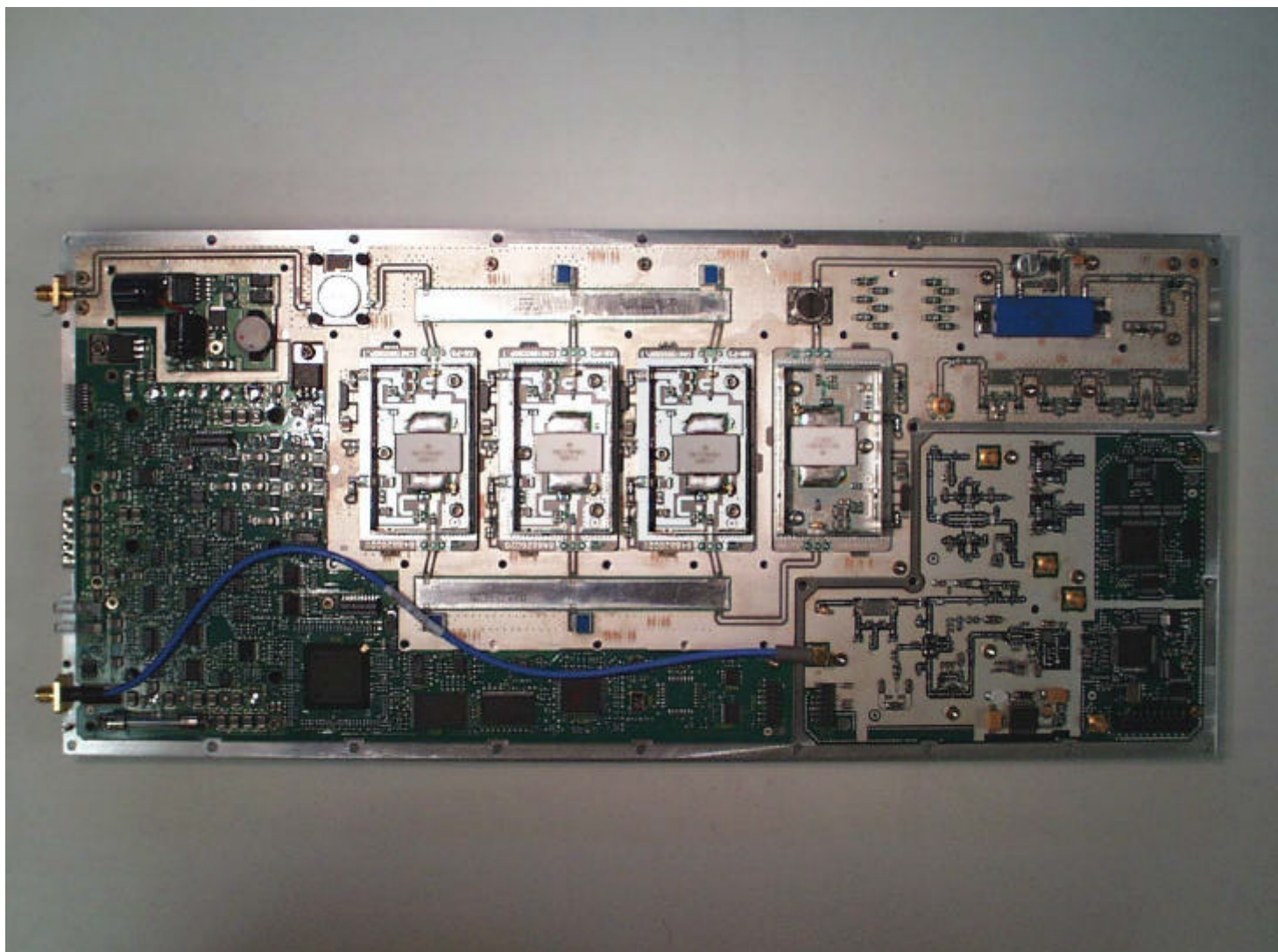


Exhibit 19 *continued*

KLAM-FCC ID: AS5ONEBTS-02 – PCB Boards – Back Side

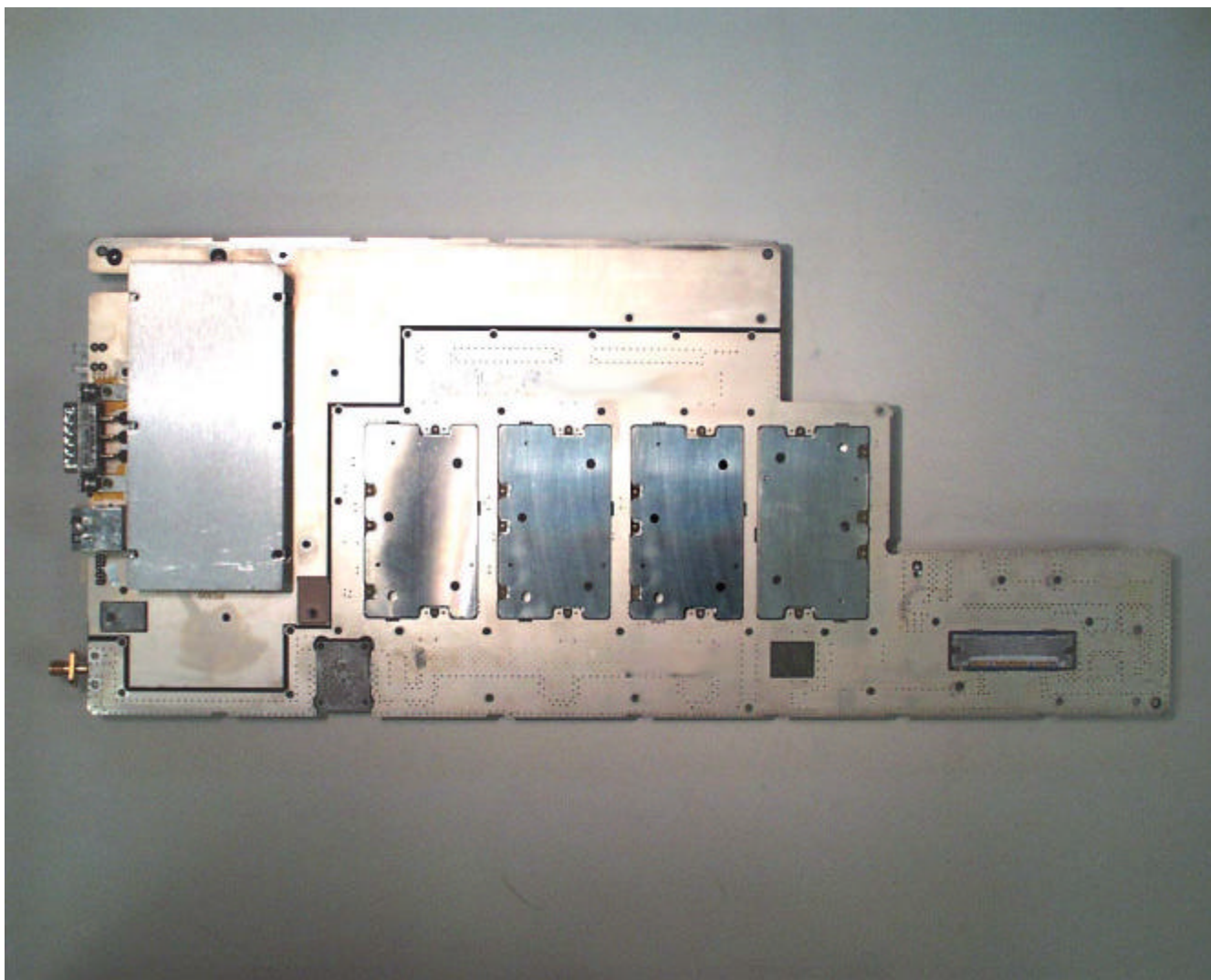
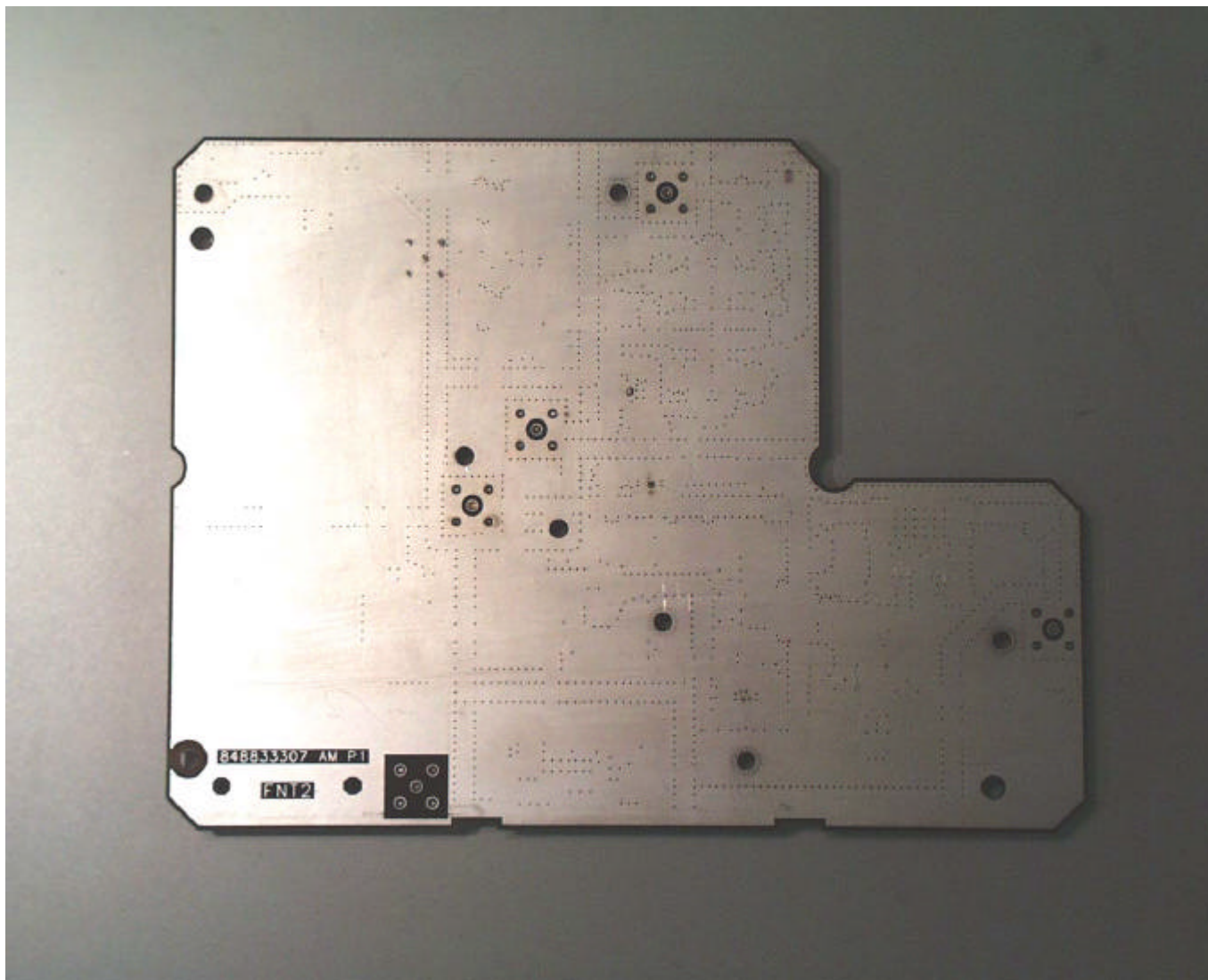


Exhibit 19 *continued*

KLAM-FCC ID: AS5ONEBTS-02 – Digital PCB Board – Back Side



**Lucent Technologies Inc / Celiant Corporation - Proprietary
Use pursuant to Company Instructions**