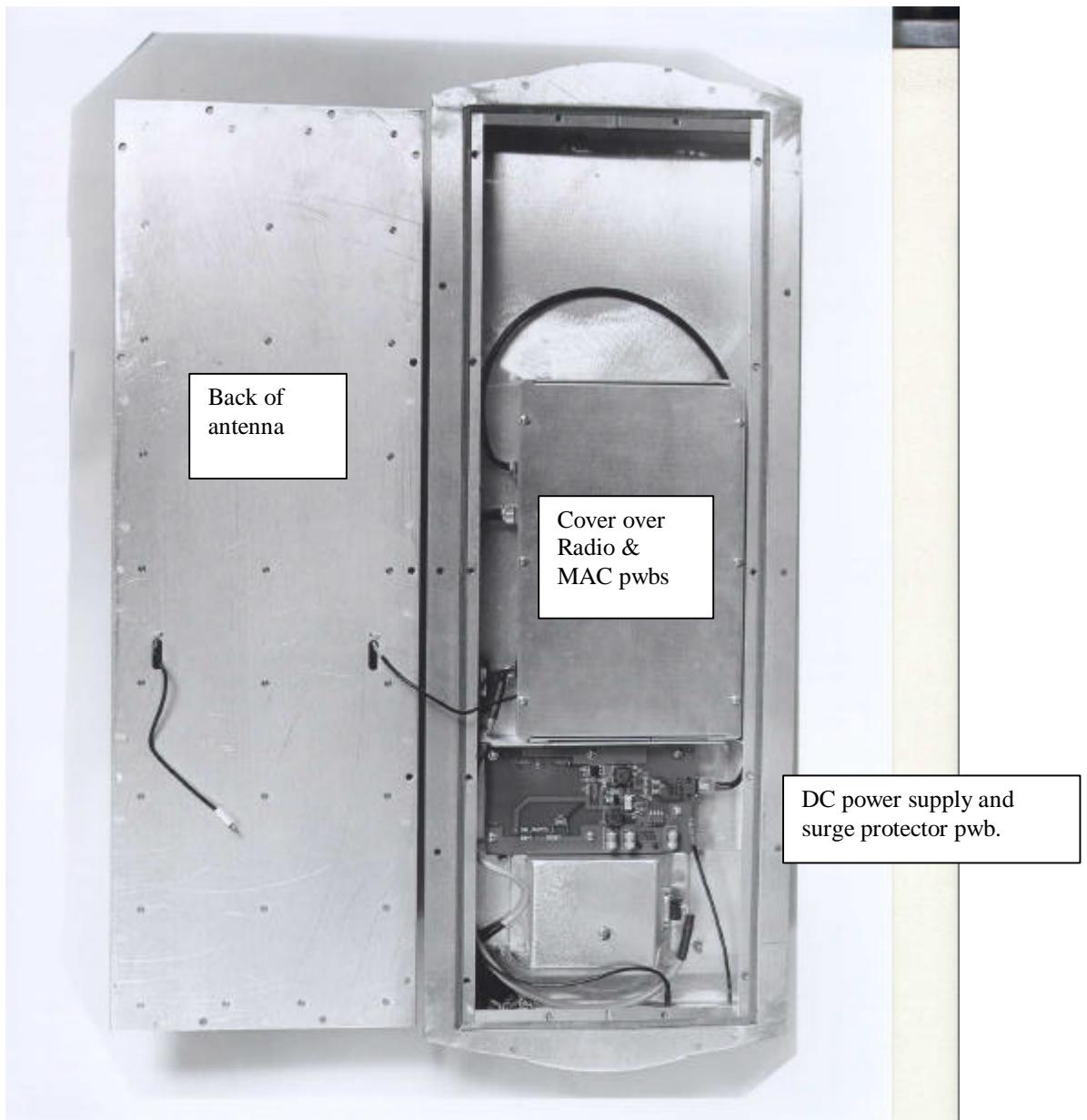


# **EXHIBIT 7**

## **Photographs Internal Construction**

**SECTION 2.1033 (b) (7)**

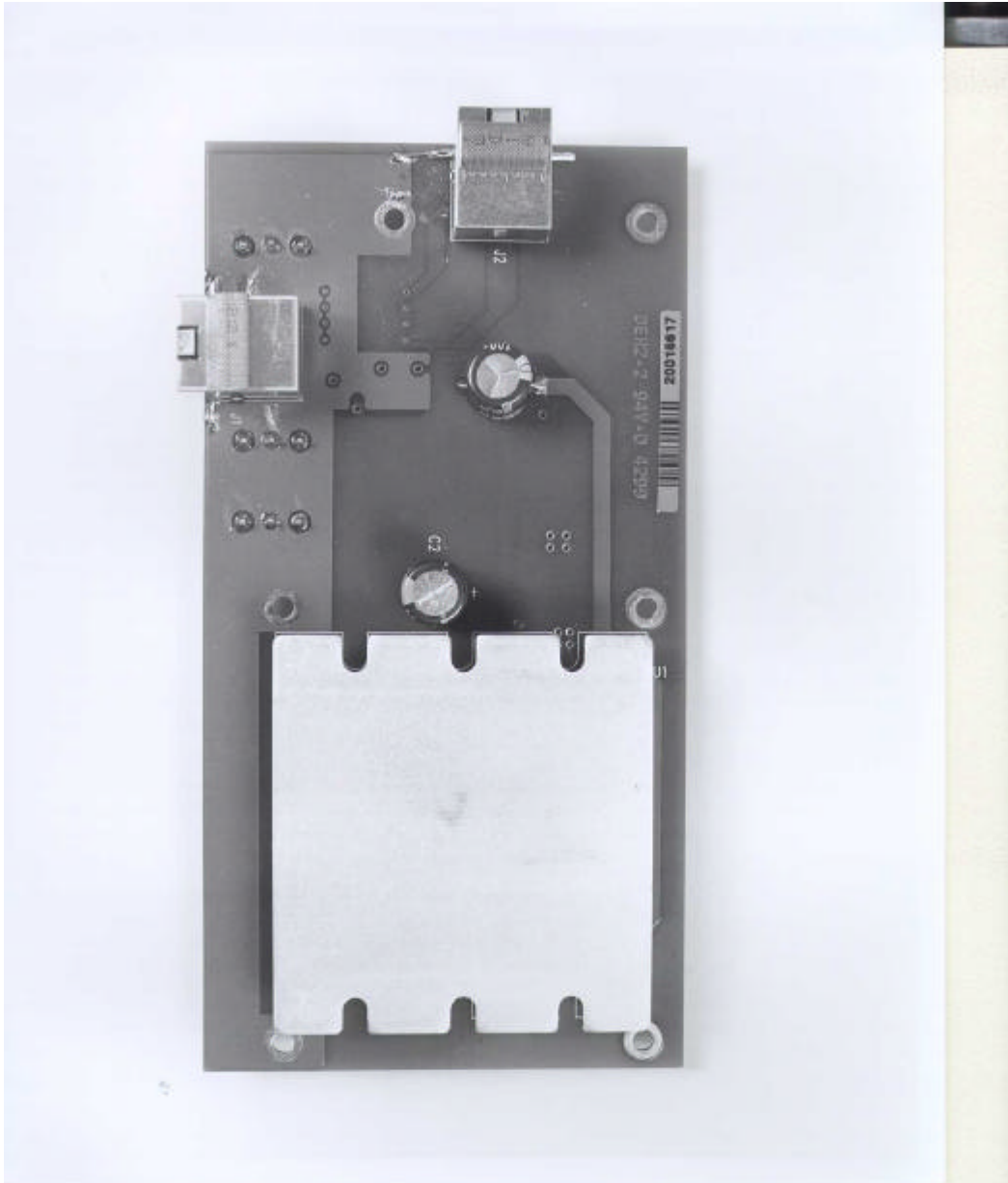


Back of antenna

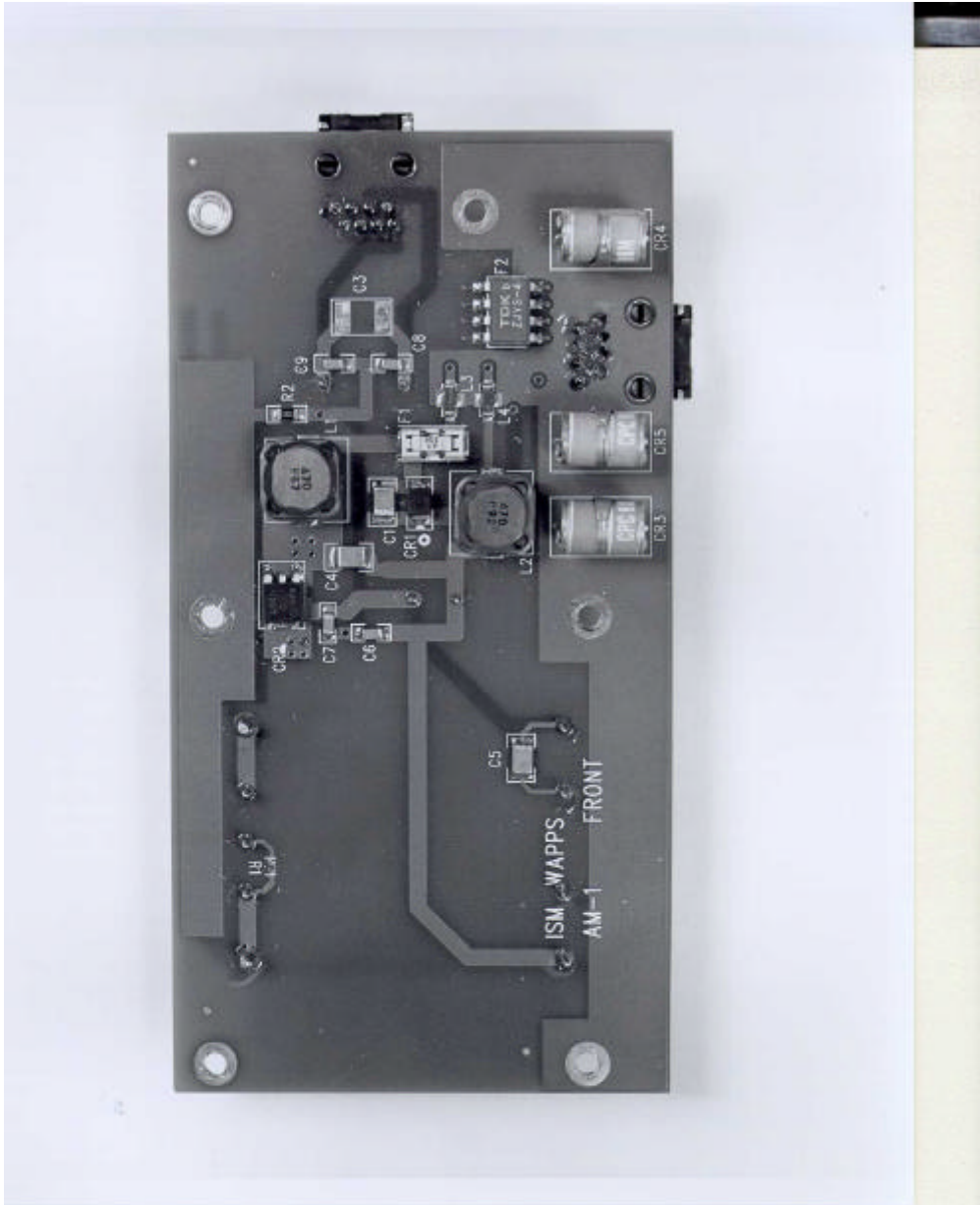
Cover over Radio & MAC pwbs

DC power supply and surge protector pwb.

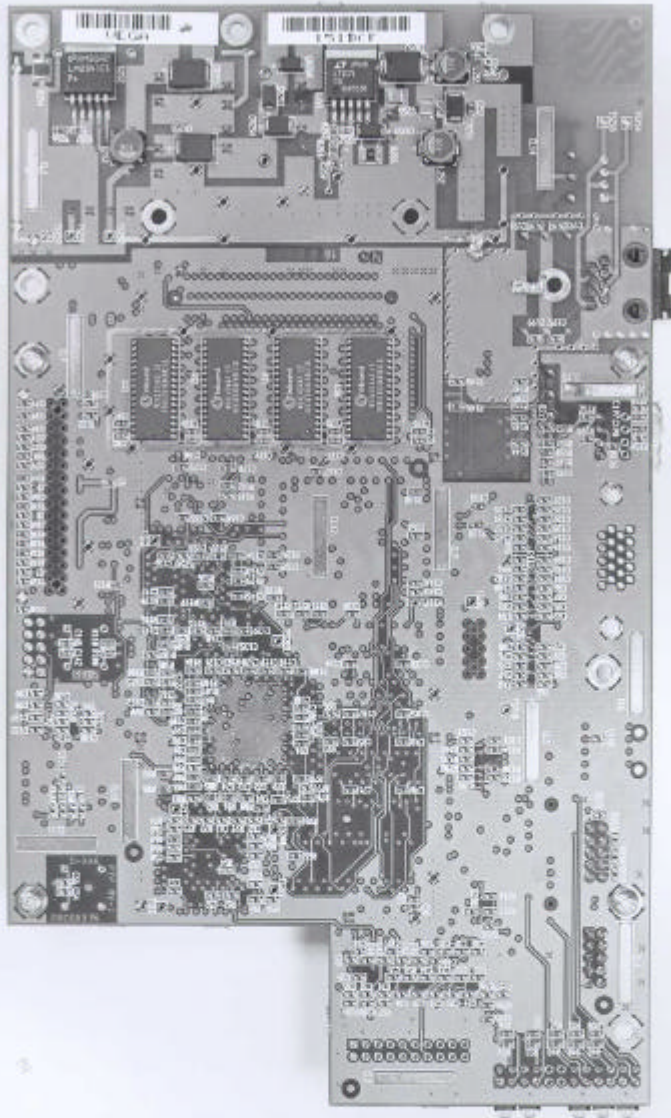
View of: CU232 with antenna unscrewed and placed beside main chassis. One antenna cable is disconnected to enable antenna to be removed from main chassis.



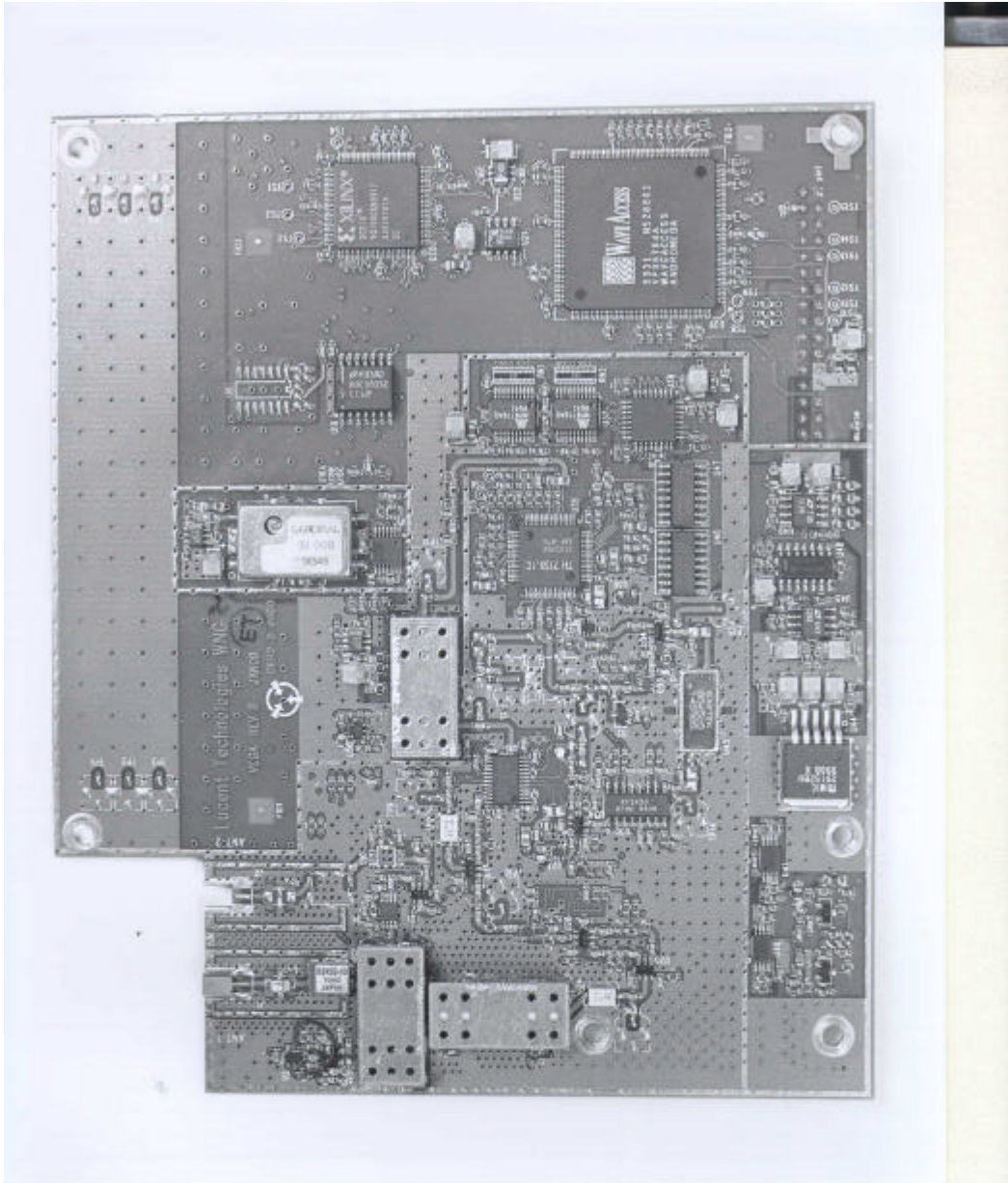
View of: underside of DC power and surge protector pwb.



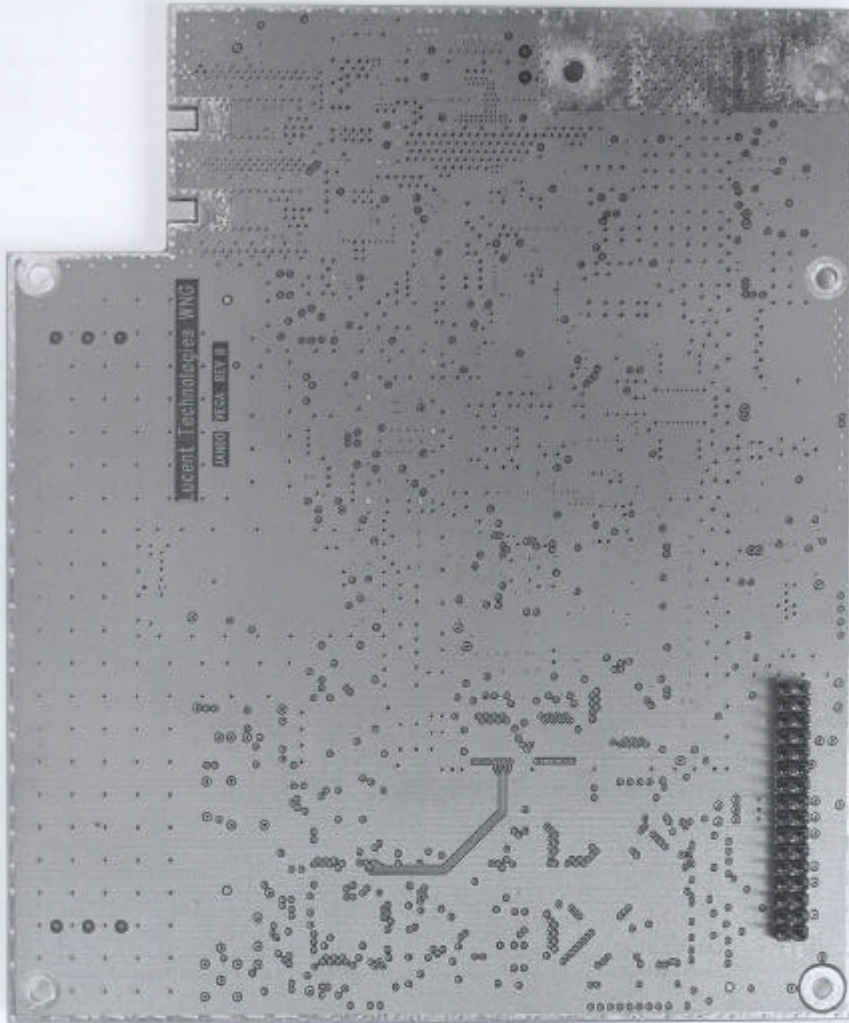
View of: topside of DC power supply and surge protector pwb.



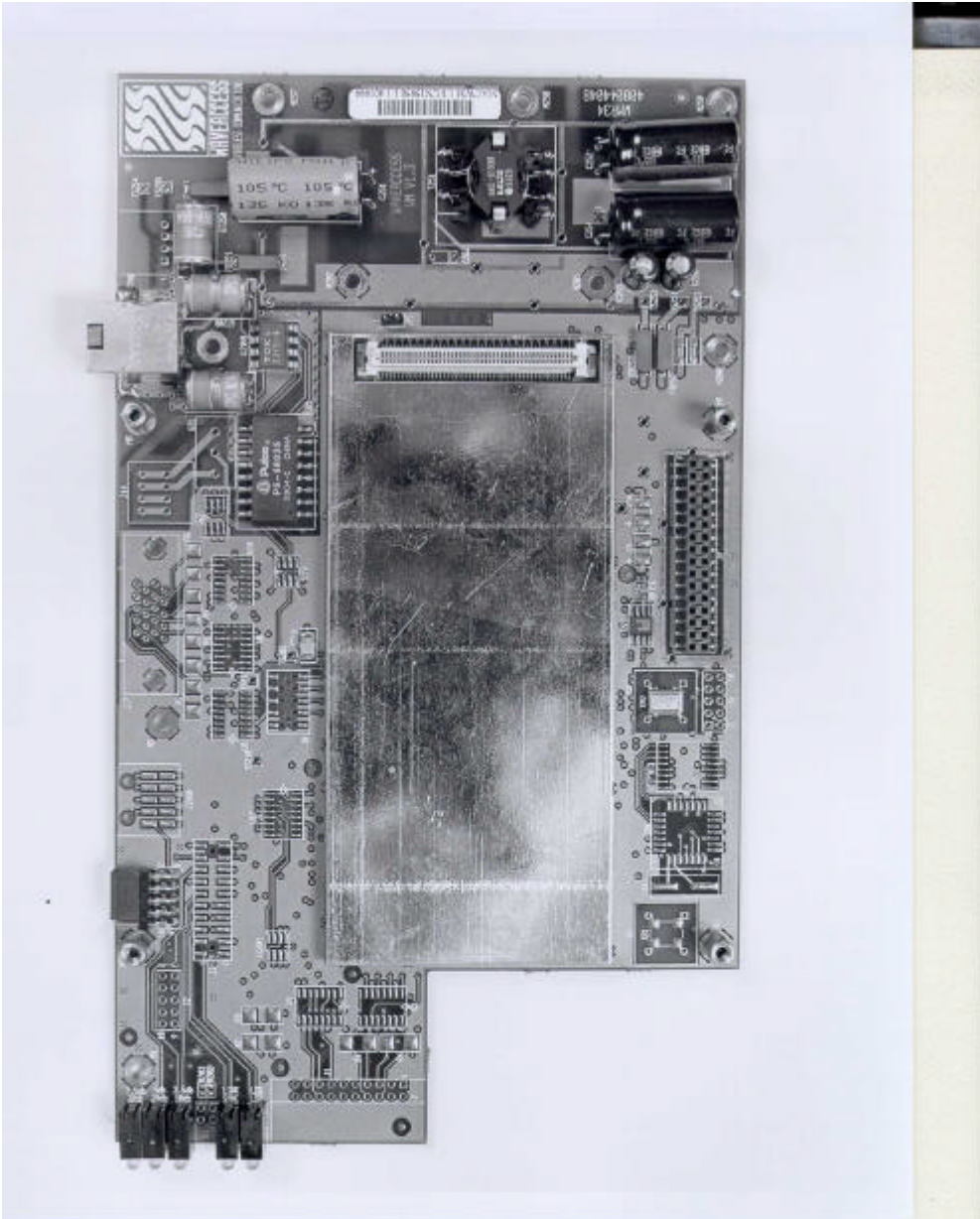
View of: underside of MAC pwb.



View of: topside of Radio pwb.



View of: underside of Radio pwb.

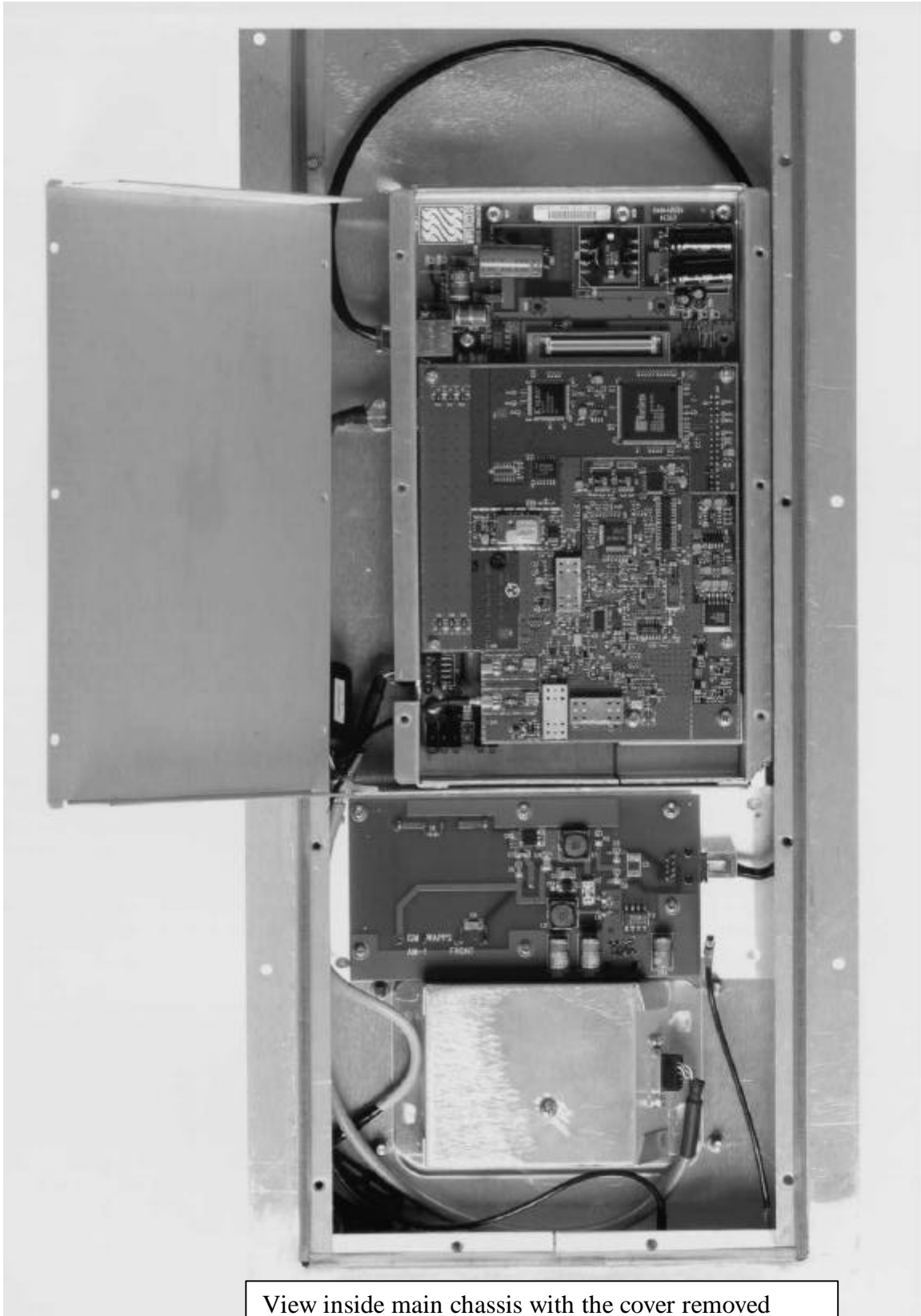


View of: topside of MAC pwb.





**Lucent Technologies – Proprietary**  
Use pursuant to Company Instructions



View inside main chassis with the cover removed from the Radio and MAC enclosure.