

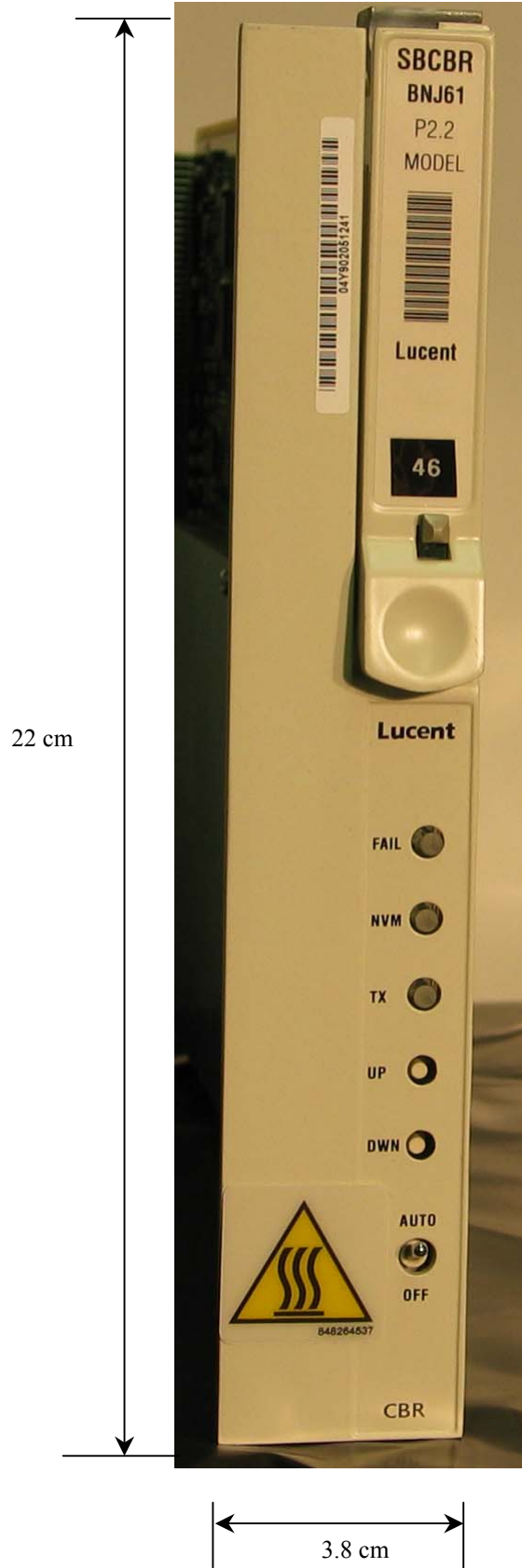
EXHIBIT 9**Section 2.1033 (c)(12) PHOTOGRAPHS OF THE EQUIPMENT**

Photographs (8 x 10) of the equipment of sufficient clarity to reveal equipment construction and layout, including meters, if any, and labels for controls and meters and sufficient views of the internal construction to define component placement and chassis assembly. Insofar as these requirements are met by photographs or drawings contained in instruction manuals supplied with the certification request, additional photographs are necessary only to complete the required showing.

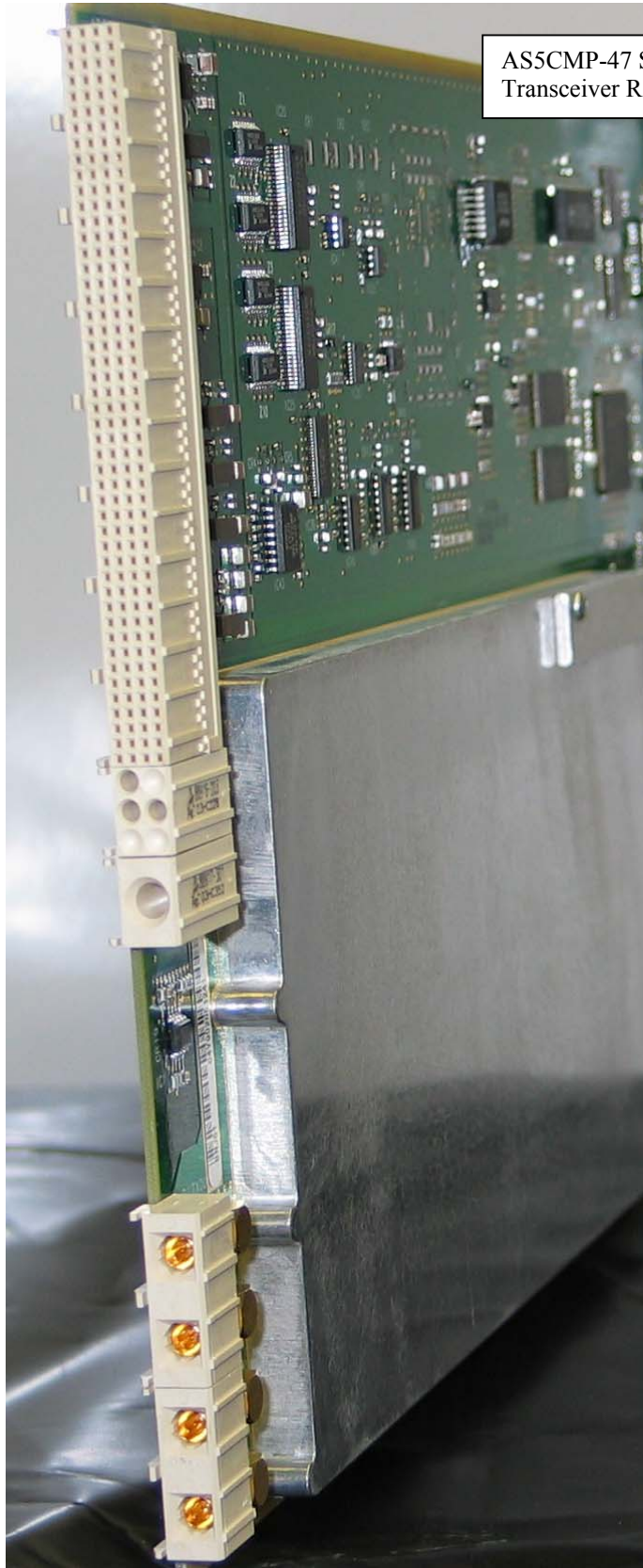
Response

The following pages contain the required photographs of the AS5CMP-47 SBCBR transceiver, subject of this application, showing the board layout and component placement. Seven photos in total were submitted, which include:

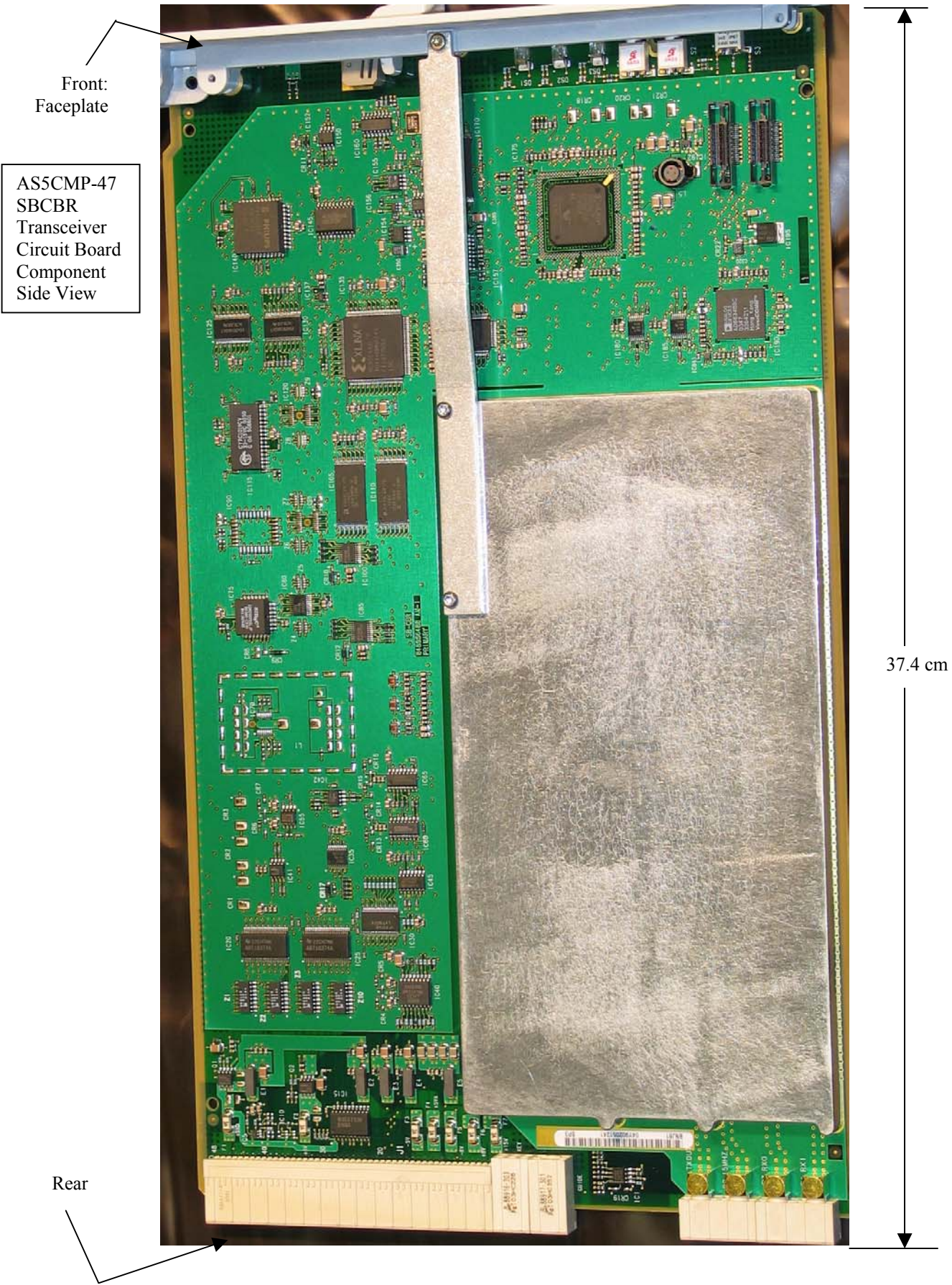
- 1) Front View of SBCBR,
- 2) Rear View of SBCBR,
- 3) Circuit Board Component Side View of SBCBR,
- 4) Circuit Board Wiring Side View of SBCBR,
- 5) Circuit Board Component Side View with Shielding Cover Removed and
- 6) Front View of 1900 Modular Cell 3.0 with Door Open.

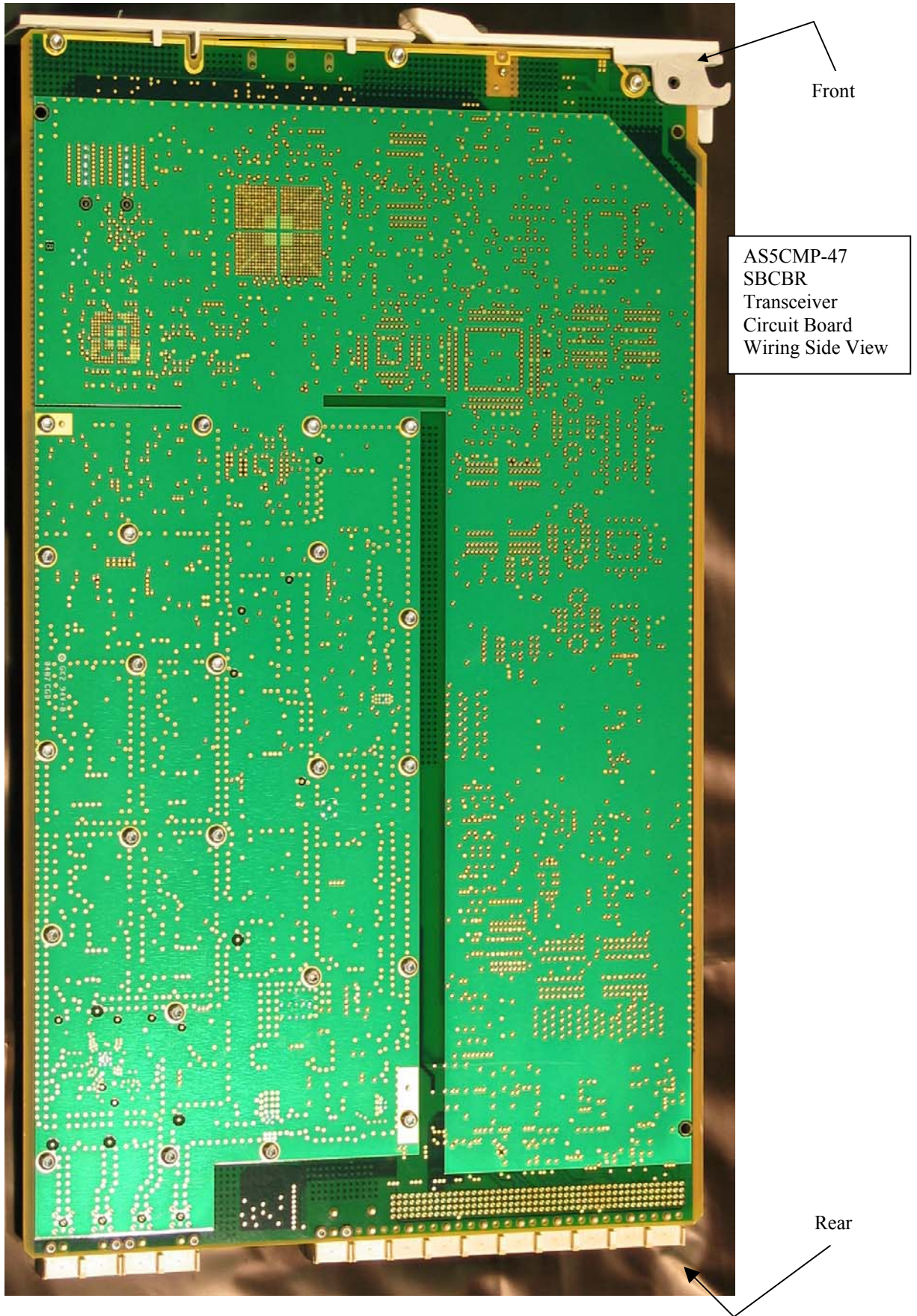


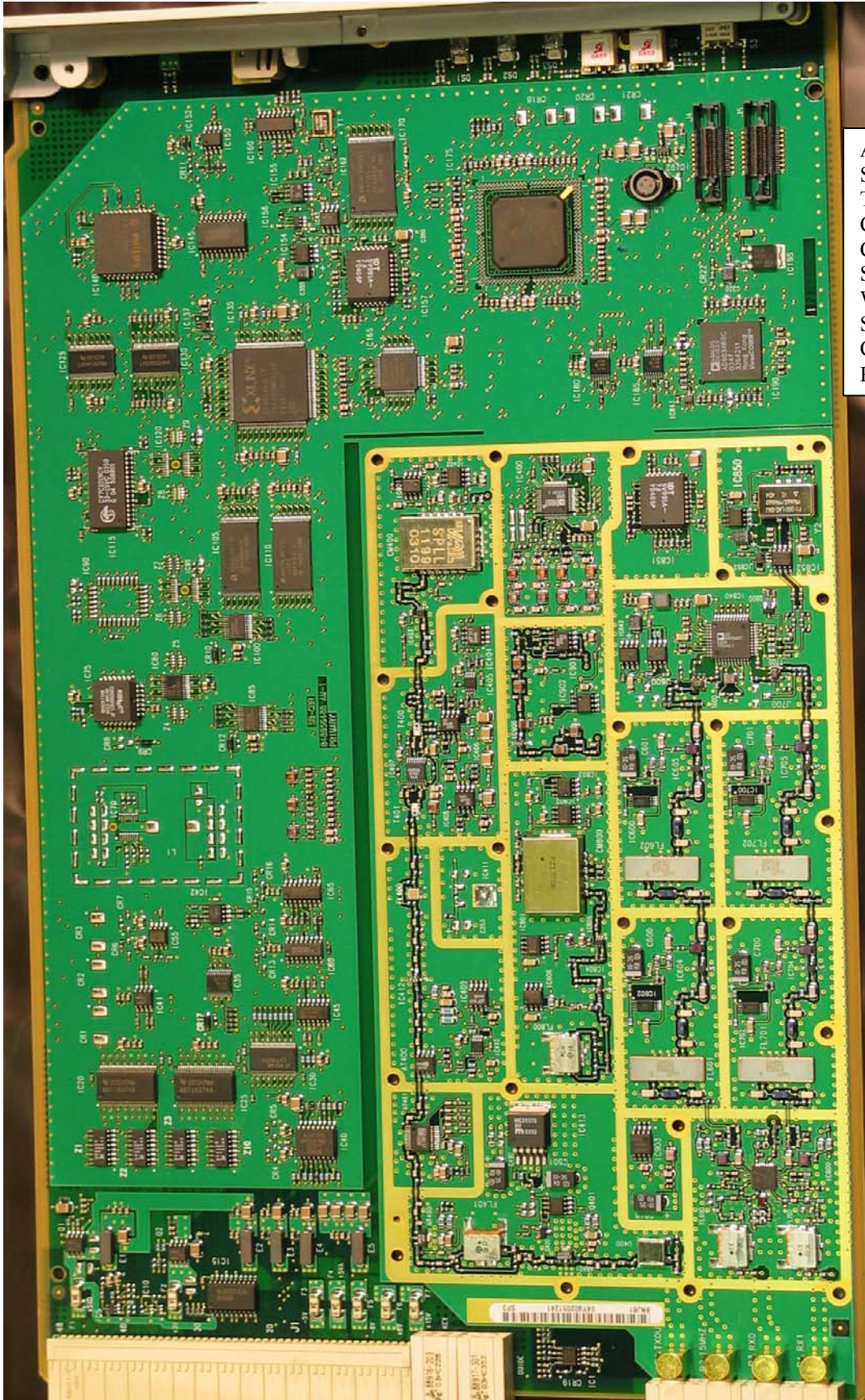
AS5CMP-47 SBCBR
Transceiver Front View



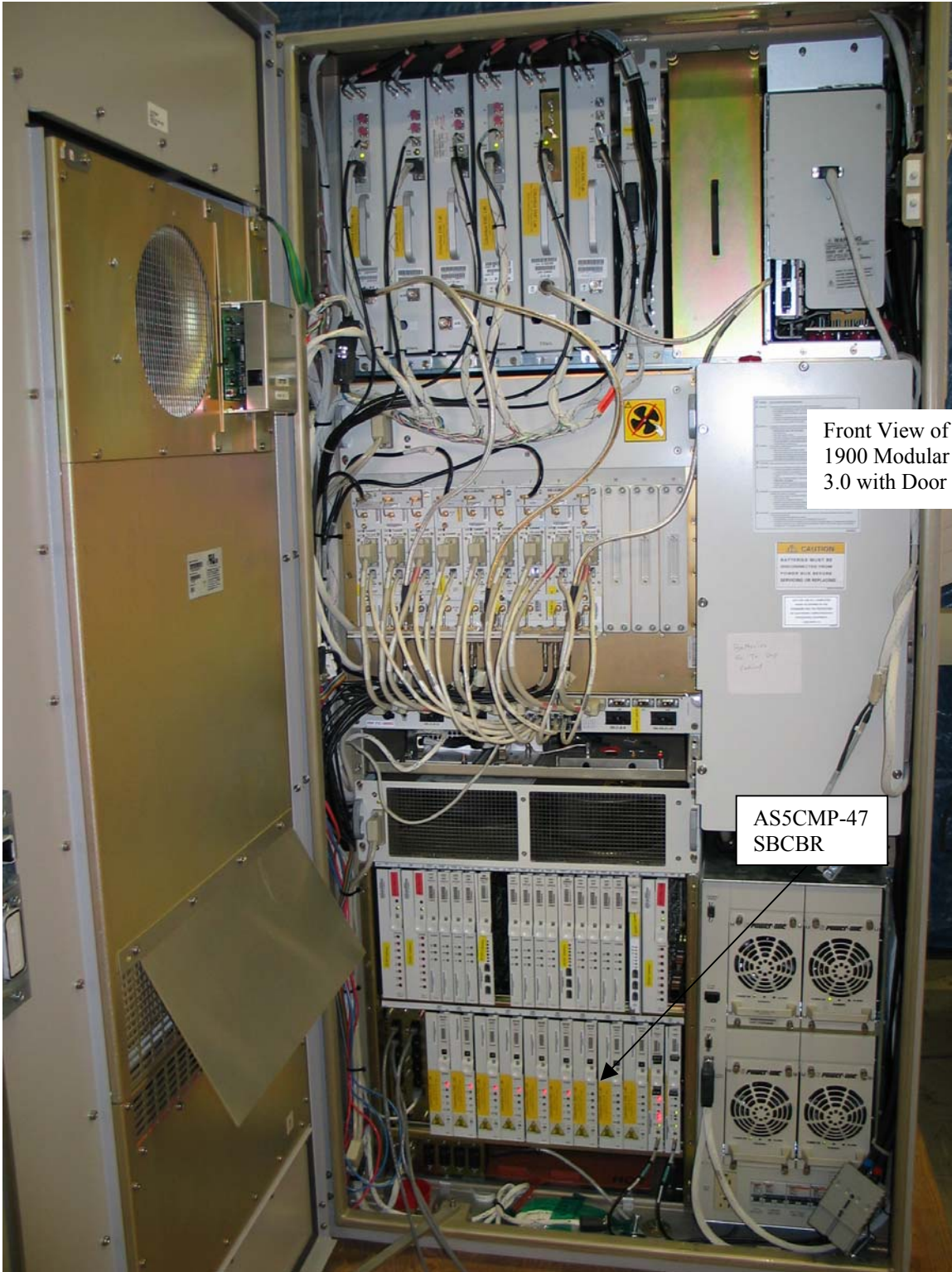
AS5CMP-47 SBCBR
Transceiver Rear View







AS5CMP-47
SBCBR
Transceiver
Circuit Board
Component
Side View
With
Shielding
Cover
Removed



Front View of Flexent 1900 Modular Cell 3.0 with Door Open

AS5CMP-47 SBCBR