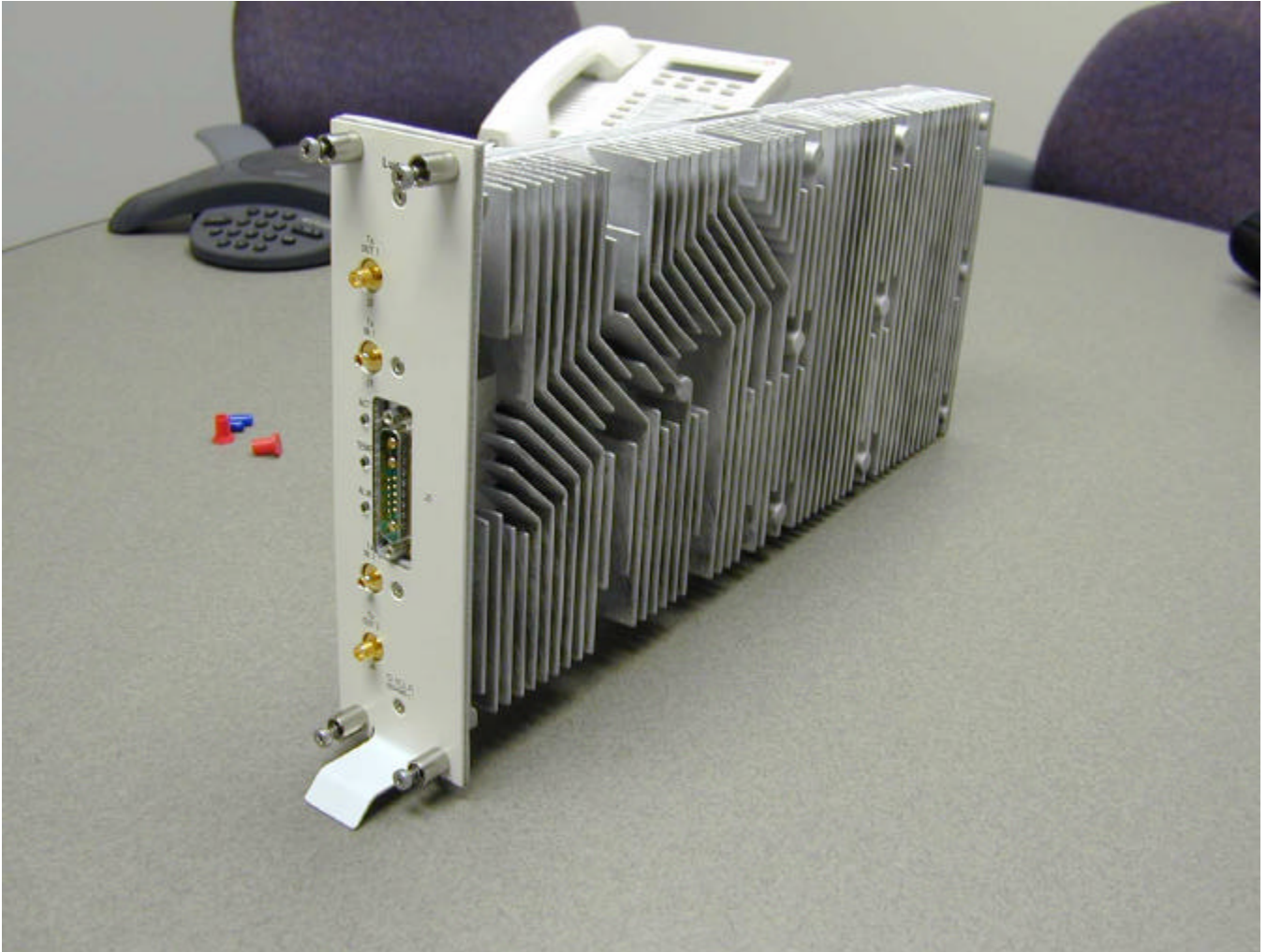


APPLICANT: LUCENT TECHNOLOGIES

FCC ID: AS5CMP-45

EXHIBIT 5: Internal Photographs

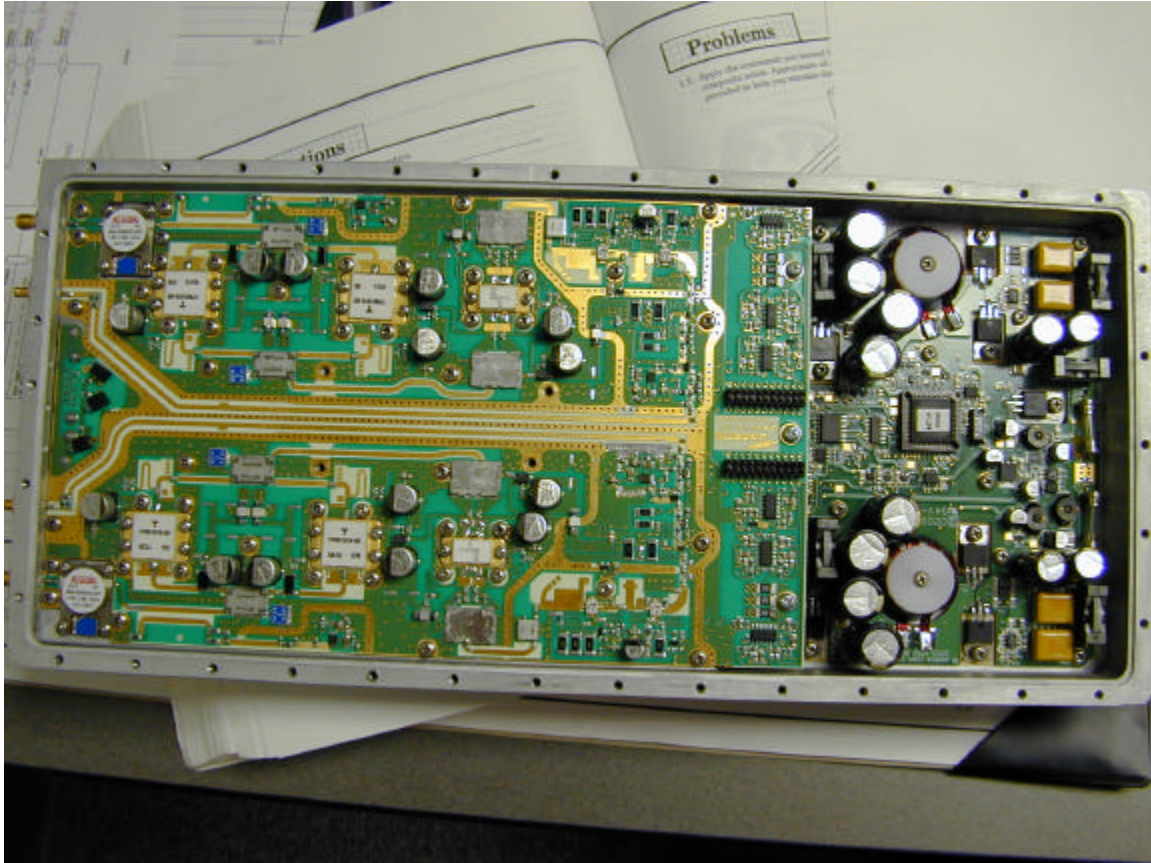


D-ICLA Module Enclosure

APPLICANT: LUCENT TECHNOLOGIES

FCC ID: AS5CMP-45

EXHIBIT 5: Internal Photographs

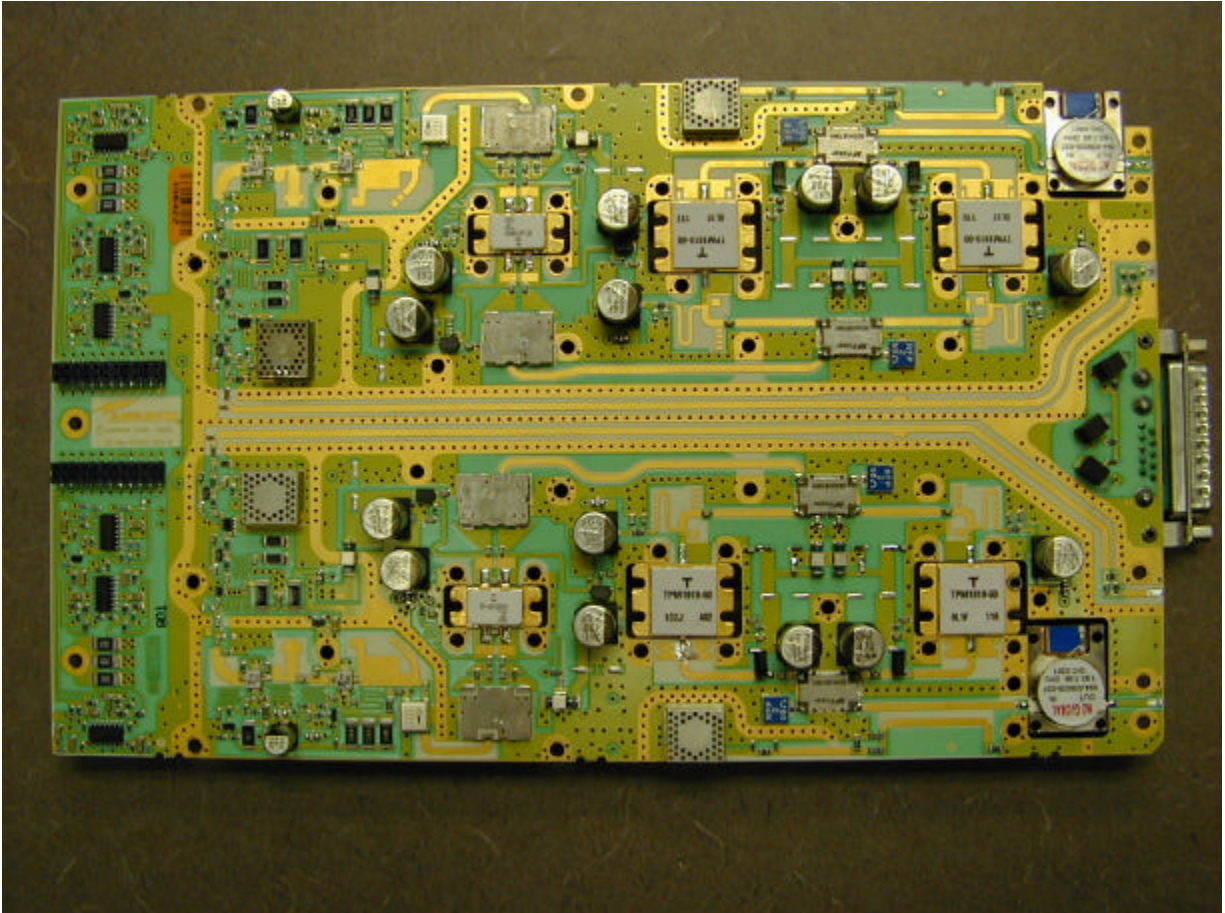


D-ICLA Boards in The Enclosure

APPLICANT: LUCENT TECHNOLOGIES

FCC ID: AS5CMP-45

EXHIBIT 5: Internal Photographs

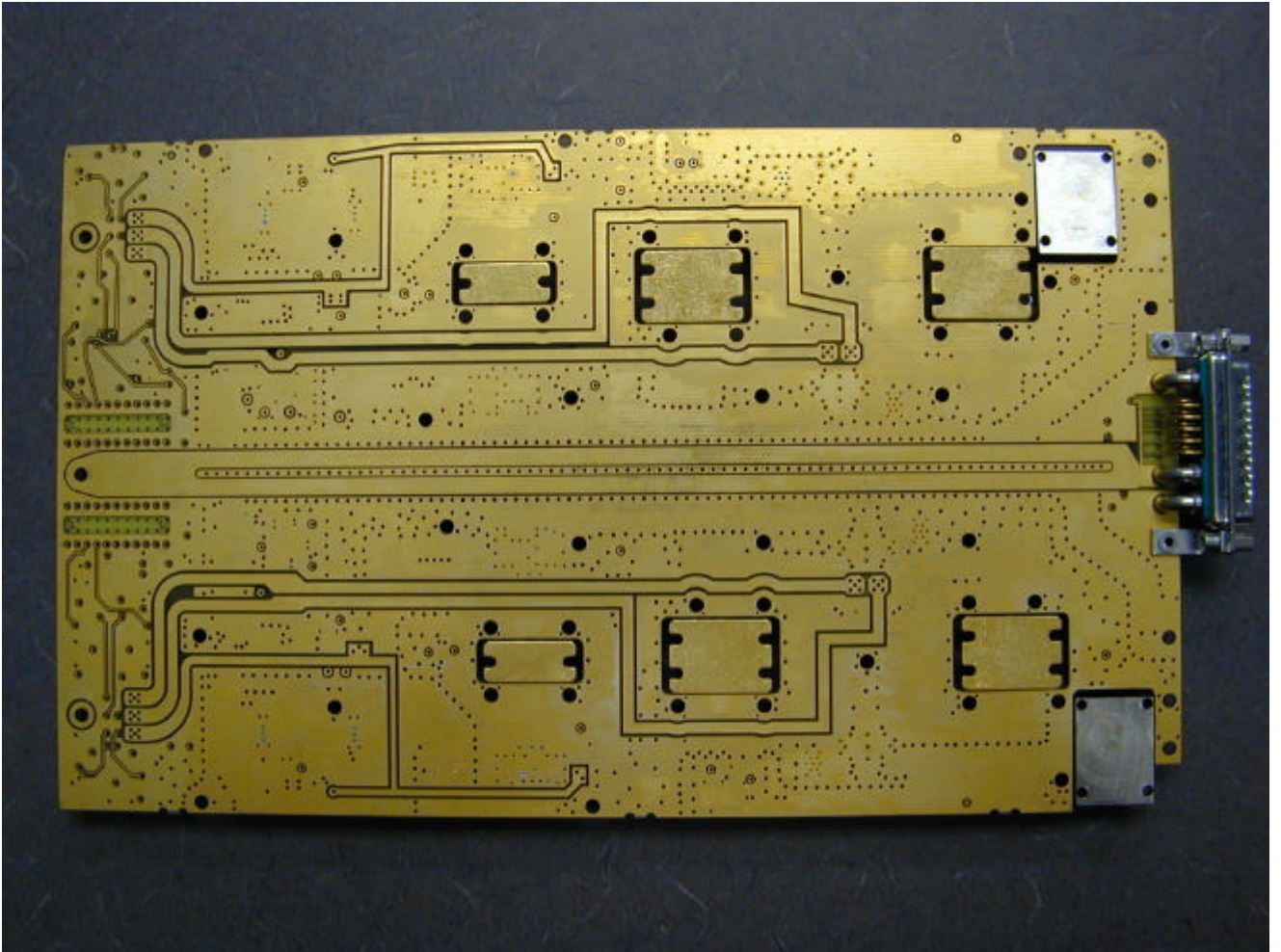


D-ICLA RF Board Top Side

APPLICANT: LUCENT TECHNOLOGIES

FCC ID: AS5CMP-45

EXHIBIT 5: Internal Photographs

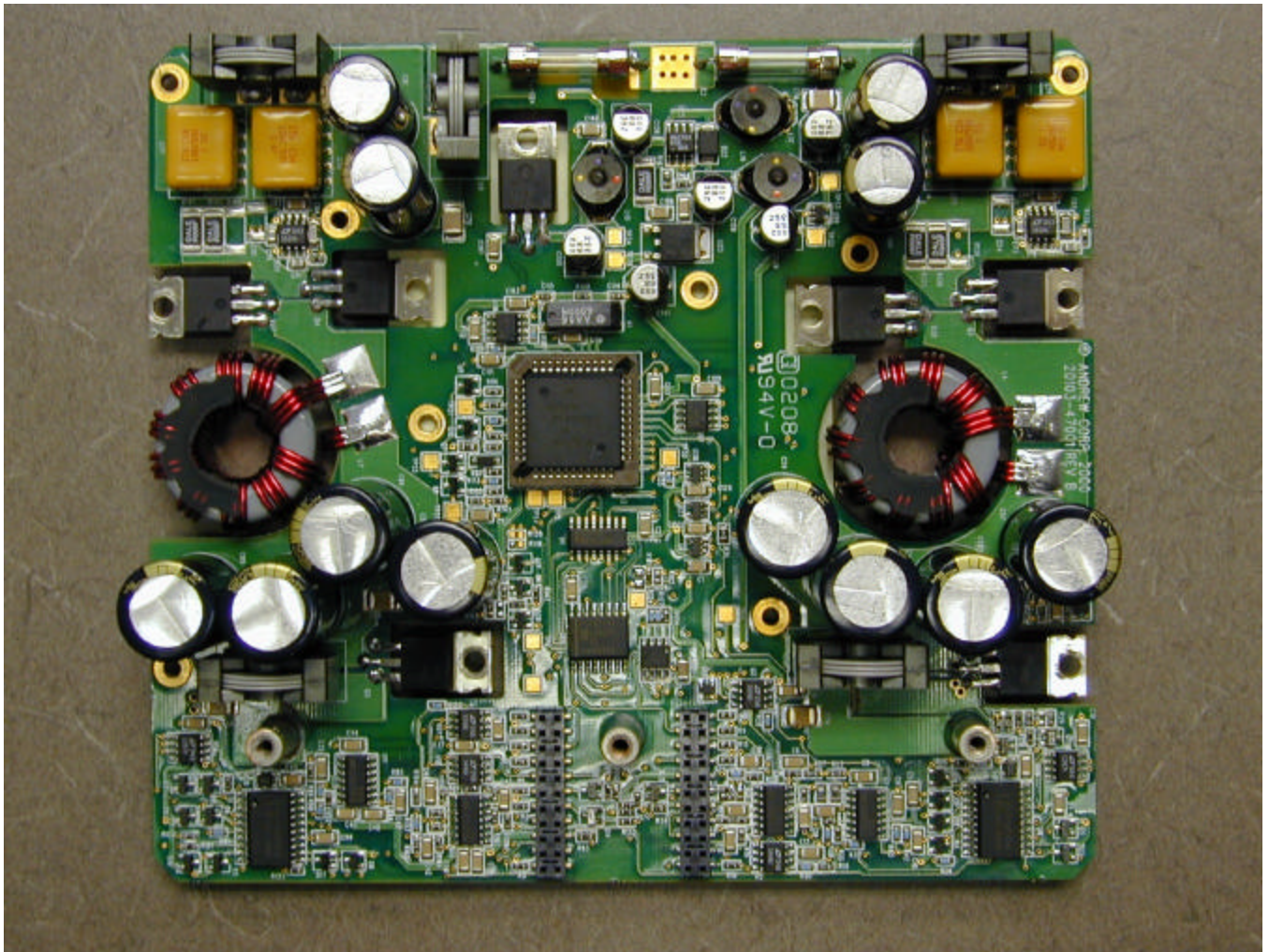


D-ICLA RF Board Back Side

APPLICANT: LUCENT TECHNOLOGIES

FCC ID: AS5CMP-45

EXHIBIT 5: Internal Photographs

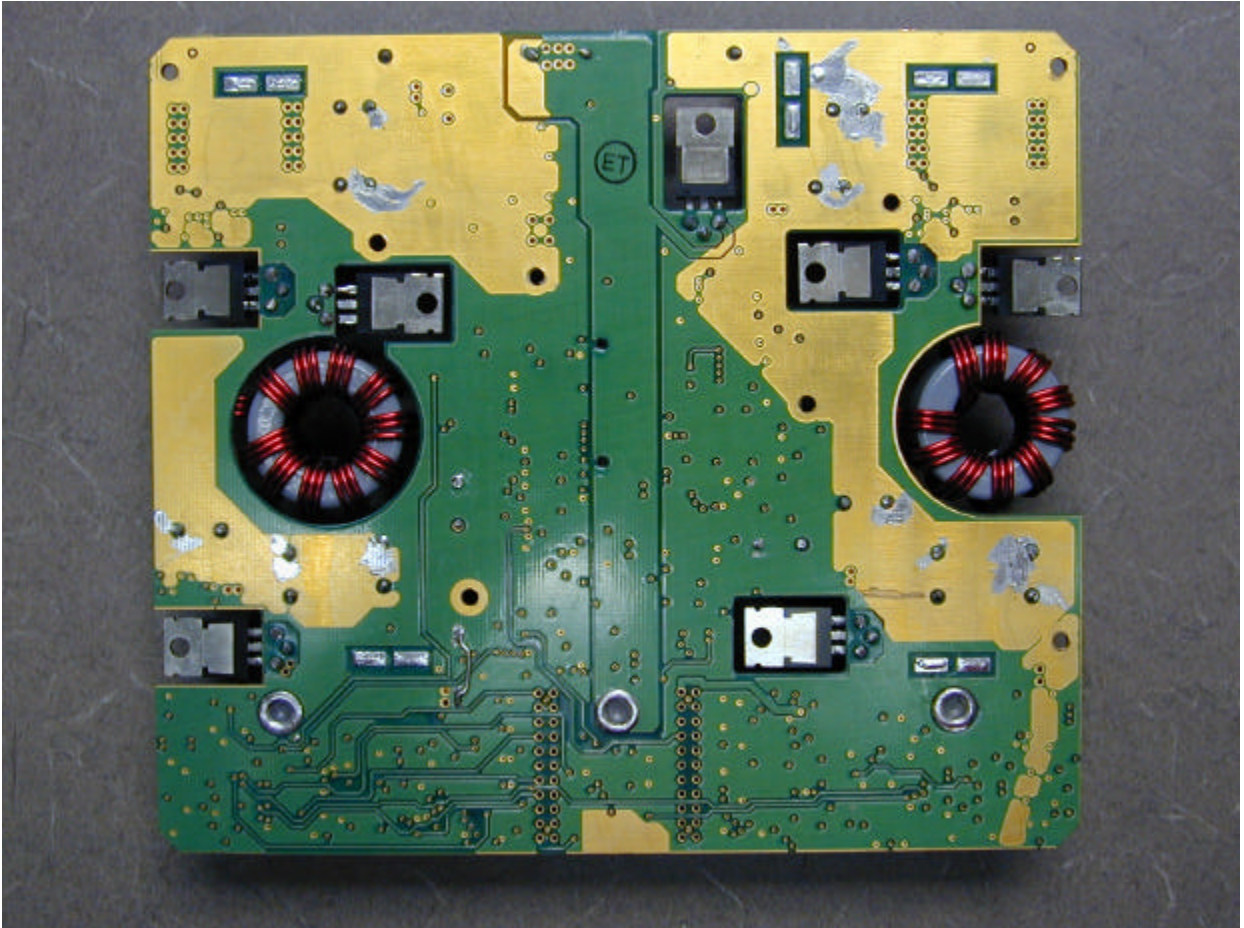


D-ICLA Power Supply Board Top Side

APPLICANT: LUCENT TECHNOLOGIES

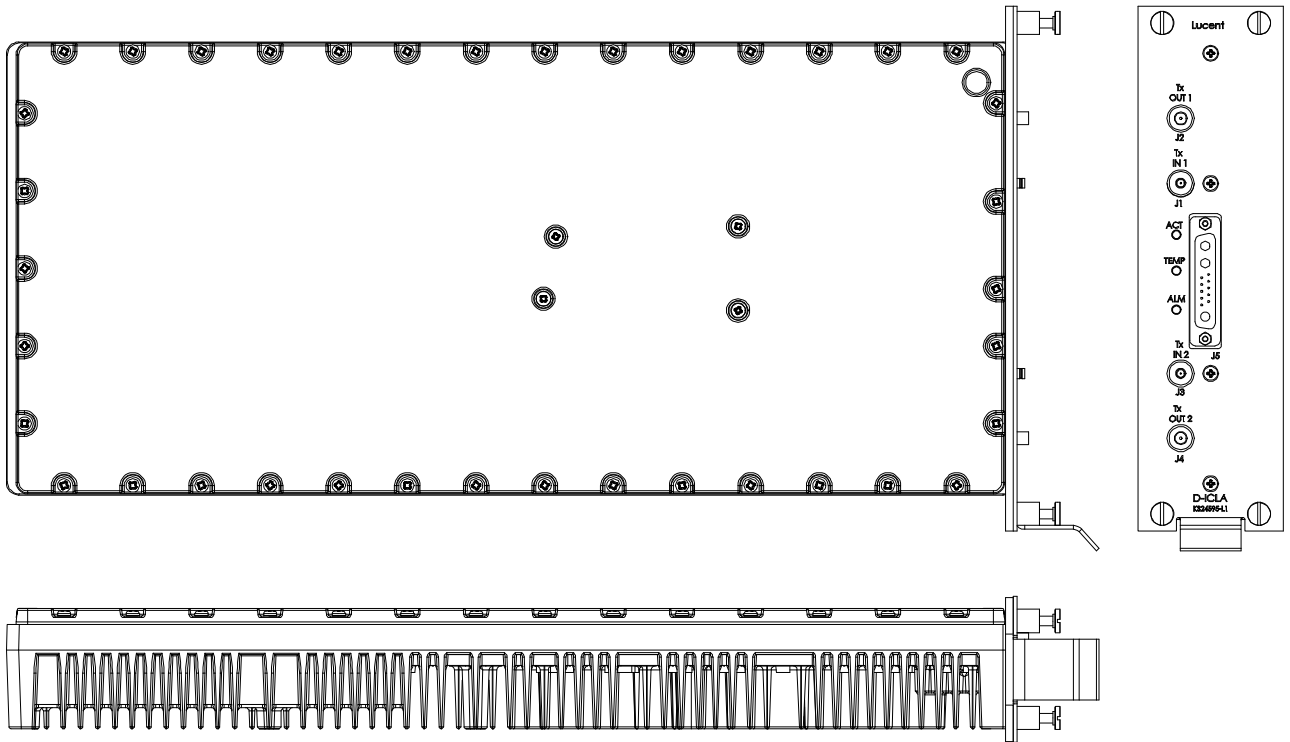
FCC ID: AS5CMP-45

EXHIBIT 5: Internal Photographs



D-ICLA power Supply Board Back Side

EXHIBIT 5: Internal Photographs



FCC Submission:
Andrew Corporation, AYP
KS-24595 Top Assembly drawing
DLCronin, Tech Prog. Mgr.
05/16/01