

**APPLICANT: LUCENT TECHNOLOGIES**

**FCC ID: AS5CMP-39**

**EXHIBIT 4: EXTERNAL PHOTOGRAPHS**

AUTOPLEX™ System 1000, Series II, PCS TDMA Minicell, J41683A-1, Base Station Equipment

View: Front and Left Side of Primary Frame,  
showing DC supply voltage input

Nominal Dimensions: 67 " (170 cm) H x 28" (71 cm) W x 24 " (61 cm) D



**APPLICANT: LUCENT TECHNOLOGIES**

**FCC ID: AS5CMP-39**

**EXHIBIT 4: EXTERNAL PHOTOGRAPHS**

AUTOPLEX™ System 1000, Series II, PCS TDMA Minicell, J41683A-1, Base Station Equipment

View: Front and Right Side of Primary Frame

Nominal Dimensions: 67 " (170 cm) H x 28" (71 cm) W x 24 " (61 cm) D



**APPLICANT: LUCENT TECHNOLOGIES**

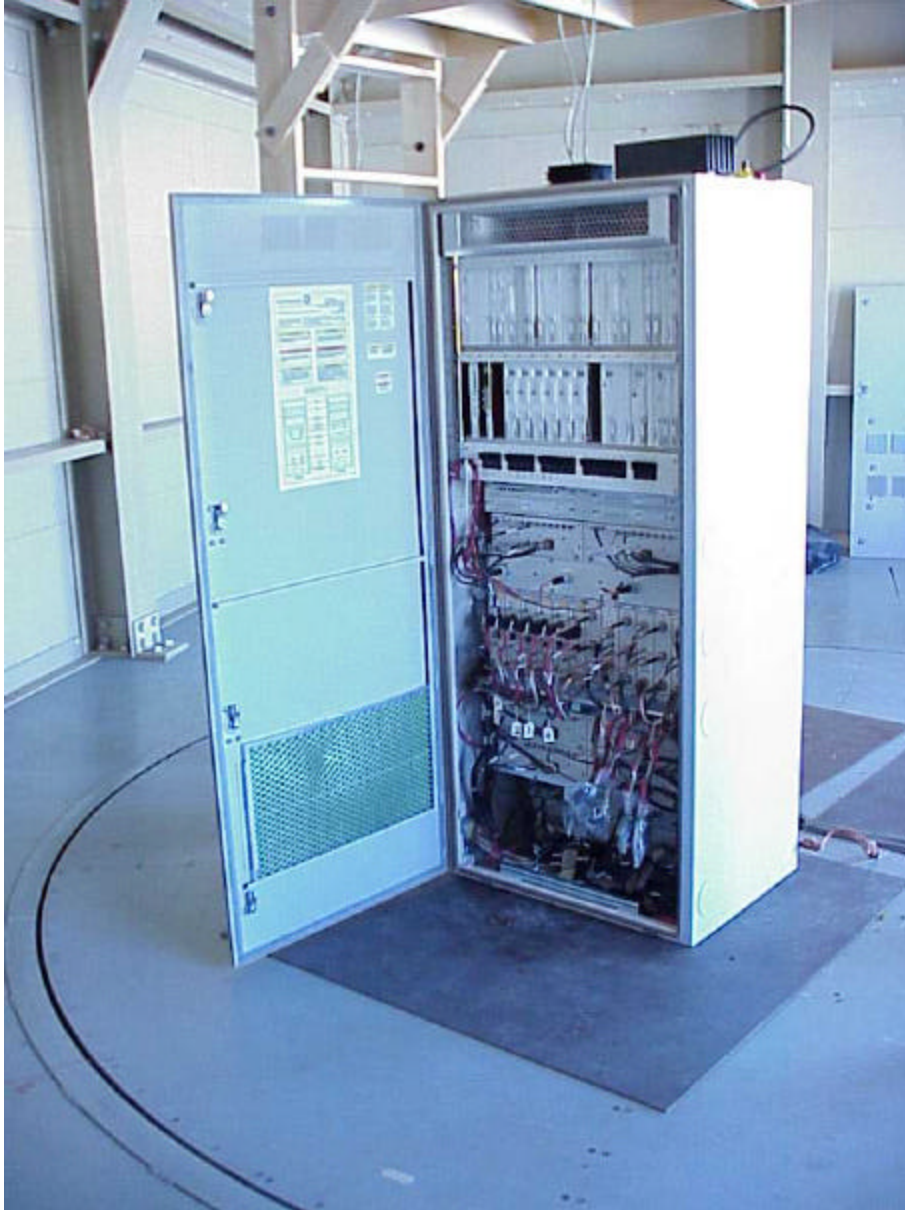
**FCC ID: AS5CMP-39**

**EXHIBIT 4: EXTERNAL PHOTOGRAPHS**

AUTOPLEX™ System 1000, Series II, PCS TDMA Minicell, J41683A-1, Base Station Equipment

View: Front and Right Side of Primary Frame,  
with door open to show interior configuration.

Nominal Dimensions: 67 " (170 cm) H x 28" (71 cm) W x 24 " (61 cm) D



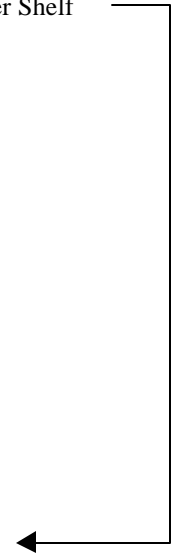
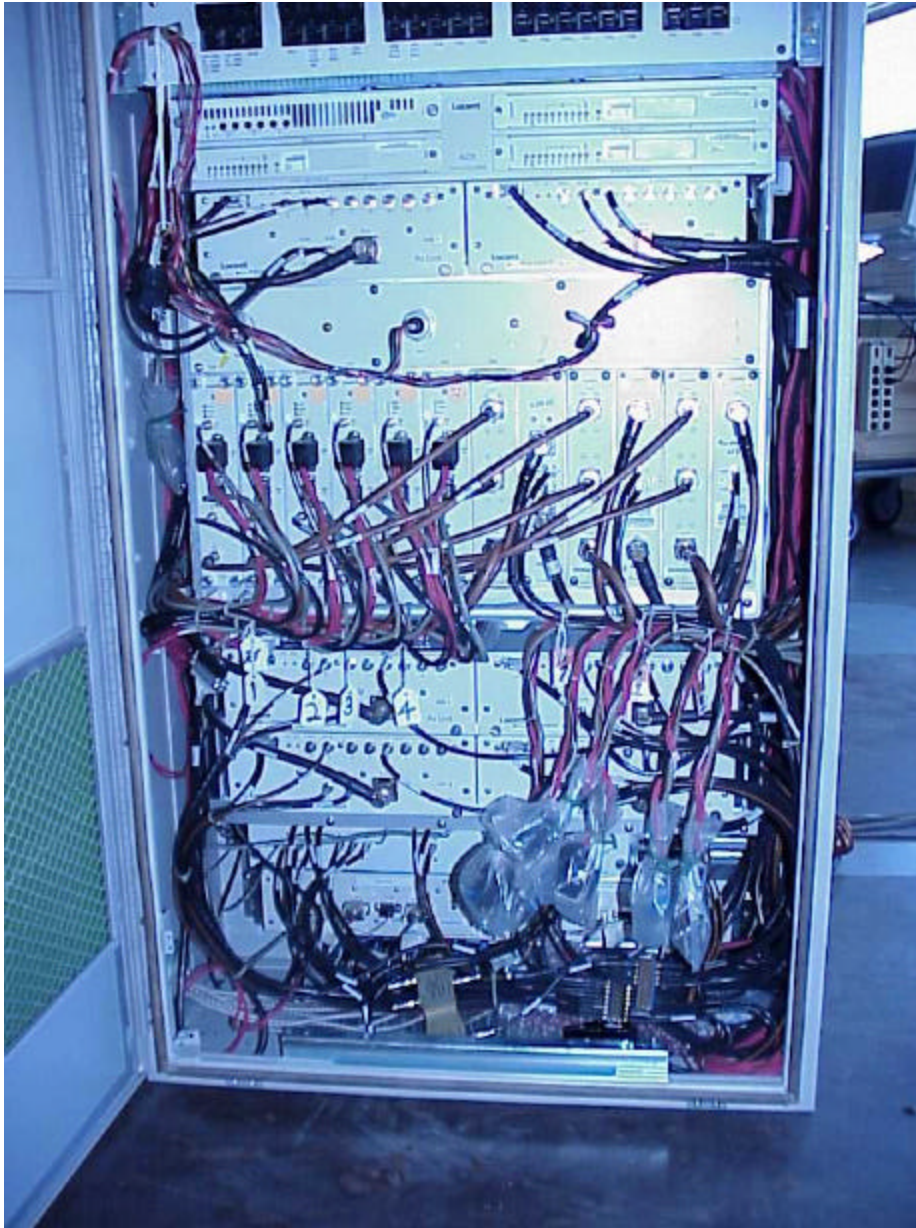
**APPLICANT: LUCENT TECHNOLOGIES**

**FCC ID: AS5CMP-39**

**EXHIBIT 4: EXTERNAL PHOTOGRAPHS**

AUTOPLEX™ System 1000, Series II, PCS TDMA Minicell, J41683A-1, Base Station Equipment

View: Front Close-up of Lower Half of Primary Frame  
Showing TTU Amplifier, 2:1 Combiner and Band Pass Transmit Filter Shelf



**APPLICANT: LUCENT TECHNOLOGIES**

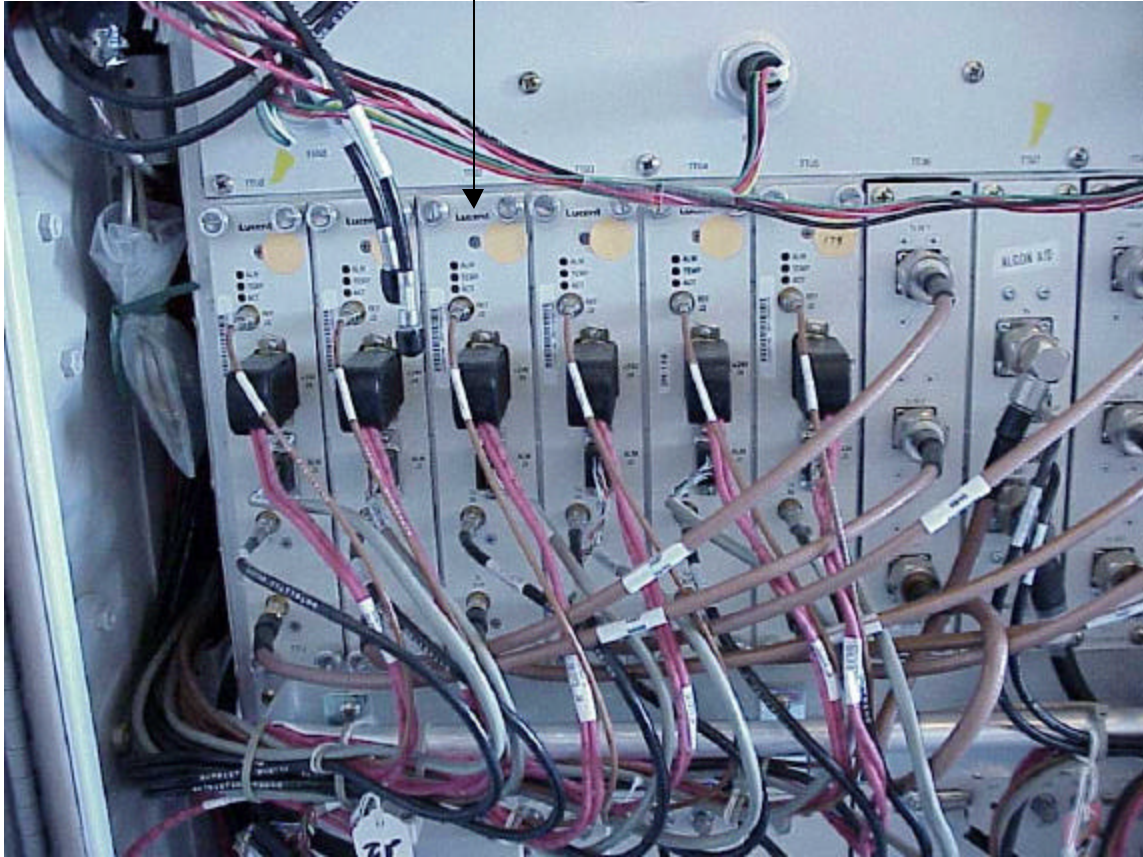
**FCC ID: AS5CMP-39**

**EXHIBIT 4: EXTERNAL PHOTOGRAPHS**

AUTOPLEX™ System 1000, Series II, PCS TDMA Minicell, J41683A-1, Base Station Equipment

View: Front Close-up of PCS TDMA Transmit Units (TTU); FCC ID: AS5CMP-39

6 TTUs/Primary Frame



**APPLICANT: LUCENT TECHNOLOGIES**

**FCC ID: AS5CMP-39**

**EXHIBIT 4: EXTERNAL PHOTOGRAPHS**

AUTOPLEX™ System 1000, Series II, PCS TDMA Minicell, J41683A-1, Base Station Equipment

View: Rear of Primary Frame, showing transmit and receive antenna terminals plus alarm and T1 cables.



**APPLICANT: LUCENT TECHNOLOGIES**

**FCC ID: AS5CMP-39**

**EXHIBIT 4: EXTERNAL PHOTOGRAPHS**

AUTOPLEX™ System 1000, Series II, PCS TDMA Minicell, J41683A-1, Base Station Equipment

View: Rear of Primary Frame with door removed to show interior configuration.

