

APPLICANT: Lucent Technologies

FCC ID: AS5CMP-31

EXHIBIT 10

Section 2.1033 (c)(11)

Equipment identification label.

The equipment label to be affixed to the FLEXENT™ PCS-TDMA Multi Carrier Linear Amplifier 44WA28, will contain the following information. The engineering drawing of the label is attached to this exhibit.

Lucent Technologies
FLEXENT PCS MCLA
PART NO: 44WA28
FCC ID: AS5CMP-31

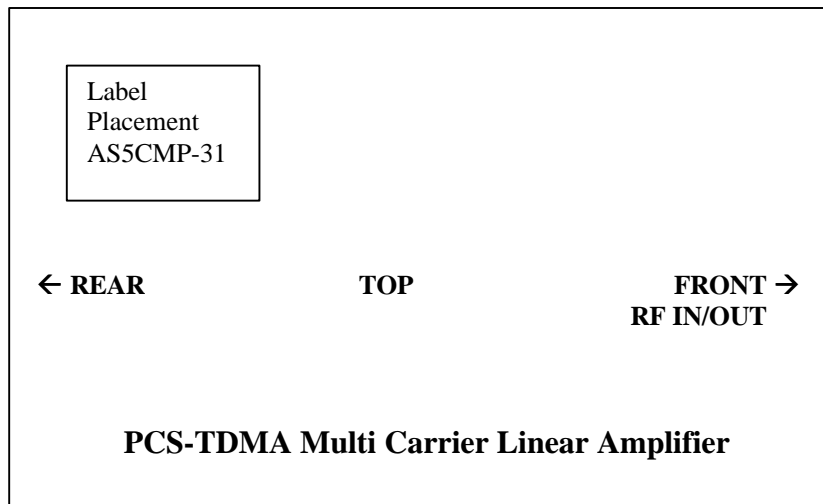


EXHIBIT 10

Engineering Drawing of the equipment label to be displayed on the PCS-TDMA Multi Carrier Linear Amplifier (PMCLA) 44WA28, FCC ID: AS5CMP-31.

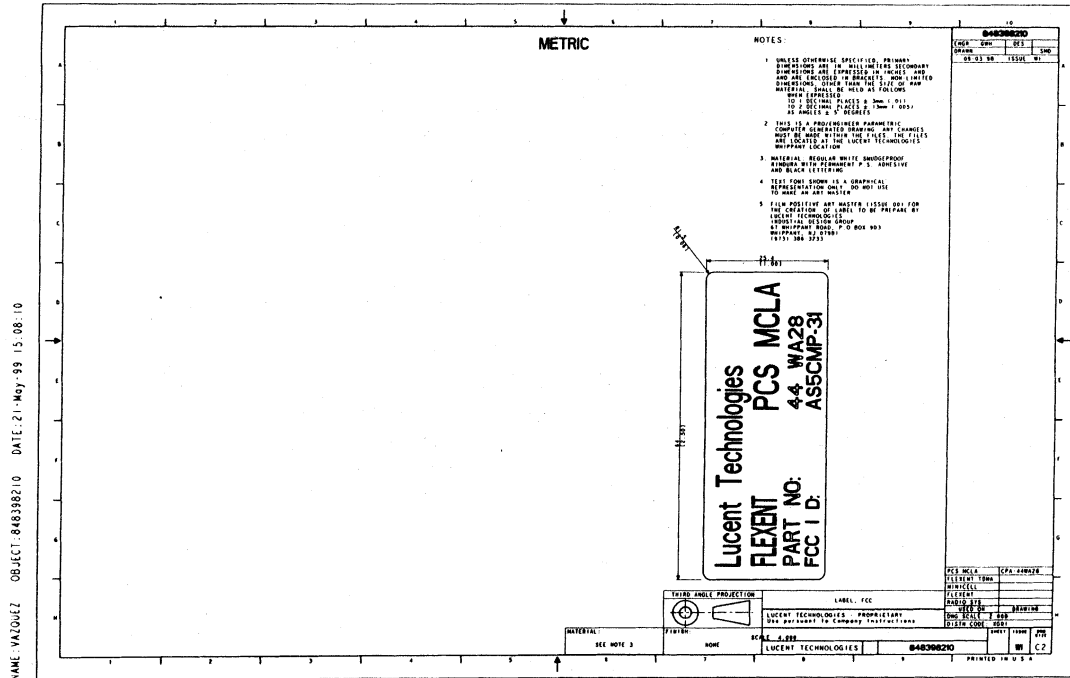


EXHIBIT 10

Section 2.1033 (c)(12): PHOTOGRAPHS OF THE EQUIPMENT.

PCS-TDMA Multi Carrier Linear Amplifier 44WA28: Front (RF IN/OUT) and Top View Showing Label Placement

