

EXHIBIT 9B: INTERNAL PHOTOGRAPHS

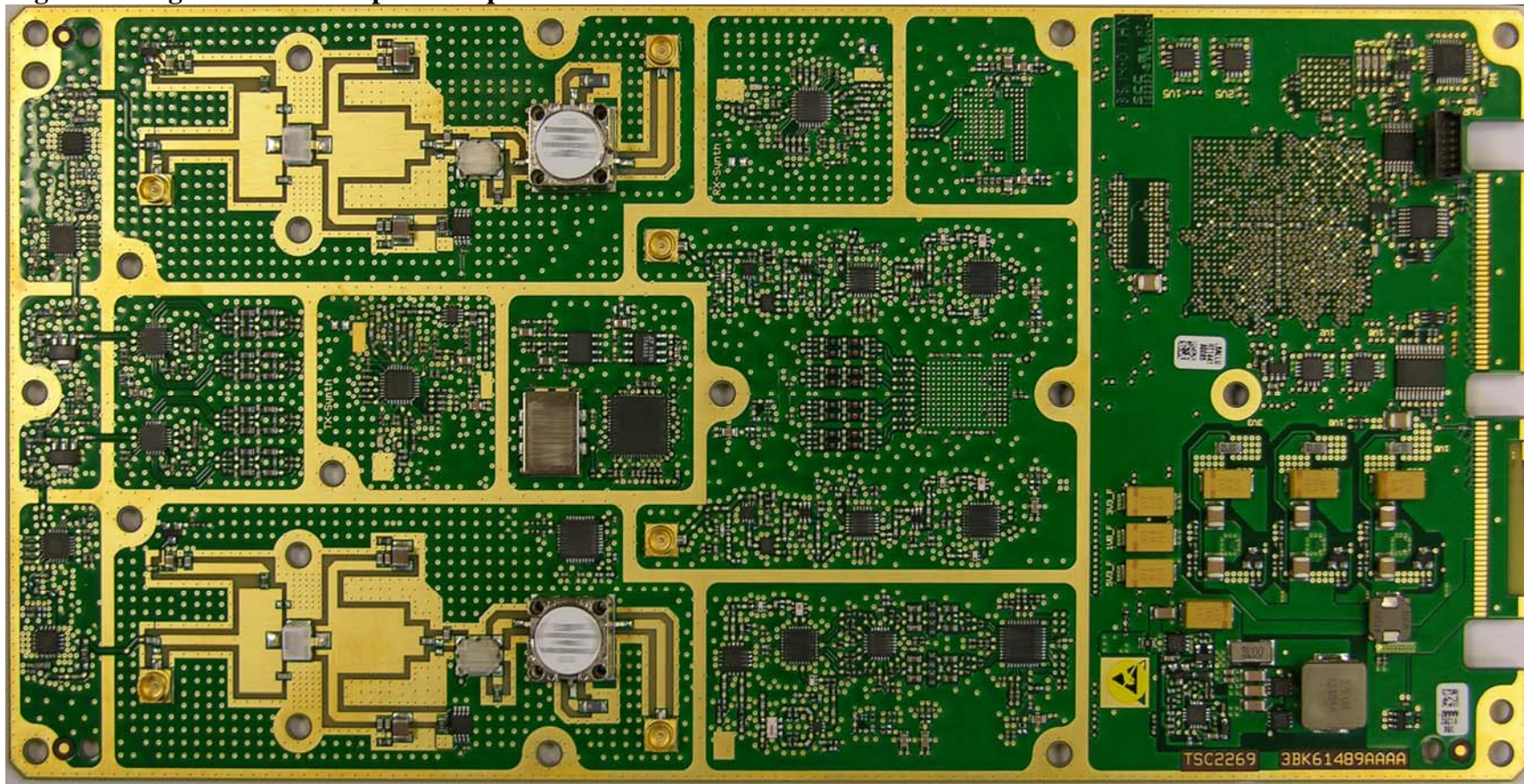
SECTION 2.1033 (c) (12)

Photographs (8"x10") of the equipment of sufficient clarity to reveal equipment construction and layout, including meters, if any, and labels for controls and meters and sufficient views of the internal construction to define component placement and chassis assembly. Insofar as these requirements are met by photographs or drawings contained in the instruction manuals supplied with the product certification request, additional photographs are necessary only to complete the required showing.

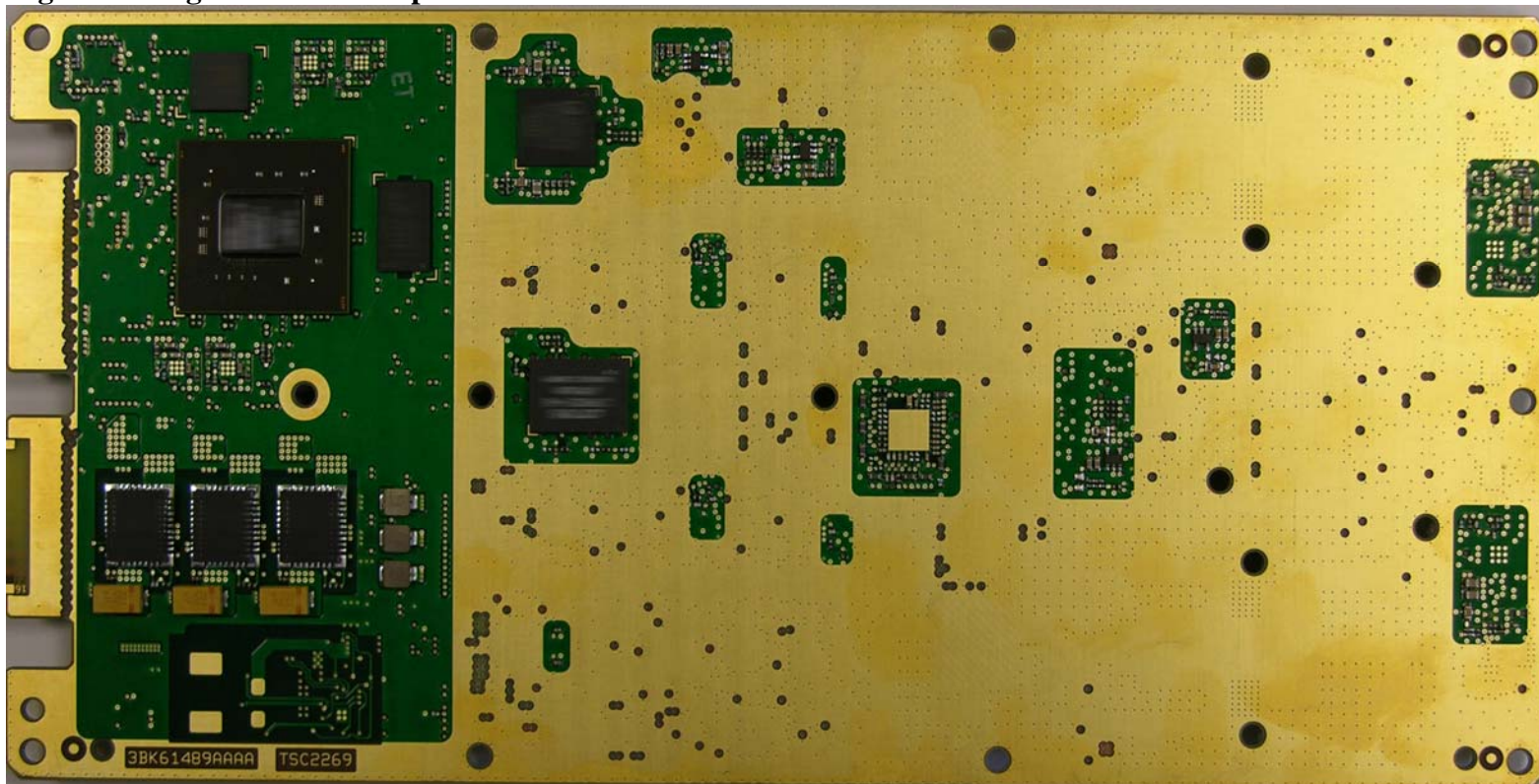
Response:

The internal photographs of the **Alcatel-Lucent's PCS LTE 9764 Metro Cell Outdoor Transceiver System FCC ID: AS5BBTRX-21** are attached.

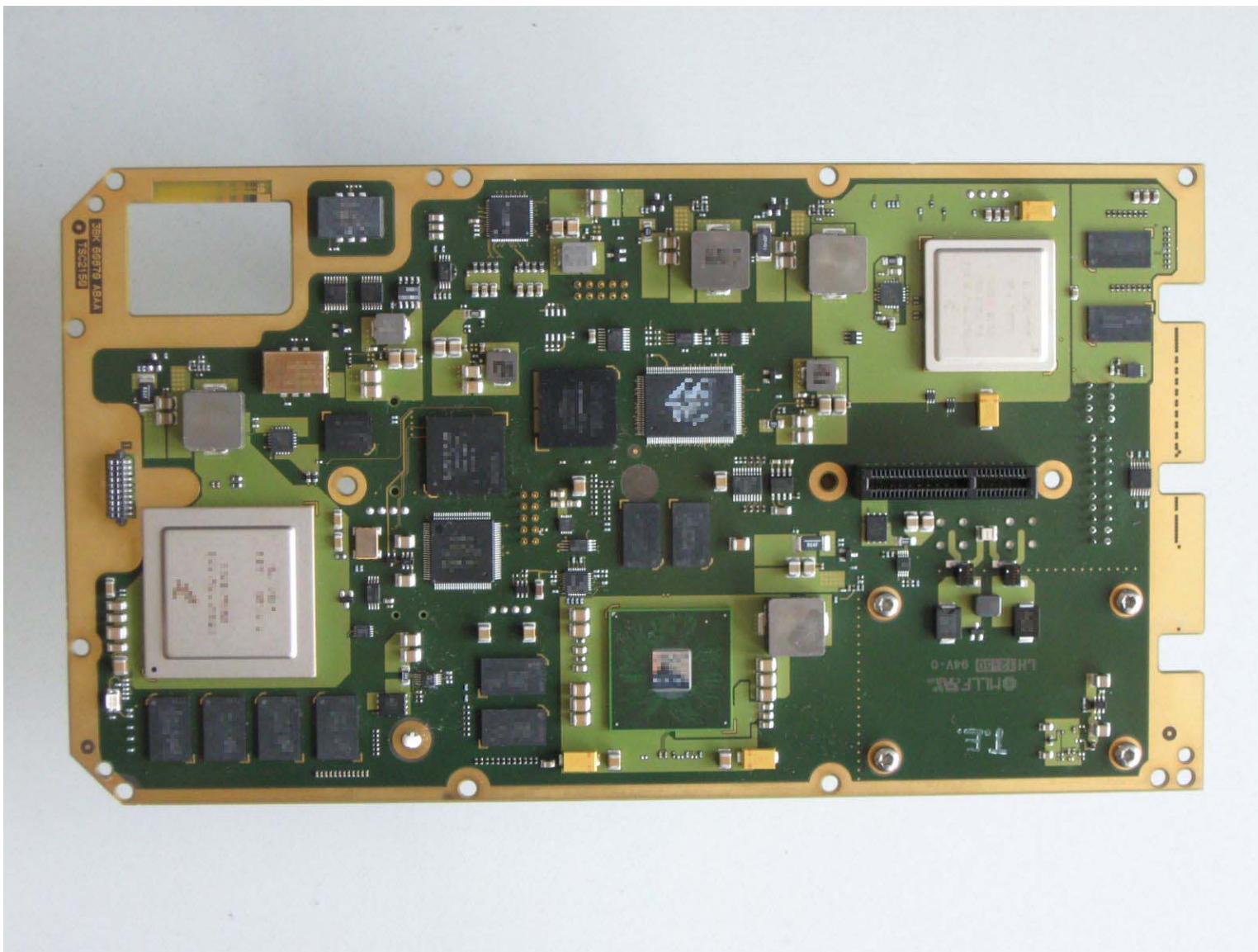
Digital Analog and Power Amplifier Top View



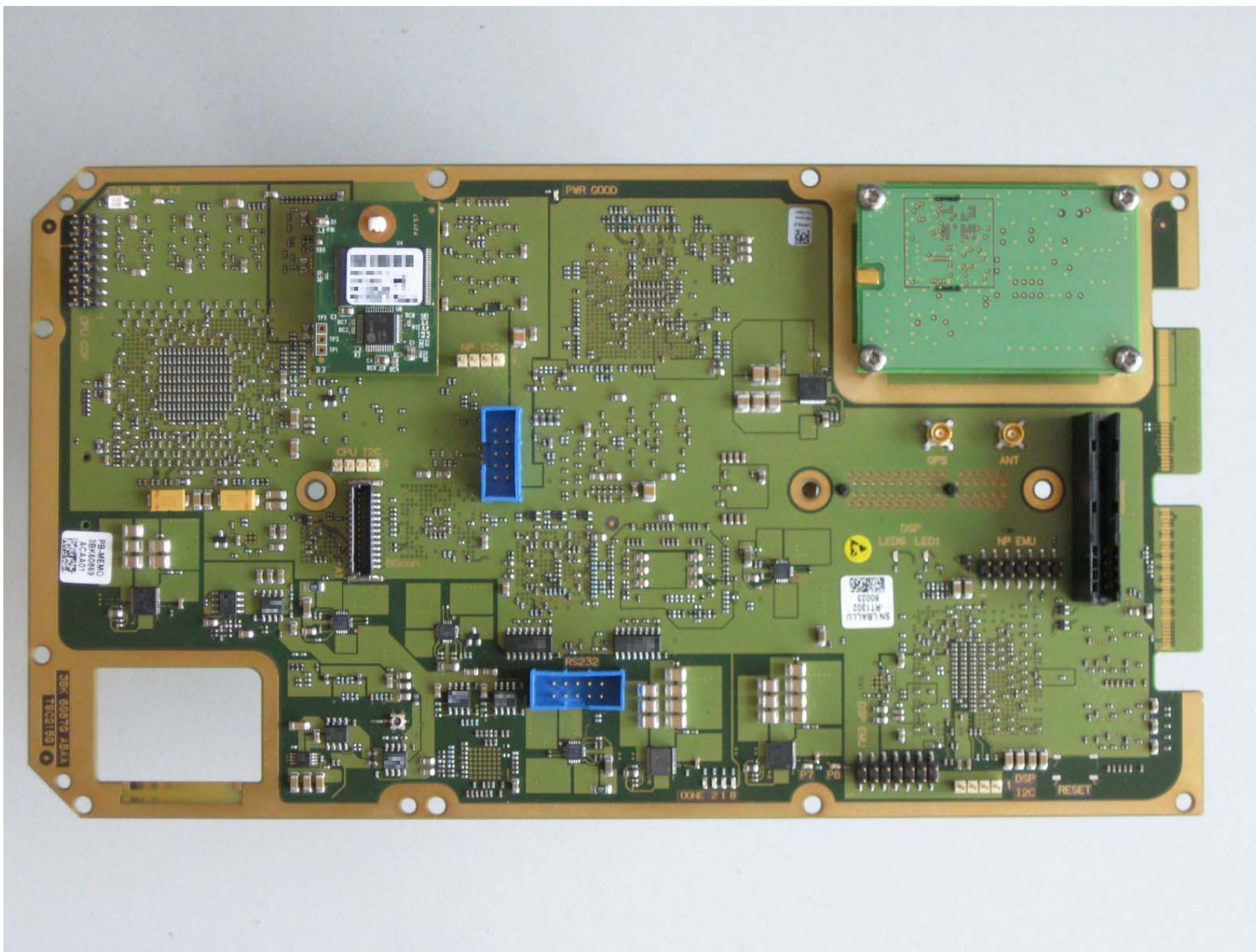
Digital Analog and Power Amplifier Board Bottom View



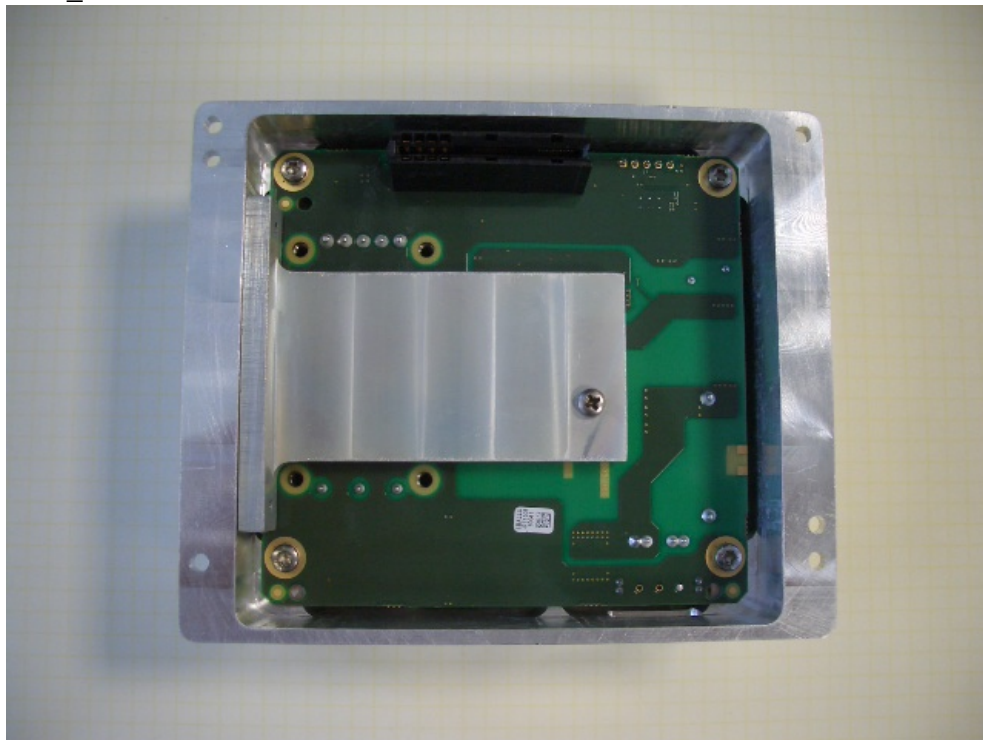
Modem Top View



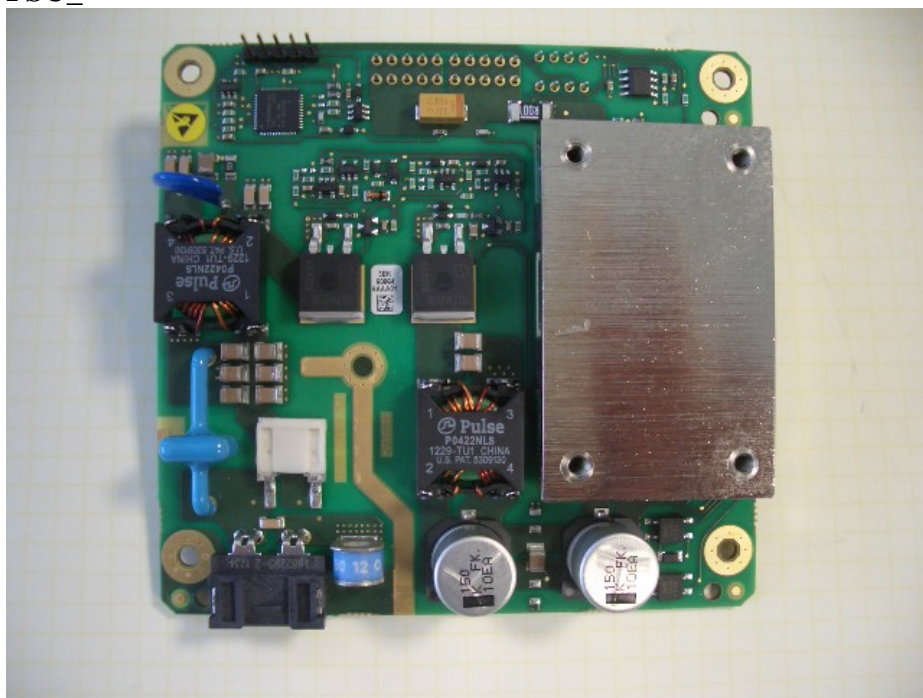
Modem Bottom View



PSU_



PSU_



PSU

