

EXHIBIT 8**Section 2.1033 (c)(12) PHOTOGRAPHS OF THE EQUIPMENT**

Photographs (8 x 10) of the equipment of sufficient clarity to reveal equipment construction and layout, including meters, if any, and labels for controls and meters and sufficient views of the internal construction to define component placement and chassis assembly. Insofar as these requirements are met by photographs or drawings contained in instruction manuals supplied with the certification request, additional photographs are necessary only to complete the required showing.

Response

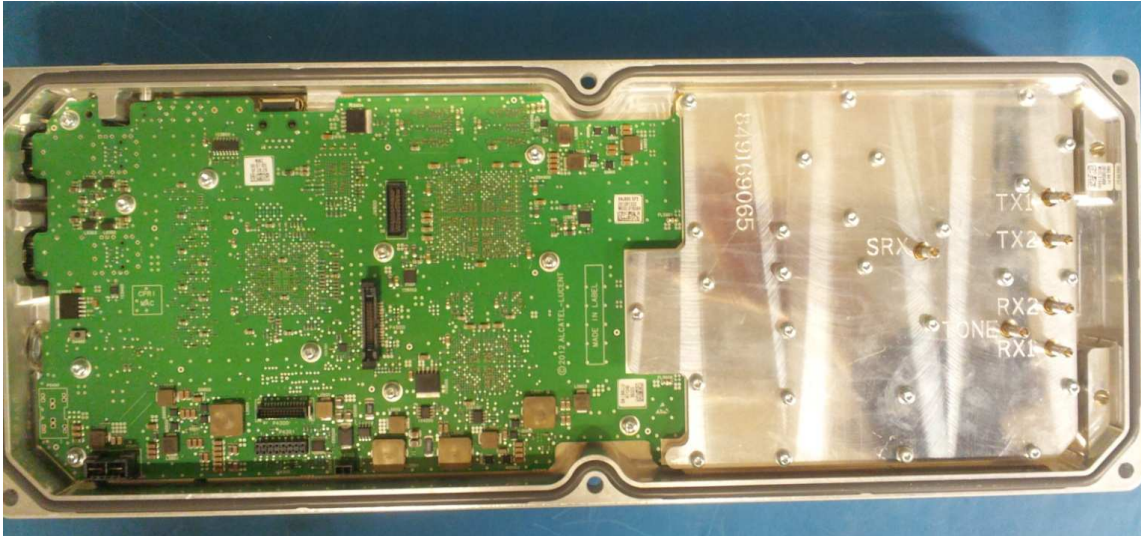
The RF path of the MRO 2x1W wireless base station is comprised of two critical RF active components: D/A board and PA board.

The following pages contain the required photographs of the AS5BBTRX-18 MRO, subject of this application, showing the internal views of the MRO critical RF components.

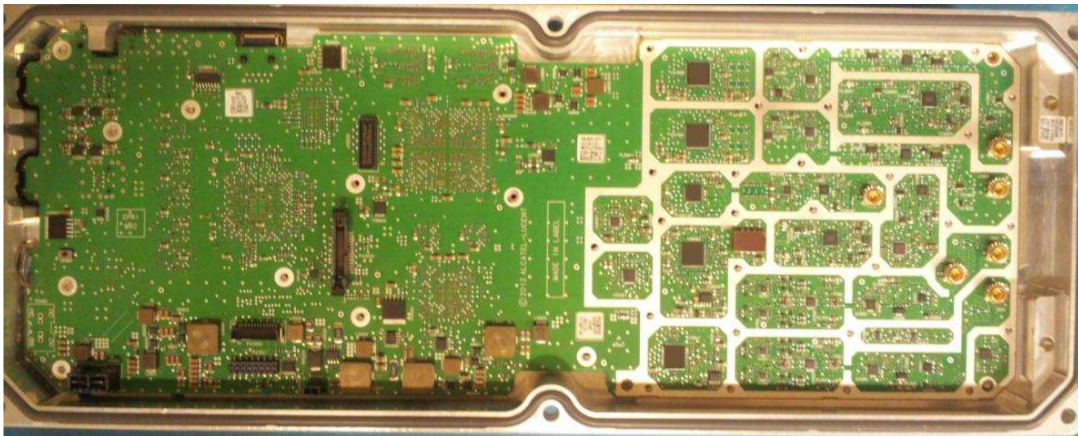
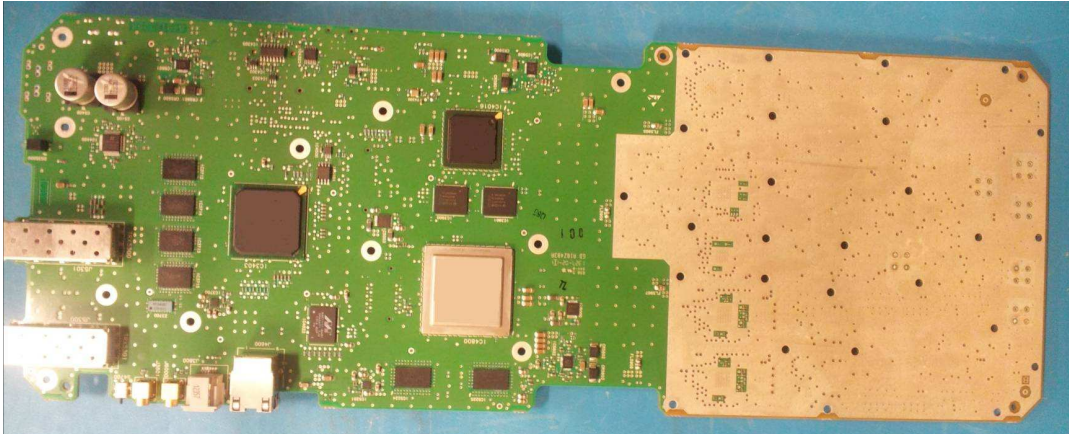
Six photos in total are submitted, which include:

- 1) Internal Views of D/A and PA Boards with Shielding
- 2) Front and Rear Views of D/A Board with Shielding Cover Removed
- 3) Front and Rear Views of PA Board with Shielding Cover Removed

Internal Views of D/A and PA Boards with Shielding



Front and Rear Views of D/A Board with Shielding Cover Removed



Front and Rear Views of PA Board with Shielding Cover Removed

