

EXHIBIT 8

Section 2.1033 (c) (12) PHOTOGRAPHS OF THE EQUIPMENT

Photographs (8 x 10) of the equipment of sufficient clarity to reveal equipment construction and layout, including meters, if any, and labels for controls and meters and sufficient views of the internal construction to define component placement and chassis assembly. Insofar as these requirements are met by photographs or drawings contained in instruction manuals supplied with the certification request, additional photographs are necessary only to complete the required showing..

Response

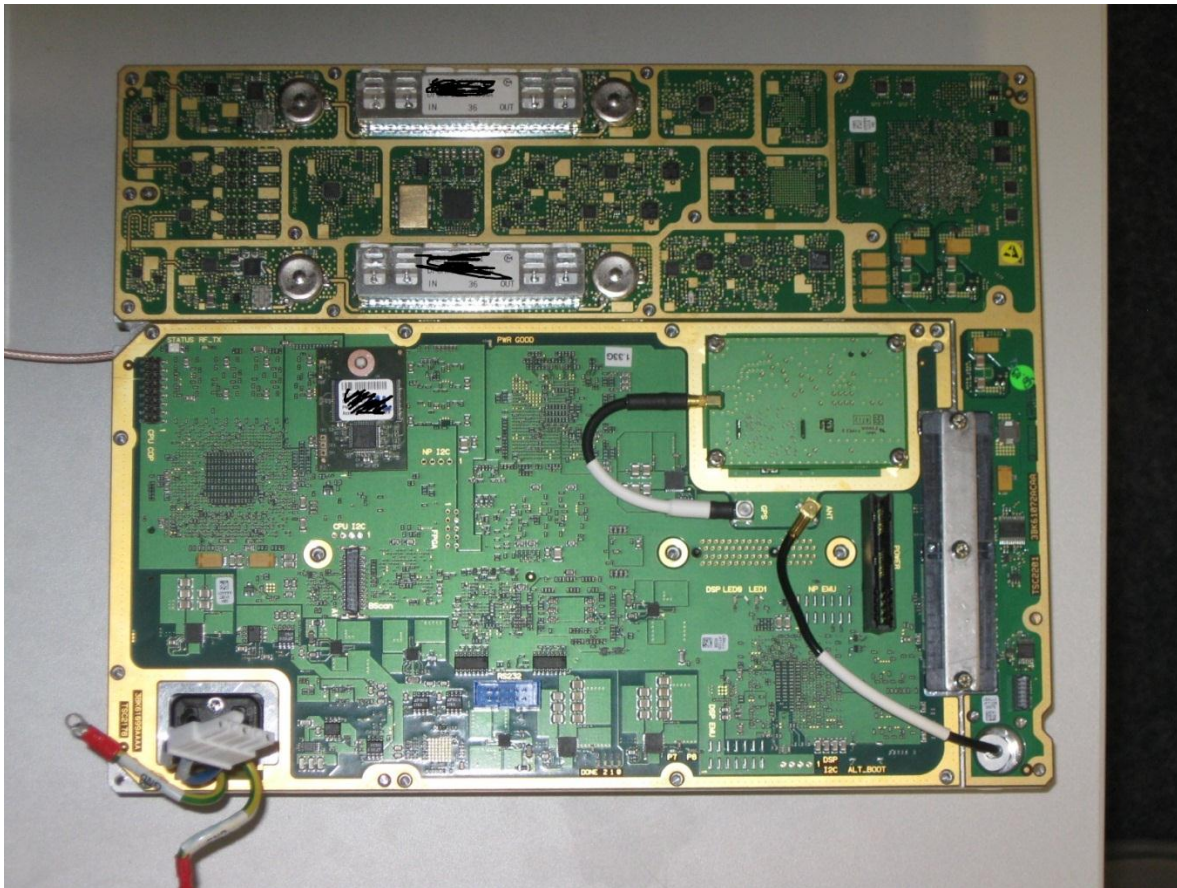
The RF path of the MCI 2x.25W wireless base station is comprised of two critical RF active components: DAPA19L board and the Modem board.

The following pages contain the required photographs of the AS5BBTRX-14 MCI, subject of this application, showing the internal views of the MCI critical RF components.

4 photos in total are submitted, which include:

- 1) Top View of MCI with Radome Removed
- 2) Top View of DAPA19L and Modem Boards with Shield Removed
- 3) Bottom View of DAPA19L Board with Shield Removed
- 4) Bottom view of Modem Board

Top View of DAPA19L and Modem Boards with Shield Removed



Bottom View of DAPA19L Board with Shield Removed



Bottom view of Modem Board

