

## **EXHIBIT 9B: INTERNAL PHOTOGRAPHS**

### **SECTION 2.1033 (c) (12)**

Photographs (8"x10") of the equipment of sufficient clarity to reveal equipment construction and layout, including meters, if any, and labels for controls and meters and sufficient views of the internal construction to define component placement and chassis assembly. Insofar as these requirements are met by photographs or drawings contained in the instruction manuals supplied with the product certification request, additional photographs are necessary only to complete the required showing.

#### **Response:**

The internal photographs of the **Alcatel-Lucent's PCS LTE 9764 Metro Cell Outdoor Transceiver System FCC ID: AS5BBTRX-12** are attached.

## Internal Photographs

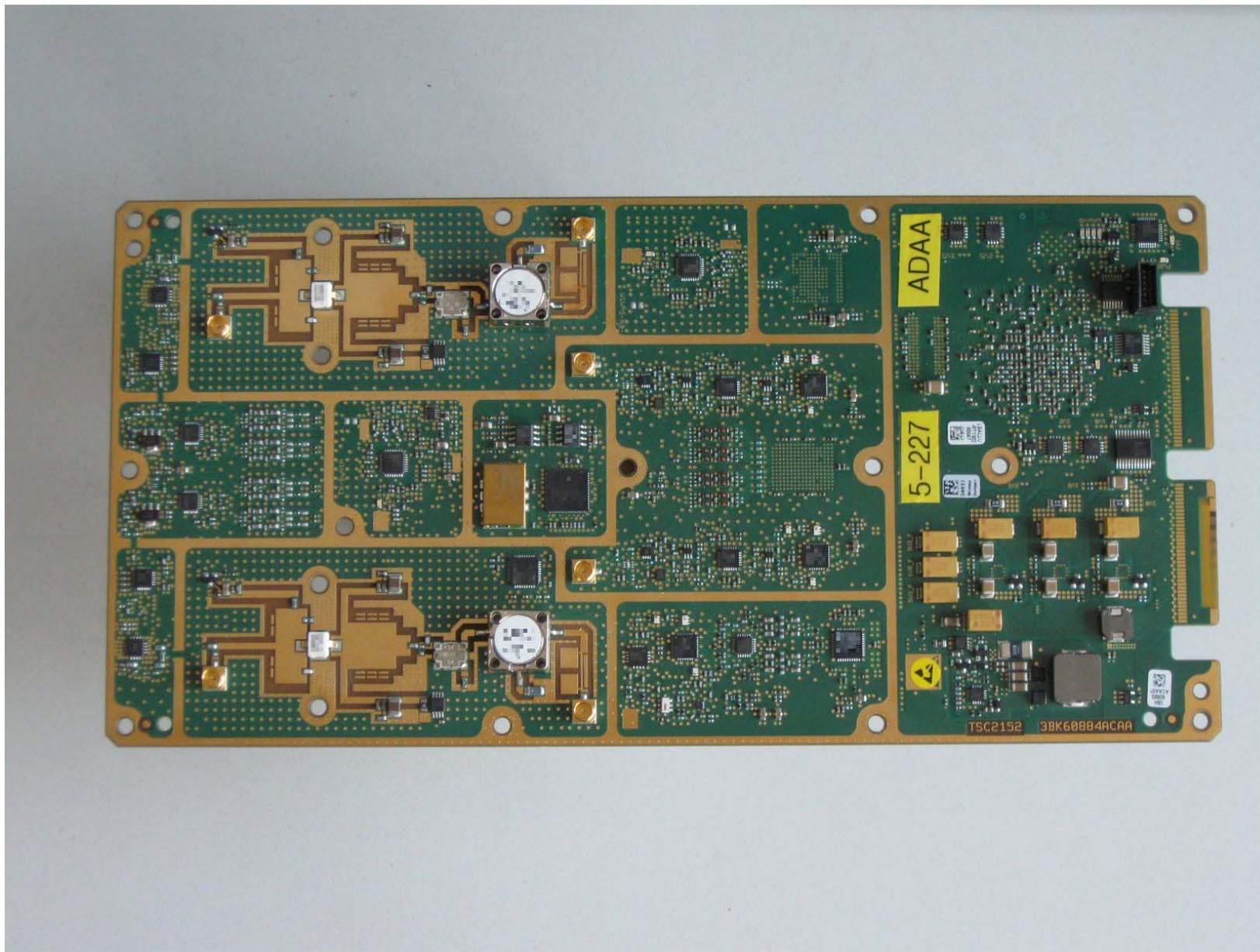
Front Internal of MCO



Front Internal of Dock

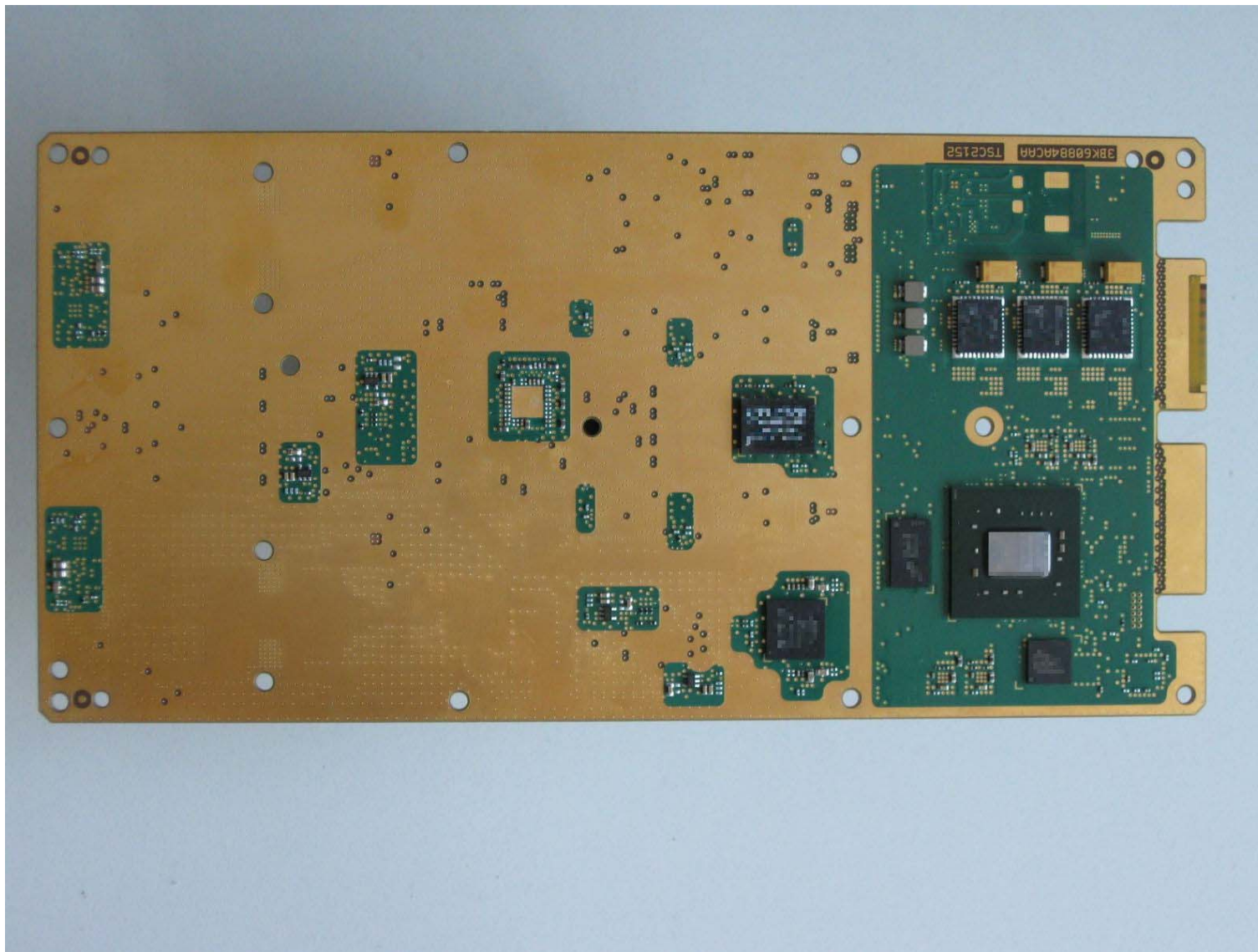


**Digital Analog and Power Amplifier Top View**

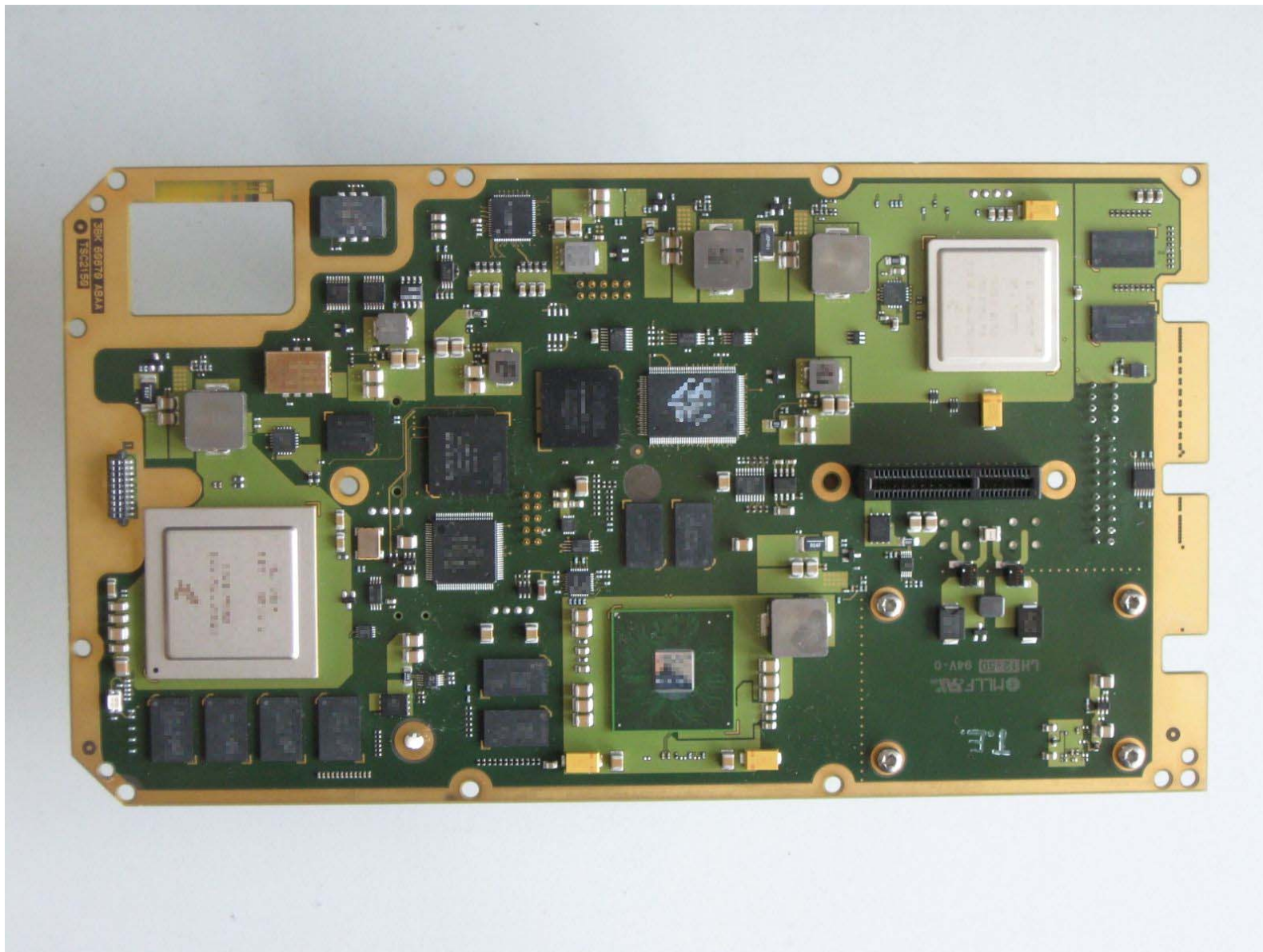




Digital Analog and Power Amplifier Board Bottom View



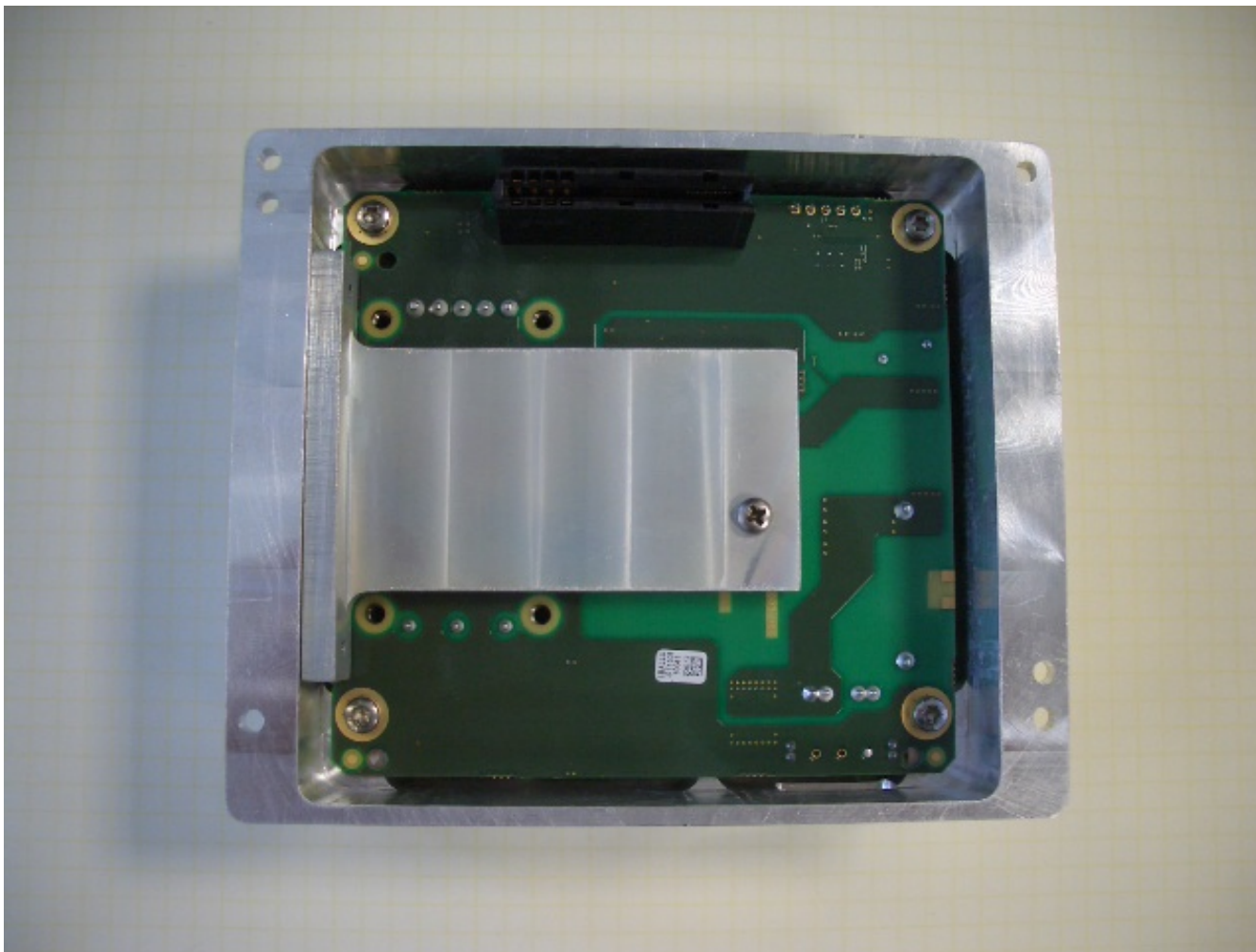
Modem Top View



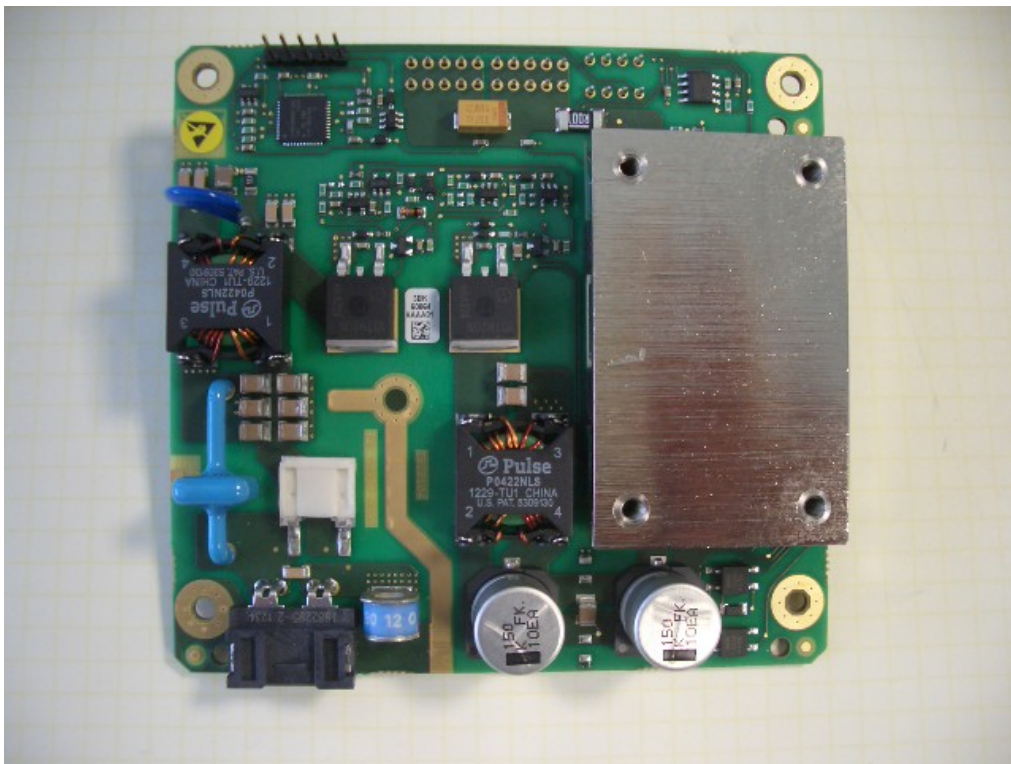


This image shows the internal circuit board of a mobile phone, likely a Palm Treo 650. The board is green with gold-colored edges and features various components including a CPU, memory chips, a battery connector, and a camera module. A small white label with a barcode is visible near the top center.

PSU\_DC-1

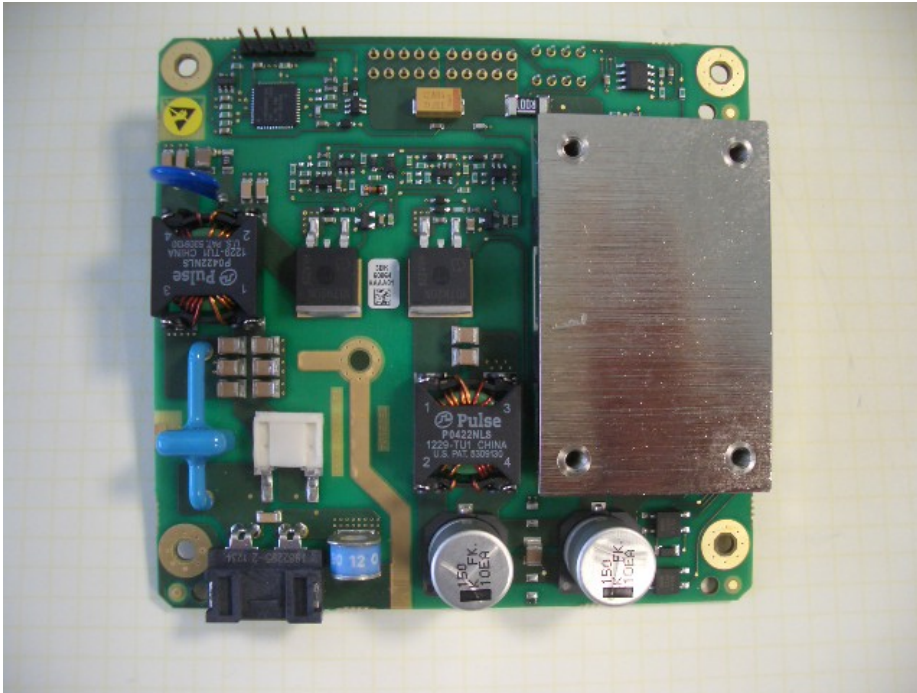


PSU\_DC-2





## PSU\_DC-2



## PSU\_DC-3

