

EXHIBIT 8**Section 2.1033 (b)(7) PHOTOGRAPHS OF THE EQUIPMENT**

Photographs (8 x 10) of the equipment of sufficient clarity to reveal the construction, the antenna used with device (if any), the controls available to the user, the component placement on the chassis, and the chassis assembly. Smaller photographs may be submitted provided they are sharp and clear, show the necessary detail, and are mounted on 8.5×11 inch paper.

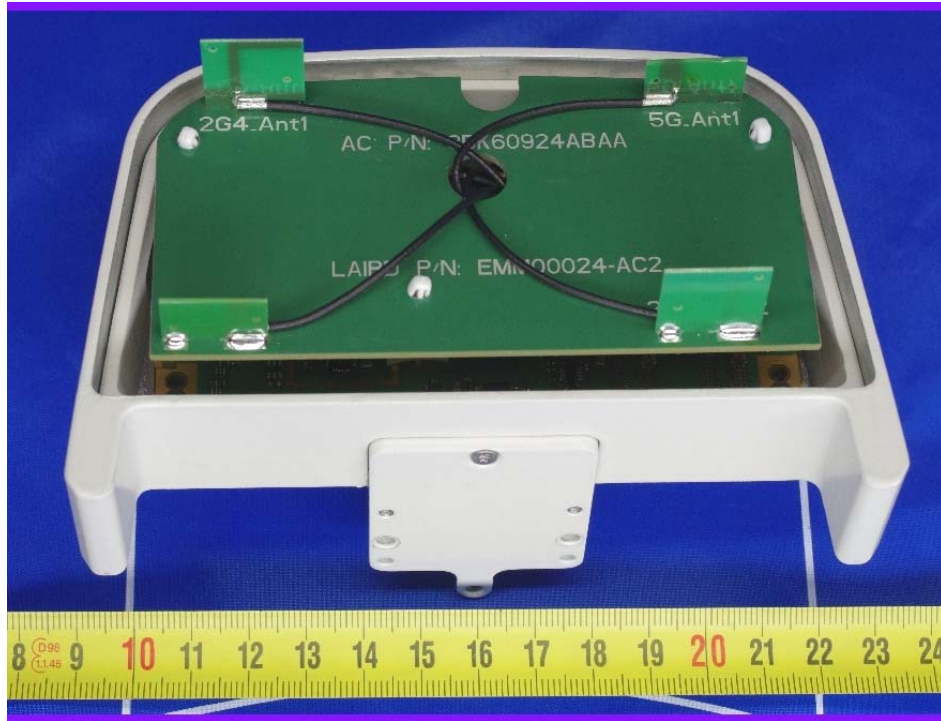
Response

The following pages contain the required photographs of the AS5BBTRX-10A MCO Wi-Fi AP, subject of this application, showing its internal views.

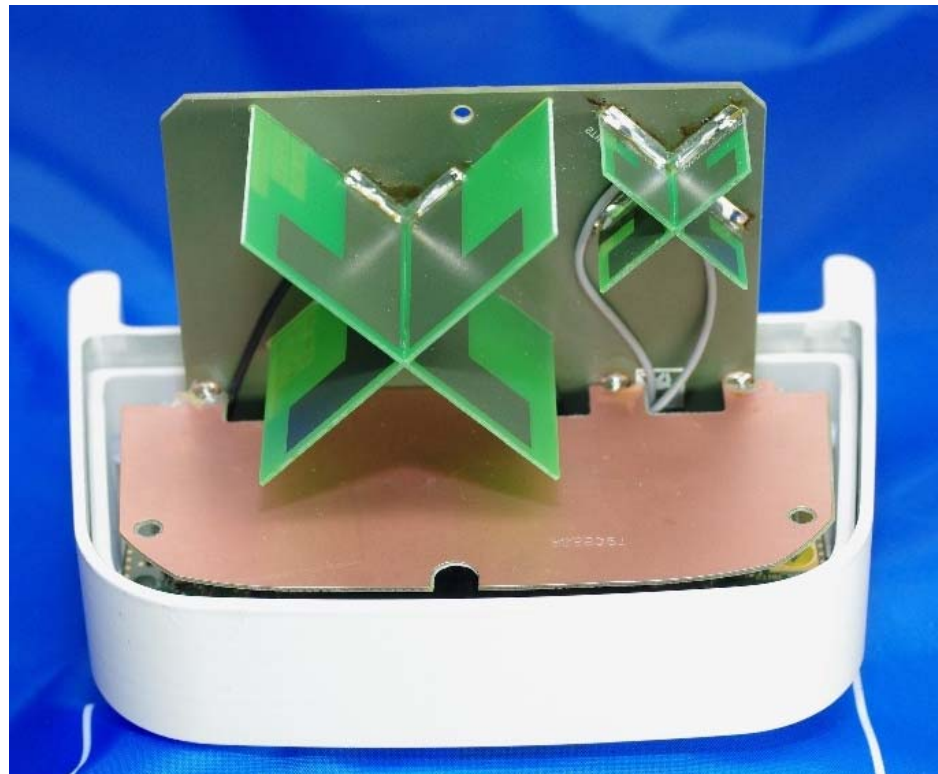
Four internal photos in total without radom are submitted, which include:

- 1) Internal View of MCO Wi-Fi AP with Lower Gain Antenna
- 2) Internal View of MCO Wi-Fi AP with Higher Gain Antenna
- 3) Internal View of MCO Wi-Fi AP Module with Antennas Removed
- 4) Back Side View of Higher Gain Antenna

Internal View of MCO Wi-Fi AP with Lower Gain Antenna



Internal View of MCO Wi-Fi AP with Higher Gain Antenna



Internal View of MCO Wi-Fi AP Module with Antennas Removed



Back Side View of Higher Gain Antenna

