

EXHIBIT 8**Section 2.1033 (b)(7) PHOTOGRAPHS OF THE EQUIPMENT**

Photographs (8 x 10) of the equipment of sufficient clarity to reveal exterior overall appearance, the construction, the antenna used with device (if any), the controls available to the user, the component placement on the chassis, and the chassis assembly. Smaller photographs may be submitted provided they are sharp and clear, show the necessary detail, and are mounted on 8.5×11 inch paper.

Response

The following pages contain the required external photographs of the AS5BBTRX-10A MCO Wi-Fi AP, subject of this application.

Seven photos in total were submitted, which include:

- 1) External Front Top View of MCO Wi-Fi AP with Higher Gain Antenna
- 2) External Back Bottom View of MCO Wi-Fi AP with Higher Gain Antenna
- 3) External Left Bottom Views of MCO Wi-Fi AP with Higher Gain Antenna
- 4) External Front Top View of MCO Wi-Fi AP with Lower Gain Antenna
- 5) External Front Bottom View of MCO Wi-Fi AP with Lower Gain Antenna
- 6) External Back Bottom View of MCO Wi-Fi AP with Lower Gain Antenna
- 7) External Left Bottom View of MCO Wi-Fi AP with Lower Gain Antenna

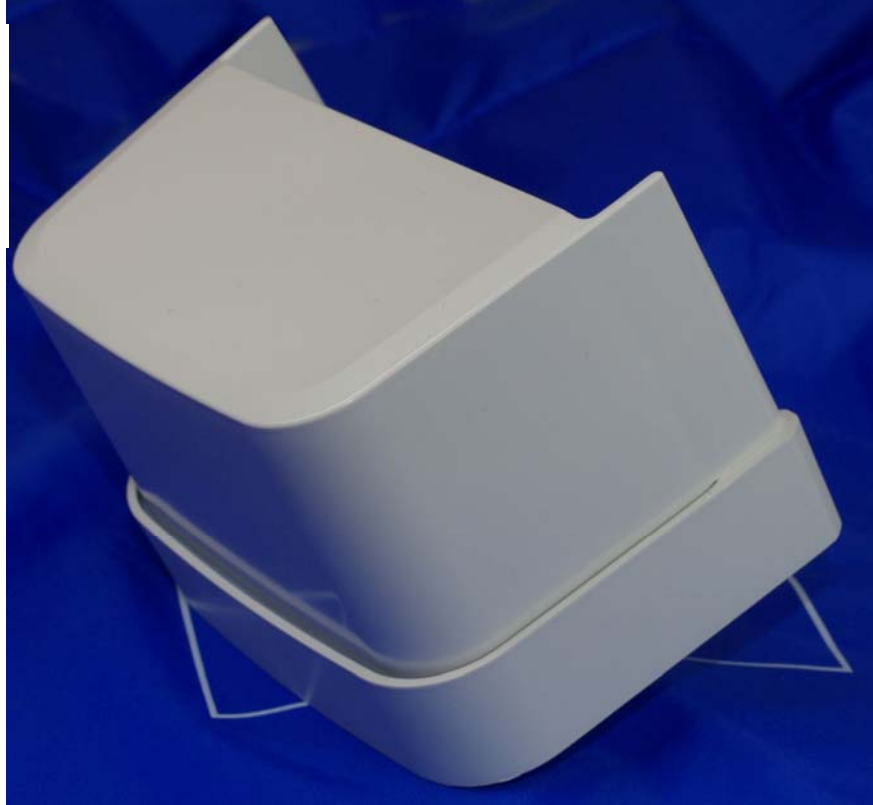
External Front Top View of MCO Wi-Fi AP with Higher Gain Antenna



External Back Bottom View of MCO Wi-Fi AP with Higher Gain Antenna



External Left
Bottom Views of
MCO Wi-Fi AP
with Higher Gain
Antenna



External Front Top
View of MCO Wi-Fi
AP with Lower Gain
Antenna



External Front
Bottom View of
MCO Wi-Fi AP
with Lower Gain



External Back
Bottom View of
MCO Wi-Fi AP
with Lower Gain



